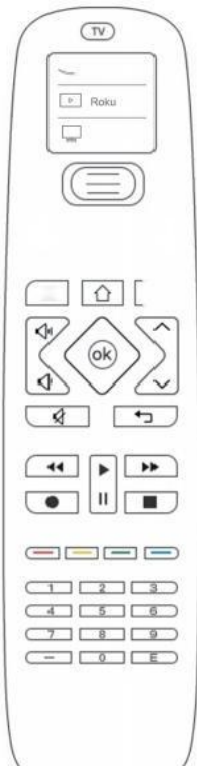


# SofaBaton U2 User Manual



Product Name: Bluetooth Remote Control

Model: U2

FCC ID: 2AT2U-U1

FCC NOTICE

Package Contents:

SofaBaton U2 (main device)

2 AA batteries

User Manual

This device complies with Part 15 of the FCC Rules. Operation is subject to the following two conditions: (1) this device may not cause harmful interference, and (2) this device must accept any interference received, including interference that may cause undesired operation.

Any changes or modifications not expressly approved by the party responsible for compliance could void the user's authority to operate the equipment.

## NOTE

This equipment has been tested and found to comply with the limits for a Class B digital device, pursuant to Part 15 of the FCC Rules. These limits are designed to provide reasonable protection against harmful interference.

Interference in a residential installation. This device generates, uses, and can radiate radio frequency energy and, if not installed and used in accordance with the instructions, may cause harmful interference to radio communications. However, there is no guarantee that interference will not occur in a particular installation.

If this device causes harmful interference to radio or television reception, which can be determined by turning the device off and on, the user is encouraged to try to correct the interference by one or more of the following measures:

- Reorient or relocate the receiving antenna.
- Increase the separation between the device and the receiver.
- Connect the device to an outlet on a circuit different from that to which the receiver is connected.
- Consult the dealer or an experienced radio/TV technician for assistance.
- Please consider these measures to minimize any interference and improve radio and television signal reception. If you have further questions or need assistance, please do not hesitate to contact the dealer or an experienced radio/TV technician.

Please connect the device to an outlet on a circuit different from that to which the receiver is connected. Consult the dealer or an experienced radio/TV technician for assistance.

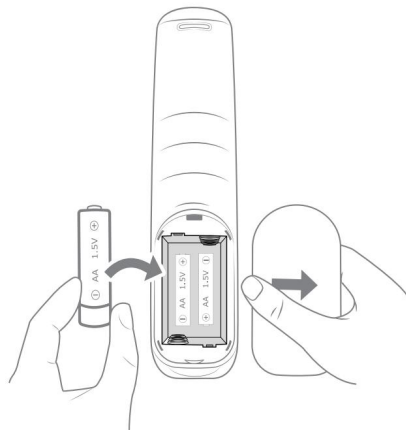
To maintain compliance with FCC RF exposure guidelines, this device should be installed and operated with a minimum distance of 20 cm between the radiator and your body. Use only the supplied antenna.

#### FCC Radio Frequency Exposure Statement:

This device complies with FCC radiation exposure limits set forth for an uncontrolled environment. This device should be installed and operated with a minimum distance of 20 cm between the radiator and your body.

## Quick Guide:

### 1. Battery Installation.

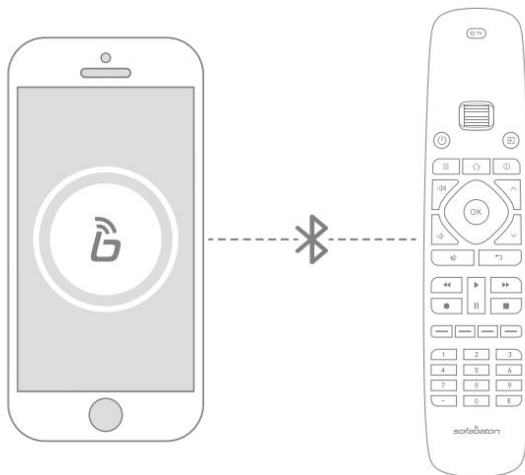


### 2. Download the "SofaBaton" app.

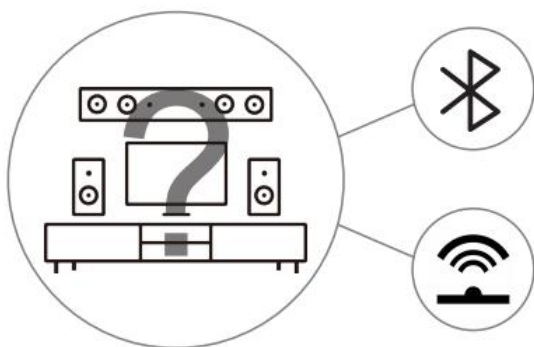


*Search "SofaBaton" on App Store or Google Play*

### 3. Connect the remote.



### 4. Add a device.



Determine if your devices support IR or Bluetooth.

Devices that do not support Wi-Fi.

Some devices are compatible with both IR and Bluetooth.

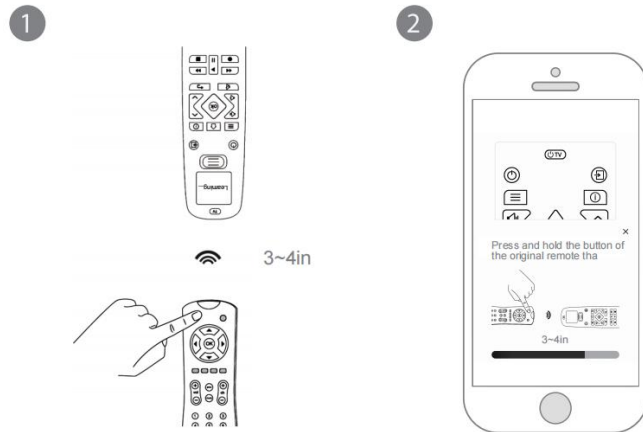
IR:

If you have the original remote, we suggest you jump to step 5; otherwise, go to step 6.

Bluetooth:

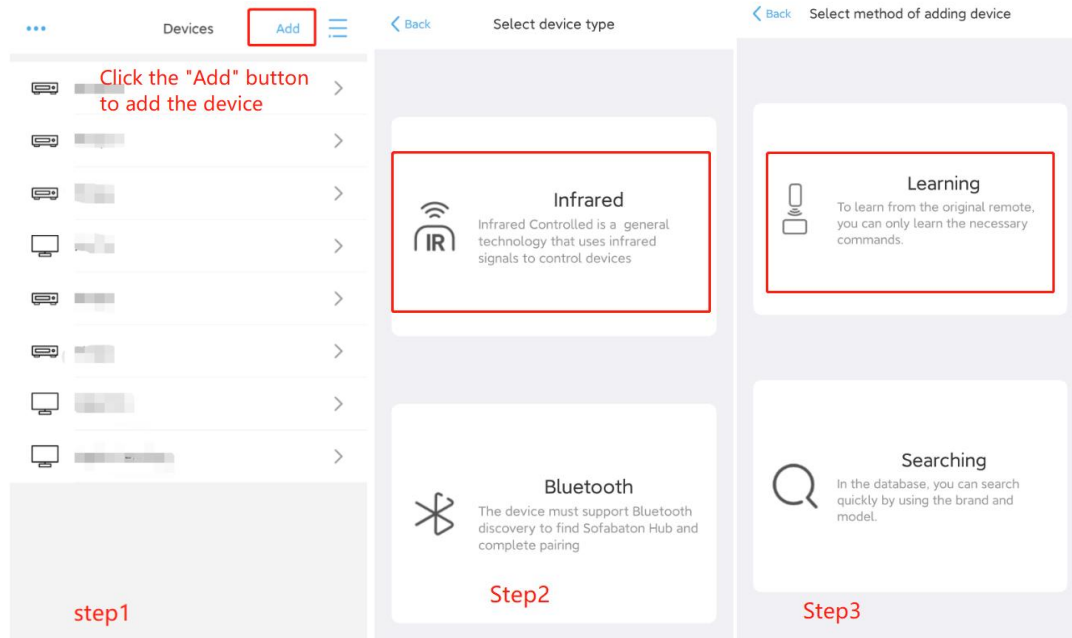
Bluetooth device users can proceed directly to step 7.

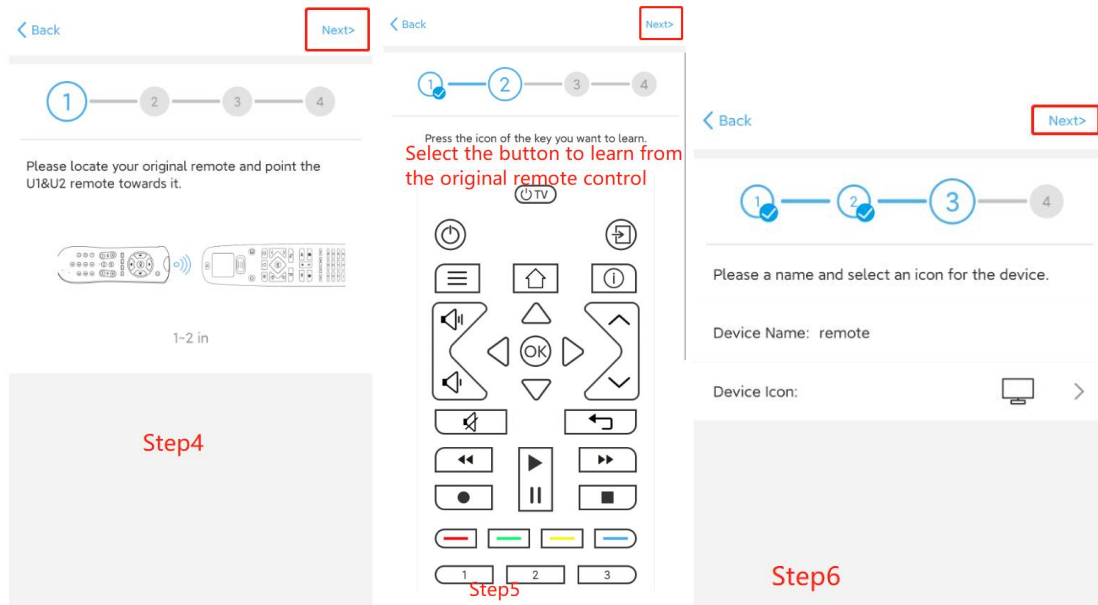
## 5. IR Learning Mode



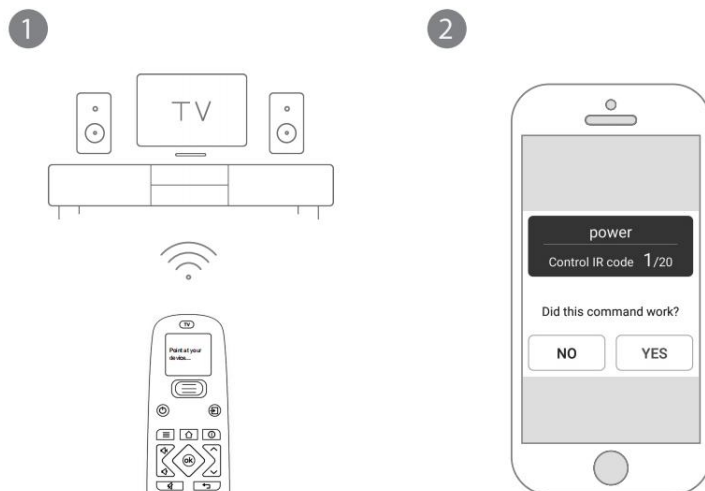
Keep your U2 in line of sight with the original remote. Select the icon of the function key you want to copy. Meanwhile, long-press the corresponding function key on the original remote.

If the app notifies you that the operation is successful, it means it's completed. If not, please try again.

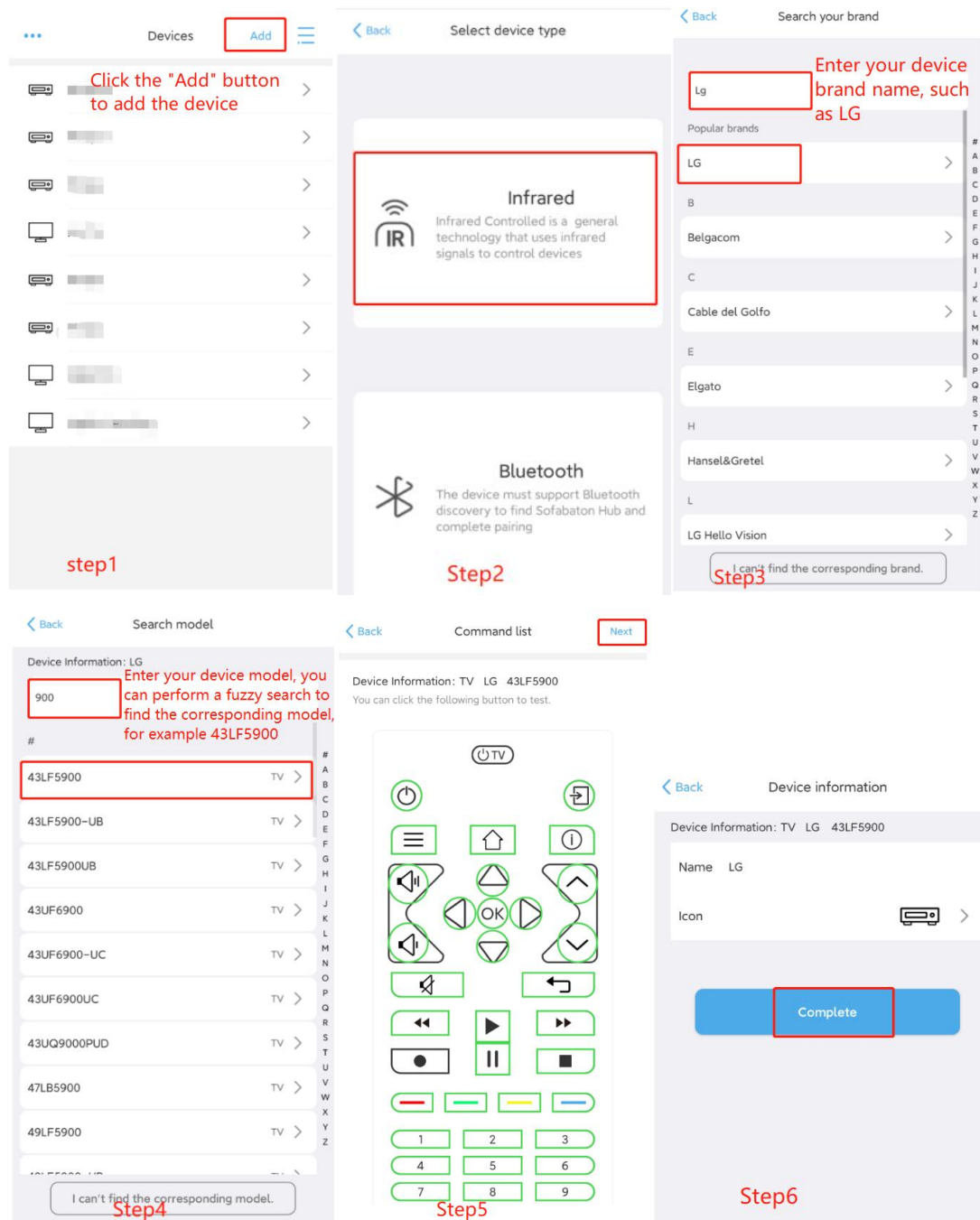




## 6. IR Matching Mode

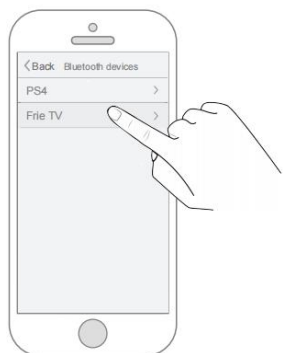


Keep your U2 in line of sight with the device. Press the first button and then choose (Yes) or (No) to see if it works. During the process, the U2 remote control will emit infrared signals to the device. U2 will be able to find the correct code set after searching the database.

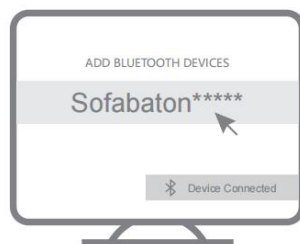


## 7. Bluetooth Mode

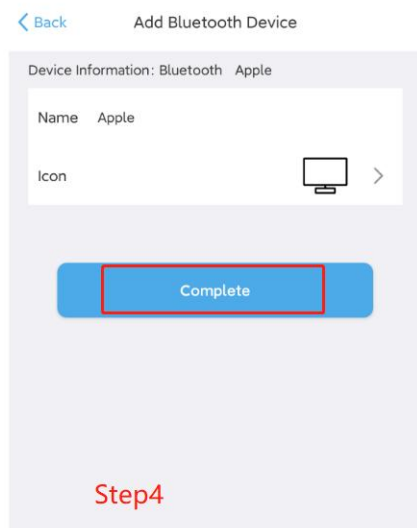
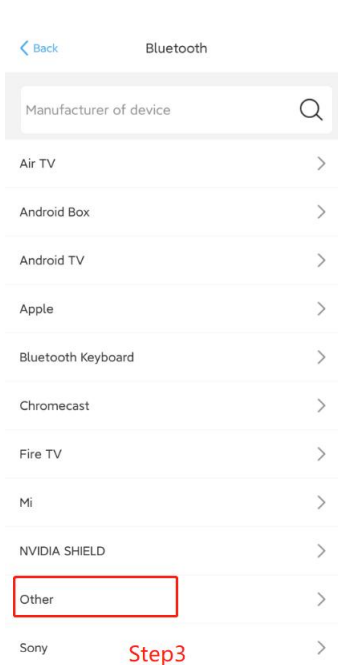
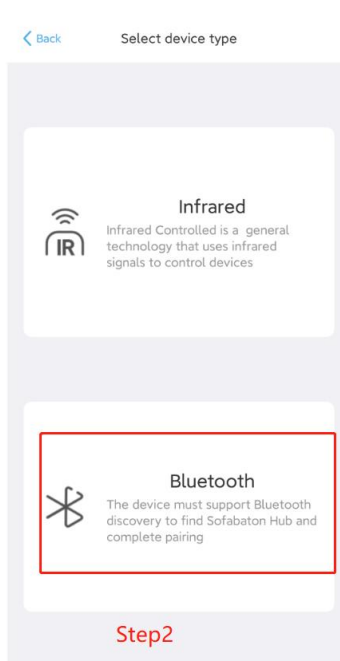
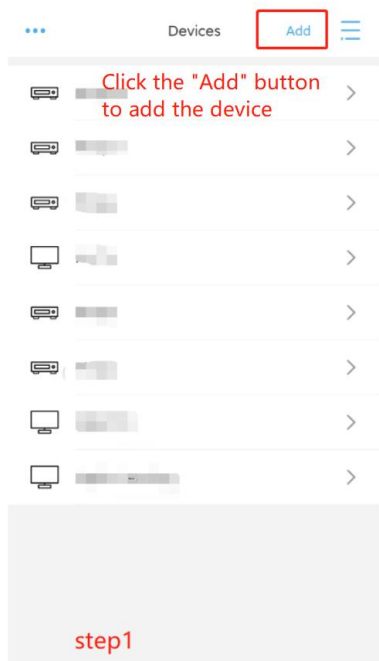
1



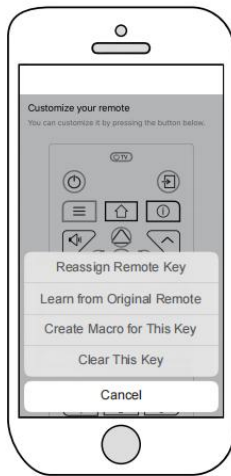
2



If you're adding a new Bluetooth device, the app will disconnect from your U2 first. Meanwhile, you can connect your U2 to the phone to complete the remaining steps for adding a new device.

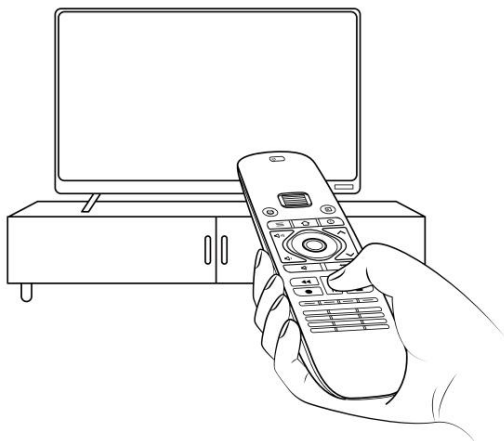


## 8. After adding new devices



Reassign remote keys.  
Configure macro keys.

## 9. Start using



Scroll to the desired device and start using it.

Visit [sofabaton.com](https://sofabaton.com) for more information.