

FX6 Motorcycle Headset User Manual



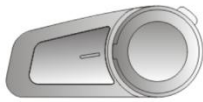
Email: liveconn@qq.com

TEL: +8618922871406

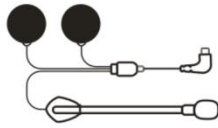
CATALOGUE

1. Packing List.....	2
2. Function Introduction.....	3
3. Installation Step.....	4
3.1 Fixed by clamp.....	4
3.2 Fixed by VELCRO sticker.....	5
4. Disassembly of the Device.....	5
5. Product Introduction.....	6
6. Button Operation Introduction.....	7
6.1 On/Off Button.....	7
6.2 Multi-function Button.....	8
6.3 Knob.....	9
7. Bluetooth Status Indication and Prompt.....	9
8. Pairing Methods.....	10
8.1 Two ways for FX6 to enter pairing status.....	10
8.2 Pairing with the Non-Fodsports FX6 Bluetooth device	10
8.3 Pairing with Mobile, GPS and MP3.....	11
8.4 Pairing between two FX6.....	11
8.5 Group Intercom Settings.....	12
8.6 Simultaneous connection of multiple devices.....	13
9. Priority of Functions.....	14
10. Specifications.....	14
11. Matters Need Attention.....	14
12. After-Sale Service.....	15

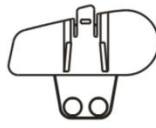
1. Packing List



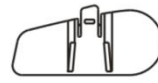
Bluetooth Device



Microphone & Ear Speakers



Clamp



Velcro Clamp



Manual



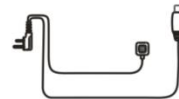
Headphone Velcro



USB Cable



Screw Driver

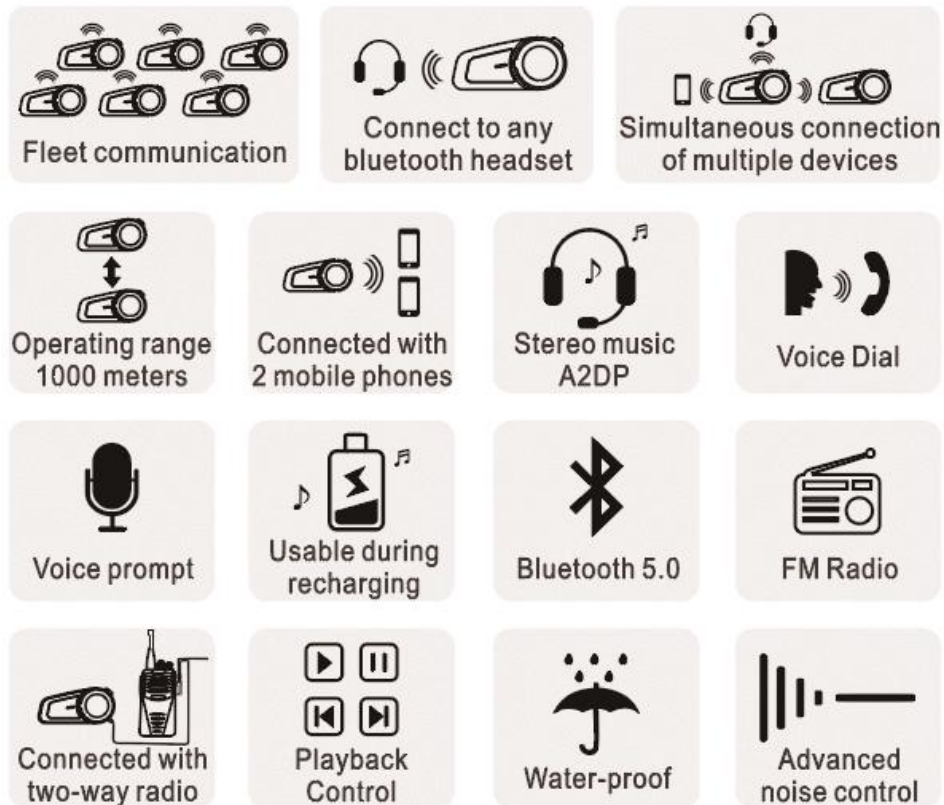


Two-way Radio Control Cable (Optional)



1. Bluetooth Device
2. Microphone & Ear Speakers
3. Clamp
4. Velcro Clamp
5. Manual
6. Headphone Velcro
7. USB Cable
8. Screw Driver
9. Two-way Radio Control Cable (Optional)

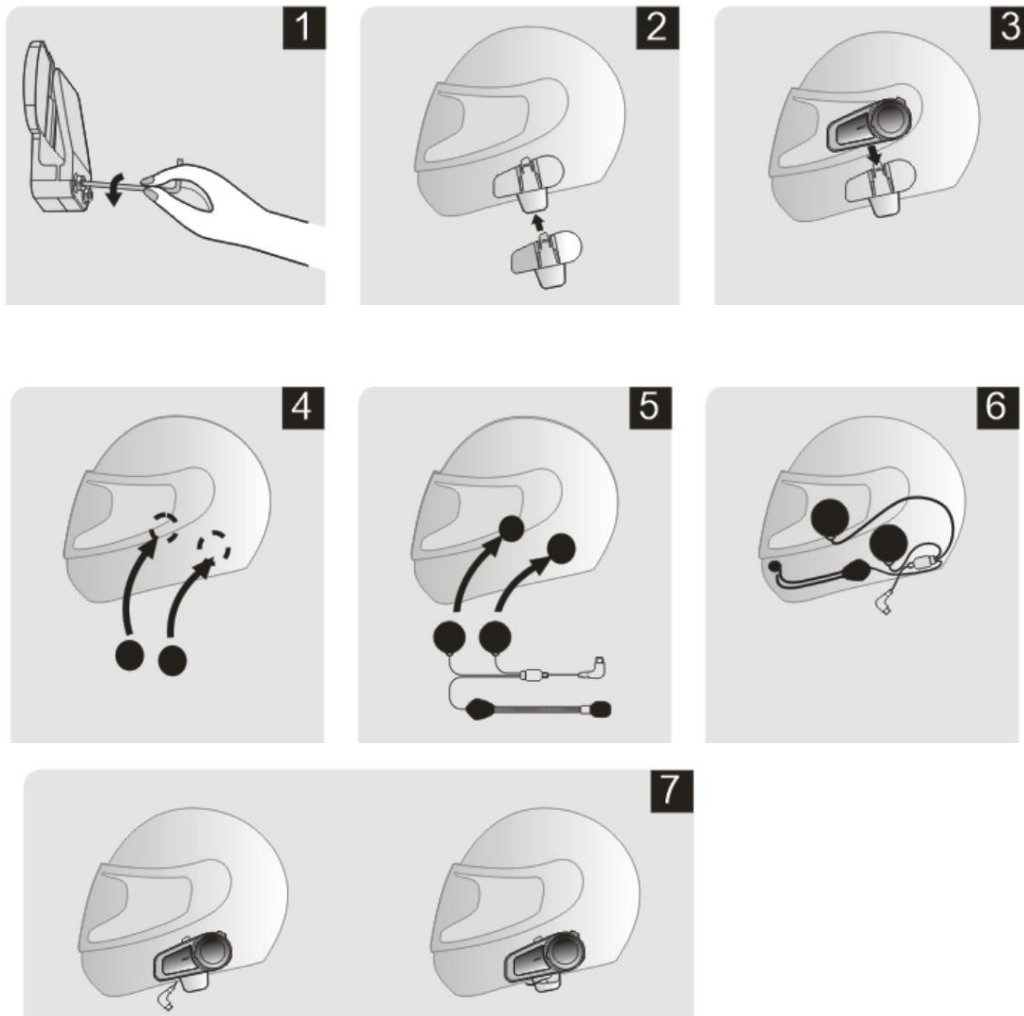
2. Function Introduction



1. Fleet communication
2. Connect to any Bluetooth headset
3. Simultaneous connection of multiple devices
4. Operating range 1000 meters
5. Connected with 2 mobile phones
6. Stereo music A2DP
7. Voice dial
8. Voice prompt
9. Usable during recharging
10. Bluetooth 5.0
11. FM radio
12. Connected with two-way radio
13. Playback control
14. Water-proof
15. Advanced noise control

3. Installation Step

3.1 Fixed by clamp



1. Loosen the screws on the back of clamp with the provided screw driver.
2. Open the lining of helmet, insert the clamp in the proper position on the left of helmet and fasten the screw.
3. Slide the back track of the device into the clamping track.
4. Open the inner lining on the ear position of the helmet and attach the VELCRO loop.
5. Attach the Headphone Velcro hook to the loop (the short-line speaker is on the left).
6. Place butterfly sticker in the right position on the left side of the helmet,

match the microphone with the mouth position, and tidy up the cable and lining.

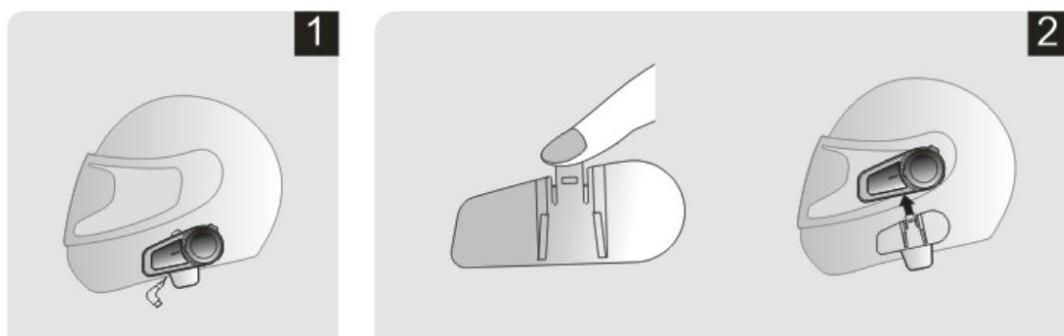
7. Insert the plug into the headset socket and the installation is finished.

3.2 Fixed by VELCRO sticker



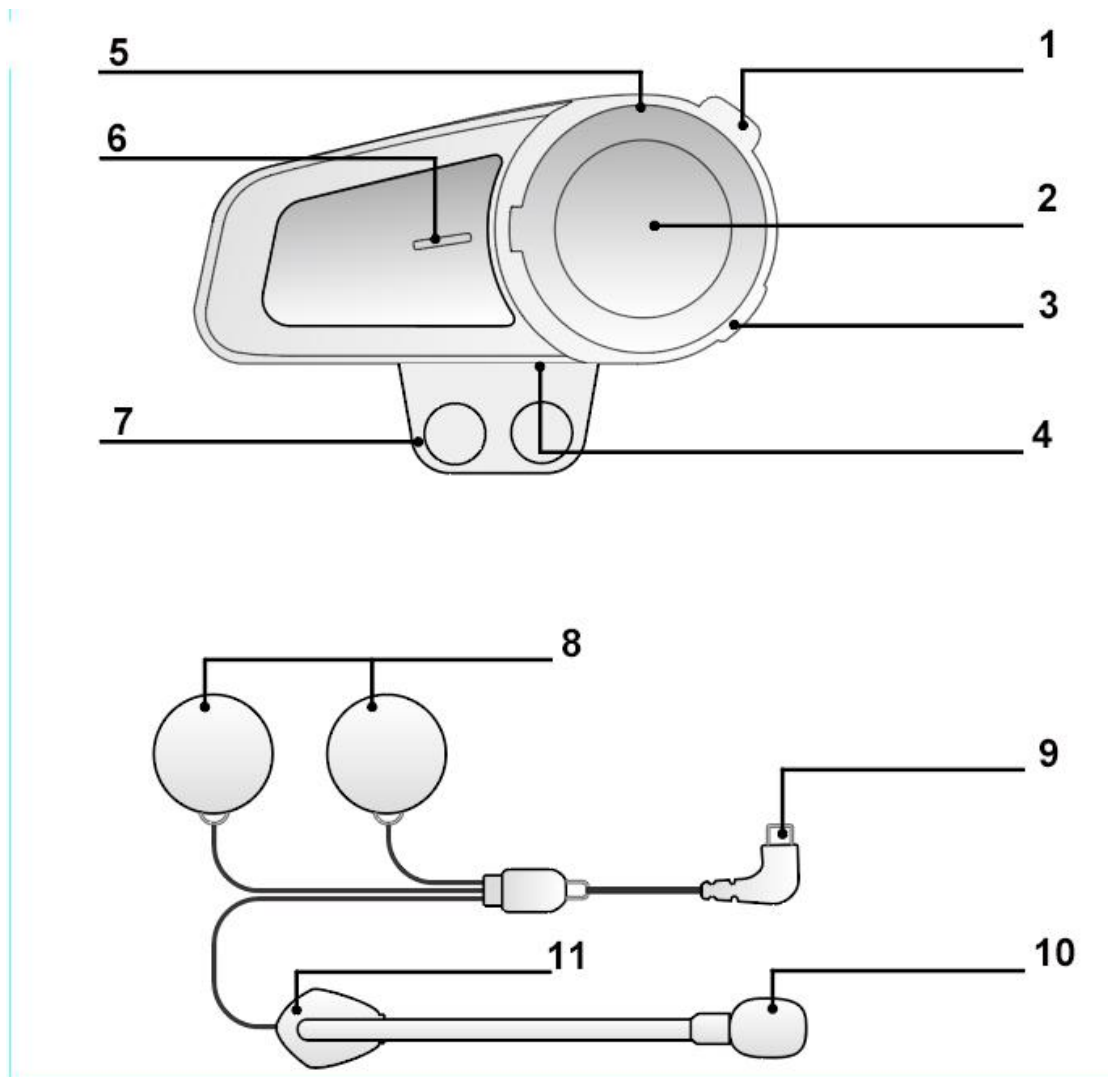
1. Slide the back track of the device into the clamping track.
2. Tear off the white paper on the back of the clamp and stick it in the right position on the left side of the helmet.
3. Ear speakers & Microphone installation step refer to 3.1

4. Disassembly of the Device



1. Pull out the headset plug.
2. Press the upper clamp buckle and move the device upward to remove it.

5. Product Introduction

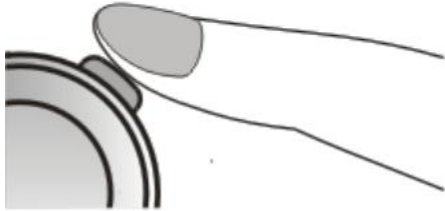


1. On/Off Button
2. Multi-function Button
3. Charger Socket
4. Headset Socket
5. Knob
6. Indicator Light
7. Clamp
8. Ear Speakers
9. Headset Plug

- 10. Microphone
- 11. Butterfly Sticker

6. Button Operation Introduction

6.1 On/Off Button



Turn on (When the headset is off, press and hold it for 3 seconds. There is a “Welcome to FODSPORTS Bluetooth Communication System” sound prompt, the blue light will be on for 1 second.)

Turn off (When the headset is on, press and hold it for 5 seconds. There is a “Power Off” sound prompt, the red light will be on for 1 second.)

Pairing (When the headset is off, press and hold it for 6 seconds. There is a “Pairing” sound prompt, blue and red lights flash alternately.)

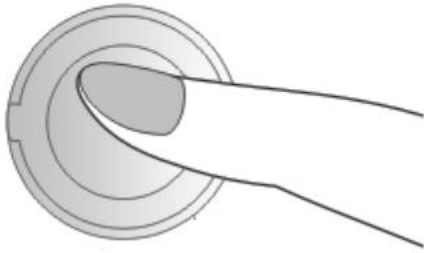
Clear the pairing device (When the headset is on, keep pressing the button for another 3 seconds after turn it off. After “power off” sound prompt, the red light quickly flashes 3 times and a “toot” sound prompt can be heard.)

Start the Bluetooth Intercom (When paired, press once on the button, you will hear “Intercom Connected” sound prompt When the connection is successful, then press again to disconnect the intercom, press again to reconnect.)

Note: If B pair with A & C successively, B need to press the button once to initiate intercom with C, and press twice to intercom with A.

End the Bluetooth Intercom (Shortly press the button and intercom end after a “Intercom disconnected” sound prompt.)

6.2 Multi-function Button



Pairing (When the headset is on, press and hold it for 6 seconds. There is a “Pairing” sound prompt, blue and red lights flash alternately.)

Answering a call (When there is coming call, click it once to pick up or take no action, the headset will pick it up automatically, you will hear “Dong Dong” sound prompt.)

Rejection of call (If there is a call, press and hold it 2 seconds to reject, you will hear “Dong Dong” sound prompt.)

Disconnect headset temporarily & answer by phone (Press and hold it 2 seconds during call, there is a “Dong” sound prompt, red light flash every 1 second.)

End a call (Click it once on call will end it, there is a “Dong” sound prompt.)

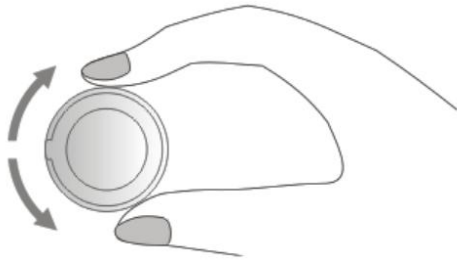
Voice dialing (When the headset is not occupied, click it twice, there is a “Voice Dial” sound prompt.) **NOTE: Please make sure that your phone supports voice command and the functions are turned on.**

Music Play/Pause (When connected, click it once.)

Switch between Bluetooth and FM (When the headset is on, triple-click it and there is “Bluetooth mode” or “FM mode” sound prompt.)

*** Turn on/off FM:** When device is on, short press Multi-function Button 3 times to turn on / off FM function.

6.3 Knob



Turn up the volume (On a call, intercom, playing music or FM, turn the knob clockwise and hold it to increase volume until it reaches the level you want. A “toot” prompt will be heard when it reaches Max volume.)

Turn down the volume (On a call, intercom, playing music or FM, turn the knob counterclockwise and hold it to decrease volume until it reaches the level you want. A “toot” prompt will be heard when it reaches Min volume.)

Next Music/ FM Channel (When playing music or FM, turn the knob clockwise.)

Previous Music/ FM Channel (When playing music or FM, turn the knob counterclockwise.)

7. Bluetooth Status Indication and Prompt

Power on status (If Bluetooth is connected, there is a “Bluetooth connected” sound prompt, blue light flashes once every 6 seconds; if Bluetooth is not connected, there is a “Bluetooth disconnected” sound prompt, blue light flashes twice every 6 seconds.)

Low battery alarm (The “Battery Low” sound is prompted every 60 seconds when turn on, red light will keep flashing.)

Charging status(Red light is on when charging and off when fully charged.)

Battery status sound prompt when powered on (If the battery is full, the “Battery Full” sound is prompted. If the battery is low, the “Battery Low” sound is prompted.)

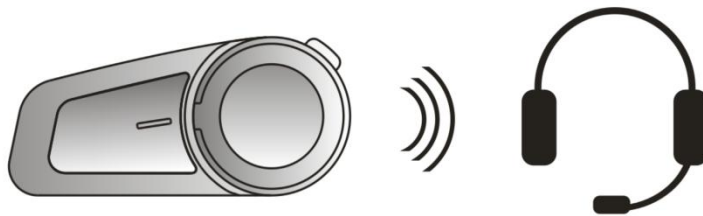
8. Pairing Methods

8.1 Two ways for FX6 to enter pairing status

8.1.1 **Mode 1:** When the headset is off, press and hold On/Off Button for 6 seconds. There is a “Pairing” sound prompt, blue and red lights flash alternately.

8.1.2 **Mode 2:** When the headset is on, press and hold Multi-function button for 6 seconds. There is a “Pairing” sound prompt, blue and red lights flash alternately.

8.2 Pairing with the Non-Fodsports FX6 Bluetooth device



Step 1: Place the FX6 and the device within 1 meter’s visible range.

Step 2: Set the Non-FX6 Bluetooth device into pairing status.

Step 3: Follow step (8.1.2), FX6 enters pairing status.

Step 4: Short press FX6 on/off button to search the device, the “intercom connected” sound prompt means the 2 items are successfully paired.

Note 1: In step 4, the intercom connection must be initiated by FX6.

Note 2: When intercom, press FX6 on/off button to disconnect the intercom, then press again to reconnect.

8.3 Pairing with Mobile, GPS and MP3



Step 1: Place the “FODSPORTS FX6” and the device within a visible range of 1 meter.

Step 2: Follow step (8.1.1), “FODSPORTS FX6” enters pairing status.

Step 3: Turn on the device Bluetooth, search “FODSPORTS FX6” to pair. The “connected” sound prompt means the items are successfully paired.

8.4 Pairing between two FX6



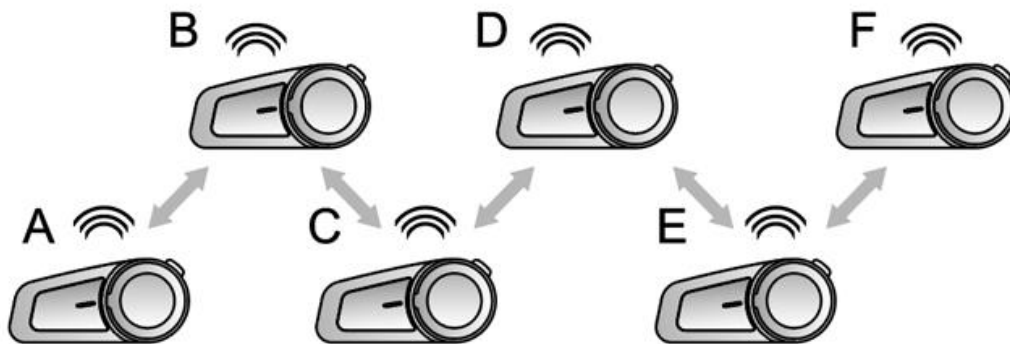
Step 1: Ensure both FX6 are off and within 1 meter visible range.

Step 2: Follow step (8.1.1), both FX6 are in pairing status.

Step 3: Short press the multi-function button or on/ off button on either FX6 to search the other one, you will hear “intercom connected” when successfully paired.

(NOTE: In the pairing status, short press multi-function button on either FX6 to search, can be used for connection between 2 FX6 only. For other non-FX6 device, you have to press the on/ off button.)

8.5 Group Intercom Settings



Note: For group intercom, the first and last FX6 CAN NOT be paired.

Step 1: Clear the pairing record between A and F

Press and hold the on/off buttons of A and F for 6 seconds until you hear sound prompt “power off”, then hold them for another 3 seconds.

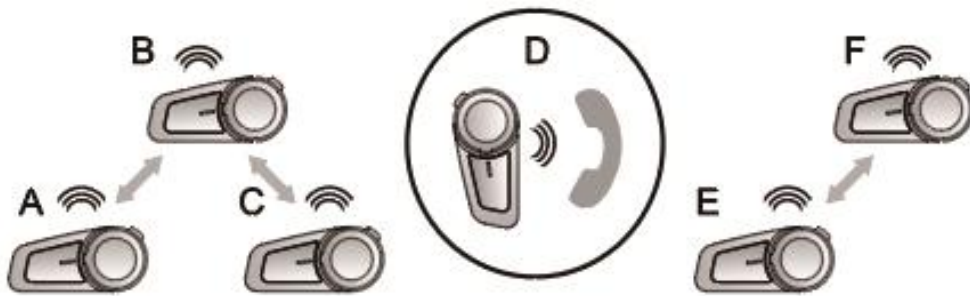
Step 2: Refer to the pairing operations in 8.4 for following operations

1. Pair A and B, turn off B after successfully paired;
2. Pair B and C, turn off C after successfully paired;
3. Pair C and D, turn off D after successfully paired;
4. Pair D and E, turn off E after successfully paired;
5. Pair E and F.

Step 3: Connect A, B, C, D, E and F in series

1. For D, press the on/off button to connect with E;
2. For C, press the on/off button to connect with D;
3. For B, press the on/off button to connect with C;
4. For A, press the on/off button to connect with B;
5. E and F are not disconnected after the step 2 is completed.

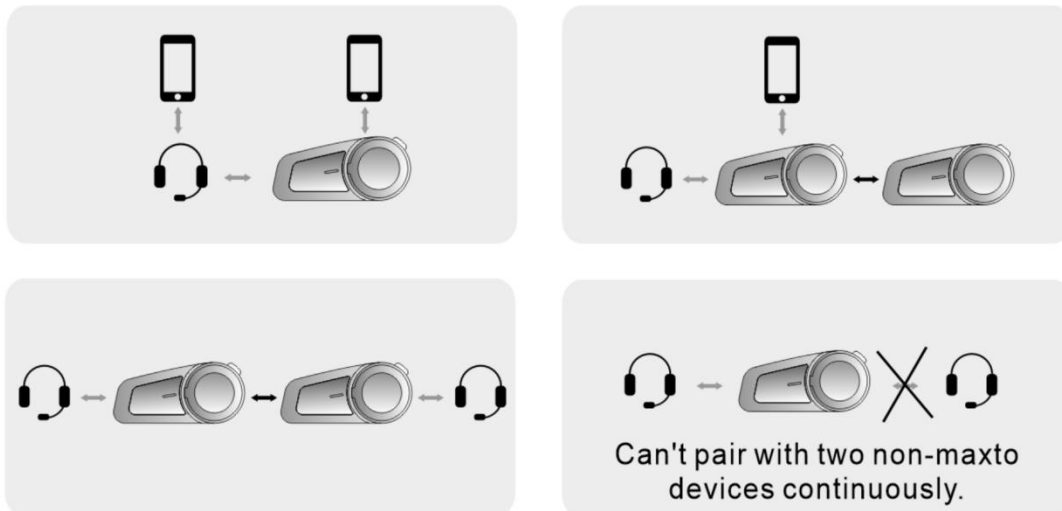
Now A, B, C, D, E and F are all paired successfully, you can enter group intercom.



Note: During the 6 people group intercom, if D receives a call, D will be disconnected temporarily from the group. A, B and C form a group, E and F form a group.

After D finished call, D will be reconnected into the group intercom automatically and the 6 people group intercom resumes.

8.6 Simultaneous connection of multiple devices



Note: FX6 CAN NOT pair with two non-FX6 devices at the same time.

Note: Please DO NOT pair FX6 with mobile phone before you pair it with Bluetooth headset, otherwise, it may cause intercom communication error. It won't happen if FX6 is not connected with phone.

9. Priority of Functions

Level 1: Phone call & Intercom by introduced adapter

Level 2: Intercom introduced by Two-way radio cable

Level 3: Bluetooth Intercom

Level 4: FM & Music

10. Specifications

Bluetooth Version	5.0
Operating Range	Up to 1000 meters
Standby Time	Up to 200 hours
Operating Time	Up to 10 hours
Charging Time	Approximately 2.5 hours
Charging Interface	Micro USB Android universal plug
Battery Type	Rechargeable Li-Polymer battery
Power Supply	5V – 0.5A
Operating Temperature	14F-131F (-10°C-55°C)
Storage Temperature	-4F-140F (-20°C~60°C)

* The actual time may vary from the phone type and usage.

* The working distance will be deviated for the influence of environment and climate

11. Matters Need Attention

1. The Bluetooth name is “FODSPORTS FX6”.
2. The appropriate storage temperature for this device is between -20°C and 60°C. Please do not store it in environment with too high or too low temperatures, otherwise the service life will be affected.
3. To avoid explosion, please do not expose it to open fire.
4. If you're not using it for a long time, please keep the device in dry place and charge it regularly (once every 3 months), to preserve battery life.

12. After-Sale Service

For any quality problem or missing accessories, especially pairing problem between 2 or more FX6 headsets, please feel free to contact us at email:

liveconn@qq.com. We're always here ready to help, will reply to you in 12 hours.