

Imillet Video Capture Dongle

HDV-UH60-CPT

USER Manual

Contents

I. Introduction	3
II. Features	3
III. Specifications	4
IV. Connect and Operate	6
V. Software instruction	8
VI. Packing List	13
VII. General Problems and solution	13

I. Introduction

Imillet HDMI Video Capture Dongle is in portable size and easy to carry, which is of superior performance, compatibility and easy installation features.

- a. capture HDMI 1080p 60 input and output signal;
- b. Compatible with Windows, Linux, Mac OS X and USB 3.0 interface; Compatible with many USB 3.0 chipset (Intel, Renesas, ASMedia, Fresco Logic); compatible with PCIE Gen1.1 x1 expansion via USB 3.0 interface;
- c. Meets UVC and UAC standard, without having to install any drivers and extra settings. Truly PnP (Plug and Play), easy to use.

II. Features

- 1.It is compatible with Windows, Linux, OS X operating systems
- 2.USB3.0, 300-350MB/s throughput and it is compatible with USB 2.0
- 3.The process of video and audio is done by the dongle and will not occupy CPU.
- 4.It can automatically detect the input video formats and it will adjust to the set output size and frame rate automatically.
- 5.The input and output video signal can reach 1080p/60 Hz.
- 6.It is compatible with UVC video capture and YUV 422 video output.

III. Specifications

Host Interface	USB3.0, *300-350MB/s, USB2.0, *40MB/s
Input Interface	HDMI interface
HDMI Input Formats	480i,480p,576i,576p,720p50,720p60,1080i50,1080i60, 1080p24/25/30/50/60;
Output Formats Resolutions:	640x480/720x480/720x576/768x576/800x600/1024x768/ 1280x720/1280x800/1280x960/1280x1024/1368x768/ 1440x900/1600x1200/1680x1050/1920x1080/1920x1200 640x360/856x480/960x540/1024x576
Frame Rate:	25/29.97/30/50/59.94/60 fps
Audio and Video capture	standards of UVC and UAC
Support of OS	Windows 7; Windows Server 2008 R2 Linux (Kernel version 2.6.38 and above). OS X (10.8 and above)
Software Compatibility	Windows Media Encoder (Windows) Adobe Flash Media Live Encoder (Windows, OS X) Real Producer Plus (Windows)

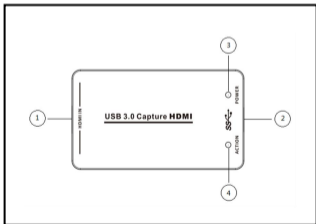
	<p>VLC (Windows, OS X, Linux)</p> <p>QuickTime Broadcaster (OS X)</p> <p>QuickTime Player (OS X)</p> <p>Wirecast (Windows, OS X)</p> <p>Potplayer(Windows)and etc.</p>
Development interface compatibility	<p>DirectShow (Windows), DirectSound (Windows),</p> <p>V4L2 (Linux), ALSA (Linux)</p> <p>OS X (QuickTime)</p>
Size	98x56x16 (L/W/H, mm)
Power consumption	$\leq 2.5W$
Working Temperature	0-50 deg C
Storage Temperature	-20-70 deg C
Storage Humidity	5%-90%

V. Connect and Operate:

1. Connect the signal sources such as Blu-Ray Player, Play Station, audio/video receiver, satellite receivers with HDMI output interfaces with a HDMI cable to the device HDMI input
2. Insert the USB3.0 cable head to USB3.0 interface, the other side of the cable into your computer's USB3.0 interface.
3. HDMI to USB3.0 Video Capture Dongle is based on UVC (USB video class), UAC (USB audio class) STANDARD, without having to install drivers and settings. After installation in operating system, the relevant video and audio devices will be added on. In Windows, for example, will have new image device:

USB3.0 Capture video;

USB3.0 Capture audio;



1. HDMI Input: This slot is where you connect the HDMI source output from DVD, PS3, Set-top Box and Note Book.
2. USB3.0 Capture out: This slot is where you connect to the USB3.0 input of the computer or Notebook.
3. Power indicator: This LED illuminates when the device is connected to computer USB port.
4. Action indicator: This LED illuminates when the device capture the video normally.



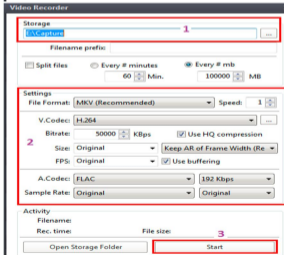
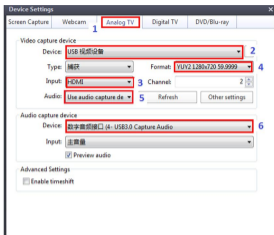
VI. Software Instruction

Windows Operation

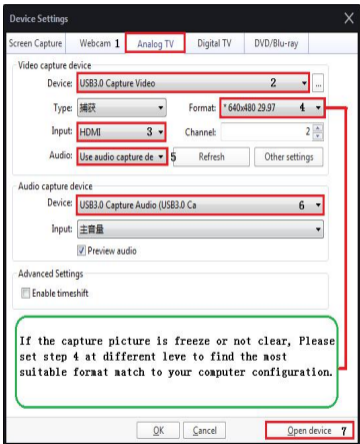
1. Install “Potplayer” on computer; Double click “Daum Potplayer” to open.
2. Use ”Alt+D” to open device settings page. Select “Analog TV” page.
 - * Select “USB3.0 Video Capture” in Video Device item.
 - * Select “HDMI” in Input item.
 - * Select suitable capture resolution in Format item.(Per PC configuration

If low configuration PC PLS choose lower format output)

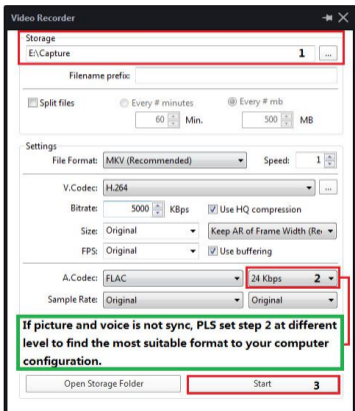
- * Select “USB3.0 Audio Capture” in Audio Device item.
 - * Click “Open device” to open the capture interface.
4. use ”Alt+C” to open the Video recoder page.
 - * Select storage position;
 - * Set video and audio capture setting;
 - * Start to capture video and audio;



If freeze capture PLS choose format less than 1280P.



If voice and picture not sync, PLS choose A. Codec FLAC and less than 192kbps.



OS Operation

1. Install and Open "QuickTime player";
2. Find File>New Movie Recording;
2. To "Movie Recording" page and Select "USB3.0 Capture Video" and "USB3.0 Capture Audio";
3. Start to recording;
4. Finish recording and select storage position per direction.



VI.Packing List

1. HDMI to USB3.0 Video Capture Dongle-----1pcs
2. USB3.0 Cable-----1pcs
3. User Manual -----1pcs

VII. General Problems and solution:

(1) Connection problems: Computer could not recognize the device; no signal; over heat when connected

① **Check HDMI cable:** use 19 Pins 1.4 version over HDMI cable.

② **Check USB port:** Use USB 2.0 and USB 3.0 port. Ensure the usb and HDMI cable connect solid with USB port.

③ **Try unplug and then plug:** If the HDMI cable and USB port is in good condition, PLS try to unplug and plug the device for times to ensure perfect connection.

(2) Capture software problems:

① **Compatible capture software:** Windows Media Encoder (Windows); Adobe Flash Media Live Encoder (Windows, OS X); Real Producer Plus (Windows) VLC (Windows, OS X, Linux); QuickTime Broadcaster (OS X); QuickTime Player (OS X); Wirecast (Windows, OS X) ; Potplayer(Windows)and etc. If the software performances bad, try another pls.

② **Software problem:** Close the software-unplug the device-wait for seconds-plug the device-open the software-perfect capture.

(3) Computer configuration problems:

High Computer configuration is seriously important to flawless capture.

Imillet capture device convert video source to HDMI signal and then show and storage in capture computer. Thus crystal flow capture output requires high computer configuration.

For crystal 1080P capture signal we suggest computer configuration as below:

System	Windows10/8.1/7(64/32bit)	
Computer	Desktop	Laptop
CPU	i5-4440 3.10Ghz	I7-4810MQ and above
	i7-47770 3.4Ghz above	
NVIDIA	NVIDIA GTX660 above	NVIDIA GT870M
Ram	4GB RAM above	4GB RAM and above
HDMI Cable	Version 1.4(19 pins)	Version1.4(19core)
Video source	1080P below	1080P below
Suggestion	Suggest use SSD	Suggest use SSD

If the capture computer configuration is not high enough for 1080P, these problems might occur: Latency, Freeze capture, Video and audio not Syn, No capture signal, Only audio no video, over-heated etc. We strongly suggest to update your computer configuration. If it is difficult to update the configuration, PLS try to set the output format and A.code as page 10 and 11.

(4) Video source problem:

Imillet capture card support the HDMI source up to 1080P. Over 1080P like 4K, there will be no signal. PLS transform video source less than 1080P and then capture. Video source under 1080P will perfectly compatible with Imillet capture card.