



arlo®

Arlo Chime
Quick Start Guide





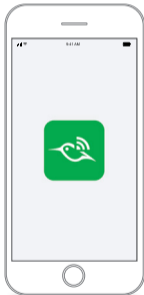
What's in the box



Arlo Chime

Get the Arlo mobile app

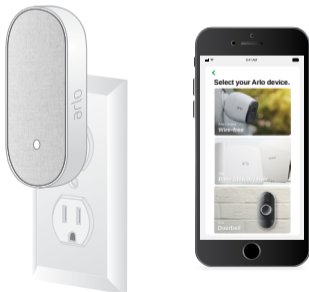
You must use the app to install your Arlo Chime. The app provides step-by-step instructions.



Power your chime and add it to your account

Note: You must use your chime indoors.

1. Plug your chime into a power outlet.
2. Use your app to set up your Arlo Chime and add it to your Arlo account.



Use your Arlo app

Use your app to set up and manage all your Arlo devices and your Arlo account.

To view useful tutorial videos, find troubleshooting tips, or get support, scan the QR code or navigate in your browser to visit

[*www.arlo.com/support*](http://www.arlo.com/support).



© Arlo Technologies, Inc. Arlo, Arlo logo, and Every Angle Covered are trademarks of Arlo Technologies, Inc. Other trademarks are for reference purposes only.

Si ce produit est vendu au Canada, vous pouvez accéder à ce document en français canadien à arlo.com/docs.

(If this product is sold in Canada, you can access this document in Canadian French at arlo.com/docs.)

For regulatory compliance information including the EU Declaration of Conformity, visit www.arlo.com/about/regulatory/.

FCC ID: 2APLE18300389
IC ID: 23815-18300389



Arlo International, Ltd.
Floor 3, Building 3 University Technology Center
Curraheen Road, Cork, Ireland



Arlo Technologies, Inc.
2200 Faraday Ave. Suite 150
Carlsbad, CA 92008 USA

www.arlo.com
www.arlo.com/support

December 2018



201-24145-03