

PS1X PRICE COMPUTING SCALE
USER MANUAL



Important Safety Information

- 1) Please read these safety instructions carefully.
- 2) Keep this user manual for later reference.
- 3) This product meets the relative requirements of the national standard IEC 60950: 2001 'Safety of information technical equipment'.
- 4) Thunder can hurt this product and even your personal safety, so please pull out the network cable and other conductor connecting external attachment in thunder days.
- 5) Please don't spatter any sundries or liquid into the machine; please don't stuff anything inside this product, otherwise it may cause short circuit.
- 6) Please be sure not to change the battery with a wrong type one, otherwise there is danger of explosion. Be sure to deal with used battery with the way of dealing with waste battery.
- 7) Please lay this product packed in the 10-40°C environment for at least 2 hours before turning on if it was stored in less than 10°C temperature environment during the transportation, so as to avoid the damage on the product due to a big change of environmental temperature.
- 8) Please don't throw anything on this product or hit against it.
- 9) Please do not allow children to climb up on the product, in case the product drops and hurt them.
- 10) Switch off the product if you will not use it in a long time.
- 11) The non-experts or non-authorized people please don't open the machine shell.

STATEMENT

More information about software, driver, etc. please download from:

<http://download.aclas.com/en/index1.html>

CONTENT

1	Unique Functions	1
2	Excellent Functions	1
3	Accessories	1
4	Technical Specification	2
5	Appearance and Dimension	3
6	The Installation of Customer Display	4
7	Operation	7
7.1	Function Keys Operation	7
7.2	Further Functions Explanation	8
7.2.1	Diagram of Basic Operation Process.....	8
7.2.2	Unit Price Setting Function.....	8
7.2.3	Give Change Function	9
7.2.4	Tare Function	9
7.2.5	Pending order & Accumulation Function.....	9
7.2.6	Sleep Mode Function	10
7.2.7	Backlight Setting	10
8	Calibration	11
8.1	Destroy the Sealing.....	11
8.2	Fine Adjustment of Gravity Acceleration Compensation Value.....	12
8.3	Adjustment of Gravity Acceleration Compensation Value	13
8.4	Zero/Full Weight Learning Methods.....	14
9	Contact Us	14

1 Unique Functions

- Unique super power-saving design, 3 pieces of D batteries support 2-year working (working condition: 8 hours/day, 30 times/hour, 10 seconds/weighing).
- Unique multi-customer accumulating function (patent), enables simultaneous service for 5 customers. Powerful function makes one scale used as five scales.
- Insect-proof design (patent) prevents insect's entrance, effectively reducing 80% scale failure rate.
- Auto power-saving design with vibration-detect mechanism, scale can quickly wakeup from standby (21 μ A) and return to working mode by any loading or key touching.
- Cost saving: 3 pieces of D batteries works for 2 years. Compared to traditional rechargeable battery, it is lower costing and no need of professional maintenance.
- High-sensitive light touch keyboard and super life-long carbon membrane.
- Daily total turnover check function.
- The most feature-rich in redisplay function, able to redisplay the transaction process which including unit price, piece weight, total price, price unit and serial number, clearer than other scales in market.
- High-resolution 3-line LCD display, able to display weight, unit price and total price in the same screen.
- Well-designed combined function keys, convenient and easy to operate.

2 Excellent Functions

- High anti-interference. The radiation intensity to radio frequency electromagnetic fields up to 10v/m.
- Auto-power saving design, will enter the stand-by status automatically without any operation (user-defined 4~200 seconds at will, 200 seconds won't enter auto-power saving status) only consuming 21 μ A, able to be awake by any loading or operation due to the inner shaking mechanism. (Please tap the platter when there is no response in loading).
- Adjustable backlight level: Users is able to adjust the backlight brightness according to actual need.
- CHG function, make sure to give accurate change.
- Price Lock function, easy to sell item in same price.

3 Accessories

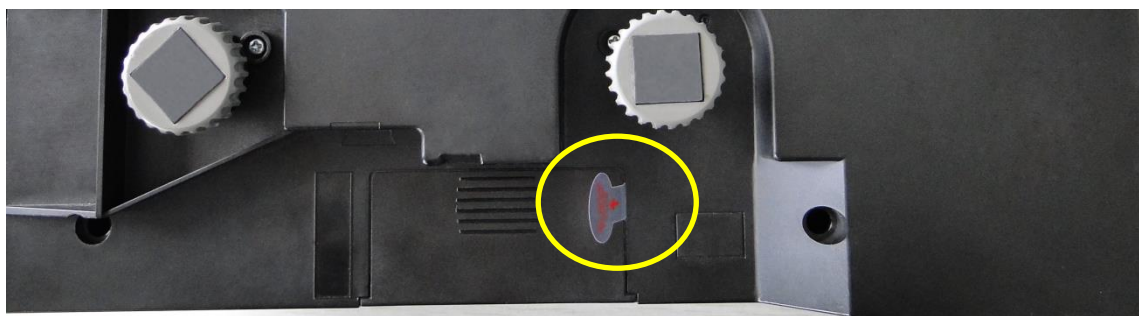
- 1) Main Set
- 2) Stainless Platter
- 3) User Manual
- 4) Battery

4 Technical Specification

Module	PS1XB
Basic Features	With backlight
Accuracy Class	Ⓜ
Weighing Capacity (Max.)	15lb/30lb; 30lb/60lb
Verification Scale Interval	0.005lb/0.01lb; 0.01lb/0.02lb
Weighing Capacity (Min.)	0.1lb; 0.2lb
Tare (Max.)	-9.995lb; -29.99lb
Power Supply	3 pcs D batteries
Battery Estimated Use Time	Approximate 2 years (8 hours/day, 30 times/hour, 10 seconds/weighing)
Power Consumption	Soft shutdown < 5μA, Stand by: 21μA, Working: 4.6mA, Backlight on: <5.5mA
Working Temperature	0°C-40°C
Platter Size	Stainless steel tray: 330*230 mm

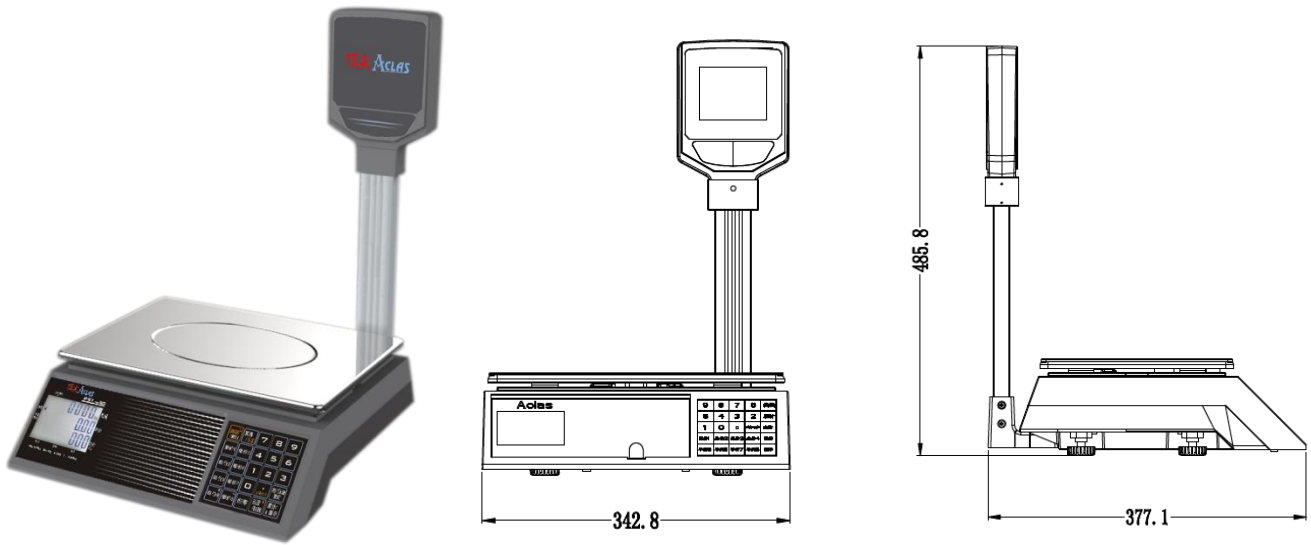
Note:

The machine is shipped with 3pcs battery. Please remove the battery's insulating strip before use.

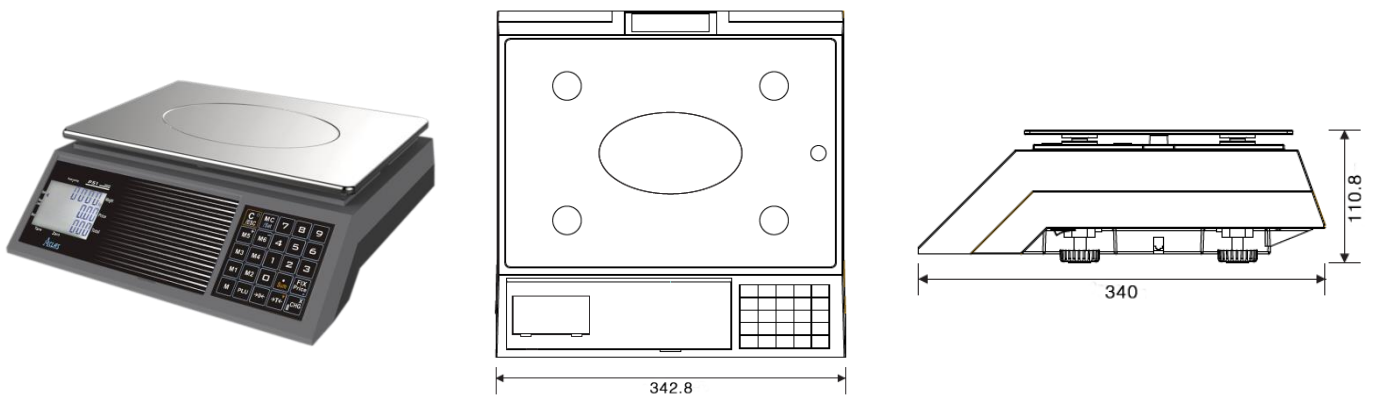


5 Appearance and Dimension

Pole Type (Unit: mm):



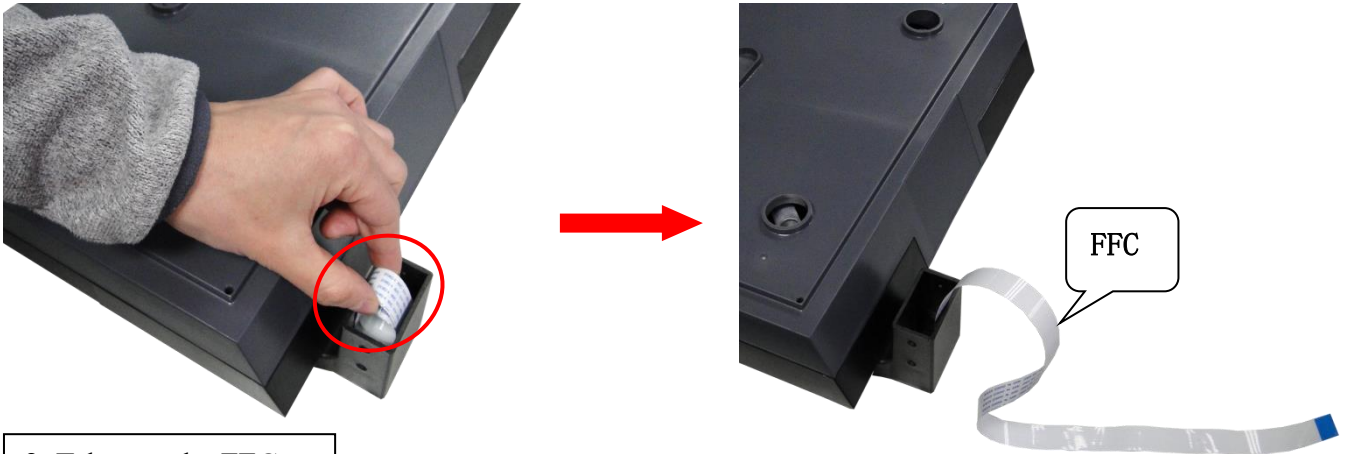
Bench Type (Unit: mm):



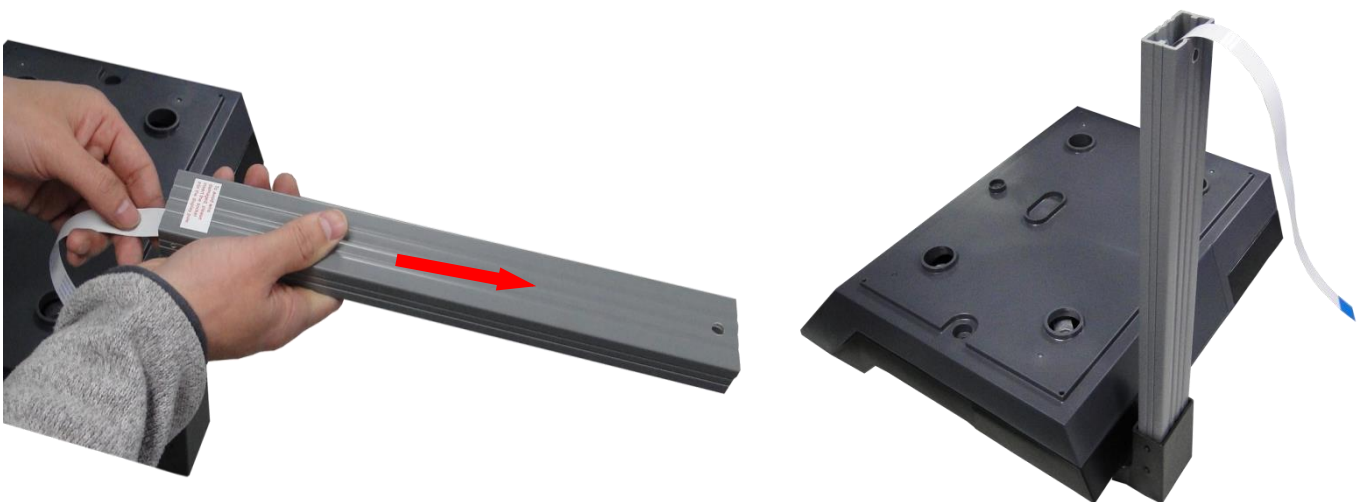
6 The Installation of Customer Display



1. Take out the fix set, open the LCD cover and loose the four screws of display pole.

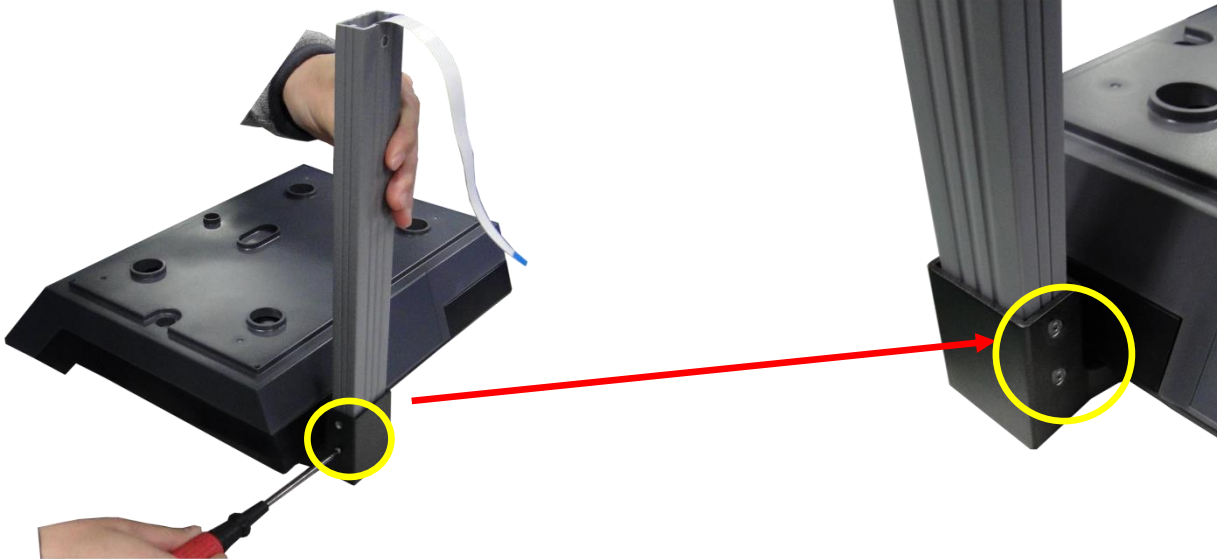


2. Take out the FFC.

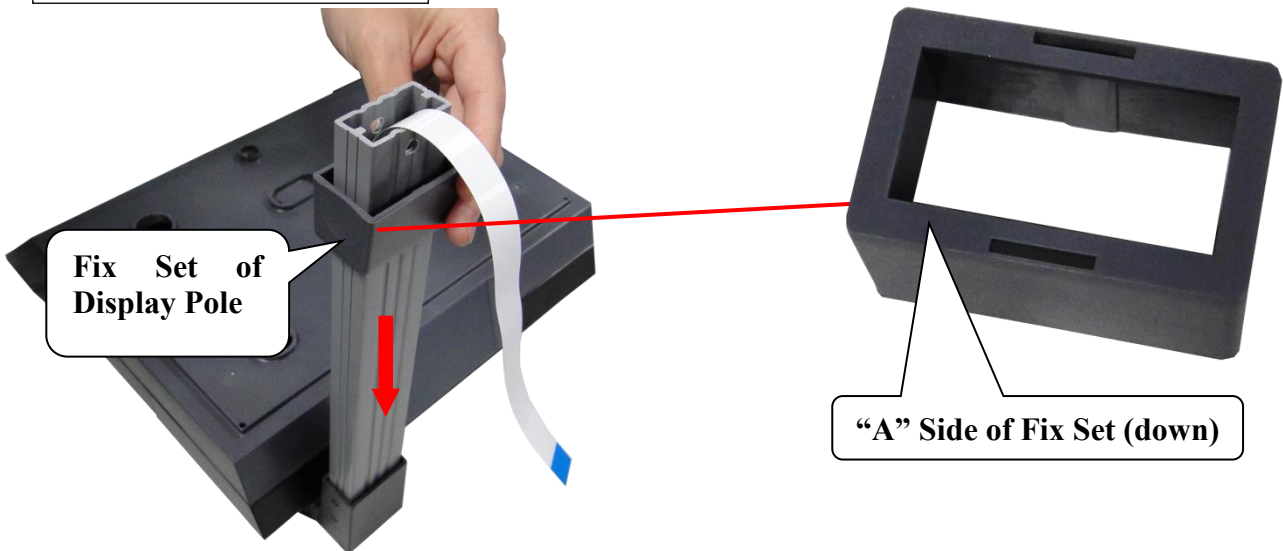


3. Insert the FFC cable through the display pole as the arrow shows.

4. Fix the display pole on the scale platter.



5. Tighten the four screws.



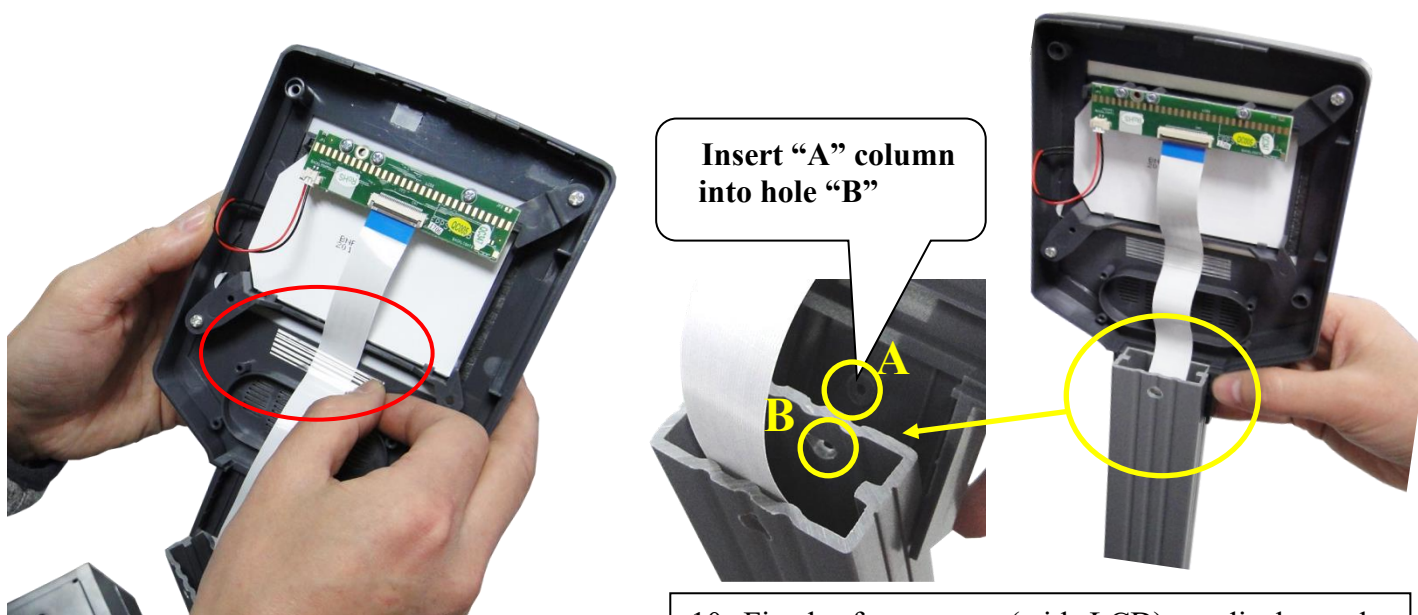
6. As shown, put on the fix set ("A" side down).



7. Remove the tape circled in the picture and stick it aside.



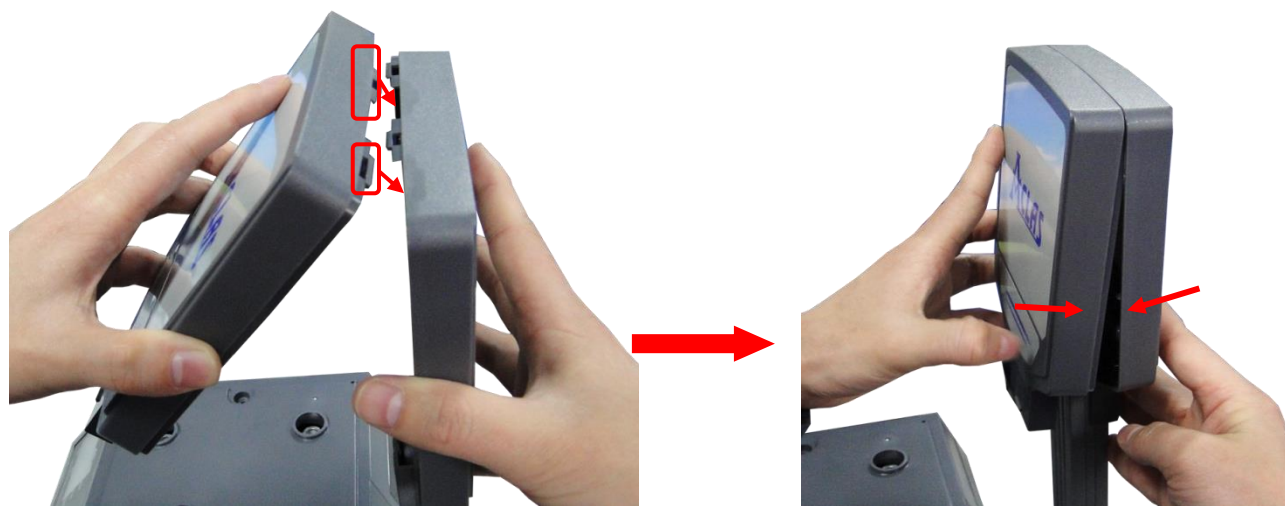
8. Open the FFC socket lock, plug and lock the FFC cable. (Note: Keep blue side upper).



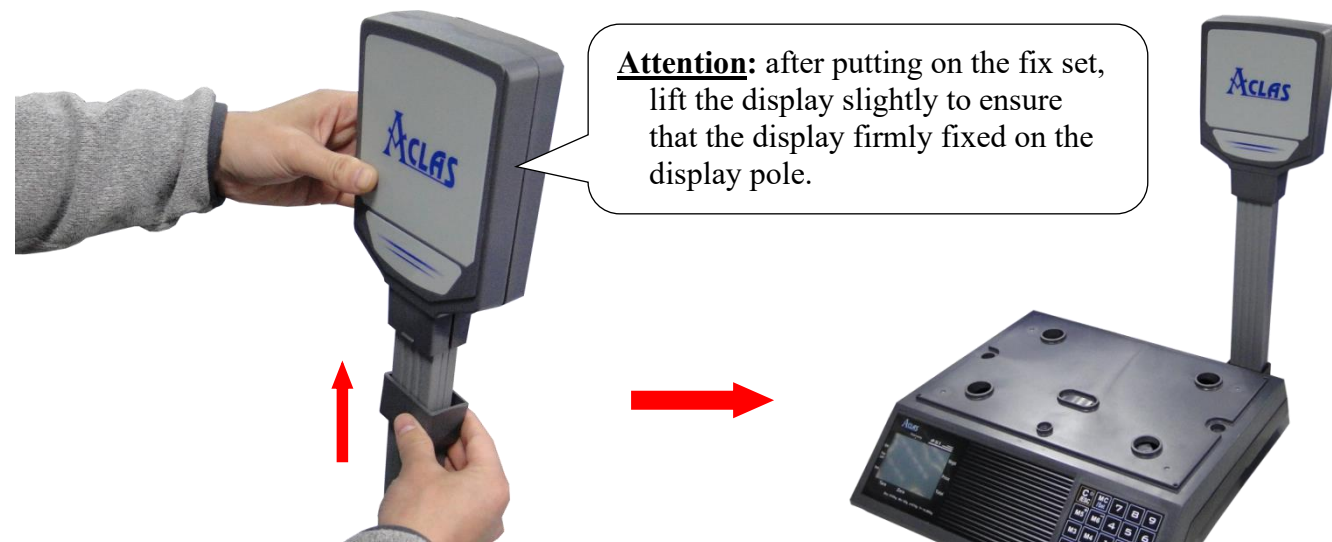
Insert "A" column into hole "B"

9. Fix the FFC with the tape.

10. Fix the front cover (with LCD) on display pole. Insert the FFC through the pole, straighten the cable then fixing.



11. Assemble the display as shown in above pictures.

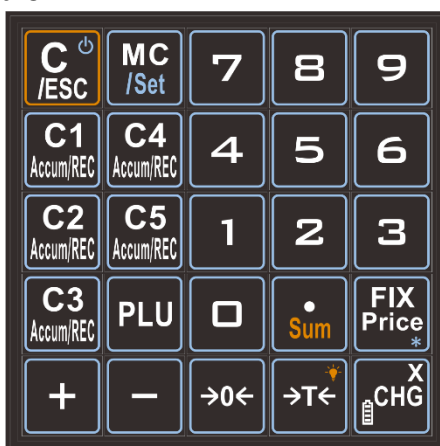


Attention: after putting on the fix set, lift the display slightly to ensure that the display firmly fixed on the display pole.

12. Put on the fix set. The whole installation is finished.

7 Operation

7.1 Function Keys Operation



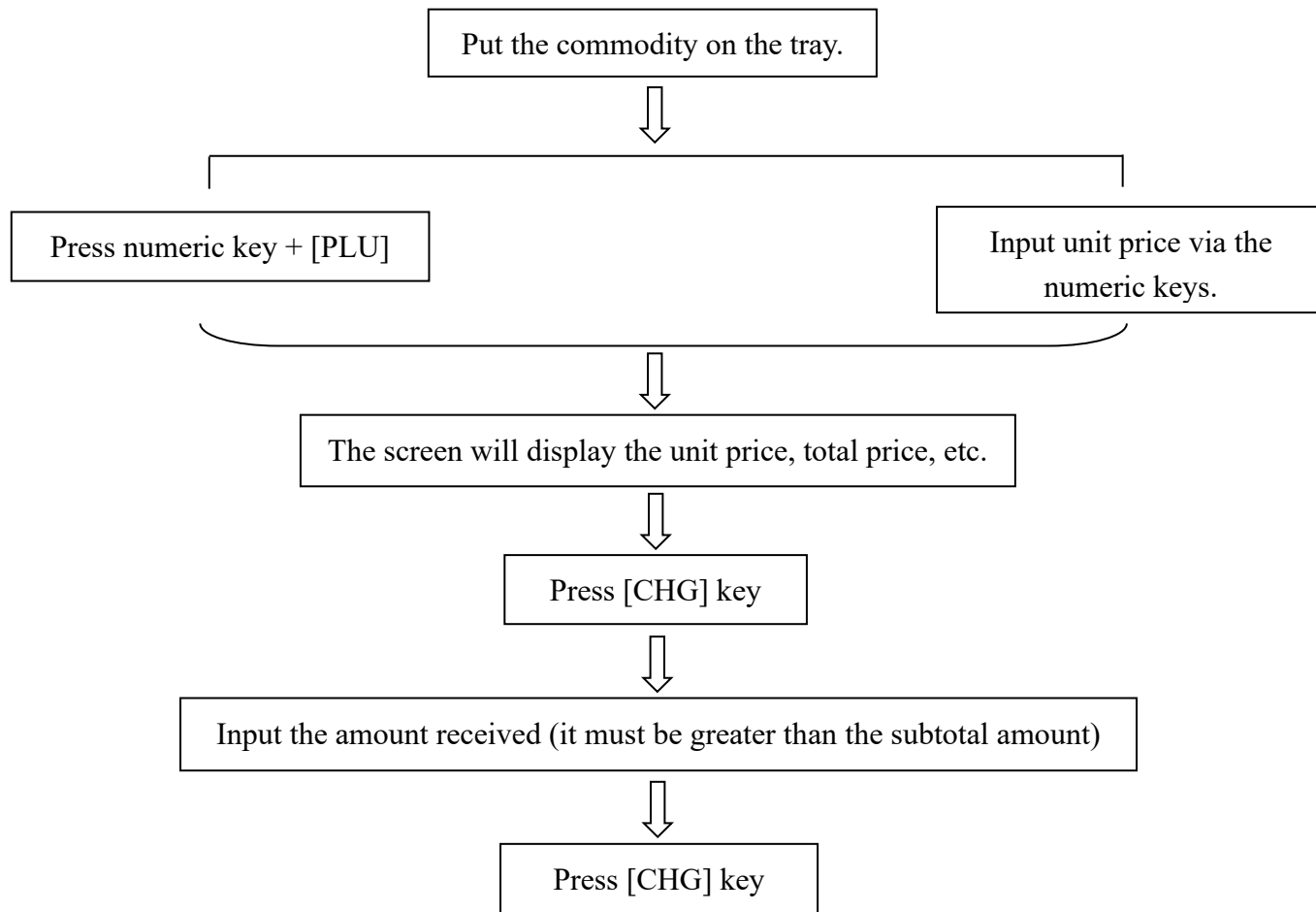
Keys	Functions
	<ol style="list-style-type: none"> 1) Press and hold this key for 2.5 seconds to turn on/off the scale. 2) Press to clear error data input or to exit. <p>(Note: please keep scale tray empty during scale startup.)</p>
	<ol style="list-style-type: none"> 1) Press and hold this key for 2.5 seconds to enter Set Mode. 2) Press to exit any setting or operation steps.
	C1-C5: Customer1 to Customer5, used for sales pending orders, accumulation and record of 5 customers. See 7.2.5 Pending order & Accumulation Function .
	<ol style="list-style-type: none"> 1) PLU price setting: 70 prices can be set, see 7.2.2 Unit Price Setting Function. 2) When you press numeric keys, and press this key, it will call out the price of that PLU.
	<ol style="list-style-type: none"> 1) Zero function. Use to remove small variations in the scale's zero. 2) Press and hold for seconds to check the software version and the time of auto-power saving.
	<ol style="list-style-type: none"> 1) Decimal point key. 2) Press and hold for 2.5 seconds, the scale will display the total sum. Press [→0←] key to clear total sum records. <p>Note: ① Each sale record needs to be accumulated if you want to use 'Sum' function. ② Total sum starts from the records cleared last time to current status.</p>
	<ol style="list-style-type: none"> 1) Press to deduct the packing weight. See 7.2.4 Tare Function. 2) Press for 2.5 seconds to change backlight brightness level. See 7.2.7 Backlight Setting.
	<ol style="list-style-type: none"> 1) Press to call out Price Lock Function. The index on the LCD lit means the scale is in Price Lock function. You're able to sell commodities at same price. 2) Steps to switch the weighing unit: ① Power on the scale, during counting down, press and hold [MC/Set] for 2.5 seconds to enter Set Mode; ② Press [FIX Price] to switch unit; ③ Press [MC/Set] key to confirm the unit selected; ④ Long press [C/ESC] key to turn off the scale and restart it to finish the unit switch.



- 1) Press to give change. See [7.2.3 Give Change Function](#).
 - 2) Press to check the battery voltage when the weight is 0.
- Note: Please replace the 3PCS dry batteries when the voltage is lower than 3.3V.

7.2 Further Functions Explanation

7.2.1 Diagram of Basic Operation Process



- Note:**
1. Please make sure the scale is on a flat and stable surface before using.
 2. Please keep scale tray empty during startup.

7.2.2 Unit Price Setting Function

Press and hold [MC/Set] key for 2.5 second to enter unit price setting interface:

- ① Press numeric key [1] + [PLU] key to set the unit price;
- ② Input unit price via numeric keys [0] - [9];
- ③ Press [MC/Set] key to confirm the unit price;
- ④ Press [FIX Price] key to switch weighing unit. Press [MC/Set] key to confirm. (Skip this step if weighing unit is no need to change);
- ⑤ Repeat above steps (①~④) to set 70 unit prices;
- ⑥ After finish unit price setting, press [MC/Set] key to exit and go back to weighing mode. Press numeric key + [PLU] key to call out the preset unit price.

7.2.3 Give Change Function

- ① After weighting, the display will show the total price;
- ② Press [CHG] key to enter Give Change function;
- ③ Input the amount received;
- ④ Press [CHG] key to give change.

Note: Give Change function is not allowed if the paying amount is less than total. Press [C/ESC] key to exit this function.

7.2.4 Tare Function

- ① Put the container or wrapper on the scale tray;
- ② Press [Tare] key to enter weight-deducting status;
- ③ Put the item into the container or wrapper. The LCD will display the net weight.
- ④ Remove the item after weighing;
- ⑤ Press the [Tare] key, the scale will return to normal weighting status.

7.2.5 Pending order & Accumulation Function

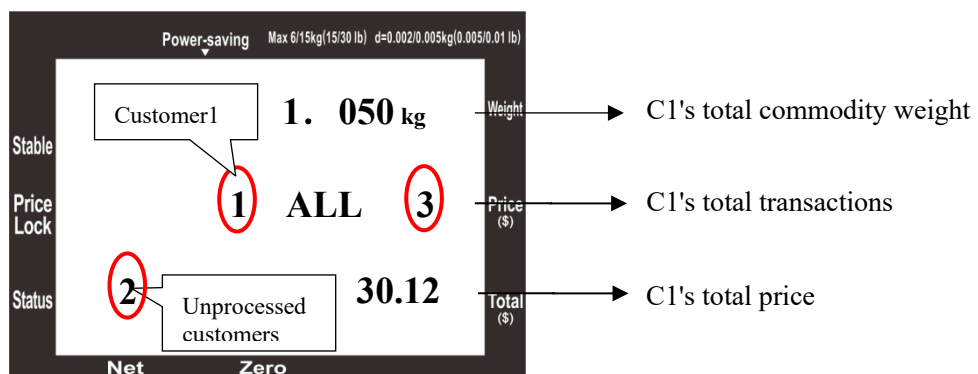
Take Customer1 [C1] as an example. Please follow below steps:

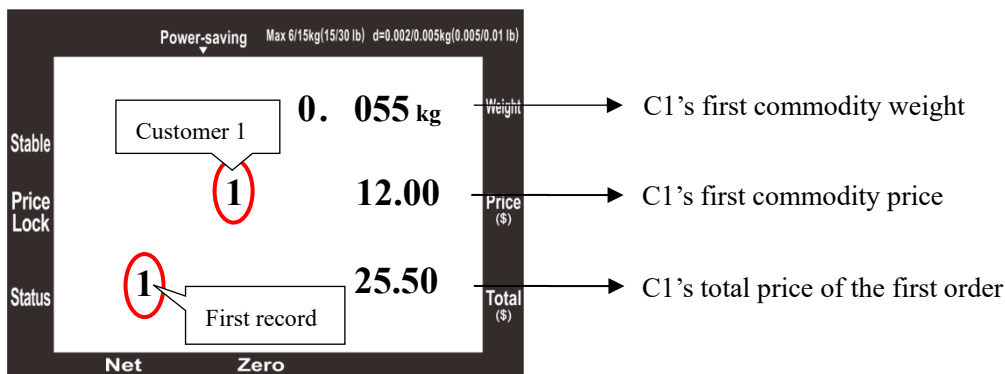
- ① Weight the PLU under normal sales weighing status;
- ② Press [C1] key to carry out pending and accumulate operation for the first customer's commodity;
- ③ Repeat the above steps to accumulate the pending orders of the first customer's commodity one by one.

The LCD screen will display the total weight of the commodity, the number of transactions and the total price as shown in the following picture;

- ④ Press the [C1] key continuously to get the cumulative record and transaction details of the first customer's pending order one by one;
- ⑤ Press the [C/ESC] key to clear the accumulated records of all pending orders of the first customer.

Note: This scale can perform pending orders, accumulation and record operations for five customers ([C1]-[C5] keys). The operations between the five customers can be carried out cross-over without affecting each other. Each customer can accumulate up to 25 records.





7.2.6 Sleep Mode Function

Sleep Mode Function aims to set the scale to lower-power state by setting the time of “non-operating”. The scale will wake up by any loading or key touching.

- ① Press [MC/Set] key to enter the Set mode during the countdown of power on;
- ② Input the time of non-operating and press [MC/Set] key to confirm;
- ③ Press [C/ESC] key to exit.

Note: When scale is in Sleep Mode, “Power-saving” index will be shown on display.

Default non-operating time of scale is 5 seconds. If it’s set to be 200 seconds, the scale won’t go into Sleep Mode (no “power-saving” index shown).

7.2.7 Backlight Setting

- ① Backlight On/Off:
 - a. Under Weighing Mode, press and hold the [💡] key for 2.5 seconds to open or close the operator display backlight;
 - b. Press [MC/Set] key to enter Set Mode during the countdown of power on → press and hold the [💡] key for 2.5 seconds to open or close the customer display backlight → press [C/ESC] key to exit.
- ② Backlight level:

Press [MC/Set] key to enter Set Mode during the countdown of power on → press the [💡] key to switch the backlight level (0-7 level, default backlight level 3) → press [C/ESC] key to exit.
- ③ Backlight time: Backlight time is to set how long backlight is on.

Press [MC/Set] key to enter Set Mode during the countdown of power on → input the backlight time → press the [💡] key to confirm → press [C/ESC] key to exit.




Note: Default backlight time is 2 seconds. User can set 1~200s as needed. If set to 200s, the backlight will be always on (Display will show index “F” at Total column).

Backlight time must be set shorter than non-operating time. When scale goes into Sleep Mode, backlight will be off.

8 Calibration

Note: The Calibration must be only accessed by official office of weights and measures inspectors or licensed calibration technicians.

8.1 Destroy the Sealing

No.	Description	Picture
1	Upside down the scale and then find out the position of sealing as the picture shows.	
2	Destroy the sealing by tearing the fragile lead sealing. Then, take off the sealing cover.	
3	Use metal to make a short circuit on the two short pins lightly as the picture shows.	
4	After hearing a long 'beep' sound, the scale enters into Factory Mode, gravity acceleration compensation value adjustment and zero/full weight learning can be carrying out.	

Note: If the weight is not calibrated correctly after entering into Factory Mode, please do not long press [C/ESC] key to exit Factory Mode!

8.2 Fine Adjustment of Gravity Acceleration Compensation Value

Due to the difference in the latitude and altitude used, the acceleration of gravity needs to be readjusted. If the weight deviation range is small, it can be adjusted by fine adjustment. The specific operations are as follows:

No.	Steps	Operation
1	Power on the scale	Long press the [C/ESC] key to power on the scale, and then enter into normal weighing mode.
2	Destroy the sealing, enter into Factory Mode	Destroy the sealing according to the method mentioned in Chapter 8.1 Destroy the Sealing . Use a metal to make a short circuit on the two short pins. After hearing a long ‘beep’ sound, the scale enters into the Factory Mode.
3	Fine adjustment of gravity acceleration compensation value	Put an item of known accurate weight on the tray, and then press [+] or [-] key to fine adjust the compensation value till the compensation value is accurate.
4	Exit the Factory Mode	After calibration, please long press [C/ESC] key to shut down and exit the Factory Mode.

8.3 Adjustment of Gravity Acceleration Compensation Value

Due to the difference in latitude and altitude used, the acceleration of gravity needs to be readjusted. It can be corrected by inputting gravity acceleration compensation value directly. The specific operations are as follows:

No.	Steps	Operation
1	Power on the scale	Long press the [C/ESC] key to power on the scale, enter into normal weighing mode.
2	Destroy the sealing, enter into Factory Mode	Destroy the sealing according to the method mentioned in Chapter 8.1 Destroy the Sealing . Use a metal to make a short circuit on the two short pins. After hearing a long ‘beep’ sound, the scale enters into the Factory Mode.
3	Adjustment of gravity acceleration compensation value	<p>Please refer to ‘Chapter 7 Acceleration of Gravity Table’. (If the Total Price column not zero, please press [C/ESC] key to clear it.)</p> <p>When the compensation value is positive: Please enter the compensation value according to [2500XXX] format. E.g.: the gravity acceleration compensation value of Lhasa is ‘20’, please input ‘2500020’ and then press [CHG] key to confirm.</p> <p>When the compensation value is negative: Please enter the compensation value according to [2555XXX] format. E.g.: the gravity acceleration compensation value of Mohe is ‘-73’, please input ‘2555073’, and then press [CHG] key to confirm.</p>
4	Fine adjustment of gravity acceleration compensation value	<p>Put an item of known accurate weight on the tray, then press [MC/Set] key to confirm whether the weight is accurate.</p> <p>If the weight is accurate, skip to Step 5 to exit the Factory Mode;</p> <p>For weight deviation, please press the [+] or [-] key to fine tune the weight till accurate.</p>
5	Exit the Factory Mode	After calibration, please long press [C/ESC] key to shut down and exit the Factory Mode.

8.4 Zero/Full Weight Learning Methods


If the scale still cannot be calibrated by adjusting gravity acceleration compensation value, it can be recalibrated by weight method. The specific operation of zero/full weight learning is as follows:

No.	Steps	Operation
1	Power on the scale	Long press the [C/ESC] key to power on the scale, enter into normal weighing mode.
2	Destroy the sealing, enter into Factory Mode	Destroy the sealing according to the method mentioned in Chapter 8.1 Destroy the Sealing . Use a metal to make a short circuit on the two short pins. After hearing a long 'beep' sound, the scale enters into the Factory Mode.
3	Zero weight learning	<ol style="list-style-type: none"> 1) Please make sure the scale and tray are horizontal and there is nothing on the tray; 2) Press the [C1] key continuously for two times, then it will come up a long 'beep' sound which means the zero-weight learning is successful. The weight column will display 0.000 on the screen.
4	Full weight learning	<ol style="list-style-type: none"> 1) Put the full weight on the tray; 2) Press the [C2] key continuously for two times, then it will come up a long 'beep' sound which means the full-weight learning is successful. The weight column will display full weight, e.g.: 15.000 or 30.000.
5	Exit the Factory Mode	After zero/full weight learning, please long press the [C/ESC] key to shut down and exit the Factory Mode.


9 Contact Us

Customer satisfaction is our top priority. Therefore, please don't hesitate to contact us if you have any question or suggestion. It's our honor to offer the best solution and attention for you.

You can contact us as following ways:

 **Website:** www.aclas.tw

 **Email:** oso@aclas.com

 **Facebook:** @Pinnacle Aclas

 **Twitter:** @ArmPos

We will response within one business day. Thank you so much for your time and patience :-)

