



DIMMER SWITCH

INSTALLATION & SETUP GUIDE
FOR SINGLE POLE & 3-WAY CONFIGURATIONS

iDEVICES SMART HOME SOLUTIONS

REQUIRES

- Wi-Fi® 2.4 GHz 802.11 b/g/n Compatible Network
- Router Security Settings Supported: WPA, WPA2, Or None
- Free iDevices® Connected App
- 120VAC “Line” (usually black, blue or red) And “Neutral” (usually white) Wires In Each Gang Box
- Controlling this HomeKit-enabled accessory requires an iPhone, iPad, or iPod touch with iOS 8.1 or later.
- Android™ 4.3+ Device With Bluetooth® Technology

TOOLS NEEDED

- Philips Screwdriver
- Flathead Screwdriver
- Pliers
- Wire Cutter/Stripper
- Voltage Detector

RATINGS

Input: 120VAC, 60Hz

Output: 120VAC, 60Hz

CFL/LED 150W

Incandescent/Halogen: 400W

- Not intended for critical medical or life support equipment.
- The iDevices® Dimmer Switch is not user-serviceable. Do not attempt to open the enclosure for any reason.
- The iDevices® Dimmer Switch must be installed in a manner that conforms to all applicable national, state, and local building codes.
- The iDevices® Dimmer Switch is intended for dry, indoor use only.
- Ambient operating conditions: 32° F to 104° F (0° C to 40° C), 0-90% humidity, non-condensing.
- Use with branch circuit breaker 20A or less.
- Notice – Use only copper or copper-clad wire with this device.
- Requires a dimmable bulb.
- For control of permanently installed 150W CFL/LED or 400W incandescent/halogen lamp fixtures only.
- **Dual Gang Installation:** The connected incandescent/halogen load must not exceed 350W for each of the two iDevices® Dimmer Switches.
- **Triple Gang Installation:** The connected incandescent/halogen load must not exceed 300W for each of the three iDevices® Dimmer Switches.

 **RISK OF ELECTRIC SHOCK, SEVERE BURNS, AND FIRE:** Your safety is important to us. Electricity is dangerous and can cause personal injury and property damage if handled improperly. A working knowledge of electrical installation is required to install this product. If you are not comfortable working with electricity do not attempt to install the iDevices® Dimmer Switch and seek professional assistance from a qualified electrician.

BEFORE YOU START

- Read through this Installation Guide in its entirety before starting installation of your iDevices® Dimmer Switch or removal of your old switches. Incorrect installation can be dangerous and can damage your iDevices® Dimmer Switch or your home. The iDevices® Dimmer Switch is intended to be installed by a qualified electrician.
- Visit our YouTube channel for tips on installation and setup: www.YouTube.com/User/iDevicesInc
- Turn OFF the power to the circuit you are working on at your home's breaker or fuse panel.
- Wherever possible, install the iDevices® Dimmer Switch in a non-metallic gang box and use a non-metallic faceplate, as metal gang

boxes and faceplates can decrease the Wi-Fi® signal strength.

- Check that your mobile device is compatible with the iDevices® Dimmer Switch at iDevicesinc.com/Compatibility
- It is YOUR responsibility to be sure that products are installed in accordance with applicable building codes. Check with your local building office if you have questions.
- Download the free iDevices® Connected app.
- For 4-way configurations, visit: iDevicesinc.com/Support/DimmerSwitch/Setup

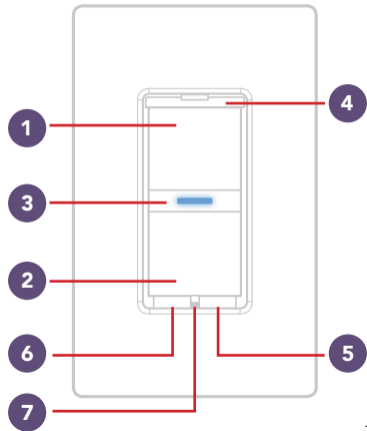
NEED HELP FINDING A PRO INSTALLER? Visit: iDevicesinc.com/FindAPro

GETTING TO KNOW THE iDEVICES® DIMMER SWITCH

- 1 Turn Light On/Increase Brightness.** Single tap to turn light on. Press and hold to increase brightness. Double tap to quickly increase light to maximum brightness. Also, used for 3-way and 4-way pairing.
- 2 Turn Light Off/Decrease Brightness.** Single tap to turn light off. Press and hold to decrease brightness. Double tap to quickly decrease light to minimum brightness level. Also, used for connecting to the Wi-Fi® network.
- 3 Status LED/Night Light.** Provides setup status and used as a night light during operation. Refer to LED color codes on page 42.
- 4 Pull Out Tab.** Refer to this when prompted to enter your HomeKit™ setup code during the setup on a iOS device. Also used to document the Dimmer

Switch as the Primary or Secondary in a 3-way or 4-way configuration.

- 5 Device Reboot.** Pressing this cycles power to the device.
- 6 Pairing Setup Button.** Used to wirelessly pair multiple Dimmer Switches for 3-way and 4-way configurations and for connecting to the Wi-Fi® network.
DEVICE RESET: Press and hold for 10 seconds until LED blinks red.
- 7 Air Gap Switch.** Pull air gap switch out to disconnect the power when replacing light bulbs.



INSTALLATION - SINGLE POLE

STEP 1

Turn OFF the power at the circuit breaker.

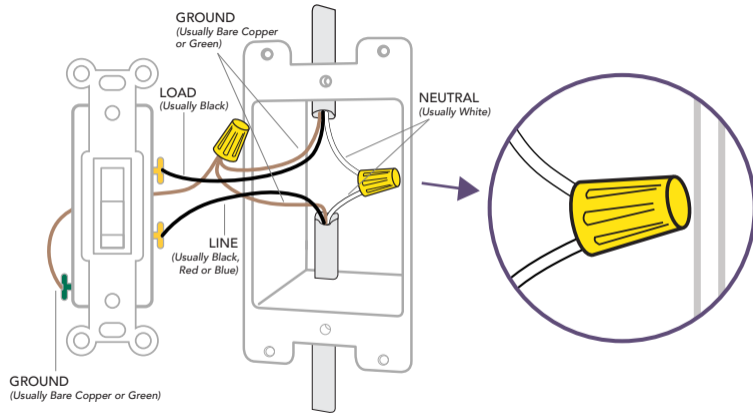
STEP 2

Remove the existing faceplate and switch from the gang box. Take a photo of the existing wiring for future reference.

STEP 3

Confirm the gang box contains a neutral wire (typically white). If there are no neutral wires present, you may need to run additional wires, please consult a qualified electrician.

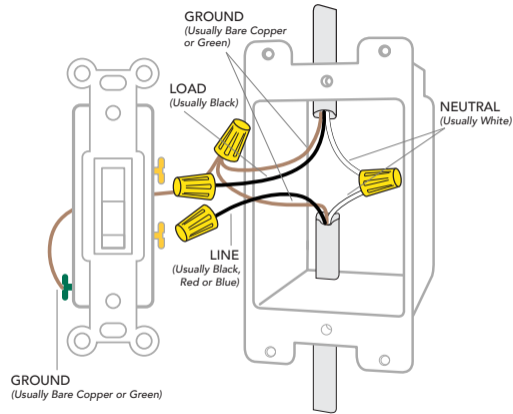
NOTE: Your home's wiring may differ; please consult a qualified electrician.



STEP 4

Remove both wires from the terminals of the existing switch and cap with the provided wire nuts. Note: If you have more than two wires connected to your switch (not including the bare copper or green-coated ground wire), please see the 3-way, 4-way installation instructions. It is not necessary to remove the ground wire.

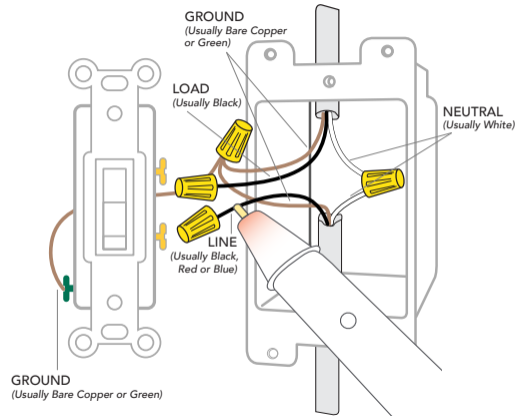
NOTE: Your home's wiring may differ; please consult a qualified electrician.



STEP 5

Turn the power back ON at the breaker. Using your voltage detector, identify which of the two wires you removed is energized. This is the "line" wire. The wire that is not energized is the "load" wire. Note these two wires for future reference.

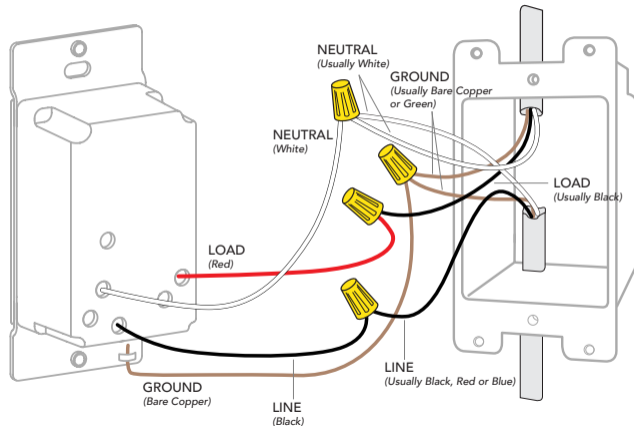
NOTE: Your home's wiring may differ; please consult a qualified electrician.



STEP 6

Turn the power back OFF at the breaker and install the iDevices® Dimmer Switch according to the diagram. Ensure all wire nuts are securely fastened.

NOTE: Your home's wiring may differ; please consult a qualified electrician.

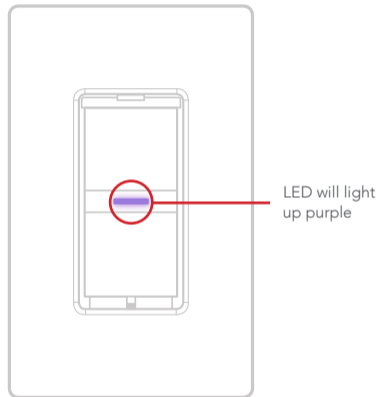


STEP 7

Install the Dimmer Switch into the gang box and install the faceplate.

STEP 8

Turn the power back ON at the circuit breaker and confirm that the LED on the Dimmer Switch lights up purple.



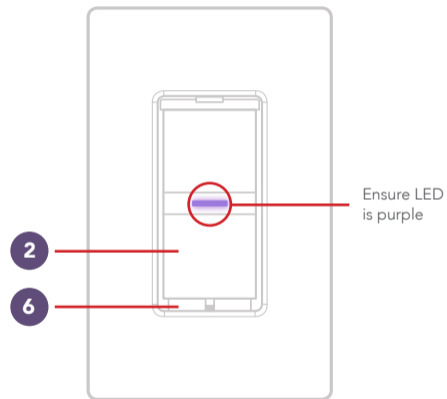
WIRELESS COMMUNICATION SETUP

STEP 1

Ensure power/breaker is turned back ON and the LED on the Dimmer Switch is solid purple.

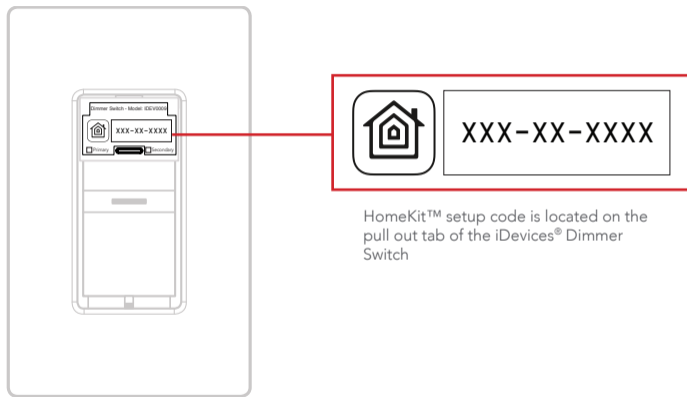
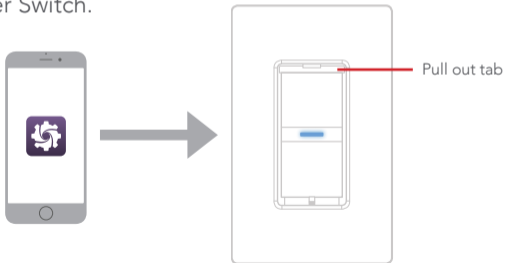
STEP 2

Press and hold "6" for 3 seconds and release when the LED rapidly flashes blue. Next tap "2" to begin the Wi-Fi® connection process.



STEP 3

Launch the iDevices® Connected app and you will be guided through the process of connecting your Dimmer Switch. For iOS devices, you will need the HomeKit™ setup code on the pull out tab on your Dimmer Switch.



INSTALLATION - 3-WAY

STEP 1

Turn OFF the power at the circuit breaker.

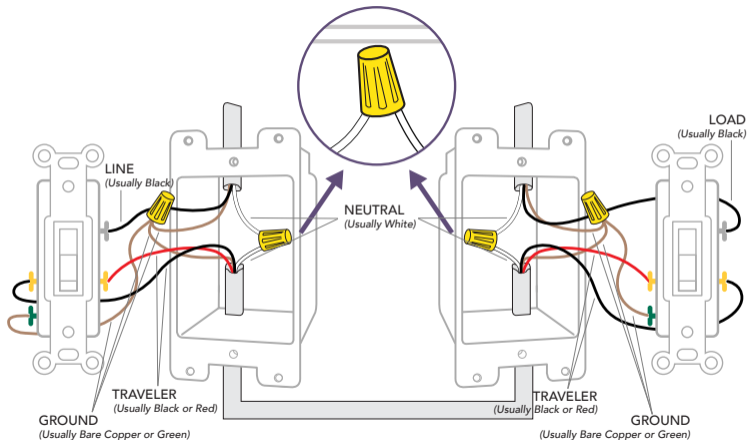
STEP 2

Remove the existing faceplates and switches from the gang boxes. Take a photo of the existing wiring for future reference.

STEP 3

Confirm that each gang box contains a neutral wire (typically white). If there are no neutral wires present, you may need to run additional wires, please consult a qualified electrician.

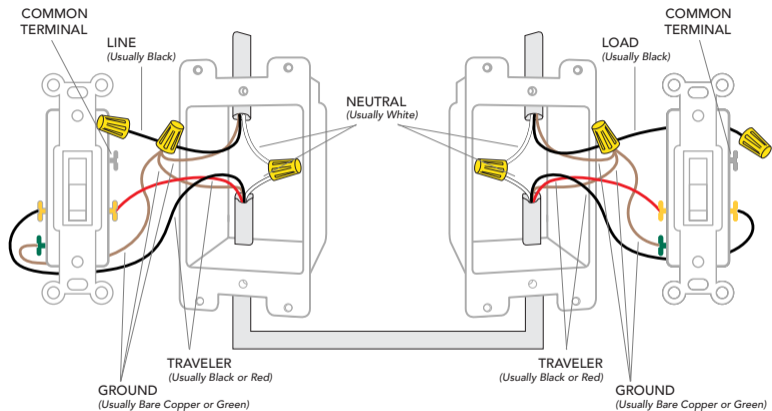
NOTE: Your home's wiring may differ; please consult a qualified electrician.



STEP 4

Remove the wires from the common terminal on both of the existing switches and cap with the provided wire nuts. Note: The common terminals usually have a screw that is either black or copper in color.

NOTE: Your home's wiring may differ; please consult a qualified electrician.

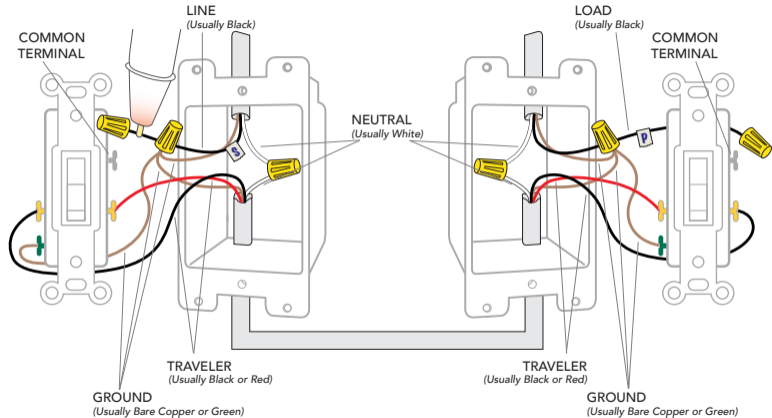


STEP 5

Turn the power back ON at the breaker. Using your voltage detector, identify which of the two wires you removed from the common terminal is energized. This is the "line" wire. Mark this wire as the Secondary (S) Switch Position. You will need to refer to this during the **Wireless Communication Setup**.

The wire you removed from the common terminal that is not energized is the "load" wire. Mark as the Primary (P) Switch Position. You will need to refer to this during the **Wireless Communication Setup**.

NOTE: Your home's wiring may differ; please consult a qualified electrician.



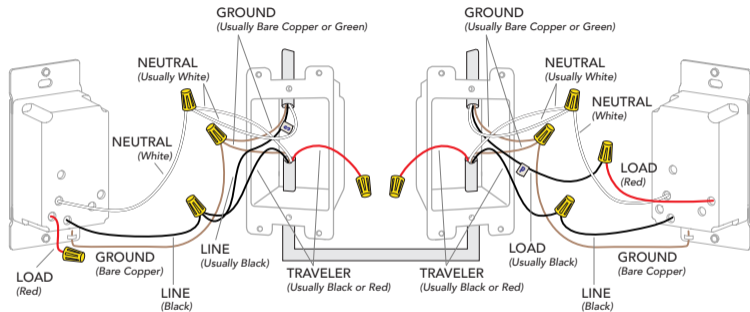
STEP 6

Install the iDevices® Dimmer Switches according to the diagram. Ensure the wire nuts are securely fastened.

NOTE: Your home's wiring may differ; please consult a qualified electrician.

SECONDARY SWITCH

PRIMARY SWITCH



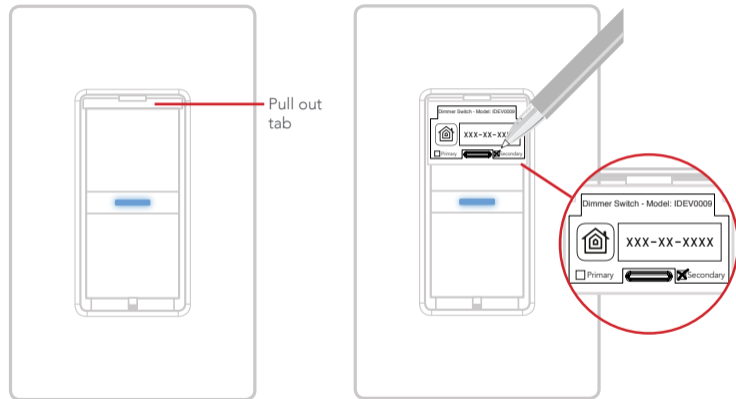
Ensure you install a wire nut on the red wire on the Secondary Switch as well as on both ends of the unused traveler wire (typically red wire)

STEP 7

Install the Dimmer Switches into the gang boxes and install the faceplates.

STEP 8

Extend the pull out tab on the front of the Dimmer Switch connected to the line wire (identified in step 5). Using a ballpoint pen, put an "X" in the box to indicate that this is the Secondary Switch.

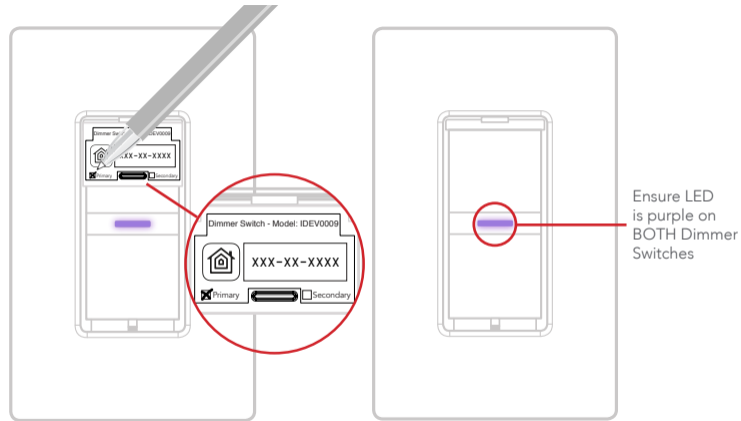


STEP 9

Extend the pull out tab on the front of the Dimmer Switch connected to the load wire (identified in step 5). Using a ballpoint pen, put an "X" in the box to indicate that this is the Primary Switch.

STEP 10

Turn the power back ON at the circuit breaker and confirm that the LED on both Dimmer Switches light up purple.



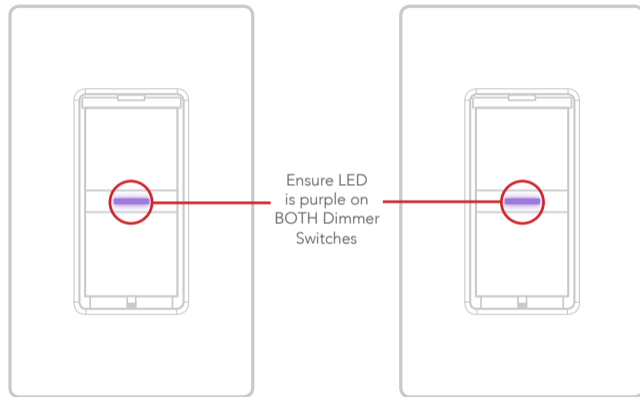
WIRELESS COMMUNICATION SETUP

The wireless setup is a two-step process for a 3-way Dimmer Switch configuration. First you will pair the Primary Switch to the Secondary Switch, then you will add the Primary Switch to your Wi-Fi® network.

PAIRING THE PRIMARY TO THE SECONDARY SWITCH

STEP 1

Ensure power/breaker is turned back ON and the LED on both Dimmer Switches are solid purple.

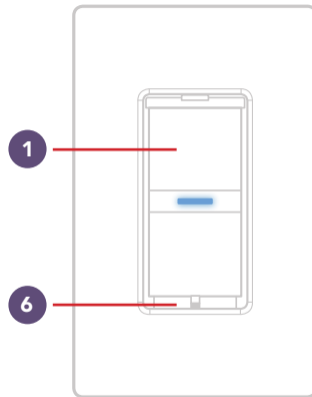


STEP 2

Locate the Primary Switch. Hold "6" until the LED rapidly flashes blue (3 seconds) then release. Next tap "1" to enter pairing mode. The LED will slowly flash blue.

Next locate the Secondary Switch. Repeat the steps above on the Secondary Switch by holding "6" until the LED rapidly flashes blue (3 seconds) then release. Next tap "1" to begin the pairing mode. The LED will flash blue slowly.

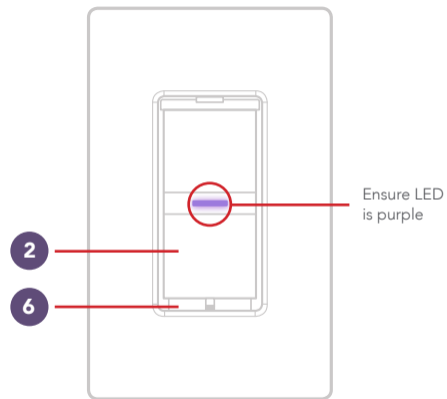
The Secondary Dimmer Switch will search and pair to the Primary Switch. The LED on each Dimmer Switch will rapidly blink green 5 times and each Dimmer Switch will beep 5 times to indicate the pairing process is complete.



CONNECTING TO THE WIRELESS NETWORK

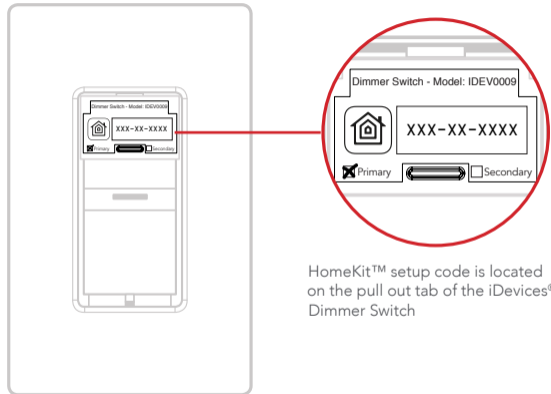
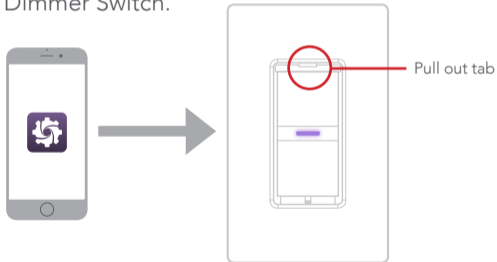
STEP 1

On the Primary Switch press and hold "6" for 3 seconds and release when the LED rapidly flashes blue. Next Tap "2" to begin the Wi-Fi® connection process.



STEP 2





Launch the iDevices® Connected app and you will be guided through the process of connecting your Dimmer Switches. For iOS devices, you will need the HomeKit™ setup code on the pull out tab of your Primary Dimmer Switch.






HomeKit™ setup code is located on the pull out tab of the iDevices® Dimmer Switch

REFERENCE INFORMATION

LED COLOR CODES

| LED State | Dimmer Description |
|------------------------------------------------------------------------------------------------------|--------------------------------------------------------------------------------------------------------------------------------------------------------------------------------------------------------------------------------------------------------------------------------------------------|
|  Blue Flash | Dimmer Switch is waiting for the handset to configure the accessory's Wi-Fi®. The LED flashes blue . |
|  Solid Blue | Dimmer Switch is waiting for the mobile device to initiate and complete pair set up. The LED is solid blue . Note: Pairing mode expires after 30 minutes; to reinitiate pairing mode, press the Pairing Button 6 down for 3 seconds and the LED will turn solid blue again. |
|  Slow Blue Flash | Pairing mode has expired and Dimmer Switch is waiting for the user to press the Pairing Button 6 down for about 3 seconds to re-enter pairing mode. The LED slowly flashes blue . |
|  Green Flash | When Dimmer Switch joins a Wi-Fi® network, (e.g., the link is up) the LED flashes green for 1 second. |

| LED State | Dimmer Description |
|-----------------------------------------------------------------------------------------------------|-------------------------------------------------------------------------------------------------------------------------------------------------------------------------------------------------------------------------------------------------------------------|
|  Orange Flash | When Dimmer Switch has lost the connection to the Wi-Fi® network, (e.g., the link is down) the LED slow flashes orange until the link is up. |
|  Red Flash | To initiate a device reset, which will clear all Wi-Fi® and pairing information, press the Pairing Button 6 down for 10 seconds until the LED rapidly flashes red . When the button is released the unit will reboot and re-enter the pairing mode. |
|  Purple Flash | When Dimmer Switch receives a request to identify itself, or a software update is being performed, it flashes purple . |

CUSTOMIZABLE MIN/MAX BRIGHTNESS LEVELS

The iDevices Dimmer Switch incorporates a convenient trimming feature that easily adjusts the minimum and maximum brightness levels, required for some LED and CFL bulbs (e.g. to prevent “bulb flicker” at low levels).

During setup, the app will automatically guide you through the process to make these adjustments. You can always make additional changes to the min/max levels in the app, through your Dimmer Switch’s product settings.

SUPPORT

If at any time you require assistance, please contact our Customer Experience Team.

☎ Call: 888.313.7019

✉ Email: Support@iDevicesinc.com

🖱 Visit: iDevicesinc.com/Support

TROUBLESHOOTING AND SUPPORT

A DEVICE RESET CAN RESOLVE MOST ISSUES. Press and hold

6 (Pairing Setup Button) for 10 seconds until LED blinks red.

REGULATORY INFORMATION

Product Information:

Manufacturer: iDevices® LLC

Model: IDEV0009

FCC: 2ABDJ-DIMMER

IC: 11569A-DIMMER

The iDevices® Dimmer Switch IDEV0009 is certified to comply with applicable FCC and IC rules and regulations governing RF and EMI emissions.

This device complies with Part 15 of the FCC Rules. Operation is subject to the following two conditions: (1) This device may not cause harmful interference, and (2) This device must accept any interference received, including interference that may cause undesired operation.

FCC Notice

This equipment has been tested and found to comply with the limits for a Class B digital device, pursuant to Part 15 of the FCC Rules. These limits are designed to provide reasonable protection against harmful interference in a residential installation.

This equipment generates, uses, and can radiate radio frequency energy and, if not installed and used in accordance with the instructions may cause harmful interference to radio communications. However, there is no guarantee that interference will not occur in a particular installation. If this equipment does cause harmful interference to radio or television reception, which can be determined by turning the equipment off and on, the user is encouraged to try to correct the interference by one or more of the following measures:

- Reorient or relocate the receiving antenna.
- Increase the separation between the equipment and receiver.
- Connect the equipment into an outlet on a circuit different from that to which the receiver is connected.
- Consult the dealer or an experienced radio/TV technician to help.
- Changes or modifications not expressly approved by the party responsible for compliance could void the user's authority to operate the equipment.

IC Notice

This Class B digital apparatus complies with Canadian ICES-003. Cet appareil numérique de la classe B est conforme à la norme NMB-003 du Canada. Le présent appareil est conforme aux CNR d'Industrie Canada applicables aux appareils radio exempts de licence. L'exploitation est autorisée aux deux conditions suivantes : (1) l'appareil ne doit pas produire de brouillage, et (2) l'utilisateur de l'appareil doit accepter tout

brouillage radioélectrique subi, même si le brouillage est susceptible d'en compromettre le fonctionnement.

This device complies with the Industry Canada license exempt RSS standard(s). Operation is subject to the following two conditions: (1) this device may not cause interference, and (2) this device must accept any interference, including interference that may cause undesired operation of the device.

CAUTION: To Reduce the Risk of Overheating And Possible Damage To Other Equipment, Do Not Install To Control A Receptacle, A Motor-Operated Appliance, A Fluorescent Lighting Fixture, Or A Transformer-Supplied Appliance.

ATTENTION: Afin De Reduire Le Risque De Surchauffe Et La Possibilite D'Endommagement A D'Autres Materiels, Ne Pas Installer Pour Commander Une Prise, Un Appareil A Moteur, Une Lampe Fluorescente Ou Un Appareil Alimente Par Un Transformateur.

References

Requires the iDevices® Connected app. For warranty information please visit iDevicesinc.com/Warranty.

Apple, the Apple logo, iPhone, and iPod touch are trademarks of Apple Inc., registered in the U.S. and other countries. App Store is a service mark of Apple Inc. HomeKit is a trademark of Apple Inc. Controlling HomeKit-enabled accessories away from home requires an Apple TV (3rd generation or later) with Apple TV software 7.0 or later and an iPhone, iPad, or iPod touch with iOS 8.1 or later. Amazon, Echo, Alexa and all related logos are

trademarks of Amazon.com, Inc. or its affiliates. Android is a trademark of Google Inc. Google Play and the Google Play logo are trademarks of Google Inc. The Bluetooth® word mark and logos are registered trademarks owned by the Bluetooth SIG, Inc. and any use of such marks by iDevices is under license. Other trademarks and trade names are those of their respective owners.



iDevicesinc.com