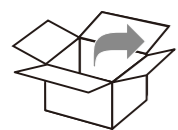
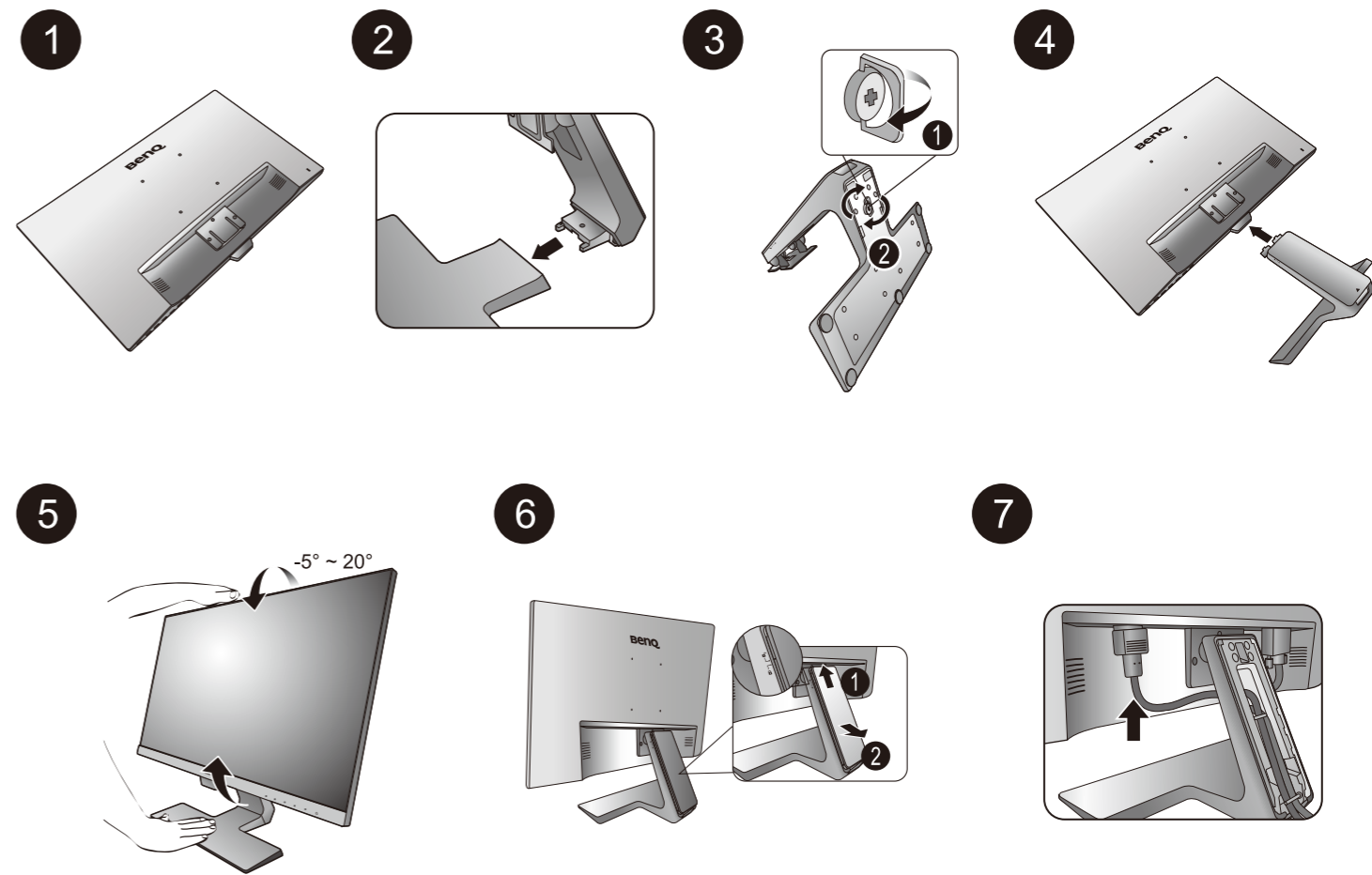




G80 Series LCD Monitor Quick Start Guide

DN: G80-Q-V3

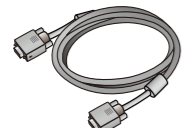
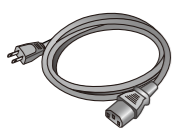
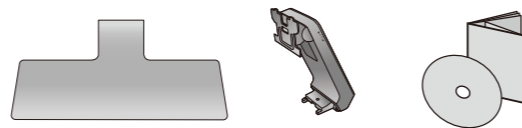
© 2018 BenQ Corporation. All rights reserved. Rights of modification reserved.



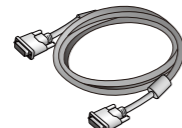
GW2280 / GW2280E
GW2283 / GW2283E
GW2480 / GW2480E
GW2780 / GW2780E



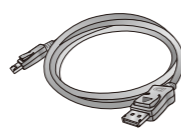
GL2580H / GL2580HE
GL2580HM / GL2580ME



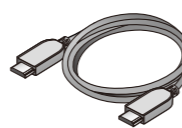
D-Sub
(Optional)



DVI
(Optional)



DP
(Optional)

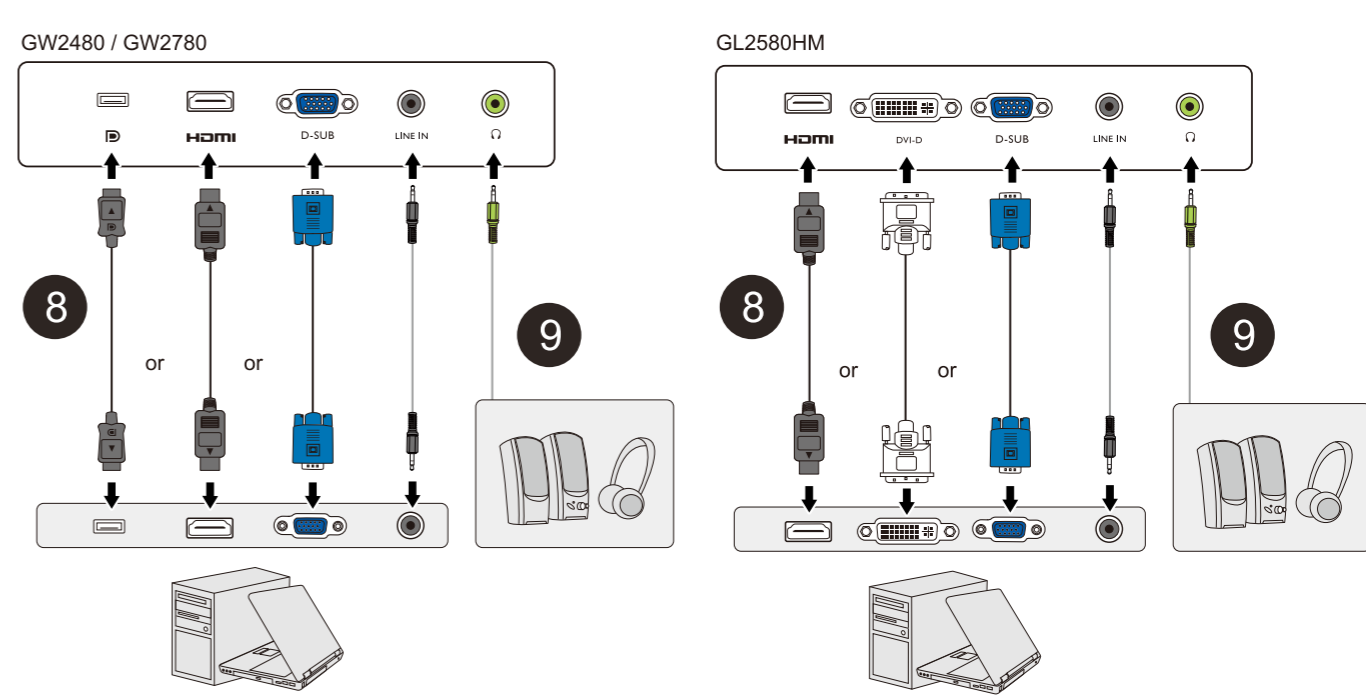
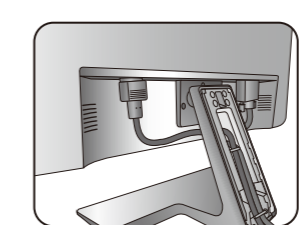


HDMI
(Optional)



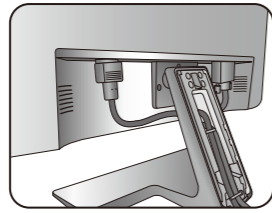
Audio
(Optional)

- 8 Video
- 9 Audio



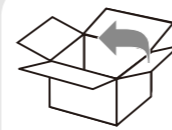
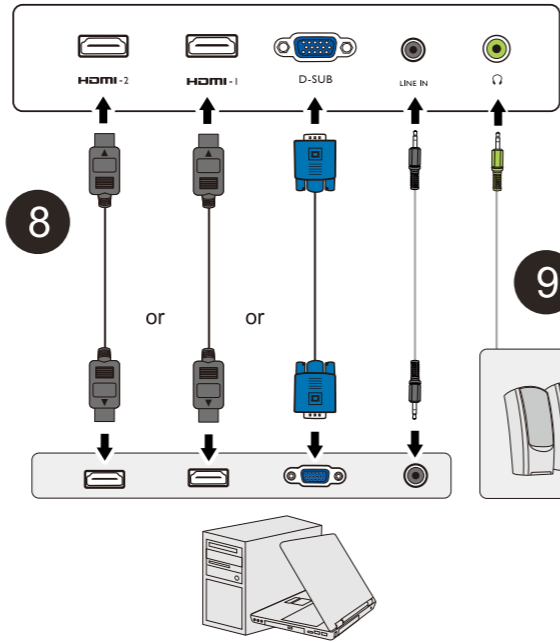
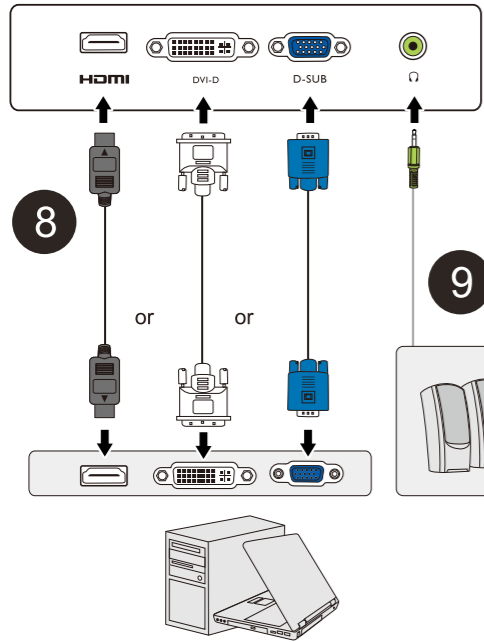
8 Video

9 Audio



GL2580H

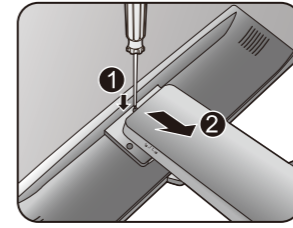
GW2280 / GW2283



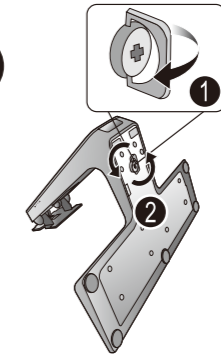
1



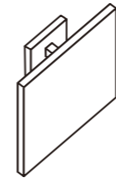
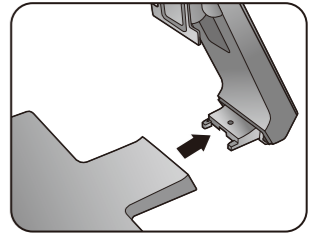
2



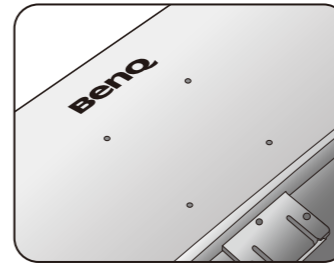
3



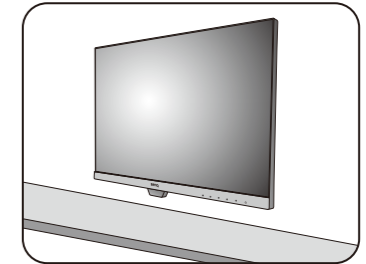
4



1

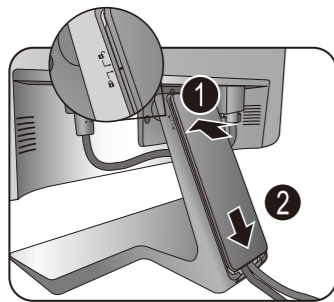


2

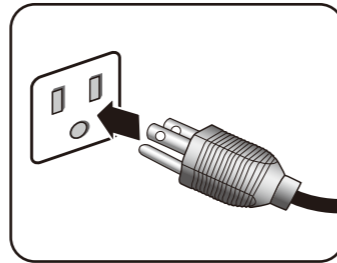


M4 x 10 mm

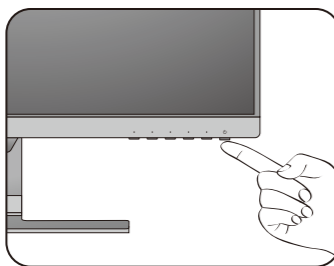
10



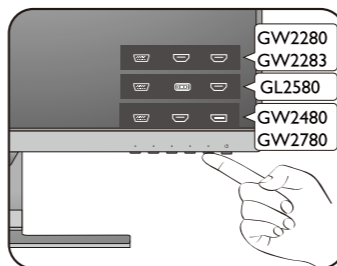
11



12



13



GW2280
 GW2283
 GL2580
 GW2480
 GW2780



www.BenQ.com