

ELECTRICAL SAFETY WARNINGS

**!** WARNING! When using mains powered tools, basic safety precautions should always be followed to reduce the risk of fire, electric shock, personal injury and material damage.

Before operating the unit, carefully read the entire manual and be certain you know how to switch the unit off in case of an emergency. Be sure to save these instructions and any other documents supplied with this unit for future reference.

Note: AOTE-PITT cordless tools are interchangeable for use in the United States and Canada.  
Note: The power outlet used for the power tools/charger must be protected by a 30mA ground fault circuit interrupter or earth leakage circuit breaker. If the supply cord is damaged, it must be replaced by an electrician or a power tool repairer in order to avoid a hazard.  
Note: Double insulation does not take the place of normal safety precautions when operating this tool. The insulation system is added to

GENERAL POWER TOOL SAFETY WARNINGS

**!** WARNING! Read all safety warnings and all instructions. Failure to follow the warnings and instructions may result in electric shock, fire and/or serious injury.

- Save all warnings and instructions for future reference. The term "power tool" in the warnings refers to your mains operated (corded) power tool or battery operated (cordless) power tool.
- Work area safety
- Keep work area clean and well lit. Cluttered or dark areas invite accidents.
  - Do not operate power tools in explosive atmosphere, such as in the presence of flammable liquids, gases or dust. Power tools create sparks which may ignite the dust or fumes.
  - Keep children and bystanders at a safe distance while operating a power tool. Getting distracted while using the tool may lead to injury for the operator or bystanders if not exercising proper safety.
- Electrical safety
- Power tool plugs must match the outlet. Never modify the plug in any way. Do not use any adapter plugs with earthed (grounded) power tools. Unmodified plugs and matching outlets will reduce the risk of electric shock.
  - Avoid bodily contact with earthed or grounded surfaces, such as pipes, radiators, ranges and refrigerators. There is an increased risk of electric shock if your body is earthed or grounded.
  - Do not expose power tools to rain or wet conditions. Water entering a power tool will increase the risk of electric shock.
  - Do not abuse the cord. Never use the cord for carrying, pulling or unplugging the power tool. Keep cord away from heat, oil, sharp edges or moving parts. Damaged or entangled cords increase the risk of electric shock.
  - When operating a power tool outdoors, use an extension cord suitable for outdoor use. Use of a cord suitable for outdoor use reduces the risk of electric shock.
  - If operating a power tool in a damp location is unavoidable, use a ground fault circuit interrupter (GFCI) protected supply with a rated leakage current of 30 mA or less. Use of a GFCI reduces the risk of electric shock.
- Personal safety
- Always be sure to pay close attention to what you are doing when operating a power tool. Do not use a power tool when you are tired or under the influence of drugs, alcohol or medication. A moment of inattention while operating power tools may result in serious personal injury.
  - Use personal protective equipment. Always wear eye protection. Under the appropriate condition, protective equipment such as a dust mask, non-skid safety shoes, hard hat, or hearing protection can reduce personal injuries.
  - Prevent unintentional starting. Make sure the switch is in the off-position before picking up or carrying the tool or connecting the unit to a power source/battery pack. Carrying power tools with your finger on the switch or energizing power tools that have the switch on may lead to accidents.
  - Remove any adjusting key or wrench before turning the power tool on. A wrench or a key left attached to a rotating part of the power tool may result in personal injury.
  - Do not over reach. Keep proper footing and balance at all times. This enables better control of the power tool in unexpected situations.
  - Dress properly. Do not wear loose clothing or jewelry. Keep your hair, clothing and gloves away from moving parts. Loose clothes, jewelry or long hair, can get caught in moving parts resulting in serious injury.
  - If devices are provided for the connection of dust extraction and collection facilities, ensure these are connected and properly used.

BATTERY AND CHARGER SAFETY WARNINGS

**!** WARNING! This manual contains important safety and operating instructions for your battery and charger.

- Before using the charger, read all instructions and cautionary markings on the charger, battery and the product using the battery.
- This charger is not intended for any uses other than charging rechargeable batteries. Any other use may result in risk of fire, electric shock or electrocution.
  - Since battery tools do not have to be plugged into an electric outlet, they are always in an operational condition. Be aware of possible hazards when not using the battery tool or when changing accessories. Following this rule will reduce the risk of electric shock, fire and serious personal injury.
  - Do not place battery tools or batteries near fire or heat. This will reduce the risk of explosion and possibly injury.
  - Do not crush, drop or damage battery. Do not use a battery or charger that has been dropped or has received a sharp blow. A damaged battery is subject to explosion. Properly dispose of a dropped or damaged battery immediately.
  - Do not avoid damage to the electric plug and cord when disconnecting the charger, be sure to pull by the plug and not the cord. Make sure the cord is placed where it will not be stepped on, tripped over, or otherwise subjected to damage or stress.
  - To reduce risk of electric shock, unplug the charger from the outlet before attempting any cleaning. Removing the battery will not reduce this risk.
  - A battery can explode if set near a source of ignition, such as a pilot light. To reduce the risk of serious personal injury, never use any cordless product near an open flame. If a battery explodes, it can propel debris and hazardous chemicals. If exposed to debris or chemicals, use water immediately to flush away particles/residue.
  - Do not charge battery tool in a damp or wet location. Do not use, store or charge battery or products in locations where the temperature is less than 50°F or more than 100°F.
  - Under extreme usage or temperature conditions, battery leakage may occur. If liquid comes in contact with your skin, wash immediately with soap and water. If liquid gets into your eyes, flush them with clean water for at least 10 minutes, then seek immediate medical attention. Following this rule will reduce the risk of serious personal injury.
  - Never attempt to open the battery or charger for any reason. If the plastic housing of the battery pack or charger breaks or cracks, immediately discontinue use and do not recharge.
  - The battery is not fully charged out of the carton. First read the safety instructions and then follow the charging notes and procedures.
  - Save these instructions. Refer to them frequently and use them to educate others who may use this tool. If you loan this tool to someone, be sure they are familiar with these instructions too.

DESCRIPTION OF SYMBOLS

V	Volts	Hz	Hertz
ac/~	Alternating current	W	Watts
dc/—	Direct current	Ah	Amp hour
mA	Milliamperes	Nm	Newton Meters
n	No load speed	/min	Revolutions or reciprocation per minute
	Warning		Read instruction manual
	Double insulated		Indoor use only
	Thermal cut-out protection		Polarity

GENERAL POWER TOOL SAFETY WARNINGS (CONT.)

- Power tool use and care
- Do not force the power tool. Use the correct power tool for your application. The correct power tool will do a better and safer job when used for its designed purpose.
  - Do not use the power tool if the on/off switch is malfunctioning. Any power tool that cannot be controlled with the switch is dangerous and must be repaired.
  - Disconnect the plug from the power source and/or the battery pack from the power tool before making any adjustments, changing accessories, or storing power tools. This helps reduce the risk of starting the power tool accidentally.
  - Store idle power tools out of the reach of children. Do not allow persons unfamiliar with the power tool to operate it without first reading these instructions. Power tools are dangerous in the hands of untrained users.
  - Properly maintain power tools. Check for misalignment or binding of moving parts, breakage of parts and any other condition that may affect the power tool's operation. If damaged, have the power tool repaired before use. Many accidents are caused by poorly maintained power tools.
  - Keep cutting tools sharp and clean. Properly maintained cutting tools with sharp cutting edges are less likely to bind and are easier to control.
  - Use the power tool, accessories, and tool bits, etc. by following these instructions, taking into account the working conditions and the work to be performed. Use of the power tool for operations different from those intended could create a hazardous situation.
- Service
- Have your power tool serviced by a qualified repair person using only identical replacement parts. This will ensure that the power tool is properly and safely maintained.
  - If the supply cord is damaged, it must be replaced by the manufacturer, its service agent or similarly qualified persons to prevent any potential hazard.

ROTARY TOOL SAFETY WARNINGS

- This appliance should only be used by able-bodied individuals. Younger persons should only use the tool when supervised by a re person who can ensure the tool is being used safely. Young children should not be allowed to use the tool - it is not a toy!
- !** WARNING! Read all safety warnings and instructions listed below. Failure to follow the warnings and instructions may result in serious injury.
- Wear ear protectors when drilling. Exposure to noise can cause hearing loss.
  - Use auxiliary handle(s), if supplied with the tool. Loss of control can cause personal injury.
  - Hold power tool by insulated gripping surfaces, when performing an operation where the cutting accessory may contact hidden wiring or its own cord. Cutting accessory contacting a "live" wire may make exposed metal parts of the power tool "live" and could give the o electric shock. Before drilling into walls, ceilings etc. ensure that there are no concealed power cables or pipes in the cavity.

**!** WARNING! Some dust created by power sanding, sawing, grinding, drilling and other construction activities contain chemicals known to cause cancer, birth defects or other reproductive harm. Some examples of these chemicals are:

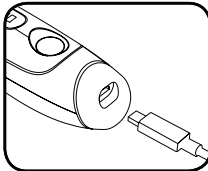
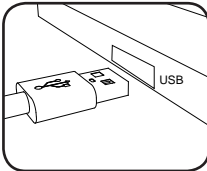
- Lead from lead-based paints.
- Crystalline silica from bricks and cement and other masonry products.
- Arsenic and chromium from chemically treated timber.

Your risk from exposure to these chemicals varies, depending on how often you do this type of work. To reduce your exposure to these chemicals: work in a well ventilated area and work with approved safety equipment, such as dust masks that are specially design out microscopic particles.

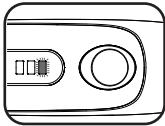
SET-UP AND PREPARATION

CHARGING

Charge this rotary tool through the USB cable directly from the DC Power supplies such as power bank or other power devices etc.



STATUS	LED LIGHT
Charging	BLUE
Fully Charged	GREEN



- Charger will automatically stop charging the battery when charging is completed.
- A battery that has been unused for a while or never been charged must be charged before reuse or first use.
- Do not charge a battery for a second time in close succession.
- There is a danger of overcharging the battery pack.
- The rotary tool can not be used during the charging process.
- The charger was designed to fast charge the battery only when the battery temperature is between 32°F and 113°F.

SWITCHING ON AND OFF / SETTING SPEED

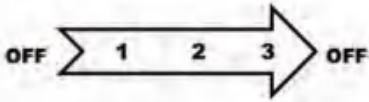
Switch On / Off

Simple to press the power switch button to turn on the tool.

Press switch hold for 2S to turn off the tool on any speed setting.

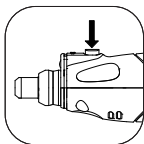
Speed Adjustment

Press the power switch/speed adjustment button once to change speed when the tool is power on.

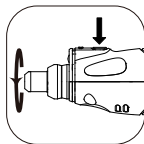


## ATTACHING / REMOVING ACCESSORIES

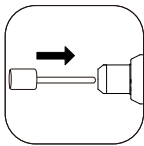
1 Press and hold the spindle lock button.



2 Unscrew the collet nut.



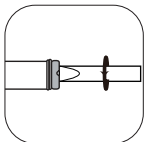
3 Insert shank of accessory into the collet.



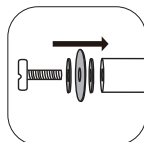
(The shank of all the accessories in this kit is 1/8" .)

### Locating A Cut-off Wheel/Sandpaper

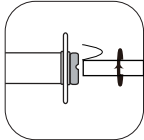
1 Remove the screw from the end of the mandrel with a tool.



2 Fit the fibre flange on either side of the accessory, then insert the screw.



3 Tighten the screw with a tool.



**NOTE:** DO NOT over tighten the screw as it could result in damage to the cutting disc.

# AOTE-PITT

ALL THE POWER YOU NEED

## 4V LITHIUM-ION ROTARY TOOL KIT

MODEL# CRTK-4

POWER SWITCH/SPEED  
ADJUSTMENT BUTTON

CHARGING PORT

SPEED LED INDICATORS

1 = 5,000 rpm  
2 = 12,000 rpm  
3 = 18,000 rpm

### ACCESSORIES INCLUDED

5 x Stone Grinding Bits  
6 x Diamond Bits  
2 x Polishing Wheels  
2 x HSS Cutters  
2 x Rubber Polishing Bits  
1 x Nylon Brush  
30 x Sanding Papers  
1 x Mandrel for Sanding Paper  
12 x Sanding Bands  
1 x Sanding Drum  
6 x Felt Wheels  
1 x Mandrel for Felt Wheels  
1 x HSS Drill Bit  
2 x Lettering/Number Templates  
1 x Accessory Storage Case  
1 x USB Charging Cable

SPINDLE LOCK  
for changing of accessory.

LED WORKLIGHT

COLLET

### SPECIFICATIONS

**WORKING VOLT:** 4V DC Max.  
**NO LOAD SPEED:** 5,000/12,000/18,000rpm  
**BATTERY:** 1500mAh Li-ion, Built-in  
**MAX COLLET CAPACITY:** 1/8"  
**CHARGER:** 5V USB, 2 -3 hours  
**WEIGHT:** 0.30 lbs.

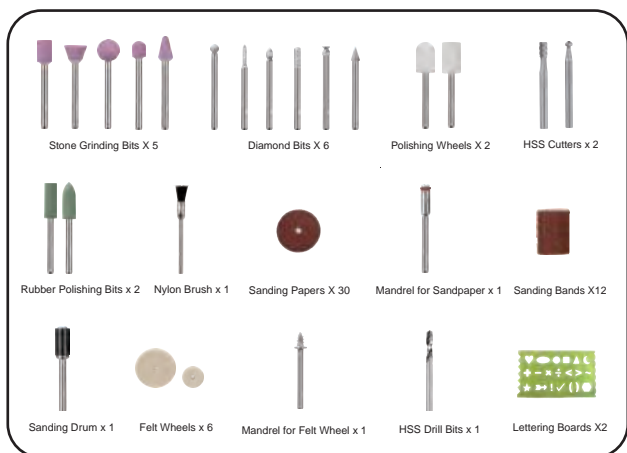
### ATTENTION!

Only suitable for delicate & light DIY small projects.  
Not recommended for heavy-duty work.

## ONE-YEAR WARRANTY

CUSTOMER SUPPORT  
info@aotepitt.com

## ACCESSORIES



#### Stone Grinding Bit

Suitable for various kinds of grinding and sharpening applications. Available in a wide range of shapes and sizes (i.e., round, pointed, flat, etc.).

#### Diamond Bit

Made for intricate work on ceramic woodcarvings, jewelry and scrimshaw.

#### Polishing Wheel

Used for bringing metal surfaces to a smooth finish. Use with polishing compound to bring a high shine to the finish.

#### HSS Cutter

Ideal for shaping, hollowing, grooving, slotting on woods, plastics and other soft materials.

#### Rubber Polishing Bits

Ideal for cleaning and defining grooves, removes small burrs and scratch marks left by grinding and sanding.

#### Nylon Brush

Use for light deburring, cleaning and polishing of silverware, jewelry and other precious metals.

#### Sanding Paper

For sanding on the surfaces.

#### Mandrel

Fitting with sanding papers and cut-off wheels.

#### Sanding Band

Shapes wood, smooths fiberglass, sand inside curves and other difficult to reach areas.

#### Sanding Drum

Fitting with sanding bands.

#### Felt Wheel

Idea for general polishing of most ferrous metals, stones, glass and ceramics.

#### Mandrel for Felt Wheel

Fitting with felt wheels.

#### HSS Drill Bits

Ideal for drilling on wood, plastics and soft metals.

#### Lettering/Number Template

Helps etch words and numbers.

## MAINTENANCE

- When not in use, the screwdriver should be stored in a dry, frost free location, keep out of children's reach.
- Keep ventilation slots of the screwdriver clean at all times and prevent any from entering.
- If the housing of the screwdriver requires cleaning, do not use solvents but cloth only.
- Blow out the ventilation slots with compressed air periodically.

Note: AOTE-PITT Tools will not be responsible for any damage or injuries caused by repair of the screwdriver by an unauthorized person or by misharing.

## WARRANTY

YOUR PRODUCT IS GUARANTEED FOR A MAXIMUM PERIOD OF 12 MONTHS FROM THE ORIGINAL DATE OF PURCHASE AND IS INTEND FOR DIY (Do It Yourself) ONLY!

Warranty excludes consumable parts, (For example, bearings and O-rings, etc.)

### 30-DAY MONEY BACK GUARANTY

Within the first 30 days of purchase, you are allowed to return your product for a full refund.

### 30 DAYS TO 90 DAYS (3 MONTHS)

A defective unit will be replaced with a new one in accordance with the terms of this warranty, due to manufacturing fault.

### 90 DAYS TO 12 MONTHS

Up to 24 months after purchase, we will provide speedy and effective online service.



### WARNING!

The following actions will result in the warranty becoming void.

- If the tool has been operated on a supply voltage other than that specified on the tool.
- If the tool shows signs of damage or defects caused by or resulting from abuse, accidents or alterations.
- Failure to perform maintenance as set out within the user manual.
- If the product is disassembled or tampered with in any way.
- Professional, industrial or high frequency use.

ANY QUESTIONS, PLEASE CONTACT OUR CUSTOMER SUPPORT TEAM:

info@aotepitt.com

TO ENSURE THE QUICKEST RESPONSE POSSIBLE, PLEASE HAVE THE MODEL NUMBER AND PURCHASE ORDER NUMBER AVAILABLE SO OUR CUSTOMER SERVICE REPRESENTATIVE CAN ANSWER ANY QUESTIONS YOU MAY HAVE RELATING TO THE WARRANTY POLICY OR PROCEDURE.

MADE IN CHINA

