

User Manual of Product 1:

Ninja Professional Plus Food Processor 850-Watts With Auto-iQ Preset Programs Chop Puree Dough Slice Shred With a 9-Cup Capacity and a Silver Stainless Finish (BN600C) - Canadian Version

User Manual of Product 2:

Ninja BL450C, Nutri Pro Personal Blender For Juices, Shakes & Smoothies, 18 and 24 Oz cups, Black/Silver, 900W (Canadian Version)

NINJA®

BN600 Series

OWNER'S GUIDE

**PROFESSIONAL FOOD
PROCESSOR
WITH AUTO-IQ®**



THANK YOU

for purchasing the Ninja® Professional Food Processor with Auto-iQ®



REGISTER YOUR PURCHASE

 registeryourninja.com

 Scan QR code using mobile device

RECORD THIS INFORMATION

Model Number: _____

Serial Number: _____

Date of Purchase: _____
(Keep receipt)

Store of Purchase: _____

TECHNICAL SPECIFICATIONS

Voltage: 120V~, 60Hz

Power: 850 Watts

**PLEASE READ CAREFULLY AND
KEEP FOR FUTURE REFERENCE.**

CONTENTS

Important Safety Instructions	4
Parts	7
Before First Use	7
Features	8
Auto-iQ® Programs for the Precision Processor® Bowl	8
Manual Programs	8
Using the Blade Assemblies	9
Using the Reversible Slicing/Shredding Disc	11
Care & Maintenance	13
Cleaning	13
Storing	13
Resetting the Motor Thermostat.....	13
Ordering Replacement Parts	13
Troubleshooting Guide	14
Warranty	15

TIP: You can find the model and serial numbers on the QR code label on the back of the unit by the power cord.

IMPORTANT SAFETY INSTRUCTIONS

PLEASE READ CAREFULLY BEFORE USE • FOR HOUSEHOLD USE ONLY

⚠ WARNING

To reduce the risk of injury, fire, electrical shock or property damage, basic safety precautions must always be followed, including the following numbered warnings and subsequent instructions. Do not use appliance for other than intended use.

- 1 Read all instructions prior to using the appliance and its accessories.
- 2 Carefully observe and follow all warnings and instructions. This unit contains electrical connections and moving parts that potentially present risk to the user.
- 3 Take your time and exercise care during unpacking and appliance setup. This appliance contains sharp, loose blades that can cause injury if mishandled.
- 4 Take inventory of all contents to ensure you have all parts needed to properly and safely operate your appliance.
- 5 Blades are sharp. Handle carefully.
- 6 This product is provided with a Chopping Blade Assembly. **ALWAYS** exercise care when handling blade assembly. The blade assembly is sharp and is **NOT** locked in place in the container. The blade assembly is designed to be removable to facilitate cleaning and replacement if needed. **ONLY** grasp the blade assembly by the top of the shaft. Failure to use care when handling the blade assembly will result in a risk of laceration.
- 7 Turn the appliance **OFF**, then unplug the appliance from the outlet when not in use, before assembling or disassembling parts, and before cleaning. To unplug, grasp the plug by the body and pull from the outlet. **NEVER** unplug by grasping and pulling the flexible cord.
- 8 Before use, wash all parts that may contact food. Follow washing instructions covered in this instruction manual.
- 9 Before each use, inspect blade assemblies for damage. If a blade is bent or damage is suspected, contact SharkNinja to arrange for replacement.
- 10 **DO NOT** use this appliance outdoors. It is designed for indoor household use only.
- 11 This appliance has a polarized plug (one prong is wider than the other). To reduce the risk of electric shock, this plug will fit in a polarized outlet only one way. If the plug does not fit fully in the outlet, reverse the plug. If it still does not fit, contact a qualified electrician. **DO NOT** modify the plug in any way.
- 12 **DO NOT** operate any appliance with a damaged cord or plug, or after the appliance malfunctions or is dropped or damaged in any manner. This appliance has no user-serviceable parts. If damaged, contact SharkNinja for servicing.
- 13 This appliance has important markings on the plug blade. The entire supply cord is not suitable for replacement. If damaged, please contact SharkNinja for service.
- 14 Extension cords should **NOT** be used with this appliance.
- 15 To protect against the risk of electric shock, **DO NOT** submerge the appliance or allow the power cord to contact any form of liquid.
- 16 **DO NOT** allow the cord to hang over the edges of tables or counters. The cord may become snagged and pull the appliance off the work surface.
- 17 **DO NOT** allow the unit or the cord to contact hot surfaces, including stoves and other heating appliances.
- 18 **ALWAYS** use the appliance on a dry and level surface.
- 19 **DO NOT** allow children to operate this appliance or use as a toy. Close supervision is necessary when any appliance is used near children.
- 20 This appliance is **NOT** intended to be used by people with reduced physical, sensory, or mental capabilities, or lack of experience and knowledge, unless they have been given supervision or instruction concerning use of the appliance by a person responsible for their safety.
- 21 **ONLY** use attachments and accessories that are provided with the product or are recommended by SharkNinja. The use of attachments, including canning jars, not recommended or sold by SharkNinja may cause fire, electric shock, or injury.
- 22 **NEVER** place a blade assembly on the motor base without it first being attached to its corresponding container (bowl) and lid.
- 23 Keep hands, hair, and clothing out of the container when loading and operating.
- 24 During operation and handling of the appliance, avoid contact with moving parts.
- 25 **DO NOT** fill container past the 9-Cup line.
- 26 **DO NOT** operate the appliance with an empty container.
- 27 **DO NOT** microwave any containers or accessories provided with the appliance.
- 28 **NEVER** leave the appliance unattended while in use.
- 29 **DO NOT** blend hot liquids. Doing so may result in pressure buildup and steam exposure that can pose a risk of the user being burned.
- 30 **DO NOT** process dry ingredients with the Chopping Blade Assembly.
- 31 To reduce the risk of injury, never place cutting blade or discs on base without first putting bowl properly in place.
- 32 **DO NOT** perform grinding operations with the Chopping Blade Assembly.
- 33 **NEVER** operate the appliance without lids and caps in place. **DO NOT** attempt to defeat the interlock mechanism. Ensure the container and lid are properly installed before operation.

SAVE THESE INSTRUCTIONS

IMPORTANT SAFETY INSTRUCTIONS

PLEASE READ CAREFULLY BEFORE USE • FOR HOUSEHOLD USE ONLY

⚠ WARNING

To reduce the risk of injury, fire, electrical shock or property damage, basic safety precautions must always be followed, including the following numbered warnings and subsequent instructions. Do not use appliance for other than intended use.

- 34** Before operation, ensure all utensils are removed from containers. Failure to remove utensils can cause containers to shatter and potentially result in personal injury and property damage.
- 35** Keep hands and utensils out of containers while chopping to reduce the risk of severe personal injury or damage to the blender/food chopper. A scraper may be used **ONLY** when the processor is not running. When using the processor, always use food pusher to add food. **NEVER** add food by hand.
- 36** **DO NOT** attempt to remove the container or lid from the motor base while the blade assembly is still spinning. Allow the appliance to come to a complete stop before removing lids and containers.
- 37** If the appliance overheats, a thermal switch will activate and temporarily disable the motor. To reset, unplug the appliance and allow it to cool for approximately 15 minutes before using again.
- 38** **DO NOT** expose the containers and accessories to extreme temperature changes. They may experience damage.
- 39** Upon completion of processing, ensure that the blade assembly is removed **BEFORE** emptying container's contents. Remove the blade assembly by carefully grasping the top of the shaft and lifting it from the container. Failure to remove the blade assembly before emptying the container results in a risk of laceration.
- 40** The maximum wattage rating for this appliance is based on the configuration of the Food Processor Bowl.
- 41** **DO NOT** submerge the motor base or control panel in water or other liquids. **DO NOT** spray motor base or control panel with any liquid.
- 42** **DO NOT** attempt to sharpen blades.
- 43** Turn off the appliance and unplug the motor base before cleaning.
- 44** **NEVER** feed food by hand. Always use food pusher.
- 45** To reduce the risk of injury from damage to the food processing bowl or separation of the lid, **DO NOT** load the bowl with ice cubes for crushing.

SAVE THESE INSTRUCTIONS

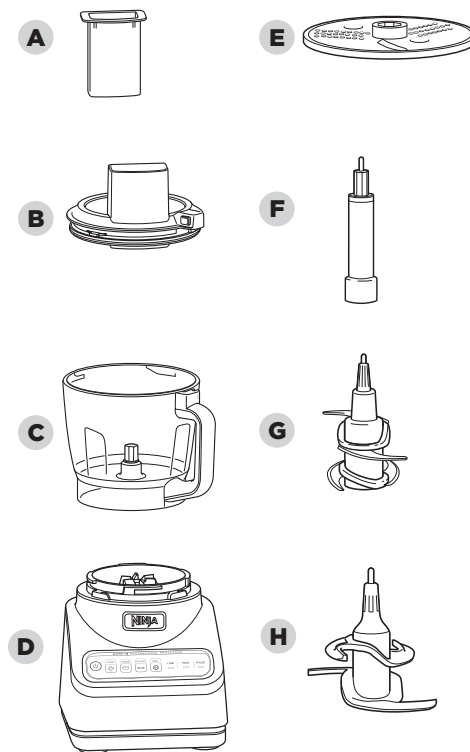
PARTS

NOTE: The top flap of your box shows the select accessories that are included with your model.

- A** Pusher for Feed Chute Lid
- B** Feed Chute Lid
- C** 9-Cup Precision Processor® Bowl
- D** Motor Base
(attached power cord not shown)
- E** Reversible Slicing/Shredding Disc
- F** Disc Spindle
- G** Chopping Blade Assembly
- H** Dough Blade Assembly

There are a variety of accessories that are compatible with this food processor series.

To purchase more accessories and find great recipes, visit ninjakitchen.com.



BEFORE FIRST USE

IMPORTANT: Review all warnings on pages 4–6 before proceeding.

NOTE: All attachments are BPA free and dishwasher safe. It is recommended that the bowl, lid, disc, and blade assemblies be placed on the top rack of the dishwasher. Exercise care when handling blade assemblies.

- 1** Remove all packaging materials from the appliance. Exercise care when unpacking blade assemblies. All blade assemblies are sharp.
- 2** The Chopping Blade Assembly is **NOT** locked in place in the bowl. Handle the Chopping Blade Assembly by grasping the top of the shaft.
- 3** Wash bowl, lid, disc, and blade assemblies in warm, soapy water using a dishwashing utensil with a handle to avoid direct contact with the blades. Exercise care when handling blade assemblies, as the blades are sharp.
- 4** Thoroughly rinse and air-dry all parts.

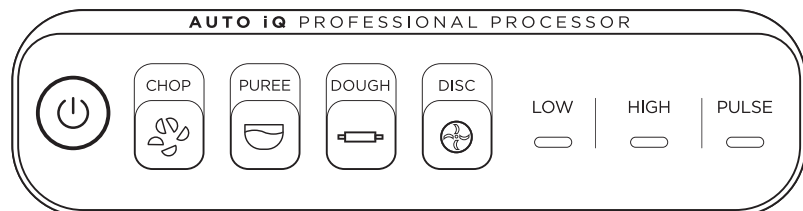
FEATURES

 Use the Power button to turn the unit on and off.

AUTO-IQ®

Intelligent preset programs combine unique processing and pausing patterns that do the work for you. Once an Auto-iQ program is selected, it will start immediately and automatically stop when processing is complete. To stop processing before the end of a program, press the currently active button again.

NOTE: Program run times vary from a few seconds up to a minute.



AUTO-IQ PROGRAMS

CHOP

Timed pulses and pauses give you consistent chopping results. Run program once for a large chop, twice for a small chop and three times if you prefer to mince.

PUREE (Not available on all models)

Create anything from silky-smooth sauces to the perfect hummus.

MANUAL PROGRAMS

LOW and HIGH

When selected, each of these speeds runs continuously for 60 seconds. They do not work in conjunction with any preset Auto-iQ programs.

IMPORTANT: DO NOT run the unit on HIGH if using the dough blade.

IMPORTANT: The unit is **NOT** intended to crush ice. Refer to the warnings on pages 4–6.

DOUGH

Ideal for creating delicious dough, from pie to pizza to cookie doughs.

NOTE: Use PULSE to add mix-ins, such as chocolate chips or raisins, after dough program has completed.

DISC

Slice or shred a variety of ingredients, from fresh vegetables to cheeses.

PULSE

Offers greater control of pulsing and processing. Operates only when PULSE is pressed. Use short presses for short pulses and long presses for long pulses.

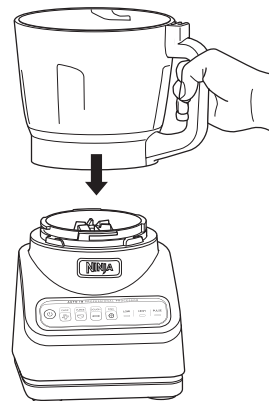
USING THE BLADE ASSEMBLIES

IMPORTANT: As a safety feature, if the blade assembly is not fully seated, you will not be able to install and lock the lid in position.

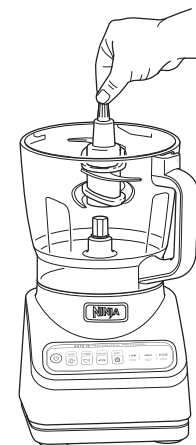
NOTE: DO NOT add ingredients before completing installation of the blade assembly.

NOTE: Please follow the same instructions to install the Dough Blade Assembly.

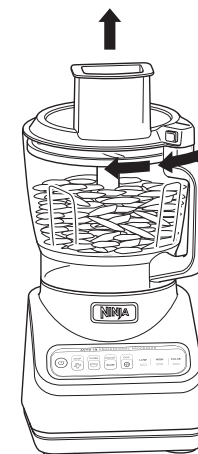
- 1 Place motor base on a clean, dry, level surface such as a countertop or table, then plug in the unit.



- 2 Lower the Precision Processor® Bowl onto the motor base and rotate clockwise until it clicks into place.

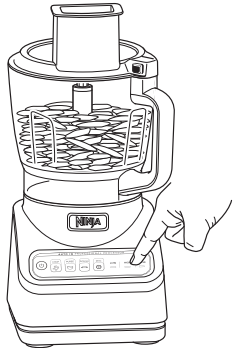


- 3 Exercising care, grasp the Chopping Blade Assembly by the top of the shaft and place it onto the drive gear inside the bowl. Note that the Chopping Blade Assembly will fit loosely on the drive gear.
- 4 Add ingredients to the bowl, making sure not to exceed the 9-Cup line.



- 5 Place the feed chute lid on the bowl and turn clockwise until you hear a click, indicating the lid is locked in place.

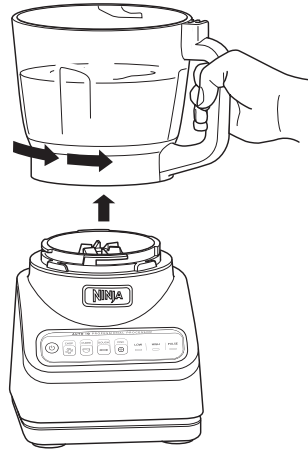
USING THE BLADE ASSEMBLIES - CON'T



- 6a** Press the Power button to turn it on. If using an Auto-IQ® program, select the program that best suits your recipe. The preset program will automatically stop the unit at the end of the program. To stop the unit at any time, press the currently active program again.
- 6b** If using a manual program, once the ingredients have reached your desired consistency, press the active button again, and wait for the unit to come to a complete stop.



- 7** When finished, press the button on the lid near the handle to unlock, then turn counterclockwise and lift up from the bowl. Always remove the Chopping Blade Assembly before emptying ingredients from the bowl by carefully grasping it by the top of the shaft and lifting it out of the bowl.



- 8** To remove the bowl from the motor base, turn the bowl counterclockwise and then lift it up.
- 9** Press the Power button to turn the unit off, then unplug the unit. Refer to the Care & Maintenance section for cleaning and storage instructions.

USING THE REVERSIBLE SLICING/SHREDDING DISC

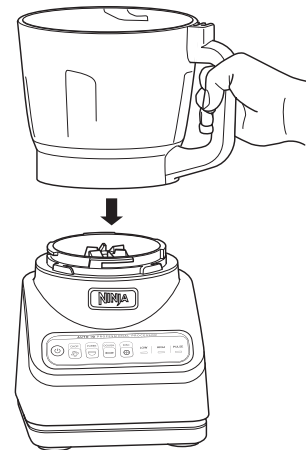
IMPORTANT: Review all warnings on pages 4-6 before proceeding.

IMPORTANT: Use only the DISC program or LOW setting when using the Slicing/Shredding Disc.

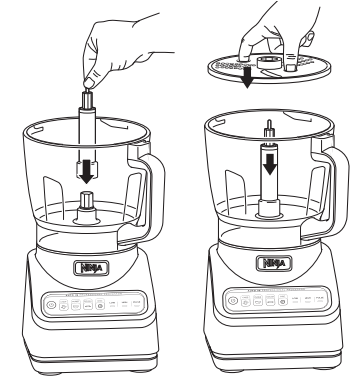
NOTE: The Slicing/Shredding Disc is reversible. Use the side labeled “Slicer” for slicing. Carefully flip the disc over to the side labeled “Shredder” for shredding.

NOTE: The feed chute lid features a pusher to guide food through the chute.

- 1** Place motor base on a clean, dry, level surface such as a countertop or table, then plug in the unit.



- 2** Lower the Precision Processor® Bowl onto the motor base and rotate clockwise until it clicks into place.



- 3** Place the disc spindle onto the drive gear inside the bowl. Then, use the finger holes to grasp the reversible slicing/shredding disc and place it over the spindle, with the side you would like to use facing up.



- 4** Place the feed chute lid on the bowl and turn clockwise until you hear a click, indicating the lid is locked in place.

USING THE REVERSIBLE SLICING/SHREDDING DISC - CONT.

NOTE: Before slicing or shredding, prep your ingredients. Refer to the Food Prep section in the Quick Start Guide for more information.



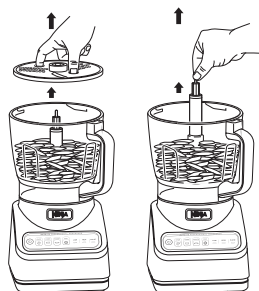
- 5 Press the Power button to turn it on, then select DISC or LOW. Add the prepped ingredients you want to slice or shred through the feed chute on the lid. Use the food pusher to help guide the ingredients through the feed chute.



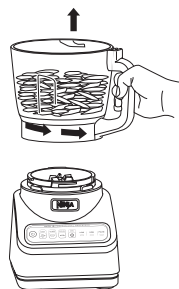
- 6 If using the Auto-IQ® program, DISC, the disc will automatically stop spinning at the end of the program. If using the manual program LOW, press the button again, and wait for the unit to come to a complete stop.



- 7 To remove the lid, press the button on the feed chute lid near the handle to unlock, then turn the lid counterclockwise. Lift the lid from the bowl.



- 8 Using the finger holes, carefully lift the disc out of the bowl. Then, grasp the spindle by the top of the shaft and lift it out of the bowl.



- 9 To remove the bowl from the motor base, turn the bowl counterclockwise and then lift it up.

- 10 Press the Power button to turn the unit off, then unplug the unit. Refer to the Care & Maintenance section for cleaning and storage instructions.

CARE & MAINTENANCE

CLEANING

Separate all parts. Wash bowl in warm, soapy water with a soft cloth.

• Hand-Washing

Wash bowl, lid, disc, and blade assemblies in warm, soapy water. When washing the blade assemblies, use a dishwashing utensil with a handle to avoid direct hand contact with blades.

Handle blade assemblies with care to avoid contact with sharp edges. Rinse and air-dry thoroughly.

• Dishwasher

All attachments are dishwasher safe. It is recommended that the bowl, lid, disc, and blade assemblies be placed on the top rack of the dishwasher **ONLY**. Ensure the blade assembly is removed from the bowl before placing in the dishwasher. Exercise care when handling blade assemblies.

• Motor Base

Turn off the unit and unplug the motor base before cleaning. Wipe motor base with a clean, damp cloth.

DO NOT use abrasive cloths, pads, or brushes to clean the base.

STORING

Wrap the power cord around the cord wrap on the back of the motor base. Store the unit upright and store all blade assemblies inside or attached to the bowl with the lid locked in place.

DO NOT stack items on top of the containers. Store any remaining attachments alongside the unit or in a cabinet where they will not be damaged or create a hazard.

RESETTING THE MOTOR THERMOSTAT

This unit features a unique safety system that prevents damage to the motor and drive system should you inadvertently overload the unit. If the unit is overloaded, the motor will be temporarily disabled. Should this occur, follow the reset procedure below.

- 1 Unplug the unit from the electrical outlet.
- 2 Allow the unit to cool for approximately 15 minutes.
- 3 Remove the bowl's lid and blade assembly. Empty the bowl and ensure no ingredients are jamming the blade assembly.

IMPORTANT: Ensure that maximum capacity is not exceeded. This is the most typical cause of appliance overload.

If your unit needs servicing, call Customer Service at 1-877-646-5288. So we may better assist you, please register your product online at registeryourninja.com and have the product on hand when you call.

ORDERING REPLACEMENT PARTS

To order additional parts and attachments, visit ninjaaccessories.com.

TROUBLESHOOTING GUIDE

⚠ WARNING: To reduce the risk of shock and unintended operation, turn power off and unplug unit before troubleshooting.

Motor base won't stick to counter or tabletop.

- Make sure surface and suction feet are wiped clean. Suction feet will only stick to smooth surfaces.
- Suction feet will not stick to some surfaces such as wood, tile, and non-polished finishes.
- **DO NOT** attempt to use unit when the motor base is stuck to a surface that is not secure (cutting board, platter, plates, etc.).

Unit is difficult to remove from counter for storage.

- Place your hands underneath both sides of the motor base and gently pull the unit up and toward you.

Food is not evenly chopped.

- For best results when chopping, cut pieces of ingredients in a uniform size and don't overfill the bowl.

Ingredients are unevenly sliced.

- For best results when using the Reversible Slicing/Shredding Disc, trim ingredients to a uniform size so they fit better through the feed chute. Do not cut ingredients smaller than the feed chute height.

Shark | NINJA

ONE (1) YEAR LIMITED WARRANTY

The One (1) Year Limited Warranty applies to purchases made from authorized retailers of **SharkNinja Operating LLC**. Warranty coverage applies to the original owner and to the original product only and is not transferable.

SharkNinja warrants that the unit shall be free from defects in material and workmanship for a period of one (1) year from the date of purchase when it is used under normal household conditions and maintained according to the requirements outlined in the Owner's Guide, subject to the following conditions and exclusions:

What is covered by this warranty?

1. The original unit and/or non-wearable parts deemed defective, in SharkNinja's sole discretion, will be repaired or replaced up to one (1) year from the original purchase date.
2. In the event a replacement unit is issued, the warranty coverage ends six (6) months following the receipt date of the replacement unit or the remainder of the existing warranty, whichever is later. SharkNinja reserves the right to replace the unit with one of equal or greater value.

What is not covered by this warranty?

1. Normal wear and tear of wearable parts (such as blending vessels, lids, blades, blender bases, etc.), which require regular maintenance and/or replacement to ensure the proper functioning of your unit, are not covered by this warranty. Replacement parts are available for purchase at ninjaaccessories.com.
2. Any unit that has been tampered with or used for commercial purposes
3. Damage caused by misuse, abuse, negligent handling, failure to perform required maintenance (e.g., failure to keep the well of the motor base clear of food spills and other debris), or damage due to mishandling in transit.
4. Consequential and incidental damages.
5. Defects caused by repair persons not authorized by SharkNinja. These defects include damages caused in the process of shipping, altering, or repairing the SharkNinja product (or any of its parts) when the repair is performed by a repair person not authorized by SharkNinja.
6. Products purchased, used, or operated outside North America.

How to get service

If your appliance fails to operate properly while in use under normal household conditions within the warranty period, visit ninjakitchen.com/support for product care and maintenance self-help. Our Customer Service Specialists are also available at **1-877-646-5288** to assist with product support and warranty service options, including the possibility of upgrading to our VIP warranty service options for select product categories. So we may better assist you, please register your product online at registryourninja.com and have the product on hand when you call.

SharkNinja will cover the cost for the customer to send in the unit to us for repair or replacement. A fee of \$19.95 (subject to change) will be charged when SharkNinja ships the repaired or replacement unit.

How to initiate a warranty claim

You must call **1-877-646-5288** to initiate a warranty claim. You will need the receipt as proof of purchase. We also ask that you register your product online at registryourninja.com and have the product on hand when you call, so we may better assist you. A Customer Service Specialist will provide you with return and packing instruction information.

How state law applies

This warranty gives you specific legal rights, and you also may have other rights that vary from state to state. Some states do not permit the exclusion or limitation of incidental or consequential damages, so the above may not apply to you.

SharkNinja Operating LLC
US: Needham, MA 02494
CAN: Ville St-Laurent, QC H4S 1A7
1-877-646-5288
ninjakitchen.com

Illustrations may differ from actual product. We are constantly striving to improve our products, therefore the specifications contained herein are subject to change without notice.

AUTO-IQ, NINJA, and PRECISION PROCESSOR are registered trademarks of SharkNinja Operating LLC.

For SharkNinja U.S. patent information, visit sharkninja.com/uspatents/

© 2020 SharkNinja Operating LLC
PRINTED IN CHINA
BN600_Series_IB_MP_Mv6

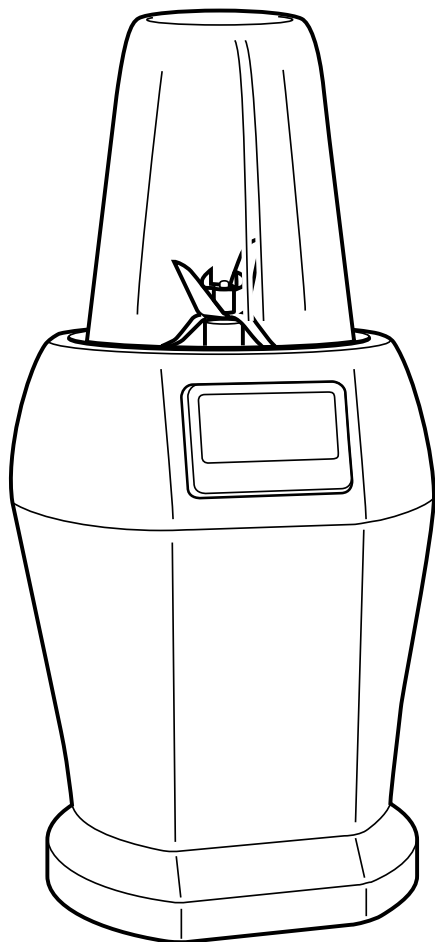


@ninjakitchen

NINJA®

BL450 Series

OWNER'S GUIDE
GUIDE DU PROPRIÉTAIRE



www.ninjakitchen.com
1-877-646-5288

IMPORTANT SAFETY INSTRUCTIONS

For Household Use Only

WHEN USING ELECTRICAL APPLIANCES, BASIC SAFETY PRECAUTIONS SHOULD ALWAYS BE FOLLOWED, INCLUDING THE FOLLOWING:

READ ALL INSTRUCTIONS BEFORE USING YOUR NUTRI NINJA™ PRO.

POLARIZED PLUG

⚠ WARNING: To reduce the risk of electric shock, this appliance has a polarized plug (one blade is wider than the other). This plug will fit into a polarized outlet only one way. If the plug does not fit fully into the outlet, reverse the plug. If it still does not fit, contact a qualified electrician to install the proper outlet. **DO NOT modify the plug in any way.**

⚠ WARNING: Extension cords are not recommended for use with this product.

⚠ WARNING: TO REDUCE THE RISK OF FIRE, ELECTRIC SHOCK OR INJURY:

- 1 **⚠ WARNING:** Remove utensils prior to processing. Failure to remove may cause the jar to be damaged or to shatter which may cause personal injury.
- 2 **⚠ CAUTION:** Blade assembly is sharp, handle with care. When handling the blade assembly, always hold it by the base.
- 3 **⚠ CAUTION:** Do not blend hot liquids, doing so may cause excessive pressure build-up, resulting in risk of the user being burned.
- 4 **⚠ CAUTION:** We do not recommend grinding in any of our Nutri Ninja Cups.
- 5 **⚠ CAUTION:** Remove the Pro Extractor Blades™ Assembly from the Nutri Ninja cup upon completion of blending. Do not store ingredients before or after blending them in the cup with the blade assembly attached. Some foods may contain active ingredients or release gases which will expand if left in a sealed container, resulting in excessive pressure buildup that can pose a risk of injury. For ingredient storage in the cup, use only spout lid to cover.
- 6 **CAUTION:** DO NOT process dry ingredients without adding liquid to the cup. This product is not intended for dry blending
- 7 **⚠ CAUTION:** DO NOT use stainless steel cup accessory model XSKDWSS24 with blender.

- 8 To protect against electrical shock, do not submerge the appliance or allow the power cord to come into contact with water or any other liquid.
- 9 **DO NOT** allow the appliance to be used by children. Close supervision is necessary when used near children. This is not a toy.
- 10 Never leave an appliance unattended when in use.
- 11 Remove the power cord from the electrical outlet when not in use, before assembling or disassembling parts and before cleaning. To unplug, grasp the plug and pull from the electrical outlet. Never pull from the power cord.
- 12 **DO NOT** abuse the power cord. Never carry the appliance by the power cord or yank it to disconnect from electrical outlet; instead grasp the plug and pull to disconnect.
- 13 **DO NOT** operate any appliance with a damaged cord or plug, or after the appliance malfunctions, has been dropped or damaged in any manner. This appliance has no serviceable parts. Return the appliance to SharkNinja Operating LLC for examination, repair or adjustment.
- 14 **DO NOT** let the power cord hang over the edge of table or counter or touch hot surfaces such as the stove.
- 15 Always use appliance on a dry, level surface.
- 16 Keep hands, hair, clothing, as well as utensils out of container while processing to reduce the risk of severe injury to persons or damage to the appliance. A scraper may be used but only when the appliance is not running.
- 17 Avoid contact with moving parts.
- 18 **DO NOT** attempt to sharpen blades.
- 19 **DO NOT** use the appliance if Pro Extractor Blades Assembly is bent or damaged.
- 20 To reduce risk of injury, never place the blade assembly on the base without the Nutri Ninja Cup properly attached.
- 21 **DO NOT** operate this appliance on or near any hot surfaces (such as gas or electric burner or in a heated oven).
- 22 The use of attachments or accessories including canning jars, not recommended by the manufacturer may result in fire, electric shock or personal injury.
- 23 **DO NOT** remove the cup from the motor base while the appliance is running.
- 24 To reduce the risk of injury, **NEVER** operate the appliance without the Blade Assembly in place; **DO NOT** try to defeat the interlock mechanism; make sure that the attachment is properly installed before operating the appliance.
- 25 **DO NOT** expose cups to extreme temperature changes.
- 26 **DO NOT** overfill.
- 27 **DO NOT** operate the appliance empty.
- 28 If the appliance overheats, a thermal switch will become activated and shut off the motor. To reset, unplug the appliance and let it cool down for approximately 30 minutes before using again.
- 29 **THIS PRODUCT IS INTENDED FOR HOUSEHOLD USE ONLY.** Do not use this appliance for anything other than its intended use. Do not use outdoors.
- 30 Appliance accessories are not intended to be used in the microwave. Do not place the cup or the lid in the microwave as it may result in damage to the accessories.

SAVE THESE INSTRUCTIONS

CONSIGNES DE SÉCURITÉ IMPORTANTES

Pour usage domestique seulement

LORS DE L'UTILISATION D'APPAREILS ÉLECTRIQUES, DES MESURES DE SÉCURITÉ DE BASE DOIVENT TOUJOURS ÊTRE SUIVIES, Y COMPRIS LES SUIVANTES :

LIRE TOUTES LES DIRECTIVES AVANT D'UTILISER VOTRE NUTRI NINJA^{MC} PRO.

AVERTISSEMENT CONCERNANT LA

⚠ FICHE POLARISÉE : afin de réduire le risque de décharges électriques, cet appareil est muni d'une fiche polarisée (une lame est plus large que l'autre). Cette fiche s'insère dans une prise polarisée dans un seul sens. Si la fiche ne s'insère pas entièrement dans la prise, inversez la fiche. Si la fiche ne s'insère toujours pas, communiquez avec un électricien accrédité afin qu'il installe la prise appropriée.

NE MODIFIEZ PAS la prise d'aucune façon.

⚠ AVERTISSEMENT :
L'utilisation d'une rallonge électrique n'est pas recommandée pour ce produit.

⚠ AVERTISSEMENT :
AFIN DE RÉDUIRE LES RISQUES D'INCENDIE, D'ÉLECTROCUTION OU DE BLESSURE :

- 1 **⚠ AVERTISSEMENT :** retirez tout ustensile avant de transformer des aliments. Sinon, cela pourrait endommager le contenant ou le faire éclater et ainsi causer des blessures.
- 2 **⚠ AVERTISSEMENT :** Le jeu de lames est tranchant, manipuler avec soin. Lors de la manipulation du jeu de lame, tenez-le toujours par la base.
- 3 **⚠ AVERTISSEMENT :** ne mélangez pas de liquides chauds; cela pourrait entraîner une accumulation de pression excessive, ce qui présente un risque de brûlure pour l'utilisateur.
- 4 **⚠ AVERTISSEMENT :** nous ne recommandons pas de moulin des aliments dans les gobelets Nutri Ninja.
- 5 **⚠ AVERTISSEMENT :** retirez le jeu de lames Pro Extractor Blades^{MC} du gobelet Nutri Ninja après avoir mélangé les ingrédients. N'entrez pas les ingrédients avant ou après les avoir mélangés dans le gobelet fixé au jeu de lames. Certains aliments peuvent contenir des ingrédients actifs ou libérer des gaz qui prendront de l'expansion s'ils sont laissés dans un récipient fermé, entraînant une accumulation excessive de pression qui peut poser un risque de blessure. Utilisez seulement le couvercle à bec verseur pour couvrir les ingrédients à entreposer dans le gobelet.
- 6 **AVERTISSEMENT :** NE MÉLANGEZ PAS les ingrédients secs avant d'avoir ajouté des liquides dans le gobelet. Ce produit n'est pas fait pour les ingrédients secs.

- 7 **⚠ AVERTISSEMENT : N'UTILISEZ PAS le gobelet en acier inoxydable modèle XSKDWSS24 avec le mélangeur.**
- 8 Pour vous protéger contre les décharges électriques, n'immergez pas l'appareil et ne laissez pas le cordon d'alimentation entrer en contact avec de l'eau ou tout autre liquide.
- 9 **NE LAISSEZ PAS** les enfants se servir de l'appareil. Une surveillance étroite est nécessaire lorsque l'appareil est utilisé en présence d'enfants. Cet appareil n'est pas un jouet.
- 10 Ne laissez jamais un appareil en marche sans surveillance.
- 11 Débranchez le cordon d'alimentation de la prise électrique lorsqu'il n'est pas utilisé, avant de monter ou de démonter des pièces et avant le nettoyage. Pour le débrancher, saisissez la fiche et tirez-la de la prise électrique. Ne tirez jamais sur le cordon d'alimentation.
- 12 **PRENEZ SOIN** du cordon d'alimentation. Ne portez jamais l'appareil par le cordon d'alimentation et ne tirez pas sur celui-ci pour débrancher l'appareil; tirez plutôt sur la fiche.
- 13 **N'UTILISEZ PAS** un appareil dont le cordon ou la fiche est endommagé, qui ne fonctionne pas bien ou qui a été échappé ou endommagé de quelque façon que ce soit. Cet appareil ne comporte aucune pièce qui puisse être réparée. Retournez l'appareil à SharkNinja Operating LLC aux fins de vérification, de réparation ou de réglage.
- 14 **NE LAISSEZ PAS** le cordon pendre d'une table ou du comptoir ni toucher des surfaces chaudes, comme la cuisinière.
- 15 Utilisez toujours l'appareil sur une surface sèche et plane.
- 16 Gardez les mains, les cheveux, les vêtements et les ustensiles hors du contenant pendant l'utilisation pour réduire le risque de blessures graves ou de dommages à l'appareil. Un grattoir peut être utilisé, mais uniquement lorsque l'appareil n'est pas en marche.
- 17 Évitez d'entrer en contact avec des pièces mobiles.
- 18 **NE TENTEZ PAS** d'aiguiser les lames.
- 19 **N'UTILISEZ PAS** l'appareil si le Jeu de lames Pro Extractor Blades est plié ou endommagé.
- 20 Pour réduire les risques de blessures, ne déposez jamais les jeux de lames sur la base sans fixer le gobelet Nutri Ninja correctement.
- 21 **N'UTILISEZ PAS** l'appareil sur ou près d'une surface chaude (comme un brûleur électrique ou à gaz, ou le dessus d'un four chaud).
- 22 L'utilisation de pièces et d'accessoires qui ne sont pas recommandés par le fabricant, incluant les bocaux, peut provoquer un incendie, une décharge électrique ou des blessures.
- 23 **NE RETIREZ PAS** le gobelet du bloc-moteur pendant que l'appareil est en marche.
- 24 Pour réduire le risque de blessure, n'utilisez **JAMAIS** l'appareil sans le jeu de lames en place; **NE TENTEZ PAS** de forcer le mécanisme de verrouillage; assurez-vous que l'accessoire est correctement installé avant de faire fonctionner l'appareil.
- 25 **N'EXPOSEZ PAS** les gobelets à des changements extrêmes de température.
- 26 **NE PAS** trop remplir le récipient.
- 27 **N'UTILISEZ PAS** l'appareil si le contenant est vide.
- 28 En cas de surchauffe de l'appareil, un thermocontacteur sera activé et arrêtera le moteur. Pour le réinitialiser, débranchez l'appareil et laissez-le refroidir pendant environ 30 minutes avant de l'utiliser de nouveau.
- 29 **CET APPAREIL EST CONÇU POUR UN USAGE DOMESTIQUE SEULEMENT.** N'utilisez l'appareil qu'aux fins pour lesquelles il est prévu. N'utilisez pas cet appareil à l'extérieur.
- 30 Les accessoires de l'appareil ne sont pas conçus pour toute utilisation dans le micro-ondes. Ne placez ni le gobelet ni le couvercle dans le micro-ondes, car cela peut les endommager.

CONSERVER CES INSTRUCTIONS

TECHNICAL SPECIFICATIONS

Voltage: 120V., 60Hz.

Power: 900 Watts

Nutri Ninja™ Cup Capacity: 24 ounces (3 cups, 710 ml)
18 ounces (2.25 cups, 530 ml)
12 ounces (1.5 cups, 350 ml)

CARACTÉRISTIQUES TECHNIQUES

Tension : 120V, 60Hz

Puissance : 900 Watts

Capacité du gobelet Nutri Ninja^{MC} : 710 ml (3 tasses, 24 onces)
530 ml (2,25 tasses, 18 onces)
350 ml (1.5 tasses, 12 onces)



Contents

**Thank you for
purchasing the
Nutri Ninja™ Pro**

Getting to Know Your Nutri Ninja Pro.....	8
Before First Use	10
Use	11
Suggested Uses.....	12
Care & Maintenance	13
Troubleshooting Guide.....	14
Replacement Parts.....	14
Warranty & Registration.....	15

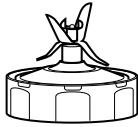
Table des matières

**Merci d'avoir
acheté le Nutri
Ninja^{MC} Pro.**

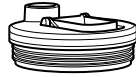
Apprendre à connaître votre Nutri Ninja Pro.....	16
Avant la première utilisation	18
Utilisation	19
Utilisations suggérées	20
Nettoyage et entretien.....	21
Guide de dépannage.....	22
Pièces de rechange.....	22
Garantie et enregistrement	23

Getting To Know Your Nutri Ninja™ Pro

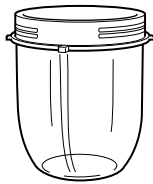
a



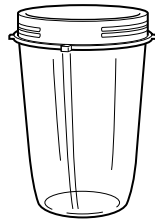
b



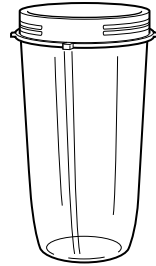
c



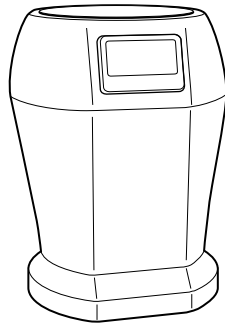
d



e



f



a Pro Extractor Blades™ Assembly

b Spout lid

c 12 oz Nutri Ninja Cup

d 18 oz Nutri Ninja Cup

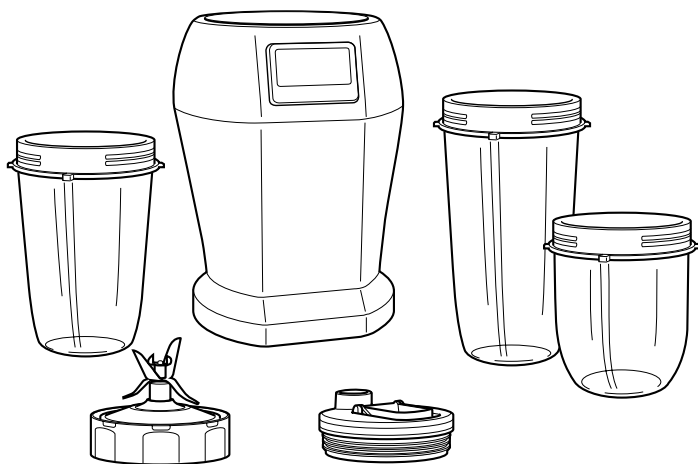
e 24 oz Nutri Ninja Cup

f Motor Base

g Power Cord (not shown)

NOTE: The quantity, sizes, and presence of some accessories depends on the specific model configuration. All configurations include a motor base, Pro Extractor Blades™ Assembly, certain Nutri Ninja™ cups, spout lids, and instructions.

The Nutri Ninja™ Pro is a high powered innovative tool with a compact design and outstanding performance. It is perfect for ice crushing, chopping, blending, and nutrient and vitamin extraction*. Blend and go with the convenient spout lids, create delicious drinks to get you out the door quickly! Best results are achieved when you Pulse.



FEATURES:

- 900 Watt Motor
- Nutrient & Vitamin Extraction*
- Personalized, healthy drinks and juices
- Spout lid lids for drinks on the go
- BPA-free Cups
- Cord storage

* Extract a Drink Containing Vitamins & Nutrients From Fruits & Veggies

PLEASE KEEP THESE IMPORTANT SAFEGUARDS IN MIND WHEN USING THE APPLIANCE:

IMPORTANT: Make sure that the motor base is plugged in for use.

IMPORTANT: DO NOT attempt to operate the appliance without the lid on.

IMPORTANT: Never run the appliance empty.

IMPORTANT: Appliance accessories are not intended to be used in the microwave as it may result in damage to the accessories.

⚠ CAUTION: Do not immerse the motor base into water or any other liquid.

1 Remove all packaging material and labels from the appliance. Separate/remove all parts from each other.

2 Wash the lids, Nutri Ninja cups and Pro Extractor Blades™ Assembly in warm, soapy water. When washing the Pro Extractor Blades Assembly, use a dish-washing utensil with a handle to avoid direct hand contact with blades.

⚠ WARNING: Handle the Pro Extractor Blades Assembly with care when washing, as the blades are sharp.

3 Handle blade assemblies with care to avoid contact with sharp edges. Rinse and air dry thoroughly.

4 The lids, Nutri Ninja Cups, and Pro Extractor Blades Assembly are all dishwasher safe. It is recommended that the lids and Pro Extractor Blades Assembly be placed on the top rack. Ensure that the Pro Extractor Blades Assembly is removed from the cups before placing in the dishwasher.

5 Wipe the motor base clean with a damp cloth.

Use

- ⚠ **WARNING:** Handle the Pro Extractor Blades Assembly with care, as the blades are sharp.
 - ⚠ **WARNING:** Never leave the appliance unattended while in use.
 - ⚠ **WARNING:** Remove utensils prior to processing. Failure to remove may cause the bowl to be damaged or to shatter, which may cause personal injury.
 - ⚠ **CAUTION:** Do not blend hot liquids, doing so may cause excessive pressure buildup, resulting in risk of the user being burned.
 - ⚠ **CAUTION:** Remove the Pro Extractor Blades Assembly from the cup upon completion of blending. Do not store ingredients before or after blending in the Nutri Ninja cup with the blade assembly attached. Some foods may contain active ingredients or release gases which will expand if left in a sealed container, resulting in excessive pressure buildup that can pose a risk of injury. For ingredient storage in the cup, only use spout lid to cover.
- IMPORTANT:** Make sure that the motor base is plugged in for use.

ASSEMBLY

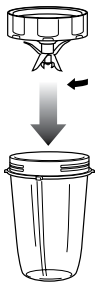


Fig. 1

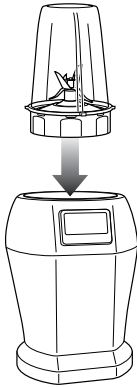


Fig. 2

PULSE

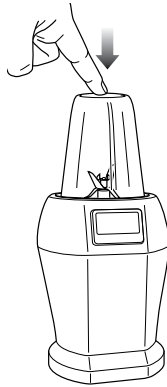


Fig. 3

REMOVAL

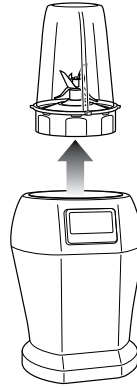


Fig. 4



Fig. 5



For best results, use short "PULSES"!

- 1 Review warning and caution statements above before proceeding to number 2.
- 2 Place the motor base on a clean, dry, level surface such as a counter or table top.
- 3 Add ingredients to the Nutri Ninja™ cup.
NOTE: Do not overfill! To avoid spilling, do not add ingredients past the "MAX" fill line.
- 4 Place the Pro Extractor Blades Assembly onto the cup and twist it on tightly until you have a good seal. **(Fig. 1)**
- 5 Turn the cup upside down and place it onto the motor base, aligning the tabs on the cup with the motor base. **(Fig. 2)**
- 6 Press down on the top of the cup in short intervals to activate. **(Fig. 3)**
- 7 When you have reached your desired consistency, stop the appliance by removing your hand from the cup. Wait for the motor to stop running. Pull straight up to remove. **(Fig. 4)**
- 8 Turn the cup upright and remove the Pro Extractor Blades Assembly by twisting the Pro Extractor Blades Assembly counterclockwise. **(Fig. 5)**
- 9 Do not store blended contents with the Pro Extractor Blade Assembly attached.
- 10 Place the spout lid onto the cup, twist to seal and enjoy!
- 11 For storage, only use spout lid lid to cover.
- 12 Be sure to store the Pro Extractor Blades Assembly attached to an empty cup when not in use.
- 13 Make sure that the motor base is unplugged when not in use.

Suggested Uses

PURPOSE / FUNCTION	SUGGESTED CUP	TYPE OF FOOD
Chopping / Pulsing	12 oz 18 oz 24 oz	Salsa Leafy Herbs
Mixing	12 oz 18 oz 24 oz	Batters Dips
Sauces*	12 oz 18 oz 24 oz	Vinaigrettes Salad Dressings Simple Sauces*
Frozen Blending	12 oz 18 oz 24 oz	Ice Frozen Fruit Ice Cream
Nutrient Juices/Smoothies	12 oz 18 oz 24 oz	Fruits Vegetables Leafy Greens

* When blending sauces, make sure they're cooled to room temperature first - Ninja® containers are not intended for hot blending.

⚠ CAUTION: DO NOT process dry ingredients without adding liquid to the cup. This product is not intended for dry blending.

FILLING YOUR NUTRI NINJA™

For best results, always follow recipe directions when filling your Nutri Ninja cups. When you're not using a recipe, use the following guidelines:

Start with your fresh fruit or veggies. Then add any nuts, seeds or powder followed by any liquids like juice or milk. More liquid can help to integrate powder. Then add your frozen fruit and ice. Remember to securely tighten the blade and don't overfill the cups. **(Fig. 6)**

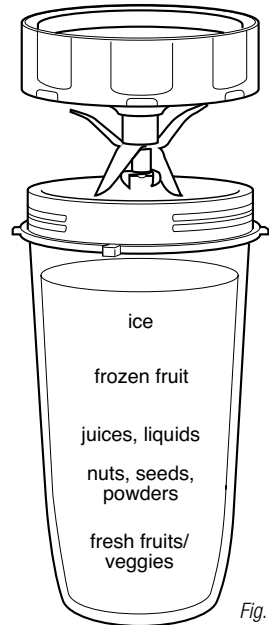


Fig. 6

HOW TO CLEAN

⚠ CAUTION: Make sure that the motor base is unplugged from the power source before inserting or removing any attachment and before cleaning.

⚠ CAUTION: DO NOT immerse the motor base into water or any other liquid.

- 1 Separate/remove all parts from each other.
- 2 **Hand Washing:** Wash the lids, Nutri Ninja™ cups and Pro Extractor Blades™ Assembly in warm, soapy water. When washing the Pro Extractor Blades Assembly, use a dish-washing utensil with a handle to avoid direct hand contact with blades. Handle Pro Extractor Blades Assembly with care to avoid contact with sharp edges. Rinse and air dry thoroughly.

Dishwasher: The Nutri Ninja cups, lids, and Pro Extractor Blades Assembly are all dishwasher safe. The lids and Pro Extractor Blades Assembly are top rack dishwasher safe. Ensure the Pro Extractor Blades Assembly is removed from the cup before placing in the dishwasher. Care when handling Pro Extractor Blades Assembly.

⚠ WARNING: Handle the Pro Extractor Blades Assembly with care when washing, as the blades are sharp. Contact with the blades' edges can result in laceration.

- 3 Wipe the motor base with a clean, damp cloth. Allow time to dry before operation.

If the appliance needs servicing, please call customer service at 1-877-646-5288.

HOW TO STORE

- 1 Store the Nutri Ninja Pro upright with the blade assembly attached to the Nutri Ninja Cup. Do not place anything on top. Store the rest of the attachments in a safe place where they will not be damaged and won't cause harm. Loosely wrap the power cord around the cord wrap.

NOTE: Do not store blended or unblended ingredients in the Nutri Ninja Cup with the blade assembly attached.

RESETTING THE MOTOR THERMOSTAT

The Nutri Ninja Pro features a unique safety system which prevents damage to the unit's motor and drive system should you inadvertently overload your appliance. If the appliance is being overloaded, the motor will stop. To reset the appliance, follow the resetting procedure below:

- 1 Unplug the appliance from the electrical outlet.
- 2 Remove and empty the cup and ensure that no food is jamming the Pro Extractor Blades Assembly.
- 3 Allow the appliance to cool for approximately 30 minutes.
- 4 Re-install the cup onto the base and re-plug the appliance into the electrical outlet.
- 5 Proceed to use the appliance as before while making sure not to exceed the recommended maximum capacities.

Troubleshooting Guide

PROBLEMS	POSSIBLE REASONS & SOLUTIONS
Motor doesn't start or Pro Extractor Blades Assembly doesn't rotate.	Make sure the unit is plugged in. Place the Nutri Ninja Cup onto the motor base, aligning the tabs on the cup with the motor base.
Food is unevenly chopped.	Either you are chopping too much food at once, or you are not pulsing properly. Reduce the amount of food in the cup.
Food is too finely chopped or too watery.	The food has been over processed. Use short pulses for best results. Press down on the cup in short intervals.
Cup is leaking.	Make sure that your lid or blade assembly is properly assembled to the cup. Leaking may occur if it is misaligned when twisted onto the cup. Turn the lid tightly clockwise.
Unit doesn't turn on.	Make sure the unit is plugged in. Make sure the Pro Extractor Blades Assembly is properly assembled to the cup and that it is not misaligned.
Unit doesn't turn off.	Unplug the power cord from the electrical outlet and call customer service for support.
Doesn't mix well.	Pulse ingredients for best results. Press down on the cup in short intervals for even blending and chopping. For frozen ingredients, pulse in short intervals of 2-5 seconds and repeat.
Lid/blade assembly will not properly align to the cup.	Set the cup on a level surface. Place the lid or Pro Extractor Blades Assembly on top of the cup and align the threads so that the lid/blades sit flat on the cup. Twist clockwise so that the lid/blades evenly align to the cup until you have a tight seal.

Replacement Parts

ORDERING REPLACEMENT PARTS

To order additional parts and attachments, please visit our website: www.ninjakitchen.com or feel free to contact customer service: 1-877-646-5288.



ONE (1) YEAR LIMITED WARRANTY

SharkNinja Operating LLC warrants this product to be free from material defects and workmanship for a period of one (1) year from the date of purchase when utilized for normal household use, subject to the following conditions, exclusions and exceptions.

The liability of **SharkNinja Operating LLC** is limited solely to the cost of the repair or replacement of the unit at our option. This Limited Warranty does not cover normal wear of parts and does not apply to any unit that has been tampered with or used for commercial purposes. This Limited Warranty does not cover damage caused by misuse, abuse, negligent handling or damage due to faulty packaging or mishandling in transit. This Limited Warranty does not cover damage or defects caused by or resulting from damages from shipping or repairs, service or alteration to the product or any of its parts, which have been performed by a repair person not authorized by **SharkNinja Operating LLC**.

If your appliance fails to operate properly while in use under normal household conditions within the Limited Warranty period, you may return the complete appliance and accessories with proof of purchase and date, freight prepaid. For Customer Service support, call 1-877-646-5288 or visit our website www.ninjakitchen.com.

If the appliance is found by **SharkNinja Operating LLC** to be defective, in **SharkNinja Operating LLC's** sole discretion, we will repair or replace it free of charge. Proof of purchase date and a check made payable to **SharkNinja Operating LLC** in the amount of \$19.95 to cover the cost of return shipping and handling must be included.*

This Limited Warranty is extended to the original purchaser of the unit and excludes all other legal, implied and/or conventional warranties. The responsibility of **SharkNinja Operating LLC** if any, is limited to the specific obligations expressly assumed by it under the terms of this Limited Warranty. In no event is **SharkNinja Operating LLC** liable for incidental or consequential damages to anyone of any nature whatsoever. Some states do not permit the exclusion or limitation of incidental or consequential damages, so the above may not apply to you.

This Limited Warranty gives you specific legal rights, and you may also have other rights which vary from state to state or from province to province.

***IMPORTANT: Carefully pack item to avoid damage in shipping. Be sure to include proof of purchase date and to attach tag to item before packing with your name, complete address and phone number with a note giving purchase information, model number and what you believe is the problem with the item. We recommend you insure the package (as damage in shipping is not covered by your Limited Warranty). Mark the outside of your package "ATTENTION CUSTOMER SERVICE".**

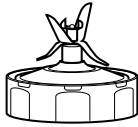
PRODUCT REGISTRATION

Please visit www.ninjakitchen.com or call **1-877-646-5288** to register your new Ninja® product within ten (10) days of purchase. You will be asked to provide the store name, date of purchase and model number along with your name and address.

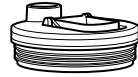
The registration will enable us to contact you in the unlikely event of a product safety notification. By registering you acknowledge to have read and understood the instructions for use, and warnings set forth in the accompanying instructions.

Apprendre à connaître votre Nutri Ninja^{MC} Pro

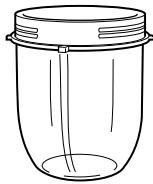
a



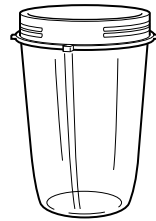
b



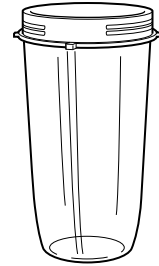
c



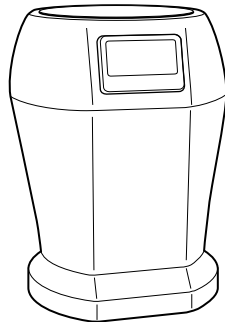
d



e



f



a Jeu de lames Pro Extractor Blades^{MC}

b Couvercles à bec verseur

c Gobelet Nutri Ninja de 350 ml

d Gobelet Nutri Ninja de 530 ml

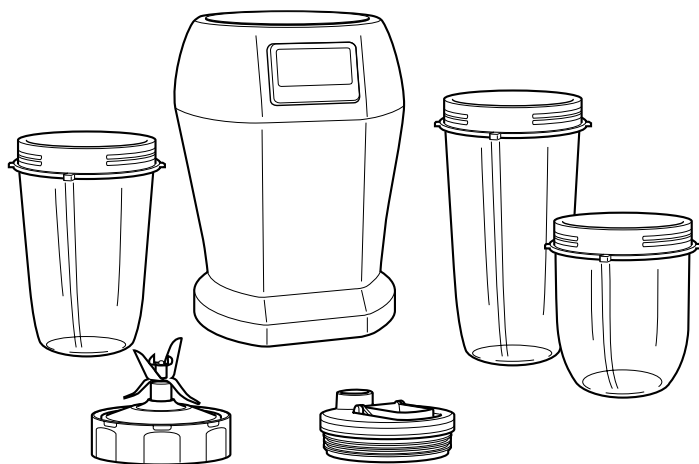
e Gobelet Nutri Ninja de 710 ml

f Bloc-moteur

g Cordon d'alimentation (non illustré)

NOTA: La cantidad, tamaño y presencia de algunos accesorios depende de la configuración específica del modelo. Todas las configuraciones incluyen una base con motor, mecanismo de cuchillas, tazas Nutri NinjaTM, tapas con pico, cable de alimentación e instrucciones.

Le Nutri Ninja^{MC} Pro est un outil innovant de haute puissance offrant une conception compacte et une performance exceptionnelle. Il est parfait pour le broyage de la glace, le hachage, le mélange et l'extraction des nutriments et des vitamines*. Mélangez et partez avec les couvercles à bec verseur pratiques, créez de délicieuses boissons à emporter! Les meilleurs résultats sont obtenus lorsque vous utilisez le mode d'impulsion.



CARACTÉRISTIQUES :

- Extraction des nutriments et vitamines*
- Moteur de 900 watts
- Boissons et jus personnalisés et sains à emporter
- Couvercles à bec verseur pour les boissons à emporter
- Gobelets sans BPA
- Rangement du cordon

* Extrayez une boisson contenant des vitamines et des nutriments provenant de fruits et de légumes.

VEUILLEZ TOUJOURS GARDER CES CONSIGNES IMPORTANTES À L'ESPRIT LORSQUE VOUS UTILISEZ L'APPAREIL :

IMPORTANT : assurez-vous que le bloc-moteur est branché avant d'utiliser l'appareil.

IMPORTANT : NE TENTEZ PAS de faire fonctionner l'appareil sans couvercle.

IMPORTANT : ne faites jamais fonctionner l'appareil à vide.

IMPORTANT : les accessoires de l'appareil ne sont pas conçus pour toute utilisation dans le micro-ondes, car cela peut les endommager.

⚠ AVERTISSEMENT : n'immergez pas le bloc-moteur dans l'eau ou tout autre liquide.

- 1 Retirez tous les matériaux d'emballage et les étiquettes de l'appareil. Séparez et retirez toutes les pièces.
- 2 Lavez les couvercles, les gobelets Nutri Ninja et le jeu de lames Pro Extractor Blades à l'eau savonneuse tiède. Lavez le jeu de lames Pro Extractor Blades avec une brosse à vaisselle munie d'une poignée pour éviter tout contact direct avec les lames.

⚠ AVERTISSEMENT : le jeu de lames Pro Extractor Blades est coupant; manipulez-le avec soin en le lavant.

- 3 Manipulez le jeu de lames Pro Extractor Blades avec précaution pour éviter de toucher les bords coupants. Rincez et faites bien sécher à l'air.
- 4 Les couvercles, les gobelets Nutri Ninja et le jeu de lames Pro Extractor Blades peuvent être mis au lave-vaisselle. Nous vous recommandons de mettre les couvercles et le jeu de lames Pro Extractor Blades dans le panier supérieur. Assurez-vous de retirer le jeu de lames Pro Extractor Blades du gobelet avant de le mettre au lave-vaisselle.
- 5 Essuyez le bloc-moteur avec un chiffon humide.

Utilisation

- ⚠ **AVERTISSEMENT** : le jeu de lames Pro Extractor Blades est coupant; manipulez-le avec soin.
 - ⚠ **AVERTISSEMENT** : ne laissez jamais l'appareil en marche sans surveillance.
 - ⚠ **AVERTISSEMENT** : retirez tout ustensile avant de transformer des aliments. Sinon, cela pourrait endommager le bol ou le faire éclater et ainsi causer des blessures.
 - ⚠ **AVERTISSEMENT** : ne mélangez pas de liquides chauds; cela pourrait provoquer une accumulation de pression excessive, ce qui présente un risque de brûlure pour l'utilisateur.
 - ⚠ **AVERTISSEMENT** : retirez le jeu de lames Pro Extractor Blades du gobelet Nutri Ninja après avoir mélangé les ingrédients. Ne rangez pas les ingrédients avant ou après le mélange dans le gobelet Nutri Ninja avec le jeu de lames qui y est attaché. Certains aliments peuvent contenir des ingrédients actifs ou libérer des gaz qui prendront de l'expansion s'ils sont laissés dans un récipient fermé, entraînant une accumulation excessive de pression qui peut poser un risque de blessure. Utilisez seulement le couvercle à bec verseur pour couvrir les ingrédients à entreposer dans le gobelet.
- IMPORTANT** : assurez-vous que le bloc-moteur est branché avant d'utiliser l'appareil.

ASSEMBLAGE

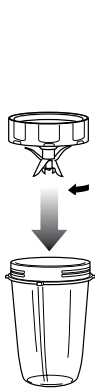


Fig. 1

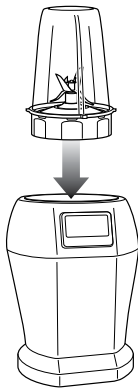


Fig. 2

IMPULSION

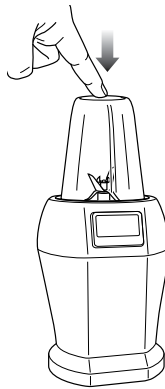


Fig. 3

RETRAIT

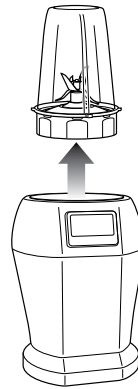


Fig. 4



Fig. 5



Pour de meilleurs résultats, utilisez de courtes « IMPULSIONS »!

- 1 Passez en revue les avertissements et les mises en garde ci-dessus avant de passer au numéro 2.
- 2 Placez le bloc-moteur sur une surface plane, propre et sèche comme un comptoir ou une table.
- 3 Mettez les ingrédients dans le gobelet Nutri Ninja^{MC}.
REMARQUE : ne pas trop remplir! Pour éviter de renverser le gobelet, ne pas ajouter d'ingrédients au-delà de la ligne de remplissage « MAX ».
- 4 Placez le jeu de lames Pro Extractor Blades dans le gobelet et vissez fermement celui-ci, jusqu'à ce qu'il soit bien serré. (Fig. 1)
- 5 Inversez le gobelet et placez-le sur le bloc-moteur en alignant les onglets du gobelet et ceux de la bloc-moteur. (Fig. 2)
- 6 Appuyez sur le haut du gobelet à courts intervalles pour activer le moteur. (Fig. 3)
- 7 Lorsque la consistance souhaitée est obtenue, arrêtez le moteur de l'appareil en retirant votre main du haut du gobelet. Attendez l'arrêt du moteur. Tirez vers le haut pour retirer le gobelet. (Fig. 4)
- 8 Redressez le gobelet et retirez le jeu de lames Pro Extractor Blades en le tournant dans le sens inverse des aiguilles d'une montre. (Fig. 5)
- 9 N'entreposez pas les mélanges avec le jeu de lames Pro Extractor Blades fixé.
- 10 Placez le couvercle à bec verseur sur le gobelet, serrez pour fermer et savourez!
- 11 Pour l'entreposage, utilisez seulement le couvercle à bec verseur.
- 12 Assurez-vous d'entreposer le jeu de lames Pro Extractor Blades fixé à un gobelet vide lorsqu'il n'est pas utilisé.
- 13 Assurez-vous que le bloc-moteur est débranché lorsque l'appareil n'est pas utilisé.

Utilisation suggérée

OBJET/FONCTION	GOBELET PROPOSÉ	TYPE D'ALIMENTS
Hachage/Impulsion	350 ml 530 ml 710 ml	Salsa Fines herbes feuillues
Mélange	350 ml 530 ml 710 ml	Pâte à frire Trempettes
Sauces*	350 ml 530 ml 710 ml	Vinaigrettes Sauces pour salade Sauces simples*
Mélange d'ingrédients surgelés	350 ml 530 ml 710 ml	Glace Fruits surgelés Crème glacée
Jus et boissons frappées nutritives	350 ml 530 ml 710 ml	Fruits Légumes Légumes feuillus

* En mélangeant les sauces, assurez-vous qu'elles sont d'abord refroidies à la température ambiante; les contenants Ninja^{MD} ne sont pas conçus pour mélanger des aliments chauds.

⚠ AVERTISSEMENT : NE MÉLANGEZ PAS les ingrédients secs avant d'avoir ajouté des liquides dans le gobelet. Ce produit n'est pas fait pour les ingrédients secs.

REMPLEISSAGE DE VOTRE NUTRI NINJA^{MC}

Pour de meilleurs résultats, suivez toujours les indications des recettes lors du remplissage de vos gobelets Nutri Ninja. Lorsque vous n'utilisez pas de recette, utilisez les lignes directrices suivantes :

Commencez avec vos fruits ou légumes frais. Puis ajoutez des noix, des graines ou de la poudre et terminez par des liquides comme du jus ou du lait. Ajouter plus de liquide peut aider à intégrer la poudre. Ensuite, ajoutez vos fruits surgelés et la glace. N'oubliez pas de bien serrer le jeu de lames et de ne pas trop remplir le gobelet. (Fig. 6)



Fig. 6

COMMENT NETTOYER L'APPAREIL

⚠ AVERTISSEMENT : assurez-vous que le bloc-moteur est débranché de la source d'alimentation avant de fixer ou de retirer un accessoire et avant de nettoyer l'appareil.

⚠ AVERTISSEMENT : N'IMMERGEZ PAS le bloc-moteur dans l'eau ou tout autre liquide.

- 1 Séparez et retirez toutes les pièces.
- 2 **Nettoyage à la main** : lavez les couvercles, les gobelets Nutri Ninja^{MC} et le jeu de lames Pro Extractor Blades^{MC} à l'eau savonneuse tiède. Lavez le jeu de lames Pro Extractor Blades avec une brosse à vaisselle munie d'une poignée pour éviter tout contact direct avec les lames. Manipulez le jeu de lames Pro Extractor Blades avec précaution pour éviter de toucher les bords coupants. Rincez et faites bien sécher à l'air.

Lave-vaisselle : les couvercles, les gobelets Nutri Ninja et le jeu de lames Pro Extractor Blades peuvent être mis au lave-vaisselle. Les couvercles et le jeu de lames Pro Extractor Blades peuvent être mis dans le panier supérieur du lave-vaisselle. Assurez-vous de retirer le jeu de lames Pro Extractor Blades du gobelet avant de le mettre au lave-vaisselle.

⚠ AVERTISSEMENT : le jeu de lames Pro Extractor Blades est coupant; manipulez-le avec soin en le lavant. Le contact avec les lames peut causer des lésions.

- 3 Essuyez le bloc-moteur avec un chiffon propre et humide. Laissez-le sécher avant de l'utiliser.

Si l'appareil a besoin d'être réparé, veuillez communiquer avec le service à la clientèle en composant le 1-877-646-5288.

COMMENT RANGER L'APPAREIL

- 1 Entreposez le Nutri Ninja Pro en position verticale avec le jeu de lames fixé au gobelet Nutri Ninja. Ne mettez rien sur le dessus. Rangez le reste des accessoires dans un endroit sécuritaire où ils ne seront pas endommagés et ne causeront pas de blessures. Enroulez lâchement le cordon d'alimentation autour du rembobineur.

REMARQUE : ne conservez pas les ingrédients avant ou après le mélange dans le gobelet Nutri Ninja avec le jeu de lames qui y est attaché.

RÉINITIALISATION DU THERMOSTAT DU MOTEUR

Le Nutri Ninja Pro est doté d'un système de sécurité unique empêchant d'endommager le moteur de l'appareil et le système d'entraînement en cas de surcharge par inadvertance. En cas de surcharge de l'appareil, le moteur s'arrêtera. Pour le réinitialiser, suivez la procédure de réinitialisation ci-dessous :

- 1 Débranchez l'appareil de la prise électrique.
- 2 Retirez et videz le gobelet et veillez à ce qu'aucun aliment ne se coince dans le jeu de lames Pro Extractor Blades.
- 3 Laissez l'appareil refroidir pendant environ 30 minutes.
- 4 Réinstallez le gobelet sur le socle et rebranchez l'appareil dans la prise électrique.
- 5 Continuez à utiliser l'appareil comme auparavant en vous assurant de ne pas excéder les capacités maximales recommandées.

PROBLÈMES	RAISONS ET SOLUTIONS POSSIBLES
Le moteur ne démarre pas ou le Jeu de lames Pro Extractor Blades ne tourne pas.	Assurez-vous que l'appareil est bien branché. Placez le gobelet Nutri Ninja sur le bloc-moteur en alignant les languettes du gobelet et celles du bloc-moteur.
Les aliments ne sont pas hachés uniformément.	Soit vous hachez trop d'aliments à la fois, soit vous ne les hachez pas correctement. Réduisez la quantité d'aliments dans le gobelet.
Les aliments sont hachés trop finement ou sont trop liquides.	Les aliments ont été transformés trop longtemps. Utilisez de courtes impulsions pour obtenir de meilleurs résultats. Appuyez sur le gobelet à courts intervalles.
Le gobelet fuit.	Assurez-vous que le couvercle ou le jeu de lames est fixé adéquatement au gobelet. Une fuite peut se produire lorsque les filets du couvercle ou du jeu de lames ne sont pas correctement alignés. Bien serrer le couvercle dans le sens horaire.
L'appareil ne se met pas en marche.	Assurez-vous que l'appareil est bien branché. Veillez à ce que le jeu de lames Pro Extractor Blades soit fixé adéquatement au gobelet et que les filets soient bien alignés.
L'appareil ne s'éteint pas.	Débranchez le cordon d'alimentation de la prise électrique et appelez le service à la clientèle pour obtenir de l'aide.
L'appareil ne mélange pas bien.	Donnez des impulsions rapides pour des résultats optimaux. Appuyez sur la tasse par intervalles courts pour obtenir un mélange et un hachage uniformes. Pour les ingrédients surgelés, donnez de courtes impulsions de 2 à 5 secondes, et répétez.
Le couvercle ou le jeu de lames n'est pas serré adéquatement.	Déposez le gobelet sur une surface plane. Déposez le couvercle ou le jeu de lames Pro Extractor Blades sur la partie supérieure du gobelet et alignez les filets de sorte que le couvercle ou les lames reposent à plat sur le gobelet. Faites tourner le couvercle ou le jeu de lames dans le sens horaire de manière à les aligner uniformément au gobelet jusqu'à ce qu'ils soient bien scellés.

Pièces de rechange

COMMANDE DE PIÈCES DE RECHANGE

Pour commander des pièces et des accessoires supplémentaires, veuillez visiter notre site Web au www.ninjakitchen.com ou communiquer avec un représentant du service à la clientèle au 1-877-646-5288.

GARANTIE LIMITÉE D'UN (1) AN

SharkNinja Operating LLC garantit ce produit contre toute défectuosité de matériau ou de main-d'œuvre pour une période d'un (1) an à compter de la date d'achat lors de l'utilisation dans le cadre d'un usage domestique normal, sujet aux conditions, aux exclusions et aux exceptions suivantes.

La responsabilité de **SharkNinja Operating LLC** est limitée au coût de réparation ou de remplacement de l'appareil, à sa seule discrétion. Cette garantie limitée ne couvre pas l'usure normale des pièces et ne s'applique pas aux appareils ayant été utilisés de façon abusive ou à des fins commerciales. Cette garantie limitée ne couvre pas les dommages causés par une mauvaise utilisation, l'abus, la négligence lors de la manipulation, un emballage inadéquat ou la mauvaise manipulation pendant le transport. Cette garantie limitée ne couvre pas les dommages ou les défauts survenus pendant l'expédition, les réparations, l'entretien ou la modification du produit ou des pièces de celui-ci, qui ont été effectués par un réparateur non autorisé par **SharkNinja Operating LLC**.

Si votre appareil ne fonctionne pas comme il le devrait lors d'un usage domestique normal pendant la période de garantie limitée, vous pouvez retourner l'appareil et les accessoires avec la preuve et la date d'achat, port payé d'avance. Pour le service à la clientèle, composez le 1-877-646-5288 ou visitez www.ninjakitchen.com.

Si **SharkNinja Operating LLC** constate que l'appareil est défectueux, à la seule discrétion de **SharkNinja Operating LLC**, nous le réparerons ou le remplacerons sans frais. Une preuve de la date d'achat et un chèque libellé à l'ordre de **SharkNinja Operating LLC** d'un montant de 19,95 \$ pour couvrir le coût de l'expédition de retour et les frais de manutention doivent être inclus.*

Cette garantie limitée s'applique au premier acheteur de l'appareil et exclut toutes les autres garanties juridiques, implicites ou conventionnelles. La responsabilité de **SharkNinja Operating LLC**, s'il y en a une, se limite aux obligations spécifiques exprimées sous cette garantie limitée. En aucun cas **SharkNinja Operating LLC** ne peut être tenue responsable d'incidents ou de dommages indirects de quelque nature qu'ils soient. Certains états américains ou certaines provinces canadiennes n'acceptent pas l'exclusion ou la limitation de dommages accessoires ou indirects, auquel cas cette disposition ne s'appliquerait pas.

Cette garantie limitée vous confère des droits juridiques particuliers selon la loi; vous pouvez aussi bénéficier d'autres droits qui varient d'une province ou d'un État à l'autre.

***IMPORTANT : emballez soigneusement l'appareil pour éviter tout dommage pendant le transport. Avant d'emballer l'article, assurez-vous de joindre une preuve d'achat et d'apposer une étiquette sur l'article indiquant votre nom, adresse complète et numéro de téléphone, ainsi que de joindre une note fournissant des renseignements sur l'achat, le numéro de modèle et le problème que présente le produit. Il est recommandé de souscrire une assurance d'expédition (les dommages causés par le transport ne sont pas couverts par la garantie limitée). Indiquez la mention « A/S DU SERVICE À LA CLIENTÈLE » sur l'emballage.**

ENREGISTREMENT DU PRODUIT

Veillez consulter le www.ninjakitchen.com ou composer le 1-877-646-5288 pour enregistrer votre nouveau produit Ninja^{MD} au plus tard dix (10) jours après l'achat. Le nom du magasin, la date d'achat, le numéro de modèle ainsi que votre nom et votre adresse vous seront demandés.

L'enregistrement nous permettra de vous joindre dans le cas peu probable d'un avis de sécurité touchant le produit. Lorsque vous enregistrez votre produit, vous reconnaissez avoir lu et compris les instructions et les avertissements présentés dans le guide d'utilisation.



SharkNinja Operating LLC

US: Newton, MA 02459

CAN: Ville St-Laurent, QC H4S 1A7

1-877-646-5288

www.ninjakitchen.com

© 2017 SharkNinja Operating LLC

SharkNinja and Ninja are registered trademarks of SharkNinja Operating LLC.

Nutri Ninja and Pro Extractor Blades are trademarks of SharkNinja Operating LLC.

SharkNinja et Ninja sont des marques de commerce déposées de SharkNinja Operating LLC.

Nutri Ninja et Pro Extractor Blades sont des marques de commerces de SharkNinja Operating LLC.

Illustrations may differ from actual product. We are constantly striving to improve our products, therefore the specifications contained herein are subject to change without notice.

Les illustrations peuvent différer du produit réel. Nous tentons constamment d'améliorer nos produits; par conséquent, les caractéristiques indiquées dans le présent guide peuvent être modifiées sans préavis.

For SharkNinja U.S. Patent information visit www.sharkninja.com/USPatents

Pour obtenir de l'information sur les brevets de SharkNinja aux É.-U., visitez le www.sharkninja.com/USPatents

Printed in China / Imprimé en Chine

BL450_Series_DOB_E_F_IB_170217