

# Hello

## User Manual

Thank you for choosing digital microscope

### Preface

Thank you for choosing this equipment. The usage of this product is complicated, please read this manual carefully before using to understand the operation of microscope.

### Important Notes

1. Before the first use, please fully charge the device and charge it for at least one hour before normal use. Do not charge directly through a computer socket. Please use a 5V 1A adapter.
2. When the device is connected to the computer to view pictures, the device button does not work.
3. When connecting to the APP, please click Allow to read location information and storage space. Your privacy information will not be read.
4. Microscopes cannot be used on smartphones and PC at the same time.
5. Do not use mobile network or home WiFi during use.
6. This equipment is a combination of digital microscope and optical microscope. The magnification is not accurate, and the specific magnification effect is subject to the actual picture taken.
7. The best focal length of a microscope is 2-60mm. You might need to adjust the focal distance to see the object clearly by adjusting the focusing wheel.
8. WiFi connection only works on your phone and tablet, not your PC. If you want to use it on a PC, please download the PC software recommended in the manual first, and then connect it through the USB cable.
9. Turn off useless applications on your phone to make sure the microscope is working well and not halted.

- EN1 -

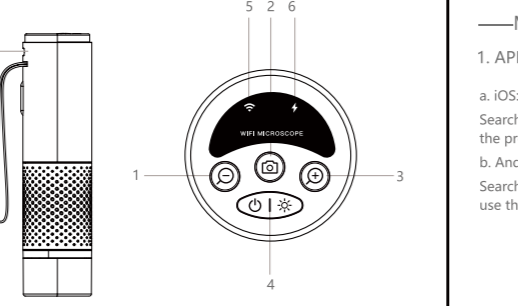
### Product introduction

Thank you for purchasing our WiFi electron microscope, which can be easily used in different areas including:

1. Textile industry, used for textile inspection
  2. Printing inspection
  3. PCB, precision machinery testing
  4. Educational purpose
  5. Hair check
  6. Skin examination
  7. Microbial observation
  8. Inspection of jewelry and coins (collection)
  9. Visual AIDS
- This is a portable WiFi electron microscope with a WiFi hotspot that can be used to connect iOS/Android phones and tablets. The microscope also supports USB connection to computers. The bigger the screen, the better the display and the clearer the picture. It also has the ability to take photos, video and file storage.

- EN2 -

### Function Introduction



1. Shrink button: short press to shrink 0.2 times, with a total of 6 multiples.
2. Photo/ Video button: short press to take photos, long press 2s to record.
3. Magnification button: short press to magnify 0.2 times, with a total of 6 times.
4. Power button/ light adjustment button: long press 3s to switch machine; Short press to adjust the size of the light, default on the maximum light. There are 4 levels of light.
5. Working indicator light: the blue light blinks when WiFi is not connected, and the blue light is steady on when WiFi is connected successfully.
6. Charging indicator light: When the battery is low, the red light flashes quickly, red when charging, green when fully charging.
7. Charging hole: support 5V/1A charging and data transmission.

- EN3 -

### Instructions

#### —Mobile users

##### 1. APP download and installation.

- a. iOS: Search the App Store for "Max-view" to download, install, and use the product.
- b. Android: Search Google Play for "Max-view" to download and install, and use the product.



- c. Or scan the following QR code with your smartphone to download and install.

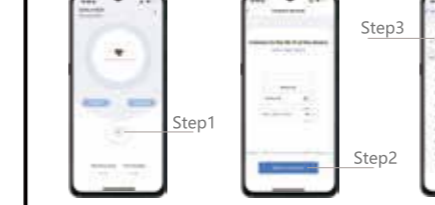


##### 2. Start the device

Long press the power button for 3s, you can see the blue light flashing.

- EN4 -

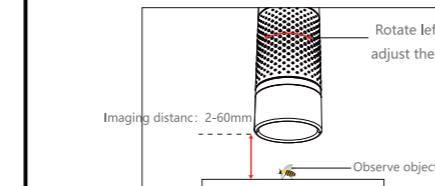
##### 3. Start the device



Open the APP page, enter the WiFi setting page in the Settings according to the above steps, find the WiFi hotspot named MAX-VIEW-XXXX (no password), and click Connect. After the connection is successful, return to the software, you can use the device (the working indicator light is blue and always on after the device is successfully connected).

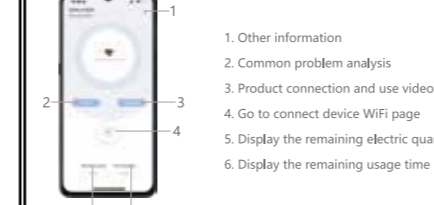
##### 4. Focus quickly

Equipment observation imaging distance is 2-60mm, and it cannot be imaged beyond the corresponding range. Adjust the focal distance by slowly turning the focusing wheel left and right to achieve maximum clarity.

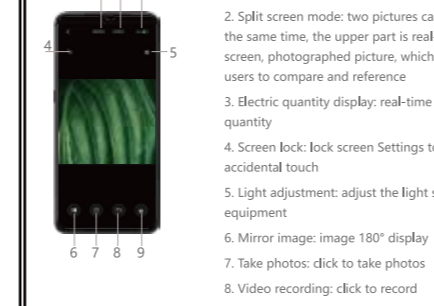


- EN5 -

##### 5. Function introduction to APP interface



1. Landscape mode: the smartphone can be used in landscape mode, and the observation image is larger
2. Split screen mode: two pictures can be displayed at the same time, the upper part is real-time observation screen, photographed picture, which is convenient for users to compare and reference
3. Electric quantity display: real-time display of electric quantity
4. Screen lock: lock screen Settings to prevent accidental touch
5. Light adjustment: adjust the light size of the equipment
6. Mirror image: image 180° display
7. Take photos: click to take photos
8. Video recording: click to record
9. File viewing: click to view photos and videos that have been taken



- EN6 -

#### —Computer users

--Windows systems:  
Windows vista/7/8/10 or higher are supported

##### 1. Software installation

- 1) For WIN 7/8 systems, download and install the "AMCAP" software.
- 2) For WIN 10 systems, search directly for the software "Windows Camera" (Note: Please disable the default laptop camera in Windows! And you must change the camera's privacy settings, which is needed for allowing access.)
- 3) Or download the application "Smart Camera" for your computer. Download link: [www.inskam.com/download/camera.zip](http://www.inskam.com/download/camera.zip)
- 4) Connect the Type-C/USB cable supplied with the microscope to the USB port on the back of the computer case. Press and hold the power button to turn on the device.
- 5) Different software is recommended for different Windows systems, please download the appropriate software for your system.

##### 2. Software page display:

###### 1)AMCAP page, as shown below



- EN7 -

###### 2)Windows Camera page, as shown below

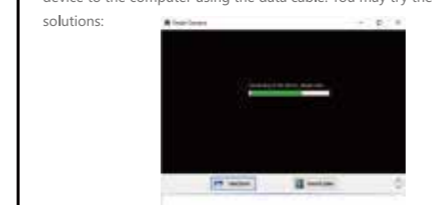


###### 3)Smart Camera page, as shown below



- EN8 -

###### \*Note: The following situation occurs for a long time when connecting the device to the computer using the data cable. You may try the following solutions:

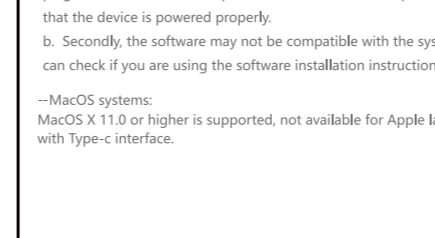


###### a. Firstly, please repeat plugging and unplugging the Type-C/USB cable or plug the cable into the USB port on the back of the computer case to ensure that the device is powered properly.

###### b. Secondly, the software may not be compatible with the system, so you can check if you are using the software installation instructions correctly.

###### --MacOS systems: MacOS X 11.0 or higher is supported, not available for Apple laptops with Type-c interface.

###### 1)AMCAP page, as shown below



- EN9 -

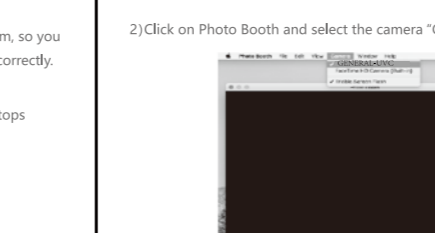
###### Opening the software (we recommend using the "Photo Booth" software that comes with your Apple computer).

1)Firstly, in the Applications directory of the Finder window, find an application called "Photo Booth".



###### 2. Connecting device

1) Connect the microscope to the USB port of your computer with the Type-C/USB cable that comes with the microscope, press and hold the power button to turn on the device. Open and run the application "Photo Booth".



###### 3)You can also use the alternative software "Quick Time Player".

- EN10 -

### Charging and Indicator Lights

1. When the battery is low, the red light will flash rapidly, use the 5V 1A power adapter to charge the device. When the battery is charged, the indicator light will turn red, and after the battery is fully charged, the indicator light will turn green.
2. When fully charged, you can use the microscope continuously for up to 1.5 hours.
3. When the device is completely powered off, charge it for at least one hour with a 5V/1A charger.
4. Please do not use a computer to charge the device. Or it automatically goes into PC camera mode.

### Frequently Asked Questions

#### Q1: Which systems is the device compatible with?

A1: Mobile support: Android 6.0, ios9.0 and above  
PC support: Windows vista/7/8/10, Mac OS X 11.0 and above, Linux/Chrome OS is not supported.

#### Q2: Why can't I connect to WiFi?

A2: It creates its own Wifi connection. Connect to device Wifi, not your home Wifi.

#### Q3: Can the device record sound?

A3: No, it doesn't record sound.

#### Q4: Why can't the smartphone search the wifi signal of the microscope when connecting the microscope and the computer with the data line?

A4: When you connect the microscope to the computer with the data cable, the microscope will assume that you want to view the image with the computer, so the phone cannot search the wifi signal of the microscope.

- EN11 -

#### Q5: Can I connect more than two devices at the same time?

A5: Sorry, you can only view images in real time on one device at a time.

#### Q6: I just got it and connected it to my computer, and it looks like the photo button doesn't work?

A6: The camera button on the product can only be used on smartphones, not computers.

#### Q7: Why do I use a different cable to connect the microscope to the computer, open the software and follow the instructions, but see no pictures?

A7: When connecting a microscope to a computer with a data cable, make sure that the data cable has data transmission function, because some data cables only have charging function but no data transmission function.

#### Q8: What is the reason for the motionless black patch on the screen when using the device to watch?

A8: Dust has entered the product for some reason. Try tapping the product to see if the dust can be knocked off.

#### Q9: Why is the image so blurry when viewing?

A9: Check whether you adjusted the microscope to the best viewing distance? You can adjust the focal distance by slowly turning the focusing wheel left and right to achieve maximum clarity.

#### Q10: What if the device halts?

A10: Press the power button and the Zoom button at the same time to restart the device.

- EN12 -

#### Q11: The microscope is connected to the PC, and there is no image after successfully downloading and opening the software.

A11.1: Reconnect the microscope to the PC.

2. Check whether the PC mode is correctly entered.

3. Check whether the battery has low power alarm.

4. Whether the data cable is used correctly.

A11.2: Reconnect the microscope to the PC.

2. Check whether the PC mode is correctly entered.

3. Check whether the battery has low power alarm.

4. Whether the data cable is used correctly.

Q13: When connecting to WiFi of the product, the network refuses to join.

A13: Confirm whether there are other smartphones connected to the WiFi of the product around you, and then restart and connect again.

Q14: App has no image when connected to product WIFI.

A14: a. iOS

1. Go to the smartphone settings, find "MAXVIEW", click to enter, find the local network, open it, and return to the APP. Reconnect to use.

b. Android

1. Go to the smartphone settings, find "MAXVIEW", click to enter, find the local network, open it, and return to the APP. Reconnect to use.

2. If the smartphone is connected to the WiFi, a pop-up window is displayed indicating that the Internet cannot be accessed through this network. Please select Yes to continue the connection.

- EN13 -

### Technical Parameters

Pixel	2 million pixels
Magnification	50-1000X
Picture resolution	1920*1080P
Video resolution	1280*720P
Focal distance	Manual focus(2~60mm)
WiFi connection distance	10m(opening conditions)
Picture format	JPG
Video format	MP4/AVI
Dynamic frame rate	20-30 f / s
Supportive system	Android 6.0, IOS9.0, Windows vista/7/8/10, Mac OS X 11.0 above
Battery capacity	800 mA
Elapsed time	About 1.5 hours
Charging time	About 1.5 hours
Charging indicator lights	Steady red: The battery is being charged Flashing red:low battery Steady green: Charging is complete

- EN14 -

### Technical Parameters

Pixel	2 million pixels
Magnification	50-1000X
Picture resolution	1920*1080P
Video resolution	1280*720P
Focal distance	Manual focus(2~60mm)
WiFi connection distance	10m(opening conditions)
Picture format	JPG
Video format	MP4/AVI
Dynamic frame rate	20-30 f / s
Supportive system	Android 6.0, IOS9.0, Windows vista/7/8/10, Mac OS X 11.0 above
Battery capacity	800 mA
Elapsed time	About 1.5 hours
Charging time	About 1.5 hours
Charging indicator lights	Steady red: The battery is being charged Flashing red:low battery Steady green: Charging is complete

- EN14 -

