

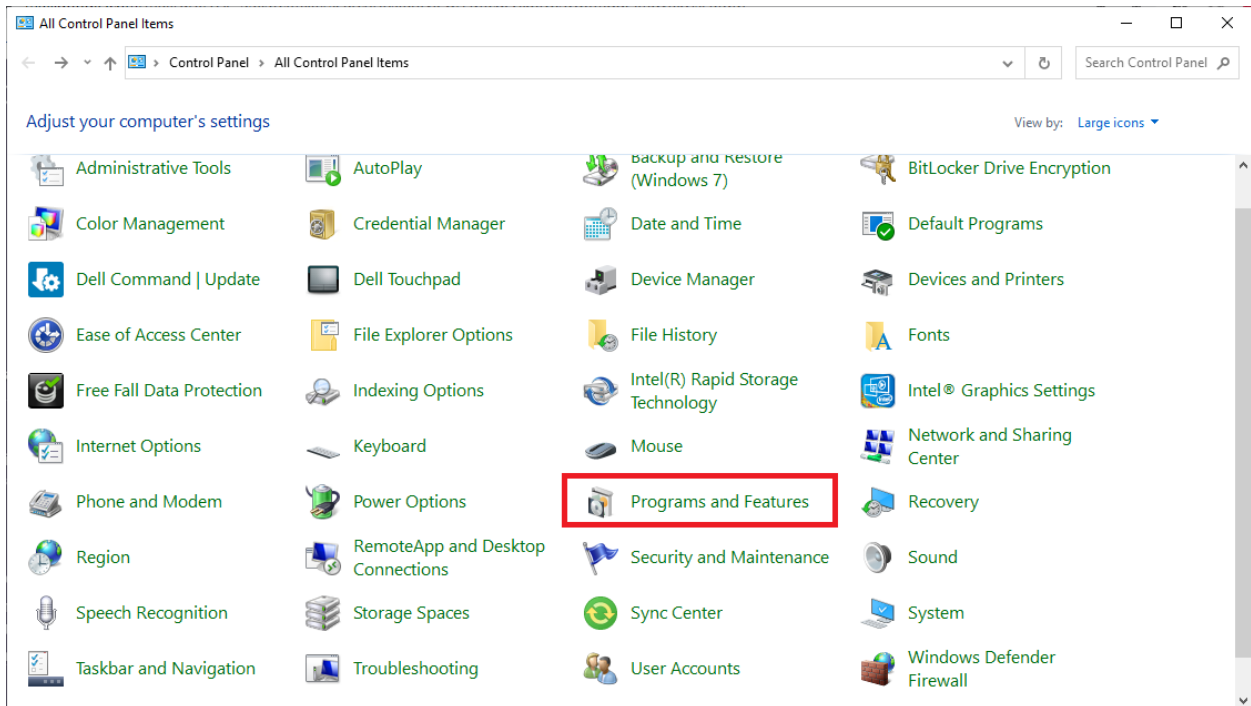
Accell InstantView Docking Station Driver Installation/Troubleshoot Guide

For users who are experiencing issues initializing Instantview applications, please refer to the installation guide below:

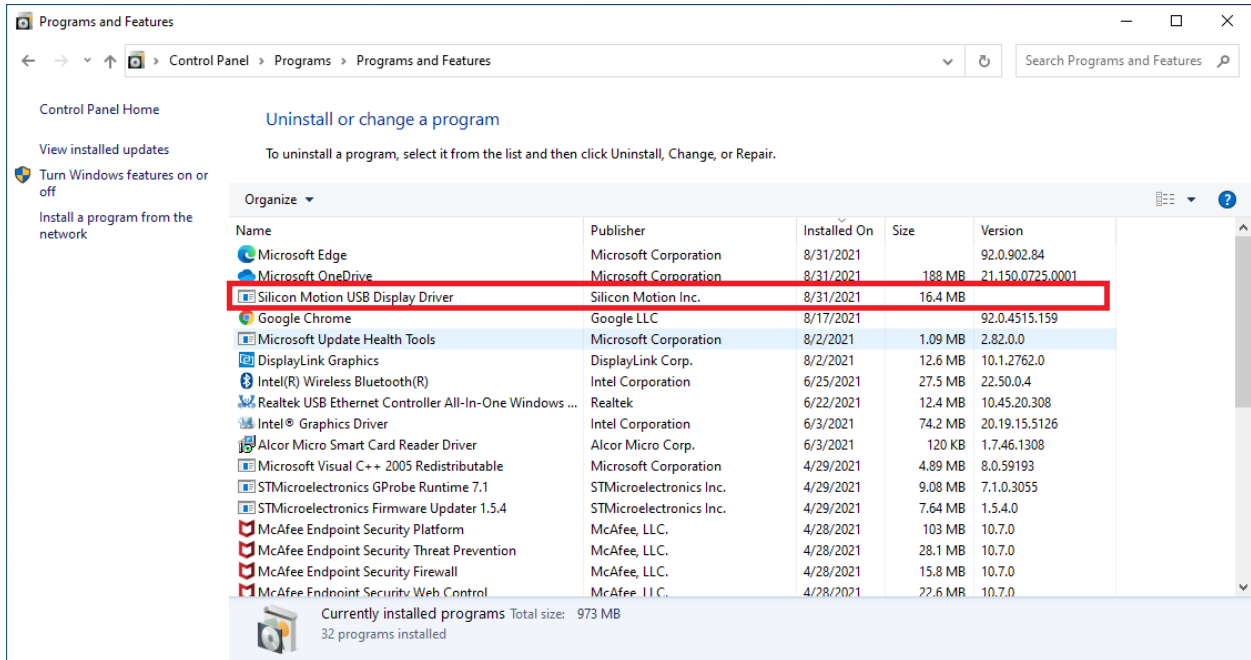
- [Microsoft Windows](#)
- [macOS](#)

Microsoft Windows:

1. Unplug the docking station from your computer.
2. Open the “Control Panel” folder and find “Programs and Features”:



- Find the “Silicon Motion USB Display Driver”, double click to uninstall it. (If the driver cannot be found or this is the first time use, please go to the next step)



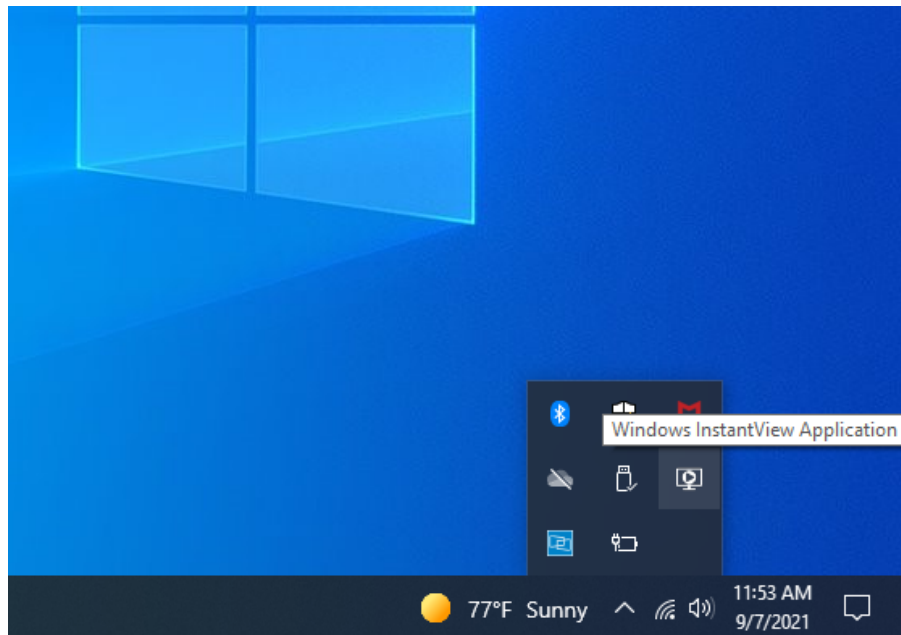
- Go to <https://www.siliconmotion.com/downloads/> to download the latest version of InstantView driver for Windows:

SM76x Driver Download

Windows			
OS Description	Version	Release Date	Download
Windows 7,8,1 and 10 32-bit and 64-bit Driver	V2.7 R08	Aug 31, 2021	

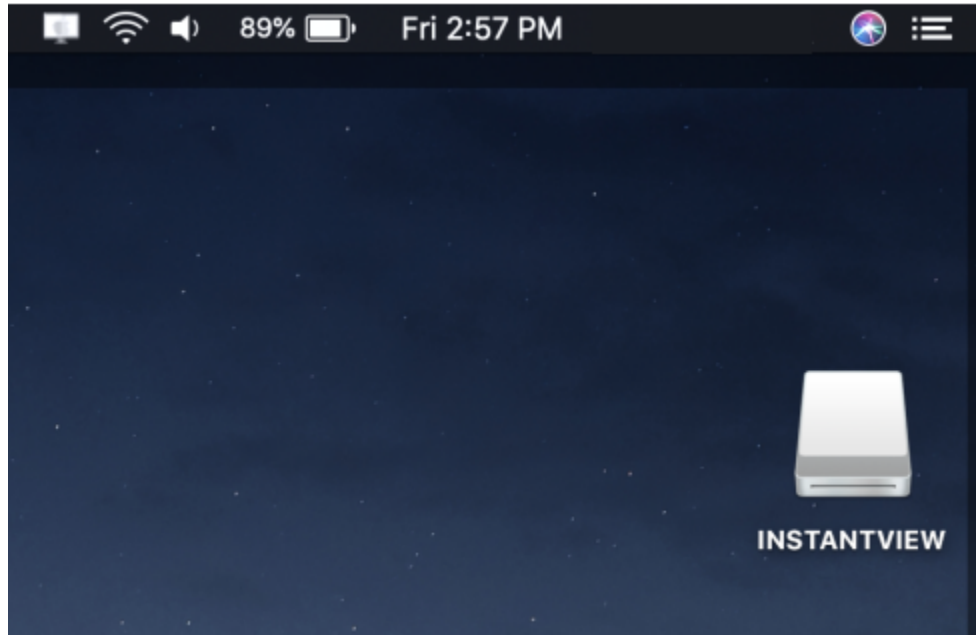
macOS			
OS Description	Version	Release Date	Download
Recommended: InstantView display application with UI. Support macOS 11 Big Sur, 10.15 Catalina including Apple M1 MacBooks	V2.7 R06	Aug 31, 2021	
Legacy Display Driver for macOS 10.15 Catalina, 10.14 Mojave and 10.13 High Sierra	V2.2.16.0	Jun 3, 2021	

5. Run the downloaded file and follow the prompted instructions to install the driver.
6. Plug the docking station to your computer. You may now be able to extend/mirror your connected external monitors through either InstantView UI or Windows display settings. You may verify the Instantview application is installed correctly by going to the taskbar on your desktop.

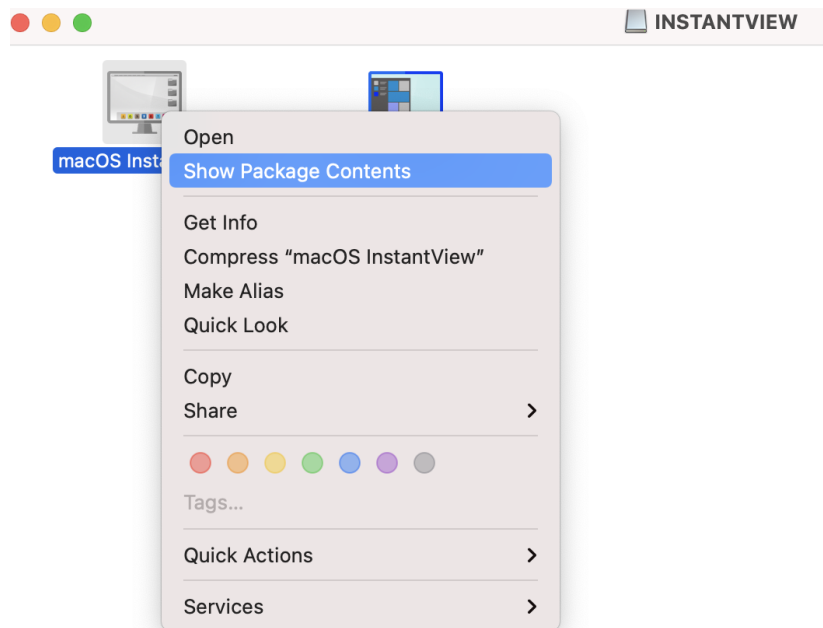


macOS InstantView:

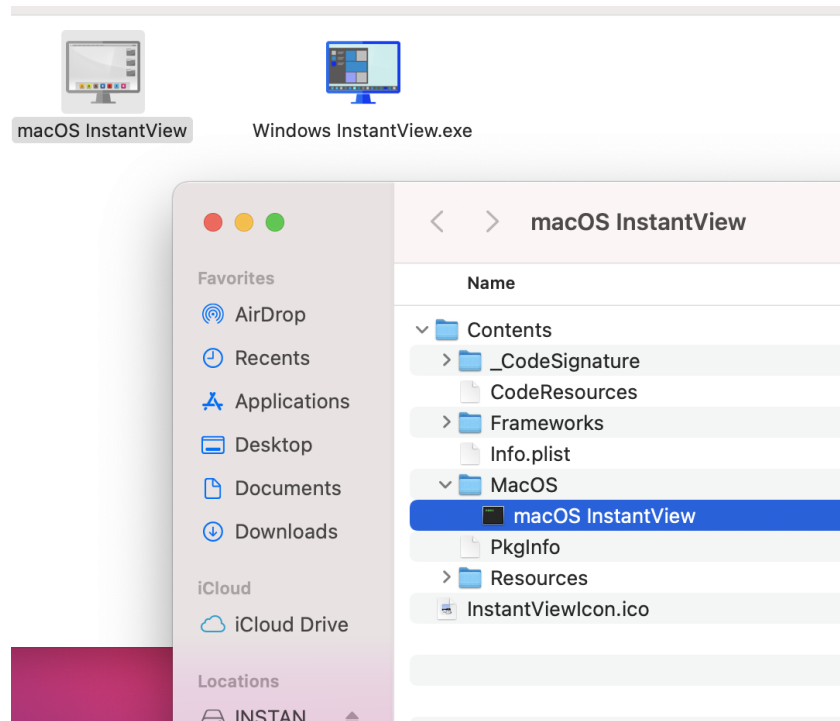
1. Plug in the docking station and open the “InstantView” folder from your home screen:



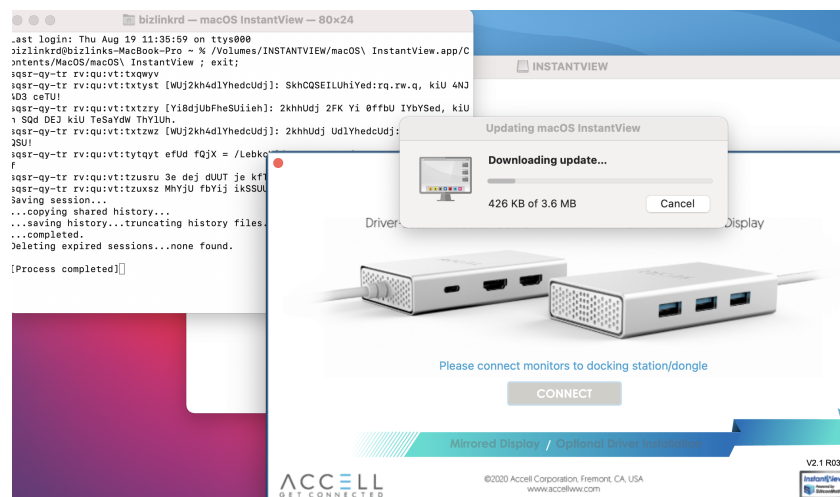
2. Right click on the “macOS InstantView” application and select “Show Package Contents”:



3. Go to “Contents” -> “MacOS” -> “macOS InstantView”:



4. Run the “macOS InstantView”. A terminal window will appear and perform a clean reboot. You may close the terminal window as soon as you see the “Process completed” prompt.



5. You should now be able to extend your external monitors.