

MUNBYN

ITPP047 Thermal Printer Software Manual

0.10

Document Name:

ITPP047 Software Manual-0.10.docx

	Name	Signature	Date
Prepared by:	Byron Zhong		
Reviewed by:			
Approved by:			

Version History

Date	By	Changes	Version
2020-12-5	Ace	<ul style="list-style-type: none">• Initial Draft	0.01
2020-12-22	Ace	<ul style="list-style-type: none">• Adding Wifi pictures	0.05
2020-12-23	Ace	<ul style="list-style-type: none">• Windows Wifi Setting steps and Loyverse Settings	0.06
2020-12-24	Ace	<ul style="list-style-type: none">• Mac USB installation and IP Address	0.07
2020-12-29	Ace	<ul style="list-style-type: none">• Bluetooth connection and chapter layout polishing	0.08
2020-12-30	Ace	<ul style="list-style-type: none">• Overall layout, polish	0.09
2020-12-31	Ace	<ul style="list-style-type: none">• Overall layout, polish	0.10
2021-1-5	Byron	<ul style="list-style-type: none">• Fixed the format• Fixed the typing mistakes	0.11

Contents

Version History.....	2
1.0. Get Started.....	4
2.0. Installation.....	5
2.1. USB installation.....	5
2.1.1. Windows Installation.....	5
2.1.2. Windows test page.....	9
2.1.3. Mac installation.....	12
2.0 Linux Installation.....	15
3.0. LAN installation.....	18
3.1. For Windows:.....	18
3.1.1. Get IP Address.....	18
3.1.2. Installation:.....	19
4.0. WiFi Installation.....	23
4.1. For Mac:.....	23
4.1.1. Get IP information.....	23
4.1.2. Connection.....	24
4.2. For Widows.....	26
4.2.1. Get IP information:.....	26
4.2.2. "Printer Test V5.0C" Settings.....	26
4.3. Loyverse test(Android or IOS).....	28
5.0. Bluetooth connection.....	30
5.1. For Windows 10.....	30
6.0. Uninstallation/ Delete printer.....	33
7.0. Configuration.....	34
7.1. For Windows:.....	34
7.1.1. "Printer Test V5.0".....	34
7.1.2. Printer Settings.....	39

1.0. Get Started

ITPP047 supports the following operating systems.

■ Windows:

- Windows 10 * 32-bit and 64-bit (except Windows 10 Mobile and Windows 10 IoT Core)
- Windows 8.1 * 32-bit and 64-bit (except WindowsRT 8.1)
- Windows 8 * 32-bit and 64-bit (except WindowsRT)
- Windows 7 32-bit and 64-bit

■ Mac:

- Mac OS X Lion – 10.7, Mac OS X Mountain Lion – 10.8 , Mac OS X Mavericks – 10.9,
- Mac OS X Yosemite – 10.10, Mac OS X El Capitan – 10.11, Mac OS Sierra – 10.12
- Mac OS Sierra – 10.12.6, Mac OS High Sierra 10.13, MacOS Mojave 10.14
- Mac OS Catalina 10.15, MacOS Catalina – 10.15.6, Mac OS Big Sur 11.0,

■ Linux:

- CentOS: up to CentOS 8.2.2004
- Ubuntu: up to Ubuntu 20.10

Tips: A Linux system based on CUPS printing is required, and the CUPS version is above 1.5.4

■ Precautions for System upgrade/update

- Before starting the System upgrade or update, it is recommended to turn off your printer.

2.0. Installation

To use the ITPP047 in a Windows environment, you need to install this printer driver in advance.

2.1. USB installation

Tips:

- a) Make sure the printer is connected to your Windows computer by the attached USB cable and power on.
- b) The following are the simulated installation steps, the operating system used is Windows 7, on the basis of actual installation interface (System).

2.1.1. Windows Installation

Driver download link: <https://munbyn.biz/ITPP047—Driver>

- 1) Unzip the file and open it.

Driver CD	2020/12/24 15:53
ITPP047 Driver	2020/12/22 16:25

- 2) Open the file "Driver".

Android Example	2020/12/24 15:53
Driver	2020/12/24 15:53
Manual	2020/12/24 15:53
NETtool	2020/12/24 15:53
PDF Reader	2020/12/24 15:53
Tools	2020/12/24 15:53
Gift for you	2020/3/14 18:17

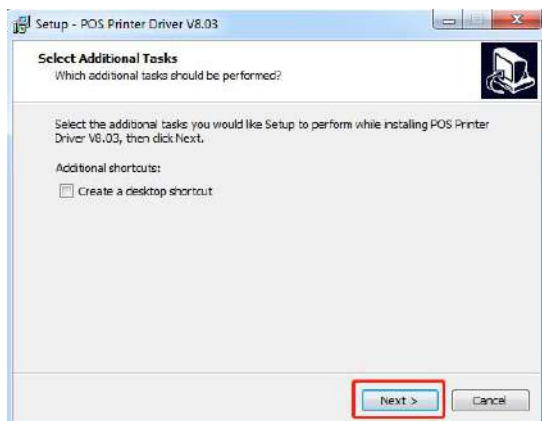
- 3) Open the file "Windows Driver".

Linux Driver	2020/12/24 15:53
Mac driver	2020/12/24 15:53
Virtual com driver	2020/12/24 15:53
Windows Driver	2020/12/24 15:53

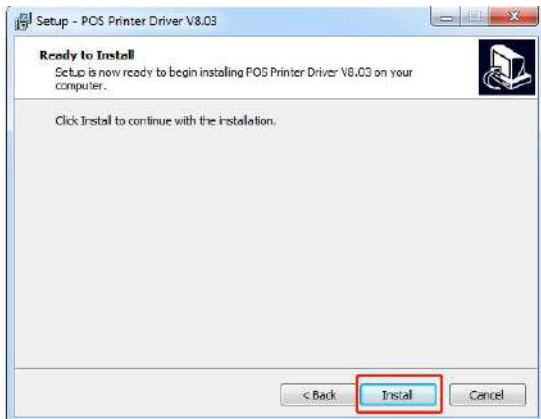
- 4) Open the "POS Printer Driver V8.03" exe.

POS Printer Driver V8.03	2017/8/28 16:58
--------------------------	-----------------

- 5) When the following window appears, click on the "Next".



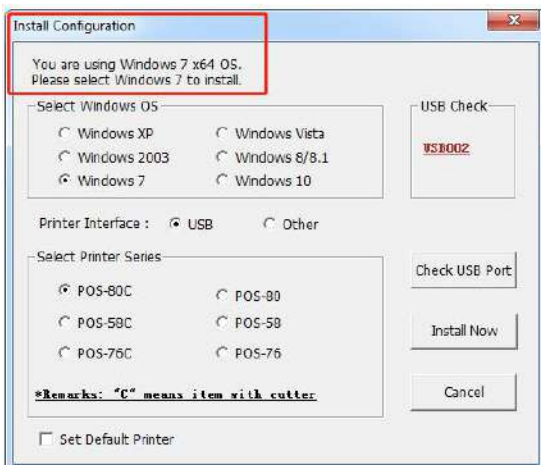
6) When the following window appears, click on the "Install".



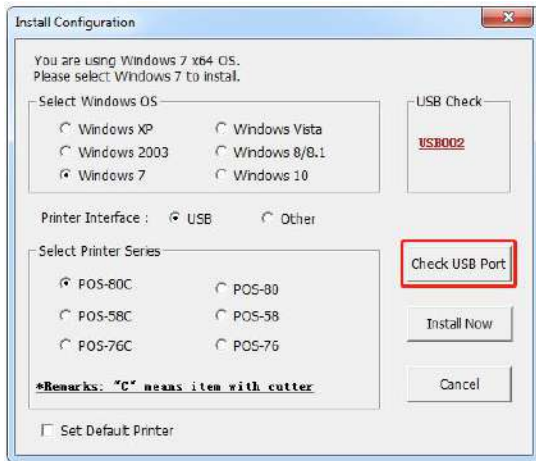
7) Wait for the progress bar to end and the following window will appear, click on the " Finish".



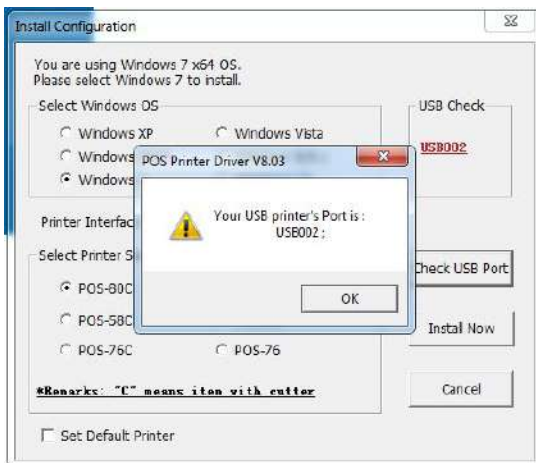
8) Another installation window will pop up automatically, and the driver will automatically detect your computer system, not need change anything.



9) Click on the "Check the USB port" .



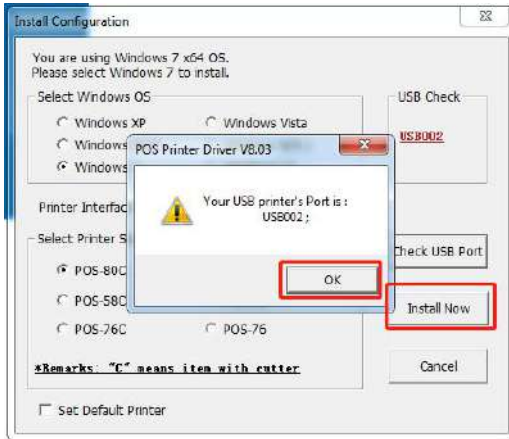
10) A USB port window will automatically pop up.



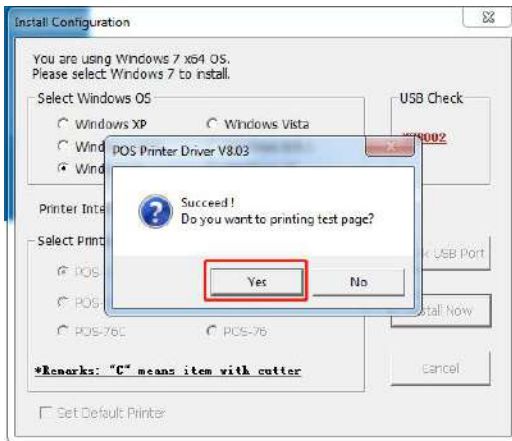
11) The printer will automatically feed out a USB port detection ticket.



12) Click on the "OK" and "Install now".



13) A Succeed windows will automatically pop up and then click on the "OK".

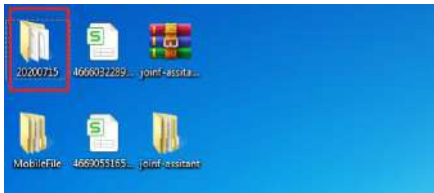


14) The printer will automatically feed out a "POS Printer" test page.



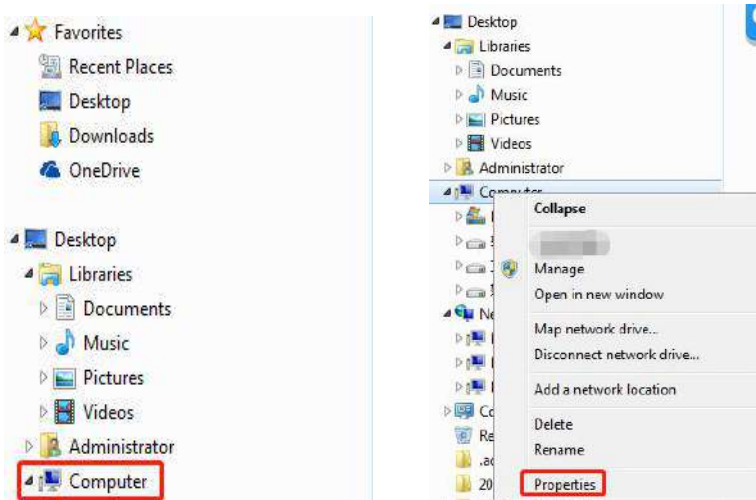
2.1.2. Windows test page

1) Open any file on your desktop (example only).

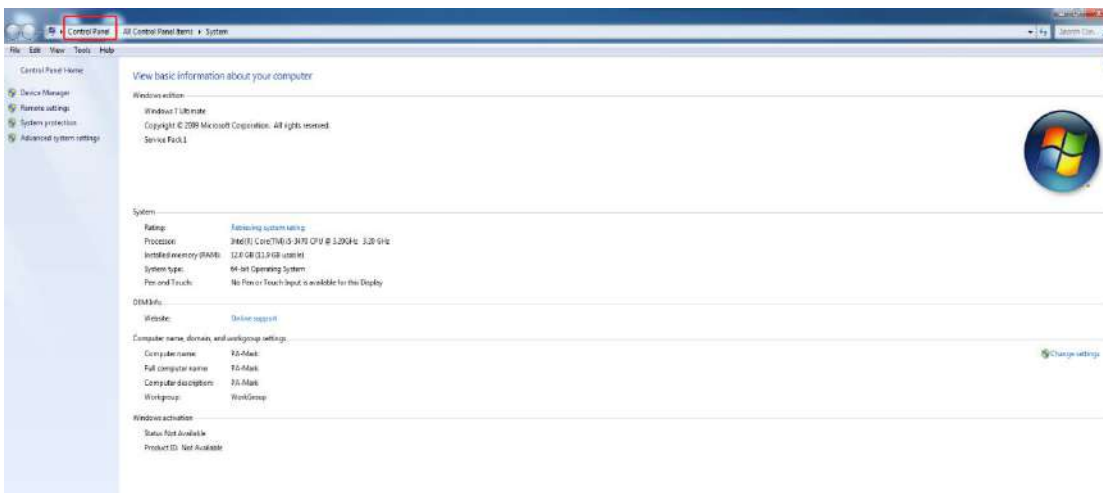


2) Find "Computer(is the name of your personal computer)" on the left (names may vary, subject to actual conditions).

Right click on the "Computer", click on the "Properties".



3) Enter the system details interface, click on the "Control Panel" at the top of the page.



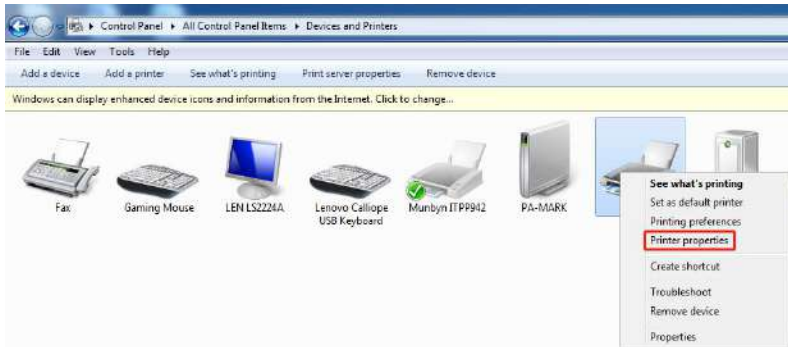
4) Click on the "View devices and printers".



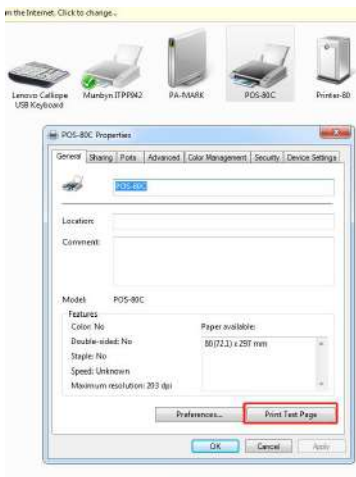
5) Enter the Devices and Printers interface, right click on the "POS-80C".



6) Click on the "Printer Properties".



7) Click on the "Print Test page".



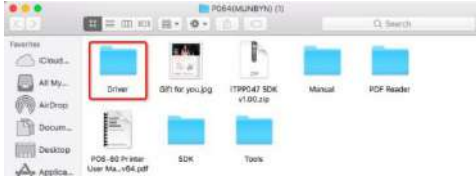
2.1.3. Mac installation

To use the ITPP047 in a Mac environment, you need to install this printer driver in advance.

1) Open the file "P064 MUNBYN".



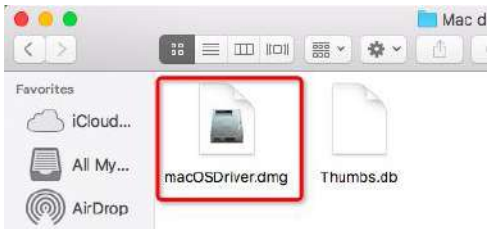
2) Open the file "Driver".



3) Open the file "Mac Driver".



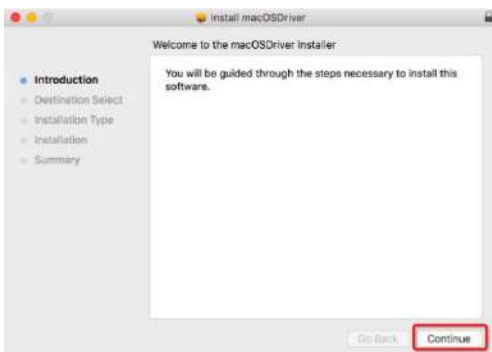
4) Open the "macOSDriver" dmg file.



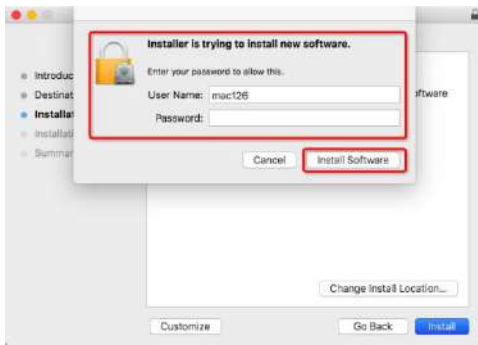
5) Choose the "macOSDriver_signed. pkg " file and the installation will get started.



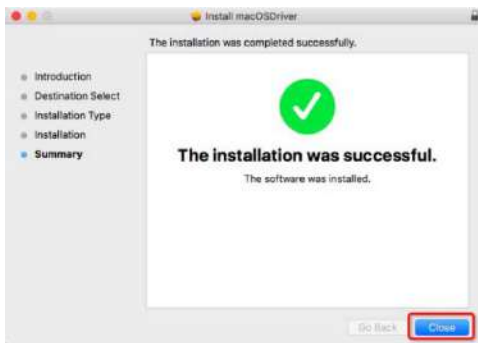
6) Follow the instruction and click on the "Continue" again and again.



7) Enter your MAC's password for the new driver installation and click "install Software".



8) Wait for a second and click on the "Close".



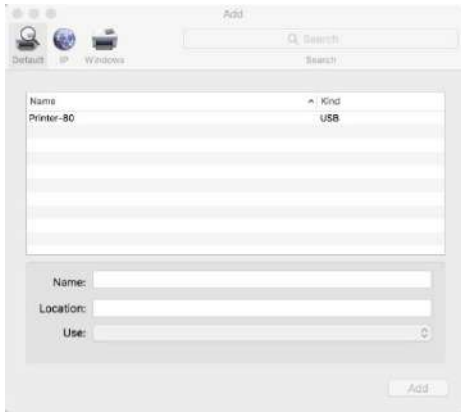
9) Go to the "System and Preferences" and chose the "Printers & Scanners"



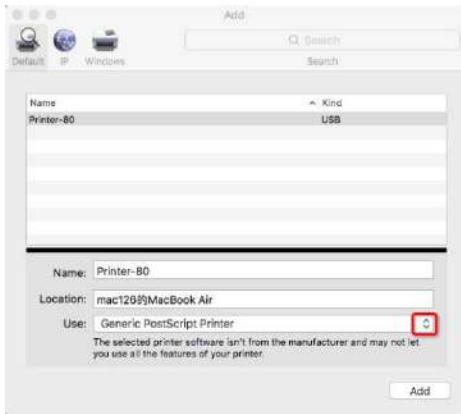
10) Click on the "+" to add the new printer



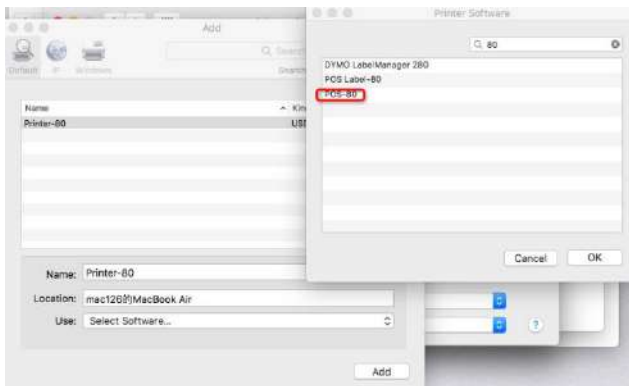
11) A "Printer-80" window will pop up automatically.



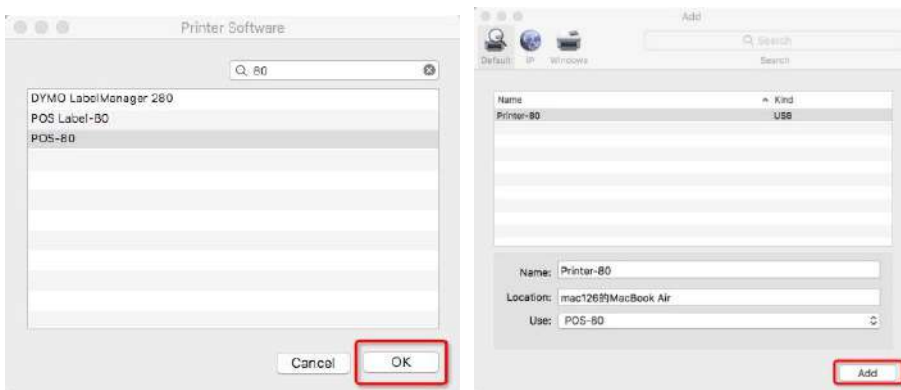
12) Wait for a few seconds and the details will show up and then change the "Use" option.



13) Choose Select Software, search "80" and then choose "POS-80".

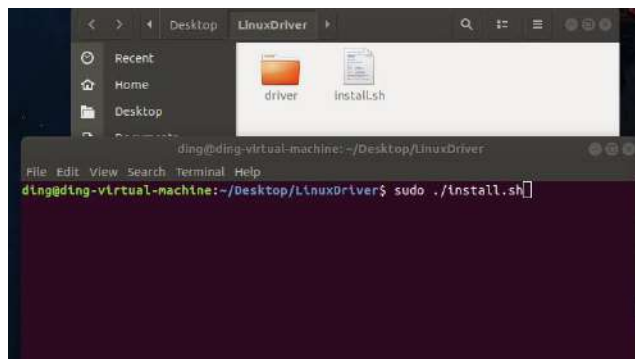
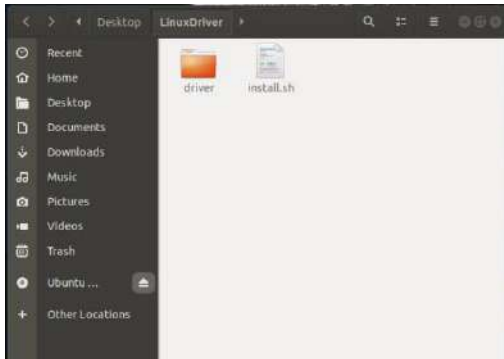


14) Click on the "OK" and "Add" to add this new printer(POS-80C).

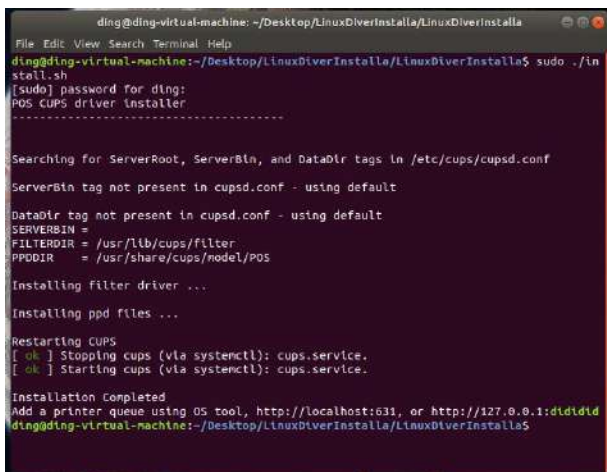


2.0 Linux Installation

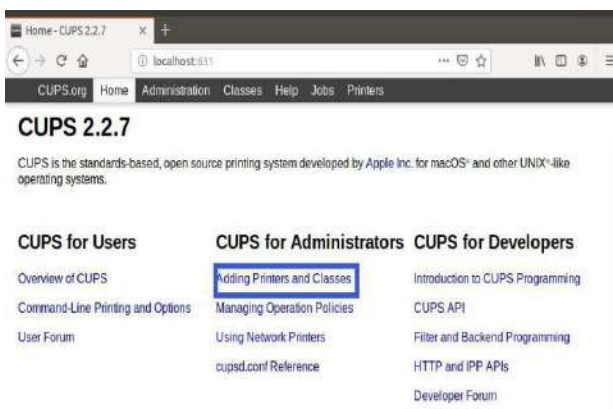
1) Open terminal input "sudo ./install.sh".



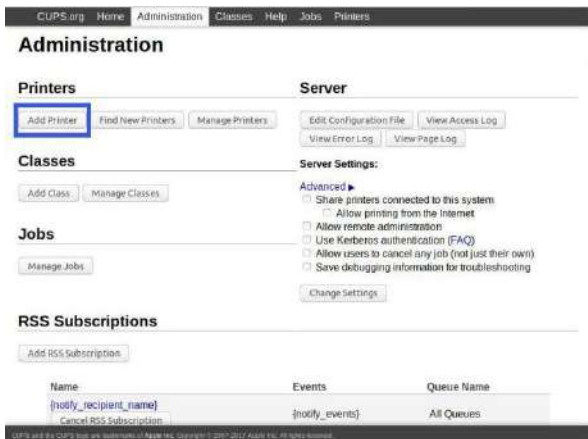
2) Input your root password. (If you have not root password, open terminal and input "sudo passwd root" to set root password).



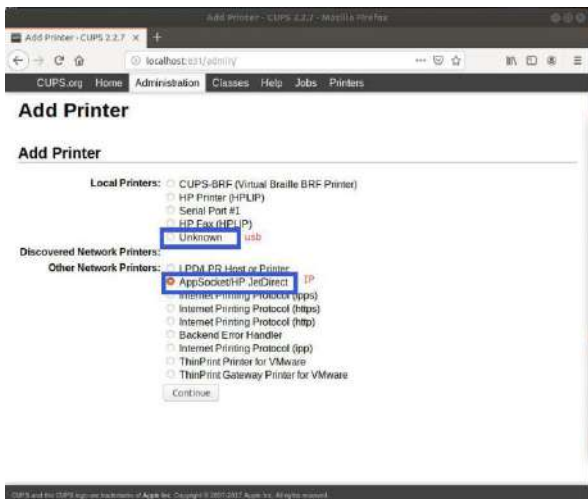
3) Open cups at localhost: 631 in your browser and choose "Adding Printers and Classes".



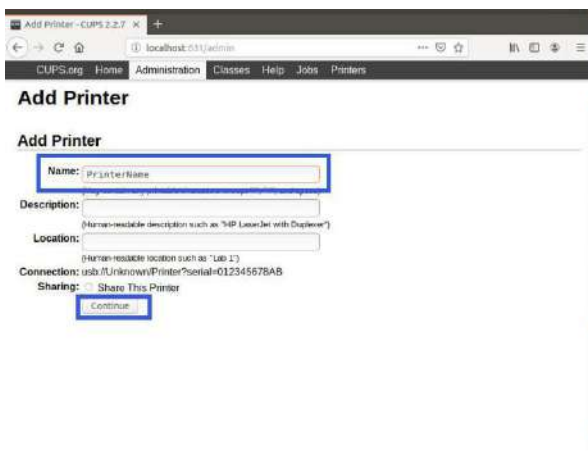
4) Click on the "Add Printer".



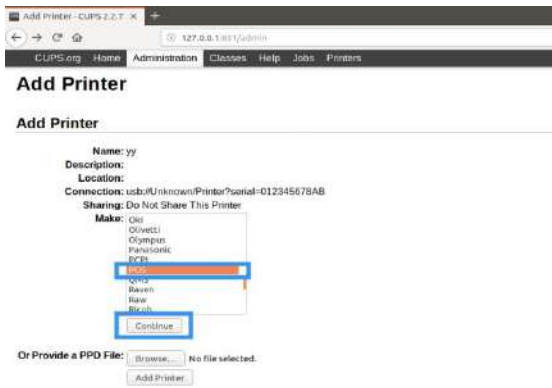
5) Choose "Unknown" and "AppSocket/HP JetDirect" and click on continue.



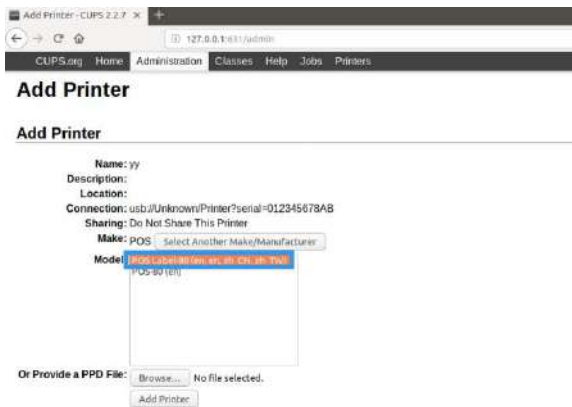
6) Enter "PrinterName"(Anyone is fine) and click on the "Continue".



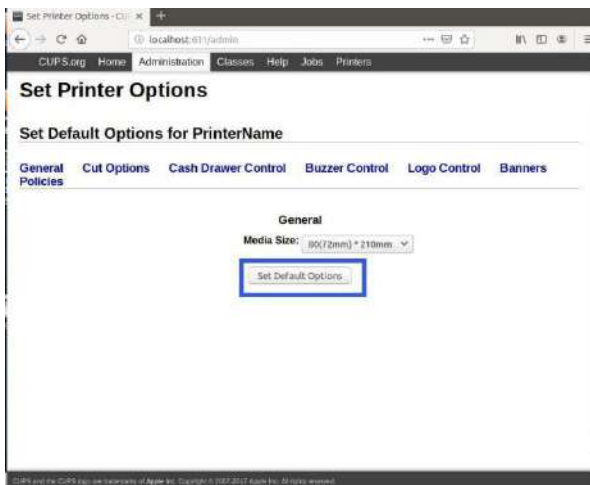
7) Choose "POS" and click on the "Continue".



8) Choose "POS Label-80" and click on the "Add Printer"



9) You can choose to further set as the default printer.



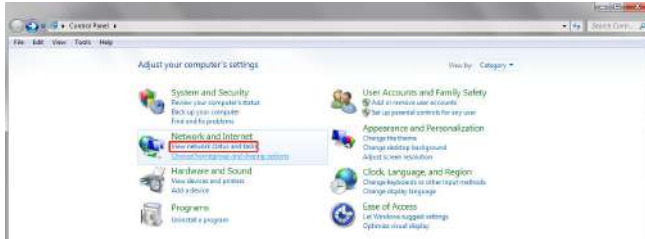
10) The printer has been successfully installed.

3.0. LAN installation

3.1. For Windows:

3.1.1. Get IP Address

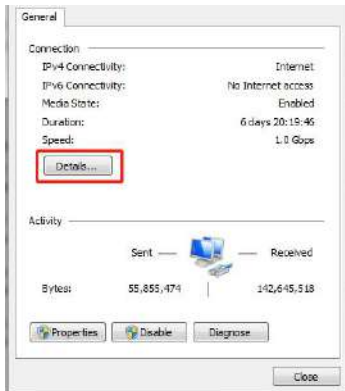
a) Go to control panel(Please refer to chapter 1.1.2), and click "View network status and tasks"



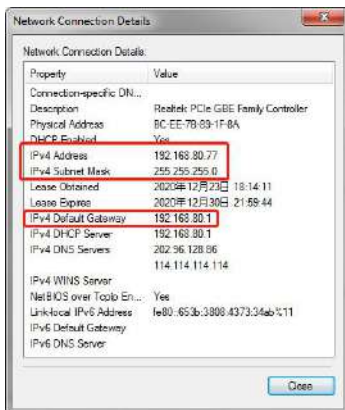
b) Click on the "Local connection"



c) You can see the basic information of the network connection, click on the "Details".



d) IPv4 address is the local IP.



Tips:

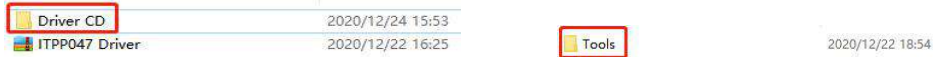
Install the USB driver, please refer to chapter 1.1.1.

Prepare a router, three network cables, the first one is the access network to connect to the router, the second one connected to the computer, and the other one connected to the printer

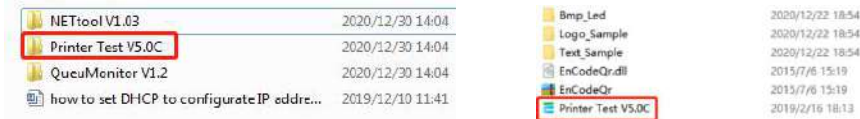
3.1.2. Installation:

3.1.2.1. "Printer Test V5.0" Settings

1) Open "Printer CD" and "Tools".



2) Open "Printer Test V5.0C".

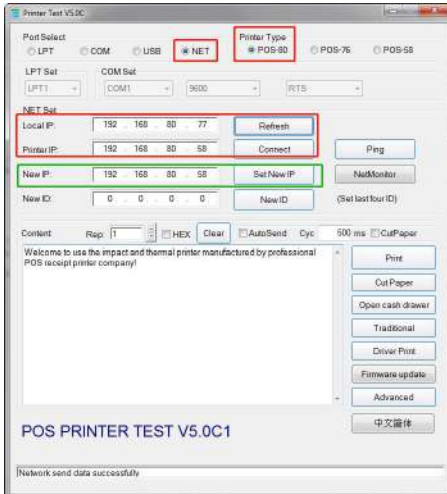


3) Check the PortSelect and Printer Type. Enter the Local IP, Printer IP.

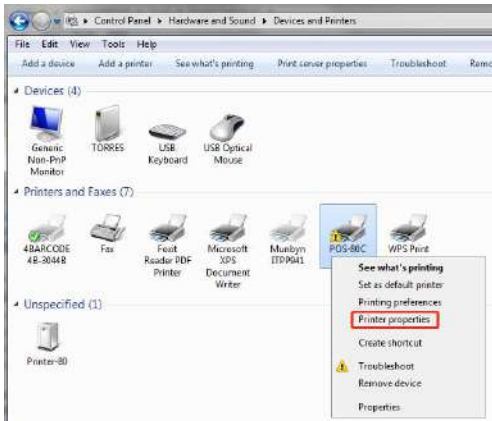
You can get the printer IP(IP address) by the Selftest page(Please refer to the Hardware Manual).

Enter the New IP, The first three digits are consistent with Local IP, and the last digit is different from the last digit of Local IP (usually greater than).

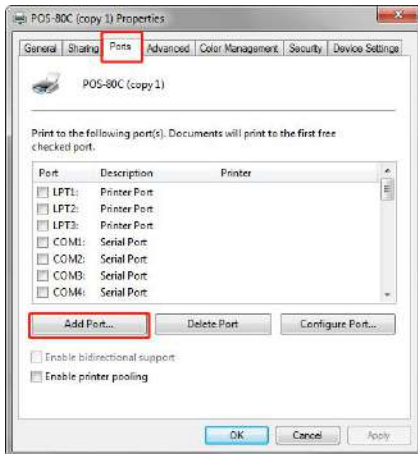
Click on the "Set New IP" after finishing.



4) Go to the Control Panel and Click on the "Printer properties".



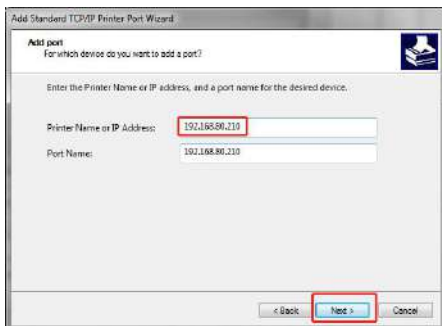
5) Click on the "Ports" and then "Add Port".



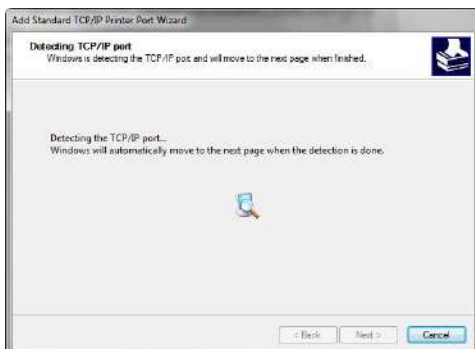
6) Choose "Standard TCP/IP Port" and click on the "New Port".



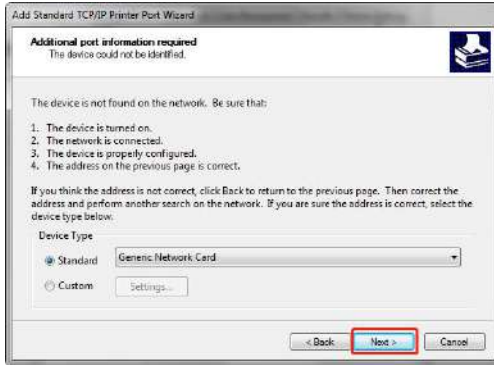
7) Enter the new IP set before and click on the "Next".



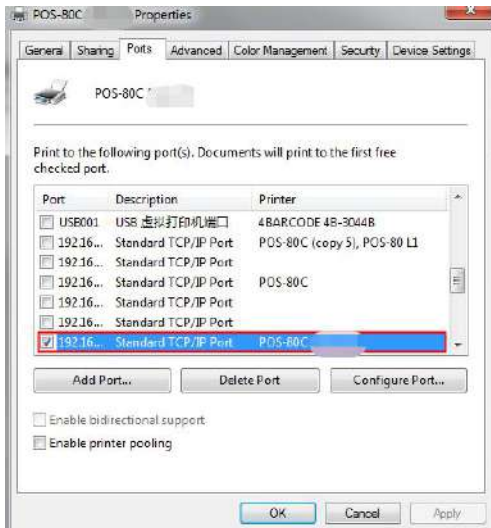
8) Please wait for the detecting.



9) Click on the "Next" and "Finish"



10) Go back to the "Ports" and double check the TCP/IP Port is chosen or not.



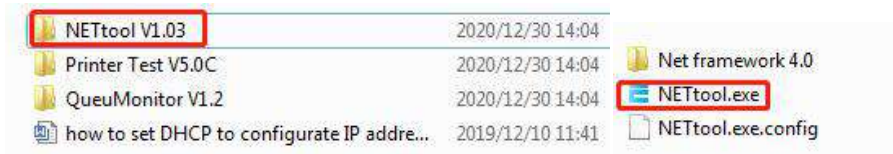
11) Please refer to the chapter 2.1.2 and do a test page.

3.1.2.2. DHCP method:

1) Open "Printer CD" and "Tools"

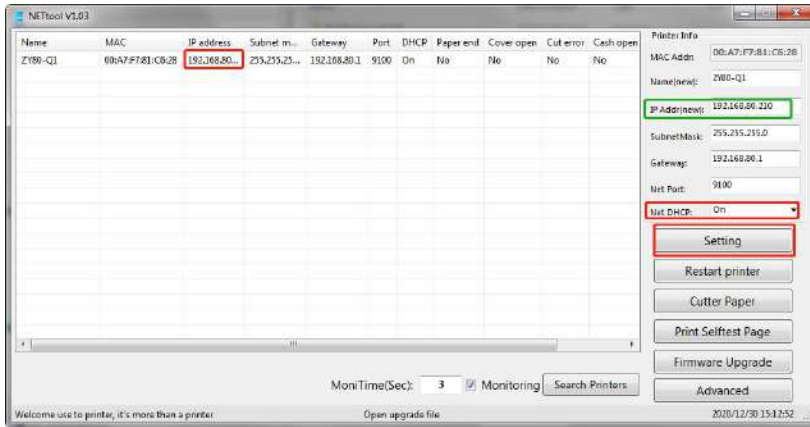


2) Open NETtool V1.03->NETtool



3) Click on the IP "192..." , switch the DHCP on, and click on the "Setting".

A new IP address will come out automatically



4.0. WiFi Installation

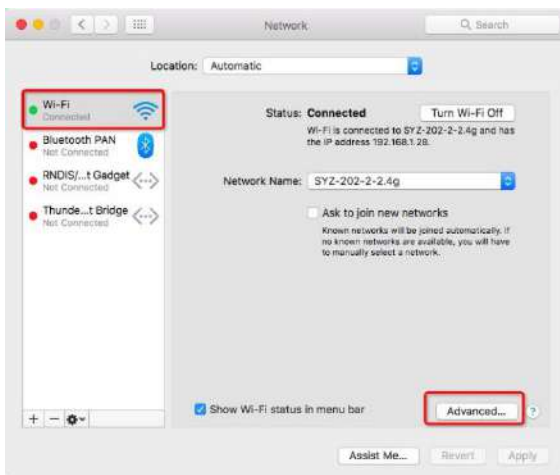
4.1. For Mac:

4.1.1. Get IP information

a) Go to "System Preference" and click on the "NetWork".



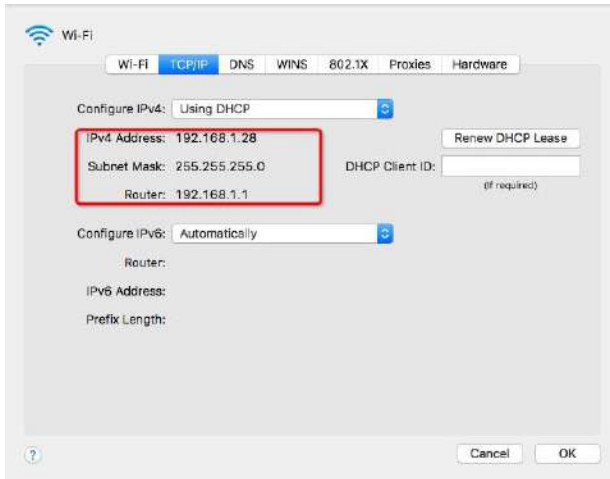
b) Double-check your Wifi connection and click "Advance".



c) Click on the "TCP/IP".



d) Double check the IP details.

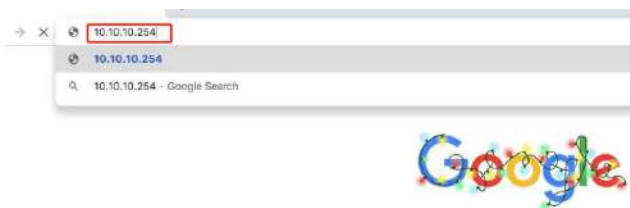


4.1.2. Connection

1) Connect "Wifi Printer".



2) Open a browser and enter "10.10.10.254".



3) Enter "admin"(Username and Password).

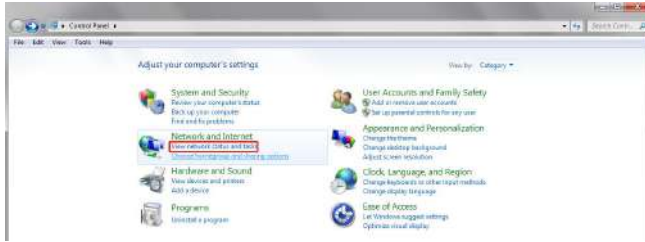


4) Click on the "STA Settings".

4.2. For Widows

4.2.1. Get IP information:

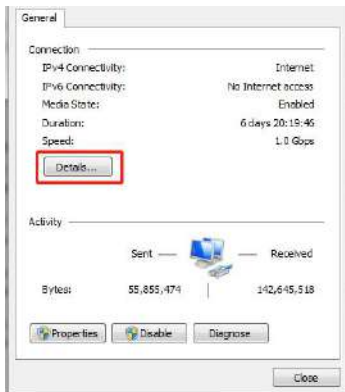
a) Go to control panel(Please refer to A), and click "View network status and tasks".



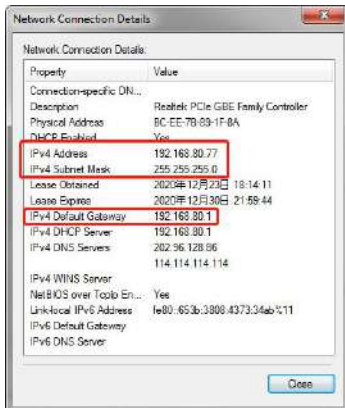
b)Click on the "Wifi connection".



c)You can see the basic information of the network connection, click on the "Details".



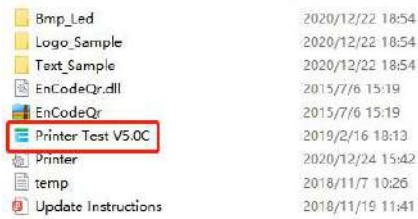
d)IPv4 address is the local IP.



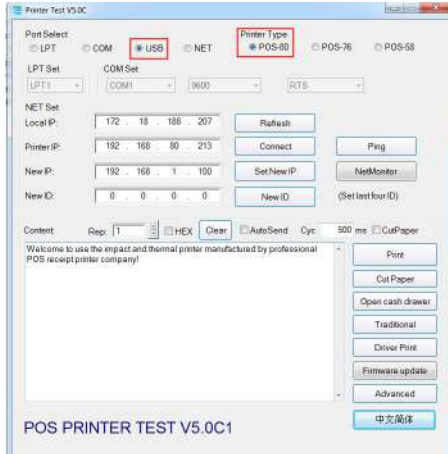
4.2.2. "Printer Test V5.0C" Settings

1) Open "Printer CD" and "Tools".

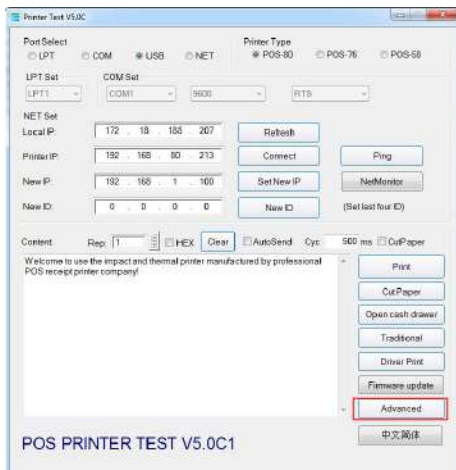
2) Open Printer Test V5.0C and make sure the printer is connected to a Windows computer by USB cable.



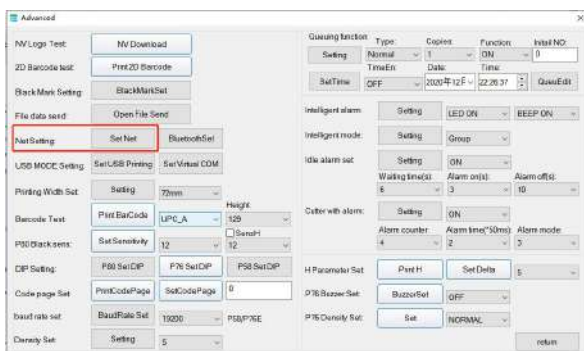
3) Check the "PortSelect" and "PrinterType".



4) Click on the "Advance".



5) Find "Net Setting" and click on the "Set Net".



6) Enter the IP Address, NetMask and GateWay (Refer to step d in the previous chapter), and then enter the Wifi name(SSID), password(WIFI Key). Click Setting All.



7) A WiFi ticket will pop up automatically that means the printer is successfully connected to the WIFI.



4.3. Loyverse test(Android or IOS).

Demo video: <https://munbyn.biz/ITPP047-W-L>

1) Setting as the below shown.



2) Click "PRINT TEST".



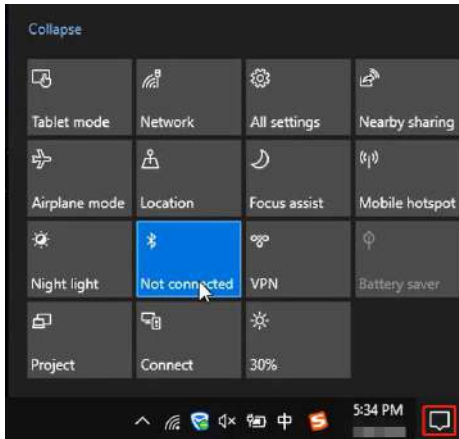
3) A Test receipt will pop up automatically that means Wifi setting is done.



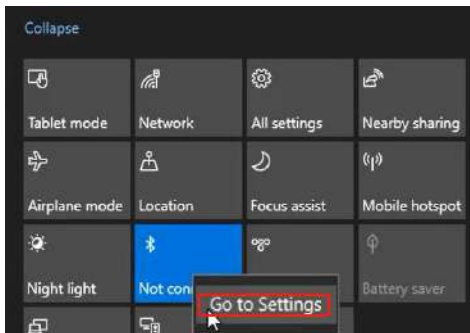
5.0. Bluetooth connection

5.1. For Windows 10

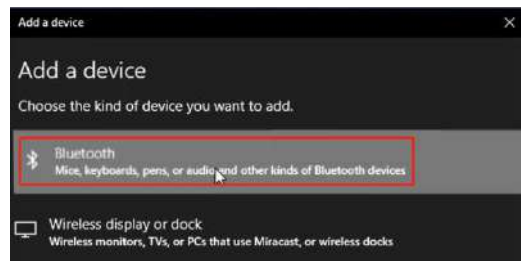
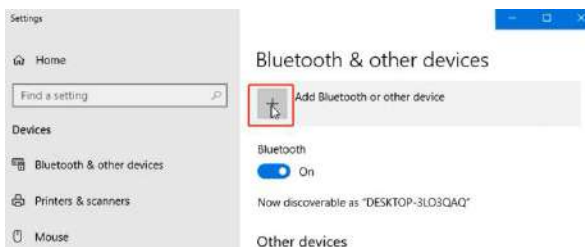
1) Click on the information icon in the lower right corner of the screen.



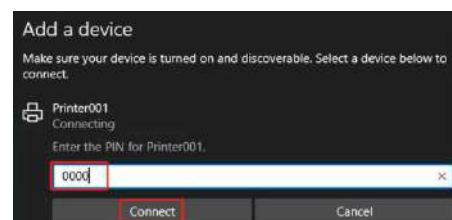
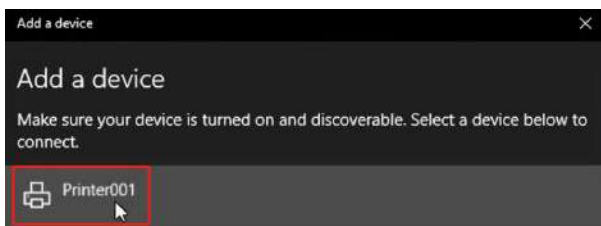
2) Right click on the the Bluetooth icon and go to Settings.

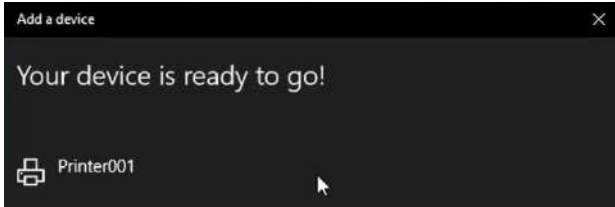


3) Click on the "+" and choose Bluetooth.

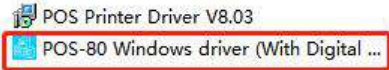


4) Choose "Printer001", enter the PIN code "0000".

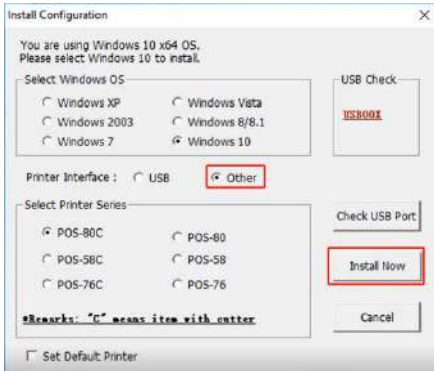




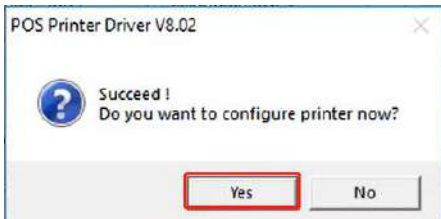
5) Go to the Driver file and click on the "POS-80 Windows driver(With..)".



6) Choose "Other" and click on the "Install Now".



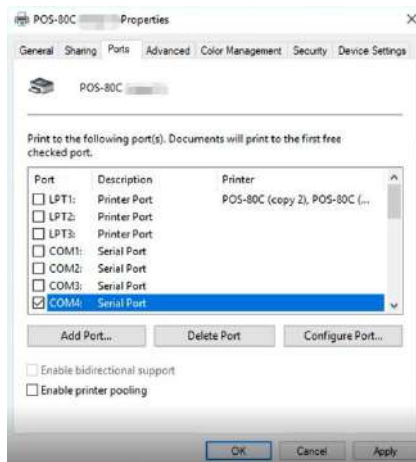
7) A succeed window will pop up automatically and click on the "Yes".



8) Go to the "Devices and Printers" , Doubl- Click on the "Printer001", and then click on the "Hardware", you can see the com port connected to the printer



9) Go back to the "Ports" and Select the com port.



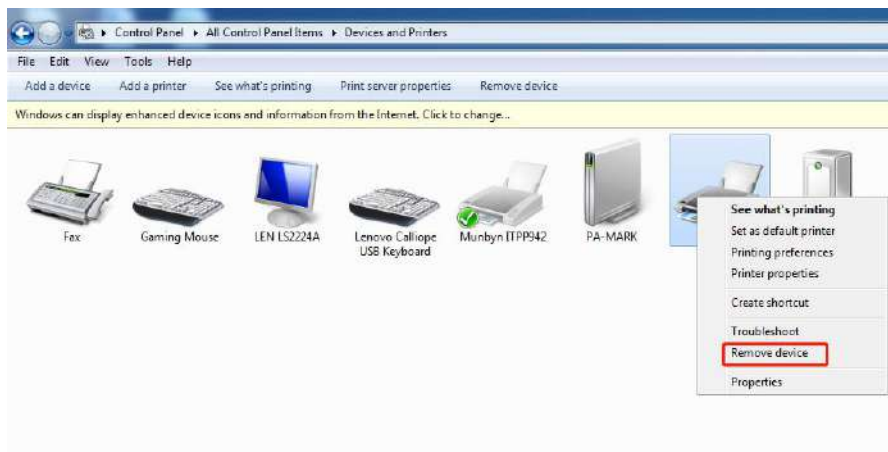
10) Refer to the chapter 2.1.2 and do a test page.

6.0. Uninstallation/ Delete printer

1) Go to the Control Panel and click on "View devices and printers".



2) Right click on the POS-80 and click on the Remove device.

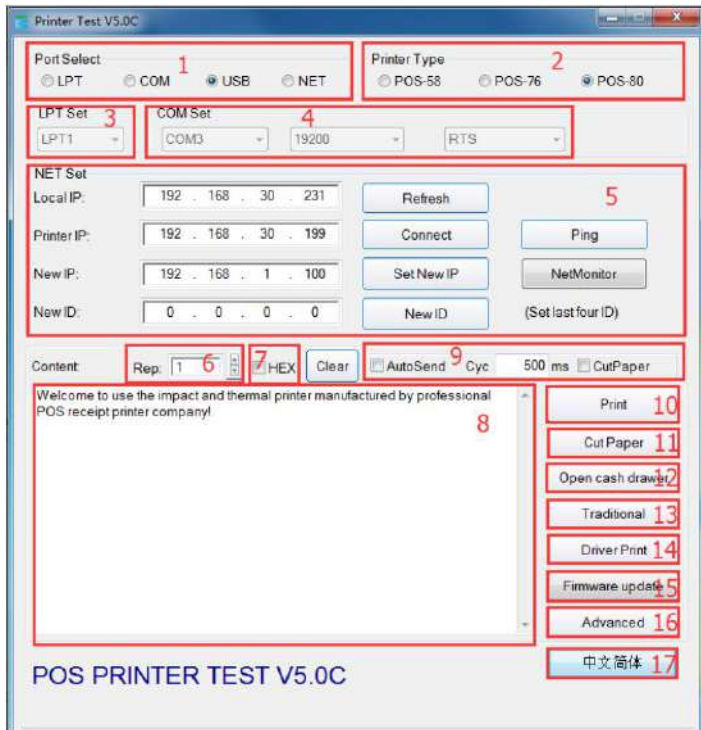


7.0. Configuration

7.1. For Windows:

7.1.1. "Printer Test V5.0"

7.1.1.1. Introduction of Main Interface



Tips: The numbers in the picture correspond to the points

1.Communication port selection: parallel port, serial port, USB port and Ethernet port.

2.Printer type: default is POS-80

3.Parallel port Settings (LPT Set): Parallel port Settings ---be consistent with the computer communication parallel port number.

4.Serial port Settings (COM Set): Serial port Settings --- set the serial port number, baud rate, flow control, etc.

5.Ethernet port Settings (NET Set):

Change the IP address of Ethernet port printer through Ethernet port Settings.

"Local IP"--- computer's local IP address which can be added automatically or by clicking "refresh" button.

"Printer IP"---printer's current IP address , its detailed information can be seen on self- test page, only suitable for Ethernet port printers.

"New IP address"--- set the new IP address

Notes: printer's IP address shall be in the same network segment as the connected computer's to realize intercommunication, And it can't conflict with the IP address of other devices.

"New ID address"--- the new ID address the printer' s ID address is to be changed to(Printer' s ID address must be an only address within a network).

"Net Monitor"---Monitor printer status through network.(NET port available)

6. Number of the copies: It refers to the printing quantity of the repeat print of the test content.

7. HEX Data can only be transmitted by inputting hexadecimal after having selected printing content. (It's mainly used to send instructions to the printer).

8. Printing content: Edit the printing content here, and send data by clicking "Print" button.

9. Automatically sending, cycle, paper cutting:

"Automatically sending"--- Click the "Auto Send" button and the software will automatically send the data in the printing content column to the printer.

"Cycle"--- cycle time to send data automatically

"Paper cutting"--- Printer will automatically do paper cutting work according to the cycle time after the "Auto Send " button and "cyc" button have been set.

10. Print: Print the information and data in the "content" edit box. 11.Paper cutting: Test the function of paper cutting action.

12. Open cash drawer: Test the cashbox function

13. Traditional font test: Used for testing traditional fonts printing

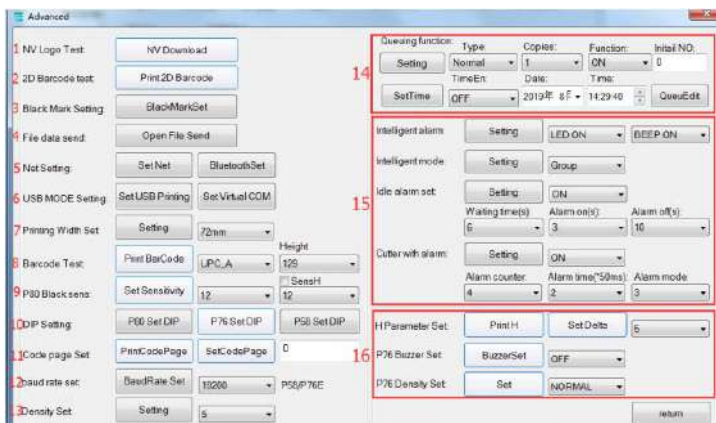
14. Driver print: Call the installed Windows driver to test print, printing out the information suggests successful installation

15. Firmware update: Choose firmware BIN file, when updating, two LED flickers on the printer at the same time, do not turn off printer power.

16. Advanced: Click "advanced" button, and set up more features to have print test, below is the detailed introduction.

17. It's for switching software interfaces between English and Chinese language

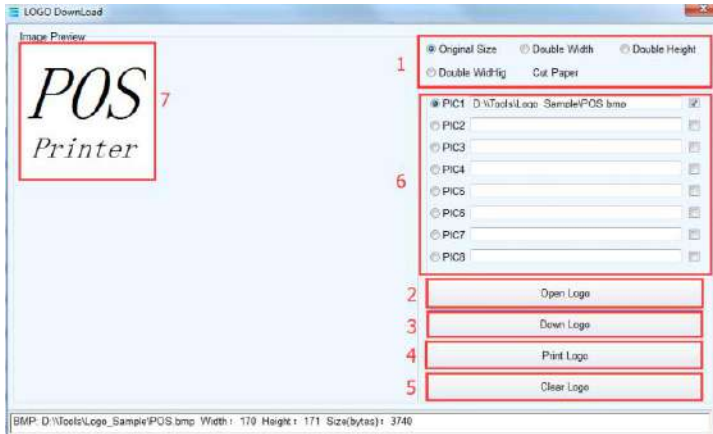
7.1.1.2. Setup instructions for "advanced" button



Tips: The numbers in the picture correspond to the points

1. NV Logo Test:

a) Click the "NV Download "button, the menu below will pop-up:



b) Size requirement and function selection of paper cutting of NV LOGO printing.

c) Open LOGO:

Click and select BMP format picture or the LOGO file that you want to print.

d) Download NV LOGO:

Click the download button after opening the BMP format file and the file will be downloaded to the printer. Print the file content by clicking "print LOGO" button.

e) Print LOGO:

Click this button to complete the LOGO image printing.

f) Clear LOGO:

Remove the downloaded NV LOGO.

g) Multi NV LOGO down.

h) Show current NV LOGO

2. " 2D barcode testing"

Edit and print test of two-dimension codes

3. "Black mark Settings"

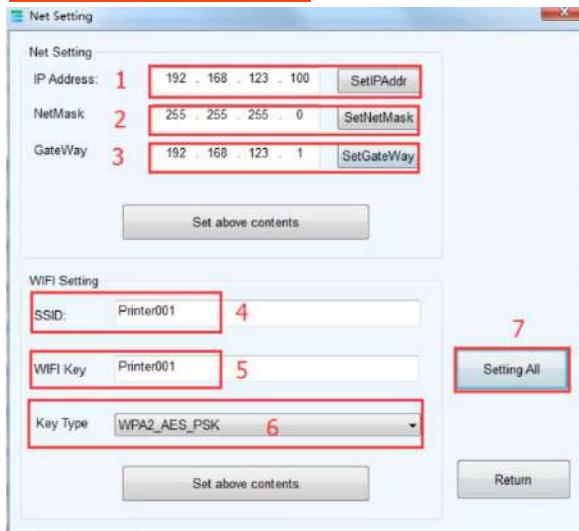
To set special paper printing with black mark.

4. "File data send"

Choose and open TXT format file in the pop-up dialog box, and then the printer will print the contents of the file.

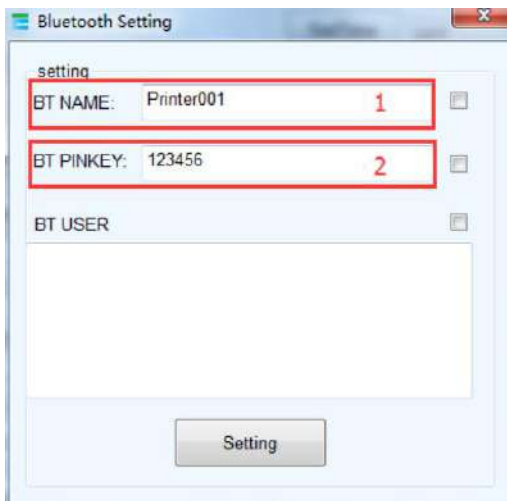
5. "Network Settings"

It includes "Network Settings" and "Bluetooth Settings"



A: Set Net(WIFI Settings):

- a) Set up the Printer's IP address.
- b) Set up the Subnet Mask.
- c) Set up the Gateway.
- d) WIFI SSID address settings. Note: the SSID address is the name of your Wireless Router's name.
- e) WIFI password settings. Note: the password of the Wireless Router
- f) Encryption type of WIFI SSID settings. Note: the encryption type of the Wireless Router. For example, if the encryption type of the Router (SSID) is: WPA_TKIP_AES_PSK, then this information should be selected in the tab of "SSID Encryption type".
- g) After filling the above information, click the "Setting All" option. The printer will "BEEP". Next, restart the printer.



B:BluetoothSet:

- a). Set up the Port name of the Bluetooth Printer (the Factory Default BT NAME is "Printer001")
- b) Set up the Password of the Bluetooth Printer (the Factory Default BT PINKEY is "123456")
- c) After finishing the above settings, click "Setting", and then finished the settings of Bluetooth printer Parameters.

6. "USB Mode Setting"

Mode Setting of printer's USB port includes USB Printing and Virtual COM. USB mode switches according to customer demand. For specific operation, refer to PDF file "Virtual COM setting" in CD

7. "Printing Width Set"

Change the printing width to 48/52/56/58/64/68/72/76/80mm

8. "Barcode test"

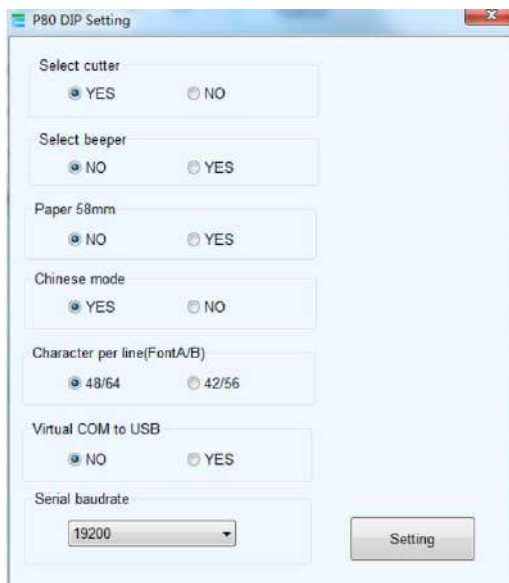
Choose a variety of barcode types and height to test the print with a total of nine kinds of one-dimensional code choice.

9. "P80 Black sens"

The adjustment of black mark sensitivity Settings for 80 series machines according to different black mark paper. Valid only when black mark function set is on.

10. "DIP switches Settings"

P80 Set DIP (only for machines without DIP switches on bottom)



11. "Code page set"

Typed in the code page number(all the code pages list in the self-test page), then click "SetCodePage" button. Click "PrintCodePage" button to view the setup code.

12. "Baud rate set"(only for P58 and P76E machines)

13. "Density Set" To adjust the printing effect, from 1 to 8.

14. "Queuing function"

Set the printer as a Queuing machine, refer to PDF file "Queuing function setting" in CD

15. "Kitchen function" (only for Kitchen printers)

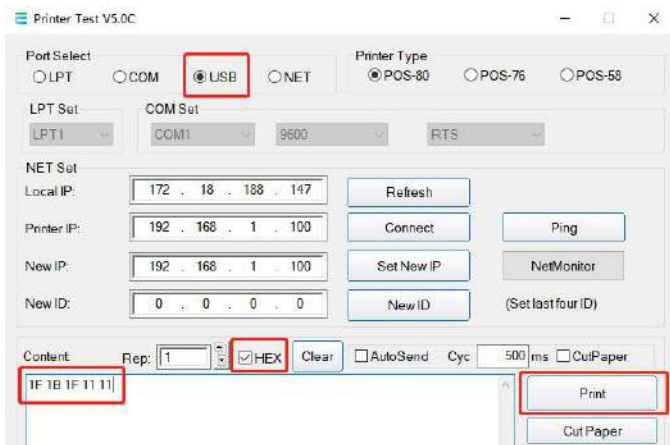
refer to PDF file "Kitchen function setting" in CD

16. (only for P76 series machine)

7.1.1.3. Factory default.

Connect the printer to the computer by a USB cable.

Open "Printer Test V5.0C", clear the input field and enter "1F 1B 1F 11 11", check "HEX", and click on the "Print"

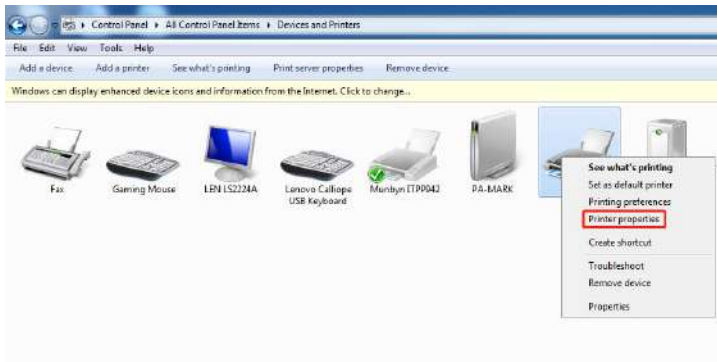


7.1.2. Printer Settings

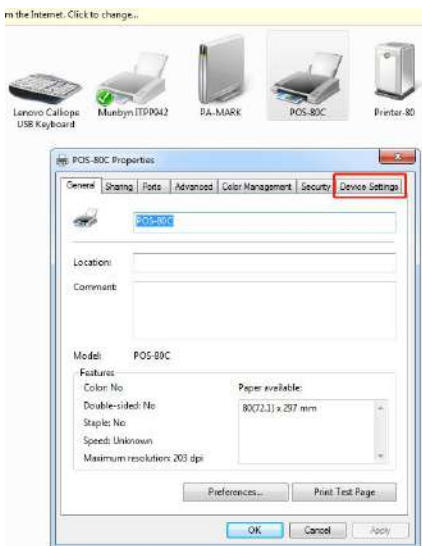
7.1.2.1. Device management

Tips: Please refer to the chapter 1.1.2 and enter the "Devices and Printers".

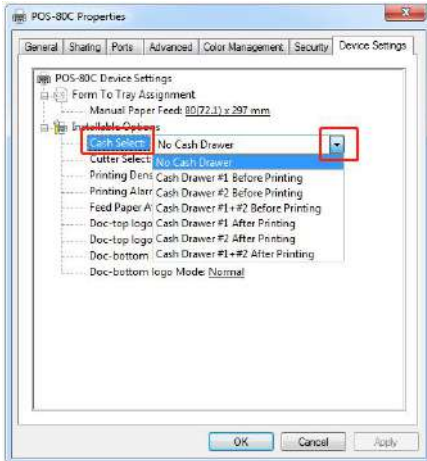
1) Right click on the "POS-80C" and choose "Printer properties"



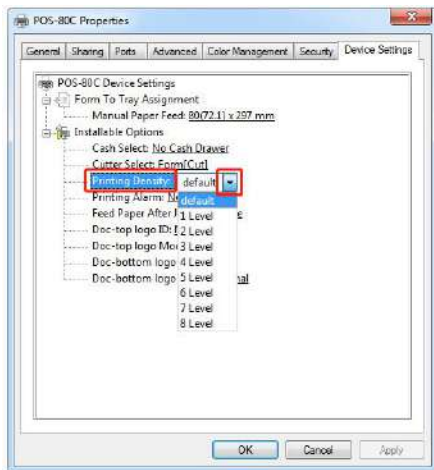
2) Click on the "Device Settings", enter POS-80C Device Settings.



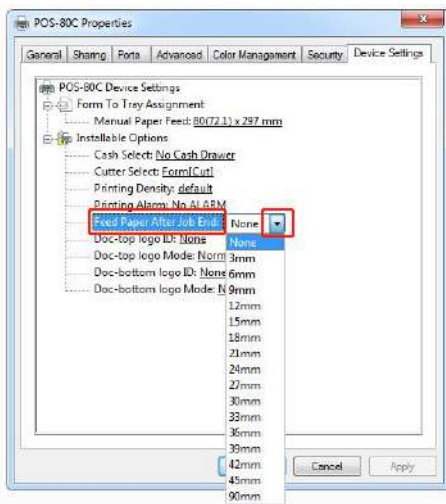
3) Choose the Cash Drawer After Printing



4) Change the Printing Density if the default printing is Blurry.



5) Choose Paper Feed after printing.



Contact us

Need Tech Support, contact us by:



E-mail: support@munbyn.com

Whatsapp: +8617817881067

Skype: munbyn

Support time:

Monday to Friday 24 hours.