

Repel Travel Umbrella

SAFETY WARNING:

Always point the umbrella away from you when opening and closing. The umbrella is spring loaded and opens very quickly. Allow at least 3ft of space in front, to the left, and to the right of you when opening.

INSTRUCTIONS:

- 1 Opening:** Remove the sleeve from the umbrella. With the umbrella pointing away from you, push and release the open/close button on the handle.
- 2 Closing:** With the umbrella pointing away from you, push and release the open/close button to collapse the canopy and ribs. With one hand grasping the handle, take the palm of your other hand and place it at the very top of the umbrella. Your palm should be placed on the small circular plastic cap at the top. Firmly press the handle and top of the umbrella together until you hear it click into place. Never close the umbrella by grabbing the ribs!

HAVE AN ISSUE WITH YOUR REPEL UMBRELLA?

ENJOY HASSLE-FREE REPLACEMENTS: if your travel umbrella is defective or damaged, we will ship you a new one **ABSOLUTELY FREE**.

For fast and knowledgeable service, get in touch with one of our customer service experts right now!

**Contact Upper Echelon Products directly through Amazon for any assistance.
We're here to help!**

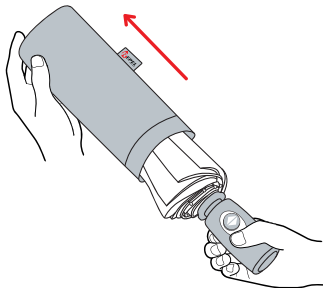
1. Go to product listing on Amazon and select Upper Echelon Products.
2. Select the "Ask a Question" button.
3. Write your message and send! We'll reply in less than 24 hours.
4. Or just simply click the button below!

Ask a question

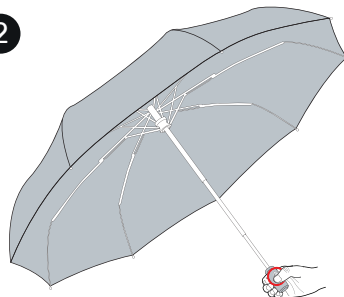


OPENING / CLOSING INSTRUCTIONS

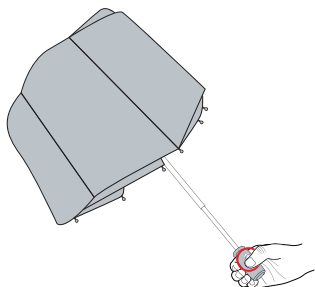
1



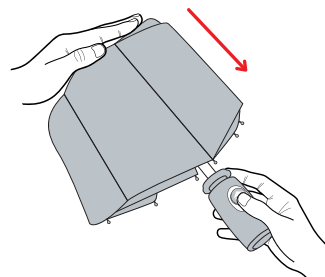
2



3



4



See reverse side for details