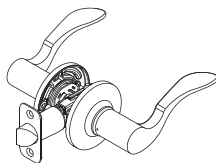
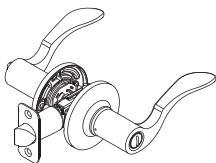
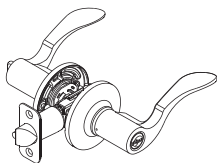


amazonbasics



## Door Lever

Palanca de Puerta

Levier de Porte

## Shelby

B07J4HXZ6Q, B07J4HXKBG, B07J4HXTM3, B07J4VHWRK,  
B07J4V9XGG, B07J5MNSN4, B07J4VQCB1, B07JVPPJ1H,  
B07J51DFVT, B07J51F4JR, B07J4VHWS6, B07J4VNVR5

## Manchester

B07J51KQFM, B07J5MV65R, B07J51FKQD, B07J5HH1K7,  
B07J4V9Z8F, B07J5MV65Z, B07J4VHWT3, B07JVP265Q,  
B07J51FKQX, B07J5HR6Z2, B07J4VHQWY, B07J4VLXNL

## Victorial

B07J5MV66X, B07J51L7FX, B07J51F4LL, B07J51F4LP,  
B07J5N33B1, B07J4VQCD9, B07J4VHQXZ, B07J5HR71G,  
B07J4VHVG9, B07J51DNNL, B07J4VK6YH, B07J5MXK34

## December

B07J4VLVHN, B07J51DNNW, B07J51DFZ8, B07J4HXTQH,  
B07JVPFT25, B07J5HM9RB, B07J51DNPF, B07J4VHVH7,  
B07J4HXKGF, B07JVPFFYV, B07J4V9XM2, B07JVP268G

## Victory

B07JVPFFZ4, B07J51DG1D, B07J5HM9S2, B07J51DG1L,  
B07J5HR73D, B07J5MV697, B07J5MNSRV, B07J5MRQTF,  
B07J4VHWXG, B07J51KQL1, B07J51DYHG, B07J5MXK56

**Straight**

B07JVPFG11, B07J4VK71X, B07JVP269Y, B07J5MV6BF,  
B07J4VDX8D, B07J4VYRSZ, B07J51RF6C, B07J4VDX8M,  
B07J5MXK63, B07JVPPJ7R, B07J51F4QH, B07JVPPJ7X

**Cambridge**

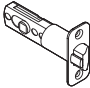









B07J4V9ZFM, B07J4VHR2Z, B07JVPPJ8C, B07JVPPJ8F,  
B07J51F4QY, B07J4VYRTX, B07J5HRD8W, B07J4V9XPZ,  
B07J5HM38V, B07J5HM38Y, B07J51DG4G B07J5MV6D1

■ English ..... 4

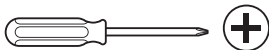
# Welcome Guide • English

## Contents:

Before getting started, ensure the package contains the following components:

A		x1	F		x1
B		x1	G	 (only for entry)	x2
C		x1	H		x1
D		x1	I		x4
E		x1	J		x2

You will need:



Screwdriver



Tape measure

# Before First Use

- Check for transport damage.

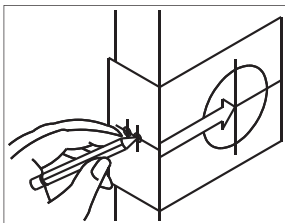


**DANGER**

**Risk of suffocation!** Keep any packaging materials away from children – these materials are a potential source of danger, e.g. suffocation.

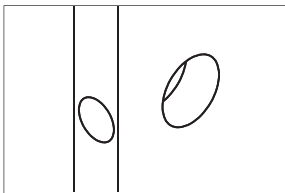
## Installation

### Step 1: Mark Door with Template



- Start at 36" (914 mm) from the floor, then fold and apply the template and mark the center of door edge.
- Select a 2-3/8" (60 mm) or 2-3/4" (70 mm) backset as desired and mark the center of hole on the door face.

### Step 2: Drill Holes

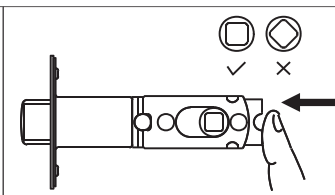
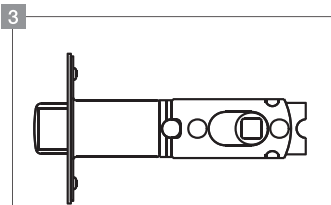
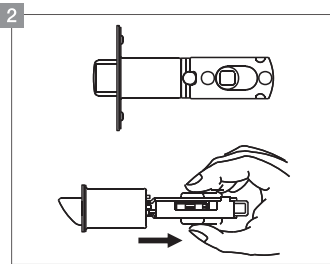
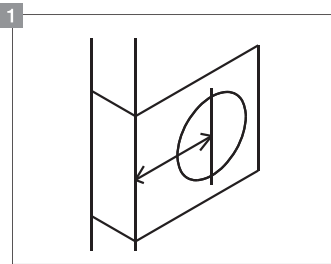


- Drill a 2-1/8" (54 mm) hole on the door face from both sides to avoid wood splitting.
- Drill a 1" (25.4 mm) hole for the latch. (Refer to step 5 point 3 for the drive-in latch.)

# Installation

## Step 3 (optional): How to Adjust the Backset

English



1. The backset is the distance from the door edge to the center of the hole on the door face. Some locks are supplied with an adjustable latch which can fit a 2-3/8" (60 mm) or 2-3/4" (70 mm) backset. Just follow the steps shown below to change the backset.
2. This latch is set for a 2-3/8" (60 mm) backset. Keep the spindle cam in the correct position as illustrated. Pull the spindle cam all the way to the right.
3. Your latch is now set for a 2-3/4" (70 mm) backset. To reset a 2-3/8" (60 mm) backset, just push the spindle cam back to the left side. Please make sure that the cams stay with a squared shape.

Español

Français

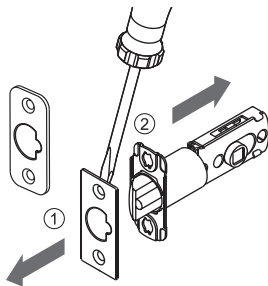
# Installation

## Step 4 (optional): Replace Face Plate



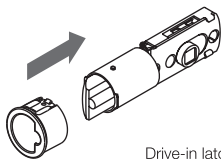
### NOTICE

Prior to installation, please make sure that the face plate is appropriate for the latch.



1. Use the slotted screwdriver to pry open the face plate and the lock body.
2. Install the appropriate face plate onto the latch body.

### Installation of the Round Face Plate



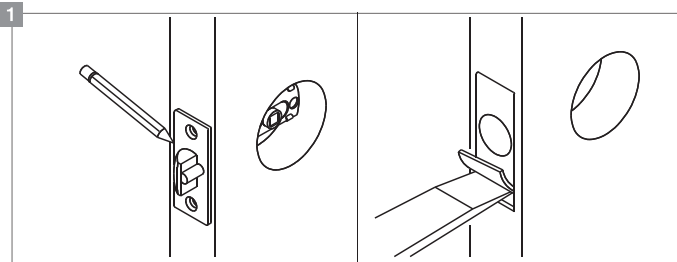
Drive-in latch

- Align the round face plate to the head of the latch, and lock it into position.

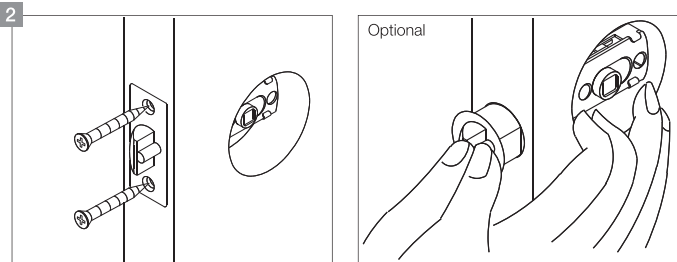
# Installation

## Step 5: Install Latch

English



Español



1. Insert the latch in the hole, then mark the outline of the face plate and chisel  $5/32''$  (4 mm) deep.
2. Insert latch and tighten screws.

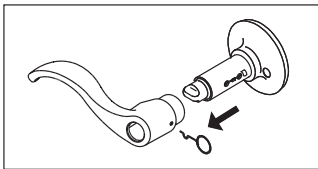
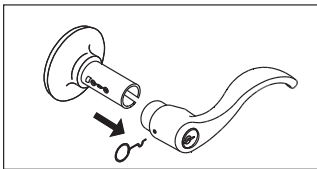
### Optional

- For the drive-in latch, drill a  $31/32''$  (24.6 mm) hole and press the latch in until it is flush with door edge.

Français

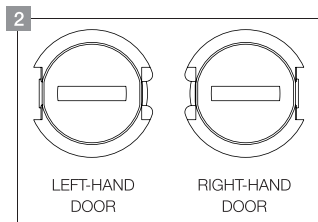
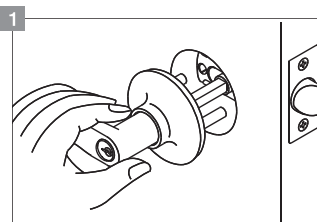
# Installation

## Step 6 (optional): Reversible Levers



- Please check that the levers are unlocked (for entrance sets only). Depress the lever catch with the hand tool to the release outside lever and pull the lever off. Pull the lever off of the cylinder from the outside lever.
- Swap the inside and outside levers, putting the cylinder on the outside lever (for entrance sets only). Please follow the same procedures for the inside lever.
- Push the handles in until the catch clicks. Make sure the levers are retained by the lever.

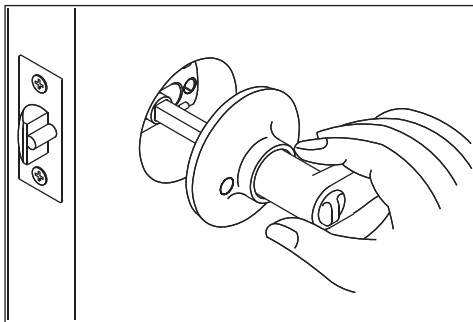
## Step 7: Install Outside Lever



1. Insert the spindle through the latch. Press flush against the door.
2. Only supporting the privacy function, the handle can only be installed when the "emergency release" is set in this position.

# Installation

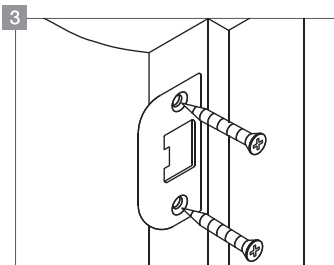
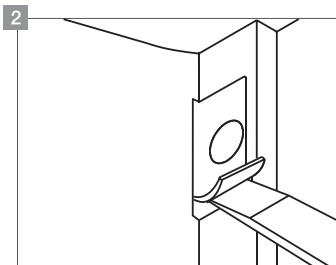
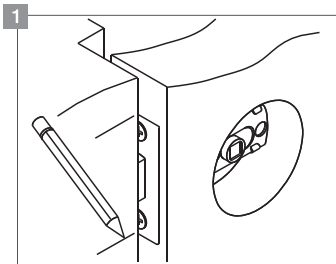
## Step 8: Install Inside Lever



- Install the inside lever and tighten screws until the lock is firm.

# Installation

## Step 9: Install Strike



1. Close the door to make the horizontal center line of the strike.
2. Measure one-half of the door thickness starting from the door stop and mark the vertical center line of strike. Drill a 1" (25.4 mm) hole that is 1/2" (13 mm) deep at intersection of horizontal and vertical line of the strike. Match the screw holes on the strike with the center lines on the jamb. Mark an outline and chisel 1/16" (1.6 mm) deep for the strike.
3. Install the strike and tighten the screws.

## Cleaning and Maintenance

- Check the components regularly to make sure all screws and bolts are tightened.

# Warranty Information

To obtain a copy of the warranty for this product:



Visit [amazon.com/AmazonBasics/Warranty](https://amazon.com/AmazonBasics/Warranty)

— or —



Contact Customer Service at 1-866-216-1072

## Feedback

### Love it? Hate it?

Let us know with a customer review.

AmazonBasics is committed to delivering customer-driven products that live up to your high standards. We encourage you to write a review sharing your experiences with the product.

Please visit: [amazon.com/review/review-your-purchases#](https://amazon.com/review/review-your-purchases#)



For further services:



Visit [amazon.com/gp/help/customer/contact-us](https://amazon.com/gp/help/customer/contact-us)

— or —



Contact Customer Service at 1-866-216-1072

**amazon**basics

[amazon.com/AmazonBasics](https://amazon.com/AmazonBasics)

MADE IN PHILIPPINES

## Template

Fold on the dotted line and fit on the door edge.

45 40 35  
1-3/4" 1-9/16" 1-3/8"

Make a 1" (25.4 mm) hole at the center of the door edge.

For a 2-3/4" (70 mm) backset

Fits 2-1/8" (54 mm)

For a 2-3/8" (60 mm) backset

5/32" (4 mm) x  
2 hole for metal  
door only.

2-1/4" (57 mm)



## Plantilla

Doble por la línea punteada y encájela en el borde de la puerta.

45 mm 40 mm 35 mm  
1-3/4 pulgadas 1-9/16 pulgadas 1-3/8 pulgadas

Taladre un agujero de 25,4 mm (1 pulgada) en el centro del borde de la puerta.

Para un agujero de cerradura de 70 mm (2-3/4 pulgadas)

Para 54 mm (2-1/8 pulgadas)

Para un agujero de cerradura de 60 mm (2-3/8 pulgadas)

2 orificios de 4 mm (5/32 pulgada) para puertas metálicas solamente.

Hoyo de 57 mm (2-1/4 pulgadas)



## Gabarit

Pliez-le sur la ligne pointillée, puis placez-le sur le rebord de la porte.

45 mm 40 mm 35 mm  
1-3/4 po 1-9/16 po 1-3/8 po

Percez un trou de 25,4 mm (1 po) au centre du rebord de la porte.

Pour un retrait de 70 mm (2-3/4 po)

Correspond à 54 mm (2-1/8 po)

Pour un retrait de 60 mm (2-3/8 po)

4 mm (5/32 po) x 2 trous pour porte en métal uniquement.

57 mm (2-1/4 po)