

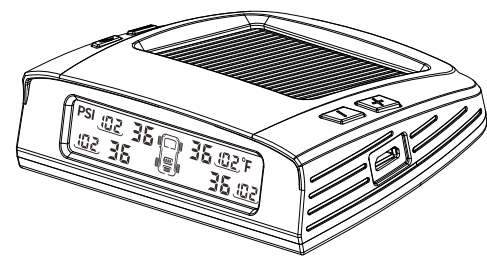
Tymate

Tire pressure monitor system

Model: TM2

Caution: Must turn on the monitor first and then install the sensors.

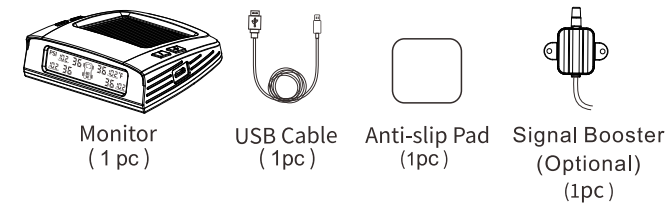
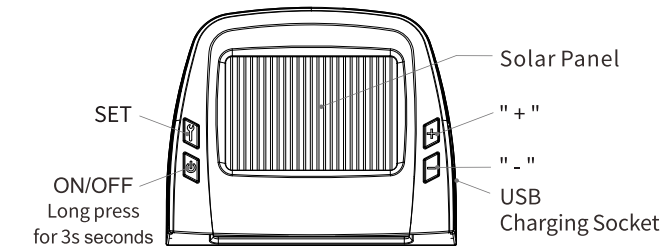
Long press the "⏻" button for 3 seconds to turn on the monitor.



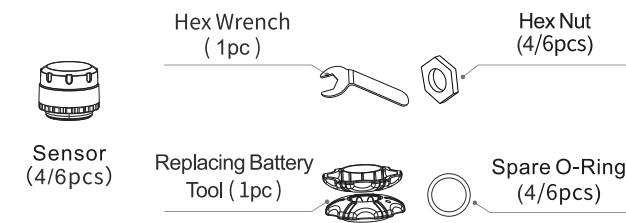
Implementation standards:GB26149-2017

1. Kit Contents

1-1. The monitor and ACC

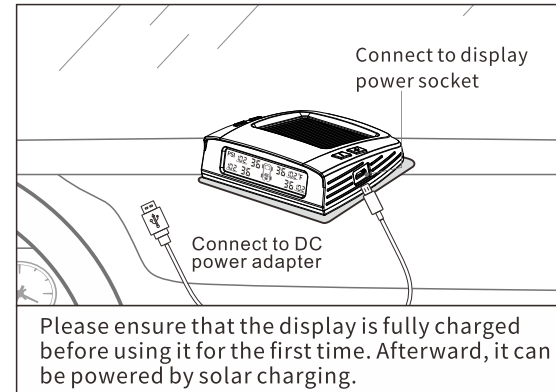
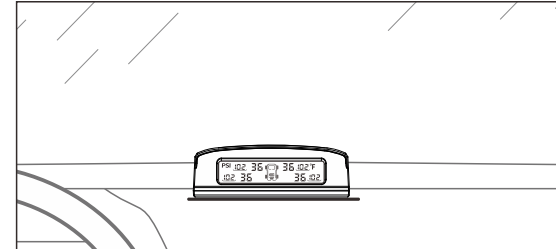


1-2. The sensor and ACC



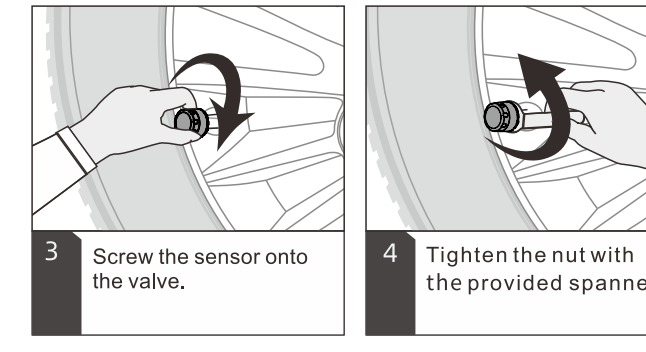
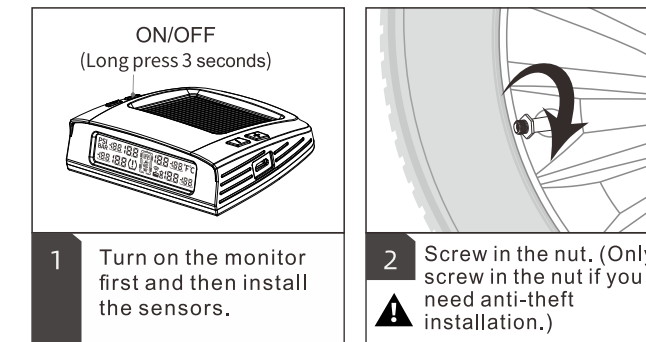
2. Monitor Installation

Turn on the monitor, and then install the sensors.
Long press the "⏻" button for 3 seconds to turn on the monitor.



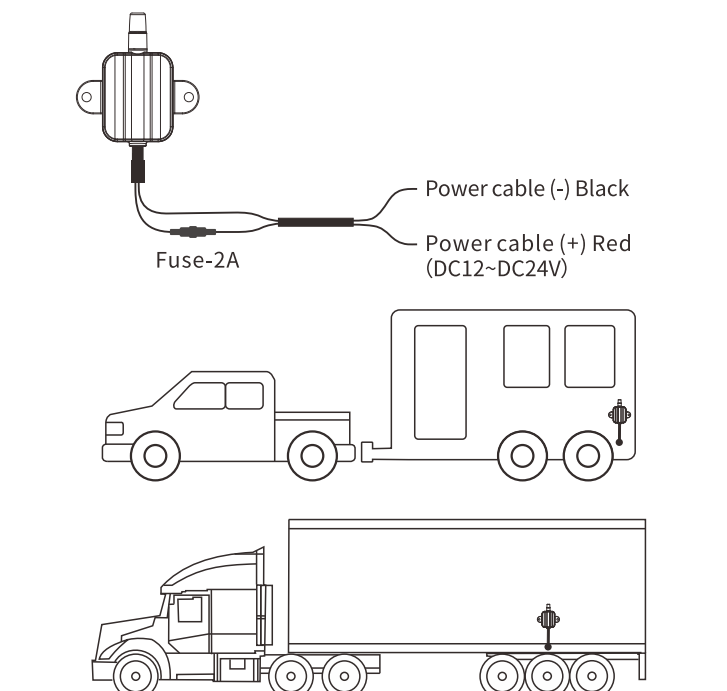
3. Sensor Installation

※**Note:** Before installing the sensor, make sure that the tire pressure is the required air pressure or the standard air pressure.



4. Signal Booster Installation (Optional)

The signal booster needs to be installed in the middle of the rear axle of the trailer or RV, and the antenna should be exposed without any cover.
The installation is complete once the signal booster is connected to the power supply and has been installed firmly.



5. Products

Factory default setting	
Reference pressure	When the sensor is installed on the tire, the current pressure will become the reference pressure
Pressure Unit	PSI
Temperature Alert	°F
High temperature alert	158°F

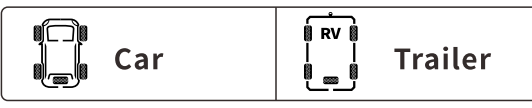
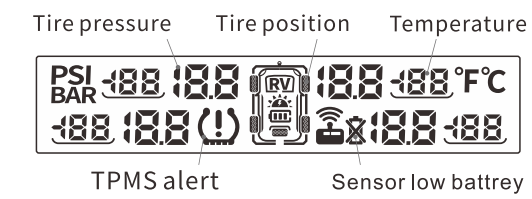
Change unit
To switch the tire pressure unit to PSI/BAR, press and hold the "+" button for 3 seconds while in standby mode.
To switch the tire temperature unit to °F/C, press and hold the "-" button for 3 seconds while in standby mode.

Switch display to view front vehicle /spare tire / trailer / spare tire (Note: This function is only available when the trailer/spare tire sensors are installed.)
Press the "+" or "-" buttons in standby mode.

Reference pressure set automatically
When the sensor is installed, the current tire pressure will become the reference pressure.
The monitor will issue a high pressure alert when the tire pressure is 25% higher than the reference pressure, and a low pressure alert when it is 15% lower than the reference pressure.

Turn on/turn off the signal booster
To turn the signal booster on or off, press and hold the SET button for 3 seconds. If the signal booster signal is not received within 5 minutes after the monitor is turned on, the signal booster icon will flash. When the signal booster is turned off, the icon will not flash.

6. Alert status



Alert	Alert status
High Pressure Alert	⚠️ +25% PSI
Low Pressure Alert	⚠️ -15% PSI
High Temperature Alert	⚠️ 158 °F
Fast Leakage Alert	⚠️ 36 ↓
Sensor Low Battery Alert	⚠️ 🔋
Sensor Lost Signal Alert	⚠️ - - -

7. Troubleshooting

- The monitor cannot turn on.**
Please re-charge the monitor with a USB cable.
- There is a tire pressure missing on the display during use.**
The monitor should not be placed too closely to other electronic devices, such as the dashboard, dash cam, navigation system, or other aftermarket electronic devices. After changing the monitor position, drive the car for 5 minutes until the monitor returns to a normal state.
- Doubting that whether the sensor detects tire pressure accurately or not.**
To test the sensor, inflate or deflate the tire and check if the display pressure value changes. If the pressure value changes, it means that the sensor is working. If there is no change, the sensor is not working. Screw the other tire sensor onto this tire valve and see if the air pressure is similar to the previous sensor's pressure. A small deviation in air pressure indicates that the original sensor accurately detects air pressure. If the air pressure deviation is large, it means that the air pressure detected by the original sensor is not accurate.
- Some sensors do not work after using for a long period of time.**
The sensor's battery may have been run out, which needs to be replaced with a new (battery CR1632).
- The tire pressure increases during driving.**
This is a normal phenomenon, the tire temperature increases during driving, causing the tire pressure to increase.
- The car is exposed to the sun, and the display brightness is dim.**
When the car is exposed to the sun, its temperature rises. If the monitor temperature exceeds 185°F, the display brightness will dim. After driving for a while, the display brightness will return to normal as the car temperature drops.

Troubleshooting

- The tire pressures are the same, but the pressure alert values are different.**
Because the sensors set the tire's reference pressure automatically when they were installed. The reference pressure may vary for each tire, which will cause different pressure alert values.
- When the tire pressure is too high, after the tire is deflated to the normal pressure, how to deal with the tire pressure alarm on the display?**
Unscrew the sensor from the tire valve. The display will show "0" pressure for the corresponding tire. After putting the sensor back into the tire valve, the reference pressure will be set automatically again, and the alarm will stop.
- How to hide front vehicle or trailer on the display?**
Note: This function is only available when the trailer sensors are installed. If the front vehicle and trailer are disconnected, the display will automatically hide the front or trailer icon and the corresponding data if the monitor does not receive sensor data of the front vehicle or the trailer for more than 8 minutes. When the front vehicle and trailer connect again and the monitor receives both sensor data, the display will show the front vehicle or trailer icon again with the corresponding data.
- All tire data of trailer disappeared?**
Note: This function is only available when the trailer sensors are installed. If the trailer is disconnected from the front vehicle, the display will hide the trailer icon and the corresponding data if the monitor doesn't receive the trailer sensor signal for more than 8 minutes. When the trailer is connected to the front vehicle again and the monitor receives the trailer sensor signal, the display will show the trailer icon and the corresponding data again.
- When the signal booster is flashing?**
The monitor has not received the booster signal.

⚠️ If the sensor is damaged and needs to be replaced, or a sensor other than the standard configuration needs to be added, please scan the QR code to watch the video operation.

Sensor ID learning

Please scan the QR code to watch the video operation for sensor installation and sensor battery replacement operation.

Sensor installation

Sensor battery replacement operation

User manual

Support Mail: tymate@afterservice.vip

Use camera or QR scanner to scan

VIP Extended Warranty
24h Online Service
<https://tymate.afterservice.vip>
+1(855)-492-9277
Mon-Fri: 9:00AM - 5:00PM (EST)

www.tymate-tech.com