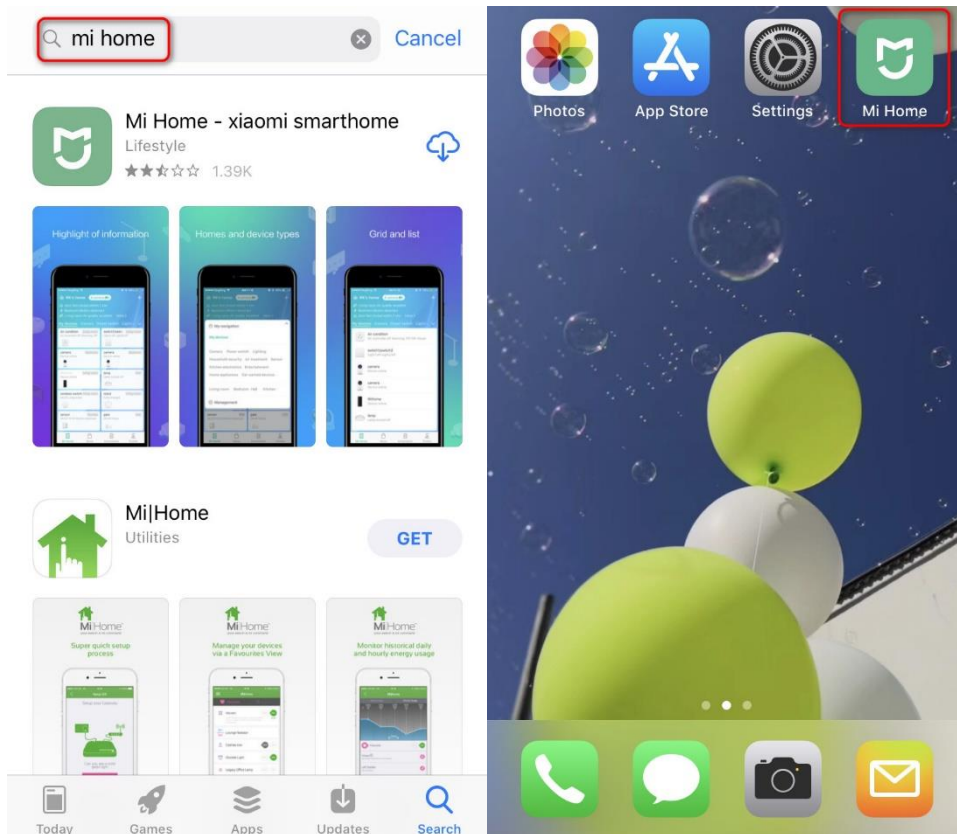


## Instruction

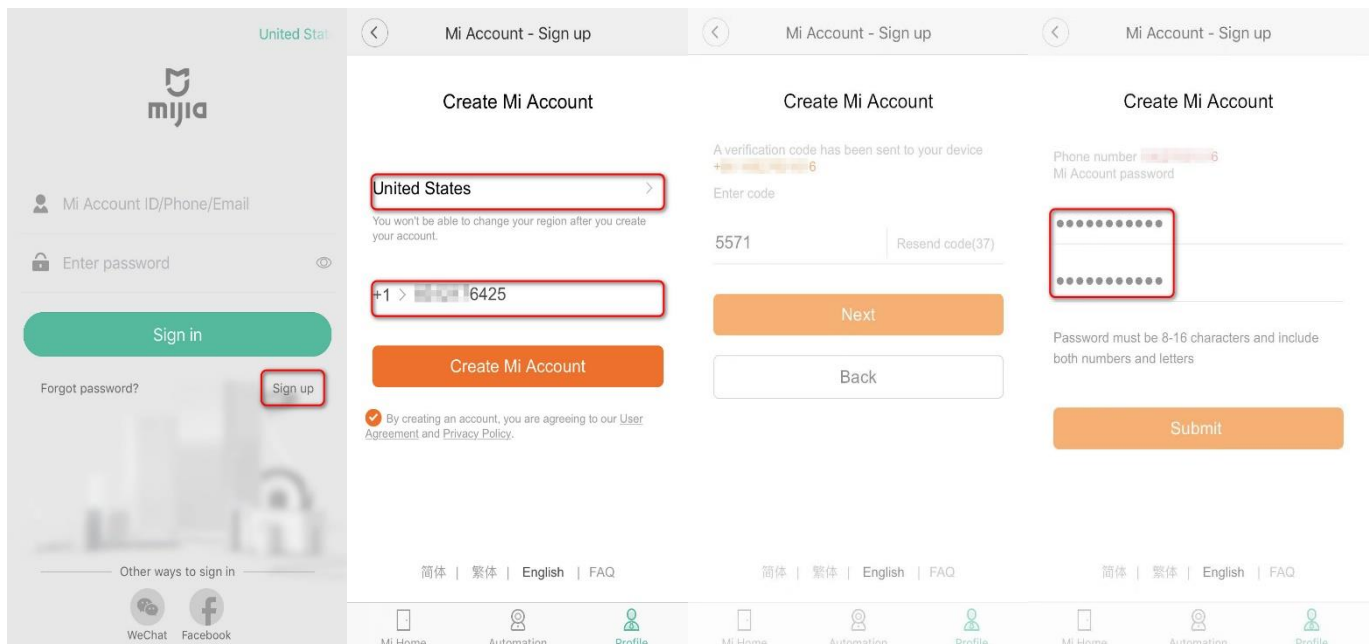
- 1 . How to connect the roborock S5 to Wi-Fi on IOS..... Page 1
- 2 . How to connect the roborock S5 to Wi-Fi on Android..... Page 5

### 1) How do I connect my Roborock device to Wi-Fi on an iOS device?

1. Download the Mi Home from the App Store.



2. Register for a Mi Home account using your phone number (Skip this step if you already have a Mi account).

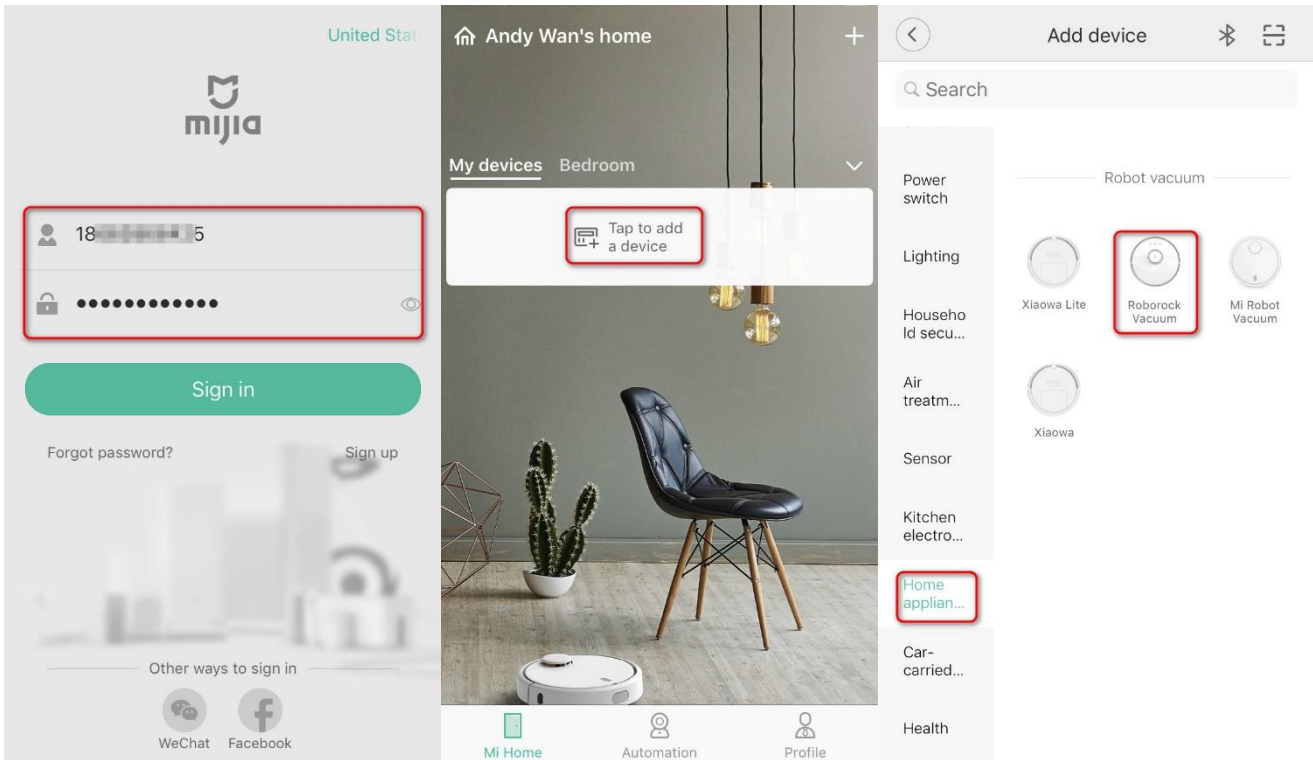


## 2. Add Roborock Device

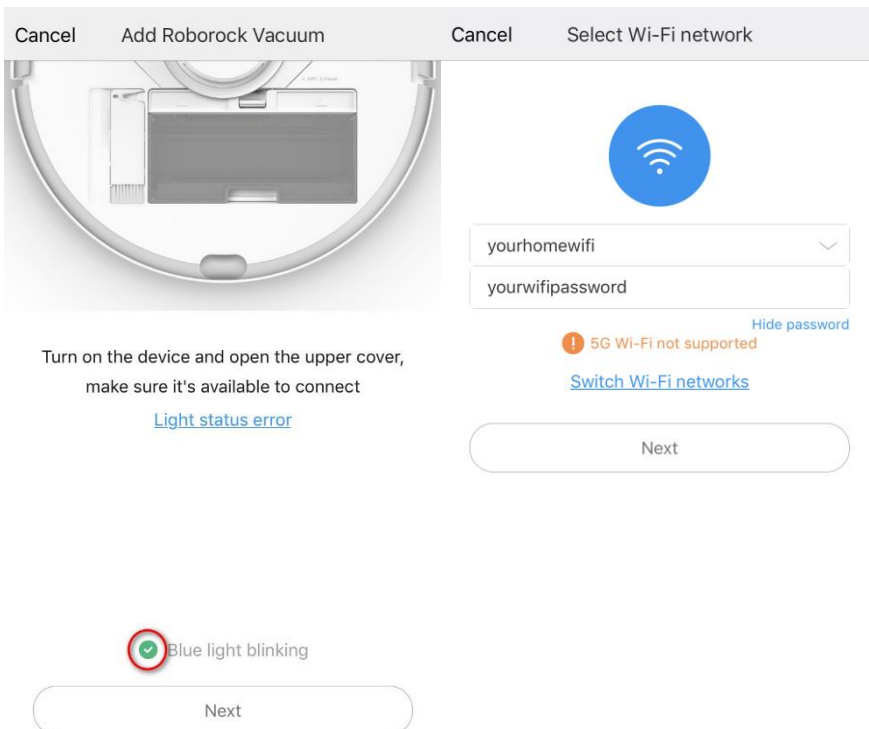
### Notes:

- a. Make sure your phone is already connected to Wi-Fi;
- b. Open the top of your cleaner to see the Wi-Fi indicator light during the connection process.

- 3.1 Sign in to you Mi Home account.
- 3.2 Tap the “+” icon to add a device.
- 3.3 Select Roborock Vacuum from the “Home appliance” category.

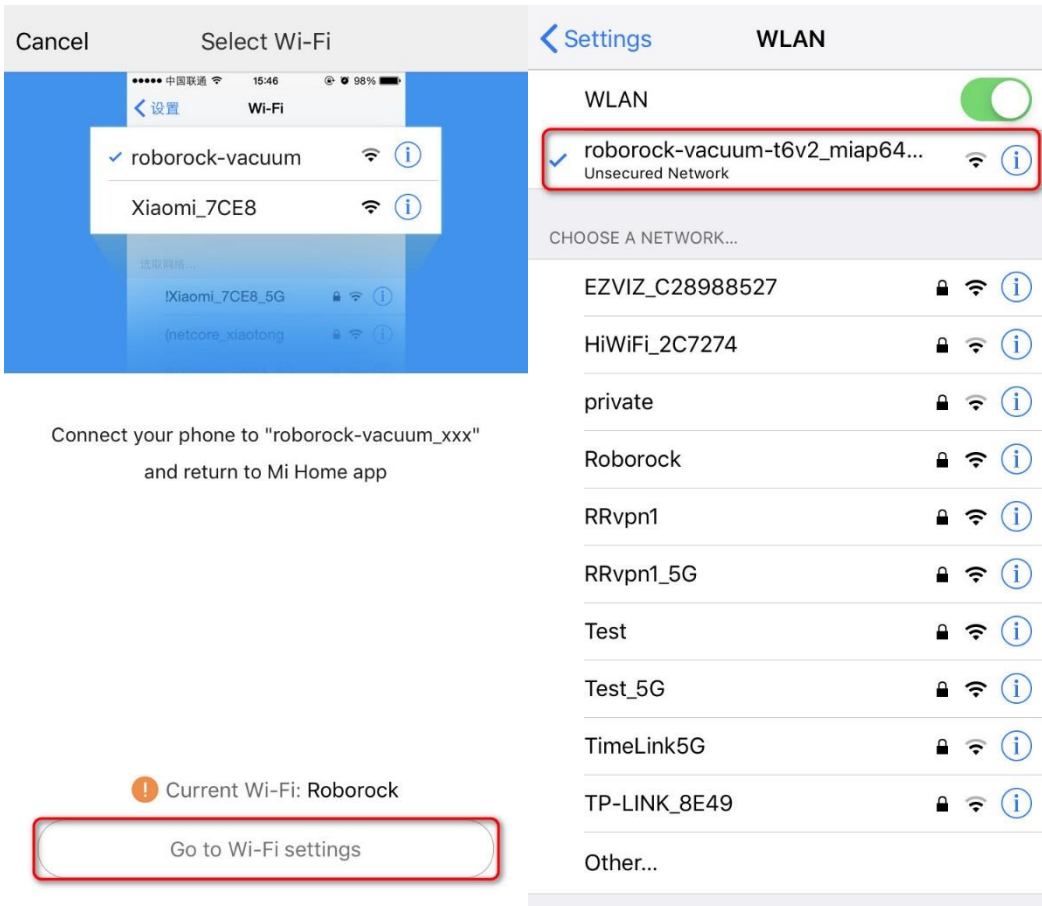


- 3.4 Tick “Blue Light Blinking”.
- 3.5 Select your home Wi-Fi and input your Wi-Fi password.



3.6 Tap "Go to Wi-Fi Settings".

3.7 Select Wi-Fi network named roborock-vacuum-xxxx to connect.

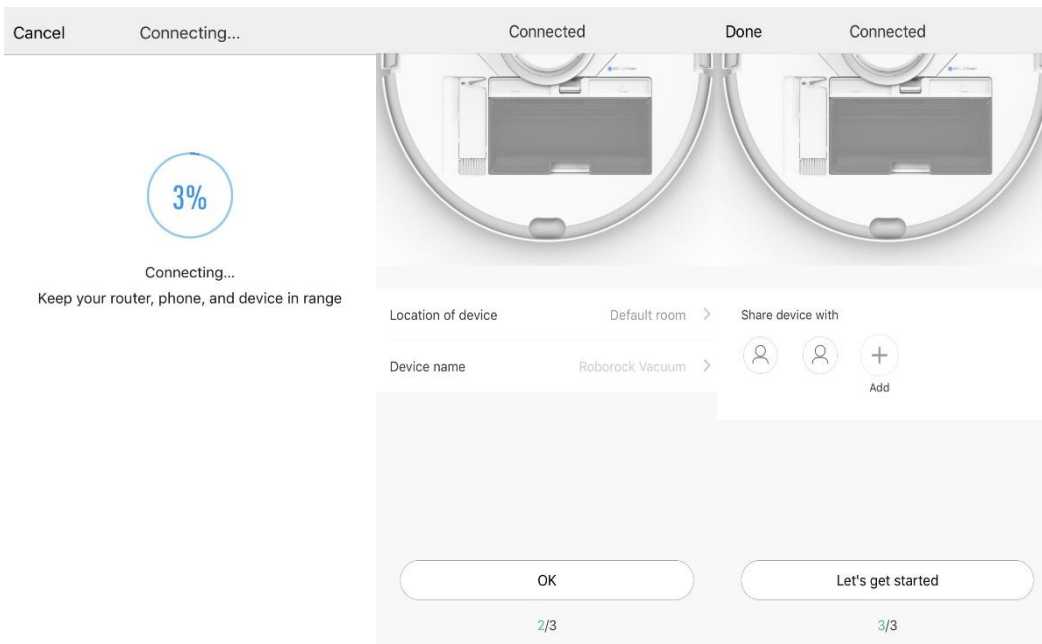


3.8 Go back to the Mi Home app and the connection interface will appear. Wait until it reaches 100%.

3.9 Select the location of device and give it a name.

**Note:**

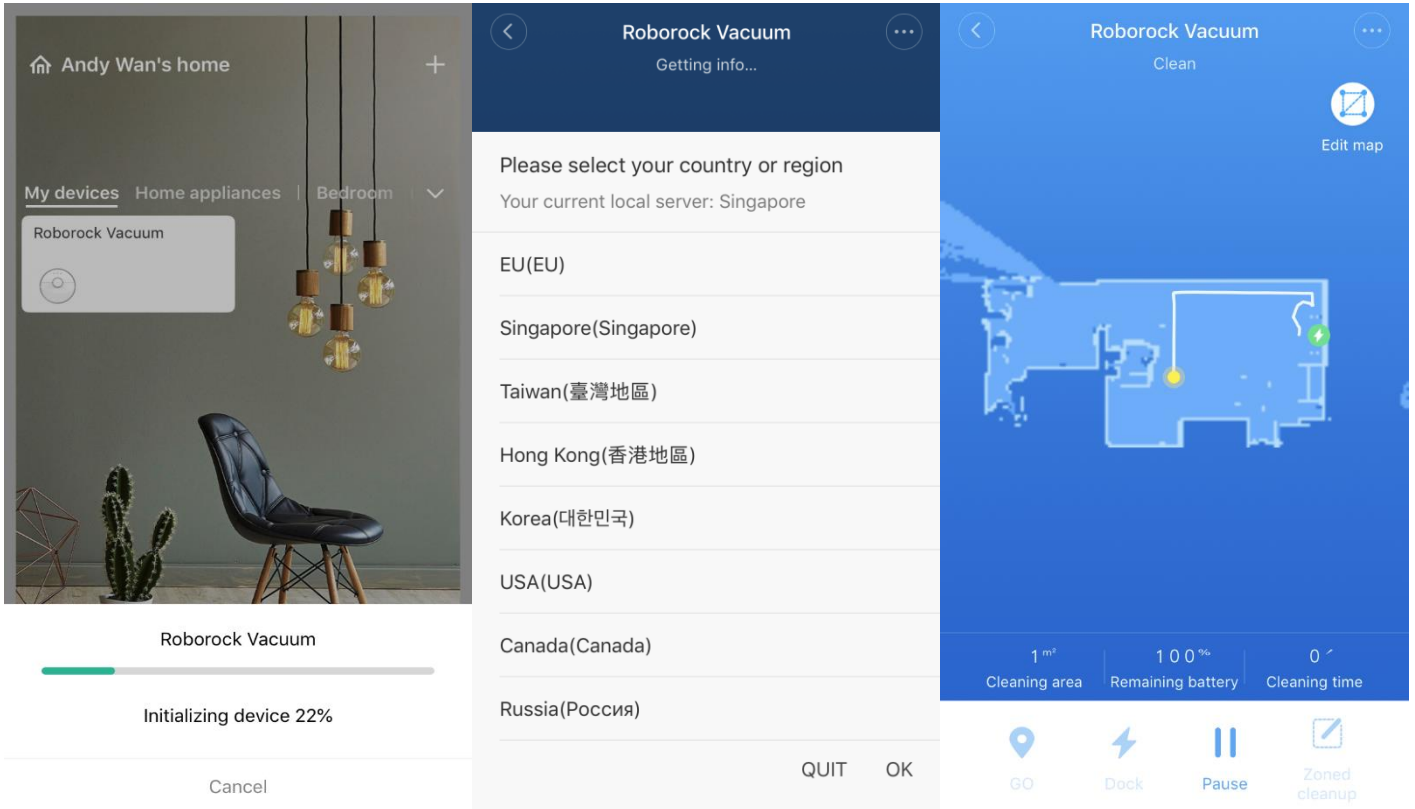
*The Wi-Fi indicator on the top of your vacuum will go from flashing to solid if it has connected successfully.*



#### 4. Access device to operate.

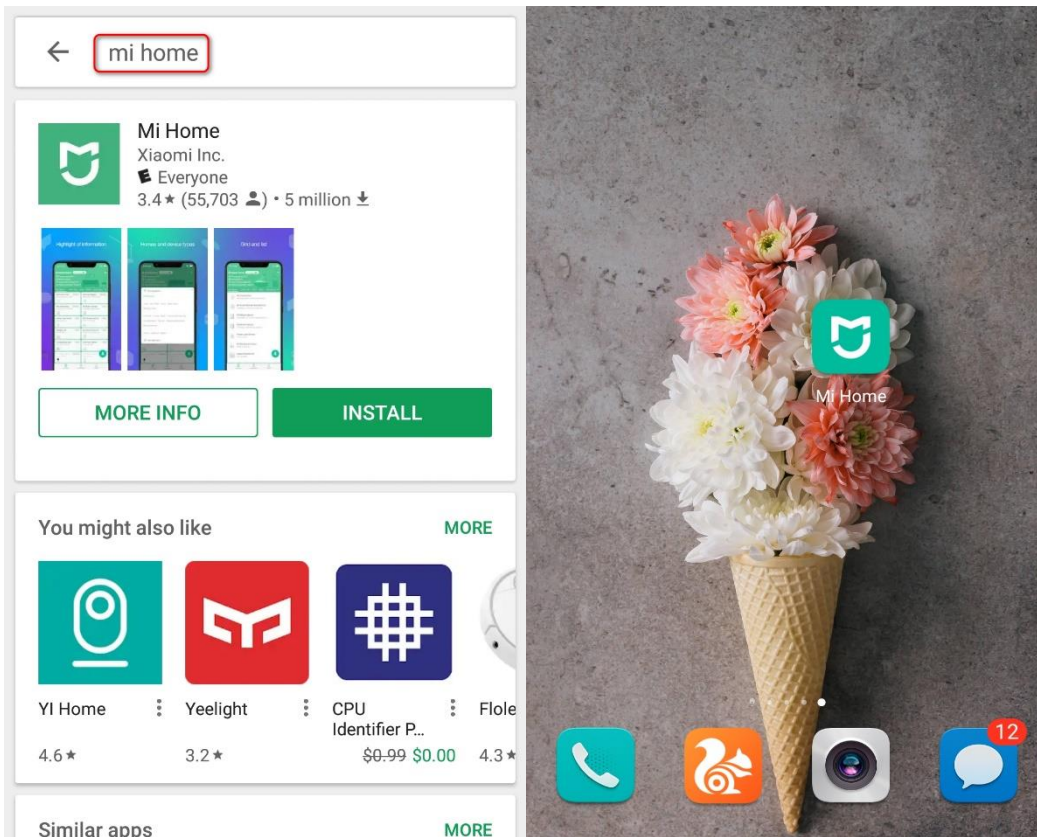
4.1 Tap the device in the Mi Home homepage and wait until initializing reaches 100%.

4.2 Select your current region and you are ready to control your device from the app.

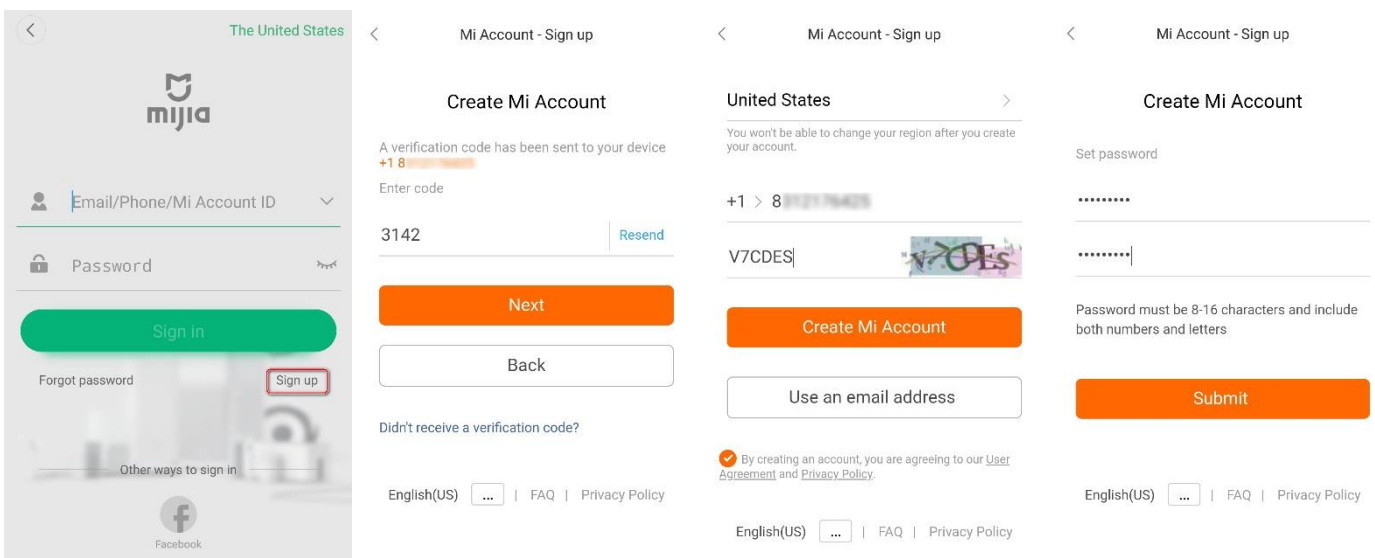


## 2) How do I connect my Roborock cleaner to Wi-Fi using an Android device?

### 1. Download and install Mi Home from Google Play.



### 2. Register for a Mi Home account using your phone number (Skip this step if you already have a Mi account).



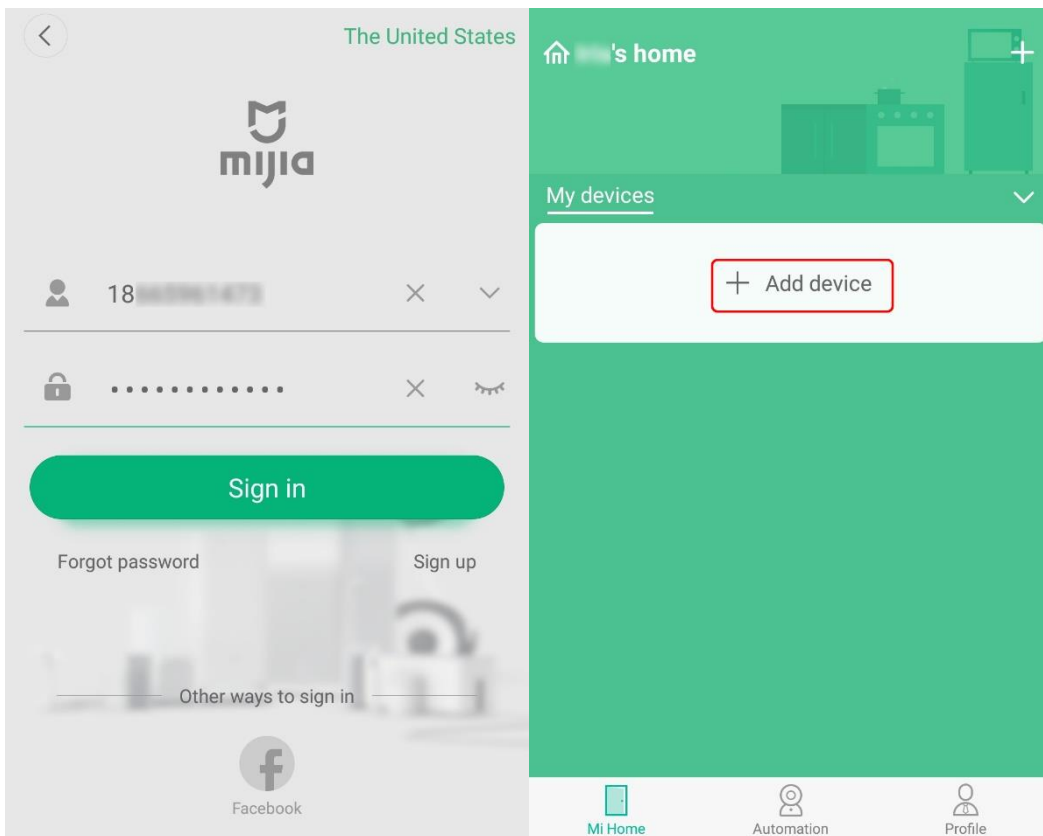
### 3. Add Roborock device.

*Notes:*

c. Make sure your phone is already connected to Wi-Fi;

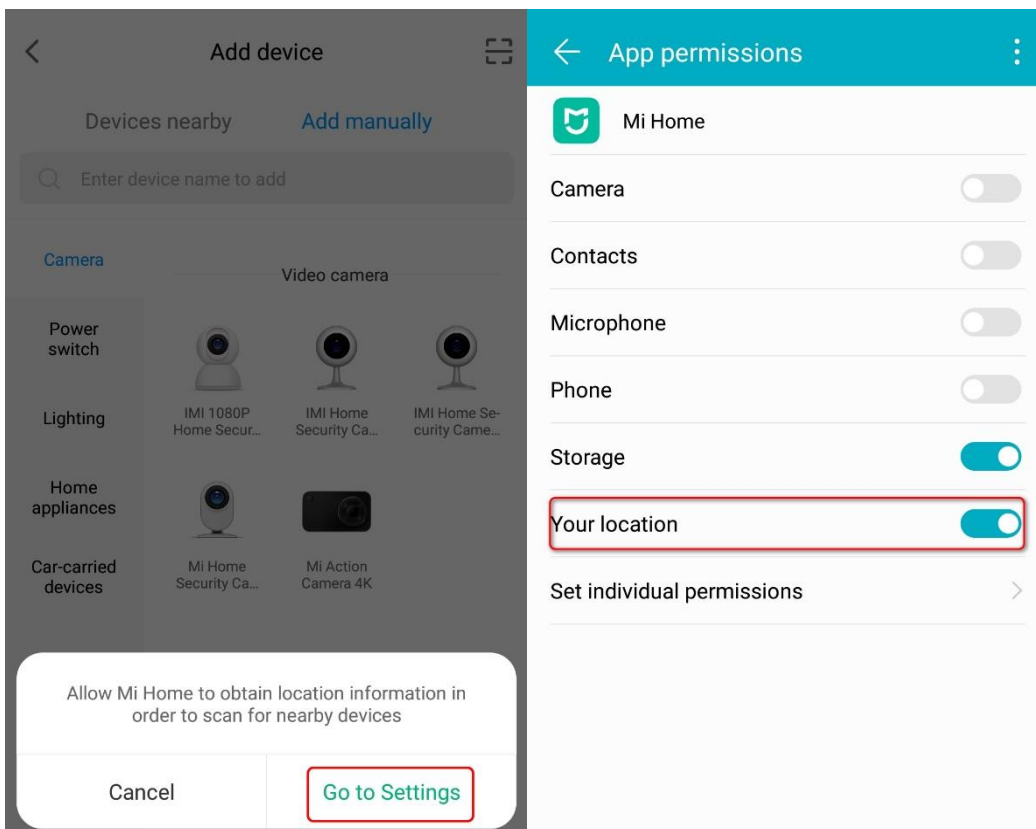
d. Open the top of your cleaner to see the Wi-Fi indicator light during the connection process.

3.10 Sign in to your Mi Home account.

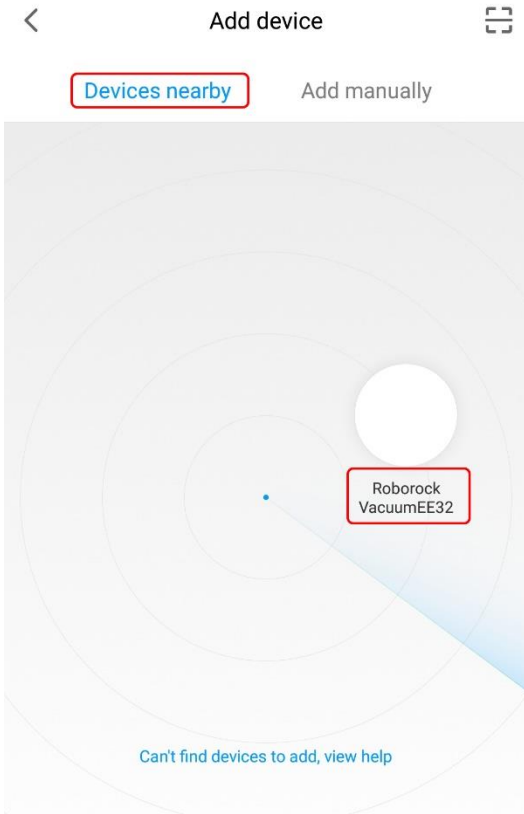


3.11 Tap Add device.

3.12 Go to your phone's settings and give Mi Home access to your home location.



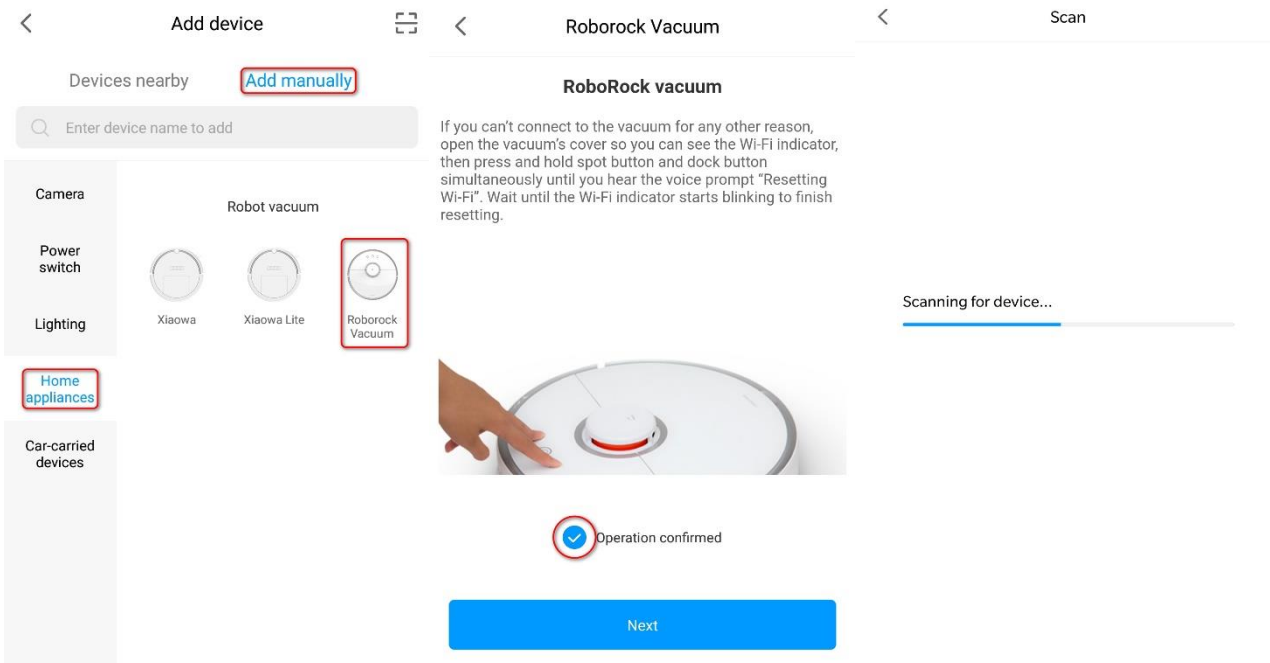
3.12.1 Detect nearby devices and add your Roborock.



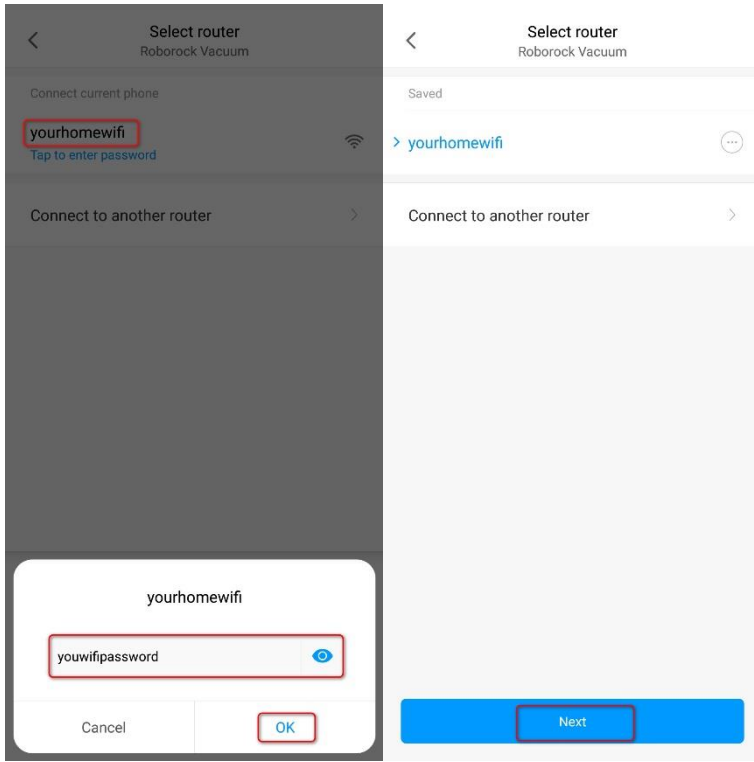
3.12.2 Devices can also be added manually.

3.3.2.1 Select Roborock Vacuum from the "Home appliance" category.

3.3.2.2 Tick "Operation confirmed".



3.13 Select your home Wi-Fi and input your Wi-Fi password.



3.14 Wait until your device connects to the Wi-Fi. The Wi-Fi indicator on the top of your vacuum will go from flashing to solid if it has connected successfully.

3.15 Give it a name and you are ready to control your device from the app.

