

AUMOX

Installation Guide

18-Port Gigabit Switch with 16-Port PoE

Model: SG518P

LED Explanation

VLAN

- On
- Off

Power

- On
- Off

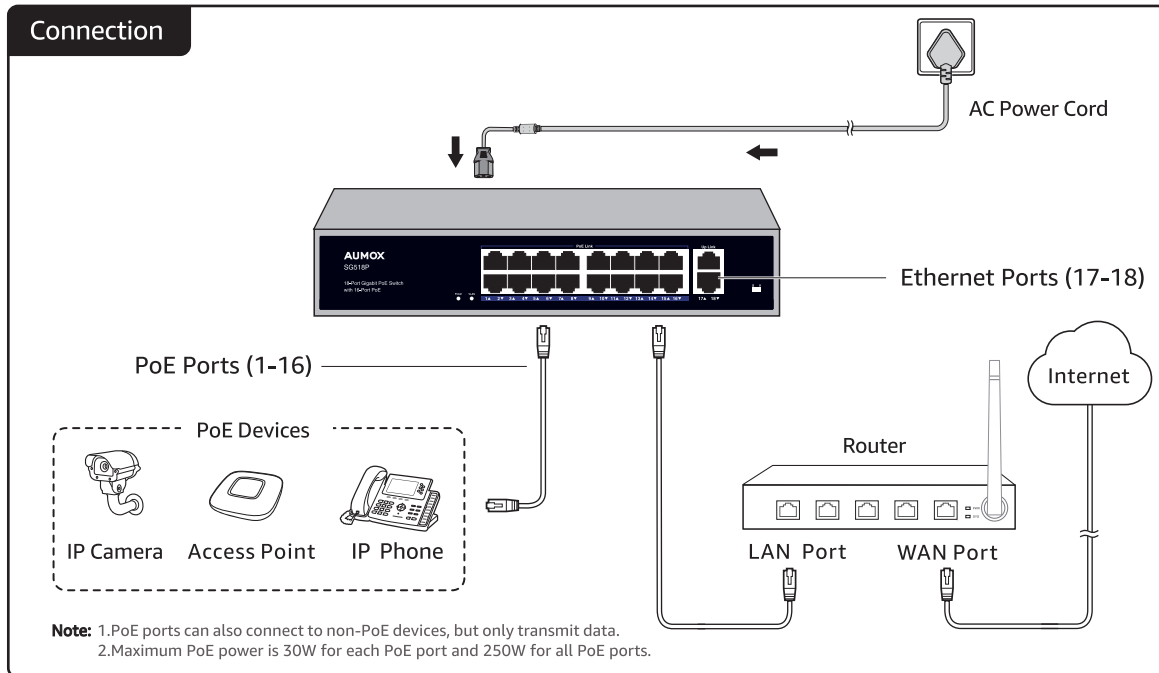
Link/Act

- ▲ On: Link successful
- ▲ Off: No Link
- Blink: Data working

Note: If VLAN is enabled, ports 1-16 can not communicate with each other, and can only communicate with ports 17-18; and ports 17-18 can communicate with each other.

Note: If a PoE device is connected, you can check the connected device's indicator to see if the switch has supplied power to it.

Connection



Need help?

This AUMOX product contains 1-year limited warranty and lifetime technical support.

For more information and warranty requests, please contact our 7x24 hours support team.

Visit <https://aumox.com/support/> or simply scan the QR code below:



Specifications

Model	SG518P
PoE Port	16x10/100/1000Mbps
Uplink Port	2x10/100/1000Mbps
Output Power	15.4W/30W
Power Pin	1/2+ 3/6-
Whole Power	≤250W(52V 4.8A)
PoE Type	End-span
Power Distance	≤100m
Network Standard	IEEE802.3af/at
Data Distance	≤100m
Switch Capability	12Gbps
Forwarding Mode	Store and forward
MAC Address	8K
Forwarding Rate	10BASE-tx:14880PPS/port 100BASE-tx:148800PPS/port 1000BASE-tx:1488000PPS/port
Working Environment	-10°-- 55°C
Weight	2.05kg(4.52 lbs)
Size	10.63*7.09*1.73 in (270mm*180mm*44mm)