



Arlo Q Plus™

Quick Start Guide



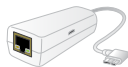
## Welcome

Thank you for choosing Arlo Q Plus.  
Getting started is easy.

## What's Included



Arlo Q Plus camera



PoE adapter



USB power adapter



micro USB  
2.0 cable



wall-mount  
plate



4 mounting  
screws

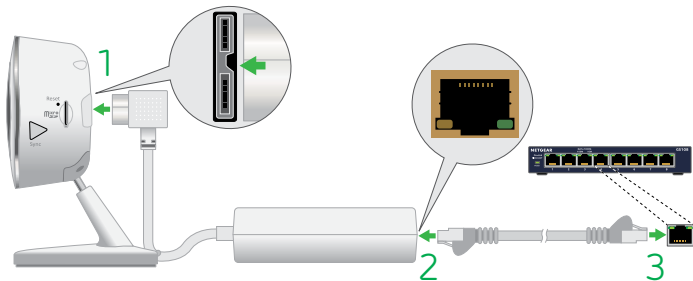
## 3 Ways to Connect Your New Camera

You can connect your Arlo Q Plus camera to the Internet in any of three different ways:

- **Power over Ethernet (PoE).** Connect the Arlo Q Plus camera to a PoE switch using the included PoE adapter if you want to power and connect the camera to the Internet with a single cable.
- **WiFi.** Connect the Arlo Q Plus camera to your router using WiFi and power the camera with the included micro USB cable and power adapter.
- **Ethernet.** Connect the Arlo Q Plus camera to your router with Ethernet, but power the camera with the included micro USB cable and power adapter.

## Connect With PoE

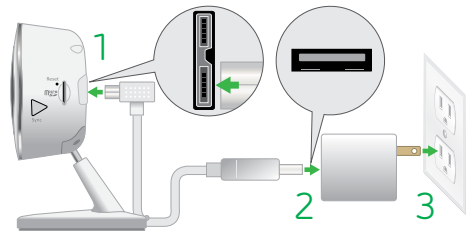
1. Connect the PoE adapter to the camera.
2. Connect your own Ethernet cable to the PoE adapter.
3. Connect the other end of the Ethernet cable to your PoE switch.



4. Go to *Get the App* on page 10 to continue installing your camera.

## Connect With WiFi

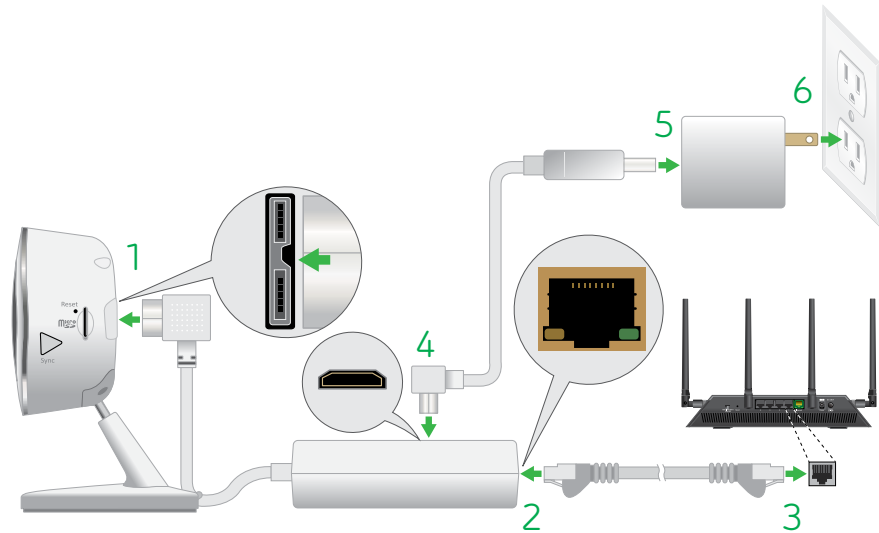
1. Connect the micro USB cable that was included with your Arlo Q Plus camera to the larger half of the connector on the back of the camera.
2. Connect the other end of the micro USB cable to the power adapter.
3. Plug the USB adapter into a wall socket and wait for the camera LED to blink amber.



4. Go to *Get the App* on page 10 to continue installing your camera.

## Connect With Ethernet

1. Connect the PoE adapter to the back of your camera.
2. Connect your own Ethernet cable to the PoE adapter.
3. Connect the other end of the Ethernet cable to an Ethernet switch or a router.
4. Connect the included micro USB cable to the side of the PoE adapter.
5. Connect the other end of the micro USB cable to the USB power adapter.
6. Plug the USB adapter into a wall socket.
7. Go to [Get the App](#) on page 10 to continue installing your camera.



## Get the App

For the best experience, download the Arlo Q Plus app for your smartphone by scanning this QR code or searching for "Arlo" in the app store.



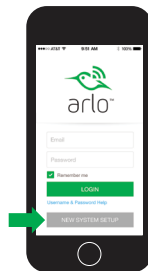
<https://arlo.netgear.com>



## Get a New Account

Already have an account? See [Add Devices to an Existing Account](#) on page 12.

Launch the app from your smartphone and tap the **New System Setup** button. Follow the onscreen instructions.



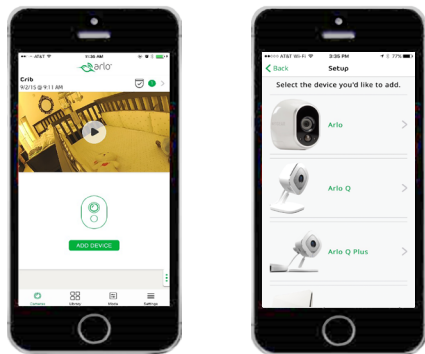
Or from a computer, visit <https://arlo.netgear.com> and click the **New System Setup** button. Select **Arlo Q Plus**.



## Add Devices to an Existing Account

Launch the Arlo Q Plus app and log in to your account.

Tap the **Add Device** button, select **Arlo Q Plus**, and follow the onscreen instructions.



## Connect Your Camera

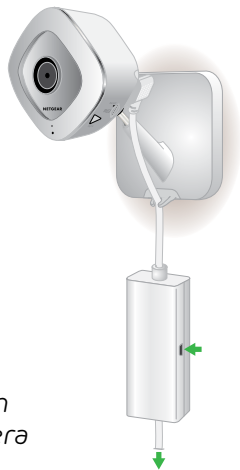
Follow the onscreen instructions from either the Arlo Q Plus app or from a computer to connect your camera directly to your router.

**Note:** *If you own an Arlo wire-free system, do not connect your Arlo Q camera to the Arlo base station.*



## Place Your Camera

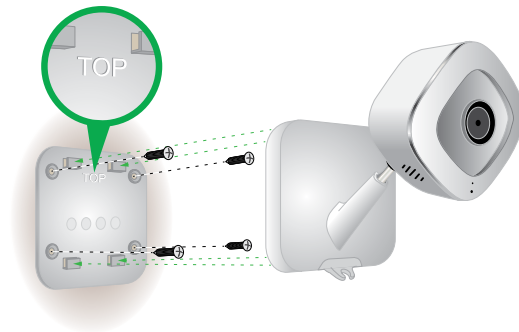
You can place your camera on a shelf or other flat surface, or you can mount it on the wall.



**Note:** The camera base and the PoE adapter each include a magnet that can help position the camera and the adapter on metal surfaces.

If you are mounting the camera on a wall, place the wall plate and secure it in place with four screws.

Slide the camera into the wall plate.



# You're Done!











Congratulations! Your Arlo Q Plus camera is set up and ready to go.

For information about the SD card slot, refer to the Arlo Q Plus User Manual [http://www.downloads.netgear.com/files/arlo/arlo\\_q\\_um\\_en.pdf](http://www.downloads.netgear.com/files/arlo/arlo_q_um_en.pdf).

To view useful tutorial videos, find troubleshooting tips, or get support, visit [support.arlo.com](http://support.arlo.com).

# Camera LED Guide



-  **Solid amber**  
The camera is booting.
-  **Solid blue**  
The camera is powered on and is connected to Arlo servers.
-  **Solid purple**  
The camera is connected to a WiFi network. However, it is not connected to the Internet.
-  **Slow blinking amber**  
The camera is powered on and is ready for setup.
-  **Slow blinking blue**  
The camera is connecting to a WiFi network.
-  **Blinking purple**  
The camera is too far away from the router.
-  **Fast blinking amber**  
The camera is not connected to a WiFi network yet.
-  **Fast blinking blue**  
The camera is connecting to Arlo servers.
-  **Blinking blue/amber**  
A firmware update is in progress. DO NOT TURN OFF THE CAMERA.
-  **Off**  
The camera is powered off.

Notes

Notes



©NETGEAR, Inc., NETGEAR, the NETGEAR Logo, and Arlo are trademarks of NETGEAR, Inc.

## **Compliance**

For the current EU Declaration of Conformity, visit

[http://kb.netgear.com/app/answers/detail/a\\_id/11621/](http://kb.netgear.com/app/answers/detail/a_id/11621/).

For regulatory compliance information, visit

<http://www.netgear.com/about/regulatory/>.

# **NETGEAR®**

350 East Plumeria Drive  
San Jose, CA 95134, USA

April 2016



201-19597-02



NETGEAR INTL LTD  
Building 3 University Technology Centre  
Curraheen Road, Cork, Ireland