



YOFULY

EC REP

Company: Qing UG(haftungsbeschränkt)
Address: Undinestr.7, 12203 Berlin
E-mail: pmdheinrich@gmail.com

Manufacturer: Guangzhou Tuguan Electronic Technology Co Ltd
Address: 2nd Building, No. 38 Baiyun Avenue North Baiyun
District, Guangzhou, China



USER MANUAL

DIAMOND MICRODERMABRASION MACHINE



Contents

1. Preface	1
2. FAQ	2
3. Device Structure Diagram	3
4. Preparation Before Treatment	4
5. Operating Guide	5
5.1 Recommended Vacuum Intensity on Treatment Area	5
5.2 Treatment Schedule Table	6
6. Diamond Tips	8
7. Attentions	9
8. Specification	10
9. Package Lists	11

Preface

Dear users :

Since the Micro-crystal Dermabrasion was first designed by Italian Florence 's Mattioli, it has now been over 20 years. This kind of technology named the best method of medical beauty was originally only supplied to the dermatology experts and doctors, and later to more and more SPA Houses & Beauty Salons. It has been successfully developed in Europe for several years, curing thousands of patients with the extremely satisfactory effect.

It is a creative improvement of the Micro-crystal Dermabrasion. The Diamond Dermabrasion provides a non-surgical skin refinish procedure by using sterile diamond heads to abrade/rub off the top skin layer, then suck away the particles along with any dirt and dead skin. This procedure removes skin debris, imperfections, blemishes, wrinkles, and unwanted pigmentation on the skin.

Appropriate usage of Diamond Dermabrasion, accompany by skin products that penetrate through the top skin layer that reach the dermis level, helps to replenish natural nutrients, restore cell activity, and promote skin health. All of the tips are made delicately and can directly contact skin for a safe and hygienic treatment. Crystal cartridges or air pumps are not required to deliver the crystals to the skin, with no scarring and no harm to the skin. The result after Microdermabrasion treatment is to get your skin silky, smooth, soft, shiny, and healthy.

FAQ



Q: Why does the equipment have no suction power?

A: Twist the button to adjust the intensity, the speedometer will not move, only when the tip touches the skin, does the power show it moves on the speedometer.

Q: How often you need to use it?

A: Use it about 2-3 times a week to make the skin smooth for a long time, but don't slide 2-3 times in the same area.

Q: What is the effect after use?

A: Mainly for deep exfoliation, improving skin radiance, removing dull and rough patches, Everyone has different skin condition. the effect is also different from person to person.

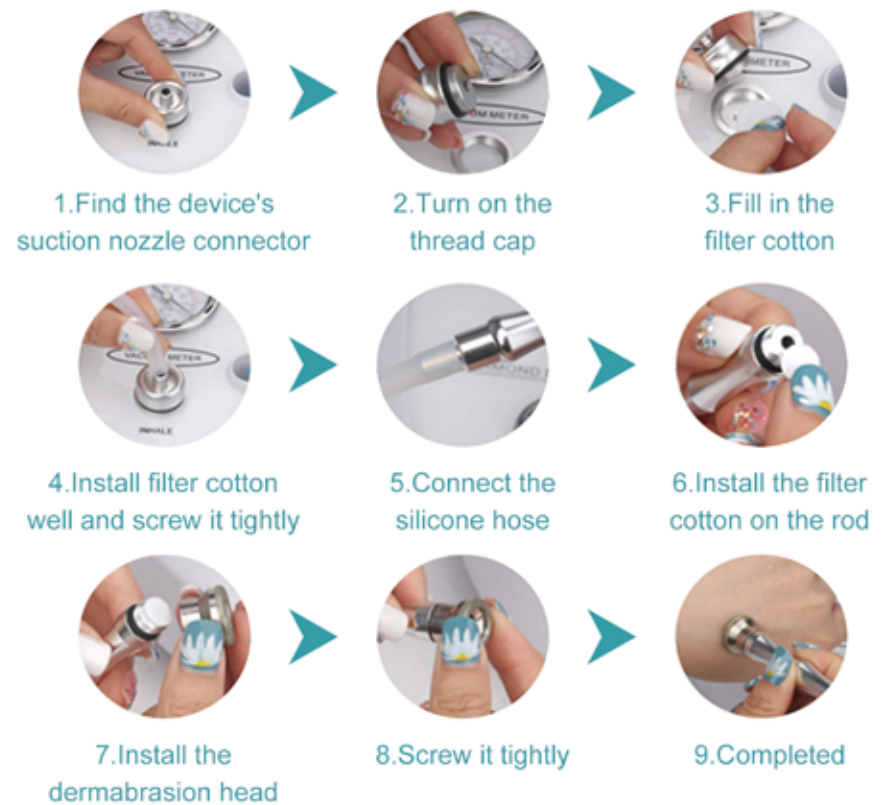
Device Structure Diagram



3

Preparation before treatment

1. A consultation included the examination of the skin, a plan for treatment.
2. Operator should wear vinyl gloves and a face mask.
3. On oily or acne skin, a steamer may be used prior to the treatment, or a degreasing lotion may be applied prior to the cleanser.
4. Cleansing the skin with Cleansing gel or water, then wipe off with filter cotton, allowing the skin to dry.
5. Install filter cotton before use.



Note: If the machine doesn't work after the power connection, please check the fuse and replace it.



4

Operating Guide

(We recommend you refer to the video on the website)

1. Push in the movable ring of copper nozzle at the hand piece, and pull out the 8x5 size vacuum hose. Then push in the black plastic ring on the vacuum hose.
2. Put a drop of cream or milk lotion on the vacuum hose nozzle, push in the movable ring and insert in the vacuum hose to the limit.
3. Insert a cotton swab into the Diamond Head, fix the Diamond Head on the hand piece. Remove the filter cotton after every treatment.
4. Turn on the power switch.
5. Adjust the Vacuum intensity by Vacuum Regulator according to the following reference table, the intensity displays on Vacuum gauge and check with the client for comfort.

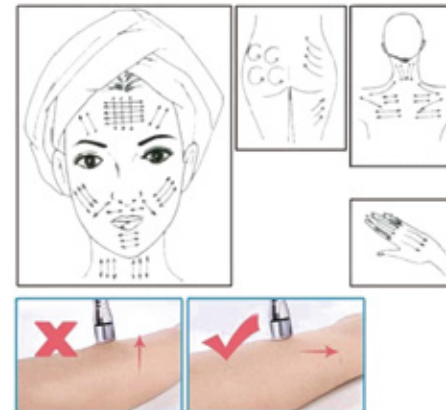
5.1 Recommended Vacuum Intensity on Treatment Area

Treat Area	Face	Forehead	Chest	Nose	Neck	Near Eye Area
Normal Skin(inHg)	12-22	12-22	15-20	10-15	18-18	8-12
Sensitive Skin(inHg)	8-12	10-12	15-18	10-14	10-15	8-10



5.2 Treatment Schedule Table

Treatment	Frequency (days)	Total Visits
Face Peeling	6-10	3-5
Fine Lines	7-13	6-8
Neck	12-14	3-5
Acne Scars	7-12	8-10
Hyperpigmentation	7-12	8-10



6. Use the incline area of wand to contact with the skin surface, proceed with a slow sliding motion. leave it at one area for too long, otherwise it will cause harm to the skin.

7. Adjust the crystal flow rate by the Vacuum Regulator slowly from minimum to maximum. For commonly use, do not set the flow rate to maximum unless it is necessary, it is for better comfort intensity.

8. Gently stretch the skin with thumb and finger and glide the wand 2 to 3 times over the area being treated. Then cross again in different directions to prevent steraking lines as in the reference picture. Brush strokes or polishing motions may be used in different areas.

9. After treatment, brush off any remaining dead skin with a soft brush and rinse with damp sponges or damp cool towel.

10. Allow skin to dry then apply desired skin product.

11. Clean the Diamond Head, use toothbrush or filter cotton damped with a little alcohol to wipe off the dirty impurity, and then use UV light or high temperature for sterilization.

Diamond Tips

Depending on Your Skin's Thickness,
Choose the Appropriate Diamond Tips.



Micro beauty head

(D-120)

For body scar or
striae of pregnancy



Micro beauty head

(D-120)

For blackhead and
acne scar on the face



Micro beauty head

(D-180)

For neck/knee/elbow
skin exfoliate



Micro beauty head

(D-180)

For body scar or
striae of pregnancy



Micro beauty head

(D-180)

For blackhead and
acne scar on the face



Micro beauty head

(D-200)

For blackhead on
nose and fine pores



Micro beauty head

(D-240)

For body lines and
wrinkles on the face



Micro beauty head

(D-240)

For body lines and
wrinkles on the face



Micro beauty head

(D-240)

For fine lines, nose acne,
pimples on eyebrows

Attentions

Never operate this equipment on a person that suffers from the following:

1. Heart disease
2. Damaged, inflamed, or infected for skin.

Do not use on these areas:

1. Sensitive skin
2. Skin rash
3. Damaged, inflamed, or infected Skin.
4. Surgicl scar less than 12 months old.
5. Skin swollen.
6. The probes can not point to eye ball.
7. Genitals.

Specification

Power: 45W-50W

Current: 2A

Voltage: 240V/50/60Hz

220V/50Hz

115V/60Hz

Package Lists

Diamond Microdermabrasion Machine x 1

PVC Vacuum Hose 8*5 x 1

Stainless Steel Wand x 3

Diamond Tip x 9

O-rings x 1

Fuse x 1

11mm Cotton Filter x 1 pack(50pcs)

18mm Cotton Filter x 1 pack(50pcs)

Power Cord x 1

User Manual x 1

