

User Manual of Product 1:

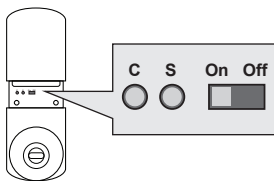
MiLocks TKK-02SN Tkk-Sn Digital Door Knob Lock with Electronic Keypad for Interior Doors, Satin Nickel

User Manual of Product 2:

MiLocks TKK-02OB Digital Door Knob Lock with Electronic Keypad for Interior Doors, Oil Rubbed Bronze, Oil-Rubbed Bronze

Know Your Program Controls

** Illustrations may not be exact representation of product. Does not effect programming process.



Programming Panel:

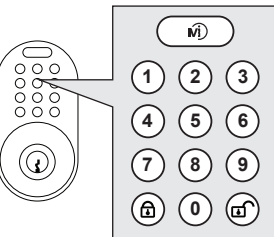
Found under battery cover of back module.

C: Clear

S: Set

On|Off Switch: Has two functions,

- (a) If **Switch** is on, toggles Auto Lock; after 5-10 seconds in the unlock position, thumbturn will engage and lock automatically.
- (b) **Switch** needs to be **OFF** during any programming of codes.



Keypad:

Mi Logo Button (Top Button): Enables keypad back lighting.

1-9, 0 Buttons: Used to enter numerical key codes.

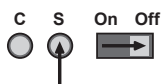
Lock Button: Electronically engages latch to lock position.

Unlock Button: Has two functions,

- (a) Pressing the Unlock button after entering saved Keypad Code to electronically engage latch to unlock position.
- (b) During programming, the unlock button is used to confirm key codes being set or cleared.

**PROGRAM:
Add A Code To Lock**

- (a) Set **Switch** to **OFF**
- (b) Press the **S Button**.



- (c) Use **keypad** to enter a **2-8 digit code**



- (d) Press the **Unlock Button** to confirm.
2 beeps: Confirmed
3 beeps: Try again



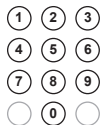
- (e) Refer to **Function Test** on next page

**PROGRAM:
Delete A Code From Lock**

- (a) Set **Switch** to **2**
- (b) Press the **C Button**.



- (c) Use **keypad** to enter an existing key code.



- (d) Press the **Unlock Button** to confirm.
2 beeps: Confirmed
3 beeps: Try again



- (e) Refer to **Function Test** on next page

**PROGRAM:
Delete ALL Codes**

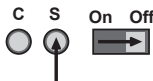
- (a) Set **Switch** to **2**
- (b) Press and **Hold C Button** until **2 beeps**.



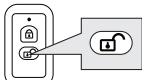
10 seconds

**PROGRAM:
Pairing RF Remote (QF or XF Model Only)**

- (a) Set **Switch** to **2**
- (b) Press the **S Button**.



- (d) Press the **Unlock Button** on remote to confirm.
2 beeps: Confirmed
3 beeps: Try again



- (e) Refer to **Function Test** on next page

PROGRAM (cont.):

Function Test: If a passcode has not been successfully programmed, the lock will not operate using the keypad. To check if a passcode has been successfully programmed in the memory:

1. Manually unlock door lock and open the door. Make sure door is kept open during Function Test.
2. Press the **LOCK** button on the keypad 1 time and listen to the beeps:

- **1 Beep, Engagement:** If lock beeps 1 times and latch is engaged successfully, at least 1 code has been saved to lock memory.
- **2 Beeps:** If the lock beeps 2 times and latch is not engaged, one of two issues:
 - Set 1|2 switch to other number.
 - Passcode not properly set. Refer to programming instructions on adding a passcode.
- **Rapid Beeping:** If the lock produces a set of rapid beeps and/or partially engages latch, you have low batteries. Replace the batteries with a set of 4 premium "AA" alkaline batteries.

** If issue persists, please contact tech support. **

TROUBLESHOOTING

Low Batteries (Most Common Issue): If the lock produces a set of rapid beeps and/or partially engages latch, you have low batteries. To avoid any difficulties during set up, make sure you are using brand new AA alkaline batteries. Using a battery tester is not recommended. Always have traditional keys on hand.

Driver Bar and/or Thumb-turn Position: In step 3 of the installation, you are instructed to position the driver bar in the vertical position while the deadbolt is retracted. In step 5 of the installation, you are instructed to position the thumb turn according to which side the door latch faces. If these parts are not positioned according to the instructions, you will encounter issues such as the lock only working with the key in the cylinder, a jammed thumb turn, or a key that will not release from the cylinder. The best thing to do is remove the lock from the door and install the lock according to the instructions provided.

Loose Keypad Connection: If not connected securely, the keypad wire harness connection may come loose and cause some of the numbers to operate inconsistently. To confirm your door lock issue is not being caused by a loose keypad connection, press every number on the keypad and confirm every button beeps when pressed.

Unresponsive Keypad Buttons: If some of the numbers are not beeping, remove the back module (part B) and inspect the wires for any pinches or tears. Make sure to check the wires coming from the keypad as well. Disconnect the wire harness and make sure the pins in the male connection are not bent out of alignment. Reconnect your wires and confirm every button on the keypad beeps when pressed. If you are still having keypad issues after following our troubleshooting guide, call us for a replacement under warranty.

WARRANTY

MiProducts Corporation warrants to the original residential user of this product that it will be free from defects in materials and workmanship, under normal use, for 1 year from the date of purchase. User must provide a copy of original purchase receipt. This warranty does not cover abuse or misused products or products used in commercial applications. All mechanical components carry a limited warranty, for a period of 25 years from the date of purchase. The finish of the exterior of this lock carries a limited warranty of the lifetime of the unit against deterioration due to normal weather conditions. This warranty does not apply to locks that have been improperly installed, modified, put to a use other than designed, or subjected to acts of God (such as floods, lightning, earthquakes, etc.) This warranty is limited to repairing or replacing of this lock only at MiProducts Corporation's sole discretion. MiProducts Corporation will NOT be liable for the cost of installing, removing, nor reinstalling this product, nor direct, indirect, or consequential damages to persons or property resulting from the use of this product. This warranty only covers the cost of replacement parts, it does not cover shipping & handling fees.

PLEASE CONTACT OUR TECHNICAL SUPPORT IF:
-NEED ASSISTANCE INSTALLING OR PROGRAMMING YOUR LOCK
- LOCK IS NOT WORKING PROPERLY AFTER TROUBLESHOOTING
- OR NEED TO FILE A WARRANTY CLAIM

1-800-355-0157

Mon-Fri 9:00am to 5:00pm PST (English & Spanish)

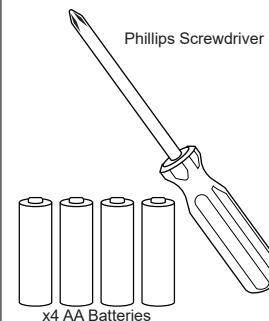
**ALTERNATIVELY, FILE WARRANTY CLAIMS AT:
www.milocks.com/warranty**

**INSTALLATION
MANUAL**

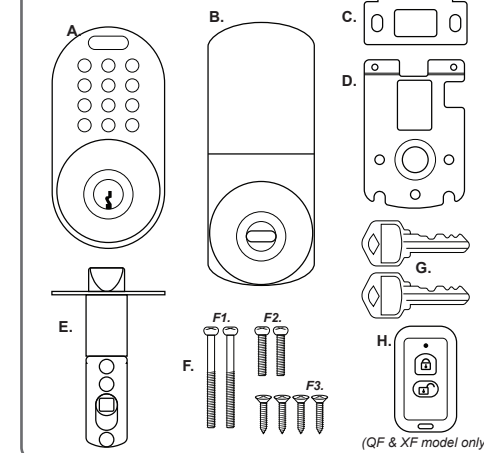
**KEYPAD ENTRY
DEADBOLT LOCK**

MODELS:
BLEKK, CKK, DKK,
TKK, QKK, XKX, ZVK

**REQUIRED TOOLS
(NOT INCLUDED)**



PACKAGE CONTENTS



DISCLAIMER:

- Carefully read instructions in their entirety before installing.
- Always use proper safety measures during the install of this product.
- Always have traditional keys on hand in case of electronic failure.
- Only use brand new, popular brand, alkaline non-rechargeable AA batteries.
- Remove batteries from product when storing for extended periods of time.
- Back Module (B) needs to be protected from weather.

PARTS LIST:

- A** Front Module
- B** Back Module
- C** Strike Plate
- D** Mounting Plate
- E** Extendable Latch
- F** Screws
F1. Mounting Plate Screws
F2. Back Module Screws
F3. Strike Plate/Latch Screws
- G** Traditional Keys
- H** RF Remote (QF & XF Model Only)

** Illustrations may not be exact representation of product

PRODUCT REGISTRATION

Although we hope you never have to deal with a warranty claim during the use of our product, you should submit a product registration to validate the warranty. This keeps it on record with us so you don't have to save a receipt or record of any kind. Just give us a call and we will take care of you.

**REGISTER YOUR PRODUCT AT:
www.milocks.com/product-registration/**

WARNING

- Do NOT use rechargeable batteries (Li-On, nickel blends, rechargeable alkaline).
- Do NOT use non-rechargeable zinc blend batteries.
- Do NOT mix old and new batteries.
- Do NOT puncture or damage batteries. Electrolyte leakage from the batteries is corrosive and can cause serious harm to the eyes or skin. If swallowed, the electrolyte can be toxic.
- Do not dispose of batteries in fire as they may explode. Please follow your local battery disposal procedure.

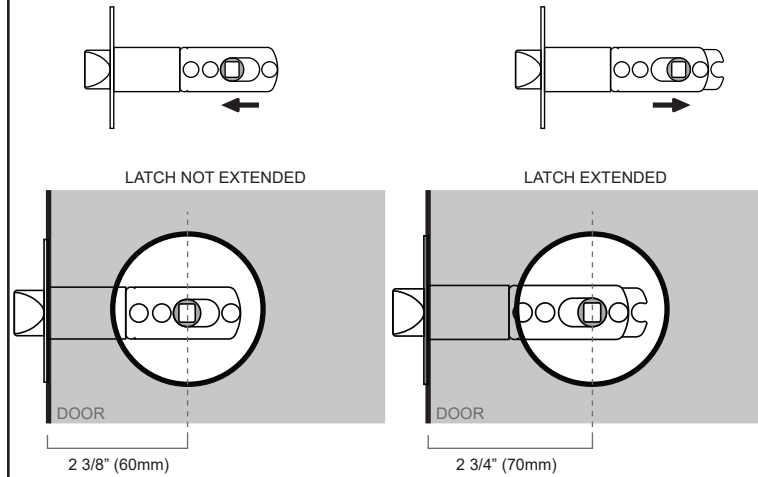


Ignoring disclaimer or warnings may cause electrical issues to your MiLocks item. Issues may include: Overheating, leakage, discharge, voltage fluctuations, failed engagement of internal mechanism and bodily harm. MiProducts Corp is not liable for product failures or health issues due to product or battery negligence and/or misuse.

1 Parts: E

Adjusting Latch

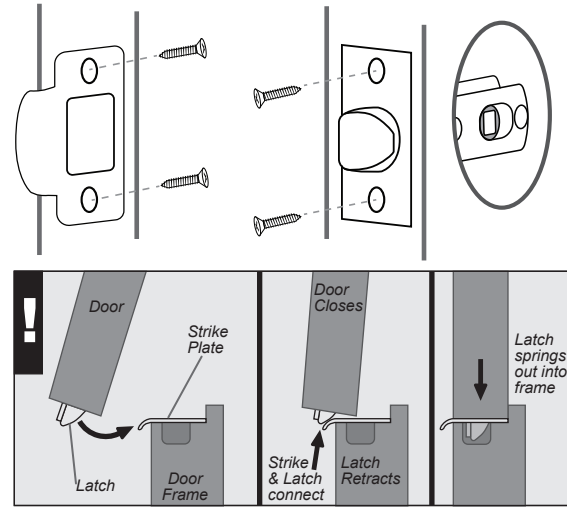
For doors with bore holes **2 3/8" (60mm)** from door edge, shorten latch by:
Pushing Drive Slot in (fig. A)
For doors with bore holes **2 3/4" (70mm)** from door edge, extend latch by:
Pulling Drive Slot out (fig. B)



2 Parts: C, E, F3

Secure Strike Plate and Latch

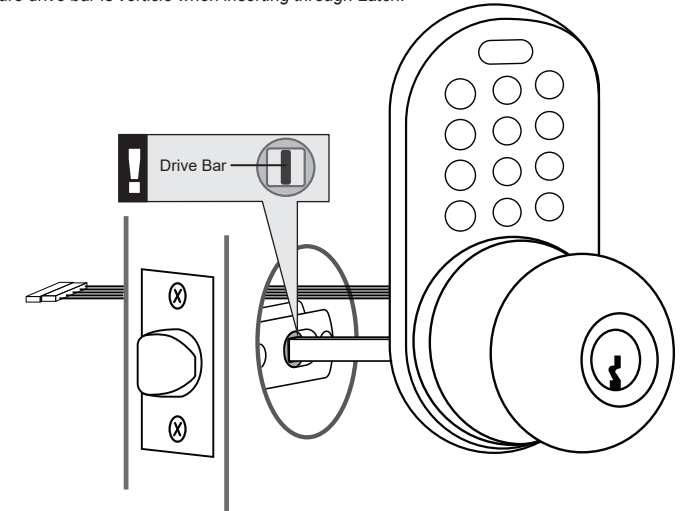
(1) Use Screws (F3) to secure Strike Plate (C) to door frame.
(2) Use Screws (F3) to secure Latch (E) To door
(!) *Install Latch and Strike Plate in a way where the lip from the plate and the angled slope from the latch meet, retracting the latch as door closes.*



3 Parts: A, E

Front Module Installation

(1) Run Drive Bar through the Latch (E).
(2) Run Connector Wire through bore hole of door.
(!) *Be sure drive bar is vertical when inserting through Latch.*



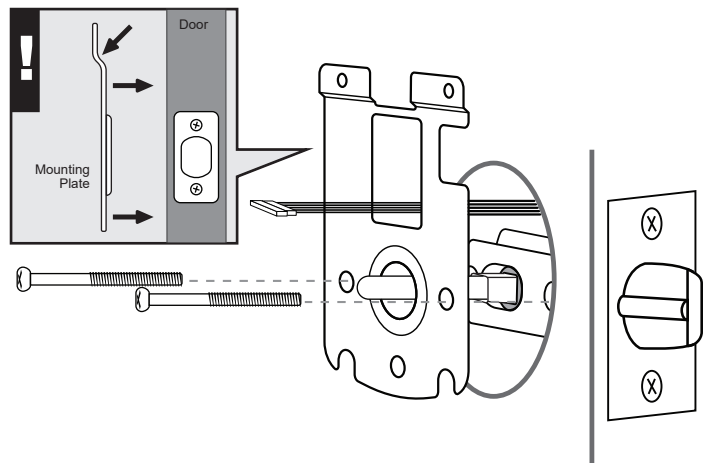
** Illustrations may not be exact representation of product. Does not effect installation.

4 Parts: D, F1

Mounting Plate

On opposite side of door from front module:

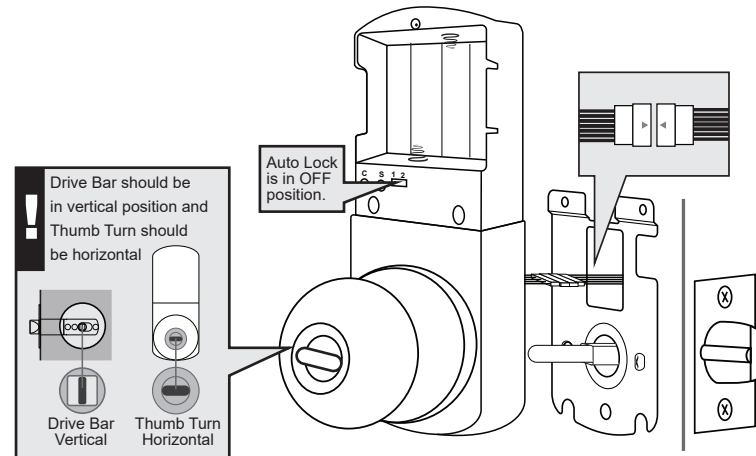
(!) *The top screw holes on Mounting Plate (D) should be angled away from door surface.*
(1) Run Drive Bar and Wire Connector through Mounting Plate (D) as shown.
(2) Use Screws (F1) to secure Mounting plate and Front Module (A).



5 Parts: B

Connect Wires

(1) Remove Battery Cover from Back Module before continuing:
(2) Connect the White Wire Tabs from the Front Module (A) and back Module (B) together.
(!) *Before continuing: Drive bar should be oriented vertically and thumb turn should be oriented horizontally.*

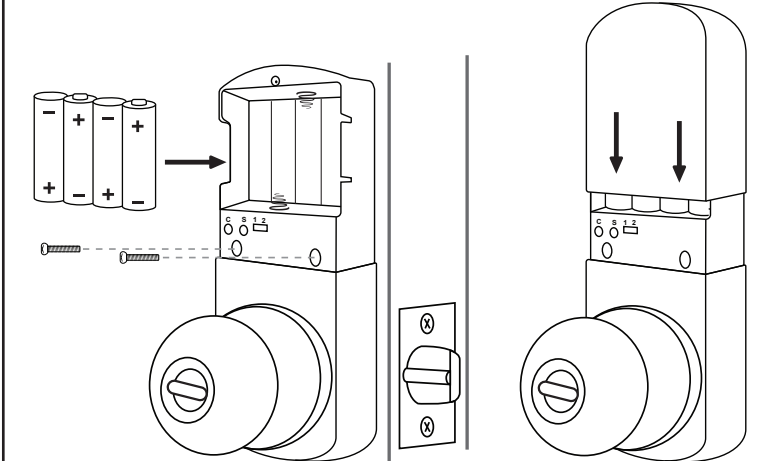


** Illustrations may not be exact representation of product. Does not effect installation.

6 Parts: B, F2

Connect Wires

(1) Insert Drive Bar into Back Module's (B) Thumbturn Slot.
(2) Secure with Screws (F2).
(3) Install brand new 4x AA batteries
(4) Place battery cover back on.



** Illustrations may not be exact representation of product. Does not effect installation.

KEYPAD PROGRAMMING

Delete All Codes *(Recommended for initial set up):*

Press and hold C button and wait for a series of confirmation beeps (continuous beeping). You will have to hold the C button for about 10-15 seconds.

Add a Code

Press the "S" button once

Enter a 2-8 digit passcode followed by the unlock button

Within 5 sec.

2 Beeps = Success
3 Beeps = Try Again
0 Beeps = Go to Troubleshooting

Delete a Code


Press the "C" button once


Enter the code you wish to delete followed by the unlock button


Within 5 sec.

2 Beeps = Success
3 Beeps = Try Again
0 Beeps = Go to Troubleshooting

OPERATING INSTRUCTIONS:

TO LOCK: Press the LOCK button  once

TO UNLOCK: Enter code followed by the UNLOCK button 

TO LIGHT KEYPAD: Press the "Mi" button  once

AUTO-LOCK Switch: ON (Locks automatically after 10 sec.)

TROUBLESHOOTING

Low Batteries (Most Common Issue):

If the lock produces a longer set of rapid beeps and either locks or does not lock the door, you have low batteries. To avoid any difficulties during set up, make sure you are using brand new AA alkaline batteries. Using a battery tester is not recommended.

Loose Keypad Connection:

If not connected securely, the keypad wire harness connection may come loose and cause some of the numbers to operate inconsistently. To confirm your door lock issue is not being caused by a loose keypad connection, press every number on the keypad and confirm every button beeps when pressed.

If some of the numbers are not beeping, remove the back module (*part B*) and inspect the wires for any pinches or tears. Make sure to check the wires coming from the keypad as well. Disconnect the wire harness and make sure the pins in the male connection are not bent out of alignment. Reconnect the wires and confirm every button on the keypad beeps when pressed.

If you are still having keypad issues after following our troubleshooting guide, call us for a replacement under warranty.

Function Test:

If a passcode has not been successfully programmed, the lock will not operate using the keypad. Lets check if a passcode has been successfully programmed in the memory:

1. Unlock the knob and open the door. Make sure you keep the door open while troubleshooting.

2. Press the LOCK button on the keypad 1 time and listen to the beeps:

- If the lock beeps 3 times and does not lock, it does not have a passcode set in its memory. Refer to the programming page for information on adding a passcode.
- If the lock produces a longer set of rapid beeps and either locks or does not lock the door, you have low batteries. Replace the batteries with a set of 4 premium "AA" alkaline batteries.
- If the lock beeps 2 times then locks, it has at least 1 passcode stored in its memory and is operating correctly.

If you are unable to get your lock to work please give us a call during business hours.

US Live Tech Support: 1-800-355-0157 M-F 9am - 5pm PST (English & Spanish)
Warranty shipments are always shipped promptly.

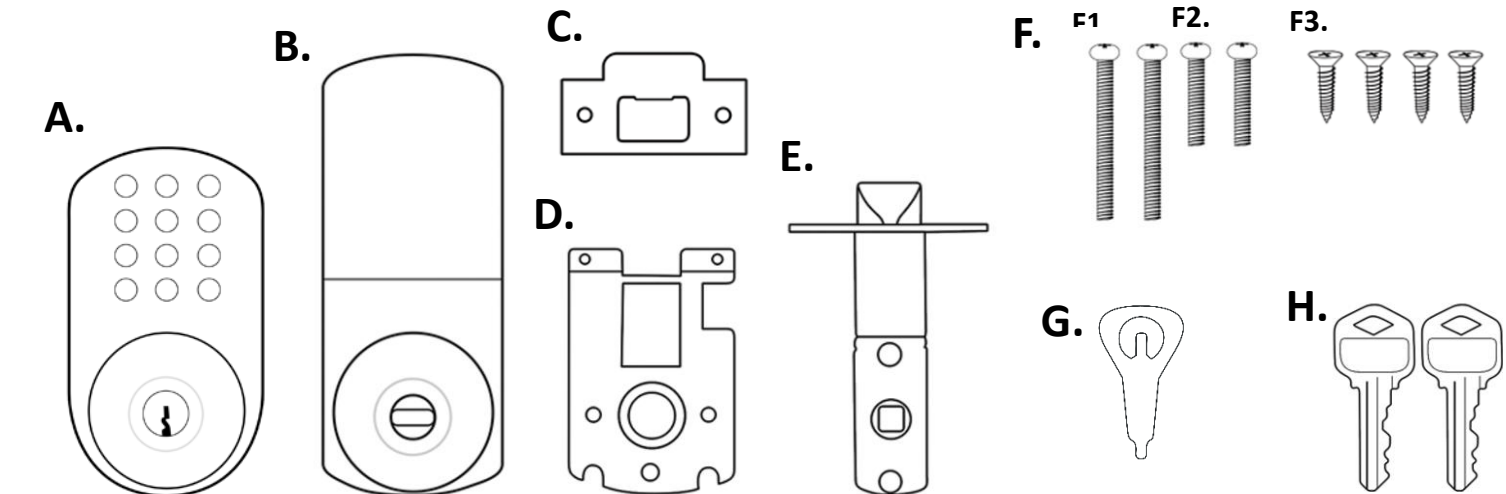
WARRANTY

MiProducts Corporation warrants to the original residential user of this product that it will be free from defects in materials and workmanship, under normal use, for 1 year from the date of purchase. User must provide a copy of original purchase receipt. This warranty does not cover abuse or misused products or products used in commercial applications. All mechanical components carry a limited warranty, for a period of 25 years from the date of purchase. The finish of the exterior of this lock carries a limited warranty of the lifetime of the unit against deterioration due to normal weather conditions. This warranty does not apply to locks that have been improperly installed, modified, put to a use other than designed, or subjected to acts of God (such as floods, lightning, earthquakes, etc.) This warranty is limited to repairing or replacing of this lock only at MiProducts Corporation's sole discretion. MiProducts Corporation will NOT be liable for the cost of installing, removing, nor reinstalling this product, nor direct, indirect, or consequential damages to persons or property resulting from the use of this product. This warranty only covers the cost of replacement parts, it does not cover shipping & handling fees.

To implement this warranty please give us a call during business hours at 1-800-355-0157, or visit www.milocks.com.



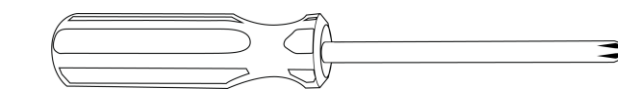
Model TTK



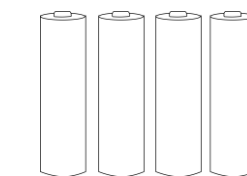
GENERAL WARNINGS & CAUTIONS:

The back module (part B.) must be protected from the weather.

Tools Required *(not included):*



X1 Phillips Screwdriver



X4 AA Batteries

Auto-Lock Switch on Part B.:

On the back module (part B), there is a switch labeled "On-Off" which controls the auto-lock function.

On = Automatic lock after 10 seconds. (shortens battery life up to 50%)

Off = Does not automatically lock.



For assistance with assembly or installation, parts and customer service, call:
1-800-355-0157 (English & Spanish)
9am – 5pm PST Mon. – Fri.
North America

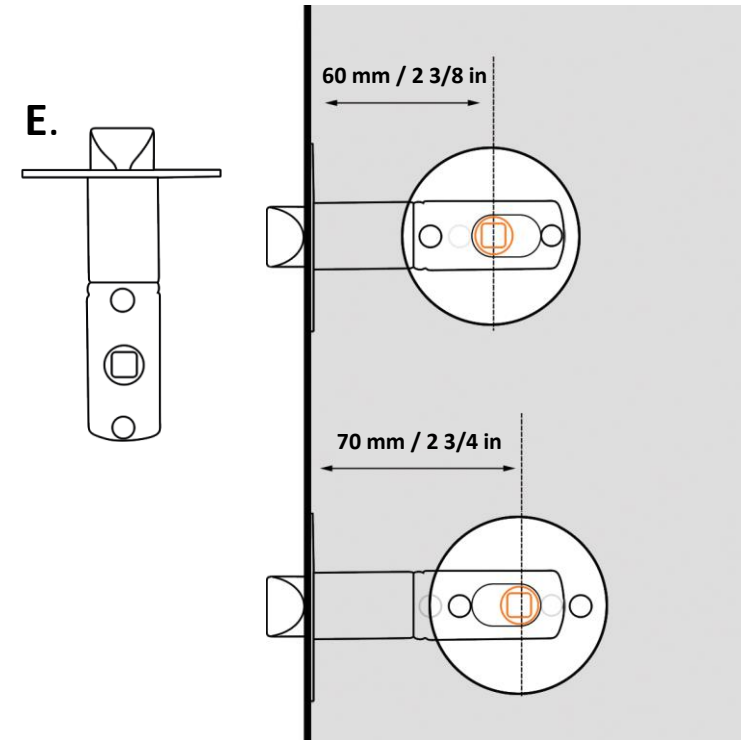
Battery Precautions

- Do not mix old with new batteries.
- Do not use rechargeable batteries.
- Remove batteries from product when storing for extended periods of time.
- Do not dispose of batteries in fire as they may explode. Please follow your local battery disposal procedure.
- Do not puncture batteries. Electrolyte leakage from the batteries is corrosive and can cause serious harm to the eyes or skin. If swallowed, the electrolyte can be toxic.
- Do not allow conductive materials such as jewelry or metal tools to make contact with the batteries which may cause a short circuit. With a short circuit, the batteries and conductive material can become extremely hot and cause burns.

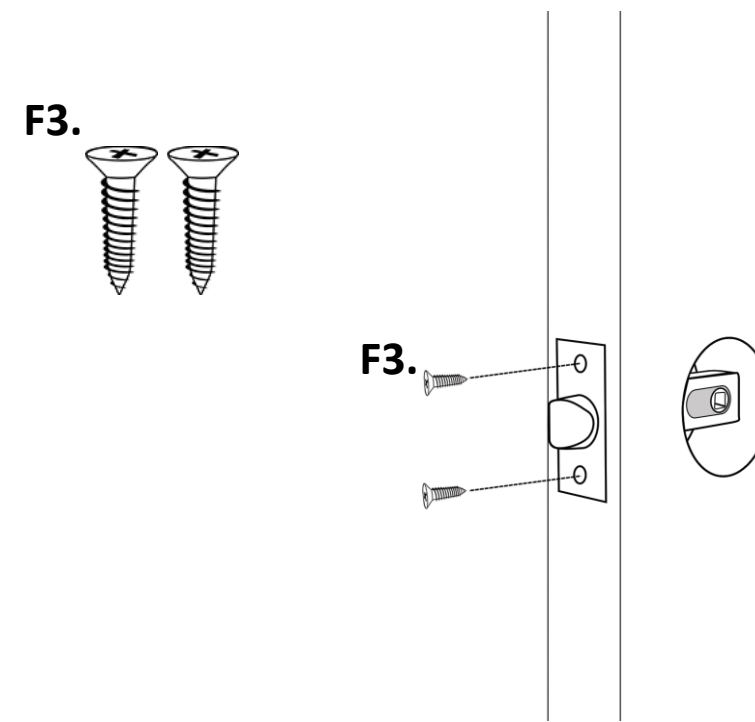
Register Your Product

- Although we hope you never have to deal with a warranty claim during the use of our product, you should submit a product registration to validate the warranty. This keeps it on record with us so you don't have to save a receipt or record of any kind. Just give us a call and we will take care of you.
- Register at www.milocks.com

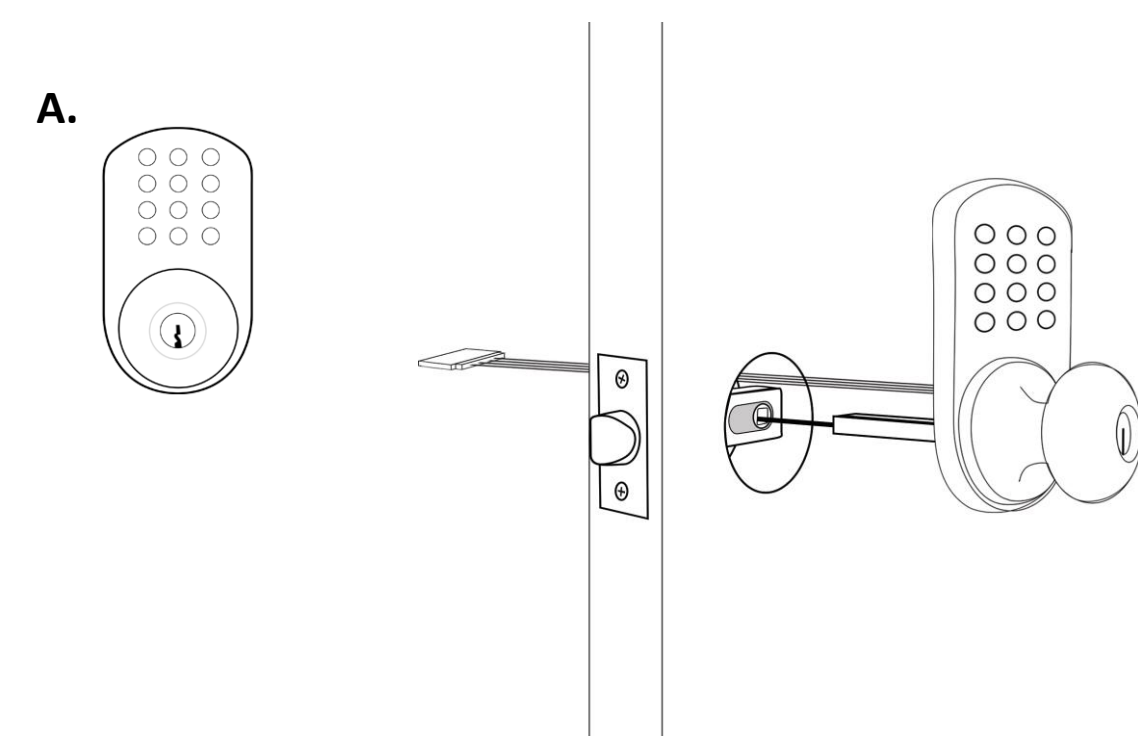
1. Adjust Latch Backset



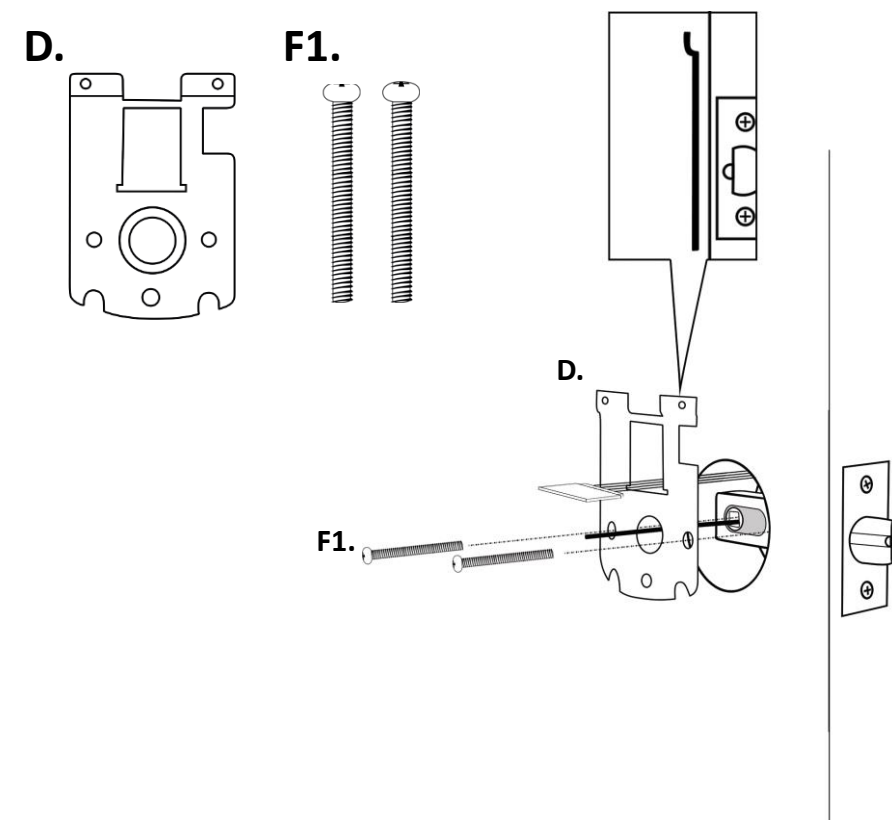
2. Install Door Latch



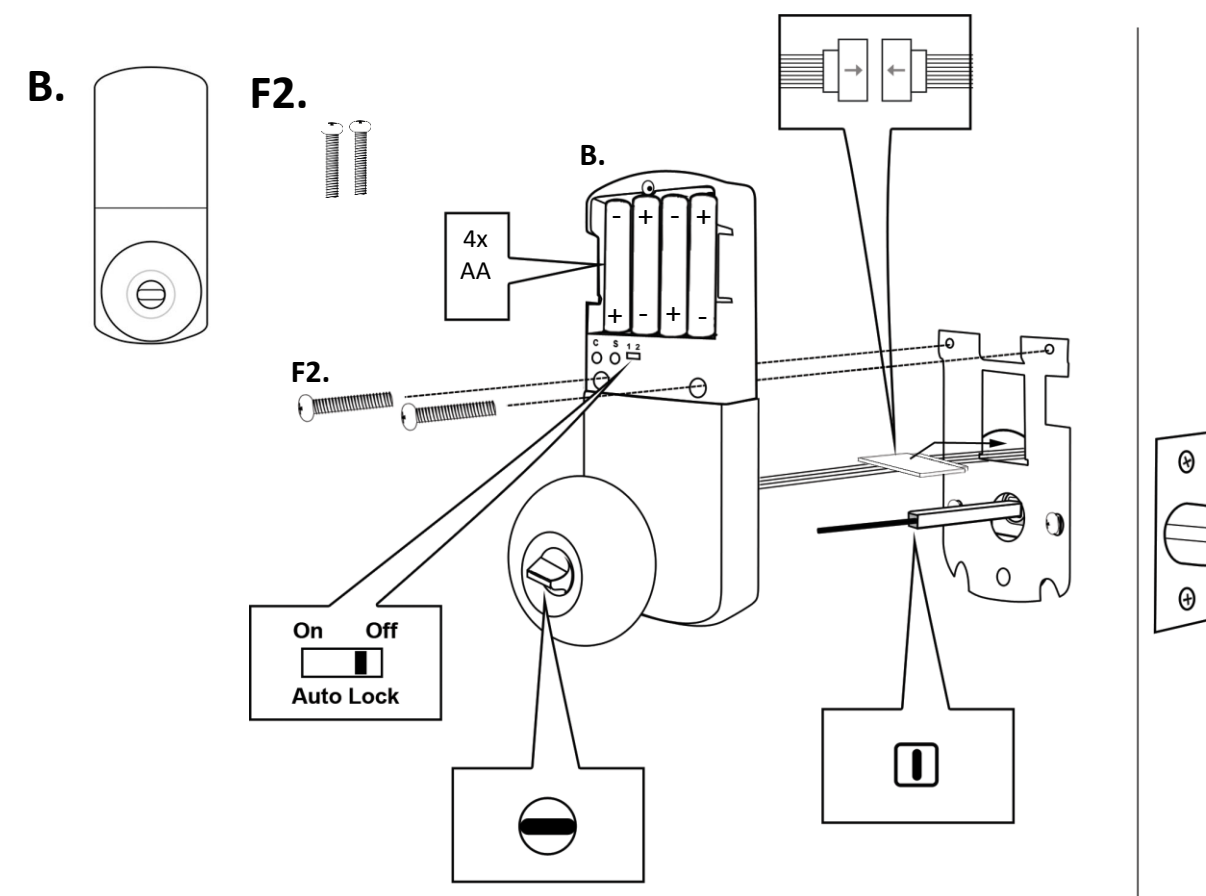
3. Mount Front Module



4. Fasten Back Mounting Plate



5. Mount & Fasten Back Module



6. Install Battery Cover

