

Getting the most out of your  
Holen Sie das Meiste heraus aus Ihrem  
Tirez le meilleur de votre  
Aprovecha al máximo tu  
Come utilizzare al meglio la  
Haal het meeste uit je

3Doodler<sup>®</sup>  
create+

#WhatWillYouCreate?<sup>®</sup>










Hello Bienvenue Bienvenido  
Willkommen Benvenuti Hallo

- EN** Please do not throw these instructions away. **P.1**  
(We worked really hard to make sure they were as useful and readable as possible!)
- FR** Merci de ne pas jeter ces instructions. **P.13**  
(Nous avons fait en sorte qu'elles soient aussi utiles et compréhensibles que possible!)
- ES** No tires estas instrucciones. **P.26**  
(Nos hemos esforzado para que sean lo más útiles y amenas posible).
- DE** Bitte werfen Sie diese Anleitung nicht weg. **P.39**  
(Wir haben uns wirklich sehr angestrengt, um sie so nützlich und lesbar wie möglich zu machen!)
- IT** Conservare queste istruzioni. **P.52**  
(La realizzazione di questo manuale ha richiesto un intenso lavoro al fine di offrire la massima utilità e comprensione).
- NL** Gooi deze instructies niet weg aub. (We hebben hard gewerkt **P.66**  
om deze zo gebruiksvriendelijk en leesbaar mogelijk te maken.

**the3Doodler.com**

Revised: May 11, 2018

## SECTION 1: WARNINGS

 <b>WARNINGS</b>	
	<ul style="list-style-type: none"><li>- The Nozzle of the 3Doodler Create+ can become hot. DO NOT touch the Nozzle, or you may be burned!</li><li>- DO NOT allow the Nozzle near or in contact with flammable materials.</li><li>- Inform others in the area that the Pen is hot and should not be touched.</li></ul>
	Unplug and set the Control Switch to OFF when not in use or before storing.
	Allow the Nozzle to cool completely before storing.
	The Unblocking Tool can become hot. DO NOT touch the metal part of the Unblocking Tool after using it to clean your 3Doodler Create+, or you may burn yourself!
	DO NOT use the 3Doodler Create+ near bathtubs, showers, basins or other vessels containing water. This could result in death due to electric shock.
	The 3Doodler Create+ should only be used with ABS or PLA, FLEXY plastic filament approved by us. Misuse of your 3Doodler Create+, setting your pen to the wrong heating temperature, and/or use of non-approved plastics or other materials may result in damage to your pen or injury to you, and will void your warranty. Injuries to the user may include, but are not limited to, harm sustained from inhaling substances that are not suitable for heating; or burns from flammable materials used in the 3Doodler Create+.

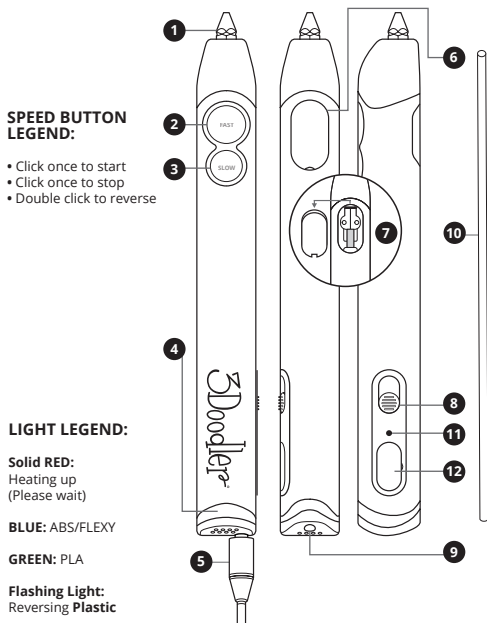
**ADULT USE ONLY.  
KEEP OUT OF REACH OF CHILDREN.**

### Disposal of this product

At the end of your 3Doodler Create+'s life, please do not dispose of it in your general household waste. In order to prevent possible harm to the environment or human health from uncontrolled waste disposal, please dispose of your 3Doodler Create+ separately in accordance with local laws and regulations. For more information on the separate collection systems for waste electrical and electronic equipment, please contact your local municipal authority. You can also contact the retailer from which you purchased your 3Doodler Create+, who may have a recycling service, or be part of a specific recycling scheme that you can use.

## SECTION 2: GETTING STARTED WITH 3DOODLER CREATE+

We created this User Manual as a step-by-step guide to get you comfortable with your **3Doodler Create+** and its features. Once you are familiar with these steps, you will be able to Doodle with confidence. Skipping steps may result in a less enjoyable time with your **3Doodler Create+**.



### SPEED BUTTON LEGEND:

- Click once to start
- Click once to stop
- Double click to reverse

### LIGHT LEGEND:

**Solid RED:**  
Heating up  
(Please wait)

**BLUE:** ABS/FLEXY

**GREEN:** PLA

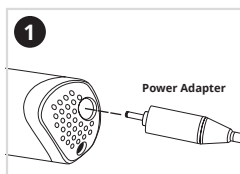
**Flashing Light:**  
Reversing **Plastic**

- |   |   |
|---|---|
| <b>1</b> <b>Nozzle</b><br>Hot end where <b>Plastic</b> is extruded for Doodling                       | <b>7</b> <b>Drive Gear</b><br>This pushes the <b>Plastic</b> through the <b>Pen</b>   |
| <b>2</b> <b>FAST Speed Button</b>   | <b>8</b> <b>Control Switch</b><br>For turning the <b>3Doodler Create+</b> <b>ON</b> and <b>OFF</b> , and selecting <b>ABS / FLX</b> or <b>PLA</b> extrusion temperature |
| <b>3</b> <b>SLOW Speed Button</b>   | <b>9</b> <b>Plastic Loading Port</b><br>Hole for inserting <b>Plastic</b> in the back of the <b>3Doodler Create+</b>  |
| <b>4</b> <b>Light</b><br>Tells you when your <b>3Doodler Create+</b> is ready for Doodling            | <b>10</b> <b>Plastic</b>  |
| <b>5</b> <b>Power Adapter</b>   | <b>11</b> <b>Temperature Adjuster</b><br>(See <a href="http://the3doodler.com/temperature">the3doodler.com/temperature</a> )  |
| <b>6</b> <b>Maintenance Cover</b><br>Allows you to look inside your <b>Pen</b> to see what's going on | <b>12</b> <b>Control Port</b>   |

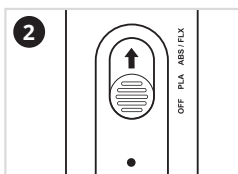
## How it Works:

The 3Doodler Create+ melts **Plastic** and uses a motor and gears (**Drive Gear**) to push it through the **Pen's** hot end (**Nozzle**) in a thin line. This process is called **extruding** or **extrusion**, and we will refer to it throughout this User Manual. Once extruded, **Plastic** cools and hardens instantly, allowing you to draw on surfaces and in the air. This User Manual will show you how!

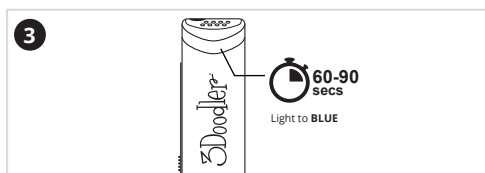
## Step 1: Turn on your 3Doodler Create+ and wait for it to heat up



Plug in the yellow hole of 3Doodler Create+.

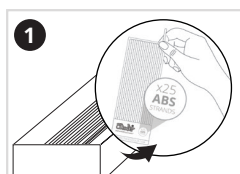


Slide **Control Switch** to **ABS / FLX**.

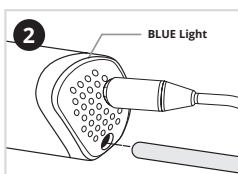


**Light** will glow **RED** while the **Pen** is reaching the temperature required to melt your **Plastic**. Once **Light** has turned **BLUE**, your **Pen** is ready to extrude **Plastic**.

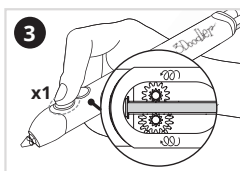
## Step 2: Load and extrude Plastic



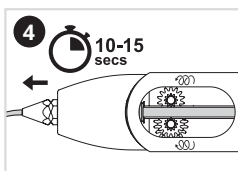
Select one strand of **ABS (MATTE) Plastic** (provided in your 3Doodler Create+ box).



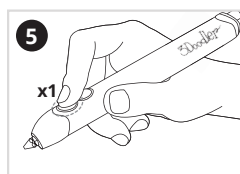
Making sure the **Light** is still **BLUE**, push the **Plastic** through the **Plastic Loading Port**.



Click **FAST** button once and release. You will hear the **Drive Gear** start.



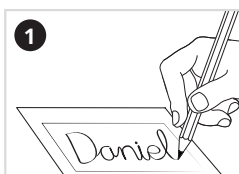
After 10-15 seconds, **Plastic** will begin extruding from the **Nozzle**. Extruded **Plastic** will harden after a few seconds.



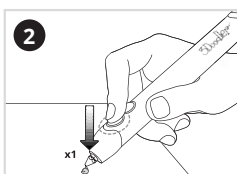
Press the **FAST** button once to stop extruding.

## Step 3: Doodle your name

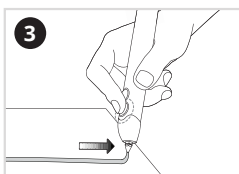
Use box below to create your first Doodle - your name!



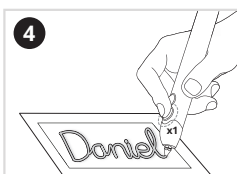
Write your name in the box provided using marker, pen, pencil, or any other writing utensil of your choice. We suggest cursive, or block with the letters connected.



Click **FAST** button once. When **Plastic** starts extruding, push **Nozzle** down into paper to get **Plastic** to stick to surface.



Doodle your name in a continuous unbroken Doodle by dragging the **Plastic** along the paper as if you were writing with a pencil, with all letters connected. Keep your movement slow and steady.



When you reach the end of your name, stop extruding by clicking the **FAST** button once again.



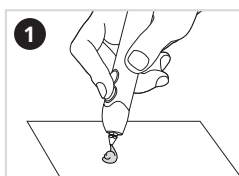
Bend the paper outwards to pop your Doodled name off.

**Your Name:**

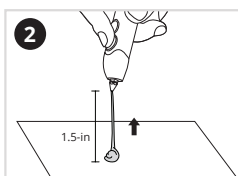
**#MyFirstDoodle**

## Step 4: Doodle in the air!

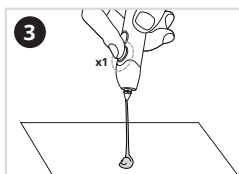
Please read all steps below before you begin this section, which will teach you how to Doodle vertically in the air.



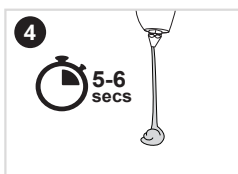
Extrude **Plastic** onto a piece of paper until you have a blob about the size of a ladybug. Make sure it is anchored into the paper.



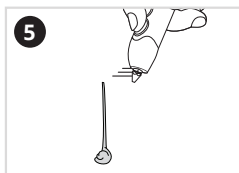
Lift **Pen** and **Plastic** up off the paper in a straight line for 1.5 in.



Click the **FAST** button to stop extruding, **BUT DO NOT MOVE PEN YET.**



Wait a few seconds with the **Pen** still connected to the top of your **Plastic** line.




Pull the **Pen** away. The line will remain vertical.

**Well done! You just Doodled in the air! This is a crucial stepping stone to making all kinds of wonderful three dimensional objects with your 3Doodler Create+.**

## Step 5: Doodle Even More!

🔦 For further guides, projects and inspiration, please refer to:



**YouTube videos: Cube**   
<https://www.youtube.com/3Doodler>



**YouTube videos: Squiggly**   
<https://www.youtube.com/3Doodler>



**Stencils provided at the back of this manual:**  
Eiffel tower - P.79-81

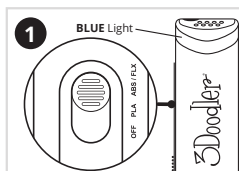


**Stencils provided at the back of this manual:**  
Glasses - P.82-83

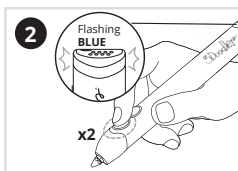
**MORE** **Community projects for further inspiration and guidance:**  
<http://the3Doodler.com/community>

Now that you've Doodled with ABS Plastic, we want to show you everything you need to know about changing Plastic and introduce you to the different types of Plastic.

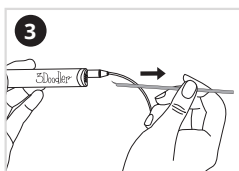
## Step 6: Reverse and Remove Plastic



With **Pen** set to **ABS / FLX**, wait for **BLUE Light** to come on.



Double click either **Speed Button**. **Light** will start flashing to signal **Plastic** reversing.



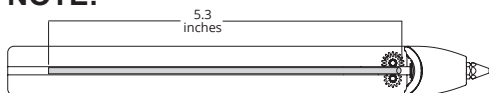
Once **Plastic** stops reversing, it is safe to remove it from the **Pen** by gently pulling on the back of the strand.

### TIP SNIP THOSE ENDS!

After removing a **Plastic** strand from the **3Doodler Create+**, cut and remove any partially melted material at the end of your strand before re-feeding it into the **3Doodler Create+**. This will reduce blockages and clogging issues.



### NOTE:



**Plastic** that is shorter than **5.3 inches** cannot be reversed. You should feed it all the way through your **3Doodler Create+** and use it up. (Alternatively, you can push **Plastic** out the back - see Section 3, Step 3B.)

### TIP PLASTIC TYPES AND SETTINGS.

Before we continue, it's time you learned about the different types of **Plastic** you can use with the **3Doodler Create+** (and which settings to use for each type).

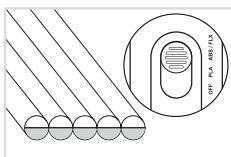
#### ABS (MATTE):

**Temp:** ABS / FLX Temp

**Light:** BLUE

**Feature:** Great for drawing in the air.

**How to tell:** Plastic has white semi-circle ends.



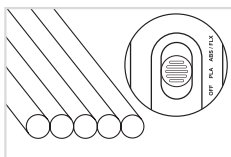
#### PLA (GLOSSY / CLEAR / METALLIC / SPARKLE):

**Temp:** PLA Temp

**Light:** GREEN

**Feature:** Glossy and making it perfect for artistic creations.

**How to tell:** Very rigid, no white semi-circle ends.



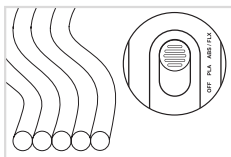
#### FLEXY:

**Temp:** ABS / FLX Temp

**Light:** BLUE

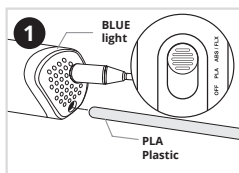
**Feature:** Make flexible, bendable Doodles.

**How to tell:** Plastic is very flexible.

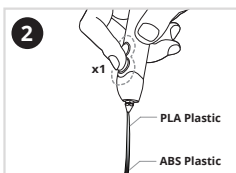


## Step 7: Let's Switch to PLA Plastic!

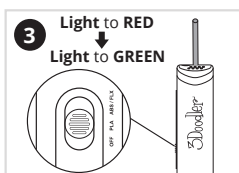
S  
T  
B  
W  
Y



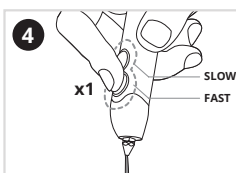
With **Pen** on **ABS / FLX**, load a new strand of **PLA Plastic** into **Plastic Loading Port**. Use a different color to the **ABS** you were using before.



The color of the **Plastic** will change once the **PLA** starts extruding. It will appear mixed at first. **STOP** extrusion by pushing either button once.

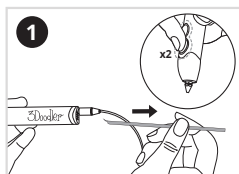


Switch **Pen** to **PLA** setting. Wait for **Light** to turn **GREEN**.

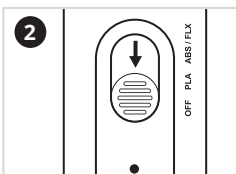


Click **FAST** or **SLOW** once to continue extruding the **PLA Plastic** and Doodle as you wish.

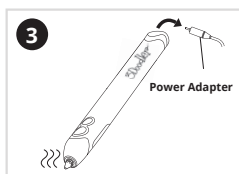
## Step 8: Power Down



Remove all **Plastic** from the **Pen** using the **Reverse** feature (double click any **Speed Button**). Friendly reminder to snip those ends!



Move the **Control Switch** to **OFF**.



Allow your **3Doodler Create+** to cool completely before storing.

### NOTE:

After 5 minutes of inactivity, the **3Doodler Create+**'s heating system will automatically power down. You will need to press one of the **Speed Buttons** OR toggle the **Control Switch OFF** and then **ON** again to continue use.

### TAKE A BREAK:

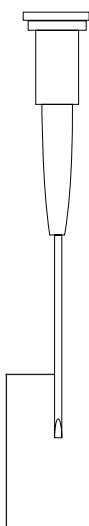
We recommend powering down and giving your **3Doodler Create+** a 30 minutes break after every 2 hours of continuous use.

W  
a  
3  
t

## c! SECTION 3: TROUBLESHOOTING

### Tools (Provided in Box)

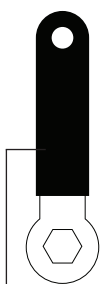
Before showing you how to troubleshoot issues with your 3Doodler Create+, we want to introduce you to three handy tools provided in your box:



#### Mini Screwdriver

Keep this handy for removing the **Maintenance Cover**.

Keep this handy for removing the **Maintenance Cover** or rotating the **Temperature Adjuster** (See [the3doodler.com/temperature](http://the3doodler.com/temperature))



#### Mini Spanner

Used for tightening and removing the **Nozzle**.

**Do not remove Nozzle when Pen is cold.**

**Do not overtighten the Nozzle, as you may break it.**



#### Unblocking Tool

Used for pushing short pieces of **Plastic** down into the **Drive Gear** to help with extrusion from **Pen**.

With those introductions over, it's time to look at the different issues that may arise with your 3Doodler Create+ and steps to get back to Doodling.

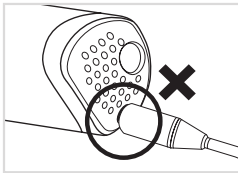
# 1. My Pen won't turn on! (Light doesn't turn on)

Let's double check the following:

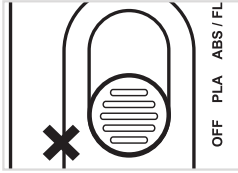
**A.** Is the **Power Adapter** plugged into a working power outlet?

## NOTE:

If you have a spare power adapter around the house please use it to test your **3Doodler Create+**. This will help determine if the problem is with your **3Doodler Create+** or with the **Power Adapter** provided in the box.



**B.** Is the end of the **Power Adapter** connected to the correct part of the **Pen**?

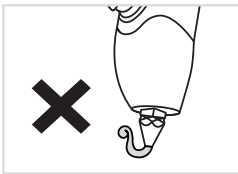


**C.** Make sure the **Control Switch** on your **3Doodler Create+** is not set to **OFF**.

# 2. My Plastic is extruding but it won't stick to the paper, or is curling up around the Nozzle.

**Stop extruding and start again using the following instructions:**

When the **Plastic** resumes extruding, push the **Nozzle** firmly down into the paper, allowing **Plastic** to stick to the surface.



Drag the **Plastic** along the paper or surface in a continuous unbroken line as if you were writing with a pencil.

Keep your movement slow and steady. The **Plastic** should hold to the paper and not curl up around the **Nozzle**.

# 3. My Plastic is not extruding from my 3Doodler Create+.

**3A. Plastic not engaging properly with the Drive Gear:**

Gently push until you feel the strand pulled through the **Drive Gear** on its own.

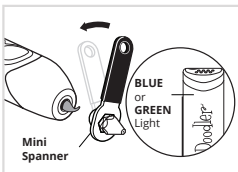
If the above does not work, reverse the **Plastic** fully from the **Pen**. (See Section 2, Step 6) Snip ends, then reinsert and try again.

If **Plastic** is too short to be removed from the **Pen**, move to 3B.

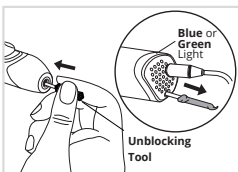
**3B. Plastic is too short to be removed from the Pen:**

Try unscrewing the **Nozzle** and using the **Unblocking Tool**.

While **Pen** is hot (**BLUE** or **GREEN** Light on), use **Mini Spanner** to unscrew and remove **Nozzle** anti-clockwise.



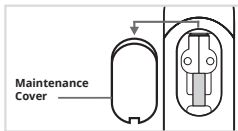
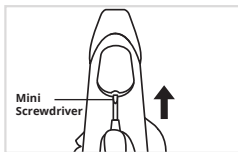
While using the **Reverse** feature of the **3Doodler Create+**, insert **Unblocking Tool** through open front end of **Pen** and gently push any excess **Plastic** out through the back of the **Pen**.



### 3C. Plastic may be wrapped around the Drive Gear.

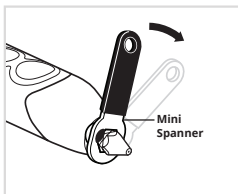
Remove **Maintenance Cover** using **Mini Screwdriver** provided in the box.

Use the **Mini Screwdriver** or **Unblocking Tool** to lift and release **Plastic** from the **Drive Gear** and out of the **Pen** through the open area beneath the **Maintenance Cover** or from the **Plastic Loading Port**.



### 4. My Plastic is leaking from around the Nozzle.

**Nozzle** may loosen with continued usage (or in transit). While **Pen** is hot (**BLUE** or **GREEN** Light on), gently turn **Nozzle** clockwise to tighten it using the **Mini Spanner** provided. Stop tightening once you first feel resistance so as to avoid over-tightening the **Nozzle** and breaking it.



### 5. My Plastic won't stop extruding.

- A. Click either the **FAST** or **SLOW** button once.
- B. If Step A does not solve this problem, please unplug your **3Doodler Create+** and then plug it in and try again.

### 6. How do I reverse my unused Plastic?

While the **Pen** is on and hot (**BLUE** or **GREEN** Light), **double click** either the **FAST** or **SLOW** button. **Light** will start flashing to signal the **Plastic** is reversing. Once the **Plastic** stops reversing, it is safe to remove it from the **Pen** by gently pulling on the back of the strand.

If **Plastic** is too short to reverse, see Section 3, Step 3B.

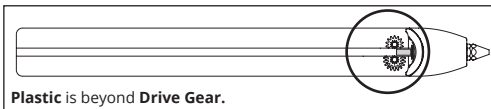
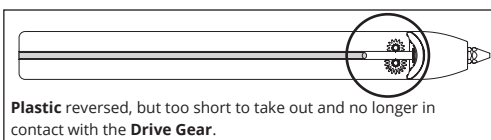


Snip the ends of your **Plastic** now for easier loading and Doodling later.

### 7. I have reversed my Plastic but cannot get it out.

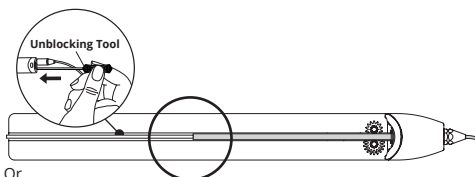
It is possible that the **Plastic** is either too short to reverse all the way out of your **3Doodler Create+**, or that the **Plastic** has moved past the **Pen's Drive Gear** system.

You will be able to check for these issues by looking through the **Maintenance Cover**.



For both of these issues, you can try the following options:

- Insert a new strand of **Plastic** or **Unblocking Tool** to push the remaining **Plastic** through while **Pen** is **ON** and extruding.



Or

- While using the **Reverse** feature of the **3Doodler Create+**, remove **Nozzle** and use **Unblocking Tool** to push **Plastic** out the back of the **Pen**. (See Section 3, Step 3B).

## 8. My Pen won't heat up! (light stays red).

It takes around 60-90 seconds for your **Pen** to heat up. If, after that time, the **Pen** still does not heat up and the **Light** remains **RED**, turn the **Pen ON** and **OFF** and try again. If that still does not work, please contact us at [help@the3Doodler.com](mailto:help@the3Doodler.com) and we will assist further.

## SECTION 4: TIPS AND BEST PRACTICES

### Pay attention to Plastic types and settings

- For optimal Doodling, we suggest using the correct temperature settings for your **Plastic**.
- DO double check which type of **Plastic** you are using before you turn on the **3Doodler Create+** and insert a **Plastic** strand. If your **Plastic** strands get mixed up, here is a handy table for sorting and identifying what you're working with.

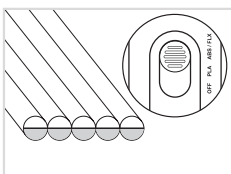
#### **ABS (MATTE):**

**Temp:** ABS / FLX Temp

**Light:** BLUE

**Feature:** Great for drawing in the air.

**How to tell:** Plastic has white semi-circle ends.



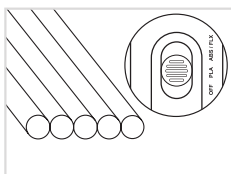
#### **PLA (GLOSSY / CLEAR / METALLIC / SPARKLE):**

**Temp:** PLA Temp

**Light:** GREEN

**Feature:** Glossy and making it perfect for artistic creations.

**How to tell:** Very rigid, no white semi-circle ends.



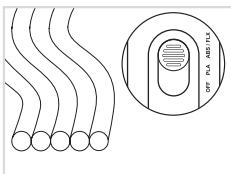
#### **FLEXY:**

**Temp:** ABS / FLX Temp

**Light:** BLUE

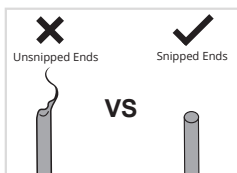
**Feature:** Make flexible, bendable Doodles.

**How to tell:** Plastic is very flexible.



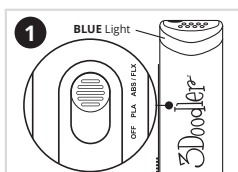
### Do not forget to snip your Plastic ends

- After removing a **Plastic** strand from the **3Doodler Create+**, cut and remove any partially melted material at the end of your strand before re-feeding it into the **3Doodler Create+**. This will reduce blockages or clogging issues.

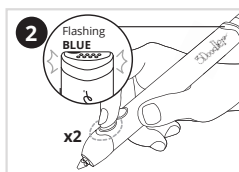


### Reverse and remove Plastic correctly

- DO NOT pull **Plastic** from the back of the **3Doodler Create+** other than as directed.



With the **Pen** set to **ABS / FLX**, wait for the **BLUE Light** to come on.



Double click either **Speed Button** and the **Light** will start flashing to signal the **Plastic** is reversing.



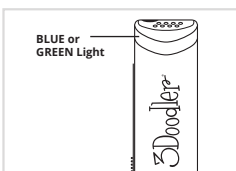
Once the **Plastic** stops reversing, it is safe to remove it from the **Pen** by gently pulling on the back of the strand.

## Take a break

- DO give your **3Doodler Create+** a rest after every 2 hours of continuous Doodling. 30 minutes of down time should be plenty.

## Treat your Nozzle right

- If you ever remove your **Nozzle**, DO NOT remove it when your **3Doodler Create+** is cold. **Light** should be **BLUE** or **GREEN**.
- If you ever need to tighten your **Nozzle**, DO NOT force the **Nozzle** or overtighten it, as you could break the **Nozzle** and permanently damage your **3Doodler Create+**.



Specifications are subject to change and improvement without notice.

### SPECIFICATION OF POWER ADAPTER

Input: 100-240V AC, 0.5A MAX, 50-60Hz  
Output: +5V DC, 1.2A

### CARE & MAINTENANCE

For care and maintenance information, and more advice on how to use your 3Doodler Create+, please refer to our website: [the3Doodler.com](http://the3Doodler.com)  
To troubleshoot, please visit: [the3Doodler.com/troubleshooting](http://the3Doodler.com/troubleshooting)



### LIMITED WARRANTY

For more details on your limited warranty, please visit:  
[the3Doodler.com/warranty](http://the3Doodler.com/warranty)

For 3Doodler's Terms and Conditions and other notices please refer to our website: [the3Doodler.com/terms-and-conditions](http://the3Doodler.com/terms-and-conditions)



This marking indicates that this product should not be disposed of with other household wastes. To prevent possible harm to the environment or human health from uncontrolled waste disposal, recycle it responsibly to promote the sustainable reuse of material resources.

**This device complies with Part 15 of the FCC Rules. Operation is subject to the following two conditions: (1) this device may not cause harmful interference, and (2) this device must accept any interference received, including interference that may cause undesired operation.**

**Warning: Changes or modifications to this unit not expressly approved by the party responsible for compliance could void the user's authority to operate the equipment.**

**NOTE:** This equipment has been tested and found to comply with the limits for a Class B digital device, pursuant to Part 15 of the FCC Rules. These limits are designed to provide reasonable protection against harmful interference in a residential installation. This equipment generates, uses and can radiate radio frequency energy and, if not installed and used in accordance with the instructions, may cause harmful interference to radio communications. However, there is no guarantee that interference will not occur in a particular installation. If this equipment does cause harmful interference to radio or television reception, which can be determined by turning the equipment off and on, the user is encouraged to try to correct the interference by one or more of the following measures:

- Reorient or relocate the receiving antenna.
- Increase the separation between the equipment and receiver.
- Connect the equipment into an outlet on a circuit different from that to which the receiver is connected.
- Consult the dealer or an experienced radio/ TV technician for help.

CAN ICES-3 (B)/NMB-3(B)

This product is protected by WobbleWorks' intellectual property. Please see the list of Wobbleworks' patents at / Ce produit est protégé par la propriété intellectuelle de WobbleWorks. S'il vous plaît voir la liste des brevets de Wobbleworks à / Este producto está protegido por propiedad intelectual y pertenece a WobbleWorks. Consulte la lista de patentes de WobbleWorks en / Dieses Produkt ist durch WobbleWorks' geistiges Eigentum geschützt. Sie finden die Liste von Wobbleworks' Patenten unter / Dit product valt onder de bescherming van het intellectueel eigendomsrecht van WobbleWorks. Raadpleeg de lijst met Wobbleworks' octrooien op / 本产品受 WobbleWorks知识产权保护。请参阅Wobbleworks的专利列表 / Questo prodotto è protetto dalla proprietà intellettuale di WobbleWorks. Si prega di consultare l'elenco dei brevetti di Wobbleworks all'indirizzo : <http://the3Doodler.com/patents>.

**3Doodler Create+:** Australia 2013101514; China ZL201310535754.2, ZL201320686485.5, ZL201430565974.5; Germany 202013010264.0, 202013011820.2; European Community 002607234-0001; Hong Kong 1185219, 1402448.7M001, 1402448.7M002, 1402448.7M003, 1402448.7M004; Japan 1534061; Korea 30-0821455; Mexico 3553; Taiwan M502562, D172860; United States of America D749173, D789453; and other patents pending.

Manufactured by / Fabriqué par / Fabricado por / Hergestellt von /  
Fabbricato da / Gemaakt door WobbleWorks (HK) Limited.  
Distributed by / Distribué par / Distribuido por / Vertrieben von /  
Distribuito da / Gedistribueerd door WobbleWorks, Inc. /  
WobbleWorks (HK) Limited, 89 5th Avenue, Suite 802, NY, NY, 10003.

© WobbleWorks, Inc. 2018