

# AEROSWIFT™ Vacuum

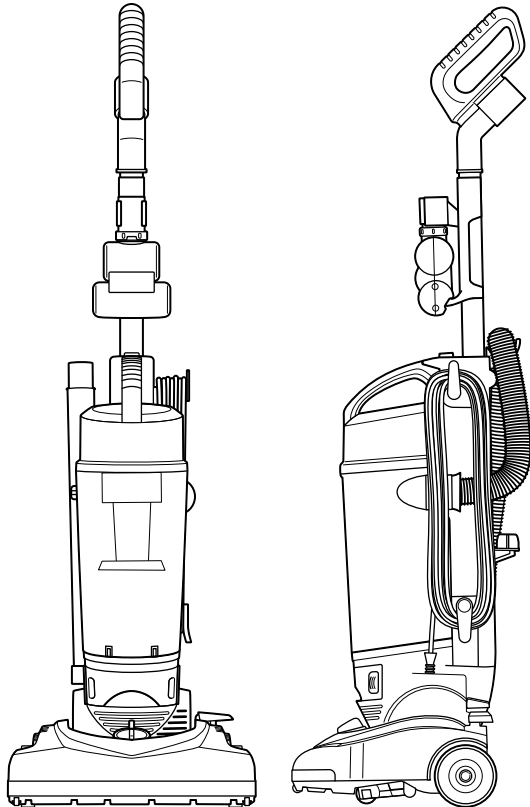
---

USER GUIDE  
1009 SERIES



More of a video person? Look for this icon and go online for an instructional how-to video at

[www.BISSELL.com](http://www.BISSELL.com)



# IMPORTANT SAFETY INSTRUCTIONS

## READ ALL INSTRUCTIONS BEFORE USING YOUR VACUUM.

Always connect to a polarized outlet (one slot is wider than the other). Unplug from outlet when not in use and before conducting maintenance. When using an electrical appliance, basic precautions should be observed, including the following:

### **WARNING**

#### **TO REDUCE THE RISK OF FIRE, ELECTRIC SHOCK, OR INJURY:**

- » Do not leave vacuum cleaner when it is plugged in. Unplug from outlet when not in use and before servicing.
- » Do not use outdoors or on wet surfaces.
- » Do not allow to be used as a toy. Close attention is necessary when used by or near children.
- » Do not use for any purpose other than described in this User's Guide. Use only manufacturer's recommended attachments.
- » Do not use with damaged cord or plug. If appliance is not working as it should, has been dropped, damaged, left outdoors, or dropped into water, have it repaired at an authorized service center.
- » Do not pull or carry by cord, use cord as a handle, close a door on cord, or pull cord around sharp edges or corners. Do not run appliance over cord. Keep cord away from heated surfaces.
- » Do not unplug by pulling on cord. To unplug, grasp the plug, not the cord.
- » Do not handle plug or vacuum cleaner with wet hands.
- » Do not put any object into openings. Do not use with any opening blocked; keep openings free of dust, lint, hair, and anything that may reduce air flow.
- » Keep hair, loose clothing, fingers, and all parts of body away from openings and moving parts.
- » Turn off all controls before plugging or unplugging vacuum cleaner.
- » Use extra care when cleaning on stairs.
- » Do not use to pick up flammable or combustible materials (lighter fluid, gasoline, kerosene, etc.) or use in areas where they may be present.
- » Do not use vacuum cleaner in an enclosed space filled with vapors given off by oil base paint, paint thinner, some moth proofing substances, flammable dust, or other explosive or toxic vapors.
- » Do not use to pick up toxic material (chlorine bleach, ammonia, drain cleaner, etc.).
- » Do not pick up anything that is burning or smoking, such as cigarettes, matches, or hot ashes.
- » Do not use without filters in place.
- » Do not pick up hard or sharp objects such as glass, nails, screws, coins, etc.
- » Use only on dry, indoor surfaces.
- » Keep appliance on a level surface.
- » Do not carry the vacuum cleaner while it is running.
- » Unplug before connecting or disconnecting the TurboBrush™ Tool.

## **THIS APPLIANCE HAS A POLARIZED PLUG**

To reduce the risk of electric shock, this appliance has a polarized plug (one blade is wider than the other). This plug will fit in a polarized outlet only one way. If the plug does not fit fully in the outlet, reverse the plug. If it still does not fit, contact a qualified electrician to install a proper outlet. Do not change the plug in any way.

## **SAVE THESE INSTRUCTIONS FOR FUTURE USE**

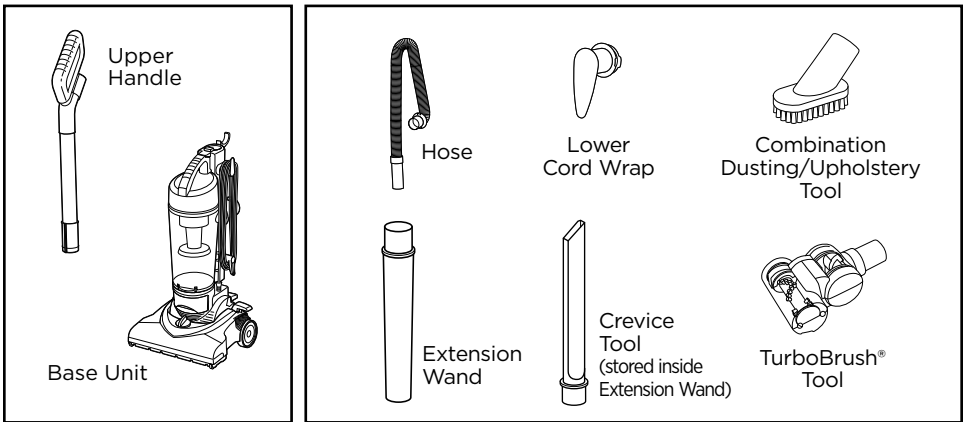
This model is for household use only.

## Thanks for buying a BISSELL vacuum!

We love to clean and we're excited to share one of our innovative products with you. We want to make sure your vacuum works as well in two years as it does today, so this guide has tips on using (pages 6-7), maintaining (pages 7-9), and if there is a problem, troubleshooting (page 10).

In just a few simple assembly steps, you'll be ready to vacuum. Flip to page 5 and let's get started!

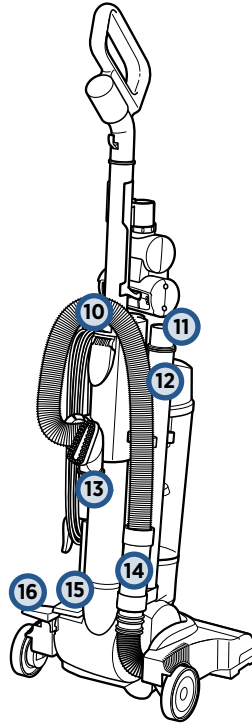
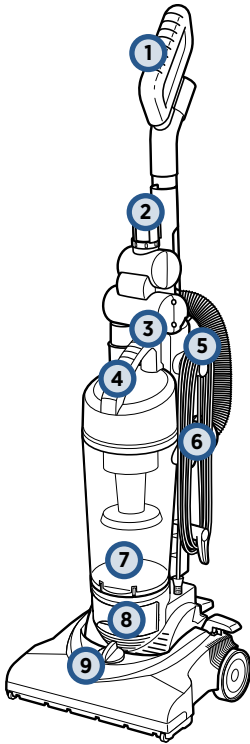
## What's In The Box?



**NOTE:** Standard accessories may vary by model. To identify what should be included with your purchase, please refer to the "Carton Contents" list located on the carton top flap.

Safety Instructions . . . . .	2	Troubleshooting . . . . .	10
Product View . . . . .	4	Warranty . . . . .	11
Assembly . . . . .	5	Service . . . . .	11
Operations . . . . .	6	Contact Information . . . . .	11
Maintenance & Care . . . . .	7-9	Product Registration . . . . .	12

# Product View

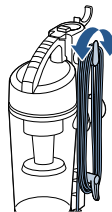


- 1 Quick Release Handle
- 2 TurboBrush® Tool (select models)
- 3 Tank Release Button
- 4 Carry Handle
- 5 Quick Release Handle Lever
- 6 Power Cord
- 7 Bottom Empty Dirt Bin
- 8 Filter Tray
- 9 Height Adjustment Knob

- 10 Stretch Hose
- 11 Crevice Tool (stored inside Extension Wand)
- 12 Extension Wand
- 13 Combination Dusting/  
Upholstery Tool (select models)
- 14 Hose Wand Base
- 15 Power Foot Pedal
- 16 Handle Release Lever

## Cord Release and Storage

Twist Cord Release  
down to quickly  
remove cord



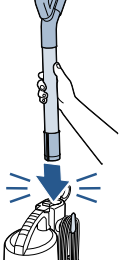
# Assembly



## ⚠️ WARNING

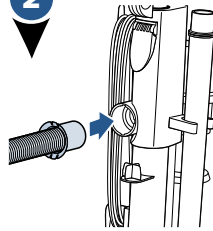
Do not plug in your vacuum until you are familiar with all instructions and operating procedures.

1



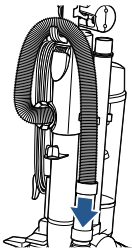
With the Quick Release Lever in upright position - slide handle into base and push the lever down to lock handle into place.

2



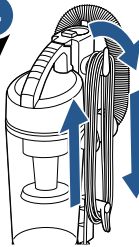
Insert the end of the hose into the hose connector at the foot base inlet opening.

3



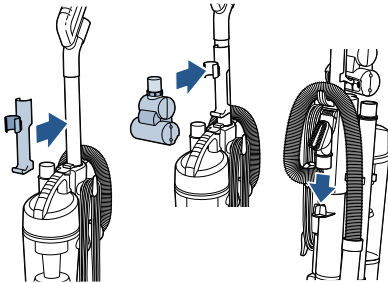
Wrap the hose around the upper hose clip.

4



Wrap power cord around the cord wraps.

5



Snap the TurboBrush® Tool Clip to the handle.

Line up the back of the TurboBrush® to the bottom of the clip. With the lower tool in position, push the top of the handle into the upper clip to secure.

Store Combination Dusting/Upholstery Tool on the storage post located on the back of the unit.

## ⚠️ NOTICE

Brushroll continues to turn while product is turned on and handle is in upright position. To avoid damage to carpet, rugs, furniture and flooring, avoid tipping vacuum or setting it on furniture, fringed area rugs, or carpeted stairs during tool use.

## ⚠️ NOTICE

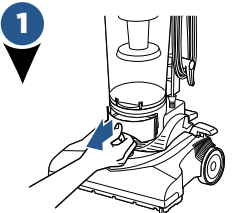
With brushroll on, do not allow cleaner to sit in one location for an extended period of time, as damage to floor can result.

# Install Febreze® Filter\*

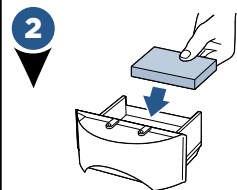
\*Included separately

## ⚠️ WARNING

Before using your vacuum, make sure that the dirt container is in locked position and that the filter is in place. DO NOT operate your vacuum without the filter.



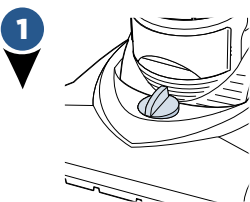
Slide out the filter tray located underneath the dirt bin.



Replace standard yellow foam filter with Febreze® black foam filter to freshen as you vacuum.

**NOTE:** Your vacuum comes with a standard foam filter (yellow) located in the lower filter tray of the dirt tank. A separate Febreze® foam filter (black) may also be packed in the box. Both are washable. Over time, the Febreze® filter will begin to lose scent after use and washing.

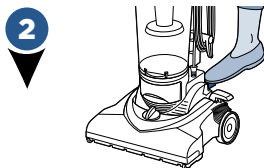
## Power On & Settings



Turn the dial on the foot of the vacuum to desired setting. If dial is difficult to turn, tilt vacuum back.

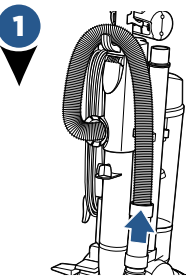
**Bare Floor Setting -**  
For bare floors or low pile carpet.

**High Carpet Setting -**  
For high pile and most shag carpet.

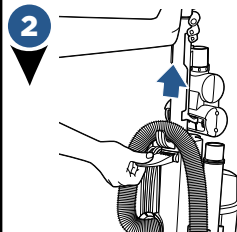


Press down once on the red ON/OFF pedal located on the lower back of the vacuum to turn ON. Press down again to turn OFF.

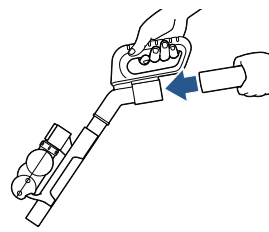
## Above Floor Cleaning



Pull hose up and out of vacuum base to attach your desired tool.



For extended reach, lift the Quick Release Lever on the back of the vacuum to slide the Quick Release Handle out of the base.



Remove the hose from the hose wand base and connect to the open inlet at the handle. Connect desired tool to the end of the wand.

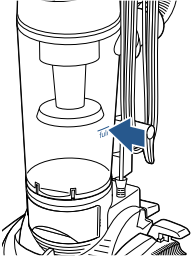
Febreze® and related trademarks are owned by the Procter & Gamble Company, Cincinnati, Ohio and used under license by BISSELL Homecare, Inc.

# Maintenance: Empty Dirt Tank

## ⚠️ WARNING

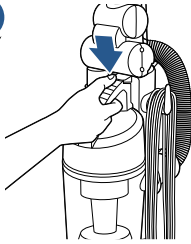
To reduce the risk of electrical shock, turn power switch off and disconnect polarized plug from electrical outlet before performing maintenance or troubleshooting checks.

1



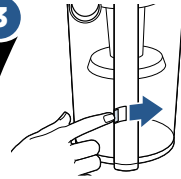
Empty once tank is full.

2



Press the release button at the top of the dirt tank to remove it from the vacuum.

3

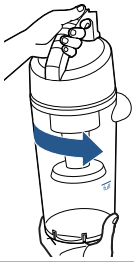


Hold dirt tank over a trash container and push the empty release button located on the lower backside of the dirt bin. Close lid and return tank to vacuum base.

# Maintenance: Clean Tank & Cyclone

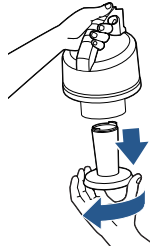


1



Remove the dirt tank and twist its top counter-clockwise to unlock and pull up to separate.

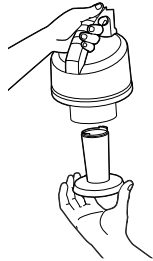
2



Grab the bottom of the Cyclone assembly and pull down from the upper tank to remove. Clean with warm water and mild detergent. Wipe inside of tank with a damp cloth.

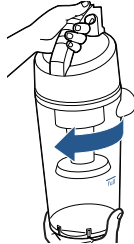
Do not reassemble until completely dry.

3



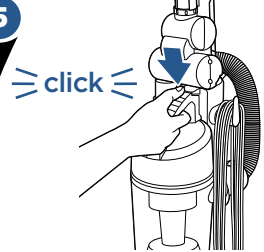
Align tabs on Cyclone assembly with tank to replace.

4



Place the top back on the dirt container by aligning the tab, then twist clockwise to lock.

5



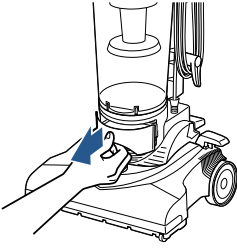
Return the fully assembled tank to the vacuum base and press firmly until you hear a "click".

**NOTE:** Let parts dry completely before returning them to vacuum for use.

# Maintenance: Filter

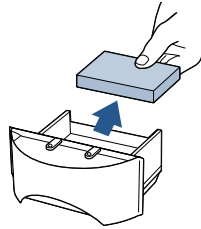


1



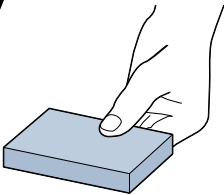
Slide out the filter tray located underneath the dirt bin.

2



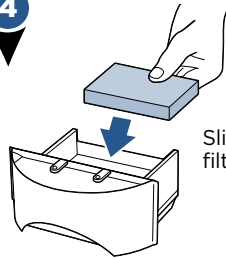
Remove foam filter. Hand wash in warm water; mild detergent may be used if desired. Rinse well and air dry thoroughly. Replace filter if necessary.

3



Make sure the filter is completely dry before placing it back into the tank top.

4



Slide in the filter tray.

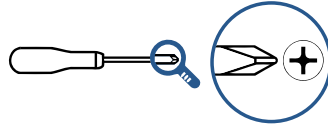
## WARNING

Do not operate vacuum with damp or wet filters, as well as without filters or the Dirt Container in place. Allow components to dry before reassembling the Dirt Container.

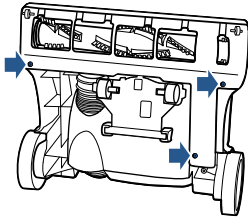
# Maintenance: Check Brush & Belt



In Step 1 and 5, you will need a Phillips screwdriver.

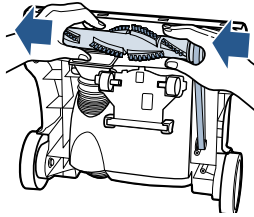


1



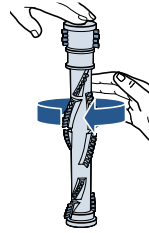
Unplug vacuum, turn over and unscrew 3 Phillips head screws and remove bottom cover.

2



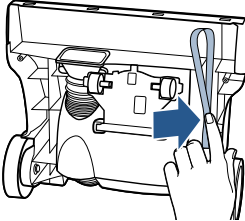
Grasp the rotating brush at both ends and lift out.

3

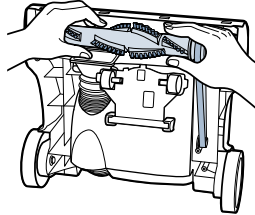


Inspect brush roll by placing it on its end and spin. The brush roll should spin freely, multiple times by one flick. If it doesn't, replace brush roll. Inspect belt, replace if it appears damaged.

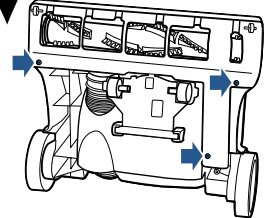
4



Place belt back on motor gear. Pull belt over the brush roll and place back in. Position the brush roll end opposite of the belt to line up with tab. The end closest to the belt will slide in the tab without needing any rotation.



5



Re-attach bottom replacing the 3 screws. Spin the brush by hand one revolution to self-center the belt.

# Troubleshooting

## WARNING

To reduce the risk of electric shock, turn power switch off and disconnect plug from electrical outlet before performing maintenance or troubleshooting checks.

Problem	Possible causes	Remedies
<b>Brush Roll doesn't rotate</b>	Belt is broken or stretched	Follow maintenance instructions on checking brush and belt (page 9)
	Brush Roll has lodged debris or other entanglements, keeping the brush from rotating	Check the Brush Roll and remove debris, also check the belt for any breaks or tears and replace if necessary
<b>Vacuum won't pick up dirt</b>	Filter is dirty	Remove and rinse filter, allowing enough time for it to dry properly before reinserting
	The Main Hose is not connected	Locate the Main Hose and reconnect by pushing the hose connection to secure the latch
	There is a crack or hole in the Main Hose	If there is a crack or hole, order a new Main Hose from the BISSELL website
	The Brush Roll bristles are worn	Replace the Brush Roll
	There is a clog in the vacuum	Remove debris and any other entanglements that may be restricting its rotation
	The Dirt Container is not seated correctly	Press the Empty Button to release the Dirt Container and reseal properly
<b>Dirt is escaping from the vacuum</b>	The Dirt Container is full	Empty the Dirt Container
	Filter is missing	Check to see if the filter is in place
	The Dirt Container is not seated properly	Press the Empty Button and remove the Dirt Container, then return it inserting the bottom first and pivoting the Dirt Container towards the vacuum (listen for a "click" sound indicating that it snapped into place)
<b>Vacuum is hard to push</b>	Height adjustment knob is on too low of a setting	Place knob on highest setting and determine if there is any difference

## Parts & Supplies

For Parts and Supplies, go to [www.BISSELL.com](http://www.BISSELL.com) and enter your model number in the search field.

# Warranty

This warranty gives you specific legal rights, and you may also have other rights which may vary from state to state. If you need additional instruction regarding this warranty or have questions regarding what it may cover, please contact BISSELL Consumer Care by e-mail or telephone as described below.

## Limited Two-Year Warranty

Subject to the \*EXCEPTIONS AND EXCLUSIONS identified below, upon receipt of the product BISSELL will repair or replace (with new or remanufactured components or products), at BISSELL's option, free of charge from the date of purchase by the original purchaser, for two years any defective or malfunctioning part.

See information below on "If your BISSELL product should require service".

This warranty applies to product used for personal, and not commercial or rental, service. This warranty does not apply to fans or routine maintenance components such as filters, belts, or brushes. Damage or malfunction caused by negligence, abuse, neglect, unauthorized repair, or any other use not in accordance with the User's Guide is not covered.

BISSELL IS NOT LIABLE FOR INCIDENTAL OR CONSEQUENTIAL DAMAGES OF ANY NATURE ASSOCIATED WITH THE USE OF THIS PRODUCT. BISSELL'S LIABILITY WILL NOT EXCEED THE PURCHASE PRICE OF THE PRODUCT.

**Some states do not allow the exclusion or limitation of incidental or consequential damages, so the above limitation or exclusion may not apply to you.**

## \*EXCEPTIONS AND EXCLUSIONS FROM THE TERMS OF THE LIMITED WARRANTY

THIS WARRANTY IS EXCLUSIVE AND IN LIEU OF ANY OTHER WARRANTIES EITHER ORAL OR WRITTEN. ANY IMPLIED WARRANTIES WHICH MAY ARISE BY OPERATION OF LAW, INCLUDING THE IMPLIED WARRANTIES OF MERCHANTABILITY AND FITNESS FOR A PARTICULAR PURPOSE, ARE LIMITED TO THE TWO YEAR DURATION FROM THE DATE OF PURCHASE AS DESCRIBED ABOVE.

Some states do not allow limitations on how long an implied warranty lasts so the above limitation may not apply to you.

**NOTE:** Please keep your original sales receipt. It provides proof of date of purchase in the event of a warranty claim.

# Service

## If your BISSELL product should require service:

Contact BISSELL Consumer Care to locate a BISSELL Authorized Service Center in your area.

If you need information about repairs or replacement parts, or if you have questions about your warranty, contact BISSELL Consumer Care.

### Website:

[www.BISSELL.com](http://www.BISSELL.com)

### E-mail:

[www.BISSELL.com/email-us](mailto:www.BISSELL.com/email-us)

### Call:

BISSELL Consumer Care  
1-800-237-7691  
Monday - Friday 8am - 10pm ET  
Saturday 9am - 8pm ET  
Sunday 10am - 7pm ET

## Please do not return this product to the store.

Other maintenance or service not included in the manual should be performed by an authorized service representative.

For any questions or concerns, BISSELL is happy to be of service. Contact us directly at 1-800-237-7691.

# Register your product today!

Registering is quick, easy and offers you benefits over the lifetime of your product.

## You'll receive:

### **BISSELL Rewards Points**

Automatically earn points for discounts and free shipping on future purchases.

### **Faster Service**

Supplying your information now saves you time should you need to contact us with questions regarding your product.

### **Product Support Reminders and Alerts**

We'll contact you with any important product maintenance reminders and alerts.

### **Special Promotions**

Optional: Register your email to receive notice of offers, contests, cleaning tips and more!

**Visit [www.BISSELL.com/registration!](http://www.BISSELL.com/registration!)**

## Visit the BISSELL website: [www.BISSELL.com](http://www.BISSELL.com)

When contacting BISSELL, have model number of cleaner available.

Please record your Model Number: \_\_\_\_\_

Please record your Purchase Date: \_\_\_\_\_

**NOTE: Please keep your original sales receipt. It provides proof of purchase date in the event of a warranty claim. See Warranty on page 11 for details.**

**For cleaning tips and more visit [www.BISSELL.com](http://www.BISSELL.com) or find us at:**



BISSELL



BISSELLClean



BISSELLClean



BISSELL



BISSELL

*We can't wait to hear from you!*

Rate this product and let us (and millions of your closest friends) know what you think!

**[www.BISSELL.com](http://www.BISSELL.com)**



©2016 BISSELL Homecare, Inc.  
Grand Rapids, Michigan  
All rights reserved. Printed in China  
Part Number 161-0162 08/16  
Visit our website at: [www.BISSELL.com](http://www.BISSELL.com)