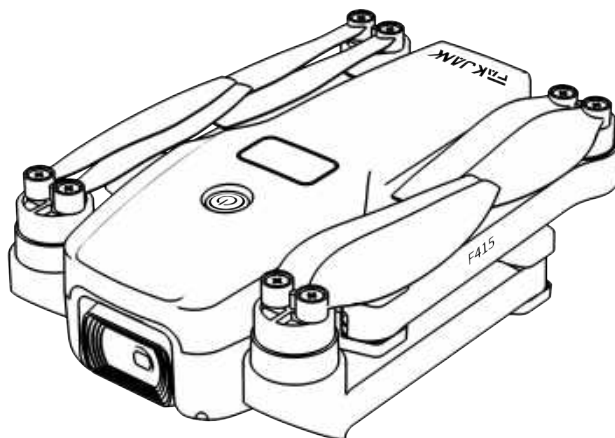


# Instruction Manual



## Manual catalog

User Manual in English	-----	1-7
Deutsche Bedienungsanleitung	-----	8-14
Manuel d'utilisation en français	-----	15-21
Manuale d'uso italiano	-----	22-28
Manual de usuario en español	-----	29-35

After sales team E-mail address: [fakjank@gmail.com](mailto:fakjank@gmail.com)

Please read the instructions carefully before  
using the product.



14+Ages

# DISCLAIMER

## Preface

Thank you for purchasing the FAKJANK series drone. Please read this manual carefully before operating it, and please keep this manual properly for future adjustment and maintenance.

Any questions we would like to hear from you! Please include your order number when you contact us at email (Customer service email address: fakjank@gmail.com, 24 Hr/7 Day).

## Important Statement

1. This product is not a toy, it integrates expertise in mechanics, electronics, aerodynamics, high-frequency launching, etc.
2. This drone integrates precise equipment, which requires proper assembly and commissioning to avoid accidents. The drone holder must operate the drone in a safe way, improper handling will cause serious personal injury or property damage. It may also be lost due to incorrect operation.
3. This product is suitable for people who have experience in operating drones and are over 14 years old.
4. If there is a problem during use, operation or maintenance, please contact your local sales agent or retailer, or keep in touch with the person in charge of our company.
5. Please use only original parts and accessories.
6. Please keep the packaging and this user manual for future reference.

# SAFETY PRECAUTIONS

The drone is a high-risk good, it must be away from the crowd when flying. Artificial assembly or damage, electronic control, or improper operation which not allowed, all of them are likely to cause damage to the aircraft, personal injury, or other unpredictable accidents. Pilots must be careful and need to understand the responsibility for accidents due to their own negligence.

### (1) Away from obstacles and crowds

The flying drone has an uncertain flight speed and state, there is a potential risk. Fly away from the crowds, high-rise buildings, high-voltage wires, etc., meanwhile, avoiding flying in windy, rainy, thunderstorms, and other bad weather to ensure the safety of pilots, the surrounding population, and the property.

### (2) Away from the damp environment

The interior of the drone is made up of many sophisticated electronic components and mechanical parts, so it is necessary to prevent the aircraft from being damp or water infiltration to avoid accidents of mechanical and electronic parts.

### (3) Safe operation

Please operate the drone according to your own status and flight skill. Fatigue, poor spirit, or improper operation will increase the risk of an accident.

### (4) Keep away from high-speed rotating parts

When the propellers are in high-speed spinning, please keep the drone away from the pilot, the surrounding crowd, and objects to avoid danger and damage.

### (5) Keep away from heat

The drone is composed of metal, fiber, plastic, electronic components, and other materials, so you should keep it away from heat sources and avoid sun exposure and high temperature to avoid the deformation of the drone.

## Flight Environment



Fly in Open Areas



Maintain Line of Sight



Fly Below 197 feet (60m)

- Avoid flying over or near obstacles, crowds, high voltage power lines, trees, airports, or bodies of water.



- DO NOT fly near strong electromagnetic sources such as power lines and base stations as it may affect the onboard compass.



- DO NOT use the drone in adverse weather conditions such as rain, snow, fog, and strong wind.

# BATTERY CARE

## The battery is made of the lithium-polymer battery

Lithium batteries are different from the general battery, which consists of a thin layer of thin paper wrapped with its chemical endoplasm. Which reduces its weight, but makes it more vulnerable in the face of rough or inappropriate operations. The inappropriate operation of this battery will cause an explosion.

## Store Properly

1. If the device is not going to be used for an extended period of time, remove batteries to prevent potential damage: battery leakage.
2. Please do not leave batteries exposed to direct sunlight.
3. Do not immerse the batteries in water or allow them to get wet.
4. Please keep the battery out of reach of children or pets.

## Use carefully

- When charging the rechargeable battery, do not use it for children alone, it must be carried out under the supervision of an adult, and it must be kept away from flammable materials when charging.
- Please do not short circuit or squeeze the battery to avoid explosion.
- The power terminals should not be taken out of the model, and the terminals should not be short-circuited; do not short-circuit, disassemble, or throw the battery into fire; do not place the battery in a high-temperature, heated place (such as in a fire or near an electric heating device).
- The model can only use the recommended charger. Please regularly check whether the wires, plugs, shells and other parts of the charger are damaged. If any damage is found, stop using it until the repair is complete.
- The charger is not a toy; the charger should only be used indoors.
- The battery after flight needs to be charged and then stored. If it is not used for a long time, it is recommended to charge the battery at least once every 3 months to avoid over-discharge of the battery which would cause permanent damage to the battery.

## BATTERY CHARGING METHOD:

1. First, connect your USB cable to the drone battery, then connect it to your favorite charging source.
2. The red light is on when the battery is charging, and the green light is always on when the battery is fully charged. Battery charging time is approximately 120 minutes.

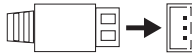
Drone's battery



USB charging cable



Adapter (sold separately)

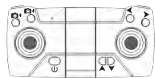


- Remove and put the battery in the correct way
- Non-rechargeable batteries cannot be charged
- The rechargeable battery can only be charged under the supervision of an adult
- Different types of batteries or old/new batteries cannot be mixed
- Only batteries of the same model or equivalent to the recommended model can be used
- The rechargeable battery should be removed from the drone before charging
- Batteries are inserted with correct polarity
- Depleted batteries should be removed from the drone
- The power terminals must not be short-circuited.

## PACKAGE LIST



DRONE



Remote Control



Battery x2



Propeller x4



Screwdriver

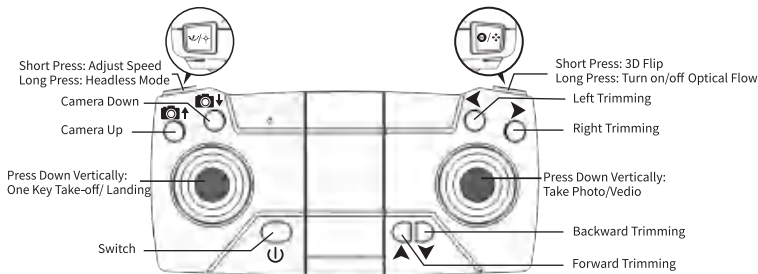


USB

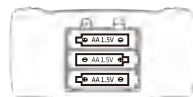


User Manual

## TRANSMITTER OVERVIEW



Open the battery cover and insert 3 AAA batteries as shown below (not included).



### CAUTION:

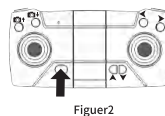
- The transmitter needs 3 AAA batteries to work
- Insert batteries in correct polarity (+) and (-)
- Don't mix old and new batteries
- Don't mix alkaline, standard (carbon-zinc) and rechargeable (nickel-cadmium) batteries
- Remove rechargeable batteries before charging
- Only charge batteries under adult supervision
- Remove spent batteries from the transmitter

## QUICK-START GUIDE

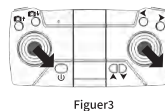
● Insert the drone battery. Turn on the drone switch (Figure 1) and place it on a flat surface; the drone light will flash.



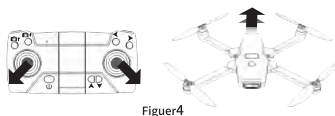
● Turn on the remote control switch (Figure 2), it will prompt a "Di", the red light of the remote control will be on, and the indicator of the aircraft will be on, then the frequency matching is completed.



● Push the throttle and joystick to the lower right corner at the same time, the buzzer will emit a "Di" sound, and the aircraft's lights will flash and then stay on, indicating that the leveling correction is completed. (Figure 3)



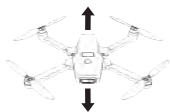
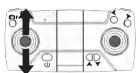
● Push the throttle and joystick outward at the same time (Figure 4) to take off the drone.



## FLIGHT CONTROLS

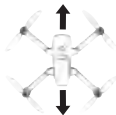
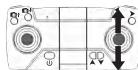
### HOVER UP AND DOWN

Push the **THROTTLE STICK** up to fly the drone up, and pull the **THROTTLE STICK** down to fly the drone down.



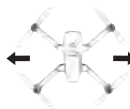
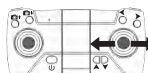
### FLY FORWARD OR BACKWARD

Push the **DIRECTION CONTROL STICK** up to fly the drone forward, and pull the **DIRECTION CONTROL STICK** down to fly the drone backward.



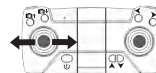
### FLY LEFT OR RIGHT

Move the **DIRECTION CONTROL STICK** to the left to fly the drone to the left, and move the **DIRECTION CONTROL STICK** to the right to fly the drone to the right.



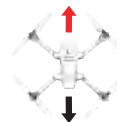
### ROTATE LEFT OR RIGHT

Move the **THROTTLE STICK** to the left to rotate the drone to the left, and move the **THROTTLE STICK** to the right to rotate the drone to the right.

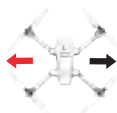


## TRIM ADJUSTMENTS

If the aircraft drifts backwards during flight, press the trim button with the forward symbol repeatedly until the aircraft stabilises to complete the adjustment. If the aircraft drifts forward during take-off, press the trim button with the backward symbol repeatedly until the aircraft stabilises to complete the adjustment.



If the aircraft drifts to the right during flight, press the adjustment button with the leftward symbol repeatedly until the aircraft stabilises to complete the adjustment. If the aircraft drifts to the left during take-off, press the adjustment button with the rightward symbol repeatedly until the aircraft stabilises to complete the adjustment.



## FUNCTIONS

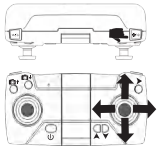
### ● 360°Flip

Long Press the 360°Flip button to flip the drone. The remote control will Di twice, indicating the drone is in Flip Mode.

Next, move the direction stick up or down, and the drone will flip up or down (Figuer. 5)  
Move the direction stick to the right or left, and the drone will flip left or right (Figuer. 6)

Note:

- Only execute rolls when you have plenty of airspaces. The drone can only perform flips when it is at least 7 feet in the air.
- This function can not be used when the drone is in a low power state.



Figuer5

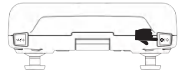


Figuer6

### ● Outdoor mode

When flying outdoors you can turn off optical flow positioning by long pressing the optical flow positioning button. A long press again will turn the optical flow positioning function back on. Turning it on makes the drone more stable when flying indoors.

Tip: This drone is equipped with optical flow positioning technology to give you more stability when flying indoors.



### ● Speed modes

The speed gear has three speeds.

When power on, the default is the slow gear. Short press the speed button on the remote control (as shown in Fig. 7) and then controller emits two sounds "Di" and "Di", which means the drone enter the medium gear. Short press the speed button on controller again and then controller emits the "Di", "Di" and "Di" sounds three times for entering the fast gear. And press this button briefly again, controller emits the "Di" sound for entering slow gear.

(It is recommended that beginners operate in the slow gear, and please use fast gear in windy day.)



Figuer7

### ● Headless mode

Headless mode allows you to fly the drone when you lost sight of the drone head direction, as it will be fixed in the flying direction even though the drone heads to other sides.

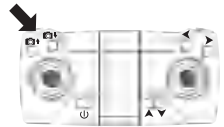
Definition of flying direction: the direction of the drone head facing when you unlock the drone will always be the forward direction.

Long Press the headless mode button before take-off to enter headless mode (fig. 9). The remote control will "Di" sound continuously and the drone's lights will start flashing, indicating that the drone is in headless mode. Long Press the remote control again to make the "Di" sound and exit headless mode.

(Note: the side with the camera is the front)



Figuer8



Figuer9

### ● Remote control to control camera recording

The camera can be adjusted up and down during flight. Press the lens up button on the remote control and the camera lens will adjust upwards, press the lens down button on the remote control and the camera lens will adjust downwards.



Notice:

This camera adjustment button needs to be pressed with a interval, if it is pressed continuously, it will affect the acceptance of the aircraft signal, the aircraft may get stuck, making it impossible to adjust the camera angle.

Short press on the right joystick vertically to take a photo, which will automatically be stored in the phone album. Long press on the right joystick vertically to start recording, then long press the joystick again to stop the recording and save the video to the phone album.



### ● One key take-off/land

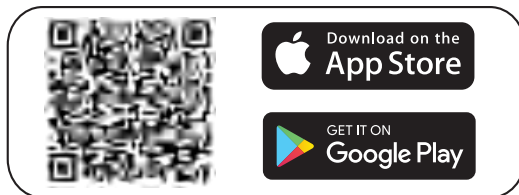
When the drone is calibrated and unlocked, short press on the left joystick vertically will take the drone off and the drone will automatically start and rise to a certain altitude.

Short press on the left joystick vertically again during flight will land the drone.



# 1. Download and installation instructions of APP software

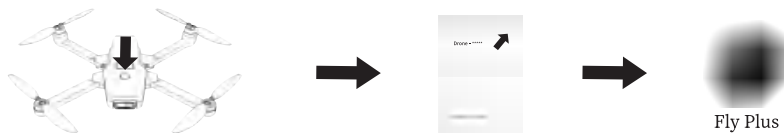
## 1.1 Download and install the software



## 1.2 Description of links

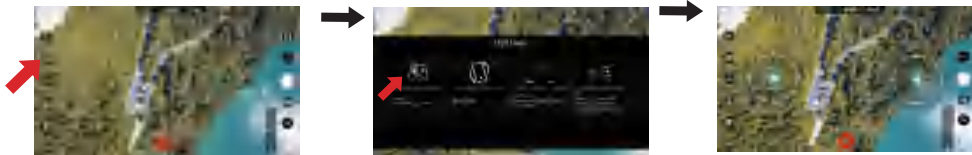
- ① Long press 3 seconds to turn on the power, enter (Mobile or IPAD) "Settings" option, open the wireless network, find the name of the device " Drone - \*\*\*\*\* " in the wireless network search list and connect it. After the connection is successful, exit the setting option.
- ② Open the "Fly Plus" software icon on your mobile phone and enter the control interface. (Try to stay away from other signal sources when flying)

⚠️ **Note: One drone, at the same time, only one mobile app is allowed to connect!**



# 2. Function introductions of APP control interface

## ● Control mode

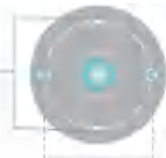


Notice:

After connecting to the aircraft, turn on the control in the control mode

## ● Rocker

Throttle slide up/down  
The aircraft will ascend /descend



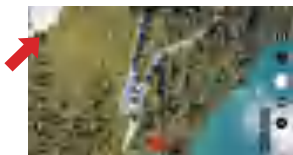
Steering: Swipe left/right  
The aircraft will rotate left/right



Side flight: swipe left/right  
The aircraft will fly left/right

Front/Back: Swipe up/down  
The aircraft will go forward /backward

## ● Gyro Calibration



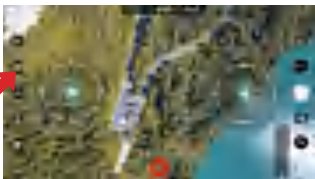
After the drone is successfully connected to the APP, open the APP and click the "More" function to calibrate the aircraft.

Note:

● Please calibrate the gyroscope before each take-off of the aircraft, the rear light of the drone flashes frequently during calibration.

## ● Flight modes

### 1. Gravity Sensing

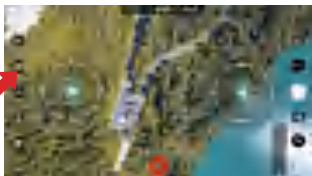


Gravity Sensing Mode: When the aircraft is successfully connected to the mobile APP, turn on the gravity sensing mode and tilt the phone to control the aircraft to fly forward, backward, left, and right.

Notice:

- This feature can only be done if you have enough airspace.
- This function cannot be used when the drone is in a low battery state.

### 2. 360° Flip



360° Flip: After clicking the 360° flip mode, slide the right joystick to the maximum in any direction, and the flight will roll in the corresponding direction.

Notice:

- Only execute rolls when you have plenty of airspaces. The drone can only perform flips when it is at least 7 feet in the air.
- This function can not be used when the drone is in a low power state.

### 3. Track Mode



Trajectory Mode: Draw a line on the screen, and the aircraft will fly according to the drawn trajectory.

Notice:

- This feature can only be done if you have enough airspace.
- This function cannot be used when the drone is in a low battery state.

Problem	Reasons	Solution
The flight not responding	<ol style="list-style-type: none"> <li>1. The drone enters low voltage protection</li> <li>2. When the power of the remote control is low, the power indicator will flash</li> </ol>	<ol style="list-style-type: none"> <li>1. Charge the aircraft battery</li> <li>2. Replacing the Remote Control Batteries</li> </ol>
The flight response of the aircraft is not sensitive	<ol style="list-style-type: none"> <li>1. The remote control is in low power</li> <li>2. Remote control with the same frequency is emitting interference</li> </ol>	<ol style="list-style-type: none"> <li>1. Replacing the Remote Control Batteries</li> <li>2. Change to a place that does not transmit interference on the same frequency</li> </ol>
Fly sideways when hovering	Did not proceed the calibration successfully	Proceed the calibration again(Preparation for Flight)
The direction of forwarding flight is detected in the headless state	Head deviation caused by multiple collisions	Redefine the front direction(Headless mode)
Unstablefixeheight/ shaking up and down	<ol style="list-style-type: none"> <li>1. Did not proceed the calibrationsuccessfully</li> <li>2. Unstable air pressure in bad weather conditions</li> <li>3. Severe collision causes gyroscope data disorder</li> </ol>	<ol style="list-style-type: none"> <li>1. Proceed the calibration again (Preparation for Flight)</li> <li>2. Try to avoid flying in bad weather</li> <li>3. Proceed the calibration again(Preparation for Flight)</li> </ol>

## After-sales information:

**FAKJANK**

FAKJANK |© ALL RIGHTS RESERVED

Please read the manual carefully before using the product and keep this manual for future reference.

This content is subject to change If you have any questions about this document, please contact FAKJANK by sending a message to us .

**E-mail: [fakjank@gmail.com](mailto:fakjank@gmail.com) (24hr/7d)**