

AIYIMA[®] AUDIO

**Bluetooth 5.1
JAN5725 Tube Amplifier**

USER MANUALS

Model: T9 PRO

Shenzhen Yima Technology Co.,Ltd

Website: www.aiyima.com

Telephone: 86-0755-28268551

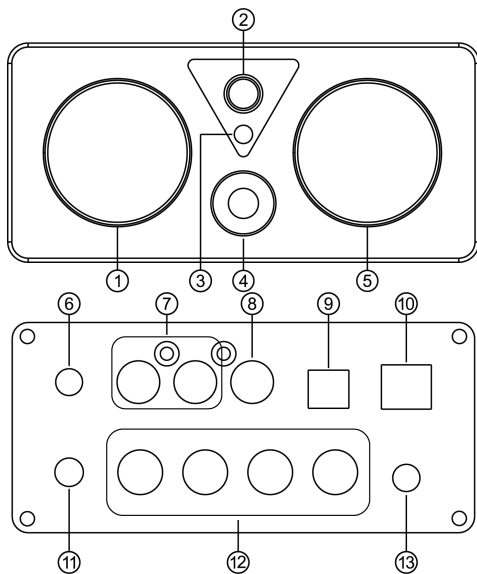
Location: 4F, Building 7 Hekan industrial park. Wuhe south road 41. Long-Gang district.

ShenZhen. CHINA. 518000

Email: sale@aiyima.com

VK: <https://vk.com/aiyima>

Front And Rear Panel Description

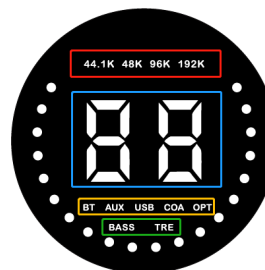


- ① ——— Segment code display screen
- ② ——— On/off/switch channel (short press: on/switch channel; long press: off)
- ③ ——— Infrared receiving window
- ④ ——— Encoder knob (turn left and right adjust the volume, short press mute, double click adjust the volume of treble and bass)
- ⑤ ——— VU level meter
- ⑥ ——— Bluetooth antenna base
- ⑦ ——— RCA input
- ⑧ ——— Coaxial input
- ⑨ ——— Optical input
- ⑩ ——— PC-USB input
- ⑪ ——— AUX Output
- ⑫ ——— Speaker interface (red/positive, black/negative; R connected to right speaker, L connected to left speaker)
- ⑬ ——— Power interface (DC voltage range 18-30V)

Operation Steps

1. Install the matching electronic tube into the electronic tube base according to the direction (the electronic tube is not divided into left and right, and pay attention to check whether the pin is deformed).
2. Connect the passive speaker to the speaker interface.
3. Connect the audio source to be used to the corresponding input interface.
4. Connect the power supply (DC voltage range: 18-30V).
5. Start and switch to the corresponding input channel.
6. Turn the encoder knob to the right to adjust the volume to a proper level.
7. Double click the encoder knob to adjust the treble and bass decibels ($\pm 9\text{dB}$).

Display Description Of Segment Code Screen

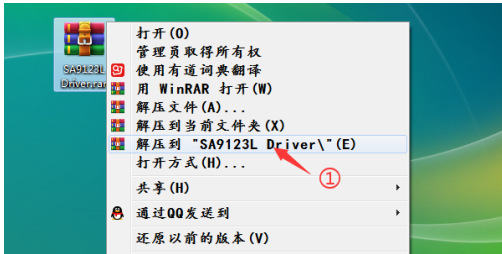


1. Red box: sampling rate
2. Blue box: volume value
3. Yellow box: input channel
4. Green box: left bass, right treble
5. White circle lamp (Beating with the frequency of music)

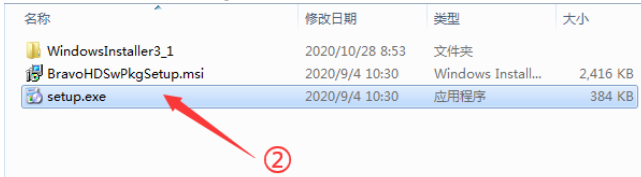
PC-USB Operation Instructions

1. Connect the PC-USB interface to the computer using the USB cable configured by the Original factory (USB supports hot plugging).
2. Short press the input selection key to switch to PC-USB input, and install the driver on the PC. (Please contact our company for installation files).

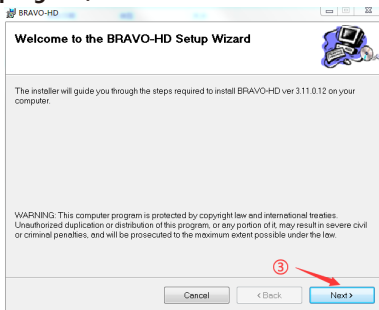
Installation steps are as follows:



After finding the installation file, right-click the "SA9123L Driver" file as shown in the figure, and click "Unzip to SA9123L Driver";

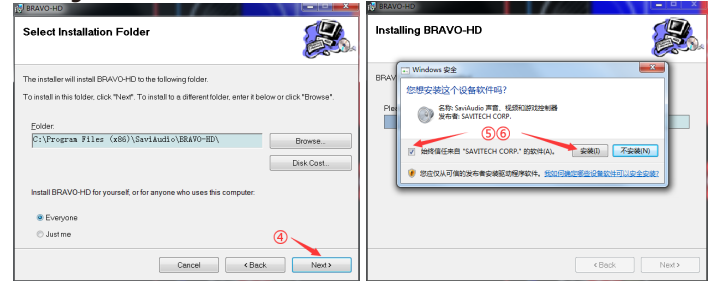


After unzipping, double-click "Setup. exe" to run the installation program;



3

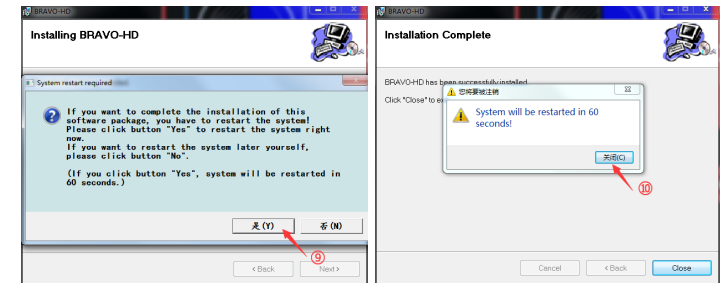
During installation, click "Next"



When prompted "Would you like to install this device software?", please choice "Always Trust..." And installation;



When the installation is completed, the system will prompt you to restart. Click "Yes" and wait for the restart to complete.



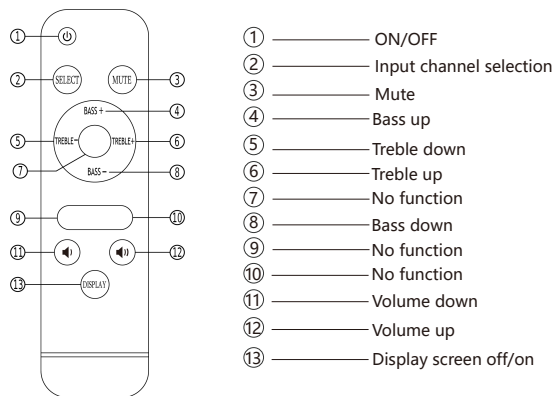
4

3. After the restart, find the speaker symbol in the bottom right corner of the desktop, right click the pop-up box, and click 【Play Device】



4. Select the USB device recognized by the PC in the pop-up box.
5. Click to confirm the identified digital output (USB HIFI Audio) and set it as the default value.

Remote Control Function Description



Specification Parameter

PC-USB Support the highest sampling rate	192K/24Bit	Maximum output power	100W*2 (4Ω)
PC-USB Supported Operating Systems	W7/W8/W10/MAC/Linux	AUX Output level	2V
Coaxial support the highest sampling rate	192KHz/24bit	Frequency response	20Hz-20KHz (±1.5dB)
Optical supports the highest sampling rate	192KHz/24bit	THD	0.03%
Bluetooth version	5.1	SNR	≥102dB
Input sensitivity	1.4V	Net weight	0.659kg
Working voltage	DC18-30V	Package Dimension	L100*W116*H54mm

FQA

Q: All my cables are connected, but there is no sound output?

- A: 1. Check whether the screen lights up. If the screen does not light up, briefly press the ON/OFF key to start the machine.
2. Check the screen volume value. If the volume value is too low, turn the encoder knob or the remote control to the right to increase the volume.
3. If the above two points are normal, check whether the playback device of the input sound source is paused, muted, or the volume is at the minimum.

Q: Why is the sound distorted?

- A: The input level may be too large. If the volume of the sound source equipment is adjusted to the maximum, and the volume of the machine is also adjusted to the maximum, it is easy to be distorted. At this time, turn down the volume of the sound source input device or machine.

Q: Why does the volume of the machine remain the same, but the sound level is different when connecting to different audio sources (for example, connect a CD first, then a mobile phone)?

- A: The amplitude of electrical signals output by different playback devices is different. For example, mobile phones are usually 0.35V, while CDs are 1V. The natural sound size is different.

Q: Why does the horn make a loud current sound?

- A: If you use a power supply other than the original standard, please replace the power supply before testing. Many power sources on the market have large interference coefficient of the text wave, which will cause a large current sound.

Q: Why does the speaker make a loud buzzing sound when I plug in the input cable and do not connect the playback source?

- A: When the unshielded signal line is unloaded, the interference signal will enter the power amplifier for amplification. It is recommended to replace it with shielded signal wire or unplug the signal wire.

Q: Why can't I find the Bluetooth pairing name?

- A: Since power consumption is considered in the design of this machine, Bluetooth does not work when other channels are used. You must switch to Bluetooth input mode to search for pairing.

Q: Can I change the tube directly without turning off the power?

- A: No, because the machine works under high voltage, the hot plug electronic tube may burn out and damage the machine.

Q: Why does Bluetooth sound intermittent?

- A: When using Bluetooth to test the distance, it is normal that the sound is not stuck or disconnected (without any obstacles) within 10 meters. (Note: The router will interfere with the Bluetooth signal. Don't get too close!)