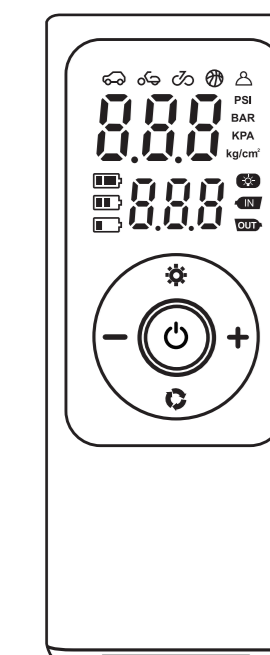


车载充气泵

用户手册



(使用前请详细阅读本手册)

警告

禁止儿童单独操作。
请勿在阳光直射或高温/高压下使用。
请勿将充气泵投入水中，请勿在雨中使用或在水中使用本机。
为避免火灾、爆炸、火灾、或爆炸，请仔细阅读并遵守所有警告和说明。
使用前请关闭电源开关。

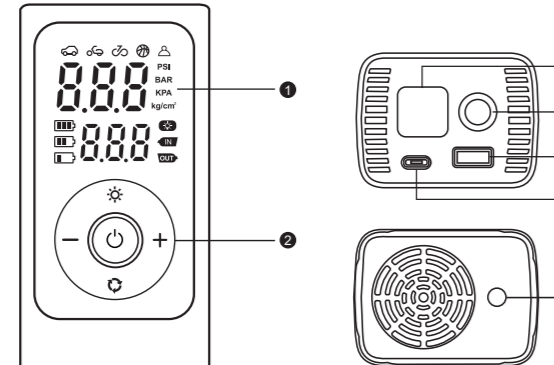
注意

为了减少触电的危险，不要暴露在雨中，存放在室内并远离火源。
注意：1.本产品正常使用时，应确保安全使用。
2.为确保充气泵良好工作，连续充气时间不应过长，如需长时间运转，请间歇性休息。

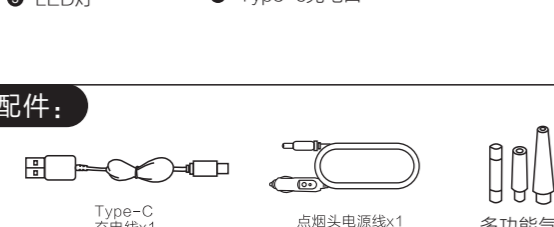
产品参数

产品名称	车充两用款
产品型号	CZK-5613
电压	11.1V
功率	100W

产品描述



配件



使用说明

使用说明 1 (电池供电)

*使用前请先充满电



使用说明 2 (点烟头电源线供电)

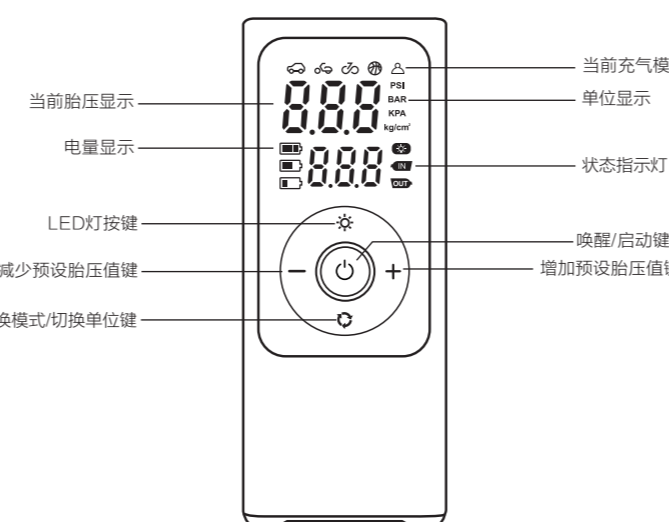


五种模式



预设胎压

长按“O”切换单位，按“+”或“-”键加减数值，设置完毕后需等待几秒，待数字停止闪烁后，打开充气开关开始工作。充气到指定气压，充气泵自动停止。



保修卡

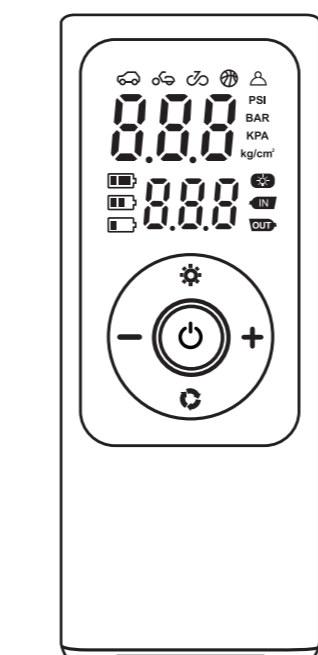
用户姓名	联系电话
用户地址	
电子邮箱	QQ号码
购买地址	经销商

保修说明

- 1.本保修卡请用户妥善保管，以作保修凭证，遗失恕不补发。
- 2.本产品购买之日起三个月内为保修期，在保修期内，因产品质量问题，用户可凭此卡随购机发票或发票复印件，向我司或当地经销商联系，由我司负责“三包”。
- 3.非质量问题，不在三包内。

Tire Inflator

USER MANUAL



(Please read this manual prior to using this product)

WARNING

Children must not operate the Tire Inflator alone.
Never use the Tire Inflator in direct sunlight, high temperatures, or high pressure environments.
Keep the Tire Inflator away from water and rain; it is not suitable for use in water. To avoid damage, excess heat, toxic fumes, fire, or explosion, turn off and allow the Tire Inflator to cool for 30 minutes after 10 minutes of use.
Always turn off the power switch after use.
Before using this product, carefully read all warnings and instructions. Improper use can result in product damage beyond the Seller's responsibility.

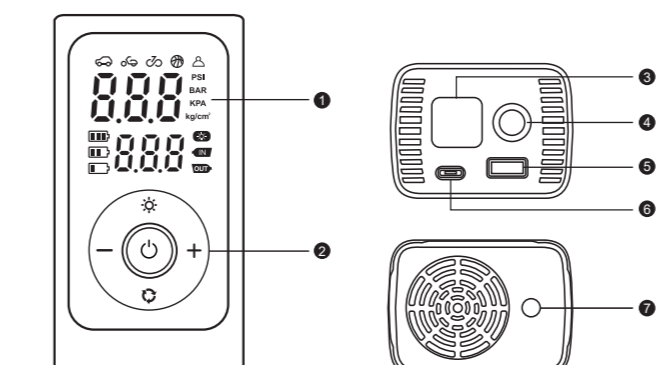
ATTENTION

To minimize the risk of electric shock, refrain from exposing your Tire Inflator to rain. It is recommended to store it indoors and away from any sources of fire.
Attention:
1. This product may experience slight heating during normal operation, which is deemed a typical occurrence.
2. In order to prolong the air pump's lifespan, we do not recommend continuous inflation for more than 10 minutes. Should prolonged use be necessary, intermittent breaks are advised to allow for the cooling down of your tire inflator.

PRODUCT PARAMETER

Product version	Corded and cordless
Product model	CZK-5613
Voltage	11.1V
Power	100W

LAYOUT



- Digital display screen
- Operation buttons
- LED light
- Air hose port
- USB output
- Type-C Charging port
- Cigarette lighter cord port

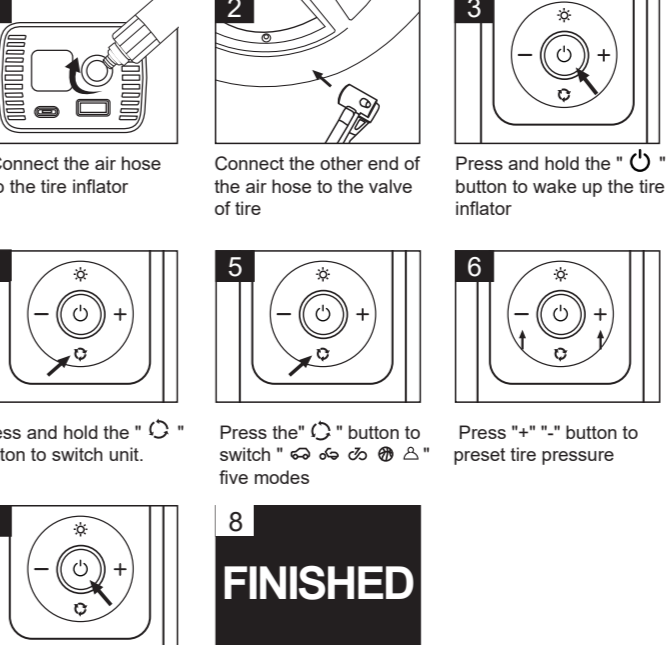
Accessory



OPERATION GUIDE

Instructions for use 1 (Battery powered)

*Please charge it fully before use



Instructions for use 2 (Cigarette-end power supply)

*Please charge it fully before use

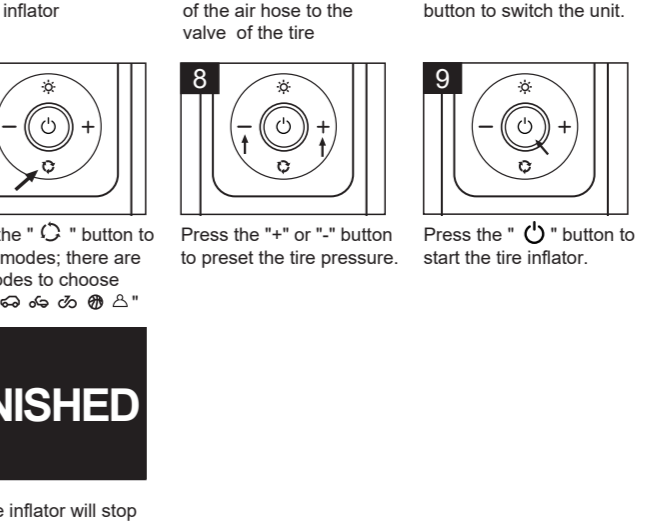


Five modes

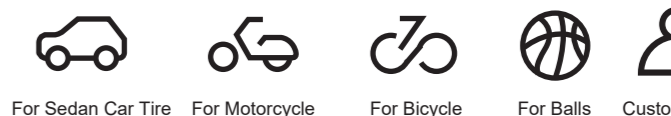


Preset tire pressure

Press and hold "O" to switch the unit. Use the "+" or "-" button to adjust the numerical value, and wait a few seconds after setting for the numbers to stop flashing. Then turn on the inflation switch to start the process. The tire inflator will automatically stop inflating when it reaches the specified air pressure.



Five modes



Preset tire pressure

Press and hold "O" to switch the unit. Use the "+" or "-" button to adjust the numerical value, and wait a few seconds after setting for the numbers to stop flashing. Then turn on the inflation switch to start the process. The tire inflator will automatically stop inflating when it reaches the specified air pressure.

