



LED STRIPLIGHT AND STAIRWELL FIXTURE

► **DESIGN** - LED STRIPLIGHT FIXTURE has a narrow, low-profile design. Durable commercial grade housing resistant to rust and impact along with an anti-glare PMMA lens provide many years of use. It is designed to operate on 120-277V circuits with a 0-10V dimmable driver.

► **COLOR AND POWER SELECTABLE** - You can choose either a 3,500K neutral white, 4,000K cool white or 5,000K daylight color temperature, and change the power with a simple switch.

► **MOTION SENSOR** - The built-in microwave motion sensor will turn off the fixture automatically when no motion is detected. The sensor can be adjusted using the handheld remote.

► **BATTERY BACK-UP** - The built-in battery back-up provides 90 minutes of power in case of emergency.

► **LINKABLE DESIGN** - Design of the fixture allows to connect multiple fixtures together with connection bracket.

► **APPLICATION** - Perfect commercial or industrial solution for office buildings, schools, hospitals, hallways, stairwells, workshops, and many other applications. It is also Damp Locations rated.

► **ADVANTAGES** - With calculated lifespan up to 174,000 hours, these fixtures are made to last decades under normal operation! ASD provides a 5-year limited warranty along with UL and DLC Standard certifications to guarantee top quality products and safety!



PRODUCT PRESENTATION:

Model	Type	Power	Voltage	Dimming	Lumens	CCT	Dimensions	Pre-installed	Certification	
LSF5										
ASD-LSF5-2A28AC-PRM	2 ft	28/24/20W	120-277V	0-10V	2,646/3,325/3,890lm	3CCT (3,500/4,000/5,000K)	26-3/16" x 2-5/8" x 2-11/16"	-	UL (E473804), DLC	
ASD-LSF5-4A44AC-PRM	4 ft	44/36/28/22W	120-277V	0-10V	3,205/3,969/5,045/5,853lm	3CCT (3,500/4,000/5,000K)	46-5/8" x 2-5/8" x 2-11/16"	-	UL (E473804), DLC	
ASD-LSF5-8A90AC-PRM	8 ft	90/68/48W	120-277V	0-10V	6,390/9,254/12,534lm	3CCT (3,500/4,000/5,000K)	92-13/16" x 2-5/8" x 2-11/16"	-	UL (E473804), DLC	
LSF5-EM WITH BATTERY BACK-UP										
ASD-LSF5-2A28AC-4EM-PRM	2 ft	28/24/20W	120-277V	0-10V	2,646/3,325/3,890lm	3CCT (3,500/4,000/5,000K)	26-3/16" x 2-5/8" x 2-11/16"	4W Battery back-up	UL (E473804), DLC	
ASD-LSF5-4A44AC-12EM-PRM	4 ft	44/36/28/22W	120-277V	0-10V	3,205/3,969/5,045/5,853lm	3CCT (3,500/4,000/5,000K)	46-5/8" x 2-5/8" x 2-11/16"	12W Battery back-up	UL (E473804), DLC	
ASD-LSF5-8A90AC-EM-PRM	8 ft	90/68/48W	120-277V	0-10V	6,390/9,254/12,534lm	3CCT (3,500/4,000/5,000K)	92-13/16" x 2-5/8" x 2-11/16"	15W Battery back-up	UL (E473804), DLC	
LSF5-MS STAIRWELL WITH MOTION SENSOR										
ASD-LSF5-2A28AC-MS-SW	2 ft	28/24/20W	120-277V	0-10V	2,646/3,325/3,890lm	3CCT (3,500/4,000/5,000K)	26-3/16" x 2-5/8" x 2-11/16"	Motion sensor	UL (E473804), DLC	
ASD-LSF5-4A44AC-MS-SW	4 ft	44/36/28/22W	120-277V	0-10V	3,205/3,969/5,045/5,853lm	3CCT (3,500/4,000/5,000K)	46-5/8" x 2-5/8" x 2-11/16"	Motion sensor	UL (E473804), DLC	
ASD-LSF5-8A90AC-MS-PRM	8 ft	90/68/48W	120-277V	0-10V	6,390/9,254/12,534lm	3CCT (3,500/4,000/5,000K)	92-13/16" x 2-5/8" x 2-11/16"	Motion sensor	UL (E473804), DLC	
LSF5-EM-MS STAIRWELL WITH MOTION SENSOR AND BATTERY BACK-UP										
ASD-LSF5-4A44AC-12EM-MS-SW	4 ft	44/36/28/22W	120-277V	0-10V	3,205/3,969/5,045/5,853lm	3CCT (3,500/4,000/5,000K)	46-5/8" x 2-5/8" x 2-11/16"	12W Battery back-up, Motion sensor	UL (E473804), DLC	
REMOTE										
ASD-RC100LCD	Remote control for motion sensor							4-7/8" x 2-3/4" x 3/4"	-	-

For most up-to-date spec sheets please refer to asd-lighting.com



LED STRIPLIGHT AND STAIRWELL FIXTURE

TECHNICAL PARAMETERS:

Model	Max input current	Inrush current	Work environment	Operating temperature	Power factor	Surge protection	Housing	Lens	CRI
LSF5									
ASD-LSF5-2A28AC-PRM	0.26A	50A	Damp location	-4°F to 104°F (-20°C to 40°C)	> 0.9	2kV	Metal	PMMA	> 80
ASD-LSF5-4A44AC-PRM	0.41A	50A	Damp location	-4°F to 104°F (-20°C to 40°C)	> 0.9	2kV	Metal	PMMA	> 80
ASD-LSF5-8A90AC-PRM	0.8A	55A	Damp location	-4°F to 104°F (-20°C to 40°C)	> 0.9	2kV	Metal	PMMA	> 80
LSF5-EM WITH BATTERY BACK-UP									
ASD-LSF5-2A28AC-4EM-PRM	0.26A	50A	Damp location	-4°F to 104°F (-20°C to 40°C)	> 0.9	2kV	Metal	PMMA	> 80
ASD-LSF5-4A44AC-12EM-PRM	0.41A	50A	Damp location	-4°F to 104°F (-20°C to 40°C)	> 0.9	2kV	Metal	PMMA	> 80
ASD-LSF5-8A90AC-EM-PRM	0.8A	55A	Damp location	-4°F to 104°F (-20°C to 40°C)	> 0.9	2kV	Metal	PMMA	> 80
LSF5-MS STAIRWELL WITH MOTION SENSOR									
ASD-LSF5-2A28AC-MS-SW	0.26A	50A	Damp location	-4°F to 104°F (-20°C to 40°C)	> 0.9	2kV	Metal	PMMA	> 80
ASD-LSF5-4A44AC-MS-SW	0.41A	50A	Damp location	-4°F to 104°F (-20°C to 40°C)	> 0.9	2kV	Metal	PMMA	> 80
ASD-LSF5-8A90AC-MS-PRM	0.8A	55A	Damp location	-4°F to 104°F (-20°C to 40°C)	> 0.9	2kV	Metal	PMMA	> 80
LSF5-EM-MS STAIRWELL WITH MOTION SENSOR AND BATTERY BACK-UP									
ASD-LSF5-4A44AC-12EM-MS-SW	0.41A	50A	Damp location	-4°F to 104°F (-20°C to 40°C)	> 0.9	2kV	Metal	PMMA	> 80

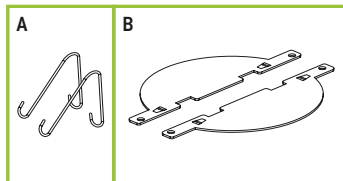
DIMMING COMPATIBLE CONTROLS:

Brand	Leviton	Lutron	Legrand
Models	DS710 IP710	NTSTV-DV DVTV-WH	NFTV H4FBL3PW

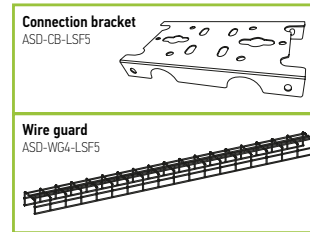
* The list of dimmers is relevant for models without a motion sensor.

PACKAGE CONTENTS:

Description	Quantity
LED Striplight and Stairwell Fixture	1
V Hook (A)	2
J-box mounting plate (B)	2
Box	1



ACCESSORIES (sold separately):



ACCESSORY COMPATIBILITY LIST:

Model	Accessories	
	Connection bracket ASD-CB-LSF5	Wire guard ASD-WG4-LSF5
ASD-LSF5	2 ft	•
	4 ft	• •
	8 ft	• •

BUILT-IN BATTERY BACK-UP INFORMATION

- ▶ Standard CSA C22.2 NO.141, UL924
- ▶ Battery Back-up Lithium Battery
- ▶ Battery Protection: over-charge, over-discharge and short circuit protection
- ▶ The wall switch only controls the main power, it does not affect emergency function.
- ▶ Indicator light modes: Red light ON – the emergency driver is charging in standby mode; Red light OFF – AC power is out, the emergency driver works in emergency mode.
- ▶ Press Test button and release to cut the power to the AC driver and switch the system to emergency mode. The Red light will turn off, and the fixture will decrease in light amount. The system will come back to normal AC mode after about 3 seconds.
- ▶ Batteries Meet 500 cycles of standard CH and standard DCH.
- ▶ RoHS compliant

AC Operation: When AC power is present, the LED load from the LED driver is the normal power supply, AC LED driver output current cannot exceed 150W or 4A (2A for 2ft model). The emergency driver will be charging in standby mode as indicated by the red LED light.

Emergency operation: When the AC power goes out, the emergency driver detects the AC power outage and automatically switches to the working emergency mode. The red LED light will be off. When the AC power is restored, the emergency driver switches back to AC power and starts re-charging. The red LED light will then turn back on. For 4ft: In emergency mode, press three-seconds (3S) the test switch to turn off the current emergency state. For 2ft: In Emergency mode, double-click the test button, to turn off the emergency mode.

⚠ WARNING

This product should be installed by a qualified electrician. Connecting wires when power is on is not allowed. Power can be turned on after making sure that there is no phenomenon of short circuit and the connection is ok.

Model	Battery capacity	Max emergency output power	Battery back up current	Battery back up operation time	Battery voltage	Lumens
ASD-LSF5-2A28AC-4EM-PRM	2,500 mAh	4W	250 mA	≥ 90 minutes	3.7 V	720 lm
ASD-LSF5-4A44AC-12EM-PRM	2,500 mAh	12W	250 mA	≥ 90 minutes	11.1 V	1,950 lm
ASD-LSF5-4A44AC-12EM-MS-SW	2,500 mAh	12W	250 mA	≥ 90 minutes	11.1 V	1,950 lm
ASD-LSF5-8A90AC-EM-PRM	3,000 mAh	15W	250 mA	≥ 90 minutes	9.6 V	2,400 lm

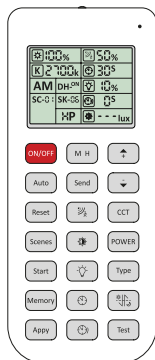
For most up-to-date spec sheets please refer to asd-lighting.com



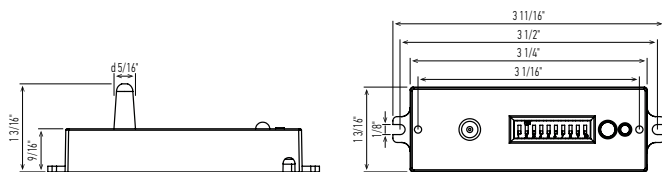
LED STRIPLIGHT AND STAIRWELL FIXTURE

BUILT-IN MOTION SENSOR INFORMATION

REMOTE CONTROL **ASD-RC100LCD** sold separately



Button	Remarks	Button	Remarks	Button	Remarks
ON/OFF	ON/OFF Turn the sensor ON/OFF.	M H	Mounting height Adjust detection area/sensitivity levels according to real installation situations, higher or lower.	Up	The main functional buttons to adjust the factors to desired level. Press + - button to dim light directly auto in non-detection mode.
Auto	Auto Enter "sensor mode" and perform previous settings.	Send	Send Memorize and send out the previous setting of individual parameters.	Down	
Reset	Reset Go back to default program. Enter into "sensor mode" and perform the default program.	%	Detection range Also known as "sensitivity", 100 % means the highest sensitivity and longest distance. Use this button and the + - buttons to adjust.	CCT	CCT selectable Not applicable to this product.
Scenes	Scenes Shows current settings saved in remote.	Daylight sensor	Daylight sensor The preset lux level at which motion will be detected. Use this button and the + - buttons to adjust.	POWER	Power Adjust brightness in both ON/OFF mode & sensor mode. minimum 10%, max 100%, each time this button is pressed it changes by 5%.
Start	Start Press this to begin scene setup.	Stand-by dimming	Stand-by dimming After hold time, the light will dim from 100 % to optional standby dimming levels. Use this button and the + - buttons to adjust.	Type	Type Press this button to choose different remotes: ASD-RC-RC100, ASD-RC-RC200, ASD-06RC
Memory	Memory Saves the scene settings.	Hold time	Hold time The period that light will stay illuminated 100 % after no motion is detected. Use this button and the + - buttons to adjust.	Daylight harvesting	Daylight harvesting Daylight harvesting function enabled or disabled.
Apply	Apply Applies current scene settings to the fixture.	Stand-by period	Stand-by period The period after holdtime, during which the light keeps standby dimming level. Use this button and the + - buttons to adjust.	Test	Test button Press this button to test the sensor; it will temporarily change the hold time to 2s. This setting cannot be saved.



SENSOR SETTING:



Please follow the additional motion sensor manual to set up your motion sensor.

Specifications	Model: ANT-8A
Power supply	12-24 Vdc
HF system	5.8 GHz ± 75 MHz
Dim control output	0-10 V, max 25 mA sinking current
Detection radius/angle	max 26ft (8 m) / 360°
Mounting height	max 12 ft (3.7 m)
Remote range	50 ft (15 m) indoor, no backlight
Humidity	max 95% RH
Temperature	- 40°F - 158°F (-40°C - 70°C)

⚠ RF interference may affect the operation of this sensor.

DEFAULT SETTING:

Detection area	Hold time	Daylight sensor	Stand-by period	Stand-by dim level
100 %	5 min	Disable	+ ∞	10 %

Detection area, hold time, stand-by period, stand-by DIM level and daylight sensor can be set by using DIP switches on the sensor. Note that reducing the detection area will also reduce the sensitivity.

ON	1	2	
I	-	-	20 %
II	-	ON	50 %
III	ON	-	75 %
IV	ON	ON	100 %

Detection range:

Detection range is the term used to describe the radii of the detection zone produced on the ground after mounting the sensor light at a height of 8-20ft.

ON	3	4	
I	-	-	10 s
II	-	ON	1 min
III	ON	-	5 min
IV	ON	ON	15 min

Hold time: The light can be set to stay ON for any period of time between approx. 10sec and a maximum of 15min. Any movement detected before this time elapses will restart the timer. It is recommended to select the shortest time for adjusting the detection zone and for performing the walk test.

ON	5	6	
I	-	-	-
II	-	ON	10 lux (0.9 fc)
III	ON	-	30 lux (2.8 fc)
IV	ON	ON	50 lux (4.7 fc)

Daylight sensor:

The chosen light response threshold can be infinitely from approx.

ON	7	8	
I	-	-	0 %
II	-	ON	10 %
III	ON	-	30 %
IV	ON	ON	50 %

Stand-by dimming level:

This is the preset dimming level you would like to have after the hold time in the long absence of people.

ON	9	10	
I	-	-	+ ∞
II	-	ON	1 min
III	ON	-	30 min
IV	ON	ON	60 min

Stand-by period:

Refers to the time period the lamp remains at a preset dimming level before it completely switches off in the long absence of people.

For most up-to-date spec sheets please refer to asd-lighting.com



LED STRIPLIGHT AND STAIRWELL FIXTURE

INSTALLATION GUIDE

IMPORTANT SAFETY INFORMATION:

Please read all the instructions below before installation!

- ▶ Make sure that the supply voltage corresponds to the rated product voltage.
- ▶ The product must be installed by a qualified electrician in accordance with the National Electrical Code and corresponding local codes.
- ▶ If the product is damaged, do not use it.

⚠ WARNING

Risk of personal injury – read and follow all warnings and installation instructions. Keep or give to the owner for future reference.

Risk of cuts: Wear gloves to prevent cuts or abrasions when removing from carton, handling, installing, and maintaining this product.

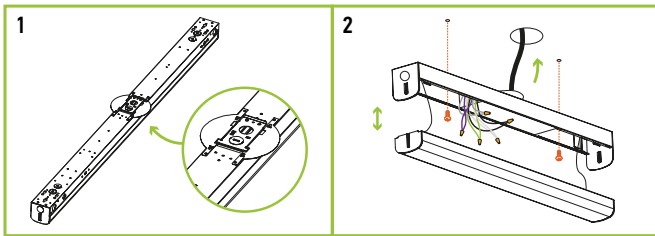
Risk of electric shock: This product must be installed in accordance with the applicable installation code by a person familiar with the construction and operation of the product and the hazards involved.

Risk of Fire: Minimum 194°F supply conductors. Consult a qualified electrician to ensure correct branch circuit conductor.

ASD® assumes no responsibility for claims arising out of improper or careless Installation or handling of this product.

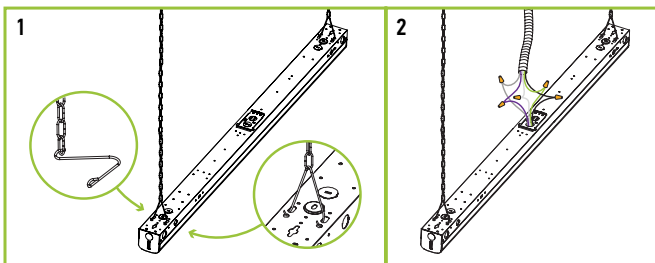
SURFACE MOUNT INSTALLATION:

1. Lock the J-box mounting plate to the middle of the fixtures backplate. Open fixture, pass the wires through the hole on the back side of the fixture.
2. Affix the fixture's base to the ceiling using anchor screws (not included) and connect the wires: Black to Black, White to White, Green to Green. Then close the fixture back.



CHAIN MOUNT INSTALLATION:

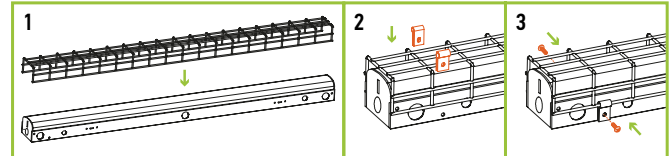
1. Insert chain on each hook and insert the hook into the installation holes. Attach the chain to the ceiling and adjust until balanced and secure.
2. Connect wires from fixture to power supply. Contain wires in metal or plastic wire hose.



WIRE GUARD INSTALLATION:

ASD-WG4-LSF5 sold separately

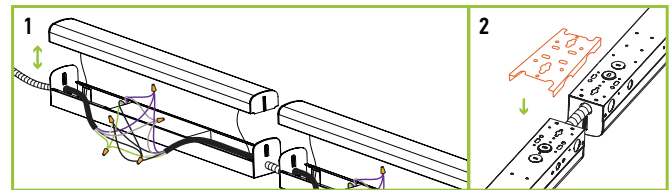
1. Install the wire guard to the fixture.
2. Insert the provided chips (4 pcs) onto the wire guard.
3. Fasten the chips by drilling screws into the pre-punched holes of fixture body.



CONNECTING MULTIPLE FIXTURES:

ASD-CB-LSF5 sold separately

1. Open the fixture and remove the knockout on the side of the fixture according to your needs. Feed the wires through the knockout hole and connect with fixture wires inside of the luminaire. If 0-10v dimming system is available, connect the purple and gray wires to the corresponding purple and gray wires in the built-in dimming system. **CAUTION:** Customer supplied AC wire must be 16AWG.
2. If need to affix one fixture to another please use connection bracket (sold separately). Repeat the process for the next fixture.



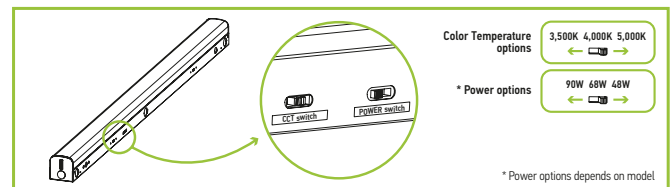
POWER AND COLOR TEMPERATURE SETTINGS:

Changing color temperature:

Change the position of the CT switch on the housing according to the required CT mode.

Changing power mode:

Change the position of the power switch on the housing according to the required power mode.



For most up-to-date spec sheets please refer to asd-lighting.com



LED STRIPLIGHT AND STAIRWELL FIXTURE

ORDERING INFORMATION

Model	Product dimensions	Weight	Pcs. per carton	Carton size	Carton weight	UPC	GTIN 14
LSF5							
ASD-LSF5-2A28AC-PRM	26-3/16" x 2-5/8" x 2-11/16"	1.8 lbs (0.8 kg)	8	27.8" x 12.5" x 6.7"	28 lbs	810050737975	10810050737972
ASD-LSF5-4A44AC-PRM	46-5/8" x 2-5/8" x 2-11/16"	2.9 lbs (1.3 kg)	8	48.3" x 12.5" x 6.7"	38 lbs	810050730242	10810050730249
ASD-LSF5-8A90AC-PRM	92-13/16" x 2-5/8" x 2-11/16"	5.5 lbs (2.5 kg)	4	94.6" x 6.4" x 6.7"	45.9 lbs	810050730273	10810050730270
LSF5-EM WITH BATTERY BACK-UP							
ASD-LSF5-2A28AC-4EM-PRM	26-3/16" x 2-5/8" x 2-11/16"	1.8 lbs (0.8 kg)	8	27.8" x 12.5" x 6.7"	49.4 lbs	810050738514	10810050738511
ASD-LSF5-4A44AC-12EM-PRM	46-5/8" x 2-5/8" x 2-11/16"	2.9 lbs (1.3 kg)	8	48.3" x 12.5" x 6.7"	47.1 lbs	810050736053	10810050736050
ASD-LSF5-8A90AC-EM-PRM	92-13/16" x 2-5/8" x 2-11/16"	5.3 lbs (2.4 kg)	4	94.6" x 6.4" x 6.7"	47.8 lbs	810050730280	10810050730287
LSF8 WITH BATTERY BACK-UP							
ASD-LSF5-2A28AC-MS-SW	26-3/16" x 2-5/8" x 2-11/16"	2.4 lbs (1.1 kg)	8	27.8" x 12.5" x 6.7"	28 lbs	810050737982	10810050737989
ASD-LSF5-4A44AC-MS-SW	46-5/8" x 2-5/8" x 2-11/16"	3.5 lbs (1.6 kg)	8	48.3" x 12.5" x 6.7"	39 lbs	810050730266	10810050730263
ASD-LSF5-8A90AC-MS-PRM	92-13/16" x 2-5/8" x 2-11/16"	6 lbs (2.7 kg)	4	94.6" x 6.4" x 6.7"	45.9 lbs	810128112819	10810128112816
LSF8 WITH Q-BASE AND BATTERY BACK-UP							
ASD-LSF5-4A44AC-12EM-MS-SW	46-5/8" x 2-5/8" x 2-11/16"	6.5 lbs (3 kg)	8	48.3" x 12.5" x 6.7"	47.5 lbs	810050736060	10810050736067

ACCESSORIES:

Model	Product dimensions	Pcs. per carton	Carton size	Carton weight	UPC	GTIN 14 in carton
ASD-RC100LCD	5-13/16" x 2-3/4" x 1"	80	12.8" x 12.8" x 12.8"	25.2 lbs	810190200520	10810190200527
ASD-CB-LSF5	5-1/4" x 2-3/4" x 11/16"	100	14.3" x 5.7" x 8.1"	20.9 lbs	810050730747	10810050730744
ASD-WG4-LSF5	46-13/16" x 3-1/4" x 2-3/8"	8	47.8" x 10.6" x 7.3"	14.3 lbs	819201027149	10819201027146

For most up-to-date spec sheets please refer to asd-lighting.com

ASD LIGHTING CORP

E-mail: orders@asd-lighting.com | Web site: www.asd-lighting.com

