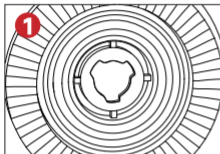


LASFIT®

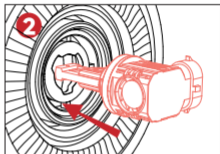
LED *Air*
LIGHTING

Installation Guide

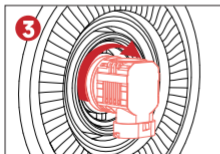
H11/H8/H9, 9005, 9006, H13, H10, 5202, PSX24W



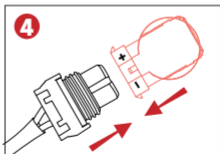
1. Twist out the original bulb.



2. Insert the bulb as the direction of the arrow.



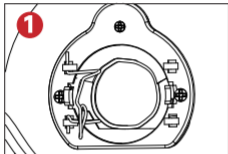
3. Lock the bulb by rotating 45 degrees clockwise.



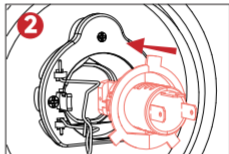
4. Plug in the power cord.

Installation Guide

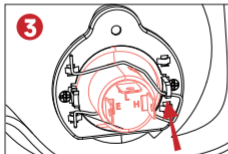
H7, H1, H4



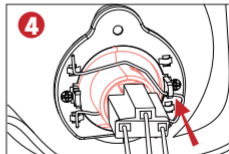
1. Unlock the latch/spring, take out and unplug halogen bulb.



2. Insert the LED bulb as the direction of the arrow.



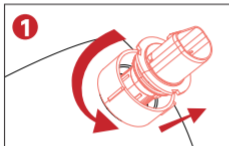
3. Lock the LED bulb with the latch.



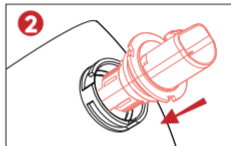
4. Plug in the power cord.

Installation Guide

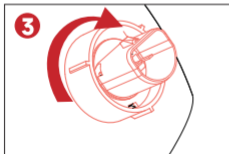
9007, 9004



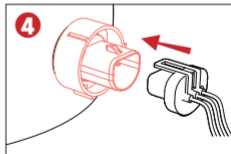
1. Unlock the lock ring, and take out halogen bulb.



2. Insert the LED bulb as the direction of the arrow.



3. Insert the LED bulb into the housing and lock it with the locking ring.



4. Plug in the power cord.

Decoder and Notification

Some vehicles may have compatible issues, such as flickering, error code or radio interference, the canbus decoder or load resistors probably are required. Please contact us for support by email if you're not sure if you need the canbus decoder or load resistors.



Frequently Asked Questions

1. I installed your bulbs but they do not turn on?

We first would highly recommend checking your fuses, if the fuses are good, next we would recommend putting back the stock bulbs to see if they light up. If they do light up then the LED bulbs may be defective, please contact us for support by email.

2. Why is my bulb flickering/dimming or dashboard error message occurring?

The wattage of LED bulb is lower than the stock halogen bulb, and the computer inspection system checks it's abnormal and causes compatible issues. The canbus decoder maybe required, please contact us for support by email.

3. How do I know if my vehicle requires extra can bus decoders?

- The LED bulbs keep flickering when they are working.
- An error code indicator appears on the dash.
- The LED bulbs stay lit for a while even after you have switched them off.
- The bulbs give off a dim light unlike the bright throw of LEDs.

4. How does a canbus decoder/load resistor work?

The canbus decoders/load resistors help LED bulbs get approved in the computer inspection system by increasing the wattage or providing more information.

NOTE:

- For safety consideration, please turn off the lights before installation.
- If the LED bulbs don't work or cause an error code on the dash, please contact us for support by email or calling us! Do not attempt to repair the product by yourself!

Product Specification

Input Power	35W/Per Bulb(H7/H1: 30W/Bulb)
Luminous Flux(LM)	3800LM/Per Bulb(H7/H1: 3500LM/Bulb)
Color Temperature	6000K
Operating Voltage	DC 12-16V
Waterproof Level	IP67
Lighting Source	CSP Flip Chips
Built-in Driver	Yes
Cooling system	High Efficiency Hydraulic Fan

Warranty & Customer Service



45 Days Money-Back Guarantee(the return shipping label provided)



1 Year Hassle-Free Warranty



24 Hours Email Response



Local Support Service in Ontario, California



cs@lasfit.com



(909) 758-7900

Note: Our warranty will NOT cover installation service, labor cost, diagnostics or any other expense related to item being defective/damage.

LASFIT®

LASFIT AUTO LIGHTING SAFE & STYLISH

Email: cs@lasfit.com