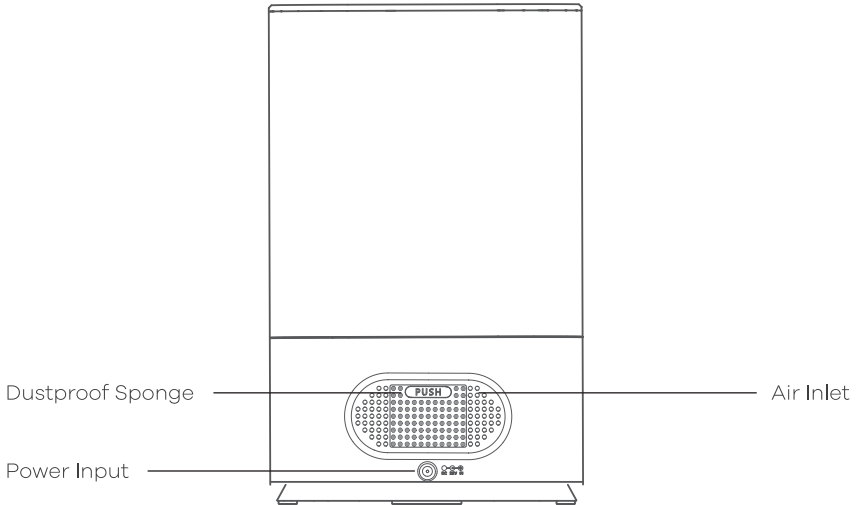
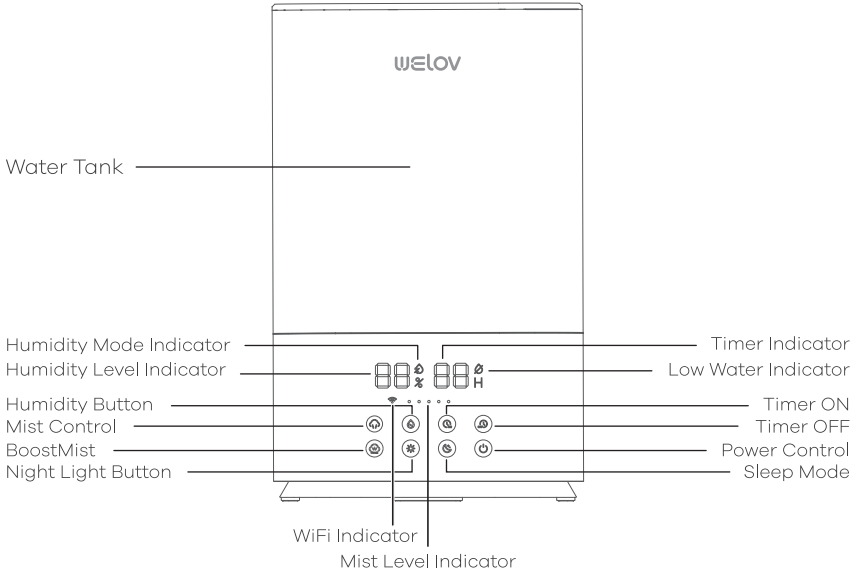
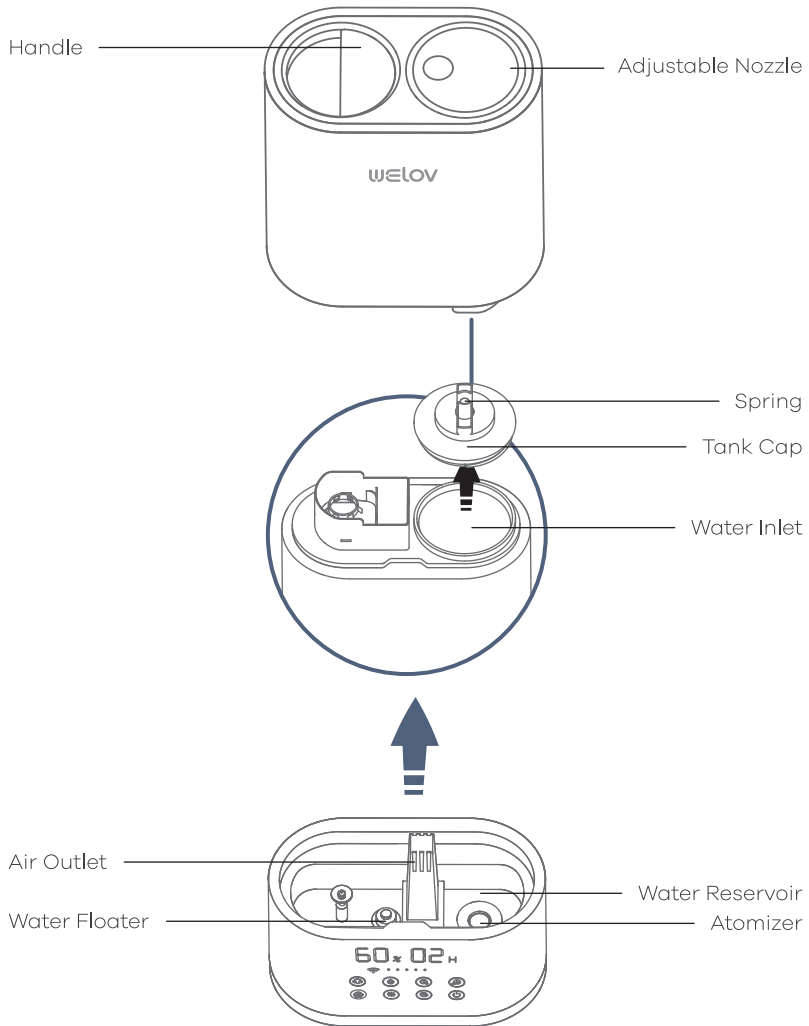


# PRODUCT OVERVIEW

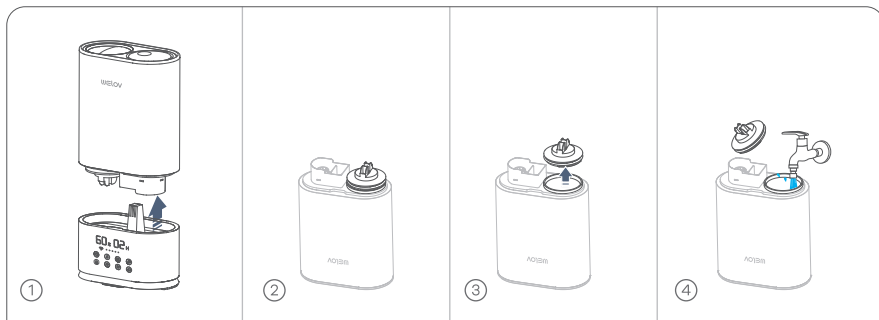




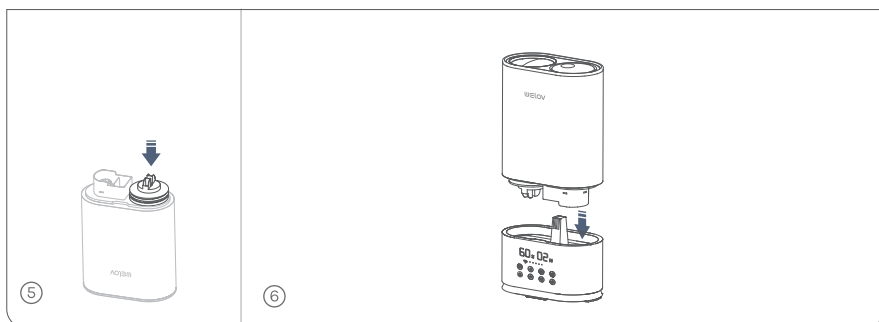
# OPERATION GUIDE

## ADD WATER

1. Separate the **Water Tank** from the **Base**, turn the **Water Tank** upside down (①), loosen the **Tank Cap** (②③), then fill the tank with clean cool water (④).



2. Tighten the **Tank Cap** (⑤), then turn the **Water Tank** upright and put it back on the **Base** (⑥).

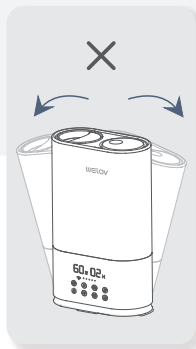
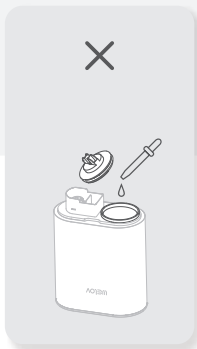
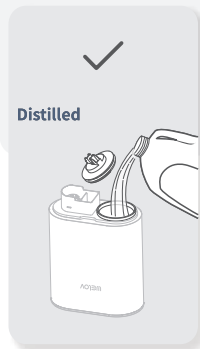


### Tips:

1. Make sure that the **Water Tank** and the **Base** are well fitted so that the water can go to the **Water Reservoir**.
2. Please make sure that the sealing ring is well installed on the **Tank Cap**.

### Important:

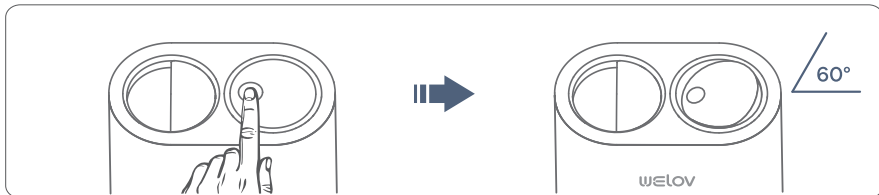
- ① If the tap water is too hard, we recommend using the filtered or distilled water to avoid white dust. DO NOT use hot water.
- ② DO NOT add any essential oils or medicinal tablets into the **Water Tank**.
- ③ DO NOT add water into the **Base** or through **the Nozzle**.
- ④ DO NOT move the humidifier while the **Water Tank** is full of water to avoid leakage or **Base** overflowing.



## OPEN / CLOSE NOZZLE

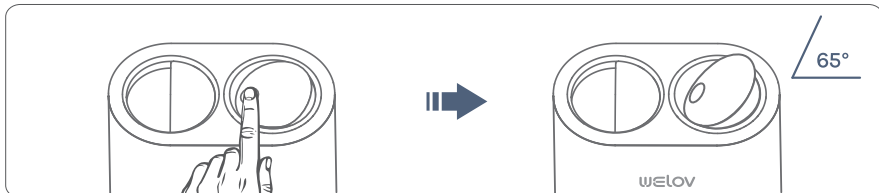
### Step 1:

Press the top of NOZZLE, the NOZZLE will open on 60°.



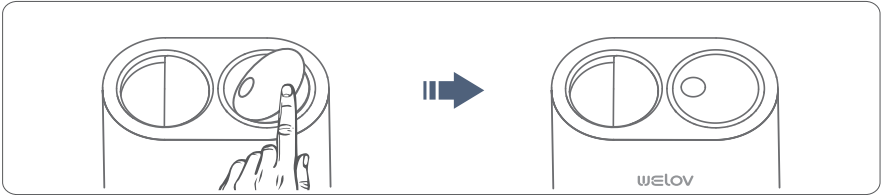
### Step 2:

Press again the top of NOZZLE, the NOZZLE will open on 65°.



**Step 3:**

Press the top of NOZZLE when the nozzle closing, the NOZZLE will close.



**Tips:**

The best MIST condition is NOZZLE on 65°.

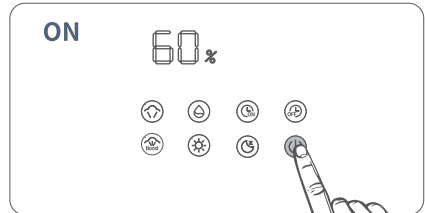
## 🔌 POWER ON/OFF AND MIST CONTROL

**Step 1:**

Connect the **Power Adapter** to the humidifier and plug it into the socket. Open the **NOZZLE**.

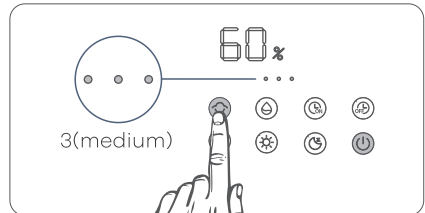
**Step 2:**

Press the **Power Control** to turn on the humidifier. The **display area** and **Mist Level Indicator** will light up in solid white at the same time, and the mist will be the minimum level by default.



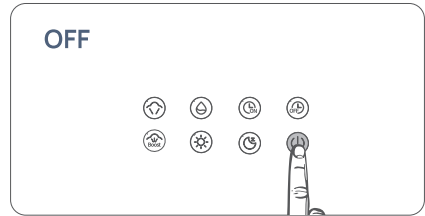
**Step 3:**

There are five mist options for this humidifier, which include 1(lower), 2(low),3(medium),4(high),5(higher). When the unit is on, press the **Mist Control** to cycle through five mist options, and the Mist level indicator will light up.



**Step 4:**

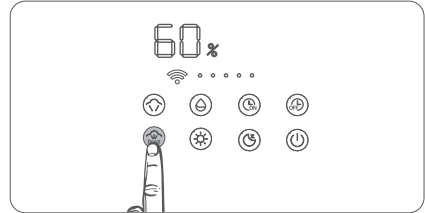
Press the **Power Control** again to turn off the humidifier and **Mist Level Indicator** will be off.



## BOOSTMIST

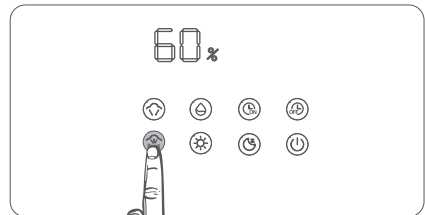
**Step 1:**

Press the **BoostMist** button to adjust the mist to maximum intensity.



**Step 2:**

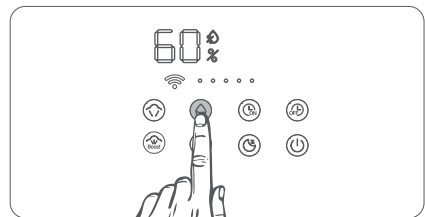
30 minutes later the mist intensity will automatically return to the state before activating this function. Or press the **BoostMist** button again



## HUMIDITY SETTING

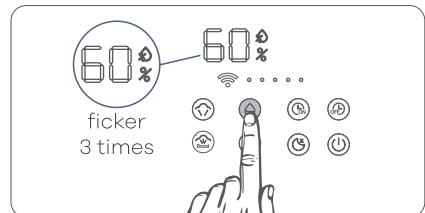
**Step 1:**

Press the **Humidity Button** to set the humidity level from 30% to 95% with an increase/ decrease of 5% in each tap.



**Step 2:**

The humidity level set will flicker three times to confirm your setting.



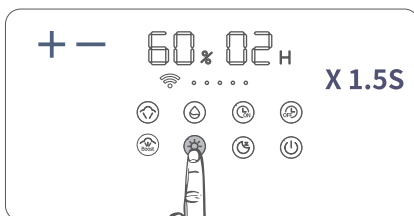
The most comfortable environmental humidity is between 40%-60%. Please adjust the mist as needed.

## NIGHT LIGHT

- 1 Press the **Night Light** button to turn on the light at the bottom. The default brightness is set to the medium level.



- 2 Long press the **Night Light** button for 1.5S to adjust the brightness.



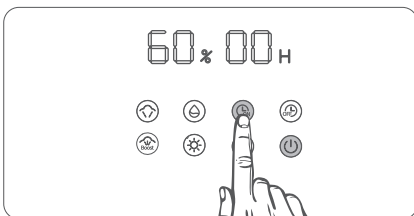
- 3 Press the **Night Light** button again to turn off the light at the bottom.



## TIMER ON

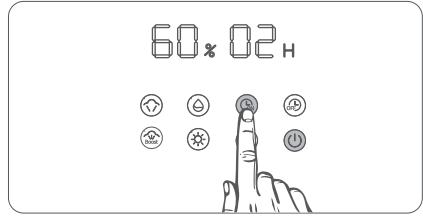
### Step 1:

When the power is standby, Press the **Timer ON** button to set the time level from 00H to 12H with an increase/decrease of 1H in each tap.



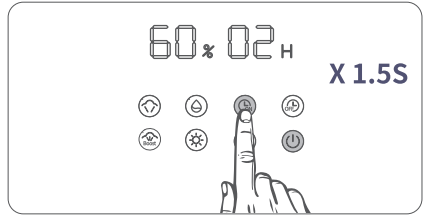
**Step 2:**

Press the **Timer ON** button for the 00H to disable the Timer function, and the Timer Indicators will be off.



**Step 3:**

Long press the **Timer ON** button for 1.5S to cancel the timer setting immediately.



**Tip:**

**Night Light** function can be used alone when the humidifier is not producing mist.

**TIMER OFF**

1 When the unit is on, Press the **Timer OFF** button to set the time level from 00H to 12H with an increase/ decrease of 1H in each tap.



2 Press the **Timer OFF** button for the 00H to disable the Timer function, and the Timer Indicators will be off.



3 After the **Timer** is up the humidifier will stop producing mist and the **Water Level Indicator** will be off.

**Tip:**

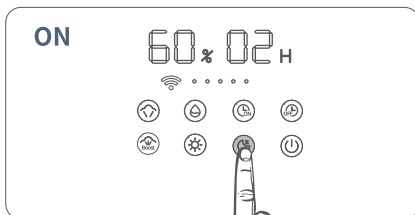
**Night Light** function is not affected by the **Timer**.

- 4 Long press the **Timer OFF** button for 1.5S to cancel the timer setting immediately.

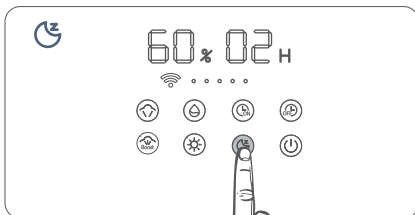


## SLEEP MODE

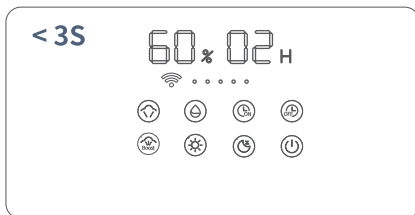
- 1 Press the **Sleep Mode** button to enable the **Sleep Mode**. All lights, including **Water Level Indicator**, **Low Water Indicator**, **Timer Indicator** and **Night Light** will be off, and the humidifier will continue to produce mist.



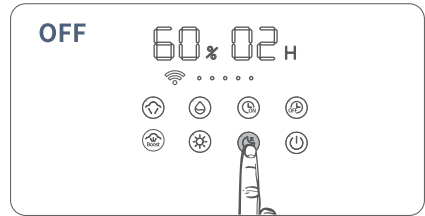
- 2 In the **Sleep Mode**, press any button or the **Power/Mist Control** to wake up the humidifier. The  icon will light up.



- 3 After waking it up, you can make some adjustment within 3S, such as setting a **Timer** or adjusting the **Night Light** brightness. After finishing the above settings for 1S, the humidifier will return to the **Sleep Mode**.



- 4 Press the **Sleep Mode** button again to exit the **Sleep Mode**, and the humidifier will return to the state before enabling the **Sleep Mode**.



**Tip:**

If there is no operation within 3S, the humidifier will return to the state before waking it up.

## MEMORY FUNCTION

- 1 If you turn off the humidifier without unplugging the adapter and then turn it on again, the mist intensity of the humidifier will be the same as before the humidifier was turned off.
- 2 If you turn off the **Night Light** without unplugging the adapter and then turn it on again the **Night Light** brightness will remain the same as before the light was turned off.

**Tip:**

The memory function does not apply to the **Timer** and **Sleep Mode** functions.

## LOW WATER PROTECTION

When there is not enough water in the **Water Reservoir**, the **Low Water Indicator** and the  icon will turn red.

The humidifier will stop producing mist to prevent it from overheating and damaging the **Atomizer**.