

YOEYOU

Silicone LED Face Mask

USER MANUAL

Have Questions About Your LED Light Therapy Mask?

Thank you for purchasing YOEYOU LED mask, please keep in mind that you can always contact us, we are always happy to help!

Enjoy hassle-free replacement: If your YOEYOU LED mask is defective or damaged, we will ship you a new one Totally free. For fast and knowledgeable service, please contact one of our customer service specialists today!

Contact YOEYOU through amazon for any assistance.

We are here to help:

1. Go to amazon's product list and select YOEYOU store.
2. Select the ask a question button.
3. Write and send your message. We will reply you within 24 hours.

About Business Inquiries and After-sales:

Email: support@yoeyou.com

YOEYOU VIP Service:

- 24-hour Online Support
- 90-day Money Back
- 3-year Long Warranty

Please activate VIP on <https://www.yoeyou.com>



Frequently Asked Questions (FAQs)

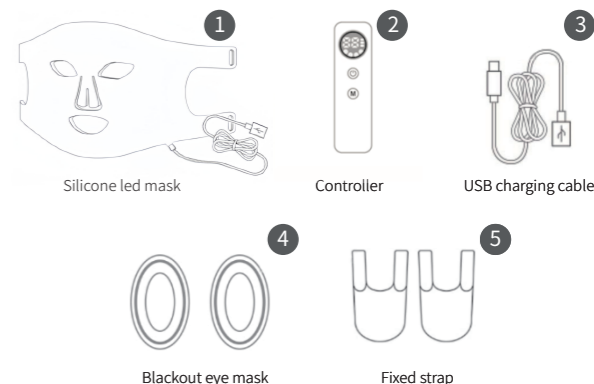
Problem	Solution
Q: How does YOEYOU LED face mask light therapy work?	A: Scientifically certified infrared light therapy 4 colors light waves fights the signs of aging and maintains your youthful vitality.
Q: How long does it take for light therapy mask to take effect?	A: The light therapy mask improves your skin every time you use it, with visible results within 4 weeks.
Q: How often should LED face masks be used?	A: For best results, we recommend using it 3 to 5 times a week for 15 to 20 minutes each time. The effect is visible within 4 weeks.
Q: How many modes does the light therapy mask have?	A: The light therapy for face is set up with Repair skin mode, Brighten skin mode, Anti wrinkle mode, and Oil control mode. You can choose your favorite light therapy mode.
Q: Are light therapy masks safe and skin-friendly?	A: The YOEYOU LED mask is safe and effective, made of food-grade silicone, non-irritating and anti-allergic, suitable for all skin types.
Q: Can I use the LED mask during charging?	A: Please fully charge the remote control when you use it for the first time, the LED mask cannot be used while charging.
Q: How do I take care of my skin after using the LED mask?	A: You can continue your daily skincare routine with moisturisers, serums etc. for better results.

Product Description

LED light therapy is a non-invasive and anti-aging procedure that emits packets of light deep into the skin's layers. It triggers cellular activity to allow the skin to be rejuvenated. LED light therapy does not destroy live tissue and is safe for all skin types and colors. LED light therapy does not heat up the skin and therefore poses no risk of burns or thermal damage.

When used as part of a smart skincare routine, LED light therapy can be the perfect foundation for a daily skincare routine. LED light therapy can be used 3-5 times a week for 15-20 minutes each in the same way as you would use a skincare mask.

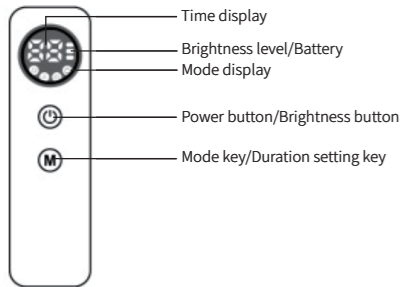
Product Specifications



Product Parameters

Rated voltage	3.7V	Charging voltage	5V
Rated power	3.2W	Charging current	560mA

Controller Operating Instructions



Time display: The time is displayed in countdown mode from the set duration. When the time is displayed as 0, the LED mask ends the job.

Brightness level/Battery: Display battery power 3 seconds before turning on (one light on means the battery power is 30%, two lights on indicates that the battery power is 60%, three lights on indicates that the battery power is 100%), and the brightness level is displayed after 3 seconds of power on. When the light flashes, it means the battery is low and needs to be charged.

Mode display: There are 4 modes.

Mode 1: Red light (the first indicator light is on);

Mode 2: Blue light (the second indicator light is on);

Mode 3: Red light +Infrared light (the third indicator light is on);

Mode 4: Blue light +Red light+Infrared light (the fourth indicator light is on);

Power button/Brightness button: Long press the power button to turn the LED mask on and off, and then press it briefly to adjust the brightness. There are 3 levels of brightness adjustment.

Mode key/Duration setting key: Short press the mode key to switch modes; long press to set the working time. Options include 5 minutes, 10 minutes, 15 minutes, and 20 minutes, with the default being 10 minutes upon powering on.

LED Light Therapy Treatments

1. Red mode: 660nm wavelength red LED light has the ability to reach down into the layers of the skin where it rejuvenates, stimulates collagen production, prompts cellular repair, and increases blood circulation promoting a more vibrant and youthful complexion. Red light is used to reduce fine lines and wrinkles and give the skin a more plumped, smooth, younger-looking appearance.

2. Blue mode: 460nm wavelength blue LED light has been proven to have powerful purifying properties that help with breakouts, clear the skin, and stabilize oil glands. It can kill bacteria and inhibit inflammation. It has the effect of removing acne, sterilising, repairing skin and leaving no scars.

3. Red+Infrared mode: 660-850nm wavelength penetrates deep into the skin, accelerates tissue metabolism and breaks down pigmentation. Restore skin elasticity and luster, reduce fine lines and improve skin dullness. Including tightening and toning the skin, reducing breakouts scars, erasing sun damage or dark spots, and reducing inflammation.

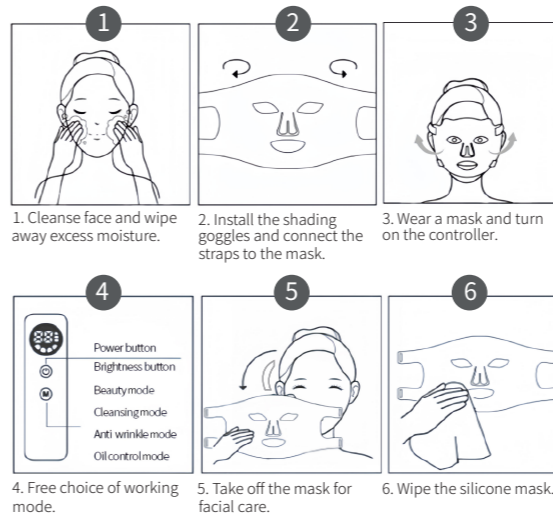
4. Blue+Red+Infrared mode: 460-660-850nm wavelength has the effect of neutralising, balancing and stabilising the skin, reducing oil secretion, balancing the ratio of water to oil, effectively soothing mental tension, unblocking lymph and draining oedema. It helps to lighten hyperpigmentation spots and make the skin look brighter.

Light Sensitivity Test

Before trying this product for the first time, please perform a light sensitivity test:

Step 1	<ul style="list-style-type: none"> Place the device on your arm, turn on the switch and illuminate for 10 minutes. If your skin is red or itchy, you may have photosensitive skin. It is recommended that you stop using it and contact us for after-sale service help.
Step 2	<ul style="list-style-type: none"> Before use, please clean your face and keep it dry (without makeup) to prevent cosmetics that may contain. Some light-sensitive ingredients may affect skin care efficacy.
Step 3	<ul style="list-style-type: none"> After use, the skin may become red. This is a normal reaction of the skin and will occur within 1-2 days. It will return to normal within an hour. If you feel burning or other discomfort during the process, please stop using it immediately.

Instructions For Use



Notice

- After use and care, use a soft towel or wet wipe to wipe the silicone part, please ventilate it to dry and then store it in a dust bag.
- Do not have direct contact with water.
- It is recommended to use 3-5 times a week, with a cycle of 4 consecutive weeks.
- When using it for the first time, please fully charge the device and do not use it during charging.

The following people should not use this product	<ol style="list-style-type: none"> People who are pregnant and lactating. People who are photosensitive or who are taking any drugs that may cause photosensitivity. People suffering from genetic eye diseases or skin diseases (such as lupus erythematosus, photosensitive eczema or albinism, etc.).
Charging instructions	<ol style="list-style-type: none"> This product contains a lithium-ion battery. This product does not support power-on operation when charging. When the brightness control indicator flashes, the device is in charging state. When all three brightness control indicators light up and stop flashing, charging is complete.

How To Use And Steps

Step 1	<ul style="list-style-type: none"> Clean face thoroughly.
Step 2	<ul style="list-style-type: none"> Connect the straps to the mask, place the mask on your face, adjust and buckle the straps to secure the mask. With the mask placed on the face, press and hold the controller button to turn on the device.
Step 3	<ul style="list-style-type: none"> This equipment sets four working modes according to different light energies, which can be adjusted as needed. Adjust the brightness of each mode. After powering on, the device defaults to low gear, and the gear can be adjusted by pressing the button. When the brightness level light flashes, the device is in a low power state and needs to be charged.
Step 4	<ul style="list-style-type: none"> The device will automatically turn off after the set time is over. After the device is turned off, take off the mask and end the irradiation. Just follow your daily skin care routine.
Step 5	<ul style="list-style-type: none"> Recommended 3-5 times a week, 4 consecutive weeks as a cycle.