

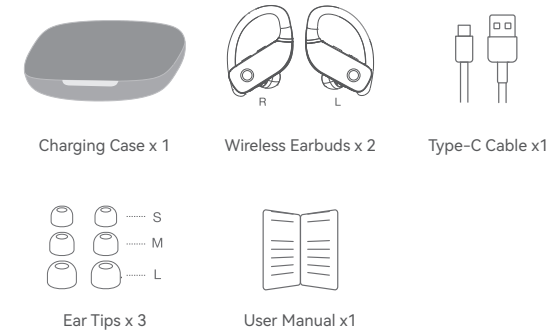
T16 User Manual  
True Wireless Sports Earbuds

V41 2025.01.09

### Customer Service

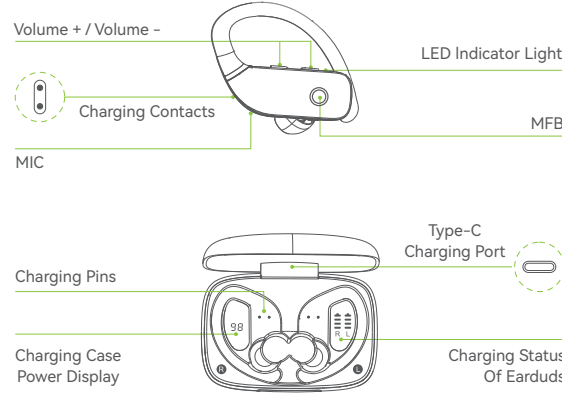
Tel: (781) 776-7816 Mon.-Fri.

### what's in the box?



**Note:** Please Remove Protective Films of The LED Power Display and Charging Contacts Before Using it.

### Overview

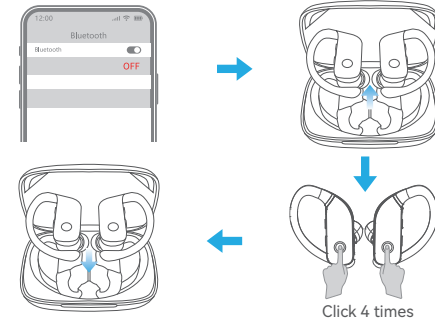


### Product Parameters

Product Name: TWS Earphone    FCC ID: 2AVF5-T17  
Model No.: T16                    IC: 29201-T16    HVIN: T16  
Input: 5V ~ 1A                    Battery Capacity: 3.7V 600mAh, 2.22Wh

### How to reset?

- Turn off the bluetooth of all devices (make sure the earbuds are turned on and not connected).
- Click the Multi-functional button of two earbuds for 4 times.

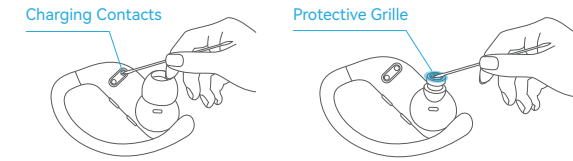


- Put the earbuds back into the charging case.
- Take out the earbuds from the charging case and they enter pairing mode (Pairing mode: one earbud will flash red and blue alternately, the other will slowly flash blue).
- Search for "T16" and tap to connect on your device.
- If the reset fails, please repeat the above steps.

**Tips:** The earbuds cannot be reset when they are powered off or connected.

### Maintenance

After a period of use, the charging metal contacts of the earbuds may be contaminated with sweat and dirt, resulting in the earbuds aren't able to power on, charge, or having connection issues, and the protective grille of both earbuds may accumulate earwax and dust, resulting in muffled volume. Please use the cleaning swab to remove dust or earwax from the charging contacts and the protective grille.



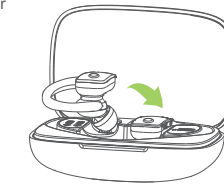
**Note:** If the earbuds have been unused for more than 3 months, we recommend that you charge them.

### How to pair the two headphones with my phone?

(Prior to first use - Please be sure both the Earbuds and the Charging Case are fully charged.)

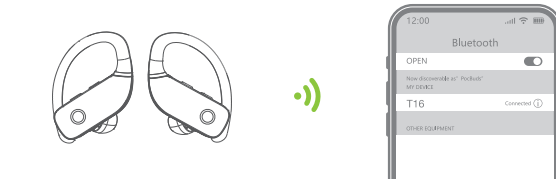
Step 1 - Take both headphones out of the charging case, the twin Earbuds will power on and pair with each other automatically.

[ If the earbuds are not connected to your device over 3 minutes, the earbuds will power off automatically. Turn on the headphones manually by pressing down the MFB about 3 seconds at the prompt "Power on" and one beep sound. ]



Step 2 - Activate Bluetooth setting on your phone, search and choose "T16" to connect.

[ There should be voice prompt "connected" if you wear the earbuds. ]  
Earbuds' indicator light off means already connect with mobile.



Automatically re-connection:

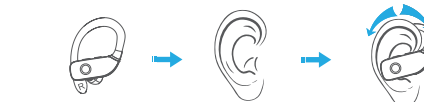
The last paired device will reconnect the earbuds by default after the first successful connection.

### Tips

- If there is any issue with pairing both earbuds to your phone, please put the earbuds back into the charging case and repeat the above steps.
- These earbuds not only can be used together, but also can be used individually. If you want to use single mode, just take one earbud out of the case and connect to your phone, it will be OK. Or when you are using with Dual mode, turn off one earbud manually or put one earbud back into the charging case, you will be able to hang on to the other one by single mode.

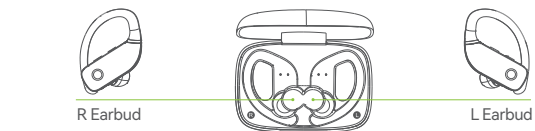
### How to wear the earbuds correctly?

Take out "Rearbud" to wear on right ear.



The ear hooks are adjustable, you can bend it to fit your ears tighter if in need.

### How to place headphones?



### Functions

#### For Call

Answer a call	Click Once
End a call	Click Once
Reject an incoming call	Quick Double-Click

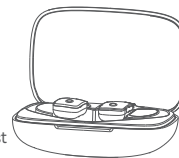
#### For Music

Play/Pause	Click Once
Previous Song	Quick-Double Click "L" MFB
Next Track	Quick-Double Click "R" MFB
Activate Siri	Quick-Triple Click
Volume Up	Press "+" Button
Volume Down	Press "-" Button
Power On	Long Press 3 Senconds
Power Off	Long Press 5 Senconds

### Charging

#### Earbuds Charging

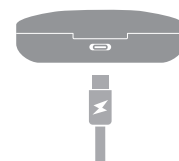
Earbuds start to charge only when you put the earbuds into the charging slot with right way. (You can charge the charging case and earbuds at the same time, or you can charge the charging case first then to charge the earbuds.)



- When being charged, Earbuds' LED light will illuminate red.
- When fully charged, the charging case will automatically stop charging and the earbuds' LED Red light will go off.

#### Charging Case Charging

There is a Type-C usb charging cable in the package, please use it to charge the case directly. During charging, the digital display will flashing and display battery in real time. After full charge, the number is displayed as 100.



#### Charging Warning

- After using a period of time, the earbuds don't charge or even can't turn on because of oxidized magnet connector. You can handle this problem by using alcohol rag to clean the magnet connector on earbuds and charging case.
- Earbuds can automatically turn off immediately, meanwhile start charging when you put back into charging case. Also will automatically turn on and pairing when pick it up.

### FAQ

**Q:** Why these earbuds can not pair with my mobile phones ?

- Please make sure the earbuds are full charged and power on.
- Please make sure the bluetooth of your phone is turn on.
- If above 2 points have no problem, please put earbuds into the case

again and close the case, hold on for 1min, then open the charging case and reconnect earbuds with your phone.

**Q:** Why does the music cut in or cut out.

**A:** First, please do not let the distance between these earbuds and your phone be more than 33 feet (without obstacle).

If the distance is less than 33 feet, please take steps as follow:

- Put earbuds back into case and close it, find "T16" in the Bluetooth list and click "Forget the device" on your phone.
- After 10s later, open the case and reconnect these earbuds with your phone.

**Q:** When being on a phone call, can I hear voice in both Earbuds?

**A:** Yes, you can hear the voice in both earbuds when both earbuds are paired and connected to the same mobile phone.

### Battery Warning

Using the wrong battery can cause fire and other hazards (for example, in the case of some lithium battery types)

- disposal of a battery into fire or a hot oven, or mechanically crushing or cutting of a battery, that can result in an explosion
- Do not leaving a battery in an extremely high temperature surrounding environment that can result in an explosion or the leakage of flammable liquid or gas
- a battery subjected to extremely low air pressure that may result in an explosion or the leakage of flammable liquid or gas.

### FCC Warning Statement

Any Changes or modifications not expressly approved by the party responsible for compliance could void the user's authority to operate the equipment.

This device complies with part 15 of the FCC Rules. Operation is subject to the following two conditions:

- This device may not cause harmful interference, and
- this device must accept any interference received, including interference that may cause undesired operation.

Note: This equipment has been tested and found to comply with the limits for a Class B digital device, pursuant to part 15 of the FCC Rules. These limits are designed to provide reasonable protection against harmful interference in a residential installation. This equipment generates, uses and can radiate radio frequency energy and, if not installed and used in accordance with the instructions, may cause harmful interference to radio communications.

However, there is no guarantee that interference will not occur in a particular installation. If this equipment does cause harmful interference to radio or television reception, which can be determined by turning the equipment off and on, the user is encouraged to try to correct the interference by one or more of the following measures:

- Reorient or relocate the receiving antenna.
- Increase the separation between the equipment and receiver.
- Connect the equipment into an outlet on a circuit different from that to which the receiver is connected.

— Consult the dealer or an experienced radio/TV technician for help.

This equipment complies with FCC radiation exposure limits set forth for an uncontrolled environment.

This transmitter must not be co-located or operating in conjunction with any other antenna or transmitter.

### ISED Warning

This device complies with Industry Canada licence-exempt RSS standard(s). Operation is subject to the following two conditions:

- this device may not cause interference, and
- this device must accept any interference, including interference that may cause undesired operation of the device.

Le présent appareil est conforme aux CNR d'Industrie Canada applicables aux appareils radio exempts de licence. L'exploitation est autorisée aux deux conditions suivantes:

- l'appareil ne doit pas produire de brouillage, et
- l'utilisateur de l'appareil doit accepter tout brouillage radioélectrique subi, même si le brouillage est susceptible d'en compromettre le fonctionnement.

The device is compliance with RF exposure guidelines, users can obtain Canadian information on RF exposure and compliance.

Le présent appareil est conforme

Après examen de ce matériel aux conformité ou aux limites d'intensité de champ RF, les utilisateurs peuvent sur l'exposition aux radiofréquences et la conformité and compliance d'acquérir les informations correspondantes.

### Caution

DISPOSE OF USED BATTERIES ACCORDING TO THE INSTRUCTIONS

The symbol indicates DC voltage

RECYCLING

This product bears the selective sorting symbol for Waste electrical and electronic equipment (WEEE).

This means that this product must be handled pursuant to European directive 2012/19/EU in order to be recycled or dismantled to minimize its impact on the environment. User has the choice to give his product to a competent recycling organization or to the retailer when he buys a new electrical or electronic equipment.

This product can be used across EU member states.

The device is low power device, it can meet the requirement of the RF exposure.

Notes:

- High Sound Pressure
- Hearing Damage Risk
- Do not listen at high volume levels for long periods.

### Important Safety Information

• Keep away from children and pets to prevent accidental ingestion as it has a battery. If swallowed, seek medical help. Store out of their reach when not in use.

• The ear caps are made of soft silica gel, and the ear hooks are made of elastic TPE material. A very small number of users may have allergic reactions. If symptoms like itching or swelling of the skin on or around the ears appear, stop wearing them immediately and seek medical treatment.

• Pollen, dust and cosmetic residues are easy to attach to the earbuds, which may easily lead to allergic situations. Please clean the earbuds before and after use and avoid exposure to highly allergenic environments.

• People with sensitive skin should test the earbuds on a small area of skin around the ears before using them. If any discomfort occurs, stop using them immediately and consult a dermatologist.

• To avoid hearing damage, do not use your earbuds at a high volume. Turn the volume down on your product before placing the earbuds in/on your ears, then turn the volume up gradually until you reach comfortable, moderate listening level.

• Long earbuds use may lead to ear fatigue, tinnitus and affect ear blood circulation. It's recommended to take a 5-10 minute break per hour of wearing to relax your ears and enjoy healthy listening.

CE RoHS Made in China