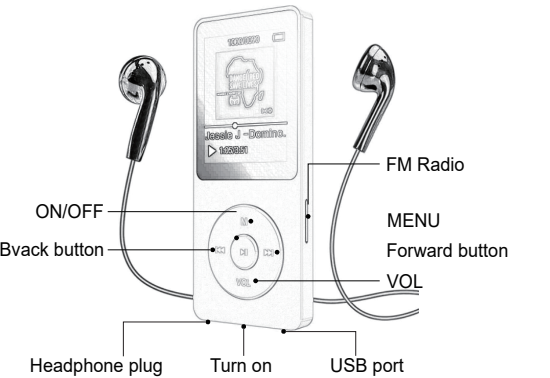


Operation Manual of MP3 Player



Dear User:

Thanks very much for your support to buy this MP3 player! This MP3 player is designed to provide a convenient method to let you enjoy music anywhere and anytime. Before using, please read the user manual carefully.

Safety Instructions:

In order to ensure that you can use this product safely, please read the following safety instructions and to operate it correctly; at the same time, please keep this manual carefully for later reference.

1. If the player enters a state of crash, press and hold the power button for 10 seconds to automatically restart.

2. Please do not disassemble and change the components and parts by yourself; if there is any damage in the product, please contact the professional maintenance personnel or specified maintenance center for maintenance.
3. Do not put the product in place where there is water or moist. Please keep the product dry.
4. Keep the product away from spatters of liquid and liquid.
5. Do not place the product near fire, such as candles or other bright flames.
6. When using the buttons, avoid excessive force resulting in damage to the product.
7. For cleaning products, use a dry soft cloth or a wet cloth that does not contain any corrosive solvents.
8. Do not use a high-power charger or a mobile power that with current of exceeding 2 amps to charge the player to avoid damage.

Button Instructions:

Power Button: Turn On/ Turn Off the player
M: Menu Button, Enter into menu interface
VOL: Return Button; Volume Button
<<: Left / Previous option; Previous track; Volume Down
>>: Right / Next option; Next track; Volume Up
>||: OK; Play/ Pause

Functions:

Music; Movie; Photo; Brows; Record; Radio; E-Book; Game; Setting.

Let's start the operation:

1. Turn on/ Turn Off the player.
Please toggle the power button to power on or power off the player.
When in sleep mode, please long press the >|| button to activate the player.

2. Music:

After select MUSIC, click >|| to enter into music interface. Press >|| to start playing music or stop playing. Press << to switch to previous track and >> to next track.

·While pausing music:

Press M button to enter into folder option, you can check your music list in the TF card or player and select specific song to play.

Delete file/Delete all: Delete your unwanted files. Press VOL to return to main interface.

·While playing music:

Press VOL to enter into Volume Adjustment Interface, press << and >> to turn down or turn up the volume. Press M to enter into menu option, you can adjust music options. Press << and >> to adjust options and press >|| to select. Press VOL to return to main music interface.

√Repeat - Adjust repeat modes of playing music

>Normal: Play music in list order

>Repeat One: Single loop play

>Folder: Play music in current folder, will stop playing if music list has finished in current folder

>Repeat folder: Repeat playing music in current folder

>Repeat all: Repeat playing all music

>Random: Randomly play music

>Intro: Play current music for only 10 seconds then stop

√Equalizer - Adjust the music effect

>Options: Natural, Rock, Pop, Classic, Soft, Jazz, DBB
√Variable Speed Playing - Adjust playing speed
>You can adjust the playing speed: 8x slowdown ~ 8x acceleration

√Replay Mode - Replay part or whole of one song

>Replay: Define the repeat position. When "A" is flashing in screen, press >> to define the start position, press >> again to define the end position, then it will play repeating parts. Press M to finish replaying.

>Replay times: Set repeating times from once to 10 times, press << or >> to adjust.

>Replay gap: Set repeating interval time from 1 second to max 10 seconds, press << or >> to adjust.

·How to display song lyrics?
When downloading songs, please download the lyrics at the same time, find the lyric files and then put the songs and lyrics into this MP3 player at the same time. Note the lyric name must be same as the song name (eg Song name: Love Story.mp3 and the corresponding name of lyric should be: Love Story.lrc)

3. Movie (Video)

After select MOVIE, press >|| to enter into video interface. Press >|| to start playing.

Long press the VOL button for 3 seconds then release it to enter into Volume Control Interface and press << or >> to change the volume (If you are playing video, please pause playing first then adjust the volume)

·While playing video
Press >|| or VOL button to stop playing and return to video main interface.

Shortly press << or >> to switch to last or next video.

Long press << to go backwards and long press >> to go forwards.

·While in video main interface (Not playing):
Press M to enter into video menu

√Card folder: you can check video files in the TF card or player and select specific video to play.

√Delete file/Delete all: Delete your unwanted files.

√Repeat - Adjust repeat modes of playing video. (Please reference to Repeat part in Music function)

It support AMV video format and video size 160*120. If your videos are not AMV format, please convert it first. We

Below is instruction for the AMV converter tool:

1. Copy the converter tool to your computer and decompress it;

2. Click SETUP.EXE to install the converter and find it in your computer menu(media player management tool 4.46)

3. Open the video converter tool, select the video that you want to convert at the input file location. In the video format position, adjust the video format size to 160*120 and press OK, then start converting the video.

4. Done. Find the converted videos in the output file location and copy to the MP3 player.

4. Photo:

After select PHOTO, press >|| to enter into picture interface. Press M button to enter into picture setting page.

√Card folder: you can check files in the TF card or player and select specific picture to view.

√Playback set: Switch pictures manually or automatically.

>If Manual play, please press << or >> button to switch pictures.

>If Auto play, set time gap from 2s to 10 seconds, it will play pictures automatically.

It supports: JPG and JPEG format and a resolution of 160 x128 size.

5. Brows

Enter into to check your files in the TF card or in the player. Press VOL button to return back.

6. Record

After enter into record function interface, press >|| to start voice recording, press >|| again to pause. You can press >|| again to keep recording (will be in same voice file). Press VOL button to finish recording and save voice files.

Press M button to enter into record menu.

√Card folder: All recording sounds are saved into a VOICE folder in RECORDER folder (You can play voice in Music function)

√REC type: Adjust the recording sound quality, 32KBPS, 64KBPS, 128KBPS, 256KBPS are optional. The better the sound quality, the larger the memory space occupied and the shorter the recording time.

7. Radio (Need to plug in earphones as antenna)

Press >|| to enter into Radio mode and listen to radio. Press << or >> to adjust the radio channel.

Shortly press VOL to enter in volume interface and press << or >> to adjust volume.

Long press VOL button to return back to main menu. Press M button to enter into radio menu:

√Save: Save current channel

>If Manual play, please press << or >> button to switch pictures.

>If Auto play, set time gap from 2s to 10 seconds, it will play pictures automatically.

It supports: JPG and JPEG format and a resolution of 160 x128 size.

5. Brows

Enter into to check your files in the TF card or in the player. Press VOL button to return back.

6. Record

After enter into record function interface, press >|| to start voice recording, press >|| again to pause. You can press >|| again to keep recording (will be in same voice file). Press VOL button to finish recording and save voice files.

Press M button to enter into record menu.

√Card folder: All recording sounds are saved into a VOICE folder in RECORDER folder (You can play voice in Music function)

√REC type: Adjust the recording sound quality, 32KBPS, 64KBPS, 128KBPS, 256KBPS are optional. The better the sound quality, the larger the memory space occupied and the shorter the recording time.

7. Radio (Need to plug in earphones as antenna)

Press >|| to enter into Radio mode and listen to radio. Press << or >> to adjust the radio channel.

Shortly press VOL to enter in volume interface and press << or >> to adjust volume.

Long press VOL button to return back to main menu. Press M button to enter into radio menu:

√Save: Save current channel

√Record: Enter into record interface and record current radio content.

√Delete/Delete all: Delete one or all saved channels

√Auto search: Automatically search available channels

√Normal band: 87.0 MHz ~ 108.0 MHz

√Japan band: 76.0MHz ~ 90.0 MHz

8. E-Book

Press >|| to enter into text list in the player or TF card.

·When in text list interface, press M button to open text setting menu.

√Card folder: You can check files in the TF card or player and select specific text to read

√Playback set: You can set reading modes

>If Manual play, you need to turn page manually. Press >> to next page and << to previous page.

>If Auto play, you can set time gap from 1 seconds to 10 seconds, it will turn pages automatically.

√Delete file/Delete all: Delete your unwanted texts

·When in text-reading interface, press M button to open Bookmark setting.

√Bookmark select: Select saved bookmarks

√Bookmark delete: Delete saved bookmarks

√Bookmark add: Add bookmark in current position
It supports TXT format.

9. Game

Press >|| to enter into Game interface (Boxman)

√System time: Press >|| to select Year, Month, Date, Hour, Minute, Second, press << to deduct number and press >> to add number. Press VOL to save and exit. After system time is adjusted, please long press >|| to sleep the player then long press >|| to activate the player again to save the adjustment forever. (If toggled the power button off directly, the time won't be saved successfully)

√LCD set:

>Brightness: Press << or >> to adjust the brightness between level 1 to level 15.

>Dark Mode: You can adjust the dark-screen time, the screen will turn black after 5-50 seconds to save battery if no operation. Level 0 is that the screen is always bright.

√Language: It supports 6 languages as: English, Germany, French, Italian, Spanish, Japanese

√Power off: Set sleep time or timing power off time

>Off time: (Power-saving mode) You can set auto-off time. It will turn off automatically after 10-120 seconds to save battery if no operation. Level 0 is that it keeps on and won't turn off automatically.

>Sleep time (Timing power-off mode): You can set timing power-off time. It will turn off automatically after 10-120 minutes to save battery. Level 0 is that it doesn't turn off automatically.

√Memory Info: Check the Disk space used and left.

√Firmware version: Check the firmware version of this device.

√Firmware upgrade: Doesn't support upgrade firmware by yourself.

10. Setting

Press >|| to enter into Game interface (Boxman)

√Start Game: Start game from the level you exited last time

√Select map: Select map from 1 to 17 to start (max level 17)

When in gaming interface, press M to go up, press VOL to go down, press << to go to left, press >> to go to right.

11. How to Transmit Data

<1> Computer Transmission
Firstly please download files into your computer first.
a. Connect this device with your computer via the data cable, make sure your computer find this player disk;
b. Copy and paste or drag songs/videos/texts to this MP3 player.

<2> OTG Transmission (Through mobile phone directly)
Firstly please ensure your phone supports OTG function(OTG=On-The-Go, it's used for data transmission between mobile devices)
You need to have an OTG adapter. Start: Connect this mp3 player with OTG adapter via a data cable, at the same time, connect your phone with the OTG adapter via a data cable. Find and select needed files in mobile phones, copy and paste into the mobile disk. Currently Apple devices don't support OTG technology

Technical Parameters:
Device Model: S05
Built-in Polymer Battery Voltage: 3.7V
Battery Capacity: 300mAh
Supported Headphones: 3.5MM jack
Supported audio formats: MP3, APE, FLAC, WMA, WAV
Supported video format: AMV (NOT support MP4 format)
Supported text format: TXT
Support photo format: JPG, JPEG

After-Sales Service:
We welcome you to send your suggestion to us via:
1. Email Address: amazon@wodgreat.com
2. Visit official Website: www.wodgreat.com