

Realtek Bluetooth USB Adapter

USER GUIDE

If any, please feel free to contact us anytime
with your Amazon Order#!

MailBox: amzvip2020@hotmail.com



Important TIPS

- Before you start using this adapter, disable all existing Bluetooth devices (Both Built-in and third party) from the PC "Device Manager" on Windows. Refer this as Guide "[3.1.1 Disable All Existing Bluetooth Devices](#)".

Contents

1. About This Guide-----	01
2. About Realtek Bluetooth Adapter-----	01
3. How to Use the Adapter-----	03
3.1 Connect to a Computer-----	03
3.1.1 Disable All Existing Bluetooth Devices-----	03
3.1.2 Plug the Adapter into a USB Port On Your PC Directly--	04
3.2 Install Realtek Bluetooth Driver-----	05
3.3 Pair with Your Bluetooth Devices-----	10
3.3.1 For Windows 7-----	10
3.3.2 For Windows 8.1-----	12
3.3.3 For Windows 10/11-----	12
3.4 Uninstall Bluetooth Adapter' s Driver-----	15
4. Troubleshooting-----	15
5. Warranty-----	19
6. Statement-----	20
7. Contact US-----	21

1. About This Guide

This guide provides the product overview and detailed instructions for each step.

When using this guide, please notice that features available of the adapter may vary by PC/Computer/Laptop model and software version.

The adapter's availability may also vary by region or ISP. All images, steps, and descriptions in this guide are only examples and may not reflect your actual experience

2. About Realtek Bluetooth

Adapter

※If you purchase Bluetooth 5.3 Version, the Device Name on PC is Realtek Bluetooth 5.3 Adapter;

If you purchase Bluetooth 5.4 Version, the Device Name is Realtek Bluetooth 5.4 Adapter.

Bluetooth 5.4 will be more stable, less power, better compatibility.

※Plug & Play and No driver installation required in Win 11/10/8.1 system to enjoy a wireless communication with

Bluetooth-enabled devices.

※Download and install driver software to compatible with Win7 system.

※Supports Dual Mode (BR/EDR + Low Energy Controllers). Backward Compatible with Bluetooth 5.2/5.0/4.2LE/4.0/2.1+EDR devices.

For BR/EDR, it allows multiple active links in either slave mode or master mode.

※BLE Technology-Bluetooth Low Energy technology for energy-saving wireless connectivity.

Realtek Bluetooth USB Adapter Spec:

Device Name	Realtek Bluetooth 5.3 or 5.4 Adapter
Bluetooth Version	Latest Bluetooth 5.3 or 5.4; Dual Mode
Bluetooth Chipset	Advanced Realtek chip
Bluetooth Profile	A2DP/HSP/HFP/AVERCP/BLE/HID/PAN /GAVDP/DID/IOPT
Host Interface	USB2.0, Compatible with USB3.0
Frequency Band	2.402-2.480GHz
Supply Voltage	DC5V(MAX5.75V)

Bluetooth Range	With Built-In Antenna, Class-II RF up to 20m in open area; With External 5dBi Antenna, Class-I RF up to 150m in open area.
OS Supports	Windows 7/win8.1/win10/win11(Not work with Mac OS/iOS; Linux; Car Systems; Xbox and TVs)

3. How to Use the Bluetooth Adapter

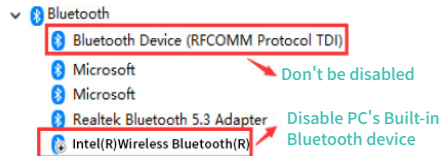
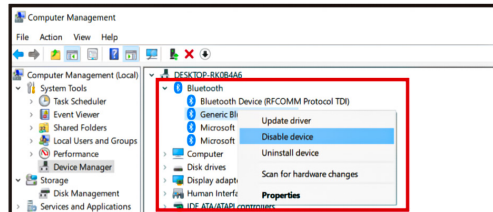
3.1 Connect to a Computer

3.1.1 Disable All Existing Bluetooth Devices

Before you start using this adapter, disable all existing Bluetooth devices (Both Built-in and third party) from the PC "Device Manager" on Windows.

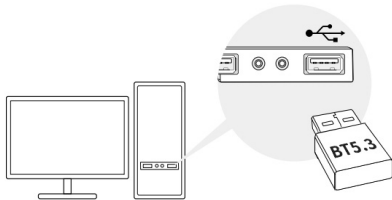
TIPS:

To go to "Device Manager": Right-click "This PC" or "My Computer", select "Manage", go to "Device Manager" and disable all existing Bluetooth devices.



Note: Common Bluetooth device name may be Generic Bluetooth radio OR Intel(R)Wireless Bluetooth(R),please disable it.

3.1.2 Plug the Bluetooth Adapter into USB Port On Your PC Directly



* The image is for demonstration only.

3.2 Install Realtek Bluetooth Driver

TIPS:

※For Windows 11/10/8.1 system:

1. you don't need download and install the Bluetooth driver and you can use the adapter as the next Guide "5. Pair with Bluetooth devices".
2. But if any issue, you also download and install the driver manually.
3. Or check if the automatic update of Windows system is enabled.
 - 1) Go into computer "Settings".

2) Click on "Update & Security".

3)Click "Resume Update" and then plug the Bluetooth adapter again.

※For Windows 7 system:

Please download and install the Bluetooth driver as the next steps.

TIPS:

The below websites are absolutely safe and reliable, please download the driver with confidence.

1. If you purchase Bluetooth 5.4 Version:

- 1)Please Download the driver from the website <https://bit.ly/3R7oyaC> get the zip file<RTL5.4 USB Adapter Driver> about 82.5M.
- 2)Extract the download zip file < RTL5.4 USB Adapter Driver > and run the "Setup.exe" and then start driver installation.

(Please note to must extract the file to install it correctly)

2. If you purchase Bluetooth 5.3 Version:

- 1)Download the driver from the website <https://bit.ly/3R7oyaC>

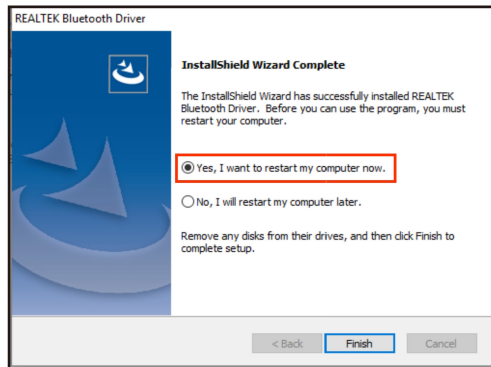
[ly/4bEHqGb](https://bit.ly/4bEHqGb) get the zip file <Rtl5.3 Driver> about 73.8M or <https://bit.ly/4aQ1kwl> get the zip file <Bluetooth USB Adapter> about 211M.

2) **Extract** the download zip file <Rtl5.3 Driver> and run the “Setup.exe” or **Extract** <Bluetooth USB Adapter> to choose <Bluetooth 5.3 Driver> to run “Setup.exe” , and then start driver installation.

(Please note to must extract the file to install it correctly)

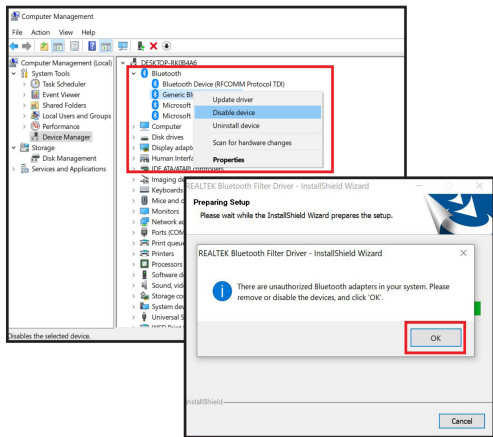
3. Follow the instruction to complete installation.

4. Once the process is finished, restart your computer.



TIPS:

1. If you have not disabled all existing Bluetooth devices (Both Built-in and third party) and you will get the warm tips as the below photo to remove or disable all existing Bluetooth devices.



2. <Realtek Bluetooth 5.4 Adapter> or <Realtek Bluetooth 5.3 Adapter> will be listed in the "Device Manager" when the driver is installed correctly.
3. If the driver installation fails, disable the antivirus software and firewall, then try again

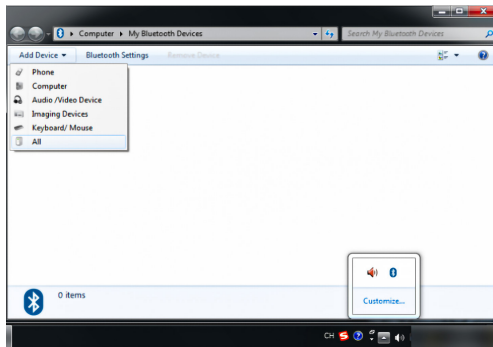
3.3 Pair with Your Bluetooth Devices

TIPS:

1. Before doing the pairing job, please turn off the Bluetooth function of your other device, such as your cellphone to avoid your Bluetooth device such as Bluetooth headset wrong reconnection and it can't enter into pairing status.
2. Please turn on your Bluetooth device and make sure that it can be kept in pairing status and can be discoverable.

3.3.1 For Windows 7

1. Open "Start" Menu to access "Device and Printers".
2. Select "Add Device" to choose the device that you want to pair with your computer.



3. Select the found-out device from the list and click "Next".

#NOTE: Make sure your Bluetooth device is turned on to be discoverable.

4. Click "Finish" when completing the pairing.

#NOTE: 1. Make sure your Bluetooth device is turned on to be discoverable.

2. During the pairing, you may be prompted to enter the

pairing code. You need to enter the identical code to both devices.

3.3.2 For Windows 8.1

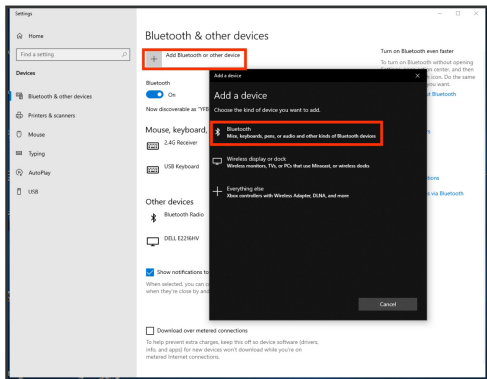
1. Open "Start" menu, type "Bluetooth" to access Bluetooth Settings.

2. Toggle on "Bluetooth".

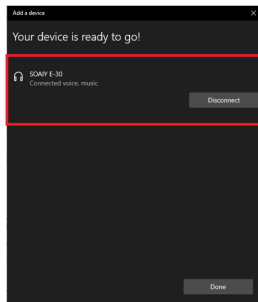
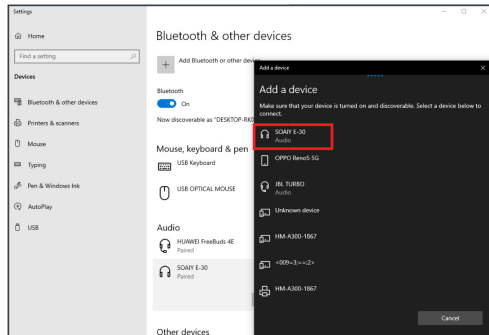
3. Select your Bluetooth device and follow the on screen instructions to complete pairing.

3.3.3 For Windows 10/11

1. Open "Start" menu, type "Bluetooth" to access Bluetooth Settings or Double-click the Bluetooth [Bluetooth icon] on status bar of the computer, click icon [Bluetooth icon] , then click "Bluetooth" to enter into the "Bluetooth Devices List" as the below photo.



2. Select your Bluetooth device from the list and follow the instructions on screen to complete pairing.



- #NOTE:** 1. Make sure your Bluetooth device is turned on to be discoverable.
2. If the Bluetooth icon doesn't appear, refer to Troubleshooting->QA1
3. During the pairing, you may be prompted to enter the pairing code. You need to enter the identical code to both devices.

3.4 Uninstall Bluetooth Adapter's Driver

You can remove the driver from Windows "Device Manager":

- 1.Go to Windows "Device Manager" find the adapter "Realtek Bluetooth 5.3 Adapter" or "Realtek Bluetooth 5.4 Adapter".
- 2.Right-click the adapter and select "Uninstall".
- 3.Follow the instructions to complete the uninstall.

4. Troubleshooting

Q1: What should I do if the Bluetooth icon doesn't appear?

- A1: 1. Make sure you have turned on the Bluetooth in Windows Setting.
2. If there are other Bluetooth devices on the computer, disable them in Device Manager, then insert the adapter and try again.

Q2: Why the adapter is not working with my Bluetooth device?

- A2: 1. Make sure your device has Bluetooth function.
2. Make sure you have installed Bluetooth driver on the computer.
3. For devices with non-standard Bluetooth protocols, such as Logitech Mouse, there may be some compatibility issue and can't be solved.

Q3: If the Bluetooth connection or reconnection failed, please do the steps:

- A3: 1. Please keep the Bluetooth range is within 20m or closer.
2. Please keep your Bluetooth headset is in pairing status and add Bluetooth device on the Bluetooth list of your PC.
- (Please turn off the Bluetooth function of your other

devices, such as your cellphone to avoid Bluetooth headset wrong reconnection and can't enter into pairing status.)

3. Please delete the Bluetooth devices from the Bluetooth list and restart your Bluetooth device and try again.

4. If still, please turn off the Bluetooth function of your PC or power off your PC and then restart again.

Q4: Can the adapter support more than one device at a time?

A4: Yes and the Bluetooth adapter can support up to 7 devices at a time. However, it can only connect to one BLE device at a time.

Q5: What operating systems are compatible with the adapter?

A5: Currently supported OS including Windows 11/10/8.1, Driver is required for Windows 7.

Please note that adapter is not compatible with Apple Mac OS/iOS, Linux, TVs or others.

Q6: The adapter can be compatible with PS/XBOX/Nintendo Switch/Pro Game set?

A6: No, it can't be used directly on PS3, PS4, PS5,

Switch, or Xbox Console; but it works with Game Controllers.

Q7: How do I connect to PS4/PS5/Xbox-one controller?

A7: You can try two things:

1)Unpair the controller from your PlayStation.

2)Hook the controller to your computer via the USB cable and then hit the PS button. Once the controller is detected you can disconnect the USB charging cable.

3)Game controllers may require specific drivers for different games / platform to configure button settings.

4)NOT compatible with Nintendo-controllers.

Q8: How far actually the Bluetooth adapter transmission distance is?

A8: Bluetooth USB Adapter with built-in antenna Class-II RF design and the one-way transmission range in open areas can reach up to 66ft/20m in open area.

The other modes with external 5dBi antenna can reach up to 492ft/150m long range in open area.

#NOTES: Bluetooth range can be affected by physical obstructions (walls, people, etc.), wireless interference (Wi-Fi routers, Wireless TV adapters etc.) also depends on

your paired devices.

Q9: Can the same Bluetooth adapter be paired and connected by each other?

A9: Yes and the Bluetooth adapter can be connected and work well by each other.

5. Warranty

This Product is covered by us Product and Labor warranty for 12 months from the date of its original purchase. If manufacturing defects occur, please contact our support team immediately to launch a warranty claim. We will instruct you on how to return the defective unit back to us for repair or replacement. The following are excluded from our warranty cover:

- 1) Device purchased as 2nd hand, used, or from unauthorized sellers.
- 2) Damage resulted from misuse and abusive action.
- 3) Damage resulted from Chemical, fire, radioactive

substance, poison, or liquid.

4) Damage resulted from natural disaster.

5) Damage caused to any 3rd party, person, object, and beyond.

6. Statement

We can only provide after sale services from products that are sold by us. If you have purchased this unit from a different place, please contact the seller for return and warranty issues

7. Contact US

Email: amzvip2020@hotmail.com

If you need any further assistance, please contact our customer support team and tell us your order number # at any time and we will reply you within 24 hours.