

SIFELY



## SIFELY X SMART LOCK

### Installation Guide

ENGLISH

### Installation Video

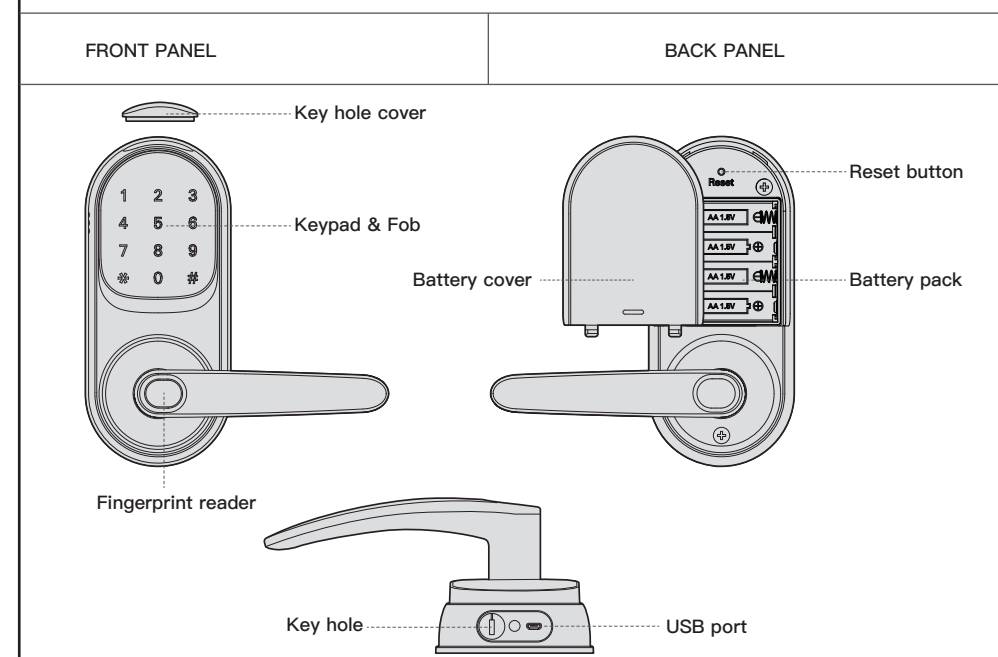


go to <https://www.sifely.com/tutorials> to watch short installation video.

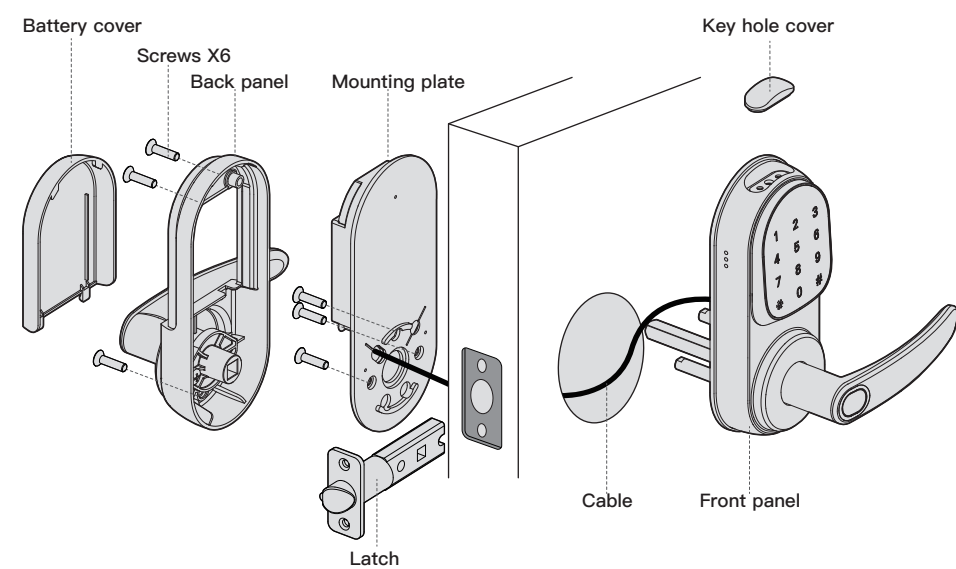
### PCAKING LIST

Latch and strike	Exterior Assembly	Interior Assembly	Screws
<p>Phillips headscrew driver Note: no electric drill</p>			

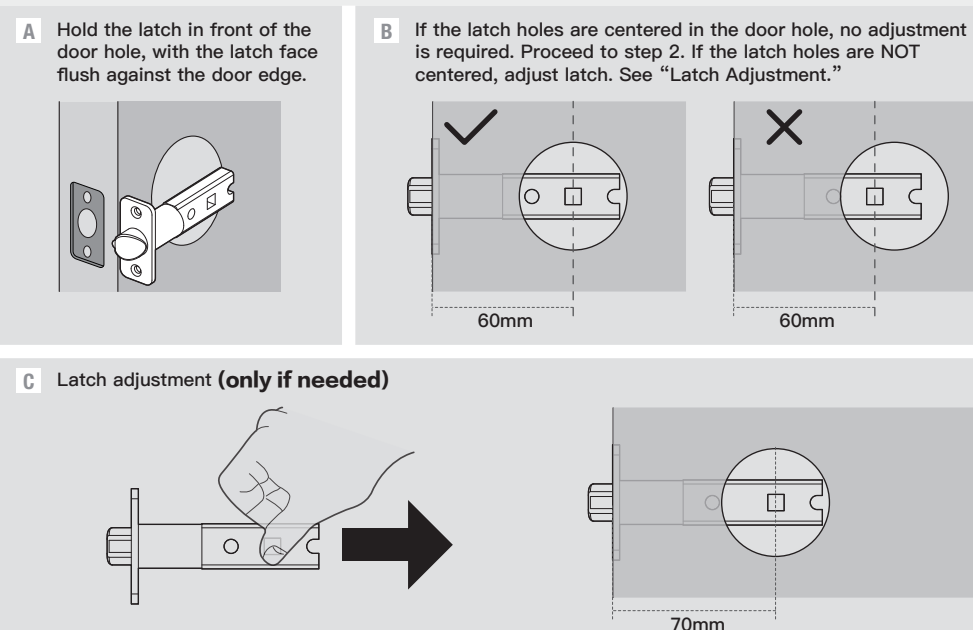
### PRODUCT OVERVIEW



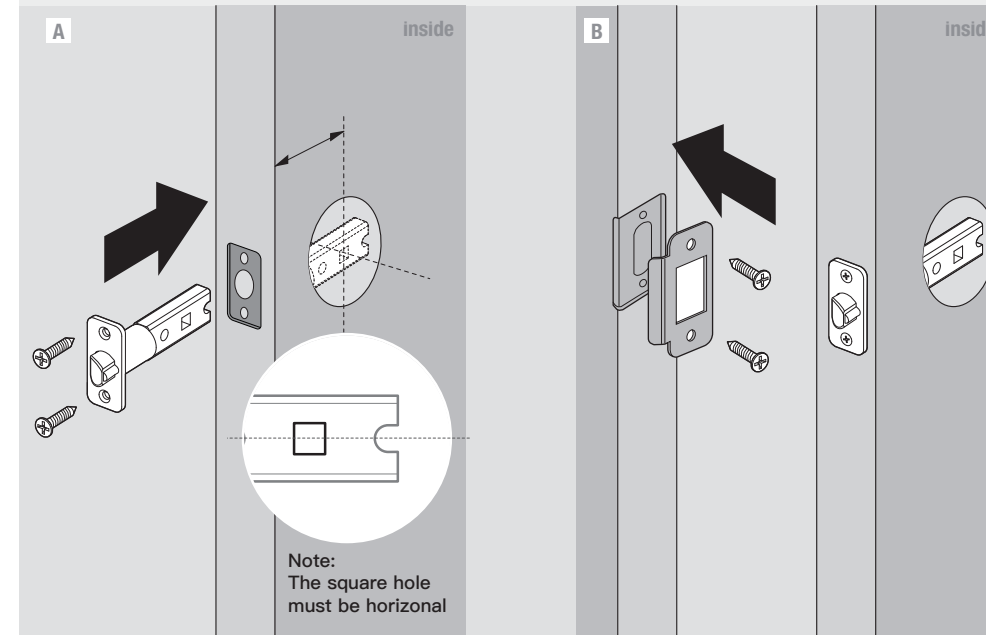
### EXPLOSIVE VIEW



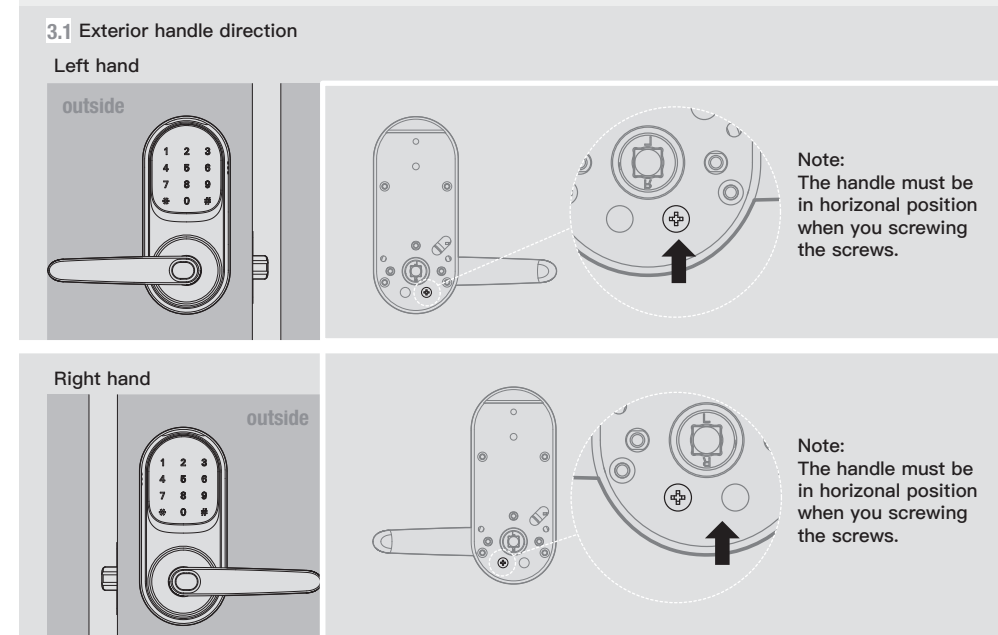
### 1 Adjust the backset of latch (if needed)



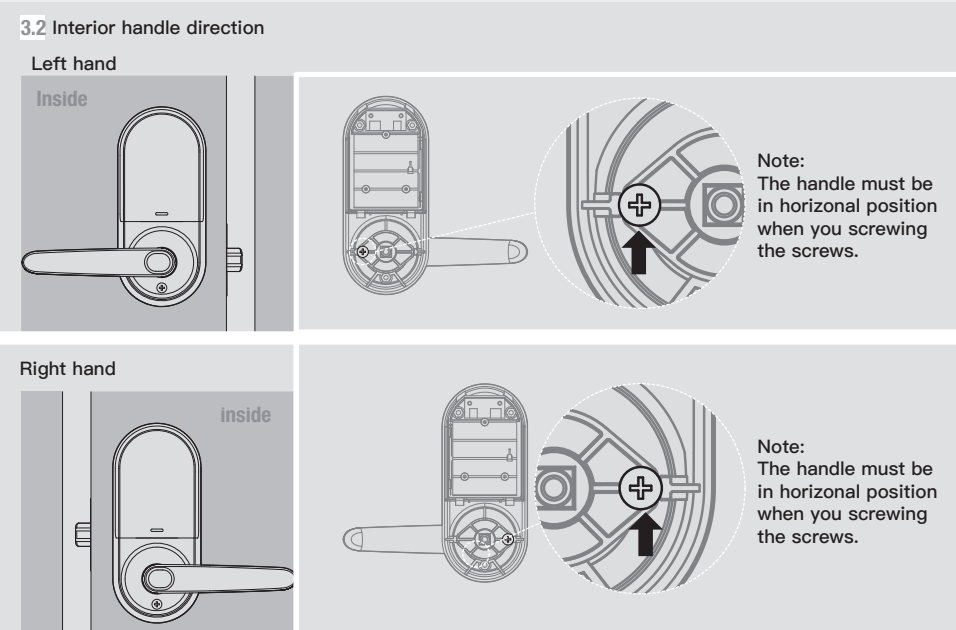
### 2 Install latch



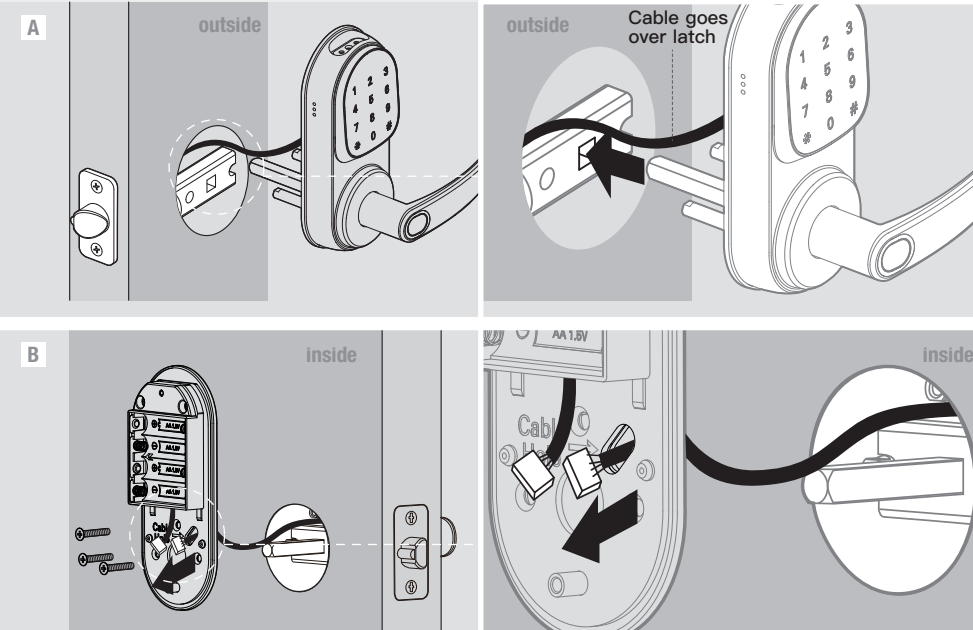
### 3 Preparing lock handle direction for both interior & exterior lock



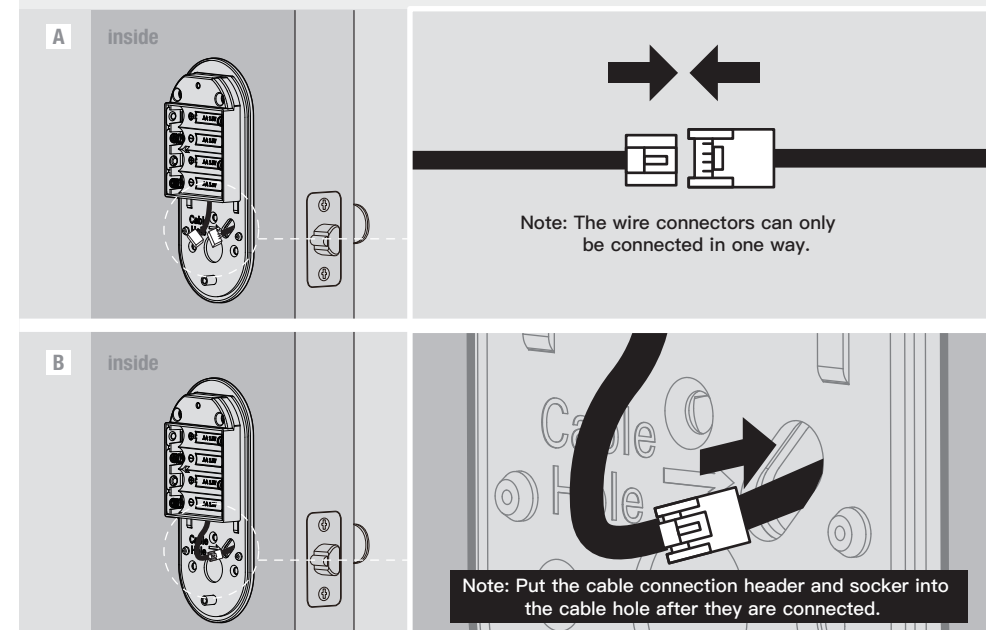
### 3 Preparing lock handle direction for both interior & exterior lock



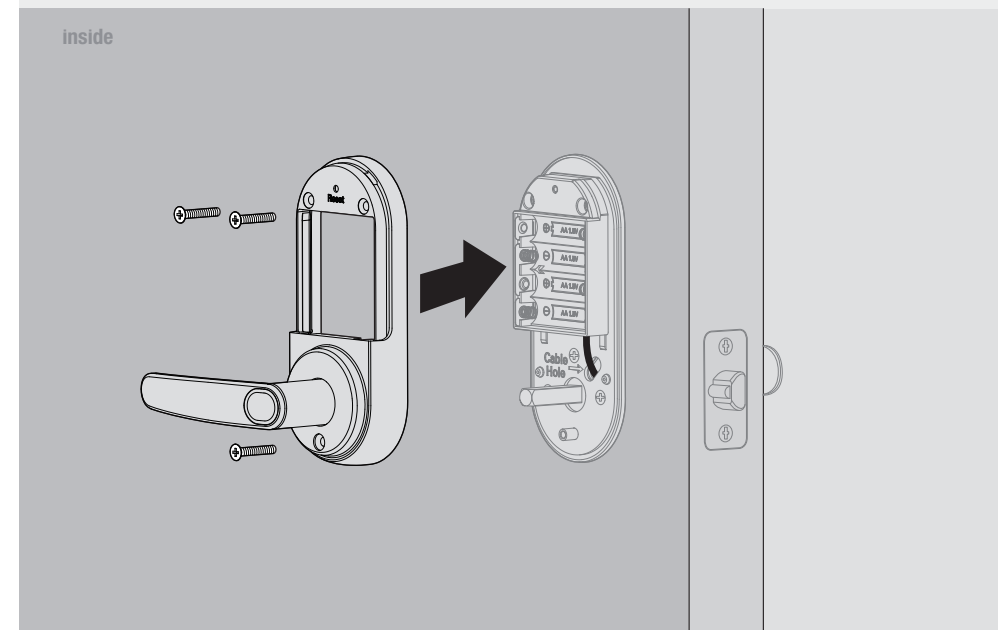
### 4 Install front panel mounting



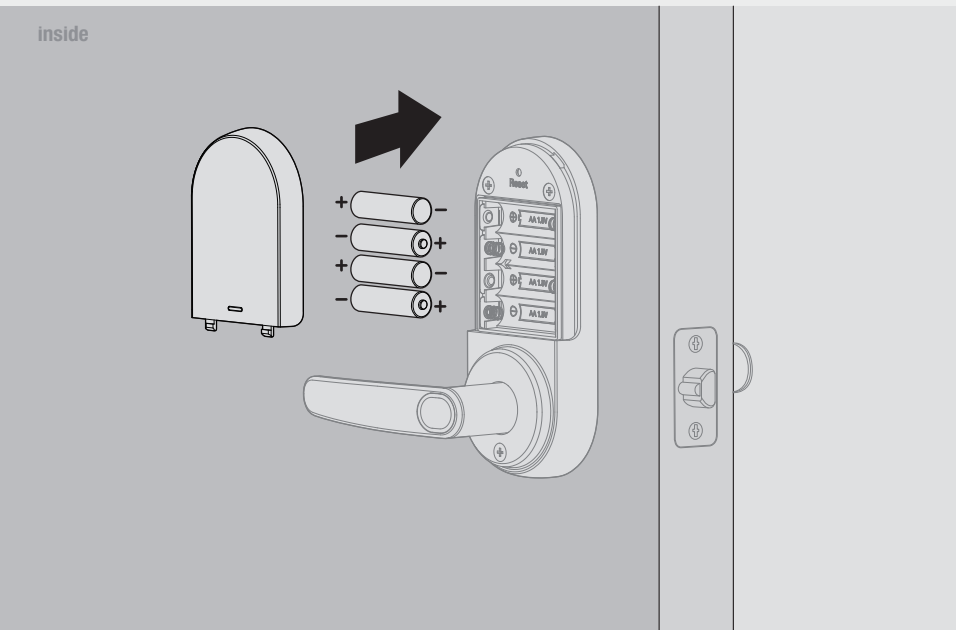
### 5 Organize the cable



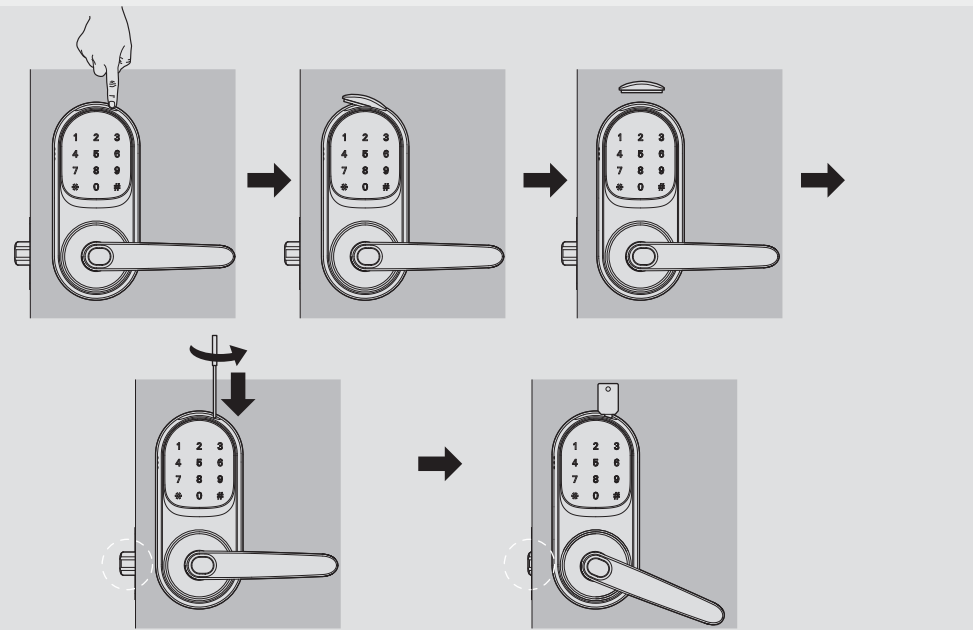
### 6 Install interior assembly



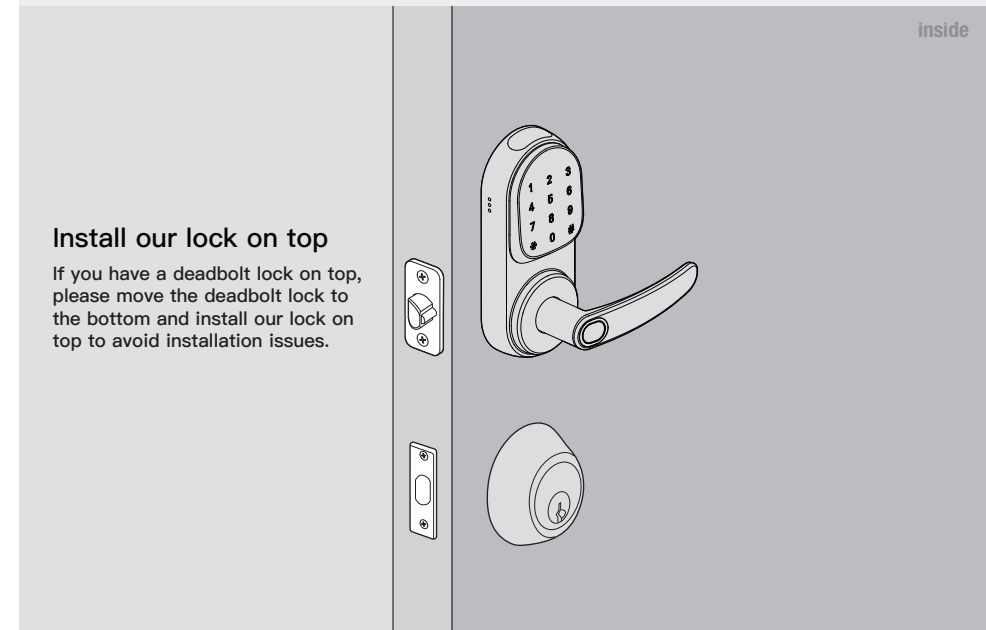
### 7 Install batteries and battery cover



### 8 Insert the key and test the installation



### Install our lock on top



### FCC Notices

This equipment has been tested and found to comply with the limits for a Class B digital device, pursuant to part 15 of the FCC Rules. These limits are designed to provide reasonable protection against harmful interference in a residential installation. This equipment generates, uses and can radiate radio frequency energy and, if not installed and used in accordance with the instructions, may cause harmful interference to radio communications. However, there is no guarantee that interference will not occur in a particular installation. If this equipment does cause harmful interference to radio or television reception, which can be determined by turning the equipment off and on, the user is encouraged to try to correct the interference by one or more of the following measures:

- Reorient or relocate the receiving antenna.
- Increase the separation between the equipment and receiver.
- Connect the equipment into an outlet on a circuit different from that to which the receiver is connected.
- Consult the dealer or an experienced radio/TV technician for help.

**Warning:** Changes or modifications to this device, not expressly approved by LIFEFUN LLC, could void the user's authority to operate the equipment.

### Email us first ! We are here to help.

For any technical questions or support, please email us at [cs@sifely.com](mailto:cs@sifely.com) for Sifely Technical Services.

Support is available:  
MON-SUN - 9 AM to 5 PM PST  
[www.sifely.com](http://www.sifely.com)