



Model No.  
P4-5S



# Wireless Controller FOR PS4

Quick Start Guide

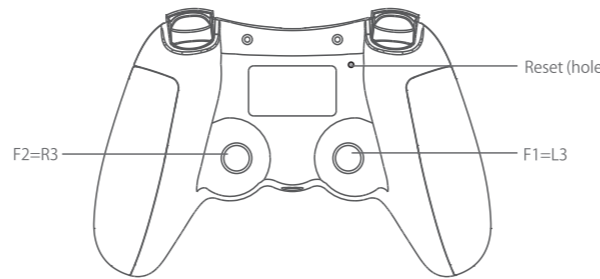
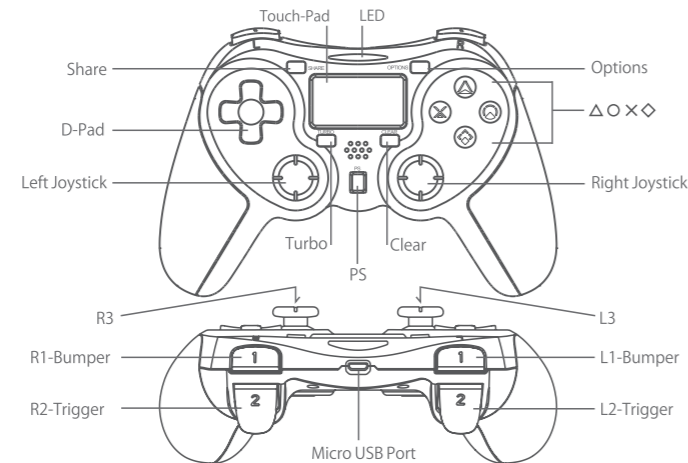
## Product Description

The premium TERIOS gaming controller is a must-have for real players. With built-in speakers that enhance the gaming experience and a multifunctional touchpad that allows you to simplify difficult controls. The ergonomic design perfectly with soft grip and trigger buttons provide pinpoint accuracy and comfort. The TERIOS controller is your physical connection to a new era of gaming.

## Product Parameters

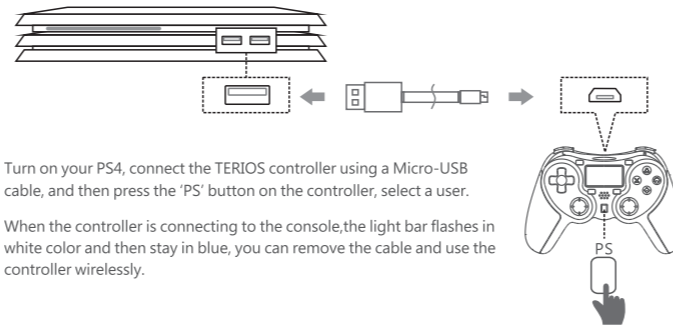
Materials: ABS	Connection: Bluetooth 4.2
Size : 160*110*65mm	Working Distance: Approx 26.24ft
Weight: 228.2g	Charging Voltage: 3.7V - 5.2V
Battery: Li-ion 800mAh 3.7v	Voltage: DC 3.5-4.5 V
Charging Time: 2-3 hours	Working Current: 0~60 mA
Usage Time: 12-14 HOURS	Vibration Current: 60~100 mA
Standby Time: 30 DAYS	Working Platform: PS4/PS4 Pro/PS4 Slim/PC (USB wired connection supports PC.)

## Overview



## How to Connect?

### • Pair my TERIOS Wireless Controller



Turn on your PS4, connect the TERIOS controller using a Micro-USB cable, and then press the 'PS' button on the controller, select a user.

When the controller is connecting to the console, the light bar flashes in white color and then stay in blue, you can remove the cable and use the controller wirelessly.

### • How to Re-connect my controller?

Press the 'PS' button to turn on your controller, it will reconnect to PS4 system automatically.

## How to Charge?

The controller battery charges when you connect the controller to your PS4 system with a USB cable. The system must be turned on or in rest mode. The charge level of the battery appears on-screen when you press and hold the PS button. While the system is in rest mode, the light bar slowly blinks orange. When charging is complete, the light bar turns off.

It takes approximately 2 hours to charge the controller when the battery has no remaining charges.



## How to Turn on/Turn off My TERIOS Controller?

Status	Description
Power On	Press the PS button to turn on the controller.
Power Off	1. To turn off the controller, press the PS button until the lightbar turned off, or log out of the PS4 system.
	2. When the controller is in re-connecting status, it will be turned off if it failed to connect over 60 seconds.
	3. When the controller is connecting, set the controller to turn off via the system in 10 minutes/30 minutes/60 minutes or stay on all the time.

## How to Use Turbo?

To activate the turbo hold turbo and press the button you want to assign it to, then let go of turbo, now when you hold the button it will act as if you were repeatedly pressing the button. Generally, a turbo button will switch a button on and off really quickly.

Like if you assign turbo to A, it'd have the effect of pressing the button really quickly if you just hold it down. The Clear button stops all turbo setting.

The turbo function is available for the fire buttons (△, ○, ×, ◇, L1, L2, R1, R2)

## Vibration Setting

If your controller is not vibrating as expected, the controller's vibration function may be turned off. To turn it back on:

Go to Settings > Devices > Controllers > Enable Vibration.

## Audio Setting

If you have headphones plugged into the 3.5mm headphone jack on the controller and you hear no audio, or the audio from the headphones is very faint, make sure the headphone plug is pushed all the way in. Unplug and then firmly reinsert the headphones.

To route all audio output to headphones:

1. Go to Settings > Devices > Audio Devices.
2. Select Output to Headphones > All Audio.

Highlight the Volume Control (Headphones) option and press Right on the 'D-pad' to make sure the controller's volume is turned up.

If output to Headphones is greyed out, that means the headphones are not detected by the controller.

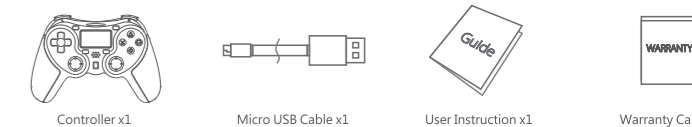
## How to Reset

If your controller won't pair, won't respond, or is displaying a flashing light, please follow the instructions on how to reset the controller.

1. Turn off and unplug your Console.
2. Locate the small reset button on the back of the controller near the shoulder button.
3. Use a small, unfolded paper-clip or small tools to push the button (the button is inside a tiny hole). Hold the button down for a few seconds and release.
4. This will prompt the controller to resync.



## Package Includes



Warranty: 12 months warranty for a risk-free purchase plus Lifetime Technical Support.

## Upgrade

We promise to provide sustainable upgrade service for our products.

If your purchased product can not pair the newest version of the consoles, Please visit our 'Help Center' or contact us directly, we'll walk you through how to upgrade it. Get help: [www.teriosgaming.com/pages/support](http://www.teriosgaming.com/pages/support)

## Precautions

### NOTICE: Please Read the Precautions Carefully

- ⊗ DO NOT use this product near fire sources;
- ⊗ DO NOT place the product in a humid or dusty environment;
- ⊗ DO NOT expose to direct sunlight or high temperature;
- ⊗ DO NOT use chemicals such as gasoline or thinner;
- ⊗ DO NOT hit the product or make it fall due to strong impact;
- ⊗ DO NOT bend or pull the cable parts strongly;
- ⊗ DO NOT disassemble, repair or modify.

\* The image on the packaging may differ from the actual product.  
 \* The manufacturer reserves the right to change the product design or specifications without notice.  
 \* PS4 is registered trademark of Sony Interactive Entertainment LLC. All rights reserved. All other trademarks are property of their respective owners. This product is sold by a 3rd party and not distributed under official license form or approved, sponsored or endorsed by Sony Interactive Entertainment LLC. This product is not manufactured for Sony Interactive Entertainment LLC.

Having problem? SCAN for Help!

Visit us: [www.teriosgaming.com](http://www.teriosgaming.com)

Like us on Facebook: @teriosofficial

support@teriosgaming.com

