

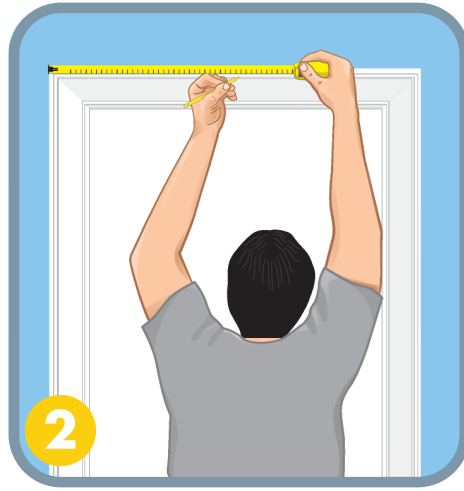


Magnetic Screen Door Installation Guide



1

Wipe door frame with a damp cloth to remove any dust or residue. Allow door frame to dry.



2

Measure center of the door frame. Mark with a pencil.



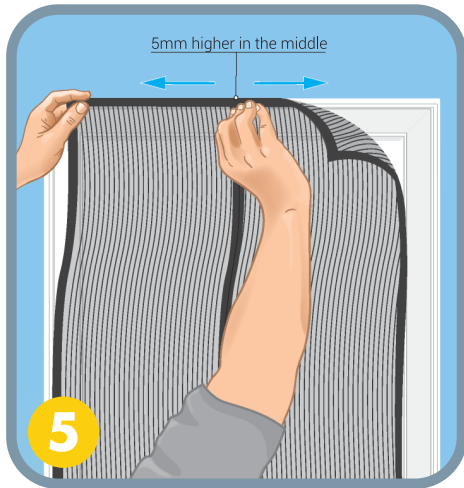
3

Lay screen door flat on floor, with tie back strings resting on screen. Apply velcro along the top, and down each side of the screen.



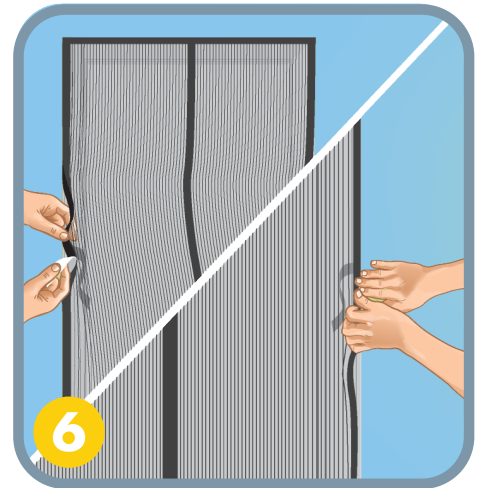
4

Peel off the white backing tape from top velcro. Hold screen at center top. (make sure it isn't touching floor) and fix it to center mark of the door frame.



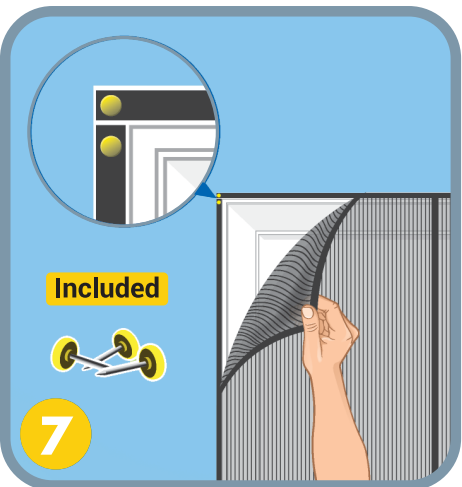
5

Attach the rest of top velcro to door frame. Center top of screen should be 5mm/.20in higher than right and left ends.



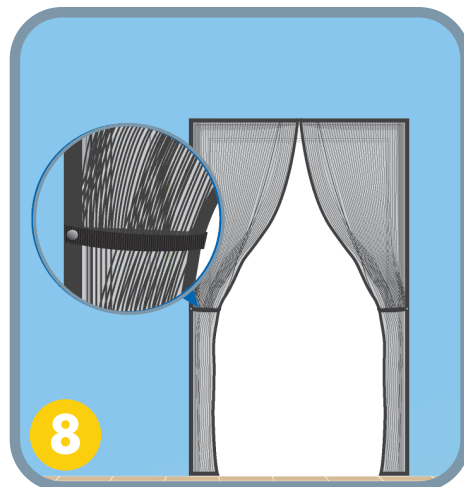
6

Peel off back of velcro bit by bit to fix sides of screen to door frame. (tie back strings should not stick out)



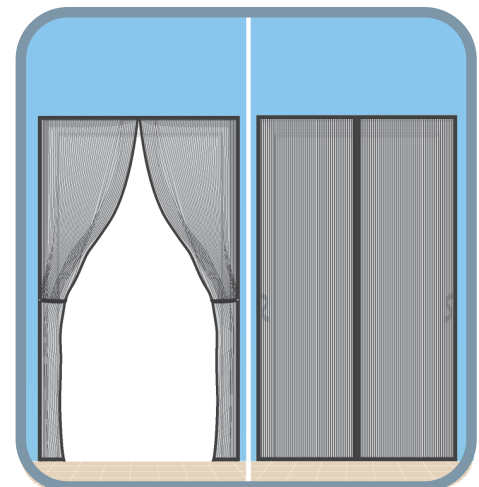
7

For a more permanent fixing on the wooden frames, use the supplied push pins. Peel the screen away from velcro, and push pins into the velcro. Next, re-attach screen.



8

Snap tie back string on each side to keep screen open.



Tie Back Features