

Installation instructions

Pitcher water filter

Model: **AQK-CF10A**

A replacement for the following water filter:

PUR® filter

CRF-950Z

Feature: Adopts premium resin and activated carbon to reduce chlorine, taste and odor; Adopts upgraded structure to realize easy installation.

In accordance with EN 17093;
Average Chlorine Reduction 86%
Filtration Capacity: 150L

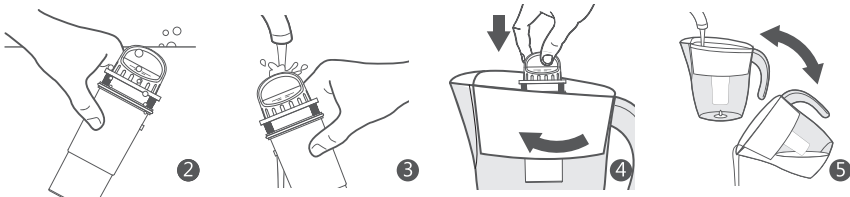


REPLACEMENT
ELEMENT

Tested and Certified by NSF International against **NSF/ANSI Standard 42 in model ECF-7016XX-10AZ/ECF-7017XX-10AZ/ECF-7019XX-10AZ** for the reduction of the claims specified on the Performance Data Sheet, and to **NSF/ANSI 372 ($\leq 0.25\%$ lead).**

Installation instructions

1. Remove the filter from all packaging.
2. Place the filter into a bowl of clean cold tap water, push gently down until submerged and bubbles of air are released. Leave for 15 minutes.
3. Remove filter from the water and rinse under tap to clean.
4. Put the filter into the pitcher or dispenser, and then rotate to lock it
5. Fill the tank with cold water. Allow to filter through and discard. Repeat this step twice more.



⚠ Caution:

This filter should not be used with water that is microbiologically unsafe or of unknown quality without adequate disinfection before or after the system.

Storage and maintenance:

- Replace your filter every 150L to achieve optimal performance and prevent bacteria and fungus growth in your filter.
- Keep your unused filters in a cool, dark, and dry place until you need them.
- It is advised that all filtered water is stored in the refrigerator and discarded after 48 hours if not consumed.

Frequently asked questions:

Q: Why does the flow rate slow down after a period of use?

A: After a period of use of the filter, the resin and activated carbon will become dense. You can take out the filter and shake it to make the filter material fluffy and then put it back to use.

Q: Why are there black specks in the water?

A: These little carbon granules are called fines. All of the quality filters in the market require a preliminary flushing to remove the carbon fines. This is especially true if you have scale or lime water.

Q: Do I have to change my filter every 150L?

A: Yes, you must replace the filter every 150L or sooner if water flow is reduced or if there is heavy sediment / rust present.

Warning:

To reduce the risk of property damage due to water leakage, this filter MUST be installed in accordance with the manufacturer's specifications and instructions. This filter unit must be replaced every 150L. Failure to follow instructions and operating specifications will void your warranty. Further, manufacturer assumes no responsibility or liability for damages arising out of misuse of the product.

Pur® is a registered trademark of Helen of Troy Limited.

Pur® is used for reference purposes only.

*The service life mentioned above is subject to chlorine reduction.
Actual result varies according to the local water quality.

Performance data sheet:

System Model No : ECF-7016XX-10AZ/ECF-7017XX-10AZ/ECF-7019XX-10AZ

Substance reduction:

The system has been tested and certified by the NSF International according to NSF/ANSI Standard 42 and NSF/ANSI Standards 372. The concentration of the indicated substances in water entering the system was reduced to a concentration less than or equal to the permissible limit for the water leaving the system, as specified by NSF/ANSI Standard 42. While testing was performed under standard laboratory conditions, actual performance may vary.

Substance	Inf. Average	NSF Specified Challenge Concentration	Ave. % Reduction(%)	Average Product Water Concentration	Max Permissible Product Water Concentration	NSF Reduction Requirements	NSF Test Report
Chlorine Taste and Odor	2.0 mg/L	2.0mg/L±10%	96.5%	0.05mg/L	N/A	≥50%	J-00355920

System to be used with municipal or well water sources treated and tested on regular basis to ensure bacteriological safe quality. Do not use with water that is microbiologically unsafe or of unknown quality without adequate disinfection before or after the system.

 Testing was performed under standard laboratory conditions, actual performance may vary.

Qingdao Ecopure Filter Co., Ltd.

Tel: 1-888-352-3558 (U.S.)

E-mail: service@water-filter.com

Add.: No.13, Yishengbai Road, Jimo, Qingdao, China



Made in China V004