

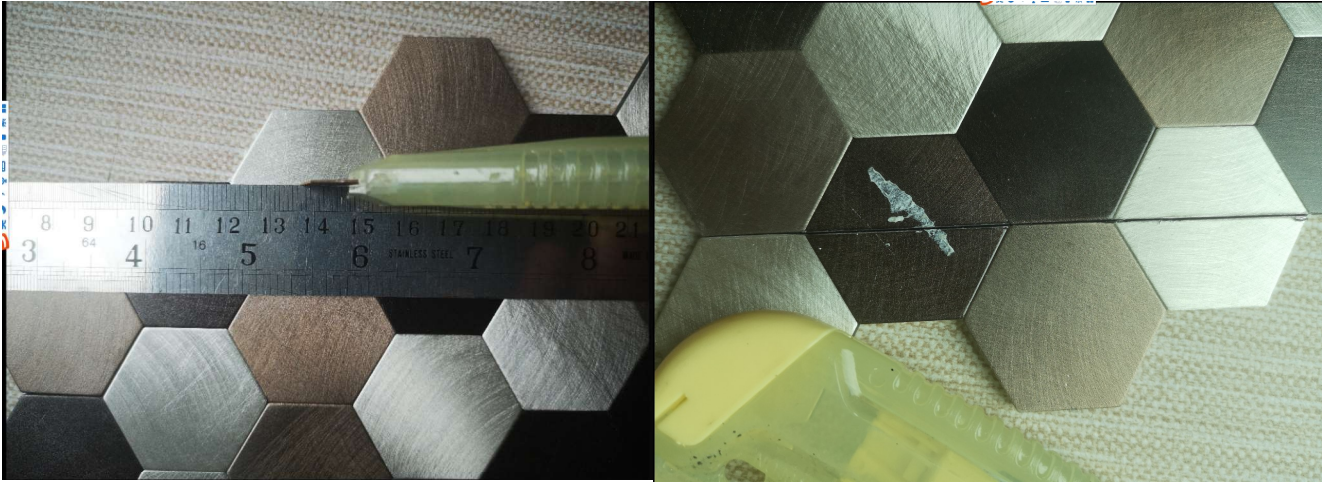
## Cut Straight Line on Decopus Aluminum Mosaic Tile with SIMPLE Tools

Use: Metal Ruler, Utility Cutter (really sharp one), Protective Glove, Sandpaper

Affirm the tile on cutting mat. Wear glove avoid accidental finger cut.

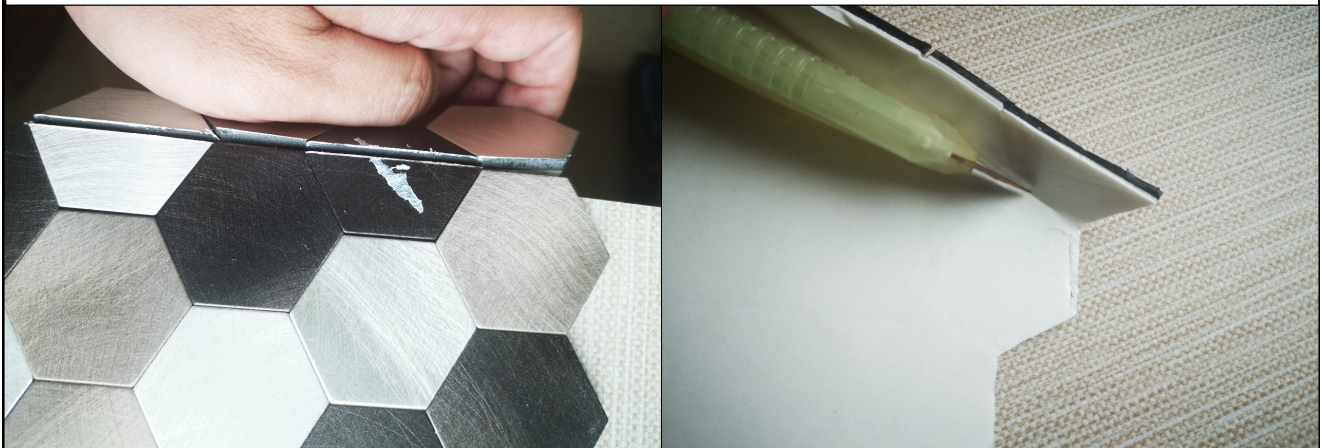
Align the straight line with the ruler.

Cut firm and hard. Best to cut in one time on each chip. Only need to cut thru the aluminum and 1/2, 2/3 of the the middle Polythene.



Bend the cut-open edge with hand hardly.

Cut the backing glue paper from the back ('d better bending the cutting edge while cutting).



Straight Cut is done.

Fine polish the edge with sandpaper.

\*\* Tips: after fixing the on your backslash, could cover the edge with silicone on the edge/rims.

