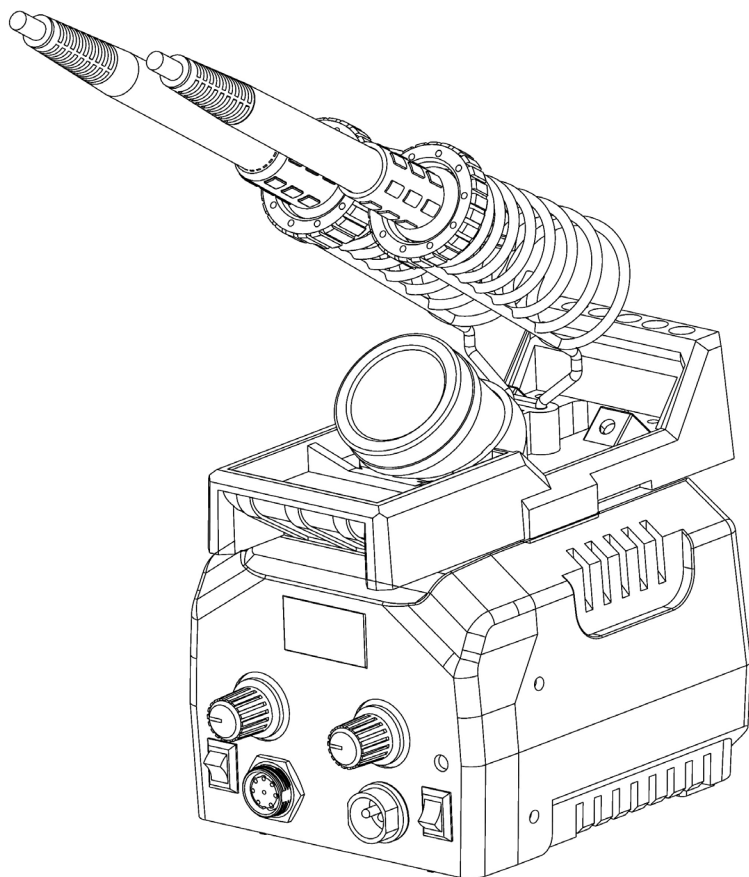




# PROFESSIONAL PYROGRAPHY TOOL INSTRUCTION





## EXCLUSIVE MEMBERSHIP



Member Day Surprise



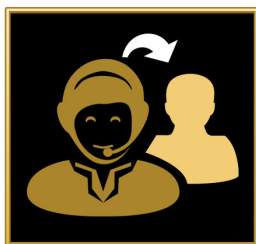
New Sample Experience



6 Month Extra Warranty



3 Month Extra Return



1V1 Online Service



Most Valuable Client

## IMPORTANT SAFEGUARDS

When using electrical appliances, basic safety precautions should always be followed including the following:

### CAUTION!!! WARNING!!!

#### Read instruction manual before using.

1. To provide continued protection against risk of electric shock, connect to properly grounded outlets only.
2. Do not immerse in water.
3. Hot Surface. Avoid Contact.
4. Shock Hazard. To provide continued protection against electric shock disconnect from the power supply when not in use.
5. Heat gun, soldering iron, desoldering iron must be placed on its stand when not in use.
6. HOUSEHOLD AND INDOOR USE ONLY.
7. To prevent electric shock, unplug before replace the fuse and other service.
8. Replace only with same type and rating of fuse.
9. This appliance is not intended for use by persons (including children) with reduced physical, sensory or mental capabilities, or lack of experience and knowledge, unless they have been given supervision or instruction concerning use of the appliance by a person responsible for their safety.
10. Children should be supervised to ensure that they do not play with the appliance.
11. The soldering iron and desoldering iron is only to be used with the power supply unit provided with the appliance.
12. If the SUPPLY CORD is damaged, it must be replaced by the manufacturer, its service agent or similarly qualified persons in order to avoid a hazard.
13. Any servicing should be performed by an authorized service representative AND that the product has no user serviceable parts.
14. To reduce the risk of fire or electric shock, do not expose this product to rain or moisture. Store indoors. Read instruction manual before using.
15. A fire may result if the appliance is not used with care, therefore
  - be careful when using the appliance in places where there are combustible materials;
  - do not apply to the same place for a long time;
  - do not use in presence of an explosive atmosphere;
  - be aware that heat may be conducted to combustible materials that are out of sight;
  - place the appliance on its stand after use and allow it to cool down before storage;
  - do not leave the appliance unattended when it is switched on.
16. Hidden areas such as behind walls, ceilings, floors, soffit boards and other panels may contain flammable materials that could be ignited by the heat gun when working in these locations. The ignition of these materials may not be readily apparent and could result in property damage and injury to persons. When working in these locations, keep the heat gun moving in a back-and-forth motion. Lingering or pausing in one spot could ignite the panel or the material behind it.
17. WARNING: Extreme care should be taken when stripping paint. The peelings, residue and vapors of paint may contain lead, which is poisonous. Any pre-1977 paint may contain lead and paint applied to homes prior to 1950 is likely to contain lead. Once deposited on surfaces, hand to mouth contact can result in the ingestion of lead. Exposure to even low levels of lead can cause irreversible brain and nervous system damage; young and unborn children are particularly vulnerable.
18. Before beginning any paint removal process you should determine whether the paint you are removing contains lead. This can be done by your local health department or by a professional who uses a paint analyzer to check the lead content of the paint to be removed.
19. LEAD-BASED PAINT SHOULD ONLY BE REMOVED BY A PROFESSIONAL AND SHOULD NOT BE REMOVED USING A HEAT GUN.

20. Persons removing paint should follow these guidelines:

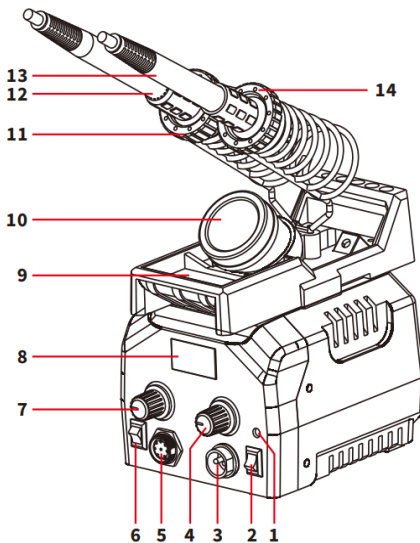
- 1) Move the work piece outdoors. If this is not possible, keep the work area well ventilated. Open the windows and put an exhaust fan in one of them. Be sure the fan is moving the air from inside to outside.
- 2) Remove or cover any carpets, rugs, furniture, clothing, cooking utensils and air ducts.
- 3) Place drop cloths in the work area to catch any paint chips or peelings. Wear protective clothing such as extra work shirts, overalls and hats.
- 4) Work in one room at a time. Furnishings should be removed or placed in the center of the room and covered. Work areas should be sealed off from the rest of the dwelling by sealing doorways with drop cloths.
- 5) Children, pregnant or potentially pregnant women and nursing mothers should not be present in the work area until the work is done and all clean up is complete.
- 6) Wear a dust respirator mask or a dual filter (dust and fume) respirator mask which has been approved by the Occupational Safety and Health Administration (OSHA), the National Institute of Safety and Health (NIOSH), or the United States Bureau of Mines. These masks and replaceable filters are readily available at major hardware stores. Be sure the mask fits. Beards and facial hair may keep masks from sealing properly.  
Change filters often. DISPOSABLE PAPER MASKS ARE NOT ADEQUATE.
- 7) Use caution when operating the heat gun. Keep the heat gun moving as excessive heat will generate fumes which can be inhaled by the operator.
- 8) Keep food and drink out of the work area. Wash hands, arms and face and rinse mouth before eating or drinking. Do not smoke or chew gum or tobacco in the work area.
- 9) Clean up all removed paint and dust by wet mopping the floors. Use a wet cloth to clean all walls, sills and any other surface where paint or dust is clinging. DO NOT SWEEP, DRY DUST OR VACUUM. Use a high phosphate detergent or trisodium phosphate (TSP) to wash and mop areas.
- 10) At the end of each work session put the paint chips and debris in a double plastic bag, close it with tape or twist ties and dispose of properly.
- 11) Remove protective clothing and work shoes in the work area to avoid carrying dust into the rest of the dwelling. Wash work clothes separately.  
Wipe shoes off with a wet rag that is then washed with the work clothes. Wash hair and body thoroughly with soap and water.
21. To ensure personal safety, please turn off the power switch after work is completed; When not in use for an extended period, please unplug the power cord!!!
22. Do not install nozzle when the hot air gun is turned on, the heat pipe and the nozzle must be cooling. Then install the other nozzle.
23. The soldering iron should only be used for soldering. Do not hit the soldering iron against the work surface to remove flux residues  
(Can be cleaned by the cleaning device of the product), as doing so may seriously damage the soldering iron.
24. Soldering produces fumes, ensure there is adequate ventilation.
25. After used, remember that cooling the unit, the handle should be placed on the handle holder.
26. Longer detachable power-supply cords) are available and may be used if care is exercised in their use.
27. If a long detachable power-supply cord is used:
  - 1) The marked electrical rating of the detachable power-supply cord or extension cord should be at least as great as the electrical rating of the appliance;
  - 2) The extension cord should be a grounding type 3-wire cord;
  - 3) The longer cord should be arranged so that it will not drape over the countertop or tabletop where it can be tripped over, snagged, or pulled on unintentionally (especially by children).
28. A short power-supply cord(or short detachable power-supply cord)is provided to reduce the risks resulting from becoming entangled in or tripping over a longer cord.

## 1.SPECIFICATION

( Determine the voltage properties according to your order )

Model	939D II
Rated voltage	220V~240V/AC,50Hz    110V-127V/AC,60Hz
Maximum power	150w
Rated power	48w
Main unit dimensions	L144*W125*H90mm $\pm$ 5mm
Temperature range (temperature adjustable pen)	250°C~750°C / 482°F~1382°F
Temperature range (thermostatic pen)	200°C~480°C / 392°F~896°F
Operating ambient temperature	0°C~40°C / 32°F~104°F
Storage temperature	-20°C~80°C/ -4°F~176°F
Storage humidity	35%~45%

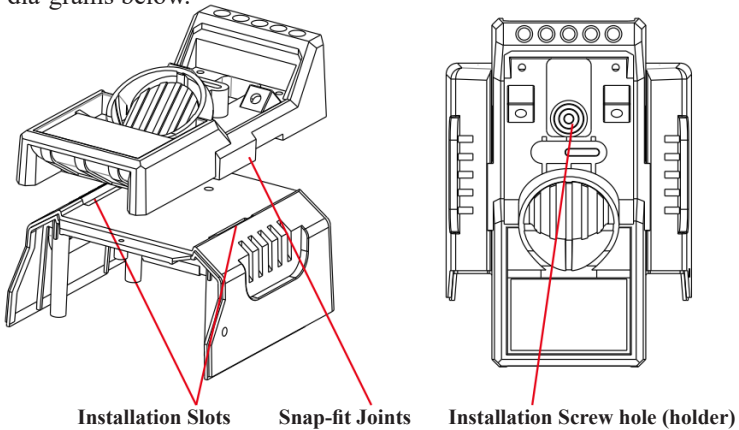
## 2.PRODUCT DIAGRAM



- 1). Operating Indicator Light
- 2). Power Switch  
(Temperature-Adjustable Pen)
- 3). Receptacle (Temperature-Adjustable Pen)
- 4). Temperature Adjustment Dial  
(Temperature-Adjustable Pen)
- 5). Receptacle(Thermostatic Pen)
- 6). Power Switch(Thermostatic Pen)
- 7). Temperature Adjustment Dial  
(Thermostatic Pen)
- 8). Temperature Display (Thermostatic Pen)
- 9). Residue Tray
- 10). Pyrography Tips Storage Tin
- 11). Pen Holder
- 12). Thermostatic Pen
- 13). Temperature-Adjustable Pen
- 14). Pen Holder

### 3. OPERATION

(1). Depending on the users' preferences, it is optional to install the pyrography pen holder either at the side of the station or on top of the station. Install the holder as per the dia-grams below.



- (2). Insert the holder's snap-fit joints into the installation slots, → Insert the screw into the holder's installation screw hole, and fasten the screw to lock the holder into place.
- (3). Install the spring tube into the pen holder.
- (4). Connect the pen to the station, and place the pen into the pen holder.
- (5). Turn on the power switch, and the tip will begin heating. The heating indicator will turn on. You can then proceed to set the desired temperature. Begin operation once the tip reaches the set temperature.
- (6). Once the operation is complete, place the pen back to the pen holder, then turn off the power switch. If the machine is not in use for an extended period, disconnect the power plug.
- (7). Brief Introduction to the Basic Pyrography Tips.



**General Pyrography Tip-** For basic wood burning techniques.



**Shader Tip-** For light gradient or dark shading, you can create smooth, evenly-colored shades.



**Smooth Round-Point Tip-** For curved lines, dots, and fine-detailing, great for calligraphy and point-shading.



**Conical Sharp Tip-** For fine-lines, dots, and curves.

(8). The use of pyrography wire nibs.



**Point Tip** -For outlining, thin lines, and detailing.



**Spoon Nib** -For texts, detailing, low-temperature depth-of-field shading.



**Skewed Point Nib** -For shading, outlining.



**Skewed sharp shader** -For Fine-Shading, Fine-Detailing, and Feathers.



**Skewed Flat Shader** -For shading, feathering, outlining & cutting with the blade edge.



**Curved Tip** -For shading, fine-outlining, and general drawing.



**Diamond Point Nib** -For detailing and outlining.



**Round Wire Nib** -For outlining and feathering.



**Long Round Point Wire Nib** -For outlining, feathering and shading.



**Long Sharp Flat Nib** -For outlining, fine-feathering, and fine shading.



**Flat Nib** -For flat surfaces, shading, low-temperature multi-layer shading.



**Knife shader** -For feathers, fine-lines, shading, low-temperature depth-of-field shading.



**Skewed Round shader** -For shading large surfaces, and outlining.



**Skewed Point Nib** -For outlining small-area.



**Skewed sharp Nib** -Feathering, fine-outlining, cutting & carving and detailing.



**Curved Flat Shader** -For shading, fine-feathering, outlining, and cutting & carving.



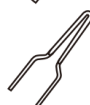
**Diamond Flat Shader** -For shading, outlining and cutting & carving.



**Flat Round Shader** -For outlining, feathering, and shading.



**Long flat shader** -For outlining, feathering, and precision low-temperature shading.

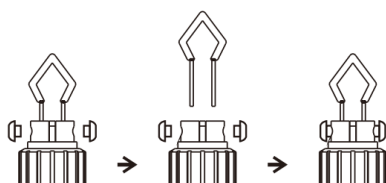


**Long Flat Shader XL** -For outlining, feathering, shading, and cutting.

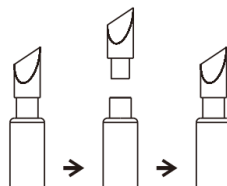
## 4. MAINTENANCE & PRECAUTIONS

### Replacing the tips

Unscrew the locking screws →  
Remove the tip → Install the new tip  
→ Put the locking screws back on.



Unscrew the Pyrography Tip, change  
into a new tip, and screw the new tip  
into the thermostatic pen.



## 5. APPLICATIONS

This station is suitable for pyrography works on gourds, woods, leather, wheatstalks, tree barks, bamboos, furniture, and more.

## Fast To Buy Limited

Address: #5009, 5F, Shenzhou Chengyun Building, Bantian Subdistrict,  
Longgang District, Shenzhen City, 518000, Guangdong, China

Web: [www.fasttobuy.com](http://www.fasttobuy.com)

Tel: +86-755-82550561

Facebook: <https://www.facebook.com/servicefasttobuy>



### **Warranty Terms:**

- 1.The table for feedback from customers should be returned to our company within a month after the date of purchase.In this way,customers may enjoy one-month repair warranty.
- 2.Repair Warranty and Purchase Certificate should be presented.The warranty only applies when all the required documents are available.
- 3.The warranty does not apply when the equipment has received damage through abuse,carelessness,improper installation,accident or mishandling during shipment,connecting to improper line voltage,or has been serviced by anyone other than an authorized factory representative.
- 4.After the warranty period,we are ready to provide charged repair service,perfect as always.

### **Dear Sir / Madam:**

Thank you for purchasing our products.' To improve our service and ensure the proper use of our products,please kindly write down your suggestions.

**Name of Product:** \_\_\_\_\_

**Date of Purchase:** \_\_\_\_\_

**Your Suggestions:** \_\_\_\_\_

**Package:** \_\_\_\_\_

**Functions:** \_\_\_\_\_

**Others:** \_\_\_\_\_

**Date :** \_\_\_\_\_

### **GUARANTEE CARD**



The product conforms to the technical standards

QC. \_\_\_\_\_

Fast To Buy Limited

### **GUARANTEE CARD**

The warranty is valid in one year since the purchase of this ,any quality problem found,please send back to us with courier fee to be collected,upon receipt of the returning unit,we will repair it and send back to customer within two working days.

Notice:Please enclose the warranty card along with the returning product, or else we have the right to reject the repairing,thanks for your corporation.



## EXCLUSIVE MEMBERSHIP



Member Day Surprise



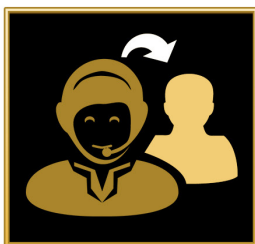
New Sample Experience



6 Month Extra Warranty



3 Month Extra Return



1V1 Online Service



Most Valuable Client