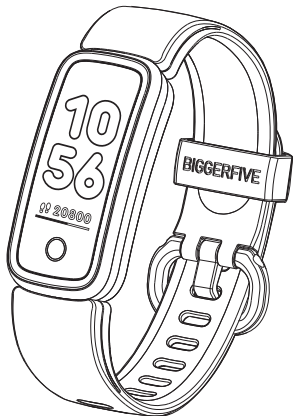


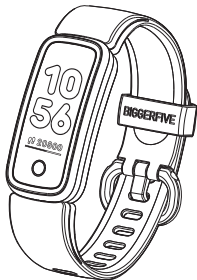
BIGGERFIVE



VIGOR

Quick Start Guide

1



EN Compatibility

DE Kompatibilität

FR Compatibilité

IT Compatibilità

ES Compatibilidad



iOS 9.0⁺



Android 6.0⁺



2



EN Charge

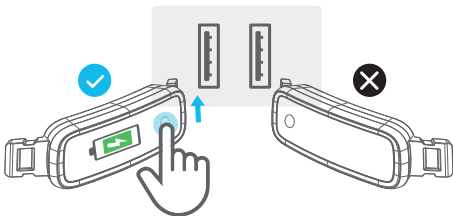
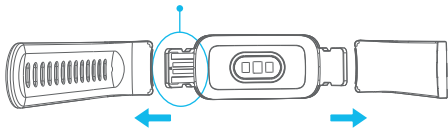
DE Aufladen

FR Mise en Charge

IT In Carica

ES Cargando

USB Port



3



- EN** Install APP and Set up Kids Fitness Trackers
- DE** Installieren Sie die APP und richten Sie Kids Fitness Tracker ein
- FR** Installez l'APP et configurez les trackers de fitness pour enfants
- IT** Installa l'APP e imposta i tracker fitness per bambini
- ES** Instale la aplicación y configure los rastreadores de actividad física para niños



4



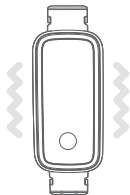
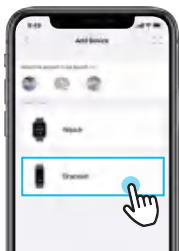
EN Pair

DE Paar

FR Paire

IT Partita

ES Par



5



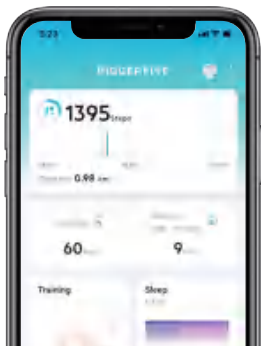
EN Activity Tracking

DE Aktivitätsverfolgung

FR Suivi d'activité

IT Monitoraggio Attività

ES Seguimiento de Actividad



6



EN Heart Rate Monitoring

DE Herzfrequenzüberwachung

FR Moniteur de Fréquence Cardiaque

IT Monitoraggio della Frequenza Cardiaca

ES Monitoreo de Frecuencia Cardíaca



7



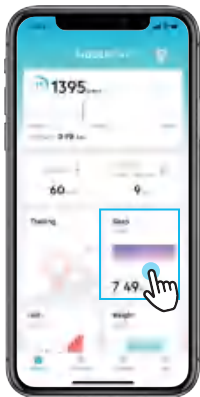
EN Sleep Tracking

FR Suivi du Sommeil

ES Seguimiento del Sueño

DE Schlafverfolgung

IT Monitoraggio del Sonno

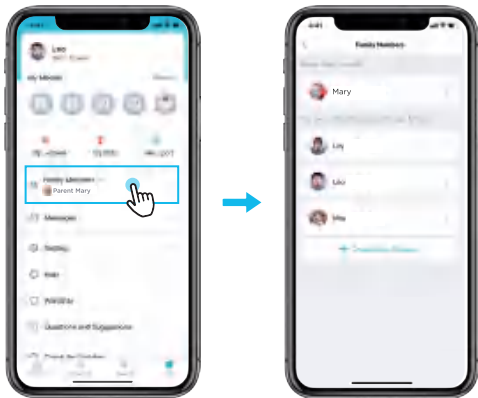


8



EN Family Account **DE** Familienkonto **FR** Compte Famille

IT Conto Famiglia **ES** Cuenta Familiar



9



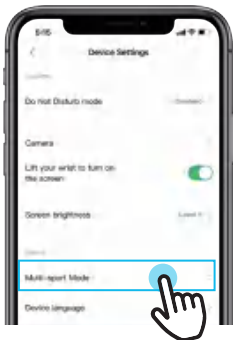
EN Multi-sport Modes

FR Mode Multisports

ES Modo Deportivo Múltiple

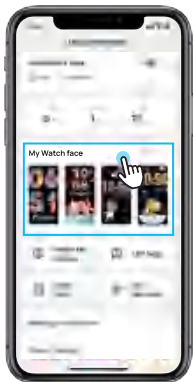
DE Mehrere Sportmodi

IT Modalità Sport Multiplo





- EN** Multiple Watch Faces
- DE** Mehrere Zifferblätter
- FR** Cadrans de Montre Multiples
- IT** Più Quadranti Dell'orologio
- ES** Múltiples Esferas de Reloj



11



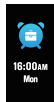
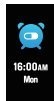
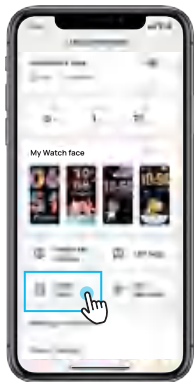
EN Alarm Clock

DE Wecker

FR Réveil

IT Sveglia

ES Despertador



12



IP68



IP68





| | | | |
|-----------------------|---------------|-------------------|----------------|
| Model Number | BF160 | Screen Type | 0.96 " TFT-LCD |
| Battery Capacity | 90mAh | Charging Voltage | 5V±0.2V |
| Charging Time | About 2 Hours | Battery Life | 5-7 Days |
| Waterproof | IP68 | Weight of Product | 19.6g |
| Operating Temperature | 0°C-60°C | Bluetooth Version | BLE4.2 |
| Product Frequency | 2402-2480MHz | FCC ID | 2ADFC-VIGOR |
| IC | 28916-BF200 | | |

FCC Requirement

Changes or modifications not expressly approved by the party responsible for compliance could void the user's authority to operate the equipment.

This device complies with Part 15 of the FCC Rules. Operation is subject to the following two conditions:

- (1) this device may not cause harmful interference, and
- (2) this device must accept any interference received, including interference that may cause undesired operation.

Note: This equipment has been tested and found to comply with the limits for a Class B digital device, pursuant to Part 15 of the FCC Rules. These limits are designed to provide reasonable protection against harmful interference in a residential installation. This equipment generates, uses, and can radiate radio

frequency energy, and if not installed and used in accordance with the instructions, may cause harmful interference to radio communications. However, there is no guarantee that interference will not occur in a particular installation. If this equipment does cause harmful interference to radio or television reception, which can be determined by turning the equipment off and on, the user is encouraged to try to correct the interference by one or more of the following measures:

- Reorient or relocate the receiving antenna.
- Increase the separation between the equipment and receiver.
- Connect the equipment into an outlet on a circuit different from that to which the receiver is connected.
- Consult the dealer or an experienced radio/TV technician for help.

IC Warning

This device contains licence-exempt transmitter(s)/receiver(s) that comply with Innovation, Science and Economic Development Canada's licence-exempt RSS(s). Operation is subject to the following two conditions:

- (1) This device may not cause interference.
- (2) This device must accept any interference, including interference that may cause undesired operation of the device.

L'émetteur/récepteur exempt de licence contenu dans le présent appareil est conforme aux CNR d'Innovation, Sciences et Développement économique Canada applicables aux appareils radio exempts de licence. L'exploitation est autorisée aux deux conditions suivantes :

- 1) L'appareil ne doit pas produire de brouillage;
- 2) L'appareil doit accepter tout brouillage radioélectrique subi, même si le brouillage est susceptible d'en compromettre le fonctionnement.



[EN] For FAQs and more information, please visit:

[DE] FAQs und weitere Informationen finden Sie unter:

[FR] Pour la FAQ et plus d'informations, veuillez visiter:

[IT] Per domande frequenti e ulteriori informazioni, visitare:

[ES] Para preguntas frecuentes y más información, visite:

support.biggerfive.com

