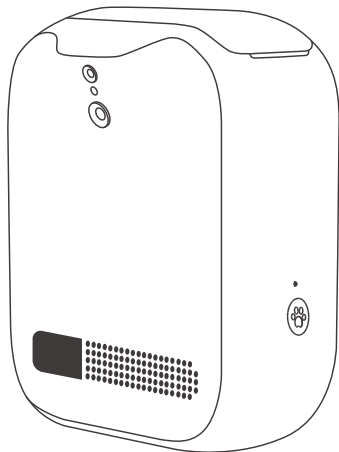


CENGCEN Pet-treat Camera User Guide



Download for IOS



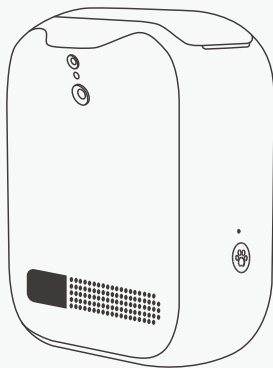
Download for Android



Contents

1. Packing List	01
2. Components Description	02
3. Parameter Table	03
4. Installation and Connection	04
5. Network Configuration	06
6. AP Connection (only for the failure of scanning QR code)	10
7. How it Works	15
8. Instructions for Use of Small Accessories	26
9. Description of the Best Use Situation	27
10. The Best Snacks Recommended	28
11. Cleaning Recommendations	28
12. Precautions	29
13. Q&A	31
14. Disclaimer	35

1. Packing List



CENG CEN Pet-treat Camera



User Guide



Power Adapter

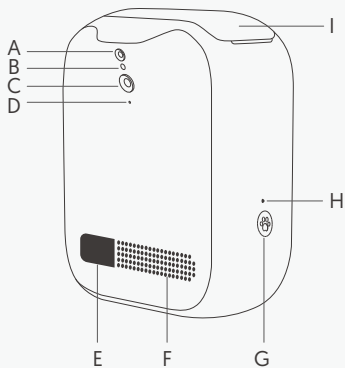


Wall Hook



Shading Stickers

2. Components Description



A. Infrared Night Vision Light

B. Photoresistor

C. Lens

D. Microphone Receiving Hole

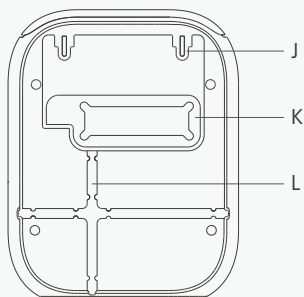
E. Snacks Ejection Port

F. Broadcast Hole

G. Button

H. Indicator Light

I. Silicone Cover

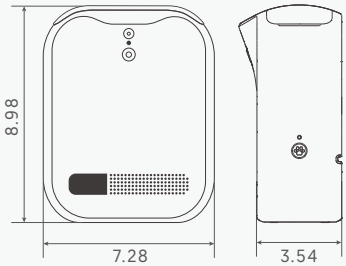


J. Hook Slot

K. Winding Groove

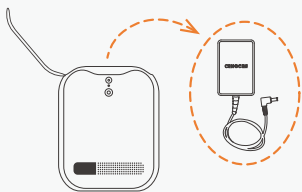
L. Wire Trough

3. Parameter Table

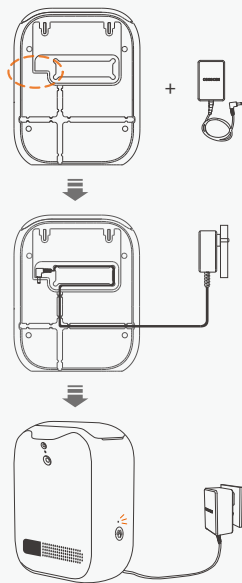
Dimensions (inches)	
Net weight	1.98 lbs
Packaging weight	2.78 lbs
Packing dimensions (L*W*H)	8.66*5.31*10.83 inches
Volume	13.53 oz
Video	Video quality: 1080P FOV: 130° (diagonal) Focal length: 0.11 inches
Power supply	12V, 2A
Power adapter	100-240V 50-60HZ 0.5A
Wireless network	2.4GHz & 5Ghz dual frequency WiFi module
Placement	Mounted on wall, placed on table or on floor
Mobile operating system requirement	Android 4.2 or later IOS 10.2 and Iphone 6 or later

4. Installation and Connection

4.1. Take out the product from the package. And then open the silicone cover to take out the power adapter.



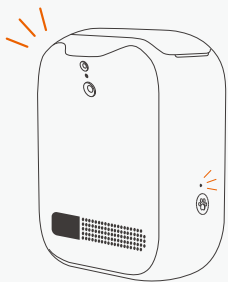
If the power cord is too long, you can wind the cord to the winding groove on the back of the device (as shown in the picture below).



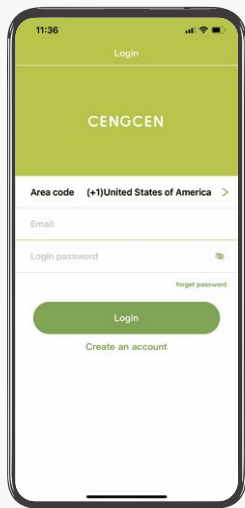
4.2. Power on: Insert the DC round head of the power cord into the power port at the indication on the back of the device, and insert the power cord into the power socket. When the indicator light is on, the device is powered on successfully (as shown in the right picture).

4.3. At this time, the Pet-treat Camera will stay in the low light mode for about 30 seconds (as the system is starting).

After the system is started, the indicator light will change to the single flash mode, which means that the device is not connected to network. And then the device will prompt "ready to be connected".



4.4. After the app is downloaded, launch it, register a new account for the CENG-CEN app, and then log in to the app.



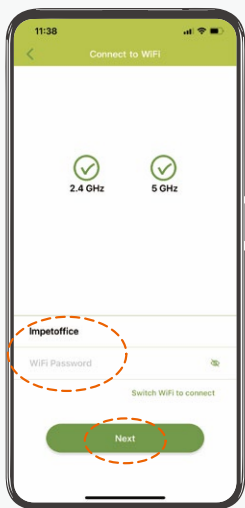
5. Network Configuration



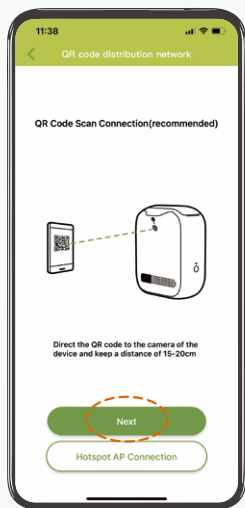
5.1. First click on the option "Add a new device".



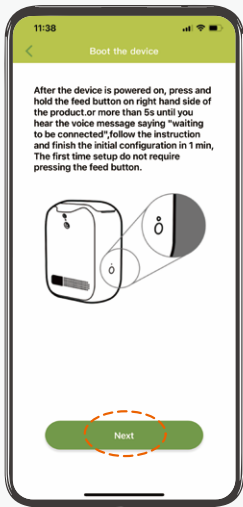
5.2. Click on the "model" you purchased from the top options and then click on the bottom "Select equipment".



5.3. Click "Next" after connecting indoor WiFi. At this step, you need to confirm that the mobile phone has been connected to the indoor WiFi, and it is recommended to use the QR code to connect this product with indoor WiFi.



5.4. An operation tip of using the QR code to configure the network and connect to the camera appears. After confirming, click "Next".



5.5. A prompt for power-on and installation of the device appears, and click "Next" after confirming.



5.6. When the QR code for network configuration appears, align the QR code on the mobile phone with the camera on the front of the device, and keep a distance of about 5.90-7.87 inches. After hearing the "beep" sound for connection, click "Hear tone".

5.7. Assuming that the device does not continue to send the prompt sound indicating that the device scans the QR code successfully. It is recommended to use the backup "Hotspot AP Connection" to connect to the network (see on Page 10).

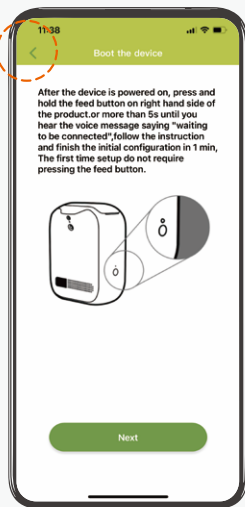


5.8. Then there will be the connection progress on the screen. After the device makes a "beep" sound for the successful connection, the device name editing window will pop up. Enter the device name and confirm, and then it will successfully jump to the app homepage. You can start to experience the interaction between CENGREN app software and pets.

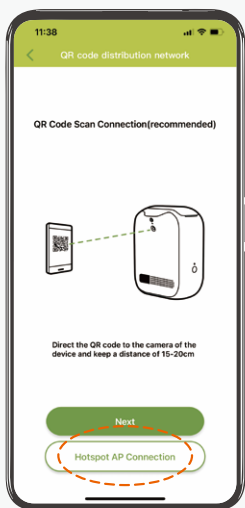
6. AP Connection (only for the failure of scanning QR code)



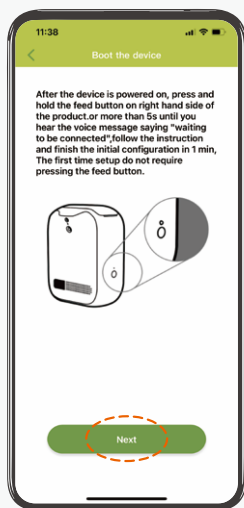
6.1. Click on the top left "<" to return to the previous page.



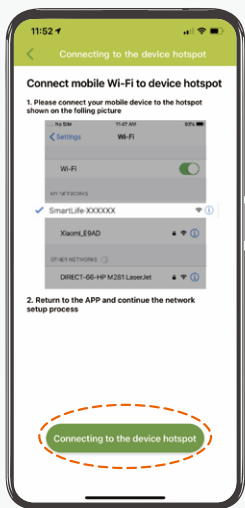
6.2. Continue to click the top left "<" to return to the previous page.



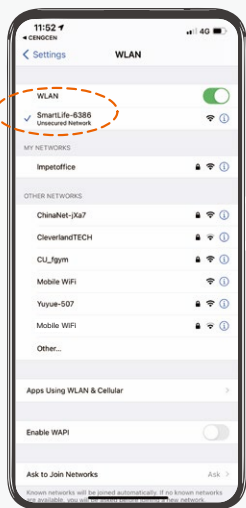
6.3. Select "Hotspot AP Connection".



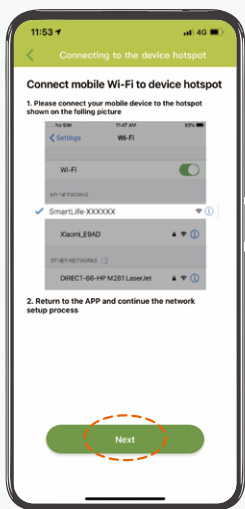
6.4. Reset prompt. If you have heard the sound "Ready to be connected" at the beginning, click "Next".
If there is no prompt, press and hold the button on the right side of the device for 5s to reset. You will hear the sound "Ready to be connect-ed", and then you can go on to the next step.



6.5. Connect to the device hotspot, the name of which usually being "Smartlife-XXXX".



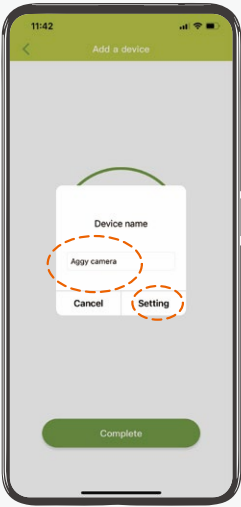
6.6. Connect to the device hotspot by entering the phone's WiFi Settings.



6.7. After connecting to the device hotspot, return to the previous page and click "Next".

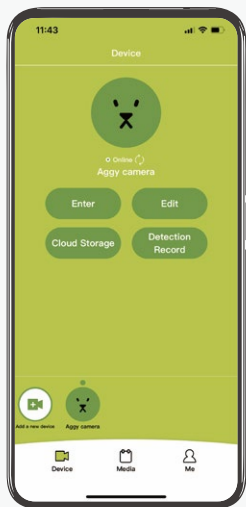


6.8. Then there will be the connection progress on the screen. After the device sends out the prompt "Connection successful", the device name editing window will pop up [as shown in the picture below].



6.9. Enter the device name and confirm, and then it will successfully jump to the APP homepage. You can start to experience the interaction between CENG CEN app software and pets.

7. How it Works



7.1. After it is connected successfully, there will be four options on the homepage, which are "Enter", "Edit", "Cloud Storage" and "Detection Record".



7.2. Click "Enter", and then start real-time video recording.



7.2.1. Feeding:

Click to start ejecting snacks, and click it continuously can achieve multiple feedings, up to three times.



7.2.2. Call:

Call: Click to adjust the volume of the user from the device, and long press to call the pet through the device.



7.2.3. Listening:

Click to receive the sound from the terminal of the

device directly, such as a pet's call, and click it again to mute it.



7.2.4. Recording:

Click to start recording.



7.2.5. Shooting:

Click to take a photo, and click it continuously can achieve continuous shootings.



7.2.6. At the bottom left of the screen, there is a button to flip the horizontal and vertical screens of the phone.

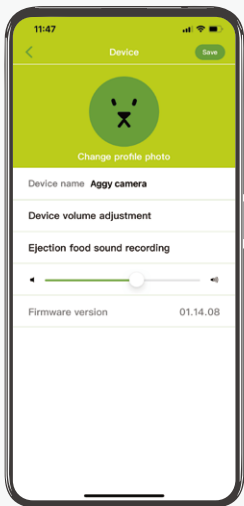


7.3. After flipping the vertical screen, the screen can be swiped left and right to watch the pet's position.



7.4. Click "Edit" to enter. In the page "Edit", there are four functions.

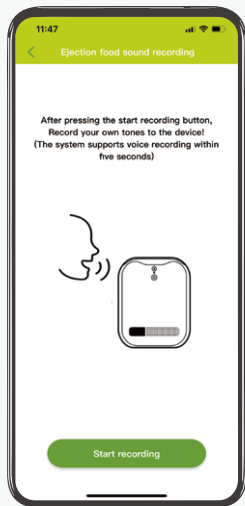
- [1] "Setting"
- [2] "Share device"
- [3] "Remove"
- [4] "Shared devices"



7.5. Settings: Rename and change avatar function.

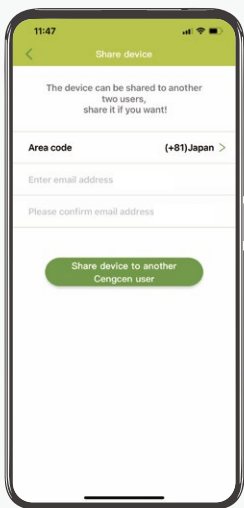
7.6. Click "Device Volume Adjustment" to adjust the volume of the treats ejecting prompt sound.

7.7. Click "Recording Treats Ejecting Prompt Sound" to enter the above page, and click "Start Recording" to



click "Start Recording" to record your exclusive prompt sound on the device [the system supports recording within 5 seconds]. The newly recorded voice will overwrite the original one.

Note: The recording needs to be recorded on the device, not on the mobile phone.

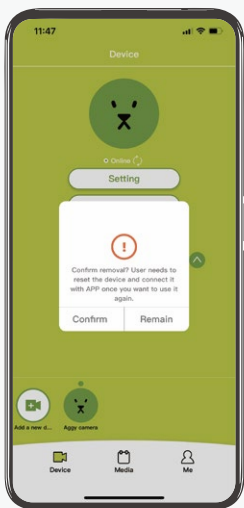


7.8. Sharing device:

Users can add relatives and friends' email addresses to allow them to use the user's CENGcen Pet-treat Camera to interact with pets [they need to download the app and sign up first].

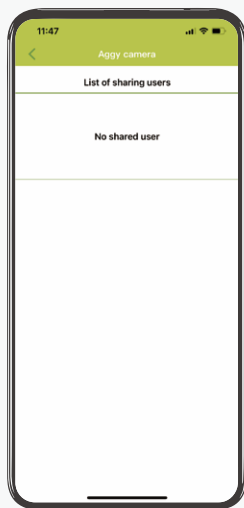
Similarly, you can also provide

your email address to your relatives and friends to enter and share their devices. After entering, you can use your relatives and friends' devices to interact with each other's pets [share with up to two users].



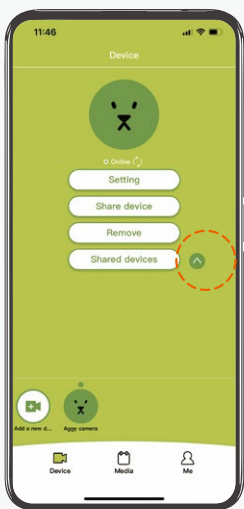
7.9. Remove:

Mainly remove the newly added CENCEN Pet-treat Camera. If there is only one machine connected, the mobile phone needs to be reconnected to the machine after removal.

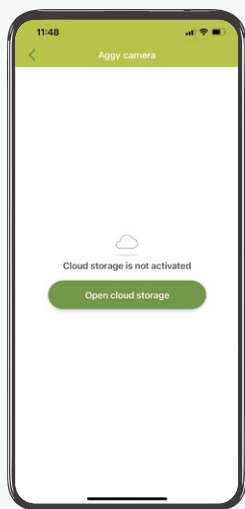


7.10. Sharing management:

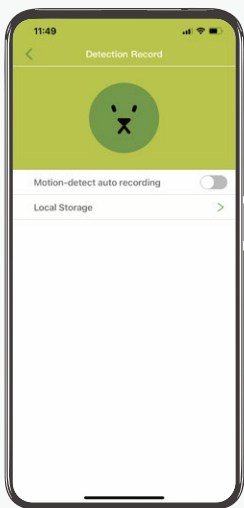
You can see the list of all relatives and friends shared by the user.



7.11. After setting, click the "small arrow" on the right side of the menu to re-enter the app homepage.



7.12. "Cloud storage" You can pay for more cloud storage space to store more images captured by detection record.

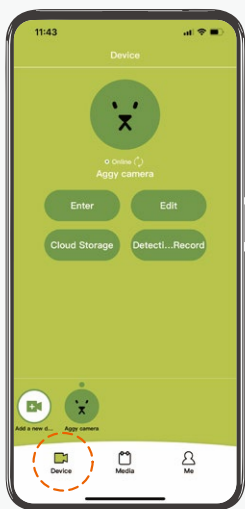


7.13. "Detection Record" can be selected to turn on the motion detection. If the device detects that a pet is moving within the lens, it will automatically leave an image record, and the image record will be uploaded to the "Local Storage".

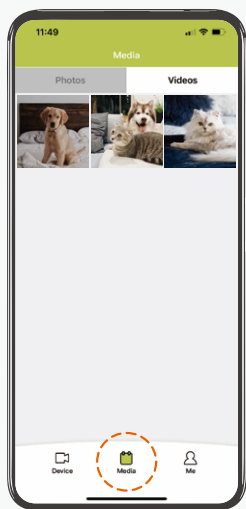
A 90-second video clip will be recorded when your Cengcen camera detects important pet-related events.

Video clips are available for up to 20 days in the local storage[16G TF card], earlier clips will be auto-deleted once the local storage is full.

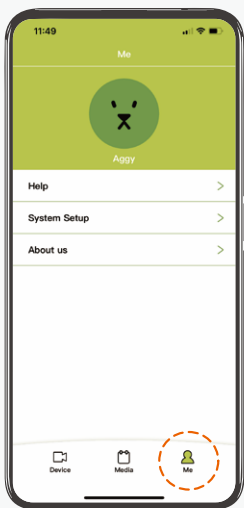
There is an optional cloud storage service charges \$\$\$ per month which allow you to have extra cloud storage and motion detection feature.



7.14. Options at the bottom of the homepage. Click "Device" to enter the homepage.



7.15. Click "Media" to view all the pictures and videos taken by the device.



7.16. Click "Me" to enter the system settings. In the page "Me", there are three functions.

[1] "Help"

[2] "System setup"

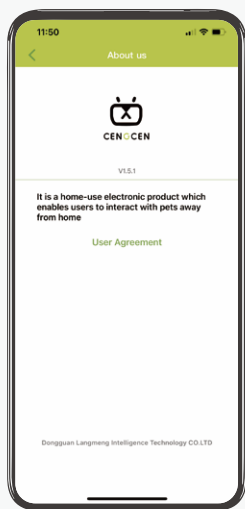
[3] "About us"



7.17. Click "Help" to get the detailed instruction about device installation, snacks supplement and device cleaning.

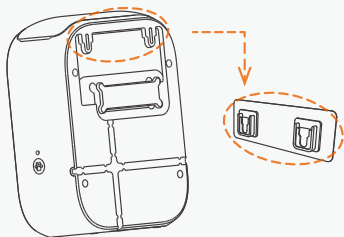


7.18. Click "System Setup" to reset the login password, clean cache, update the app to the latest version and exit the account.



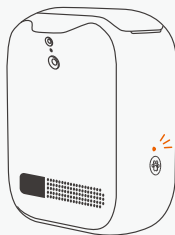
7.19. Click "About us" to get the fundamental information of CENG CEN Pet-treat Camera.

8. Instructions for Use of Small Accessories



8.1. Wall hook:

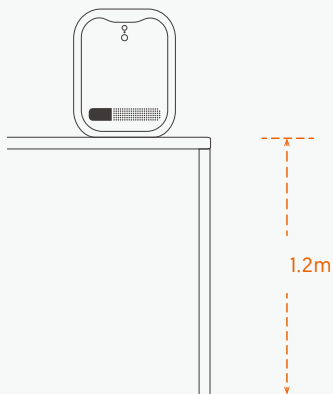
Align the hook slot on the back of the Pet-treat Camera with the wall hook and fix it by sliding the hook slot from the top to bottom. The load-bearing weight of this wall hook is 15.4lbs.



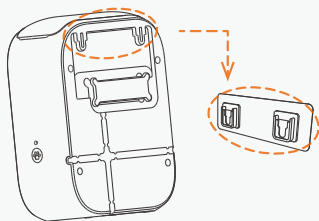
8.2. Shading stickers:

If the indicator light on the side of the device is too bright to affect the quality of the user's life, the user can use the shading stickers provided to cover the indicator light to block out the bright light.

9. Description of the Best Use Situation

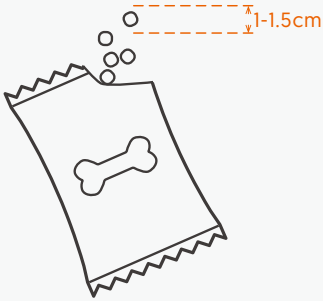


9.1. It is recommended to place this product at a height of about 1.2 meters above the ground, so that pets at home will not easily touch it, and it is also the best viewing angle of the camera.



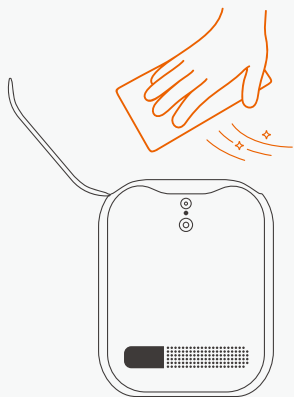
9.2. For the first-time installation, please choose whether to mount the device on the wall according to the specific situation of your home. If you choose to mount it on the wall, you can use the wall hook included in the package and install it according to the diagram in the "Accessories Instructions", that is, align the hook slot with the wall hook and fix it.

10. The Best Snacks Recommended



10.1. It is recommended to buy pet snacks with a size of 1-1.5cm, such as biscuits, jerky, freeze-dried and so on.

11. Cleaning Recommendations

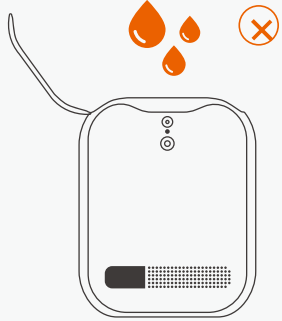


11.1. If you need to clean the snack granary, please open the silicone cover, and it is recommended to wipe it slowly with a wet paper towel.

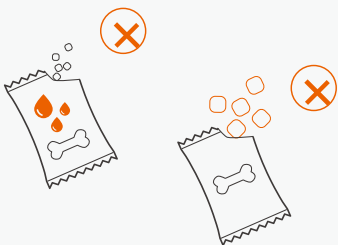
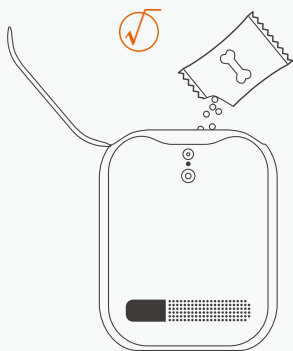
12. Precautions



12.1. If you have already configured the network for your device before and you need to pair it with a new WiFi due to site relocation or WiFi change, please press and hold the button on the right side for 5 seconds. When you hear the sound "Device has been reset", the device will start to reset the system. After the system restarts, you will hear the sound "Ready to be connected", and you can pair it with a new WiFi.



12.2. The inside of the device is not completely waterproof. Do not flush the snack granary directly with liquids.



12.3. Do not use wet food, sticky pet snacks, or pet snacks that are too large, which may cause damage to the internal parts of the device.

13. Q&A

1. Can the device be flushed directly with water?

The inside of the device is not completely waterproof. Do not flush the device directly with water.

2. How can I hang it on the wall?

The wall hook is included in the package. You can find a suitable place to hang it on the wall (glass, metal surface, painted surface, white wall, etc.), and keep it about 1-1.5 meters above the ground. It is recommended to select the location first, debug it well, and then start to paste the sticker.

3. Why Can't I download the app by scanning the code?

Please go to Appstore or Google play to download the app.

4. How to repair the device after it has been paired with a WiFi?

If you have already configured the network for your device before and you need to pair it with a new WiFi due to site relocation or WiFi change, please press and hold the button on the right side for 5 seconds. When you hear the sound "Device has been reset", the device will start to reset the system. After the system restarts, you will hear "Ready to be connected", and you can repair it with a new WiFi.

5. What should I do if the QR code cannot be scanned by the device or cannot be paired?

Assuming that the device does not make the "beep" sound indicat-

ing that the device scans the QR code successfully, it is recommended to use the backup "hotspot AP connection" mode to connect it to the network [see on Page 10].

6. Why is the sound of the app so low, and I can hear the sound only through the earpiece [Android phones]?

Please check the application permissions of CENGCEM in the phone settings to allow CENGCEM to use the speaker.

7. Why does the video interface turn black and white?

When the device's light sensor detects insufficient light around it, the device automatically turns on the infrared fill light and enters the night vision mode. At this time, the video interface turns black and white. When there is sufficient light, the system exits the night vision mode, which is the color interface. It is recommended to keep sufficient light in front of the lens and avoid objects blocking out the light to prevent the system from misjudging to enter the night vision mode in a well-lit environment.

8. Why is it unable to take photos or videos?

Please check the application permissions of CENGCEM in the phone settings, and allow CENGCEM to use related permissions.

9. Why is there no response when sharing to other phones?

The sharing function is sometimes delayed, and the shared mobile phone needs to exit the app and re-enter to receive the sharing invitation.

10. Why does it keep disconnecting when sharing to other phones and show that the device is offline?

If there is no problem with the main account app, maybe the network signal of the shared mobile phone is unstable. You can use the main account to log in at the same time to temporarily solve this problem.

12. What should I do when the indicator light is flashing and the device cannot be used normally?

Please press and hold the button on the right side of the device for 5 seconds. When you hear the sound "Restore factory settings", the device will start to reset the system, and then reconnect the network.

13. How to adjust the volume of the "ding-ding" sound when the device ejects pet treats?

Please click "Device"- "Edit"- "Settings"- "Device Volume Adjustment". After clicking it, a volume bar appears, and you can adjust the volume of the "ding-ding" sound by sliding the volume bar.

14. How to modify the "ding-ding" sound when the device ejects pet treats?

Please click "Device"- "Edit"- "Settings"- "Recording Treats Ejecting Prompt Sound"- "Start Recording" to record your exclusive prompt sound on the device [the system supports recording within 5 seconds]. The newly recorded voice will overwrite the original one.

14. Disclaimer

Thank you for purchasing CENGGEN Pet-treat Camera.

Please read this entire document carefully before using the device. By using this device, you hereby signify that you have read this disclaimer and all instructions carefully and that you understand and agree to abide by the terms and conditions herein.

CENGGEN accepts no liability for damage, injury, or any legal responsibility incurred directly or indirectly from the use of CENGGEN in the following conditions:

01. Damage(s) or injuries incurred when users are drunk, taking drugs, drug anesthesia, dizziness, fatigue, nausea, and any other conditions no matter physically or mentally that could impair your ability.
02. Damage(s) or injuries caused by subjective intentional operations.
03. Any mental overcompensation caused by accident.
04. Failure to follow the guidance of the manual to assemble or operate.
05. Malfunctions caused by refit or replacement with non-CENGGEN accessories and parts, or unauthorized modification, disassembly, or shell opening not in accordance with official instructions.
06. Damage(s) or injuries caused by using third-party prod-

ucts or fake CENGGEN products.

07. Damage(s) or injuries caused by the misoperation or subjective misjudgment.

08. Damage(s) or injuries caused by mechanical failures due to erosion, aging.

09. Damage(s) or injuries caused by knowingly operating the product in abnormal conditions (such as the assembly is not completed, or the main components have obvious faults, obvious defects, or missing accessories).

10. Other losses that are not covered by the scope of CENG-CEN 's liability.



 CENG CEN

If there is any quality problem or confusion, please feel free to scan the QR code to contact us [24Hrs Online].

E-mail of After-sales Service : cengcen@afterservice.vip

<http://www.cengcen.com>