

raydrop

Feel the air of love around you.

raydrop

Humidifier



Need any help?
Please feel free to contact us and we would reply within 1 working day.
Contact Us: support@raydrop.net

TABLE OF CONTENTS

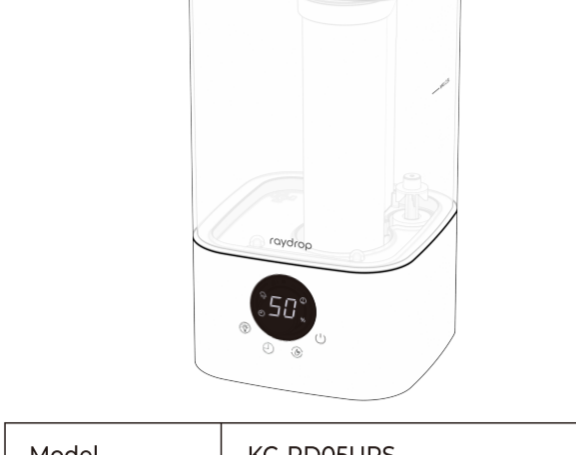
| | |
|--------------------|----|
| PACKAGE CONTENTS | 01 |
| SAFETY INFORMATION | 02 |
| SPECIFICATIONS | 03 |
| PRODUCT DIAGRAM | 04 |
| FUNCTIONS | 05 |
| GETTING STARTED | 07 |
| IMPORTANT TIPS | 08 |
| CARE & MAINTENANCE | 09 |
| TROUBLESHOOTING | 12 |
| WARRANTY | 17 |
| CUSTOMER SUPPORT | 17 |

raydrop

Feel the air of love around you.

Thank you for choosing our humidifier.
Please read the following instruction carefully before use!

Package Contents



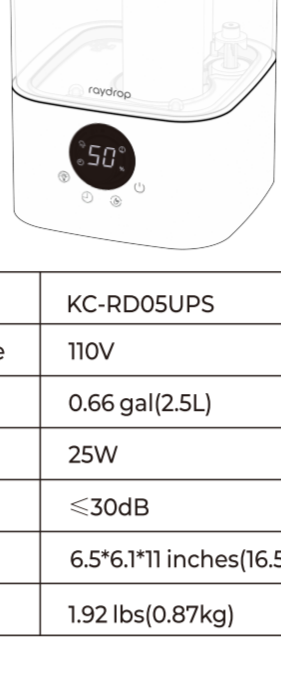
SAFETY INFORMATION

▲To reduce the risk of fire, electric shock, or other injuries, follow all instructions and safety guidelines.

General Safety

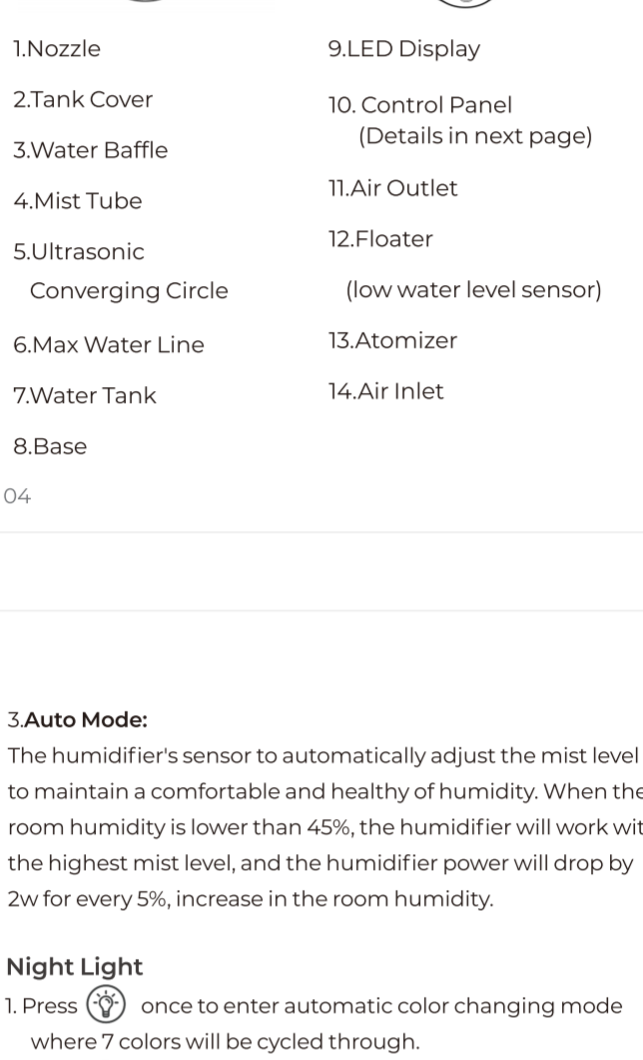
- Repair or remodelling by an unauthorized person may result in serious harm and will void the manufacturer's warranty.
- If the humidifier is damaged or is not functioning properly, stop using it and contact Customer Support immediately.
- Please always keep the humidifier out of reach of children & pet.
- Do not use the humidifier in wet environments.
- Always place the unit 12 inches (30 cm) away from the wall other appliances or wooden furniture.
- Do not handle the plug with wet hands.
- Please check the cord for any signs of damage. DO NOT use the humidifier if the cord has been damaged.
- Do not cover the nozzle while the humidifier is on and do not use without the nozzle.
- Do not move or tilt the humidifier while it is in operation.
- Do not fill the water tank with hot or boiling water.
- Do not use this product in direct sunlight or near a heat source such as a stove, heater or radiator.
- Use clean or distilled water in the tank. Hard water areas will require more frequent cleaning.

SPECIFICATIONS

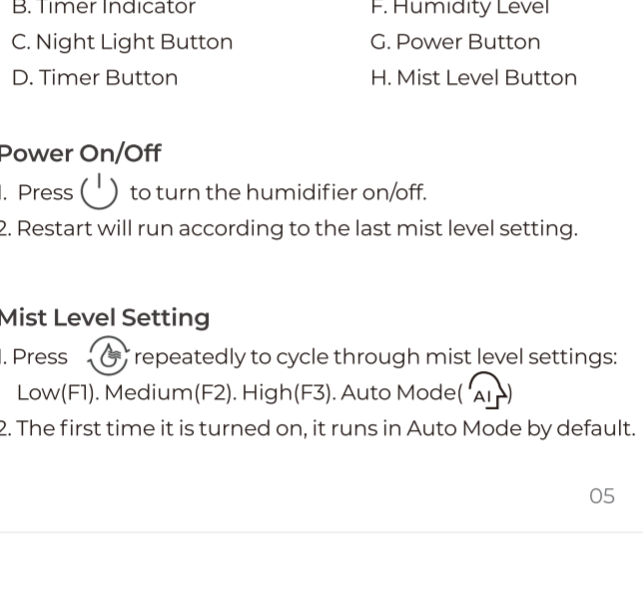


| | |
|---------------|--------------------------------------|
| Model | KC-RD05UPS |
| Rated Voltage | 110V |
| Capacity | 0.66 gal(2.5L) |
| Rated Power | 25W |
| Noise Level | ≤30dB |
| Dimensions | 6.5*6.1*11 inches(16.5*15.5*28.0 cm) |
| Net Weight | 1.92 lbs(0.87kg) |

PRODUCT DIAGRAM



FUNCTIONS



Power On/Off

- Press to turn the humidifier on/off.
- Restart will run according to the last mist level setting.

Mist Level Setting

- Press repeatedly to cycle through mist level settings: Low(F1), Medium(F2), High(F3), Auto Mode().
- The first time it is turned on, it runs in Auto Mode by default.

3.Auto Mode:

The humidifier's sensor to automatically adjust the mist level to maintain a comfortable and healthy of humidity. When the room humidity is lower than 45%, the humidifier will work with the highest mist level, and the humidifier power will drop by 2w for every 5%, increase in the room humidity.

Night Light

- Press once to enter automatic color changing mode where 7 colors will be cycled through.
- Press again to lock the current color.Keep pressing to cycle through different colors.
- Press and hold 3s to turn off the light.

Timer

- Timer ON:** Plug in, press to set 1-12 hours appointment to turn on humidifier.
- Timer OFF:** When the humidifier is working, press to set 1-12 hours appointment to turn off humidifier.
- Press until display (00) on the indicator to cancel timer function.

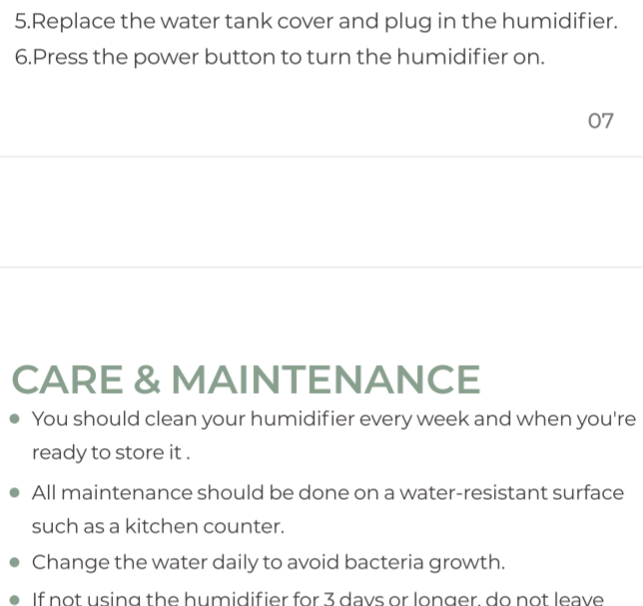
Turning Off the Display

- The digital display will automatically shut off after 180 seconds of inactivity.

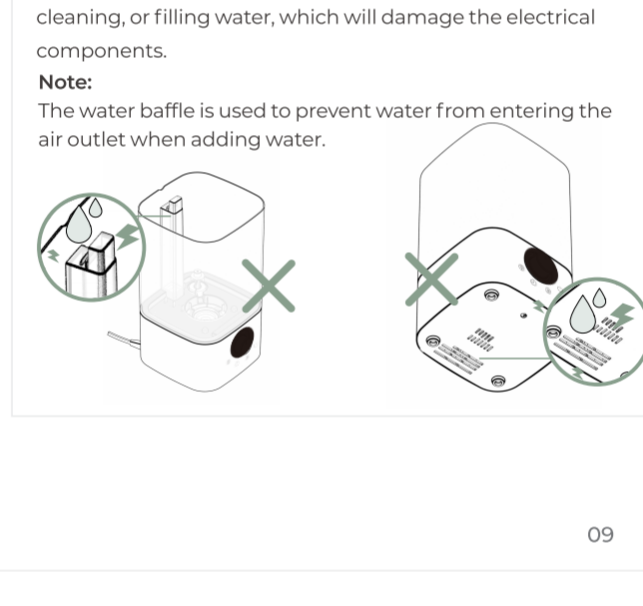
Auto Shut-off

- The humidifier shut off automatically before it runs dry. It is designed for safety in case the humidifier over heats.

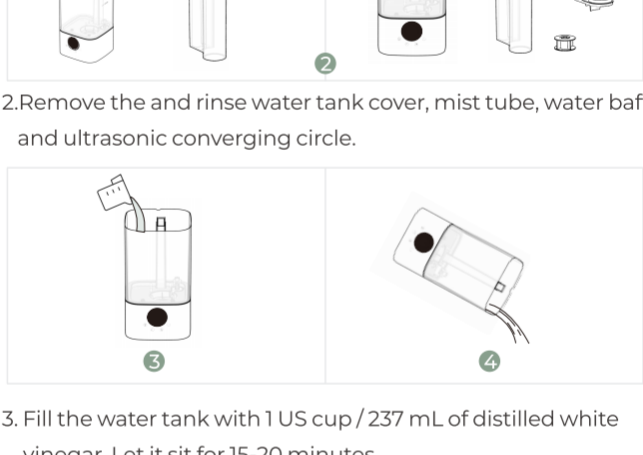
GETTING STARTED



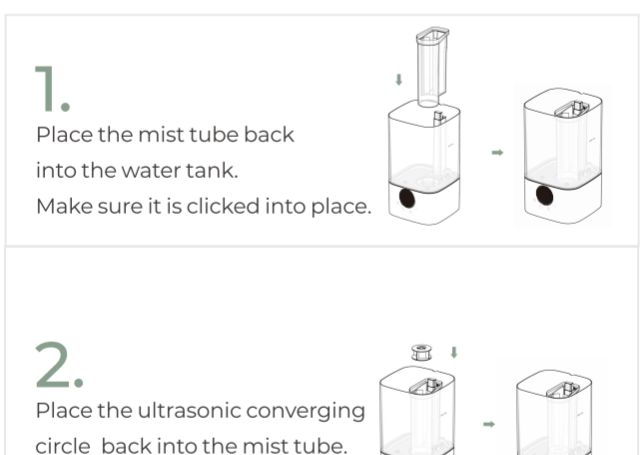
- Put the machine on a flat platform, and remove the water tank cover.
- Fill the tank with room-temperature water(purified or distilled water is recommended).
- DO NOT fill humidifier above the max line.



IMPORTANT TIPS



- DO NOT fill humidifier above the Max Line. This can cause little or no mist and damage the humidifier.
- Please always place this humidifier on a firm, flat & water-resistant surface at least 2-4 feet above the floor where the most airflow is. Placing a humidifier in a corner, on the floor, or near a wall where get less airflow, will get localized higher humidity levels but the rest of the room will still feel dry.



- It is not recommended to place this humidifier directly on wood furniture or floor, because the locally high humidity levels may wet the surroundings. Please put a tray underneath the humidifier if you place the humidifier on a non-waterproof surface.
- Place this product on cloth or carpet that may block air inlet. Attention to whether the mist output of the humidifier is affected if you do that.

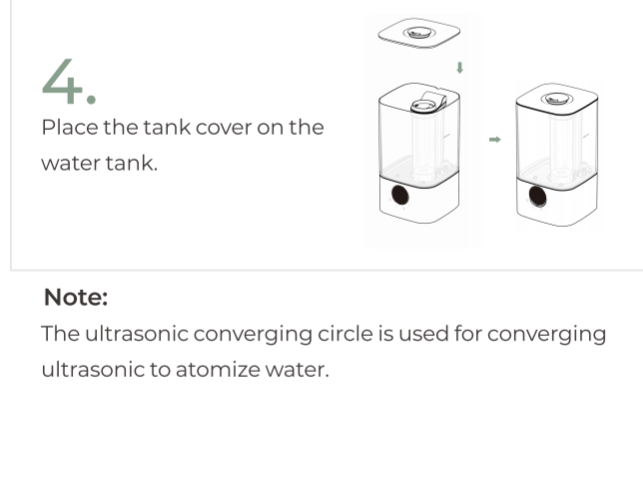
CARE & MAINTENANCE

- You should clean your humidifier every week and when you're ready to store it.
- All maintenance should be done on a water-resistant surface such as a kitchen counter.
- Change the water daily to avoid bacteria growth.
- If not using the humidifier for 3 days or longer, do not leave water inside. Clean and dry the humidifier instead.
- Distilled or purified water is recommended to fill the humidifier. In some areas, water is richer in minerals. The humidifier won't instantly go haywire if you do use tap water, but in the long term will cause scale and you need to maintain it more often.

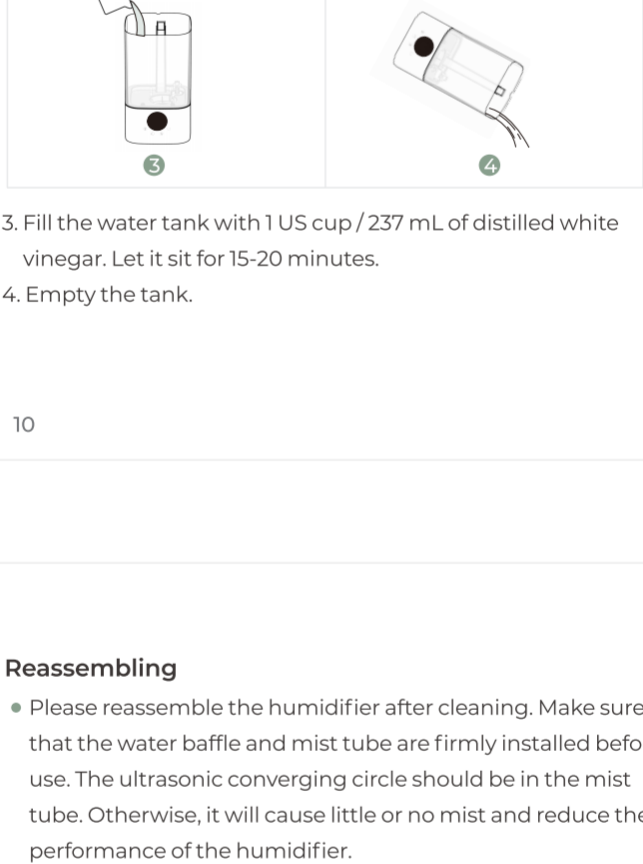
CAUTION

- Please avoid the water into the air outlet and air inlet while cleaning, or filling water, which will damage the electrical components.

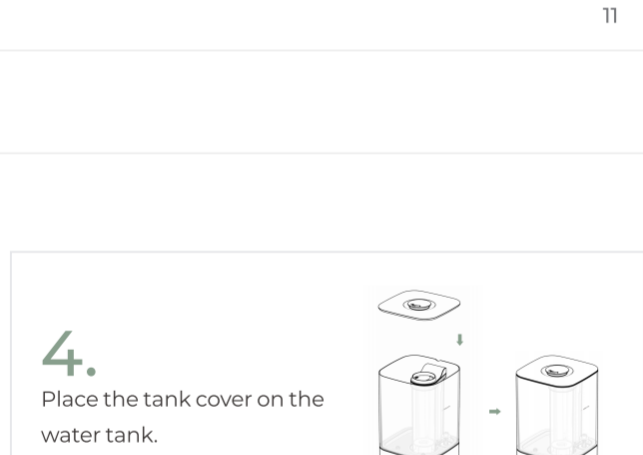
Note:
The water baffle is used to prevent water from entering the air outlet when adding water.



Cleaning & Descaling

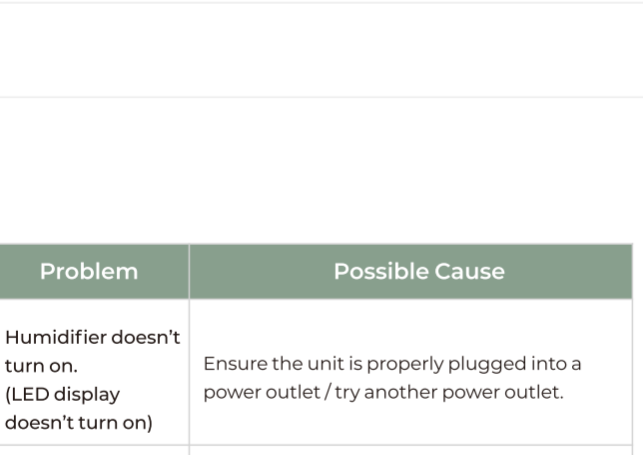
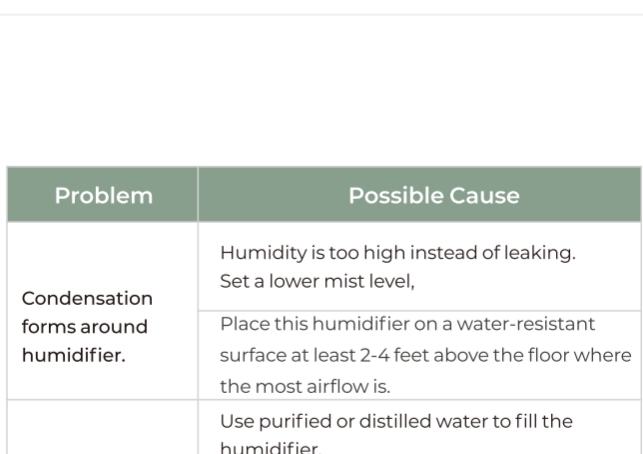
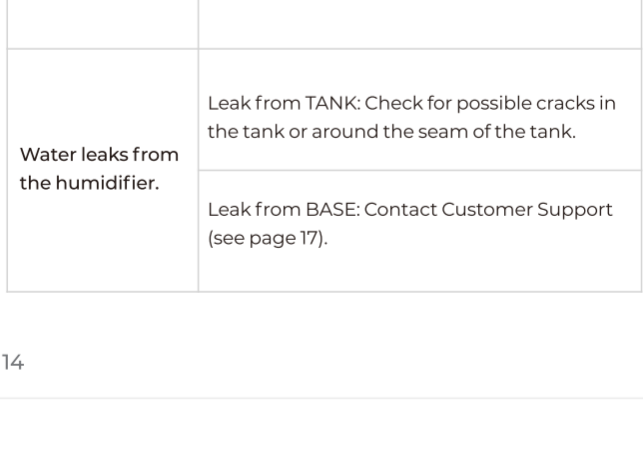
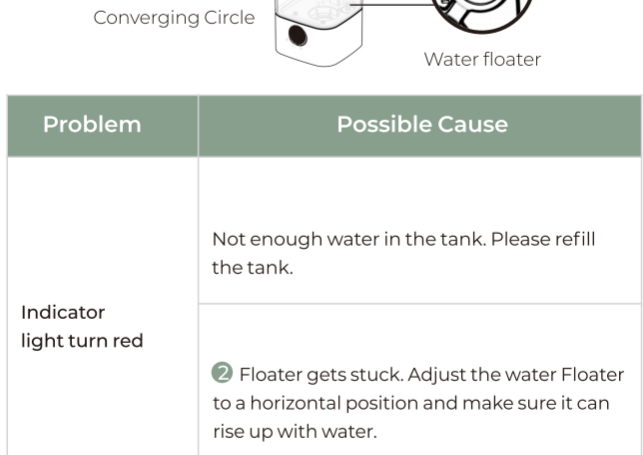


- Turn off and unplug the humidifier. Empty the tank.
- Remove the and rinse water tank cover, mist tube, water baffle and ultrasonic converging circle.
- Fill the water tank with 1 US cup / 237 mL of distilled white vinegar. Let it sit for 15-20 minutes.
- Empty the tank.



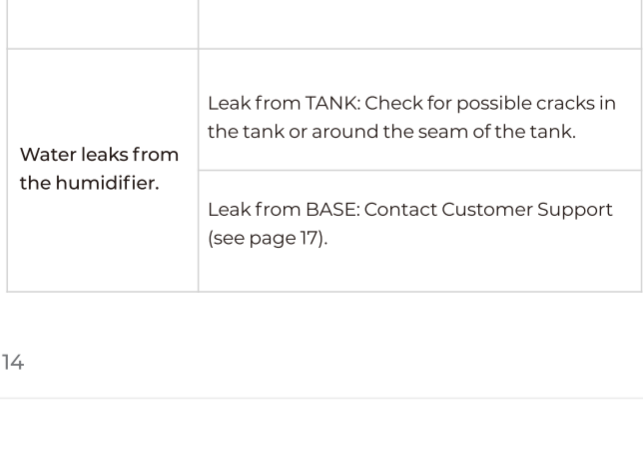
Reassembling

- Please reassemble the humidifier after cleaning. Make sure that the water baffle and mist tube are firmly installed before use. The ultrasonic converging circle should be in the mist tube. Otherwise, it will cause little or no mist and reduce the performance of the humidifier.



Note:
The ultrasonic converging circle is used for converging ultrasonic to atomize water.

TROUBLESHOOTING



| Problem | Possible Cause |
|----------------------------------|--|
| Indicator light turn red | Not enough water in the tank. Please refill the tank. |
| | Floater gets stuck. Adjust the water Floater to a horizontal position and make sure it can rise up with water. |
| Water leaks from the humidifier. | Leak from TANK: Check for possible cracks in the tank or around the seam of the tank. |
| | Leak from BASE: Contact Customer Support (see page 17). |

| Problem | Possible Cause |
|---|---|
| Humidifier doesn't turn on. (LED display doesn't turn on) | Ensure the unit is properly plugged into a power outlet / try another power outlet. |
| | Make sure the mist tube is clicked into place. |
| Littel or no mist comes out | Make sure the ultrasonic converging circle is in the mist tube and floating on the water. |
| | Make sure the water of tank doesn't exceed the max line. |
| | Exit auto mode and change to high mist level(F3). |
| | Mineral buildup on the atomizer. Clean atomizer (see Cleaning & Descaling, page10). |
| | Make sure the air inlet on the bottom of the base is not blocked. |
| | Make sure the nozzle is not blocked or clogged. |
| | Make sure the humidifier is on a level surface. |
| | Water in unit is too cold: Replace with cool water. |

Condensation forms around humidifier.

- Humidity is too high instead of leaking. Set a lower mist level.
- Place this humidifier on a water-resistant surface at least 2-4 feet above the floor where the most airflow is.

White dust appears around the humidifier.

- Use purified or distilled water to fill the humidifier.
- Avoid using water with high mineral content.
- Clean the humidifier (see Cleaning & Descaling, page 9).

Humidifier produces an unusual smell.

- Clean the water tank and base chamber (see Cleaning & Descaling, page 10).

WARRANTY

This humidifier comes with an 1 Year Warranty that begins on the date of purchase.

Raydrop will replace any product found to be defective due to manufacturer flaws based on eligibility.

This warranty is void if the defect is due to any damages, losses, or inconveniences caused by equipment failure by the user negligence, abuse, or use noncompliant with the user manual or any additional safety, use, or warnings included in the product packaging and manual.

CUSTOMER SUPPORT

If you encounter any issues or have any questions regarding your new product, feel free to contact our helpful the Customer Support Team.

Contact Us:
support@raydrop.net

*Please have your order ID ready before contacting Customer Support.