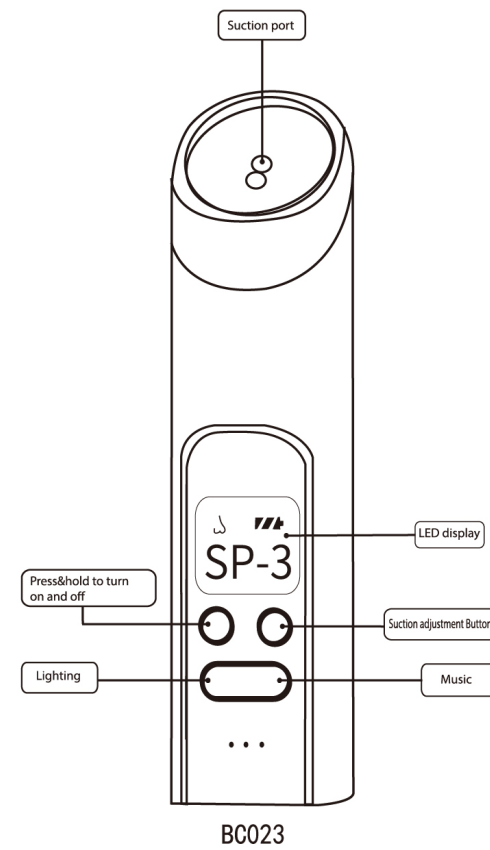


Product instruction



BC023-A-G- 7/11/2022

Heartfelt Thank you

Thank you so much for purchasing from us and placing your trust in our brand.

Growsy - Parent's best helper. Growsy committed to creating modern and thoughtful baby products that let parents enjoy the parenthood. We are always passion ate and devote to making the ideal products that show love and care. Customer satisfaction is our first priority.

For any product issue, please don’ t hesitate to contact us.

service@growsyofficial.com  
Or SMS GROWNSY to (833)524-0498

We will go above and beyond to resolve any customer issue within 24 hours.

Thank you again for your custom, and we truly hope you love your new nasal aspirator as much as we do.

Best Regards,  
Randell  
Founder of GROWNSY



Important Warning!

\* The nasal aspirator can NOT be turned on while charging.

1.Never allow snot collected exceed 1/2 of entire storage capacity! Otherwise snot will overflow!

2. Turn off device RIGHT AFTER snot sucking finished to avoid mucus back flow

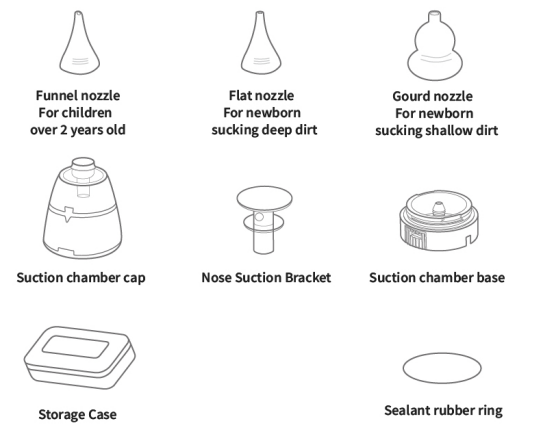
3.If liquid enter machine remove storage chamber then run machine for 5-10 minutes to drain liquid entered the motor .Wipe away stains afterwards.

4. Keep storage chamber and device CLEAN and DRY after use

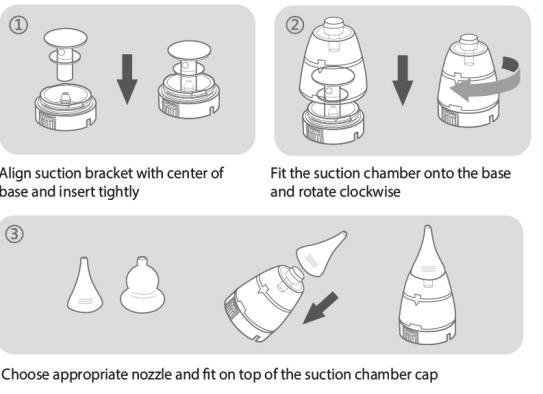
5. To keep the battery healthy, charge the battery to 100% every two months if you do not need to use it for a long time

6. Please ONLY use 5V adapter, voltage over 5V can NOT charge the device

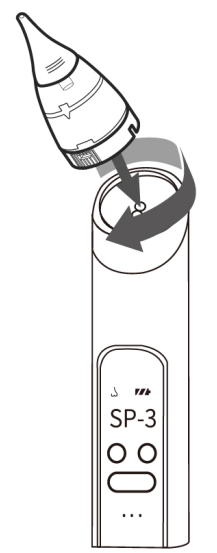
Component description



Operation of sunction chamber



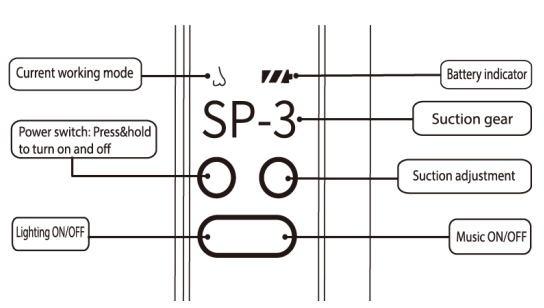
Connect the Suction chamber to the main body



Insert the assembled suction chamber set into the suction port of the main body, rotate it clockwise to ensure it fits tightly. Make sure it will NOT fall off in any angle.

Note:  
Suction will be weak if the sealant rubber ring falls off. Please check whether the sealant rubber ring around the suction chamber base works well. Fit it tightly before screwing the suction set into the suction port.

Explanation of settings



Power: Press&hold to turn on and off

Nose sucking mode

Suction adjustment: There are three levels, the suction power increase from SP-1 to SP-3 level in turn. Short press to switch level

Light: The light is off by default, press the button to turn on the light, then press to turn it off

Music: The music is off by default, press once to turn on the music, press again to amplify volume, press third time to turn off music

Battery Indicator will flash when lack of power

Note :

- ⚠ Nasal aspirator can not turn on while charging. please use while not being charged.
- ⚠ Do not rinse or soak main body
- ⚠ Do not charge with voltage over 5V adapter, it’ s not accepted

**\* Turn off device RIGHT AFTER snot sucking finished to avoid mucus back flow**

**Tips: Never allow snot collected exceed 1/2 of entire storage capacity! Otherwise snot will overflow!**

SPECIFICATIONS	
Item name	Electric Baby Nasal Aspirator
Model	BC023
Power Supply	3.7V
Input voltage	5V 1A
Usage time	Full charge lasts 90 min
Material	ABS+food grade PP Material
Certification	FCC, CE, ROHS, REACH, WEEE, LFGB Made in China

Precautions ( Please read that carefully before use)

The gourd-type silicone nozzle is suitable for sucking shallow dirt, and the flat and funnel nozzle is suitable for sucking deep dirt.

It's easier to suck out the nasal mucus if the suction tip is close to the nasal cavity, cause low pressure will be formed if air cannot get in.

Please always pay attention to the nasal mucus storage chamber during use. If there is too much nasal mucus, it may overflow into the suction port which may cause malfunction of product. In this condition, please turn off the machine and clean it in time. You can use a cotton swab to dry the nasal mucus from the suction port. If the suction port has sucked a lot of nasal mucus, please be sure to shake it out or turn on the device to strong suction mode to let snot inside be sprayed out. ( with suction chamber removed)

Please remove the suction chamber before cleaning. It is forbidden to immerse the product. The product is not waterproof but the silicone nozzle can be sterilized in boiling water.

WARRANTY & CUSTOMER SERVICE

GROWNSY strives for user friendly products for newborn and household items. We aim not only to create a product, but also an item that is filled with care love from us to our customers. If you have any issues at all, please contact us directly **service@growsyofficial.com** and we will help you out.  
**Or SMS GROWNSY to (833)524-0498**



REGISTER YOUR FREE WARRANTY

At GROWNSY we only use the highest quality products standard - but please don’ t forget to register for your FREE one year warranty just in case...

www.growsyofficial.com/warranty

