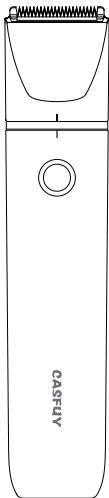



Pet Trimmer

User Manual



*Read the manual carefully
before using this device*

Any questions, connect us with

✉ support@casfuy.com  @CASFUY

Package Contents



Pet Trimmer



Compact Head



User Manual



Micro Usb
Charging Cable

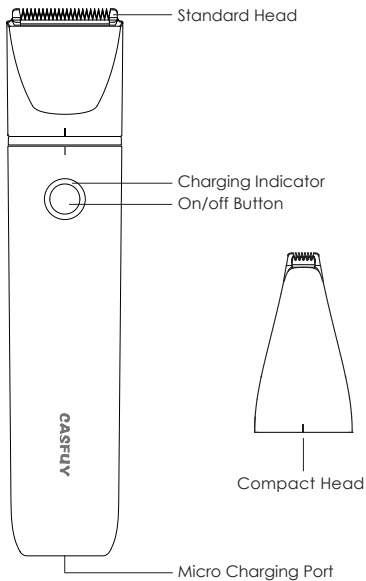


Lubricating Oil



Cleaning Brush

Product Diagram



Cautions

Do not disassemble the product without authorization.

Do not plug or unplug the power supply with wet hands.

This product and its accessories are not toys. Please keep them out of the reach of children.

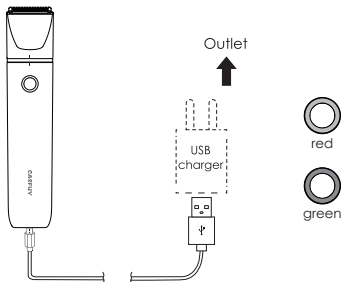
If it's not used for a long time, please charge the product every 3 months.

Fully charge the product for about 1.5 hours before the first use. After 3 to 4 times of fully charge and discharge, the battery capacity will reach the best condition.

This product is only suitable for trimming pet hair, please do not use it for other purposes; do not trim when hair is wet, dirty, knotted.

Charging method

1. Connect your device to the USB cable that comes with it.
2. Plug into one of these power sources: Wall power outlet, Computer, laptop, power bank, etc.
3. The indicator will flash RED light when charging.
4. When the indicator becomes solid GREEN, it means the product is fully charged.

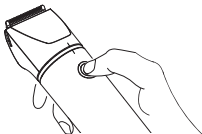


※Note:

- 1.If you use power adapter to charge, please make sure the adapter's output is not over 5V.
- 2.It's normal to generate some heat while charging and using the device.

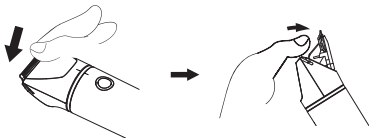
How to turn on/off the device

Short press the ON/OFF Button to turn the device on or off.



How to remove and attach the cutter head

1. Use your thumb to press down the edge of blade to remove the cutter head.



2. Align the cutter head with the device, and press, you will hear a clicking sound when done correctly.



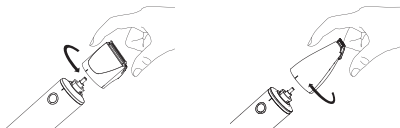
How to change the two different cutter heads

Detaching method

Rotate counterclockwise to detach the cutter head.

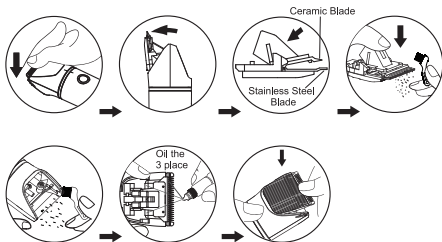
Installation method

Rotate clockwise to install the cutter head.



How to clean and maintain the blade

1. Turn off the device and remove the blade, then use the brush to remove any remaining hair from the trimmer.
2. Oil the blade very slightly before and after every use to keep it from friction and rust.



How to trim the pet



1.Clean and dry the dog.



2.Use a steel comb to comb the knotted hair.



3.Cut the knotted and longer hair.



4.Get your dog used to the device first, then do the trimming.

Important Tips

1. If your dog is uncomfortable with you touching their feet, then instead gradually get your pooch used to that feeling. For example, touch a dog's feet without using any grooming tools. And reward the dog with treats and praise for allowing you to hold and massage the paws.
2. Go slowly and be careful. Because working so close to your dog's paws means the dog will be sensitive, and there's a chance you may cut the pads of a dog's feet.
3. Hair should be level with a dog's pads or just slightly below the pads. Do not cut all the hair away, though, because it protects the skin between the paw pads.

Question: Will this work on tangled pets' hair directly?

Answer: No. Please give your dog a bath, then dry off completely and brush dog hair. Ensure that there are no mats, tangles, or debris. Otherwise, dirty hair will be stuck in the clippers.

Question: How loud is it? My dog gets scared easily.

Answer: The noise is less than 50dB. It is quieter than most of the others. You can turn clipper on and let the dog become familiar with the clipper before using it. Offer plenty of treats or praise if your dog is anxious or nervous. This is very helpful.

Question: Is the device waterproof?

Answer: Yes, the pet trimmer is IPX7 waterproof. It can be washed under water.

Question: Will the blade become dull?

Answer: Frankly speaking, the blade is consumable indeed. Blade maintenance is very important. And you also can change a new blade when necessary.

Warranty information

Any defects in regular operation, users can enjoy a one-year free warranty at the shop where they purchased it by presenting their warranty card.(Battery warranty period: 6 months,from the date of purchase)

Not included in the warranty

1. Cutter heads and lubricating oil are consumable,excluded in warranty.
2. Any defective products caused by artificial damage will not be covered.
3. If an unauthorized person damages the unit while attempting to modify or repair the device, the warranty is invalid.
- 4.We are not responsible for repair and replacement costs caused by improper maintenance by users.
5. Any second hand or resold products are not covered in warranty.

We reserve the right to find any damaged parts or accessories during replacement and repair.

Please show the warranty card and purchase invoice when this product needs to be warranted.

Product name	Pet Trimmer	Warranty period
model	EC21	1 year warranty from the date of purchase
Purchase date	Year month day	Year month day

**Unleash Your Pet's Beauty
with Our Expert**

Made in China

**UK
CA**

FC

CE



装订方式	骑马钉	尺寸	70mm*100mm	颜色	单色
名称	EC21-中性说明书	材质	128g双铜，单色印刷+印哑油	版本日期	2023年02月25日