

Contents

English 01-07

PHYLIAN
Sonic Electric Toothbrush

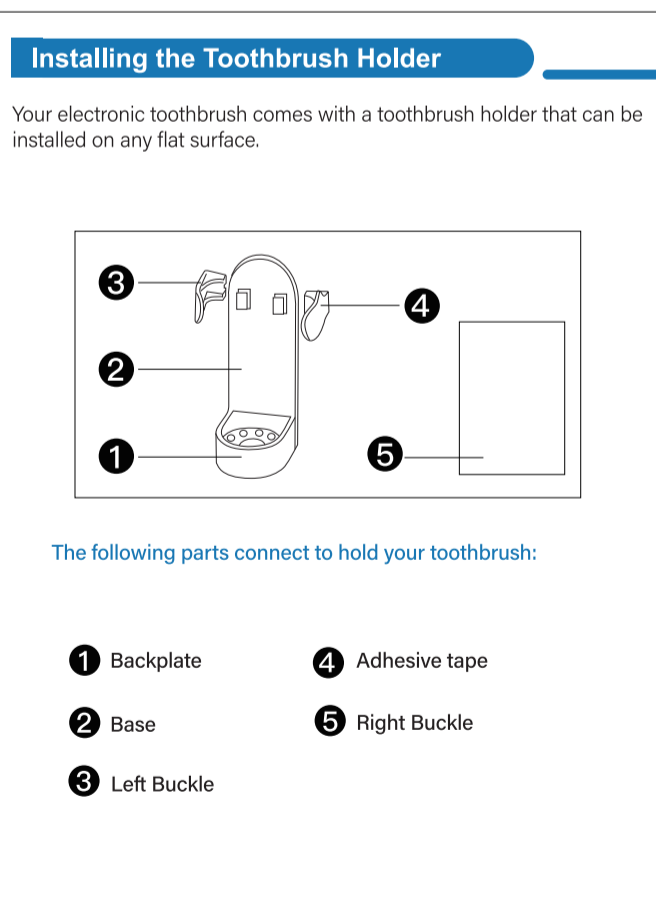
Thank you for choosing the PHYLIAN Oral Care Series HH06008 Sonic Electric Toothbrush. For outstanding performance and oral health, please read this manual to master the correct use of your toothbrush. Please keep this manual for future reference.

Warm Reminder: It will take 3-5 days to get used to the new electric toothbrush for users. If you have any questions with the product you could feel free to contact us.

Packing List

Your Electric Toothbrush includes the following

Electric Toothbrush *1	Brush Heads *6
Travel Case *1	Charging Cord *1
Toothbrush Holder *1	User manual *1



Warning English

- Use this product only for its intended use, as described in this guide.
- This product uses a built-in Lithium battery. To avoid overheating, fire, or explosion, keep away from extreme heat. Before discarding, remove the battery and safely dispose of it.
- Recommended use for adults and children ages 8 and over.
- Young children should be supervised when using this product.
- This product is not suitable for people with pacemakers or other internal medical devices.
- People undergoing oral/dental treatments should consult their dental professional before using.
- Do not soak the body of the toothbrush in water for an extended time; it may be rinsed under running water, then dried.
- To avoid oral infection, do not share brush heads with others.
- Only use brush heads recommended by the manufacturer.
- Keep out of reach of small children to avoid being used as a toy.
- Disassembling this product will void your warranty.

01

Features and Brushing Modes English

- ON/OFF/MODE Selection**
ON/OFF: Press to power on/ Press and hold to power off.
MODE Selection: Once powered on, press again to select the desired mode.
- Function Indicator**
 - Whitening mode: Use 12 times a week for stains and whitening. Uses a higher frequency than Cleaning mode.
 - Cleaning mode: Use for daily cleaning and maintenance.
 - Sensitive mode: Use on sensitive teeth and gums.
 - Polish mode: Use 12 times a week for a glossy finish. Uses a pulsing frequency.
 - Massage mode: Use 12 times a week to strengthen teeth and gums. Uses a wave frequency.
- Charging Indicator**
 - Green: Charged
 - Red: Low Power/Charging
- Charging Port**
Charging cord plugs into the bottom of the unit. Charging time: 4 hours

02

Attach Toothbrush Head English

With the toothbrush head facing the power button, slide the brush head onto the white shaft at the top of the electric toothbrush until it clicks into place. There will be a slight gap between the brush head and handle to allow for normal vibrations during use.

Detach Toothbrush Head

Pull the brush head up and off the top of the electric toothbrush.

Power On/Off Turn your unit on by pressing the power button. The mode indicators will light up when powered on, allowing a mode to be selected. Turn the toothbrush off by pressing and holding the power button for 0.5 seconds.

Mode Selection When powered on, press the power/mode button to select one of the 5 modes: Whitening, Cleaning, Sensitive, Polish, or Massage. The mode can only be set when the unit is powered on.

03

Brushing Your Teeth English

- Once the toothbrush is attached, squeeze some toothpaste on the brush head.
- Put the toothbrush into your mouth and position the bristles against the gum line at a 45° angle.
- Power on the unit and select a mode (Whitening, Cleaning, Sensitive, Polish, or Massage).
- Dental professionals suggest that you mentally divide your mouth into four sections and brush each area for about 30s each. Move the toothbrush slowly, back and forth, over each area, letting the brush do its job. There is no need to press the brush hard against the teeth. You may choose to change modes while you brush.
- When you are finished brushing, press and hold the power button for 5s to turn the power off.

For the best dental health, we recommend replacing your brush head every 3 months.

04

Using the Travel Case English

You can use your travel case for daily storage of your electric toothbrush or just when traveling. It keeps all pieces together, so nothing gets lost.

Open the case using two hands:

- Hold the case with one hand, placing your thumb in the middle of the box. Gently press on the lower half of the box with your thumb.
- With your other hand, lift the top of the case.
- Place the toothbrush body and up to two brush heads into the case for storage.

Note: The toothbrush must be placed in the correct position for the case to close. If you have troubles closing the case, try flipping the toothbrush around, then close again.

05

To connect the toothbrush holder: English

- Connect the left and right buckles to the notch at the top of the backplate. Slide each one on until it cannot move any further. When both are installed they will face each other.
- Slide the base down onto the notches at the bottom of the backplate.
- Remove one side of the adhesive tape and attach it to the back of the backplate. Press down the tape to remove any air bubbles and ensure a good seal.
- Now the toothbrush holder can be attached to the wall. Make sure the area is clean and dry before sticking the adhesive tape to it. Peel the backing of the adhesive tape and press it onto the wall. Let it sit unused to 24 hours for proper curing. (For best results, do not stick the adhesive on plaster, wallpaper or a painted wall).

06

Charging Reminders English

- When using the product for the first time, be sure it is fully charged.
- If the device is left unused for an extended period of time, we recommend fully charging it before storage and again prior to use.
- Connect the charging cord. Connect the charging cord into the unit and the USB plug into an adapter, power bank, or other unit with a USB interface. The unit may be slightly warm while charging. This is normal.

Battery Indicators:

- When the battery power indicator is red, the battery is low. Charge the unit to avoid draining the battery completely.
- When fully charged, the battery power indicator is solid green.

Charging environment: 5-35 °C. The body may be slightly hot when charging, which is normal.

Cleaning

- Do not immerse the unit into water for a long period of time. It is ok to wet the unit to clean it, and then completely dry it. Unplug the charging cord before cleaning.
- Use a clean, soft cloth to wipe the exterior of the unit after use.
- Use water or a gentle detergent to clean the unit. Dry completely after cleaning.
- Toothbrush Head:** Remove the toothbrush head from the unit and clean with warm water. Dry the brush and reattach it to the unit. We recommend replacing the brush head every 3 months.

07