

NICE TO MEET YOU!

Thank you for purchasing the Ditoo, your best desktop accessory from Divoom. With Ditoo, you can create pixel art design and interact with the largest pixel art community, as well as to enjoy the good tune from our speaker. Along with the companion application-Divoom Smart, Ditoo is capable of many daily functions, and learn more through software updates.

WHAT'S INCLUDED?

Ditoo
User manual
USB Type-C charging cable

Thank you for purchasing a Divoom product! Please read this manual carefully. You can also visit www.divoom.com to learn more about our other products!

Due to the nature of the technology product, the information on this manual is subject to change without prior notice. If you have any questions, please contact the Divoom customer support.

PRODUCT DETAILS

1. "M" button

Press: Enter/Exit menu functions

Hold: Turn ON/OFF keyboard backlight

2. "+" Button

Press/Hold: Increase volume

3. "⊗" button

Press: Change lighting function

Hold: Change lighting effects

4. "←" button

Press: Previous track

Hold: Decrease brightness

5. "-" button

Press/Hold: Decrease volume

6. "→" button

Press: Next track

Hold: Increase brightness

7. Lever

Pull: Play/Pause/Answer/End Call

Hold: Active voice memo/Reject Call

8. Charging indicator

9. TF card slot

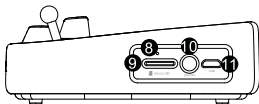
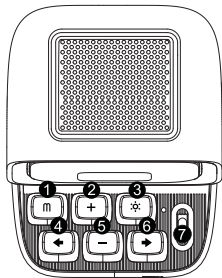
10. Power button

Press: Show battery status

Press twice: Disconnect Bluetooth connection

Hold: Power ON/OFF

11. USB type-C Charging port



HOW TO OPERATE DITOO ON-SCREEN MENU?

1. Press “M” button to activate menu system
2. Press “← →” to switch between Audio/Game/Alarm/Tools/Draw
3. Pull the lever to confirm selection, and press “M” button to exit current menu.

In Audio, rotate between Bluetooth/SD

Pull the lever to confirm selection, then play audio with the control buttons

In Game, choose between Tetris/Slot machine/Dice/Magic 8/Blocks/Flap bird/Snake/Racing

Use “← →” to switch games, and pull the lever to confirm selection. Press ☒ button to exit.

In Alarm, press “+ -” to change time value, and pull the lever to confirm and activate alarm

Press “M” button to delete & exit menu. For more info, see below section on alarm setting

In Tools, choose between Scoreboard/Stopwatch/Noise meter/Timer alert

Use “← →” to switch tools, and pull the lever to confirm selection. Press ‘M’ button to exit.

In Draws, pull the lever activate the Draw function

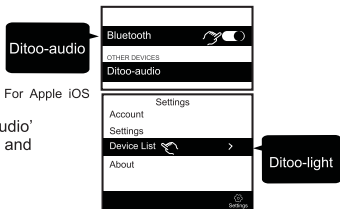
1. Use “← →” to switch designs, and pull the lever to confirm selection
2. Use “+ -” “← →” to move the cursor, and pull the lever to fill in the color in the grids.
3. Press lighting button to review the design hint, or press “M” button to exit

HOW TO CONNECT THE SPEAKER?

Download mobile application

Search ‘Divoom’ application for both iOS and Android systems.

*Please grant all privilege requests prompted by the APP.

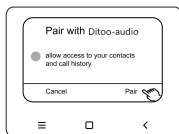


For Apple iOS system

search and connect the ‘Ditoo-audio’ in Bluetooth settings, then search and connect the ‘Ditoo-light’ in the Divoom Smart APP.

For Android system

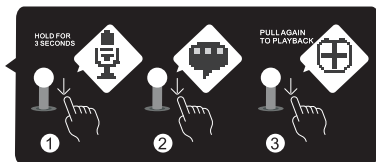
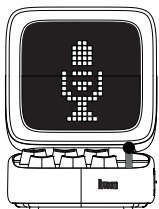
search and connect the 'Ditoo-light' or 'Ditoo-audio' in APP or Settings



FOR ANDROID

HOW TO RECORD A VOICE MEMO (UP TO 60 SECONDS)?

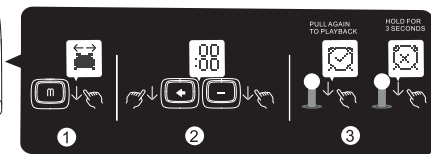
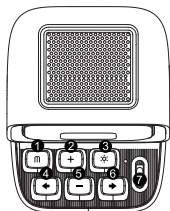
1. Pull and hold the lever to start recording a voice memo
 2. Pull the lever to end the recording, pull it again to play the voice memo
- *The message will be erased after being played.



HOW TO SETUP A MANUAL ALARM?

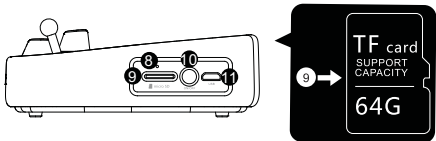
1. Press the "M" button and switch to the alarm setting menu
2. Pull the lever to confirm and enter alarm settings
3. Press "+ -" to change time value, pull the lever to confirm settings
4. Pull the lever to confirm/activate alarm. To delete alarm, pull and hold the lever

*Only one manual alarm is available. For more alarm options, please use the mobile APP.



HOW TO PLAY THE TF CARD AUDIO?

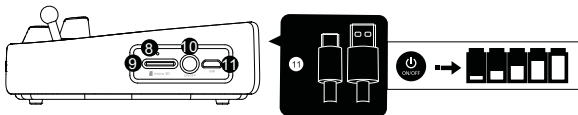
1. Insert the TF card, and the audio should start to play automatically
 2. Press the "M" button, and pull the lever to select audio option
 3. Switch to the 'SD card', and pull the lever to confirm selection
 4. Play the audio via the control panels (play/pause/volumes/change songs)
- * MP3 is the only supported file format. The maximum supported capacity is 64GB



HOW TO CHARGE?

1. Insert the USB Type-C cable into the speaker
2. Press the power button if you want to check the battery percentage
3. When charging, the indicator light will lit. Upon 100% charged, the indicator will turn off.

*Please use a 5V-2A charger, and do not use higher voltage charger.



PRODUCT SPECIFICATION

Dimension (mm) :90X113.8X121.2MM

Weight :505g

Speaker size : 45mm

Output power : 10W

Frequency response : 80-20KHz

Signal-to-noise ratio : 80dB

Playback time : 8hrs

Battery capacity : 3000mAh

Battery voltage : 3.7V

Battery charge time : 4hrs

Charge : 5V-2A

Wireless range : 10M/33ft


Bluetooth compliant : 5.0

SAFETY GUIDE

Please read the following instructions carefully:

- Please follow our product installation and operation instructions.
- Always place the speaker on a smooth and stable surface.
- Please place the speaker on an open area for the best sound quality. Do not block the surroundings of the speaker.
- Do not push any objects into speaker vents or slots. Do not apply any great force on the speaker.
- Please keep the speaker in a room temperature environment. Do not place the speaker near any heat sources (such as radiators, heat registers, stoves, fire place, or direct sunlight). Do not place the speaker near any open flame source.
- Do not attempt to service the speaker by yourself. Always refer to the instructions by qualified service personnel.
- To avoid the risk of electrical hazard, do not expose this speaker to wet surface.

DECLARATION OF CONFORMITY:

 This device meets the essential requirements of the following Directive 2014/53/EU of the European parliament of the council of 16 April 2014.



The waste container symbol with the X through it on the device indicates that the device must be disposed of separately from normal domestic waste at an appropriate waste disposal facility at the end of its useful service life.

Please dispose of used batteries properly following local regulations. Do NOT incinerate. Removal of the rechargeable lithium-ion battery in this product should be conducted only by a qualified professional.

ROHS This product is in compliance with Directive 2011/65/EU of the European Parliament and of the Council of 8 June 2011 on the restriction of the use of certain hazardous substances in electrical and electronic equipment.

This device complies with Part 15 of the FCC Rules. Operation is subject to the following two conditions:

- (1) this device may not cause harmful interference, and
- (2) this device must accept any interference received, including interference that may cause undesired operation. Changes or modifications not expressly approved by the party responsible for compliance could void the user's authority to operate the equipment.

NOTE: This equipment has been tested and found to comply with the limits for a Class B digital device, pursuant to Part 15 of the FCC Rules. These limits

are designed to provide reasonable protection against harmful interference in a residential installation. This equipment generates, uses and can radiate radio frequency energy and, if not installed and used in accordance with the instructions, may cause harmful interference to radio communications. However, there is no guarantee that interference will not occur in a particular installation. If this equipment does cause harmful interference to radio or television reception, which can be determined by turning the equipment off and on, the user is encouraged to try to correct the interference by one or more of the following measures:

- Reorient or relocate the receiving antenna.
- Increase the separation between the equipment and receiver.
- Connect the equipment into an outlet on a circuit different from that to which the receiver is connected. Consult the dealer or an experienced radio/TV technician for help.

PRODUCT WARRANTY CARD

Product name		Serial number	
purchasing store		Purchasing date	
Owner name		Contact Email	
owner address			

Divoom official website:<http://www.divoom.com/>

Divoom warranty information:<http://www.divoom.com/article/detail/id/60.html>

Divoom product FAQ:<http://www.divoom.com/article/detail/id/59.html>

Divoom support Email: info@divoom.com

Divoom support contact number: 0755-29494509

Divoom repair & return address:

Shenzhen Divoom Technology Limited Corporation 1st Floor, 5th Building, XinLianHe Industrial Complex
Shajing Town, Baoan District Shenzhen City, Guangdong Province
518000 The people's republic of China

WARRANTY INFORMATION:

- 1.If you believe your product is defective within the warranty period, please bring the product back to where the product was initially purchased. Alternatively, or within any other questions or concerns, please call customer support at +0755 86290767, or contact us via email at info@divoom.com.
- 2.If within 12 (24 if required by local law) months of purchase this device or any part thereof is proven to be defective by reason of faulty workmanship or defects in materials, we will at our option repair or replace the same free of charge of labor or materials on condition that similar to the product current condition.
- 3.The sales invoice or receipt with the date and source of purchase must be presented together with the defective unit. We cannot validate the product warranty information without an invoice.
- 4.The warrant does not cover product failures which have been caused by use of accessories other peripheral devices which are not Divoom branded original accessories intended for use with the product.
- 5.The warranty does not cover product failures caused by: modification, repaired, and disassembled by any person who is not authorized by the manufacture.
- 6.The warranty is non transferable. Any defective unit or part shall become property of the manufacture.
- 7.Warranty does not cover any damage caused by misuse, drop, hit or negligent.
- 8.Customer is responsible for the return shipping charges.

Please dispose of used batteries properly following local regulations. Do NOT incinerate.

Removal of the rechargeable lithium-ion battery in this product should be conducted only by a qualified professional.

WARRANTY INFORMATION

This product is covered by a limited warranty from Divoom. For complete warranty details, visit the website

This product is in compliance with Directive 2011/65/EU of the European Parliament and of the Council of 8 June 2011 on the restriction of the use of certain hazardous substances in electrical and electronic equipment.