

FREQUENTLY ASKED QUESTIONS

Q: Does this system remove TDS?

A: This Undersink Water Filtration System cannot reduce TDS. TDS stands for total dissolved solids. It is composed of inorganic salts and a small amount of organic matter. This filter cannot lower the TDS value because it removes harmful substances while retaining minerals such as potassium, calcium, sodium, and magnesium, which are beneficial for your health.

Q: What is the filter service life?

A: Ultra High Capacity: 20,000 gallons.

Q: Where can I buy a replacement filter?

A: Please search for ICEPURE WFC5300A (or B08Q3KXS3S) on AMAZON.

Q: Do I need to flush the filter After Installation?

A: The new filter should be flushed for 5 mins to condition it. The water filter is made from coconut shell activated carbon block, less harmless charcoal residuals and fines can be found in the new filter. The flush process will remove carbon fines out of the system.

Q: What should I do if the filter(s) received is Damaged or the filter(s) is Missing?

A: Please be aware that the order was fulfilled by Amazon. Inappropriate packaging may be used which causes this situation. Please do not hesitate to contact us or amazon for replacements.

Call us: 562 273 8356



Scan for ICEPURE Under Sink Water Filter (Only replacement filter)



Scan Reorder ICEPURE Under Sink Water Filtration System

Copyright©2021-2030 ICEPURE® Water Treatment, All Rights Reserved

<http://www.icepurefilters.com/> ICEPURE® All Rights Reserved

ICEPURE®

Purer Water, Better Life

Undersink Water Filtration System

Model: WFS5300A

The replacement filter for this model is WFC5300A



Copyright©2021-2030 ICEPURE® Water Treatment, All Rights Reserved

<http://www.icepurefilters.com/> ICEPURE® All Rights Reserved

POLICY

We offer 100% Risk-Free Guarantee

1-Year Return Policy Guaranteed! Product Life Time Warranty on Every Filter Confirmed with Defects in Material and Workmanship Within Each Filter's Service Life.

We promise a risk-free shopping experience backed up with our reliable customer service and technical support team. Please be free to contact us for any question or problem.

WE WILL BE GLAD TO ASSIST YOU WITH ANY ASSEMBLY, MISSING PARTS OR QUESTIONS THAT YOU MAY HAVE ABOUT YOUR PRODUCT.



Please Email Us:

support@icepurefilters.com

Our website:

<http://www.icepurefilters.com/>

Call us:

562 273 8356



Please Scan to Contact Us at Amazon

Scan to find our promotion info on Facebook & Twitter



FACEBOOK ID: @Icepurefilters



TWITTER ID: @Icepure2016

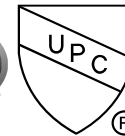
Copyright©2021-2030 ICEPURE® Water Treatment, All Rights Reserved
<http://www.icepurefilters.com/> ICEPURE® All Rights Reserved

CAUTION

DO NOT INSTALL THIS PRODUCT UNTIL YOU READ AND UNDERSTAND ALL INSTRUCTIONS. FAILURE TO FOLLOW THESE INSTRUCTIONS MAY RESULT IN PERSONAL INJURY, PROPERTY DAMAGE, OR PRODUCT FAILURE.

Certification

^This system has been tested according to NSF/ANSI 42 for the reduction of the substance listed below. The concentration of the indicated substances in water entering the system was reduced to a concentration less than or equal to the permissible limit for water leaving the system as specified in NSF/ANSI standard 42.



This WFS5300A is Certified by IAPMO R&T against NSF/ANSI 42 standard for material safety, structural integrity and aesthetic chlorine reduction, NSF/ANSI 372 standard for Lead free compliance.

How to find IAPMO Certification Information?

Step 1: <http://pld.iapmo.org>

Step 2: Select the search category: Listed Model / Additional Company

Step 3: Enter "WFS5300A" in the search box

Product Specifications

Operating Water Pressure.....	30 PSI-100 PSI
Water Temperature.....	40-100°F (Not for HOT water)
Flow Rate.....	>2.5 GPM/60 PSI (Depends on your water quality and pressure)
Filtration Capacity.....	20000 gallon
Micron Rating.....	0.5 micron

Copyright©2021-2030 ICEPURE® Water Treatment, All Rights Reserved
<http://www.icepurefilters.com/> ICEPURE® All Rights Reserved

Tools You May Need



Variable



Phillips #2 Bit Tip



Adjustable wrench



Towel



Flashlight

Out of Box Audit



Parts List



Filter Head and Filter



Inlet Hose



Outlet Hose



1/2 FIP to 3/8 Compression



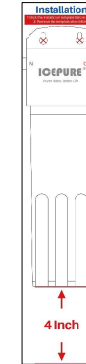
3/8 Compression to 1/2 FIP



Teflon Tape



Mounting Screw



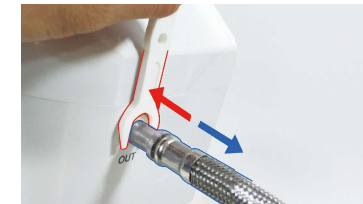
Installation Template



Quick Connect Tubing Release Tool

How to use the Quick Connect Tubing Release Tool?

It's ideal for disconnecting the hose from the fitting without hurting your fingers/Nails.



Installation Preparation

1

First, let's determine the under-kitchen compression water inlet size. You could find either a 1/2" or 3/8" OD compression inlet valve under the kitchen cabinet.

2

Please check the following Image and pick out the suitable accessories and adapters that work best with your current under kitchen layout.



3/8" Compression Outlet



1/2" FIP Outlet

3

3. For 1/2" FIP outlet valve, please get the compression hose to 1/2" FIP adapter and adapter 3/8" ready.



4

For the 3/8" OD Compression outlet valve, you do NOT need to use any of the compression hose adapters.

Installation Steps

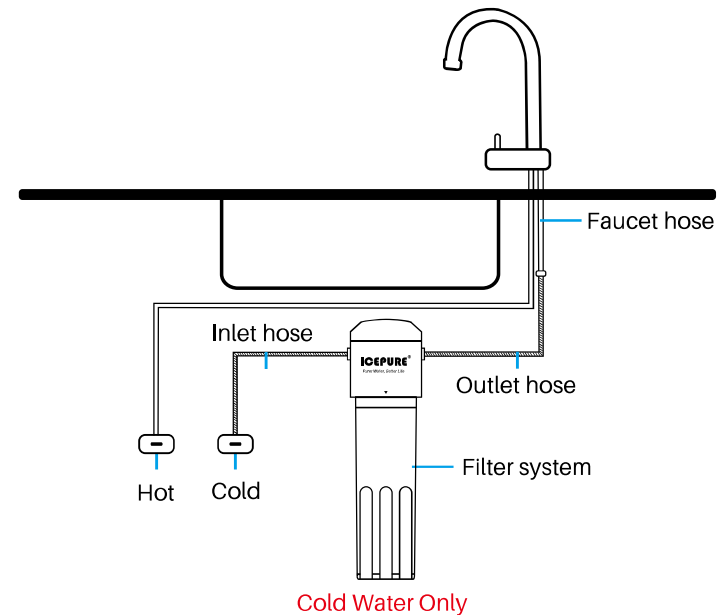


Scan to Watch the installation Video

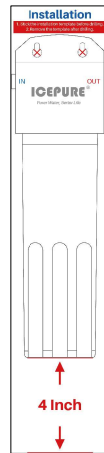
1. The quick-connect connectors can be found on both sides of the filter head. Insert the inlet and outlet water hoses as instructed; push them in until you feel a "Click" action.



2. Find the desired location to mount the water filtration system.



3. Place the installation template at the desired location with at least 4 inches of space between the bottom of the filter cartridge and the floor.



4. Drill through the holes marked on the template; leave 1/3" length of the screws outside for attaching the filter head. Remove and discard the template after drilling.



If the water inlet valve is a 3/8" compression connection, you can connect the system directly.

1. Turn off the water inlet valve; leave the faucet ON. Place a towel under your water inlet valve to catch any dripping water.



2. Disconnect the faucet hose from the water inlet valve.

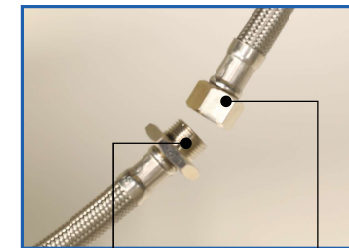


3. Connect the filtration system's inlet hose with the water inlet valve.



angle valve outlet is 3/8"

4. Connect the faucet hose with the filtration system's outlet hose to complete the set up.



outlet hose is 3/8" faucet hose

5. Make sure the faucet is turned on and then turn the water inlet valve back on to flush the new system for 5 minutes to condition the new filter.

6. Turn off the faucet to pressurize the new connected system and check for any possible leakage.



If it is a 1/2" FIP water inlet valve, please get the 1/2" FIP to 3/8" compression adapter.

1. Turn off the water inlet; leave the faucet ON. Place a towel under your water inlet valve to catch any dripping water.

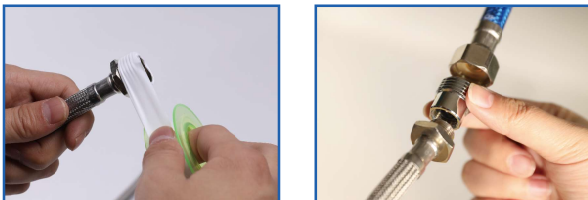


2. Disconnect the faucet hose from the water inlet valve, attach the 1/2" FIP to 3/8" compression adapter. Make sure the O ring is in position; apply Teflon tape at a clockwise direction 7 times only if needed.



3. Connect the filter system's water inlet hose onto the adapter.

4. Attach the 3/8" compression to 1/2" FIP adapter onto the filter system's outlet hose, then connect the faucet's hose. Make sure the O ring is in position; apply Teflon tape at a clockwise direction 7 times only if needed.



5. Make sure the faucet is turned on and then turn the water inlet valve back on to flush the new system for 5 minutes to condition the new filter.

6. Turn off the faucet to pressurize the new connected system and check for any possible leakage.



Tips: It is completely normal for water to spurt out due to the trapped air inside the system.

WARNING

- To reduce the risk associated with choking, keep children away during the installation of this product.
- To reduce the risk of property damage due to water leakage, this filter **MUST** be installed and maintained in accordance with the product's instructions and specifications.
- Do not use with water that is microbiologically unsafe or of unknown quality without adequate disinfection before or after the system.
- Testing results were performed under designated standard individual laboratory, the actual conditions, and performance may vary.
- Protect from freezing, remove filter cartridge when temperatures are expected to drop below 40°F (4°C).
- The filter should be used with cold water only. Do not install on hot water supply lines. The maximum operating water temperature of this filter system is 100°F (38°C).
- Do not install where water hammer conditions may occur. If water hammer conditions exist, you must install a water hammer arrestor. Contact a plumbing professional if you are uncertain how to check for this condition.
- Where a backflow prevention device is installed on a water system, a device for controlling pressure due to thermal expansion must be installed.

Filter Replacement

1. Turn about 1/4 turn to the left to release the filter, then remove the old filter.
2. Align, insert, and twist the new filter to the right about 1/4 turn to complete the filter installation.
3. Flush about 2-3 gallons to condition the new filter.

