



AIR COMPRESSION LEG MASSAGER

MODEL NO. FT-059A



USER MANUAL

SAVE THIS MANUAL

Thank you for purchasing FIT KING products.
Please read this manual carefully to ensure optimum performance and safety.

SAFETY PRECAUTIONS

Warnings

- Those with any of the following conditions or persons who are receiving medical treatment should consult the doctor before using the machine:
 - Using pacemaker or other medical devices which are susceptible to electrical interference;
 - Suffering from malignant tumors;
 - Suffering from cardiac diseases;
 - Having serious peripheral neuropathy dysfunction or sensory disturbance caused by diabetes;
 - Being unsuitable to do the massage because of traumas on the body;
- Keep it out of the reach of infants, children and people without the ability to use it independently.
- Don't use other power adapter but the original one.
- Don't scratch, damage, process, excessively bend, pull or twist the power cord of power adapter. Otherwise, it may cause fire or electric shock.
- It is not allowed to use when the power adapter dysfunctions or the plug is loose.
- Don't plug or unplug the power adapter with wet hands.
- Don't put the controller in the quilt or use the machine in high temperature condition.
- It is forbidden to remodel, disassemble or repair the machine without permission.

Cautions

- Stop using it immediately if you feel unwell. Don't use it again before consulting the doctor.
- Don't use it in the bathroom or other humid places.
- Unplug the power adapter from the socket before you clean and maintain it.
- Unplug the power adapter when you are not using it.
- Don't walk around when you are using this item or wearing the wraps.

- 1 -

FAQS

Q1: How does this product massage?

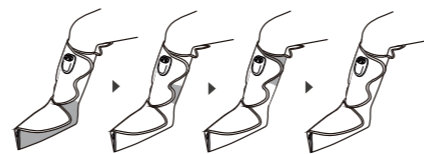
A1: The wraps will be inflated and deflated in airbags to simulate kneading and stroking of tissues like human hands. It can relax our muscles, increase circulation and relieve pain.

Q2: How many massage modes, and what's the difference?

A2: There are 3 massage modes,

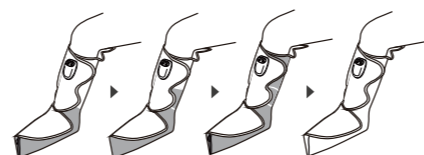
Mode 1: Sequence Mode

In this mode, the air inflated and deflated alternately from foot chamber to lower calf chamber then to upper calf chamber. Foot inflated-deflated-lower calf inflated-deflated-upper calf inflated- all deflated runs in repeat.



Mode 2: Circulation Mode

In this mode, the air inflated from foot chamber to lower calf chamber then to upper calf chamber and finally deflated. Foot inflated-lower calf inflated-upper calf inflated-all deflated runs in repeat.



Mode 3: Combination Mode

In this mode, Mode 1 and Mode 2 runs alternately.

- 2 -

Q3: What should I do if I feel the massage strength is too light or too tight?

A3: There are 3 levels of massage strength selectable via the controller, please select the intensity which is fit for you. You can also adjust the strength via changing the tightness of Velcro on the wraps.

Q4: How long should we use it?

A4: It is recommended to use it once a day (20 minutes), up to 2 times (40 minutes).

Q5: How do I know when I need to recharge it?

A5: The battery indicator light will flash in red if it runs out of battery, the device will stop working and you need to recharge it.

Q6: How should I charge it?

A6: It comes with a Type-C charging cable and can be charge via any USB devices. The battery indicator light will keep flashing until fully charged.

Q7: Can I use the device while charging?

A7: Surely you can, the massager is battery powered but you can also use while charging.

Q8: Why does the controller get hot?

A8: As we suggested, you can use it 20 minutes per time normally. If it keeps working too long, the controller will get hot, that's a normal phenomenon.

Q9: Why does the controller make sound?

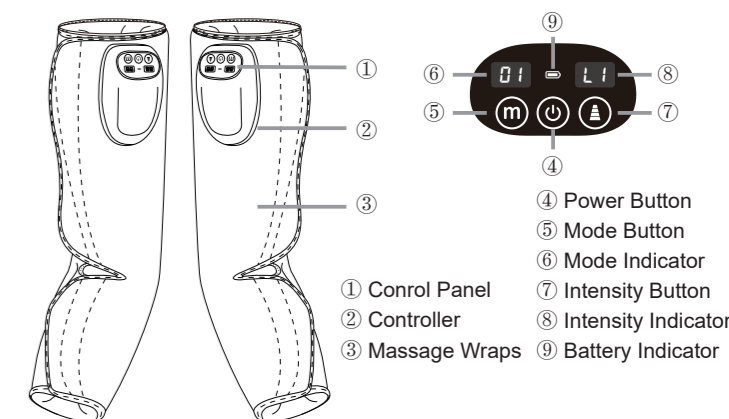
A9: The sound comes from the working air pump in the controller, providing air continuously to the airbags in the wraps, that's a normal phenomenon.

- 3 -

SPECIFICATIONS

Model	FT-059A
Name	Air Compression Leg Massager
Charging voltage	AC Input: 100~240 Volts, AC 50/60Hz, DC Output: 5V 2A
Battery Capacity	2500 mAh
Timing	20 Minutes

NAMES OF COMPONENTS



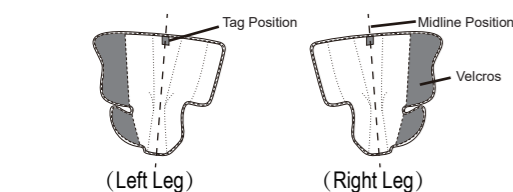
- ① Control Panel
- ② Controller
- ③ Massage Wraps
- ④ Power Button
- ⑤ Mode Button
- ⑥ Mode Indicator
- ⑦ Intensity Button
- ⑧ Intensity Indicator
- ⑨ Battery Indicator

- 4 -

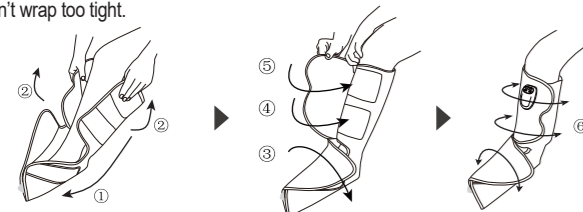
USAGE

Note: please charge for 3~4 hours before using for the first time.

- Check the tags to confirm the wraps for Left / Right Leg and the central line.



- Wear the wraps on foot and calf properly, then adjust the position and tightness, don't wrap too tight.



- Long press the "Power Button" to start, it will start with Mode 1/Low intensity level by default.

- Press the "Mode Button" to switch to different massage mode.
There are 3 massage modes optional, see the difference in FAQS A2 session.

- Press the "Intensity Button" to adjust air pressure intensity, 3 levels available.
We suggest you start with low intensity for the first use, gradually increase after you get used to it.

Note: The device will automatically shut off after 20 minutes operation, if you want to enjoy more or end the massage earlier, press the power button to turn it on / off.

- 5 -

CLEANING

Make sure to cut off the power before you clean the machine.

- If dirty, please wipe the controller and wraps it with a soft cloth moistened with soap solution.
- Don't use gasoline, alcohol, diluent and other irritating liquid to wipe the machine in case it causes malfunction or the components are damaged or discolored.
- Not to clean the device during treatment, be sure that the device is turned off before cleaning.
- Toothpicks can be used to remove the hair or chippings attached on the Velcros.
- Do not hold the device under running water, do not submerge it in water or other liquids.
- Ensure that no water penetrates into the machine. If this should ever happen, stop using until it's completely dry.

STORAGE

- Keep it out of the reach of children.
- Don't disassemble the machine by yourself.
- Don't place it in high temperature and humidity condition.
- Don't place heavy stuff on it.
- Do not make any sharp kinks in the wraps.
- After use, put the wraps in the original package.
- Store the machine in a cool, well-ventilated place.
- Do not expose the device to direct sunlight and protect it against dirt and moisture.

DISPOSAL

Please adhere to the local regulations when you dispose of the wasted

- 6 -

TROUBLESHOOTING

Problems	Causes & Solutions
1. Press the power button, but not work.	1. Battery runs out, recharge it or connect the power adapter to power it to use. 2. Need to press the power button for 3 seconds to turn in on.
2. Break off during operation	1. Battery runs out, recharge it or connect the power adapter to power it for use. 2. It will shut off automatically after 20 minutes of use, you can restart it.
3. Too light or tight.	1. There are three massage levels for you to choose; 2. You can adjust the width of the wrap to make the strength suitable; 3. Turn off the machine if you cannot bear the strength.
4. Low battery.	It may take 2.5~3.5 hours to fully charge, and can runs for 3.5~4.5 hours between charges.
5. The charging cable is broken.	It's a universal Type-C charging cable, you can replace it with the other one.

PACKAGE INCLUDE

- 2 x Massager Wraps
- 1 x Charger/ DC5V 2A
- 1 x User Manual
- 1 x Quick-Start Guide
- 1 x Portable Storage Bag

- 7 -

CONTACT US

If you have any problem during use, please feel free to contact our after-sales support team at any time.

- E-mail: service@ifitking.com

Note: Please tell us your order number along with the problems you meet in the email. Pictures or videos are welcomed for faster and better service.

- If you want to follow up our new products and latest promotional information, please visit our official website or Facebook page.

[@FitKingWellness](https://www.facebook.com/fitkingwellness)

www.ifitking.com



Send Email
service@ifitking.com



Follow Us
[@FitKingWellness](https://www.facebook.com/fitkingwellness)

- 8 -



SHENZHEN FIT KING HEALTH TECH.CO.,LTD

501-C, Building 5, Baimenqian Industrial Zone, Nanwan Street,
Longgang District, Shenzhen, China

service@ifitking.com

www.ifitking.com