



TABLE OF CONTENTS///

- Intro -----2
- Installation Preview-----3
- Safety -----4
- In the Box -----5
- Getting Started -----6
- Assembly-----10
- Removal Process-----24
- Frequently Asked Questions-----26
- Limited Warranty-----27

Need some help?

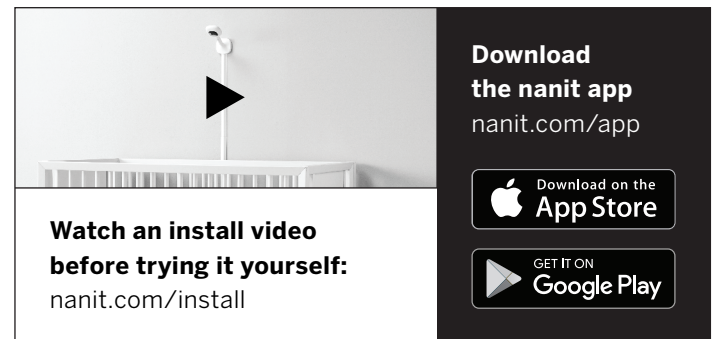
support.nanit.com

FCC and Industry Canada Compliance information:

nanit.com/legal/compliance

For all other things Nanit:

nanit.com



Download the nanit app
nanit.com/app

Watch an install video before trying it yourself:
nanit.com/install

Download on the **App Store**

GET IT ON **Google Play**

INTRO///

Your bundle of joy is finally here and we are so excited for you! We would like to take this opportunity to thank you for choosing Nanit for your nursery.

We went the extra mile to ensure your new camera and wall mount system create the safest, most secure monitoring system for your new baby. That means every hardware detail, from cable covers to mounting template, has been crafted with the highest level of safety in mind.

However, to ensure your system lives up to its potential, your Nanit needs one last thing not found in the box: proper installation. Please follow the directions precisely.

The next pages feature important setup instructions for how to safely attach Nanit to your nursery's wall, how to use the included cable covers to prevent cords from accidentally posing a strangulation risk, and more.

Unlike a parenting book, this is no time to skim.

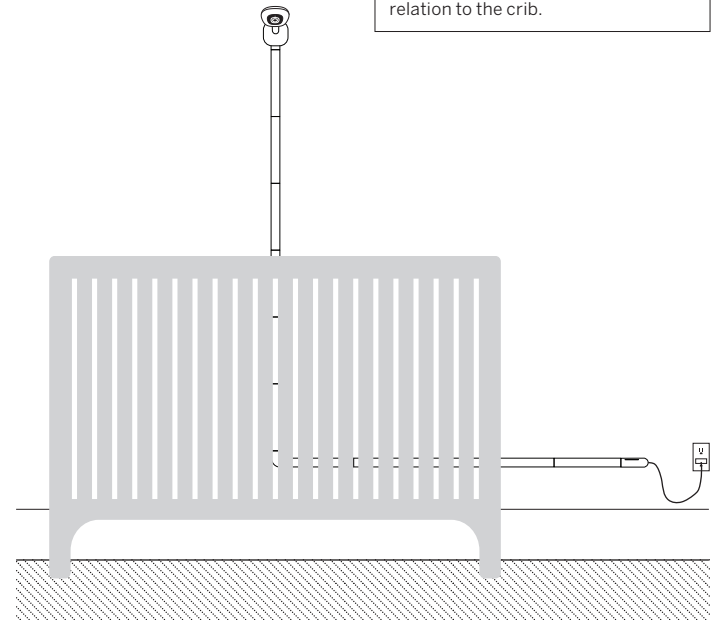
If you have any questions along the way, please visit support.nanit.com.

INSTALLATION PREVIEW///

Location, Location

The Nanit Wall Mount needs to be installed at the center of the wall behind and above your baby's crib. This gives you the best view possible of your baby, and ensures that Nanit's smart algorithms are able to track your baby.

You should also consider the location of the nearest power outlet when you install your Nanit. Using the included Safety Kit, you can choose to route your cables to the right (as pictured) or left of your crib, depending on where your outlet is located in relation to the crib.



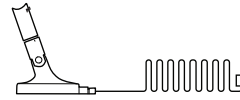
SAFETY///

- Strangulation Hazard Alert: Children have strangled in cords. NEVER attempt to use the cord without its protective covering. Check protective covering before each use to ensure that the cord is not exposed to your child. Immediately discontinue use if protective covering is damaged or broken.
- This device is designed to be mounted behind a standard crib and against the wall only. Do not use it elsewhere.
- Adult assembly is required. Keep small parts and packaging away from children when assembling.
- This product cannot replace adult supervision. Ensure your child's health by checking on him/her regularly.
- This device is designed for indoor use only.
- This product and its packaging are not toys. Do not allow children to play with them.
- Use only the AC power supply included with your Nanit.

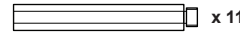
WHAT'S IN THE BOX///



1. Nanit Camera



2. Camera Mount



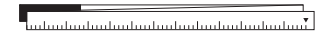
3. Cable Covers



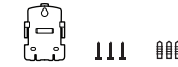
4. Elbow Connectors



5. End Cap



6. Mounting Template



7. Wall Mount Template, Screws & Anchors



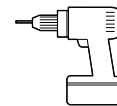
8. Power Adapter



9. Extra Tape

Can't find a piece? Be sure to check in the two boxes that are underneath the plastic tray in your Nanit packaging.

TOOLS YOU'LL NEED///



1. Power Drill with 3/16" Drill Bit



2. Screwdriver #2 Phillips

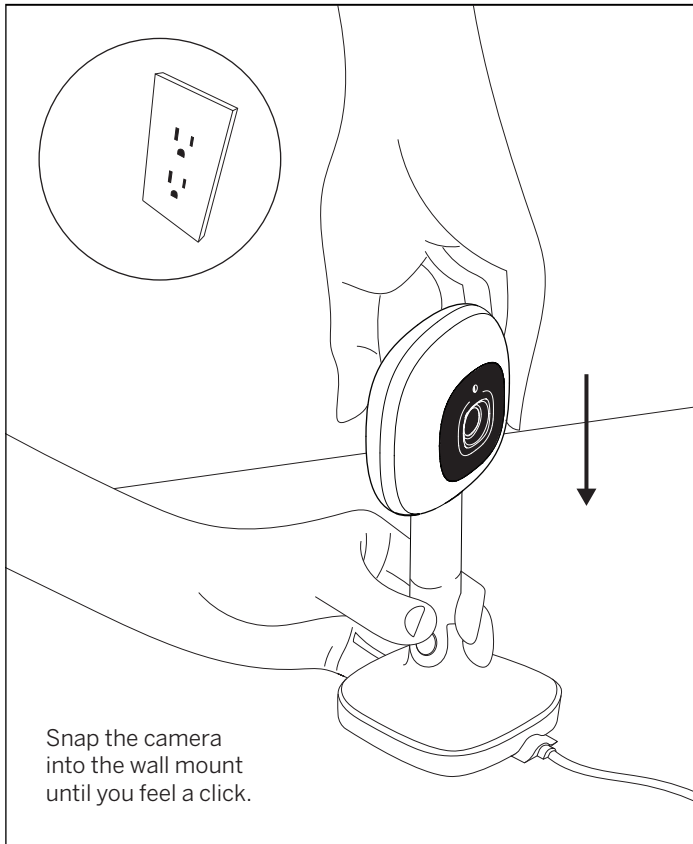


3. Hammer (optional)

GETTING STARTED///

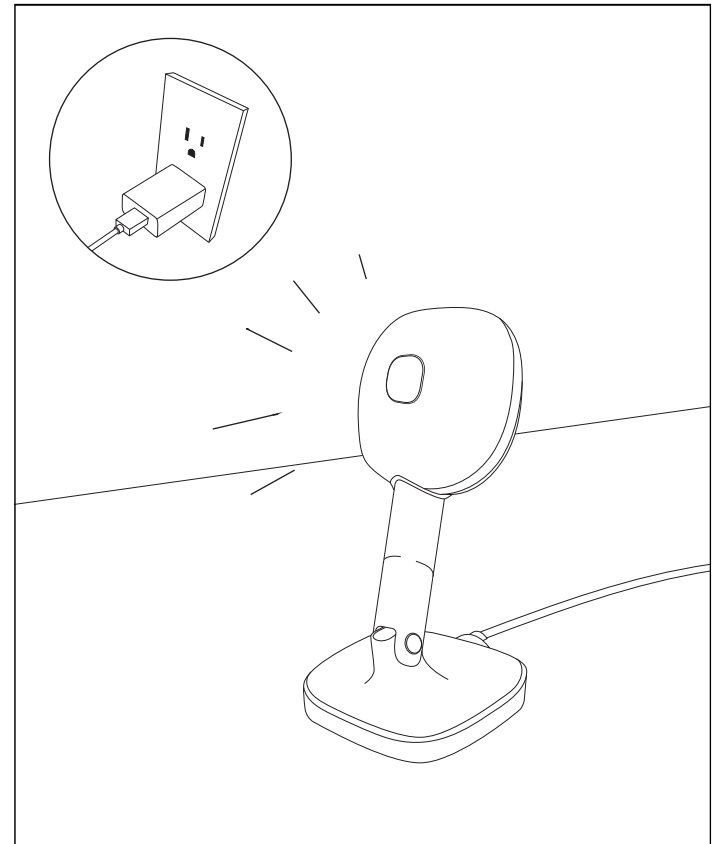
First, let's make sure that your Nanit will get a strong Wi-Fi signal in your nursery.

Place the Wall Mount down in an upright position and attach the Nanit Camera. When you feel a click, the camera is properly connected.



Connect the Wall Mount USB to the power adapter, and plug the adapter into your electrical outlet.

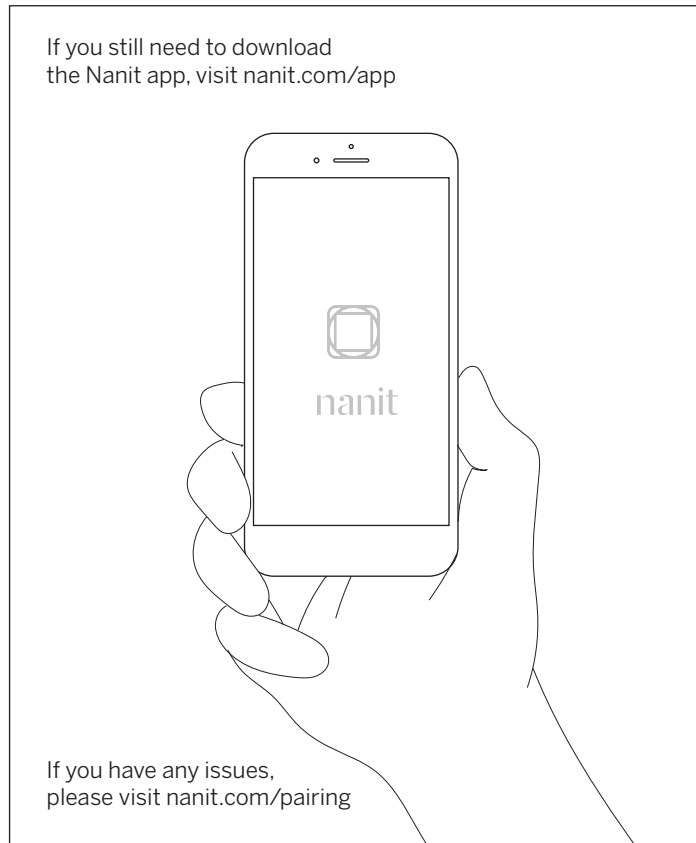
Within less than a minute, you should see a flashing light from the back of the camera.



GETTING STARTED///

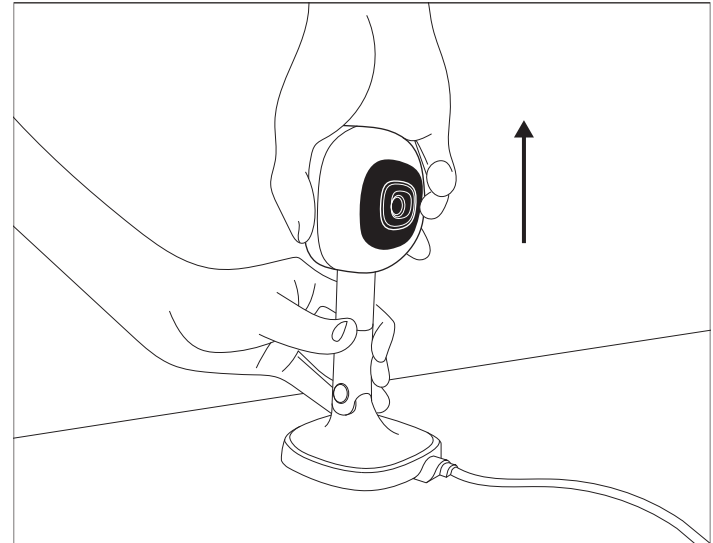
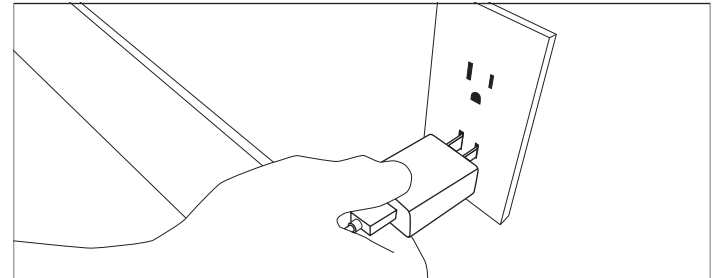
Open the Nanit app and tap register to create your account, or login if you already have one.

Once you are logged in, follow the in-app instructions to continue the setup process.



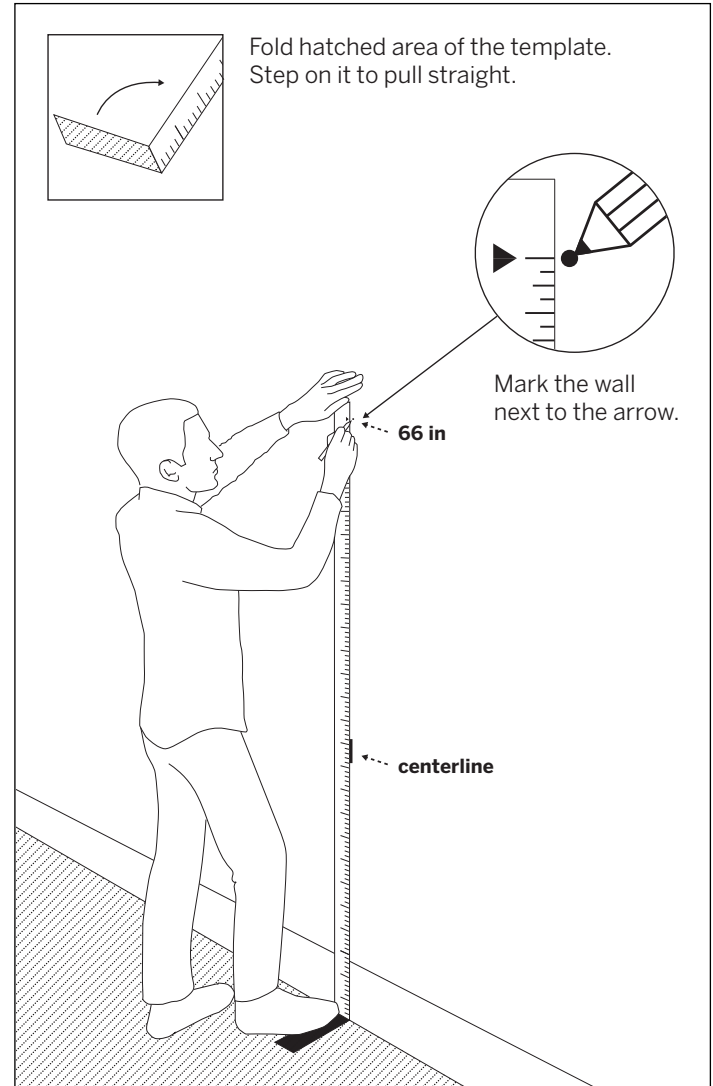
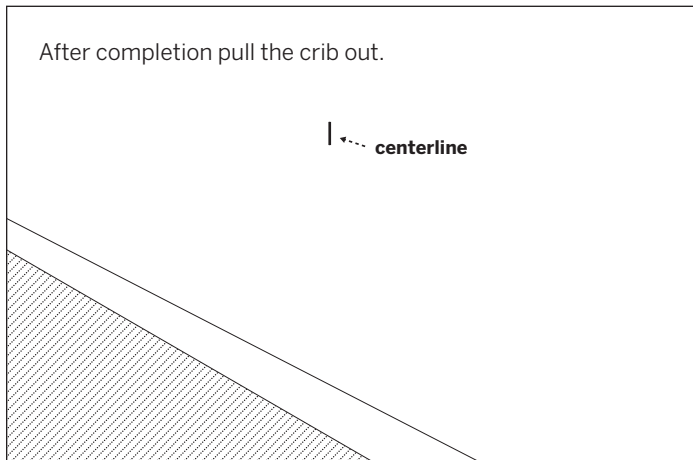
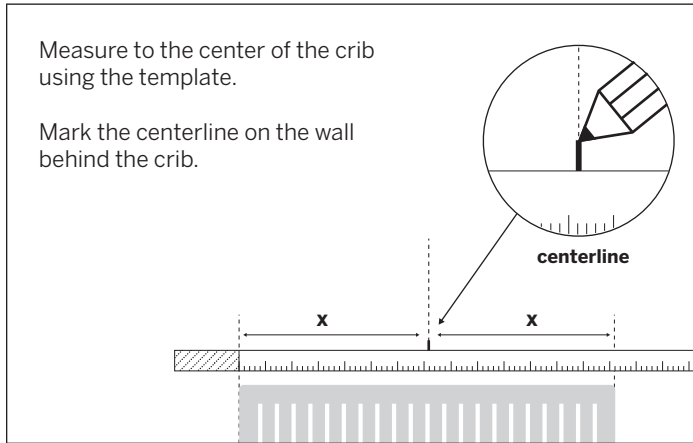
Once your camera is successfully paired with your Wi-Fi network, unplug the power adapter from your outlet and remove the Nanit Camera from the Wall Mount for easier installation.

We're ready for assembly!



ASSEMBLY///

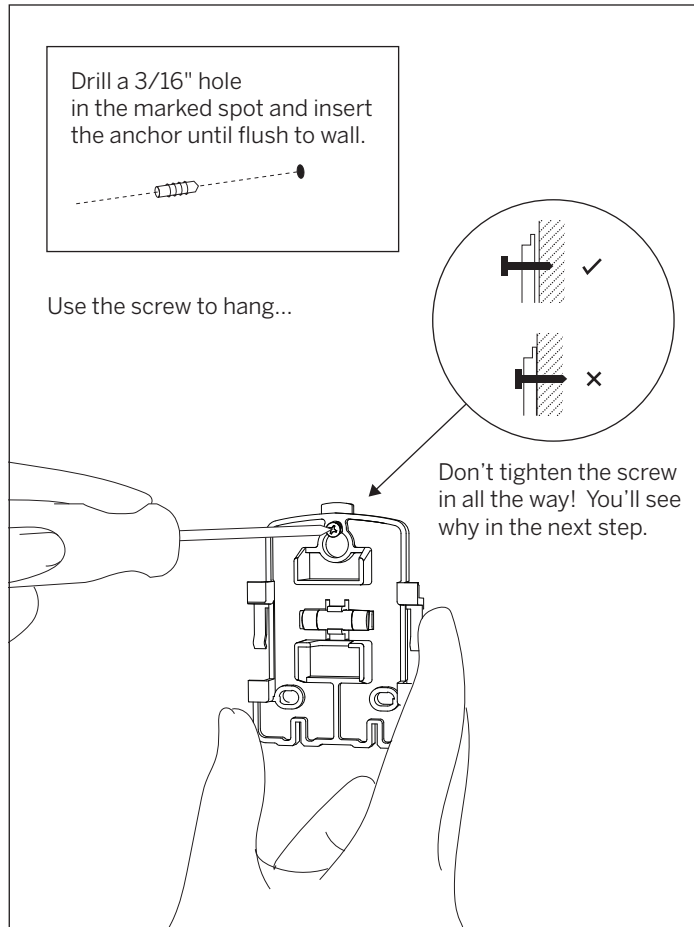
Ready? Great!
Use the mounting template
to mark the anchor hole on the wall.



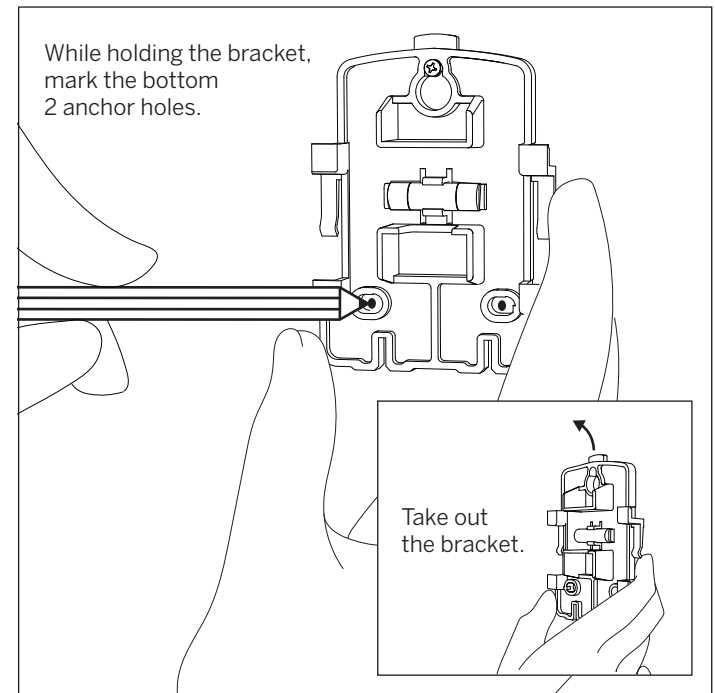
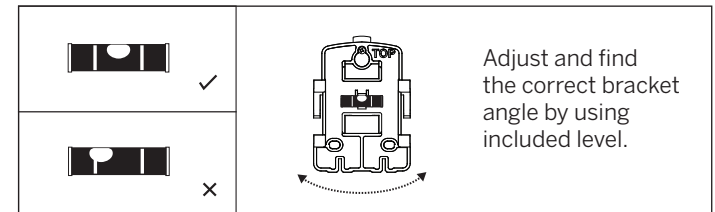
ASSEMBLY///

Drill a hole. Use the anchor and the screw to hang the bracket.

This will help us figure out where the rest of our holes should go!



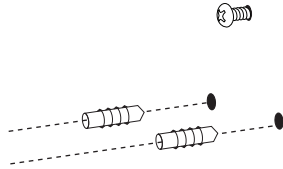
Adjust wall bracket angle by using the included level. Mark the bottom 2 anchor holes.



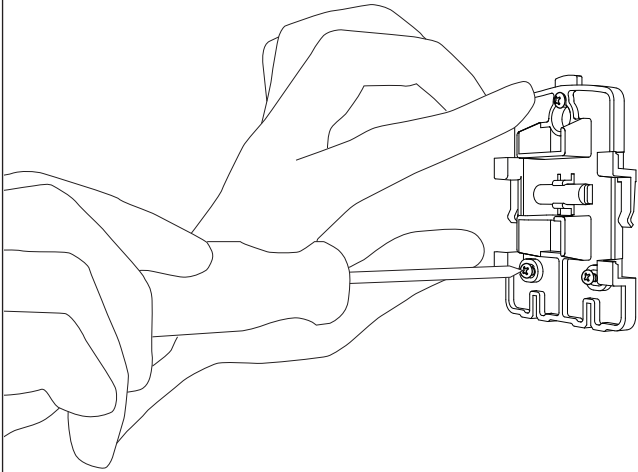
ASSEMBLY///

Attach the mounting bracket to the wall using provided anchors and screws.

Drill 3/16" holes in the two marked spots and insert the anchors until flush to wall.

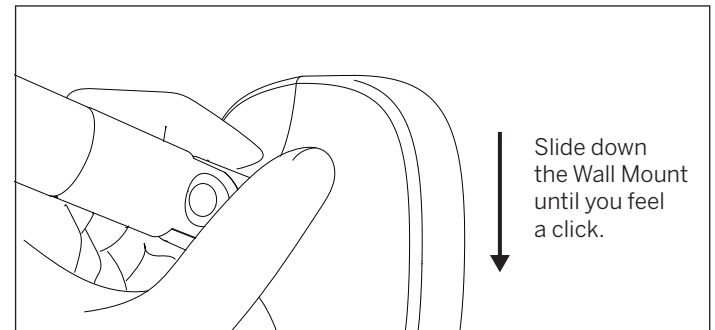
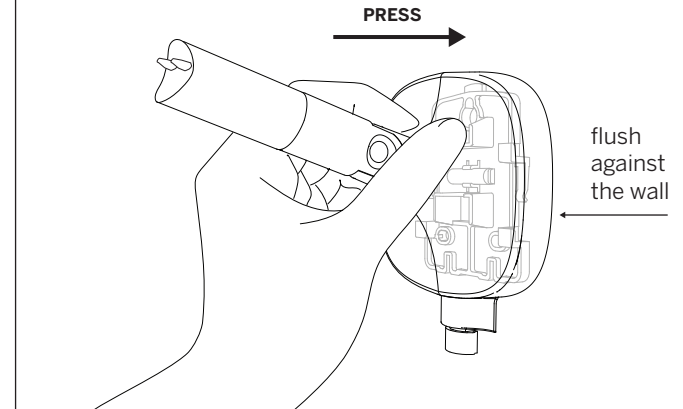


Hang the bracket back on the top screw. Insert bottom two screws and tighten all three screws.



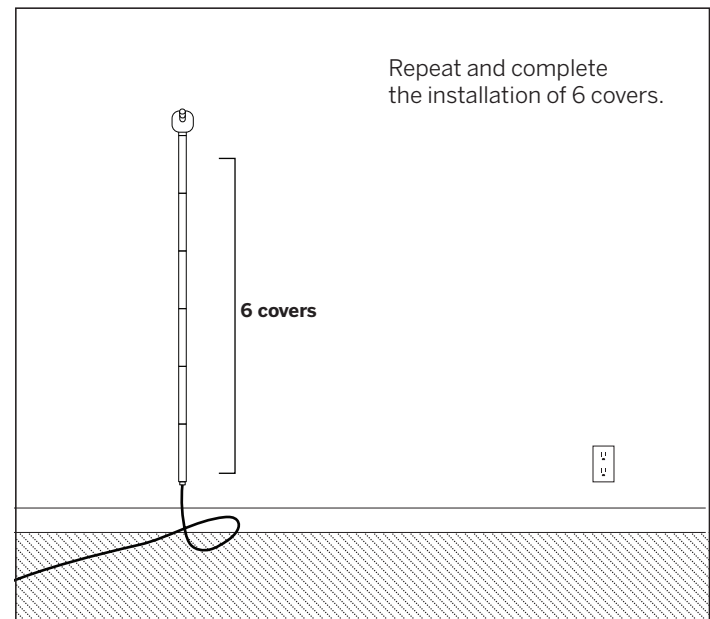
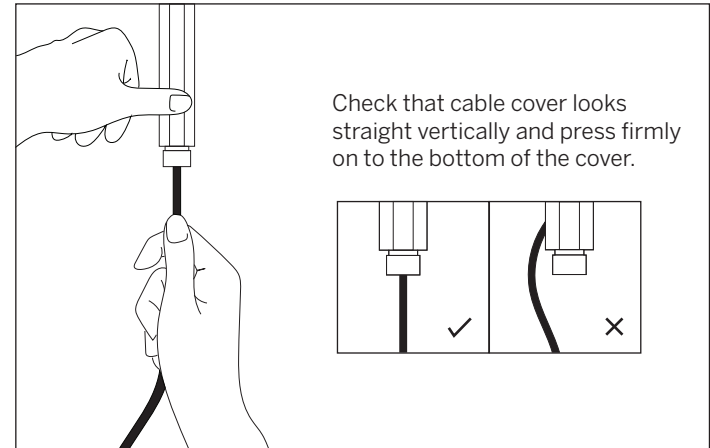
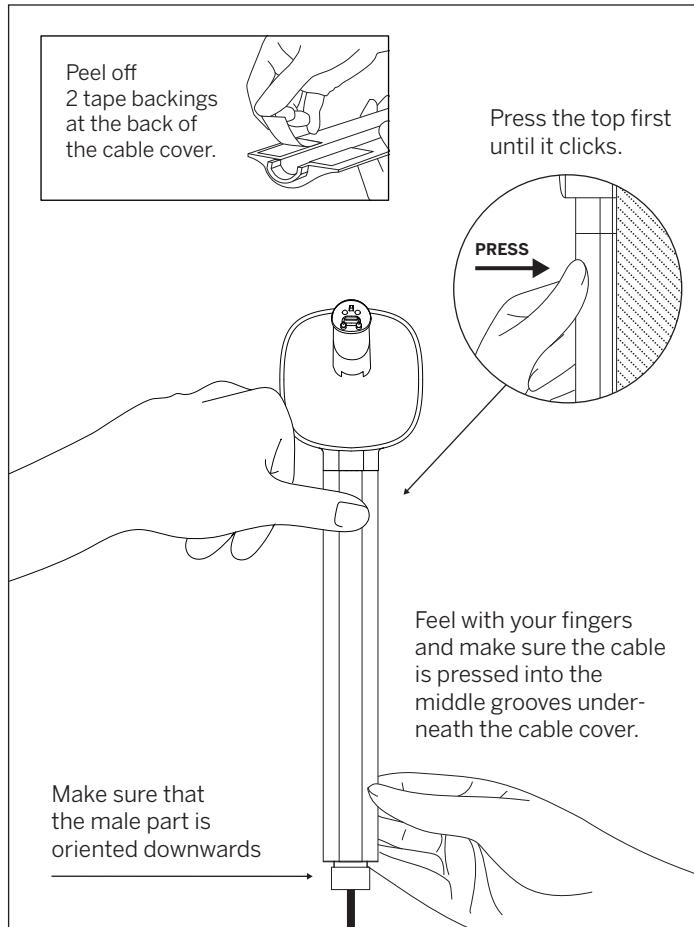
The hard part's over!
It's time to attach your Wall Mount.

Place Wall Mount over bracket and press **FLUSH** against the wall until you see that it's touching the wall completely.



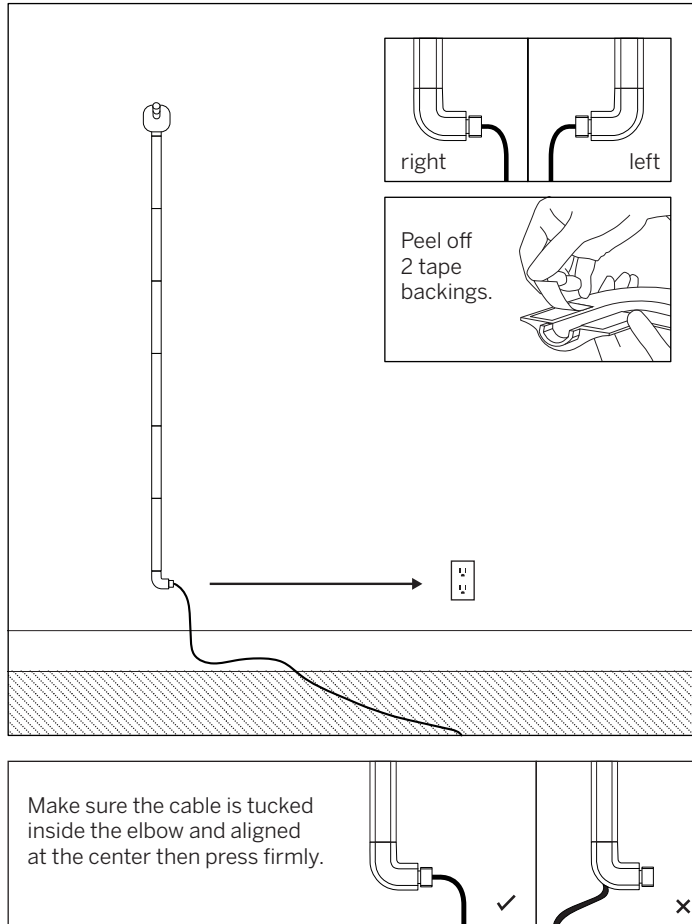
ASSEMBLY///

Wipe the wall to remove dust from drilling. Then, attach 6 cable covers to the wall straight down.

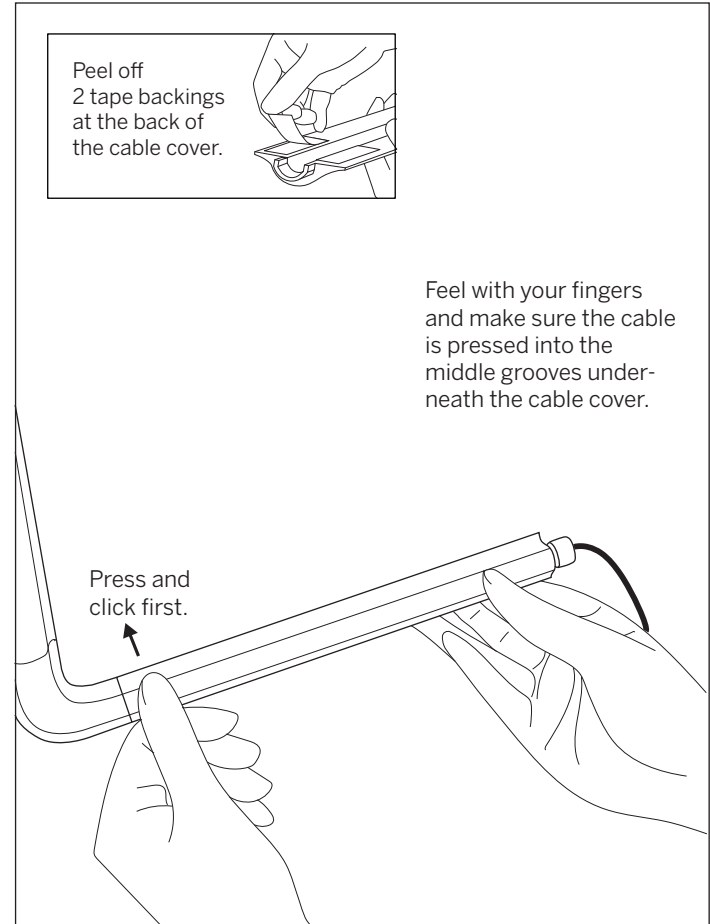


ASSEMBLY///

Choose the left or right elbow joint depending on where your power outlet is located. Attach the elbow joint.

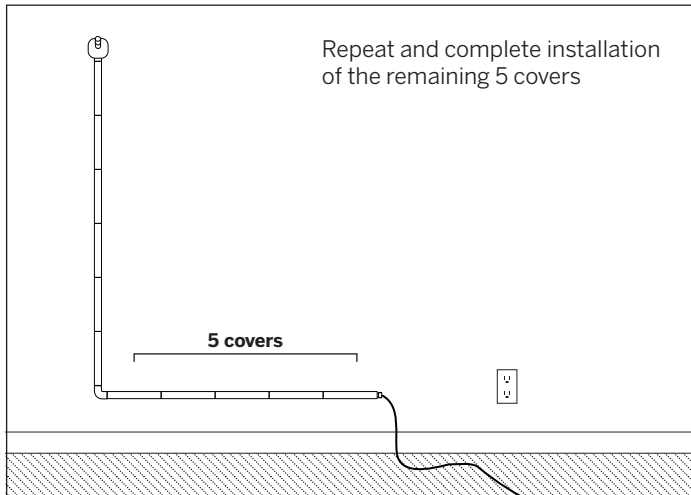
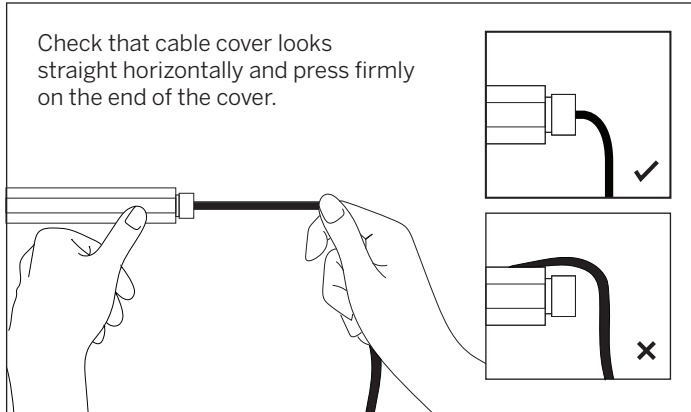


Start to attach the horizontal cable covers. You're in the home stretch!

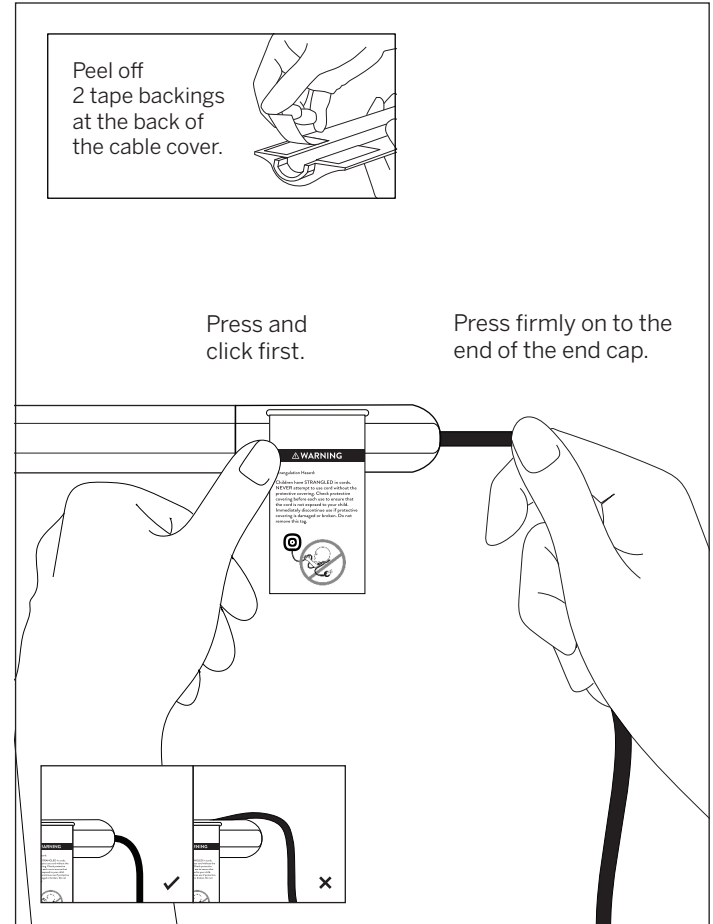


ASSEMBLY///

Repeat for remaining cable covers until complete.

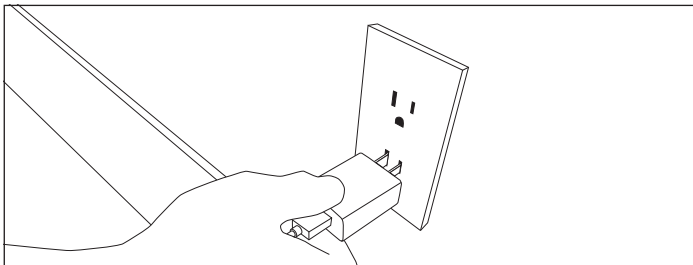
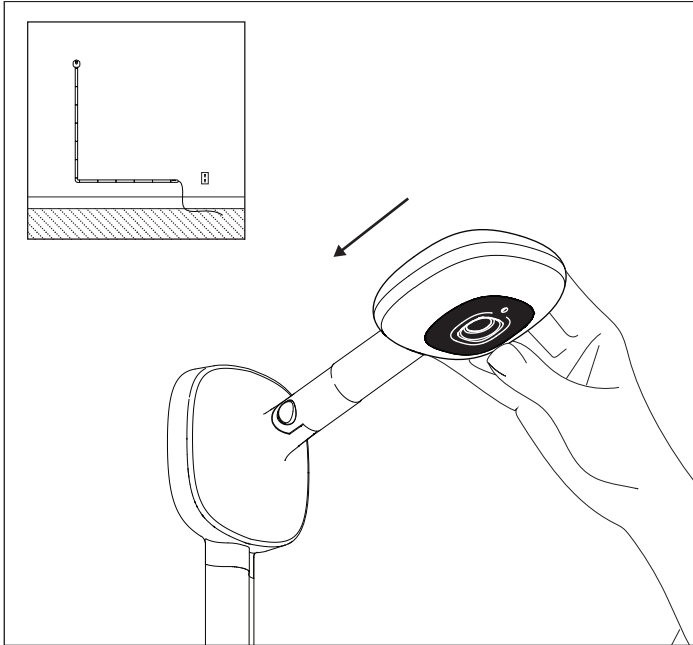


Attach the end cap.

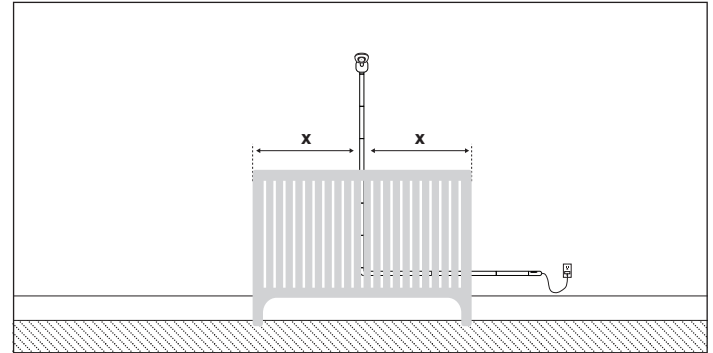


ASSEMBLY///

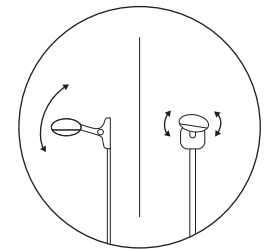
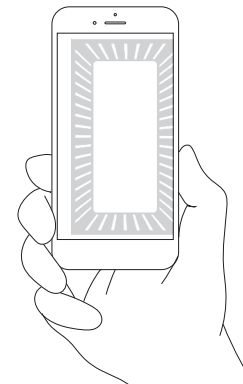
Snap the Camera into the Wall Mount until you feel a click. Plug the power adapter into your outlet. You should see your Live Stream return to the Nanit app within a minute.



Ta-da! You're up and running, and ready to put your crib back in place. Once your crib is back in place, continue following the in-app instructions to make sure your crib is positioned correctly.



Complete the in-app
crib positioning process.

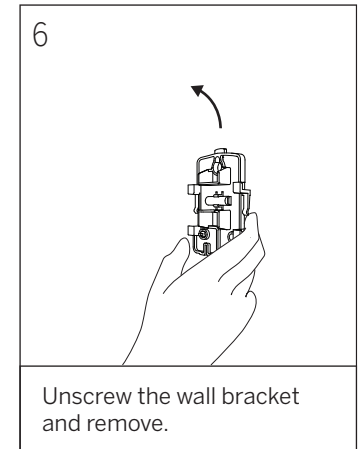
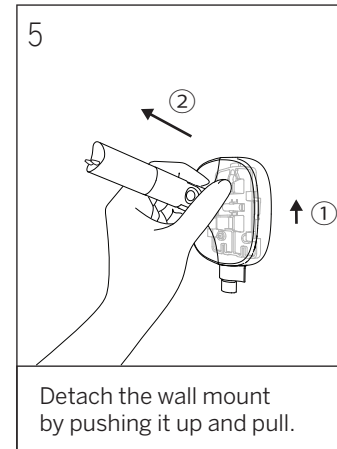
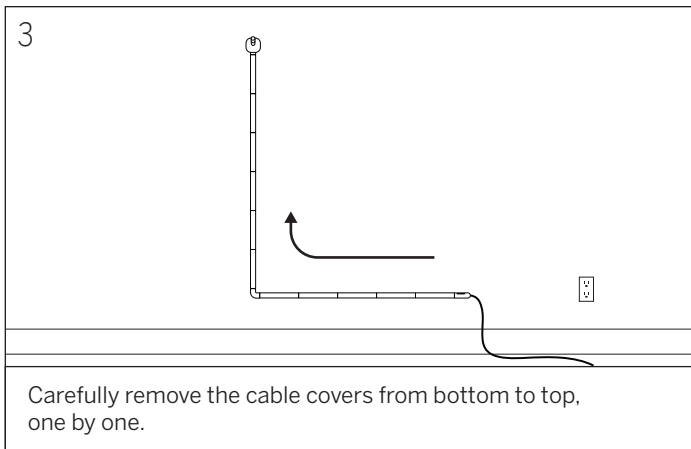
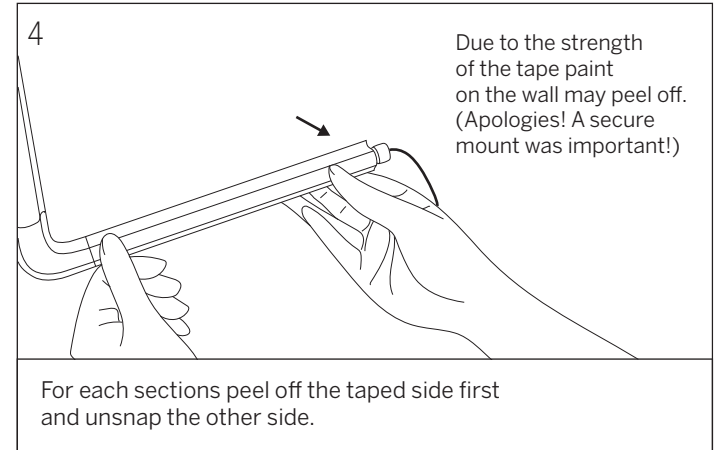
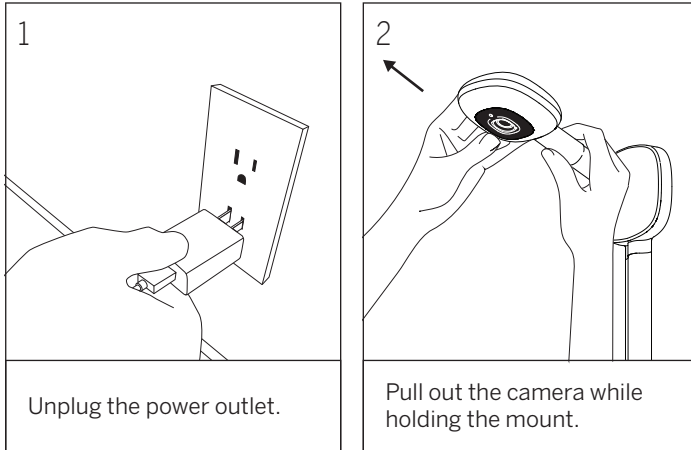


Adjust camera
angle to ensure
correct positioning

If you have any problems or questions visit support.nanit.com.

REMOVAL PROCESS///

Need to move or remove your Nanit? No problem.



FAQ///

What's with all the pieces?

Rooms (and their walls) come in all shapes and sizes. The Nanit Wall Mount's modular pieces provide flexibility, allowing you to configure your system based on your outlet's location -- keeping loose wires contained and away from baby.

Do I need to use the mounting template?

In a word, yes. The provided mounting template ensures you install Nanit Wall Mount in the right position, allowing its smart algorithm technology to work its best.

Will my toddler be able to reach the camera?

The Nanit Wall Mount has been designed so that a 2-year-old in the 90th percentile of growth (aka a future pro basketball player) standing with arms outstretched can't reach it.

Will Nanit work with a portable crib or bassinet?

Nanit will work with all types of cribs and bassinets, provided they are placed within the camera's field of view. If placing your crib or bassinet where Nanit can see it is a challenge, you can remove Nanit from its wall mount and drop it into the Multi-Stand (sold separately) to keep a close eye on baby.

Can I hang a cute mobile on my Nanit?

Please refrain from adding any additional weight to the mount. While designed to safely and securely support the Nanit Camera above your crib, Nanit Wall Mount is not designed to support additional weight. A mobile, even the most adorable one, may obscure the camera, as well.

Do I have to use the included cable covers?

Most definitely. Designed to meet the most stringent safety standards in the baby monitor market, Nanit Wall Mount's cable covers are needed to secure your monitor safely next to a crib.

Can little ones get their fingers into the cable covers?

Not to worry. The cable covers are designed to prevent tiny baby fingers from reaching behind them and grabbing hold.

My Nanit Camera isn't pairing. What do I do?

Sorry to hear about that! Please visit nanit.com/pairing for assistance.

For additional information and troubleshooting visit, support.nanit.com

LIMITED WARRANTY///

THIS LIMITED WARRANTY CONTAINS IMPORTANT INFORMATION ABOUT YOUR RIGHTS AND OBLIGATIONS, AS WELL AS LIMITATIONS AND EXCLUSIONS THAT MAY APPLY TO YOU.

1. WHAT THIS LIMITED WARRANTY COVERS; PERIOD OF COVERAGE.

Udisense, Inc. DBA: Nanit ("Nanit"), located at 244 Fifth Avenue, Suite #2702 New York, NY 10001, warrants to the owner of the enclosed product that the product contained in this box ("Product") will be free from defects in materials and workmanship for a period of one (1) year from the date of delivery following the original retail purchase (the "Warranty Period"). If the Product fails to conform to this Limited Warranty during the Warranty Period, Nanit will, at its sole discretion, either (a) repair or replace any defective Product or component; or (b) accept the return of the Product and refund the money actually paid by the original purchaser for the Product. Repair or replacement may be made with a new or refurbished product or components, at Nanit's sole discretion. If the Product or a component incorporated within it is no longer available, Nanit may, at Nanit's sole discretion, replace the Product with a similar product of similar function. This is your sole and exclusive remedy for breach of this Limited Warranty. Any Product that has either been repaired or replaced under this Limited Warranty will be covered by the terms of this Limited Warranty for the longer of (a) ninety (90) days from the date of delivery of the repaired Product or replacement Product, or (b) the remaining Warranty Period. This Limited Warranty is transferable from the original purchaser to subsequent owners, but the Warranty Period will not be extended in duration or expanded in coverage for any such transfer.

2. WARRANTY CONDITIONS; HOW TO GET SERVICE IF YOU WANT TO CLAIM UNDER THIS LIMITED WARRANTY.

Before making a claim under this Limited Warranty, the owner of the Product must (a) notify Nanit of the intention to claim by visiting support.nanit.com during the Warranty Period and providing a description of the alleged failure, and (b) comply with Nanit's return shipping instructions. Nanit will have no warranty obligations with respect to a returned Product if it determines, in its reasonable discretion after examination of the returned Product, that the Product is an Ineligible Product (defined below).

3. WHAT THIS LIMITED WARRANTY DOES NOT COVER.

This Limited Warranty does not cover the following (collectively "Ineligible Products"): Products marked as "sample" or "Not for Sale", or sold "AS IS"; or Products that have been subject to: (a) modifications, alterations, tampering,

or improper maintenance or repairs; (b) handling, storage installation, testing, or use not in accordance with the Terms of Service or other instructions provided by Nanit; (c) abuse or misuse of the Product; (d) breakdowns, fluctuations, or interruptions in electric power or the telecommunications network; or (e) Acts of God, including but not limited to lightning, flood, tornado, earthquake, or hurricane. This Limited Warranty does not cover consumable parts, including batteries, unless damage is due to defects in materials or workmanship of the Product, or software (even if packaged or sold with the product). Nanit recommends that you use only authorized service providers for maintenance or repair. Unauthorized use of the Product or software can impair the Product's performance and may invalidate this Limited Warranty. This Limited Warranty does not apply to anything other than the Products, including any software, even if packaged or sold with the Products. Software distributed by Nanit (including, but not limited to system software) is not covered under this Limited Warranty. Refer to the licensing agreement accompanying the software for details of your rights with respect to its use. Nanit does not warrant that the operation of the product will be uninterrupted or error-free.

4. NOT A MEDICAL DEVICE.

The services and the products are not intended to be used as a medical device and the products are not medical devices. Furthermore, the services and the products are neither regulated nor approved by the U.S. Food and drug administration, and are not designed to detect or prevent causes of any medical condition. The services are not a substitute for medical care or adult supervision. You acknowledge, understand and agree that your use of the services and the products is entirely at your own risk.

5. DISCLAIMER OF WARRANTIES.

Except as stated above in this limited warranty, and to the maximum extent permitted by applicable law, Nanit disclaims all express, implied, and statutory warranties and conditions with respect to the product, including the implied warranties of merchantability, fitness for a particular purpose and non-infringement. To the maximum extent permitted by applicable law, Nanit also limits the duration of any applicable implied warranties or conditions to the duration of this limited warranty.

6. LIMITATION OF DAMAGES.

In addition to the above warranty disclaimers, in no event will Nanit be liable for any consequential, incidental, exemplary, or special damages, including any damages for lost data or lost profits, arising from or relating to this limited warranty or the product, and Nanit's total cumulative liability arising from or related to this limited warranty or the product will not exceed the amount actually paid

for the product by the original purchaser.

7. LIMITATION OF LIABILITY.

The Nanit online services ("services") provide you information ("product information") regarding your Nanit products or other peripherals connected to your products ("product peripherals"). The type of product peripherals that may be connected to your product may change from time to time. Without limiting the generality of the disclaimers above, all product information is provided for your convenience, "as is", and "as available". Nanit does not represent, warrant, or guarantee that product information will be available, accurate, or reliable or that product information or use of the services or product will provide safety in your home. You use all product information, the services, and the product at your own discretion and risk. You will be solely responsible for (and Nanit disclaims) any and all loss, liability, or damages, including to your wiring, fixtures, electricity, home, product, product peripherals, computer, mobile device, and all other items and pets in your home, resulting from your use of the product information, services, or product. Product information provided by the services is not intended as a substitute for direct means of obtaining the information. For example, a notification provided through the service is not intended as a substitute for audible and visible indications in the home and on the product, nor for a parent checking on the child.

8. YOUR RIGHTS AND THIS LIMITED WARRANTY.

This Limited Warranty gives you specific legal rights. You may also have other legal rights that vary by state, province, or jurisdiction. Likewise, some of the limitations in this Limited Warranty may not apply in certain states. The terms of this Limited Warranty will apply to the extent permitted by applicable law. For a full description of your legal rights you should refer to the laws applicable in your jurisdiction and you may wish to contact a relevant consumer advisory service.

