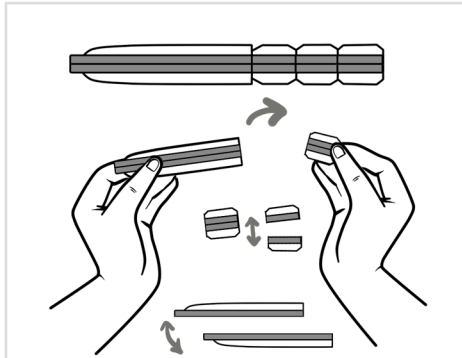


Installation Method 1

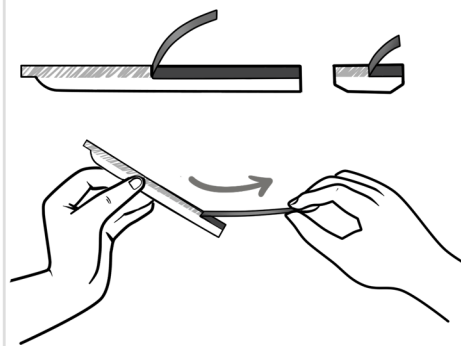
Installation Method 2



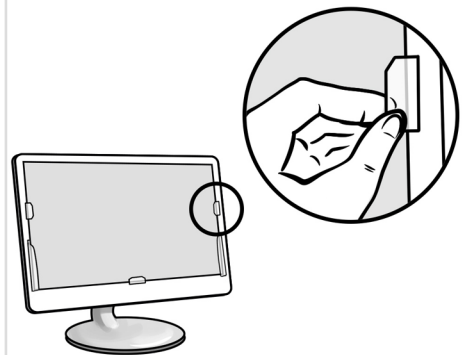
1. First, be sure that your screen has nothing on it that will cause a problem with your bezel. That means clean all oils, dust, and everything else from it.



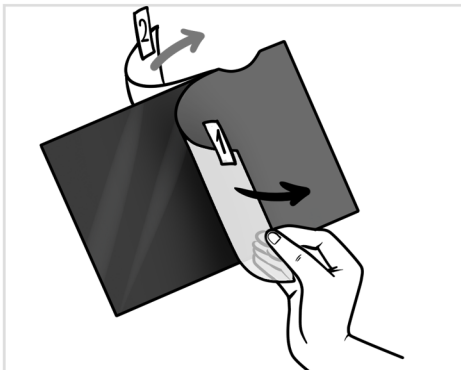
2. The plastic tabs need to be removed and separated.



3. Each piece will have another layer of film, gently remove it.



4. Position the small stickers as shown here.



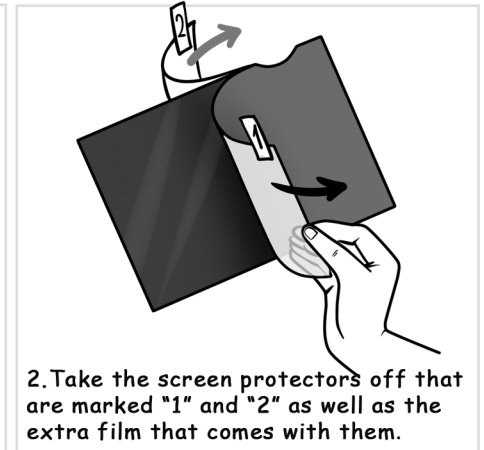
5. Take the screen protectors off that are marked "1" and "2" as well as the extra film that comes with them.



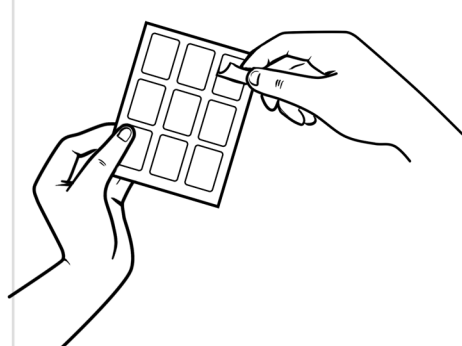
6. Slide the Privacy Filter down between the plastic tabs and the monitor.



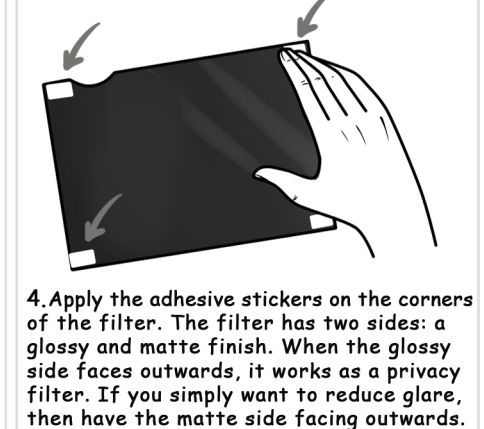
1. First, be sure that your screen has nothing on it that will cause a problem with your bezel. That means clean all oils, dust, and everything else from it.



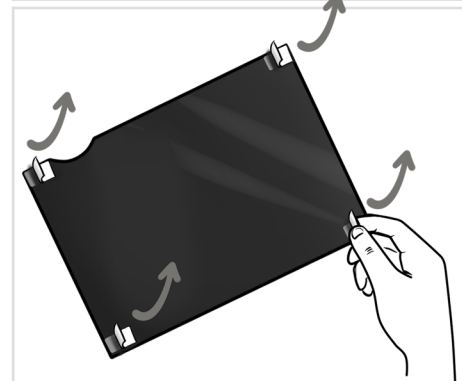
2. Take the screen protectors off that are marked "1" and "2" as well as the extra film that comes with them.



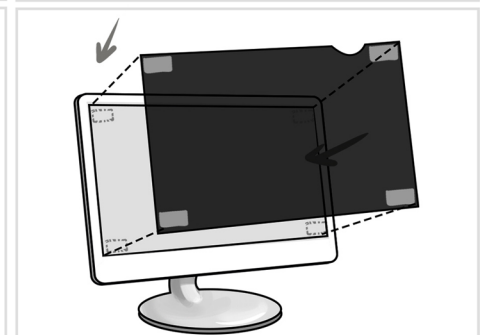
3. Remove four pieces of the double-sided adhesive tape from the included sheet.



4. Apply the adhesive stickers on the corners of the filter. The filter has two sides: a glossy and matte finish. When the glossy side faces outwards, it works as a privacy filter. If you simply want to reduce glare, then have the matte side facing outwards.



5. Slowly and carefully peel off the protective paper from the adhesive sticker.



6. Slowly and carefully attach the Privacy Filter on your screen. To finish, use the microfiber cloth to push out bubbles from the edges of the screen and wipe off any smudges.