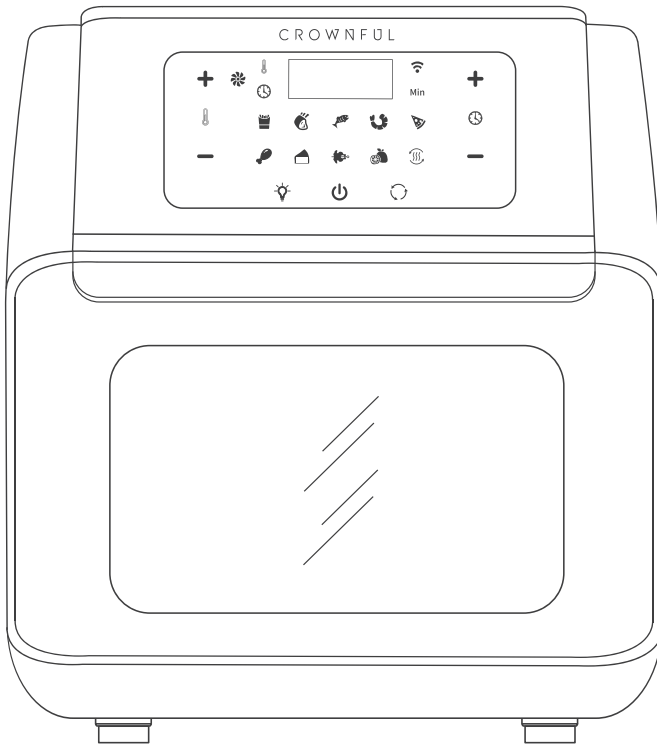


CROWNFUL

# USER MANUAL

## SMART AIR FRYER OVEN

MODEL NO.: TXG-KK-DT10L-D-W



READ THIS MANUAL THOROUGHLY BEFORE USING AND SAVE IT FOR FUTURE REFERENCE

# TABLE OF CONTENTS

IMPORTANT SAFETY INSTRUCTIONS .....	3
PACKAGE CONTENTS .....	5
KNOW YOUR AIR FRYER OVEN .....	6
SPECIFICATIONS .....	7
BEFORE FIRST USE .....	7
CROWNFUL APP SETUP .....	8
CONTROL PANEL .....	14
USING YOUR AIR FRYER .....	15
CLEANING AND MAINTENANCE .....	22
TROUBLESHOOTING .....	23
FCC STATEMENT .....	24
WARRANTY INFORMATION .....	25
CUSTOMER SUPPORT .....	25
NOTES .....	26

# IMPORTANT SAFETY INSTRUCTIONS

---

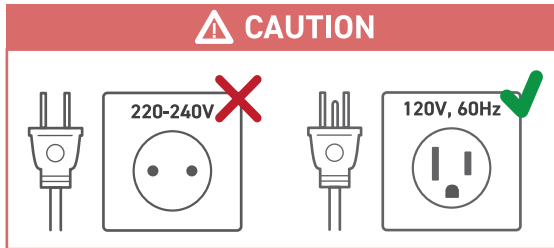
**When using your electrical appliances, basic safety precautions should always be followed to reduce the risk of fire, electric hazard and injury to persons, including the following.**

## **DANGER**

1. This appliance is not intended for use by persons (including children below 8 years old) with reduced physical, sensory or mental capabilities, or lack of experience and knowledge, unless they have been given supervision or instruction concerning the use of appliance by a person responsible for their safety.
2. Check if the voltage indicated on the appliance corresponds to the local mains voltage before you connect the appliance.
3. Do not use the appliance if the plug or the mains cord or the appliance itself is damaged.
4. Never immerse the housing (which contains electrical components and the heating elements) in water nor rinse under tap water.
5. Do not let any water or other liquid get into the appliance to prevent electric shock.
6. Always use the pan or cooking accessories with the ingredients to avoid the food from getting in direct contact of the heater/heating elements
7. Do not cover the air inlet and the air outlet while the appliance is operating.
8. Do not fill the pan with oil as this may cause a fire hazard.
9. While working, the internal temperature of the unit reaches several hundred degrees Fahrenheit. TO AVOID PERSONAL INJURY, never place your hands inside the unit unless it is thoroughly cooled down.
10. Children should be supervised to ensure that they do not play with the appliance. Cleaning and user maintenance shall not be made by children unless they are older than 8 and if supervised.
11. Keep the mains cord away from hot surfaces.
12. Do not place the appliance on or near combustible materials such as a tablecloth or curtain.
13. Do not place the appliance against a wall or against other appliances. Leave at least 10cm / 3.9in free space on the back and sides and 10cm / 3.9in free space above the appliance. Do not place anything on top of the appliance.
14. Do not use the appliance for any other purpose than described in this manual.
15. The accessible surfaces may become hot during use.

16. During hot air frying, hot steam is released through the air outlet openings. Keep your hands and face at a safe distance from the steam and from the air outlet openings. Also be careful of hot steam and air when you remove the pan from the appliance.

17. Do not use with a 220-240V outlet.



18. After using the appliance, the metal cover inside is very hot, avoid contact with it after cooking.

19. Immediately unplug the appliance if you see dark smoke coming out of the appliance. Wait for the smoke emission to stop before you remove the pan from the appliance.

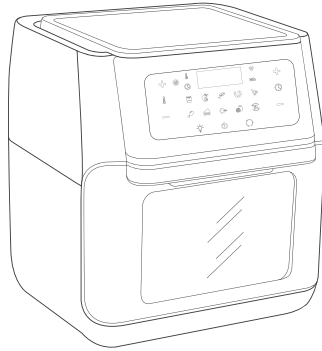
20. When reaches the set timer, cooking will stop but the fan WILL CONTINUE RUNNING for 20 seconds to cool down the Unit.

**NOTE:** If WiFi indicator turns red, Unplug the power plug and wait for 30 seconds, then plug in to power on again.

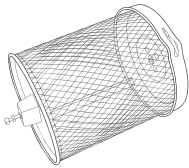
**SAVE THESE INSTRUCTIONS**

# PACKAGE CONTENTS

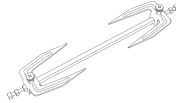
---



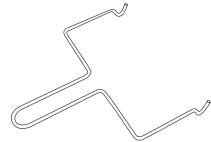
1 x Air Fryer Oven  
(Model:TXG-KK-DT10L-D-W)



1 x Rotisserie Basket



1 x Rotisserie Shaft

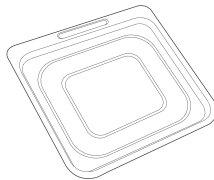


1 x Removal Tool

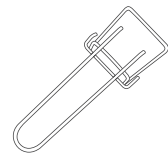
**NOTE:** You can use the removal tool to remove rotisserie basket and rotisserie shaft to avoid burns.



2 x Mesh Racks



1 x Drip Tray

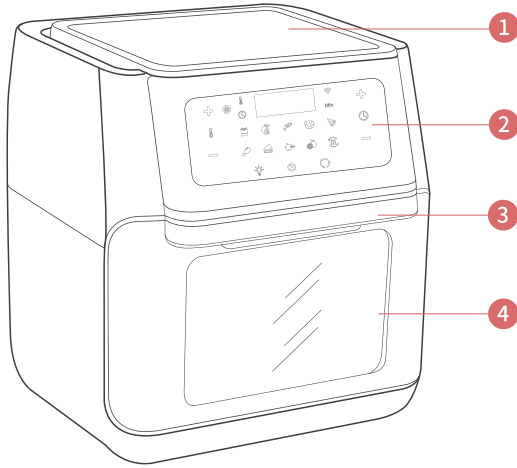


1 x Clip

**NOTE:** You can use the clip to remove mesh racks and drip tray to avoid burns.

# KNOW YOUR AIR FRYER OVEN

---

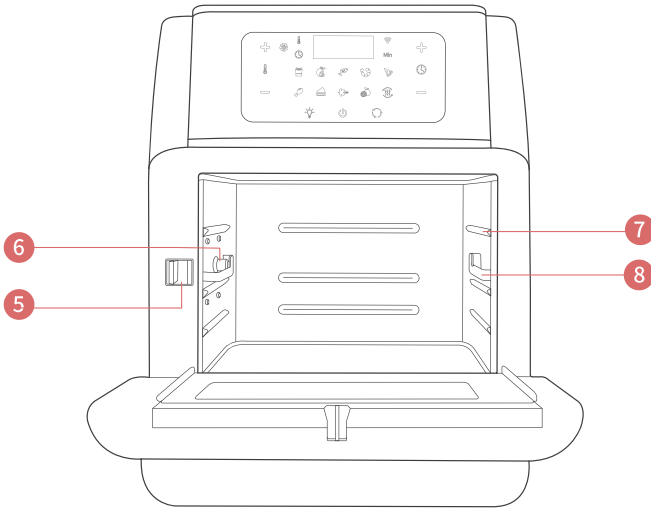


1. Top Lid

2. Control panel

3. Handle

4. Window



5. Switch

6. Lock

7. Rails

8. Sliding Chute

# SPECIFICATIONS

---

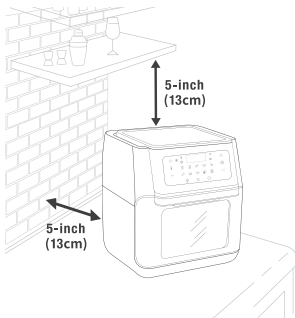
<b>Model NO.:</b>	TXG-KK-DT10L-D-W
<b>Supply Power:</b>	120V 60Hz
<b>Rated Power:</b>	1500W
<b>Capacity:</b>	10.6Quart/10L
<b>Temperature Range:</b>	180°F - 400°F (90°F - 180°F under Dehydration mode)
<b>Time Range:</b>	1 - 90 mins (1 H - 24H under Dehydration mode)

# BEFORE FIRST USE

---

## SETTING UP

1. Take out the oven from the box and remove all the packaging.
2. Place it on a stable, level, heat-resistant surface, away from anything that can be damaged by heat.
3. Wash all the accessories and clean the oven's interior. Dry and put the accessories back in oven.
4. Place the air fryer on a stable, level, heat-resistant surface. Keep away from areas that can be damaged by steam (such as walls or cupboards).



**NOTE:** Leave 5 inches / 13cm of space behind and above the air fryer. Leave enough room to remove the basket.

# CROWNFUL APP SETUP

---

## A: DOWNLOADING THE FREE MOBILE APP

To download the CROWNFUL App, please scan the QR code or search for "CROWNFUL" in Apple App Store® (iOS) or Google Play Store(Android).



**CROWNFUL APP**



### NOTE:

- For Android™ users, choose "Allow" to use CROWNFUL. It won't be used to record personal and private information.
- The CROWNFUL App is continually being improved and may change over time. If there are any differences, follow the in-app instructions.
- Follow the instructions to finish setting up your air fryer.
- All smart air fryer functions can be controlled remotely, except for starting cooking (to comply with UL safety regulations). It needs to be started cooking manually on the air fryer.

## B: CREATE/LOGIN YOUR OWN CROWNFUL ACCOUNT

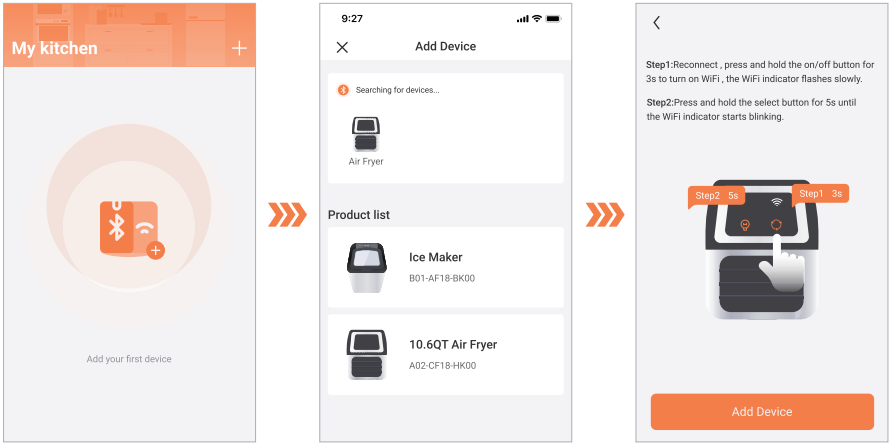
Open the CROWNFUL app. If you already have an account tap login.

### NOTE:


You must create your own CROWNFUL account to use third-party services and products. These will not work with a guest account. With a CROWNFUL account, you can also allow your family and friends to control your smart air fryer.


## C. PAIRING WITH CROWNFUL APP

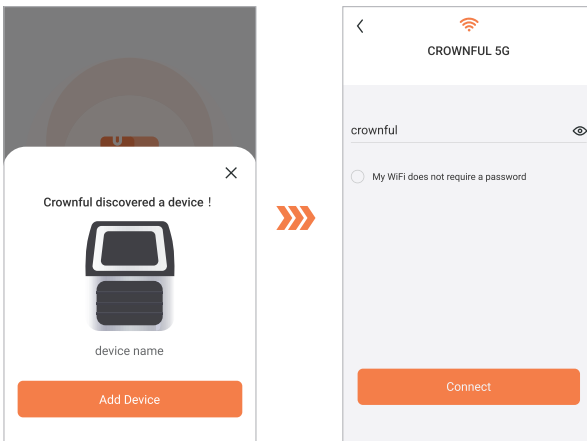
1. Turn on Bluetooth®  and WiFi®  on your phone.



2. Press and hold the rotating button  for 3 seconds to turn on Wi-Fi®, there will be a beep released, and the Wi-Fi indicator blinks slowly.

**NOTE:** If you want to turn off Wi-Fi®, press and hold the rotating button  again for 3 seconds and the Wi-Fi indicator will be off with a beep.


3. Press and hold the light button  for 5 seconds to enter the network configuration state of the device. The Wi-Fi indicator blinks quickly with a beep.
4. Tap + in the CROWNFUL App and select your smart air fryer from the product list during the first setup.
5. Once paired successfully, it will remain in "Searching for Devices". You can tap it directly the next time you use it.




6. Choose the product to start the WiFi® network configuration of the device, then select WiFi® and enter the password to connect.

**NOTE:** If it discovered the air fryer, please tap "Add Device" and set up WIFI.

**NOTE:**

- Without the cooking process, the air fryer will be automatically turned off after 3 minutes if there is no operation on the air fryer. Please press the power button  again to turn it on and follow the above step to reconnect.
- Make sure your router is turned on and connectable.
- The Wi-Fi password is entered correctly.
- Make sure your WiFi signal can cover the device.
- Only use 2.4G network connection.

 **ATTENTION!**  
If you're having trouble setting it up or pairing it, please follow the steps below to troubleshoot.

## APP FEATURES

### 1. Remote Control

- All smart air fryer functions can be controlled remotely, except for starting cooking (to comply with UL safety regulations).
- Cooking progress can be monitored from a distance.

### 2. In-App Recipes & Cooking videos

- 50+ cooking videos with recipes are available on the app. These recipes automatically set the recommended time and temperature.
- Create and save custom recipes.

### 3. Setting a schedule for cooking

- Choose the recipe you want, or customize.

### 4. Third-Party Voice Control

- Compatible with Amazon Alexa and Google Assistant™ for voice commands.

**NOTE:** The Crownful app is continually updated and the app features will expand.

# TROUBLESHOOTING

**Step1:**Reconnect , press and hold the on/off button for 3s to turn on WiFi , the WiFi indicator flashes slowly.  
**Step2:**Press and hold the select button for 5s until the WiFi indicator starts blinking.

**Can't find your device?** ✕

Make sure the WiFi indicator is blinking.

Make sure your phone's Bluetooth is turned on.

Keep your phone close to the device.

Bluetooth devices can only connect to one phone at a time. Make sure your device isn't connected to any other phones when trying to pair.


Try powering the device off and on again. You may need to make the device unplugged and then replug it. More often than not, this will fix the problem.

[Try Again](#)

Can't find your device

## SOLUTIONS:

1. Make sure the Wi-Fi indicator is blinking.
2. Make sure your phone's Bluetooth® is turned on.
3. Make sure your device isn't connected to any other phones when trying to pair. (Only one phone can be connected to the device at a time.)
4. Turn the air fryer off and on again by unplugging and plugging it back in.  
Click "Try Again" and follow steps above.



**Air Fryer**

This device had been set up previously and may have saved customizations.

Are you sure you want to reset your device?You will lose any saved settings.

[Reset My Device](#)

[Exit Setup](#)

Reset My Device

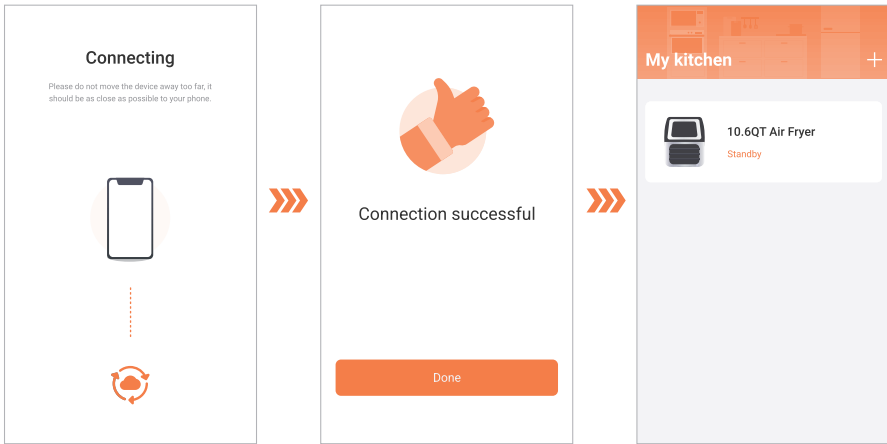
## WHY DOES IT SHOW THIS REMINDER?

1. You or Your family have used another Crownful account to connect this air fryer with Crownful App before.
2. Repeat connecting the same device on this app.

## SOLUTION:

Please click "Reset My Device" and then you can connect to other new devices. However, it will lose all your saving settings on this device. ( You can also use this method to reset your device upon demand)

If you don't want to reset your device, please click "Exit Set Up" and it will keep all your saved settings.



## TROUBLESHOOTING (Wi-Fi indicator turns red )


### SOLUTIONS:

1. Unplug the air fryer and wait for 30 seconds and then plug in again.
2. Follow the above instructions to connect again.

**NOTE:** If the Wi-Fi indicator is still in red light, there is a device malfunction. Please contact Crownful support team at [support@crowful.com](mailto:support@crowful.com)

### D: PAIRING WITH THE DEVICE

1. It takes time for the first time to pair with the Crownful App. Please wait for the connection. Once the connection is completed, the Wi-Fi indicator will keep on with a beep. Then, You can visit the air fryer operation interface after the connection is successful.

**NOTE:** If the device connects well, please do not press and hold the light button  again for 5 seconds to avoid re-entering the network configuration state of the device and resetting the device. It will lose all your saving settings on this device for the above situation.

2. Select the air fryer under "My Device" on the next usage and it will connect automatically.



### Bluetooth® Connection Failed

If the Bluetooth® connection failed, please keep your phone closer to the device and reconnect again.



### Wi-Fi® Connection Failed

If the device network configuration failed, please make sure the WiFi® password is correct, or try to switch WiFi to connect.




### Device Connection Failed

Press and hold the light button for 5 seconds until the Wi-Fi indicator blinks with a beep quickly and try to reconnect it again.

## DISCONNECTING FROM WIFI®


### METHOD 1

- To disconnect Wi-Fi®, press and hold the light button  for 5 seconds until the Wi-Fi indicator blinks. This will restore the smart air fryer's default settings and disconnect it from the Crownful app.
- To reconnect, please follow the above instructions for adding a device.

### METHOD 2

- Delete device from the Crownful app setting, the Wi-Fi indicator stays in slow flashing status.
- To reconnect, please follow the above instructions for adding a device.

In case of power failure or manual unplugging during use, please follow these operation steps:

1. Press and hold the rotating button  for 3 seconds to turn on WiFi® and the Wi-Fi indication blinks slowly with a beep.
2. If the network has been connected before a power failure, the device will automatically reconnect. During reconnecting, the Wi-Fi indicator blinks slowly and then changes to steady after completed connection.

**NOTE:** If the device is disconnected or offline, the Wi-Fi indicator stays in slow flashing status. To reconnect, please follow the above instructions for adding a device.

# CONTROL PANEL

---




1. LCD Display
2. Temperature Indicator
3. Working Indicator
4. Time Indicator
5. Temperature+
6. Temperature-
7. Mode Indicators: French Fry, roast, fish, shrimp, pizza, chicken, bake, rotisserie
8. Light Button / Long press 5 seconds as WiFi Setting Button
9. Power on/Pause Button (Long-press to turn off the machine)
10. Rotating Button / Long press 3 seconds as WiFi Turn on/ off Button
11. Time-
12. Time+
13. Wi-Fi Indicator

# USING YOUR AIR FRYER

---

Connect the appliance to a power source, it enters standby mode with a beep. All the indicators on the control panel will flash once.

**Note:** Without the cooking process, the air fryer will automatically enter standby mode with a beep after 3 minutes if there is no operation on the air fryer. Please press the power button  again to turn it on.

## Power On / Off

Tap the Power Button to turn on the appliance and it will beep. All the indicators on the control panel will light up.

Tap it again to turn off the appliance. When it is off, the fan will continue working for 20 seconds more until it stops.

## Light Control

When the appliance is on, press the Light Button to turn on / off the light.

## Preheat the Oven

Preheat the Air Fryer Oven for 1-3 minutes. It is necessary for the Air Fryer to reach the desired temperature.

## Choose the Cooking Mode

1. When the unit is on, tap the Mode Button to choose the cooking mode as desired. The corresponding mode indicator will light up. The LCD display will show the cooking temperature and cooking time alternatively with the latter counting down by the minute.
2. When the mode is selected, press the Power Button again to start the cooking process. The Working (Fan) Indicator will keep flashing, it means the blower starts running and cooking process has started.

**NOTE:** More flexible time & temperature setting can be adjusted.

- 1) To adjust time of cooking mode, press the + or - on the right side of the control panel to increase or decrease time in 1 minute increments, from 1 to 90 minutes. You also can long press the + or - on the right side of the control panel to increase or decrease time in 5 minute increments. (Only under Dehydration mode, press the + or - on the right side of the control panel to increase or decrease time in 30 minute increments, from 1 to 24 hours.)
- 2) To adjust temperature of cooking mode, press the + or - on the right side of the control panel to increase or decrease temperature in 5 degree increments, from 180°F to 400°F. You also can long press it to increase or decrease temperature quickly. (Only under Dehydration mode, press the + or - on the left side of the control panel to increase or decrease temperature in 5 degree increments, from 90°F to 180°F.)

- 3) During the cooking process, you can press the + or - on the right/ left side of the control panel to adjust Time/Temperature. But if you want to change to cooking mode, please press the power button to pause the cooking and then you can change the cooking mode.
- 4) When you open the oven's door during a cooking process, the oven will pause working. This is the best time to check or turn the food over. Close it again, the appliance will resume working under the previous remaining time and temperature.

**NOTE:** Tap the Rotating Button to start rotating if the rotisserie shaft or basket is used for more even result.

**DEFAULT COOKING TIME AND TEMPERATURE:**

COOKING MODE	TEMPERATURE	COOKING TIME
French Fries	400 °F	15 min
Roast	360 °F	25 min
Fish	340 °F	15 min
Shrimp	320 °F	12 min
Pizza	360 °F	15 min
Chicken	360 °F	30 min
Baking	320 °F	30 min
Rotisserie	370 °F	30 min
Dehydrate	150 °F	4 hours
Reheat	240 °F	6 min

**Set the Cooking Time**

Tap the Time + / - Buttons to increase/ decrease the cooking time with a difference of 1 minute on each tap, from 1 to 90 minutes. You also can long press the Time + / - Buttons to increase or decrease time in 5 minute increments. (Only under Dehydration mode, press the Time + / - Buttons to increase or decrease time in 30 minute increments, from 1 to 24 hours.)

**Set the Cooking Temperature**

Tap the Temperature + / - Buttons to increase or decrease temperature in 5 degree increments, from 180°F to 400°F. You also can long press it to increase or decrease temperature quickly. (Only under Dehydration mode, it is from 90°F to 180°F.)

## RECOMMENDED COOKING TIME AND TEMPERATURE:

FOOD	AMOUNT	TIME	TEMPERATURE	RECOMMENDATIONS
Thin Frozen Fries	1.5-3 cups	15 min	400 °F	
Thick Frozen Fries	1.5-3 cups	25 min	400°F	
Homemade Fries	1.5-3.5 cups	15 min	400 °F	Add 1/2 tbsp. oil
Homemade Potato Wedges	1.5-3.5 cups	12 min	360 °F	Add 1/2 tbsp. oil
Homemade Potato Cubes	1.5-3 cups	15 min	360 °F	Add 1/2 tbsp. oil
Hash Browns	1 cup	30 min	360 °F	
Potato Gratin	2 cups	30 min	400 °F	
Steak	1/4-1.1 lb	30 min	360 °F	
Pork Chops	1/4-1.1 lb	4 hours	360 °F	
Hamburger	1/4-1.1 lb	6 min	360 °F	
Sausage Roll	1/4-1.1 lb	13-15 mins	400 °F	
Chicken Drumsticks	1/4-1.1 lb	18-22mins	360 °F	
Chicken Breast	1/4-1.1 lb	10-15mins	360 °F	
Spring Rolls	1/4-3/4 lb	15-20mins	400 °F	Use oven-ready
Frozen Chicken Nuggets	1/4-1.1 lb	10-15 mins	400 °F	Use oven-ready
Frozen Fish Sticks	1/4-1.1 lb	6-10 mins	400 °F	Use oven-ready
Mozzarella Sticks	1/4-1.1 lb	8-10mins	360 °F	Use oven-ready
Stuffed Vegetables	1/4-1.1 lb	10 mins	320 °F	
Cake	1.25 cups	20-25 mins	320 °F	Use baking tin
Quiche	1.5 cups	20-22 mins	360 °F	Use baking tin/oven dish
Muffins	1.25 cups	15-18 mins	400 °F	Use baking tin
Sweet Snacks	1.5 cups	20 mins	320 °F	Use baking tin/oven dish
Frozen Onion Rings	1lb	15 mins	400 °F	

### Useful Tips:

1. Toast: Add your sliced bread to the air fryer Oven. Set the temperature to 40°F| 24C, and air fry for 4 minutes. If you have very thin sliced bread, your toast will probably be done in 3 minutes. You can adjust according to your preferred texture and taste.
2. Air fryers are popular for making healthy fried foods. People would assume that no oil is needed and so ended up with dry food. However you still need to add 1 teaspoon to 1 tablespoon of oil each time you use your air fryer to help bring that flavor and moisture to your food.

3. Turn your air fryer at 350-400 degrees F for just 3-4 minutes to reheat. Then your reheated leftovers will taste just as crispy as it was the night before. Just think-crispy, hot and fresh reheated pizza in an air fryer (or any other food you want!).
4. You can roast up to 3-pound whole chicken inside the oven using the roasting fork.
5. Initial start-up operation may produce a smell and smoke for about 15 minutes. It is due to the protective substance on heating elements that protect them while they are stored. Cook slices of lemon at 400F for 5-10 minutes to minimize the smell.



[smarthomeguide.crownful.com](https://smarthomeguide.crownful.com)

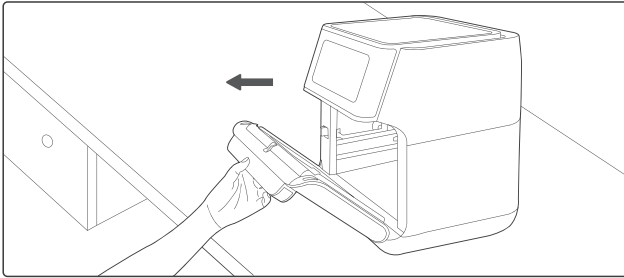
Scan the QR Code to watch smart device guide videos.



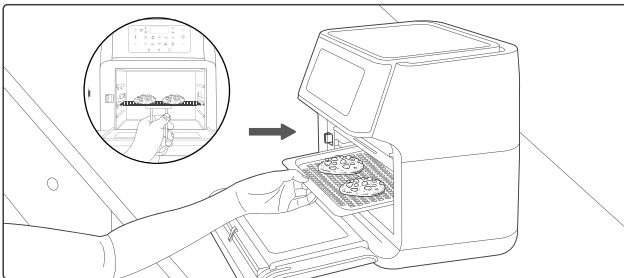
[airfryerovenrecipes.crownful.com](https://airfryerovenrecipes.crownful.com)

Want to learn how to make delicious food at home?  
Scan the QR code to watch instructions and cooking videos.

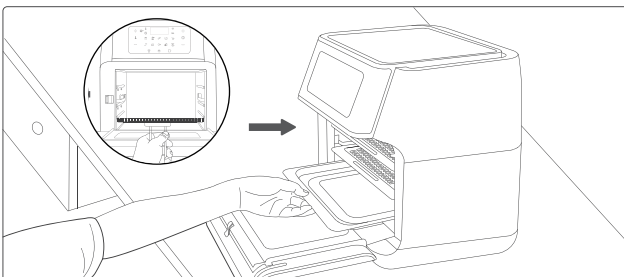
**Use the Accessories:** Please choose the proper accessories as per the ingredients to be cooked. Pull the Handle to open the window oil and residue for easier cleaning of the oven.



**Mesh Racks:** Slide the mesh racks into the upper two sliding chutes for dehydration or to cook crispy snacks/reheat items like pizza. Use this clip to remove food and prevent burns.

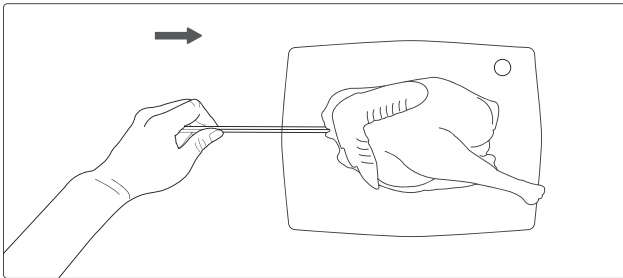


**Drip Tray:** Slide the drip tray into the lowest sliding chute to collect the dripping oil and residue for easier cleaning of the oven. Use this clip to remove food and prevent burns.

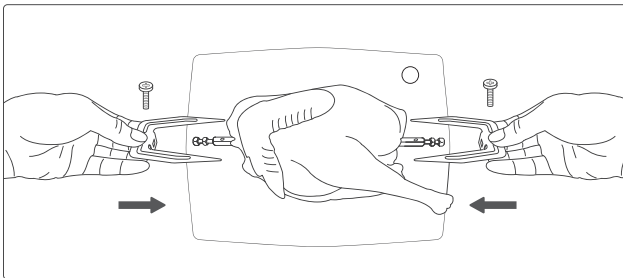


**Rotisserie Shaft:** It is used to roast whole chicken and relatively large pieces of meat

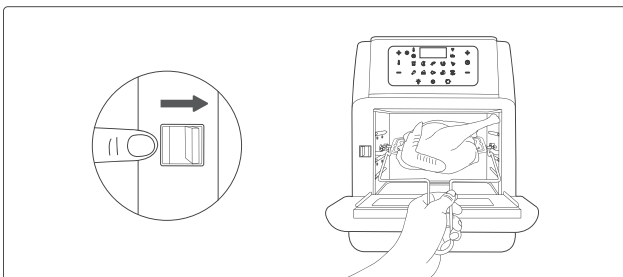
1. Pass the shaft through the length of the whole chicken.



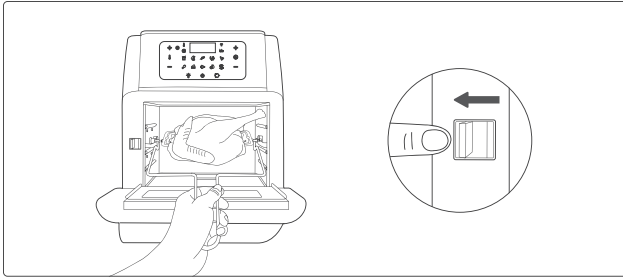
2. Mount the meat forks onto the shaft and insert it into the meat. Fix the forks with the screws.



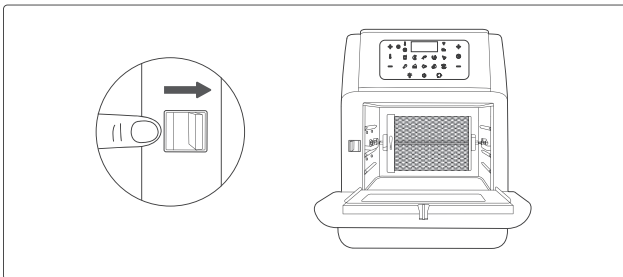
3. Toggle the Switch to the right, Place the rotisserie shaft onto the rails push it into the Lock position.



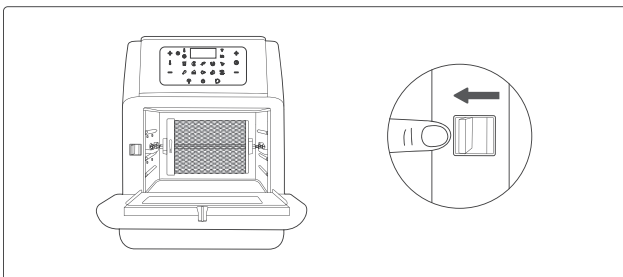
4. Release the Switch and lock the shaft into place.



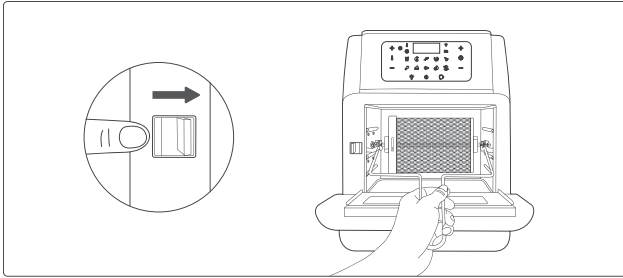
**Rotisserie Basket:** 1. Toggle the Switch to the right. Place the rotisserie shaft onto the rails push it into the Lock position.



2. Release the Switch and lock the basket into place.



3. Use the removal tool to remove the basket to avoid scalding.



**WARNING:**

Accessories are relatively sharp due to functional requirements. Please pay special attention during use, and take appropriate protection when necessary. When cooking is done, the temperature of the accessories is very high. Do not touch directly to prevent scalding. Please keep the accessories properly to prevent children from coming into contact with them. power on again.

**NOTE:**

You can use the removal tool to remove rotisserie basket and rotisserie shaft to avoid burns.

## CLEANING AND MAINTENANCE

---

### CLEANING

Clean the air fryer oven after each use. Unplug the power cord from the wall socket and be certain the appliance is thoroughly cooled before cleaning

1. The accessories are dishwasher safe but never use abrasive cleaning materials or utensils on their surfaces to avoid scratches.
2. Soak the caked-on food in warm, soapy water for easy removal
3. Wipe the outside of the appliance with a warm cloth dampened with mild detergent.
4. Clean the inside of the appliance with a warm nonabrasive sponge dampened with mild detergent. If necessary remove unwanted food residue from the control panel with a cleaning brush.

### STORAGE

1. Unplug the appliance and let it cool thoroughly
2. Make sure all components are clean and dry.
3. Place the appliance in the clean, dry place.

# TROUBLESHOOTING

PROBLEM	POSSIBLE CAUSE	SOLUTION
The oven does not work.	The appliance is not plugged in.	Plug power cord into wall socket.
	You have not turned on the Unit by setting the cooking time and temperature.	Set the temperature and time as instructed.
	The product window is not closed properly.	Check that window is closed.
The ingredients fried with the air fryer oven are not done.	Too much amount of food	Reduce the amount of food for single cooking.
	Setting temperature too low.	Set the temperature higher.
The ingredients are fried unevenly.	When tray is used to make food, the tray position is not adjusted.	During cooking, adjust the tray position appropriately.
White smoke comes out of the appliance.	You are preparing greasy ingredients.	When you fry greasy ingredients in the air fryer, a large amount of oil will leak into the pan. The oil produces white smoke and the pan may heat up more than usual. This does not affect the appliance or the end result.
	The pan still contains grease residues from previous use.	White smoke is caused by grease heating up in the pan. Make sure you clean the pan properly after each use.
Fresh fries are not crispy.	The crispiness of the fries depends on the amount of oil and water in the fries.	Make sure you dry the potato sticks properly before you add the oil, Cut the potato sticks smaller for a crispier result. Add slightly more oil for a crispier result.

**NOTE:** 1 or E2: Malfunction or short circuit on the internal wire, please take a picture and contact us.

# FCC STATEMENT

---

This device complies with Part 15 of the FCC Rules. Operation is subject to the following two conditions:

- (1) This device may not cause harmful interference.
- (2) This device must accept any interference received, including interference that may cause undesired operation.

**NOTE:** This equipment has been tested and found to comply with the limits for a Class B digital device, pursuant to Part 15 of the FCC Rules. These limits are designed to provide reasonable protection against harmful interference in a residential installation. This equipment generates, uses and can radiate radio frequency energy and, if not installed and used in accordance with the instructions, may cause harmful interference to radio communications. However, there is no guarantee that interference will not occur in a particular installation. If this equipment does cause harmful interference to radio or television reception, which can be determined by turning the equipment off and on, the user is encouraged to try to correct the interference by one or more of the following measures:

- Reorient or relocate the receiving antenna.
- Increase the separation between the equipment and receiver.
- Connect the equipment into an outlet on a circuit different from that to which the receiver is connected.
- Consult the dealer or an experienced radio/TV technician for help.

## FCC RADIATION EXPOSURE STATEMENT

This equipment complies with FCC radiation exposure limits set forth for an uncontrolled environment. End users must follow the specific operating instructions for satisfying RF exposure compliance. To maintain compliance with FCC RF exposure compliance requirements, please follow operation instructions as documented in this manual. This transmitter must not be co-located or operating in conjunction with any other antenna or transmitter. This equipment should be installed and operated with a minimum distance of 20cm between the radiator and your body. The availability of some specific channels and/or operational frequency bands are country dependent and are firmware programmed at the factory to match the intended destination. The firmware setting is not accessible by the end user.

## WARRANTY INFORMATION

---

We grant 1 year warranty on the product commencing on the date of purchase. Within the guarantee period, we will eliminate any defects in the appliance resulting from faults in materials or workmanship. Please contact us at: [support@crowful.com](mailto:support@crowful.com) to launch a warranty claim.

This guarantee does not cover: damage due to improper use, normal wear or use as well as defects that have a negligible effect on the value or operation of the appliance. The guarantee becomes void if repairs are undertaken by unauthorized persons and if original product parts are not used.

## CUSTOMER SERVICE

---

1. If you have any product questions or concerns, please don't hesitate to contact us directly at [support@crowful.com](mailto:support@crowful.com) or visit our website at: [www.crowful.com](http://www.crowful.com).
2. We have a hassle-free warranty and customer service team for satisfactory solutions to any issue you might have.







*Thanks for trusting CROWNFUL  
for your household and kitchen needs!*



(May you have a FANTASTIC culinary experience with your new CROWNFUL air fryer oven!)



**START COOKING** delectable yet healthier meals  
using your free CROWNFUL air fryer oven recipe book



**SUBSCRIBE** to our newsletter to get yourself  
updated with latest great deals, gifts and valuable  
information about CROWNFUL products.  
<https://www.facebook.com/crownful.official>



**GOT QUESTIONS or CONCERNS?**  
Please contact [support@crownful.com](mailto:support@crownful.com)

---

**12**  
**Months**

**WARRANTY ISSUE**

Email: [support@crownful.com](mailto:support@crownful.com)

And we'll do our best to make you one of our HAPPY customers!  
We remain at your service! Of CROWNFUL  
<https://www.crownful.com/>



Scan to Follow Us



@crownful.official  
Website: [www.crownful.com](http://www.crownful.com)